

# CUSRES Customs Response Message

## Introduction:

This Customs Response Message (CUSRES) permits the transfer of data from a customs administration:

- to acknowledge the receipt of the message - to indicate whether the information received is correct or if there are errors (i.e. accepted without errors, accepted with errors, rejected, etc.) - to inform the sender of the status of the customs declaration (i.e. goods released, goods for examination, documents required, etc.)
- to transmit additional information as agreed between parties (i.e. tax information, quantity information, etc.)
- to respond to batched messages (i.e. CUSDEC, CUSCAR, CUSREP, CUSEXP).

Note: this message is not meant to replace the functionality of the CONTRL message.

## Notes:

This Message Implementation Guideline (MIG) has been developed by JUL Project Team, in the context of the JUL Portuguese Project ([www.projeto-jul.pt](http://www.projeto-jul.pt)).

In this context, the following items are considered. The document provides the definition of the message for Customs notifications on decisions taken (release, control instructions) over transport equipment or general cargo in ports or other facilities, to be used in electronic data interchange with port authorities, port terminals, cargo operators or their representatives, related with cargo movements in Portuguese ports.

Additionally to the UN/EDIFACT definition and scope, this MIG is used also applied to general cargo.

The message can be used in alternative two forms.

The preferred form is to use SG6 (DOC) to provide information on the goods over which the decision expressed in segment GEI at header level is expressed. As the decision is associated to a document, the decision is applied to the goods listed in the other segments of SG6 that are associated to the document identified in segment DOC. This approach can be used for transport equipment and general cargo shipments.

The other alternative is to refer the document related with the decision in SG3 (RFF), having the decision expressed in segment GEI, and list the goods by using several occurrences of EQD. Although simpler this approach is only applicable to transport equipment.

Due to the existence of current implementations of this message in some Portuguese ports, the document signals where backward compatibility is relevant. However, new or updated implementations must follow this MIG and shall ignore these specific exceptions.

This MIG provides guidance as to the recommended usage of codes, qualifiers, data elements, composites, segments and groups of segments in the D.16A CUSRES. The intention is to assist developers to ensure consistent use of the CUSRES message throughout the worldwide trade and transport community.

The MIG was elaborated considering the following references:

- UN/EDIFACT D.16A CUSRES
- UN/EDIFACT D.16A Data Element Codes

- ISO 6346, 2nd and 3rd editions, and amendments – Freight containers – Coding, identification and marking
- UN/ECE Recommendation 7 – Numerical Representation of Dates, Time, and Periods of Time
- UN/ECE Recommendation 16 (3rd edition) – UN/LOCODE – Codes for Ports and Other Locations
- UN/ECE Recommendation 19 (2nd edition) – Codes for Modes of Transport
- UN/ECE Recommendation 20 – Codes for Units of Measure Used in International Trade
- ITIGG: General Recommendations Version 2.1 March 2001

Usage indicators in this MIG follow ITIGG Recommendation D4/G44.

Status Indicators (“M” and “C”) form part of the UN/EDIFACT standard and indicate a minimum requirement to fulfil the needs of the message structure. They are not adequate for implementation purposes. The Status Indicators are:

#### Value Description

##### M Mandatory

The entity marked as such must appear in all messages, and apply to these messages as well as to any associated implementation guidelines (and consequently is also a Usage Indicator).

##### C Conditional

The entity is used by agreement between trading partners.

Usage Indicators are implementation related indicators that further detail the use of “Conditional” Status Indicators. Usage Indicators are applied at all levels of the guidelines and shown adjacent to data items such as segment groups, segments, composite data elements and simple data elements. They dictate the agreed usage of the data items or entities. The Usage Indicators are:

#### Value Description

##### M Mandatory

Indicates the item is mandatory in the UN/EDIFACT message.

##### R Required

Indicates the item must be transmitted in this implementation.

##### D Dependent

Indicates that the use of the item is depending on a well-defined condition or set of conditions. These conditions must be clearly specified in the relevant implementation guideline.

##### O Optional

Indicates that this item is at the need or discretion of both trading partners.

##### X Not Used

Indicates that this item is not to be used in this implementation.

Where an item within a segment group, segment or composite data element is marked with Usage Indicators “M” or “R”, but the segment group, segment or composite data element has been marked “O” or “D” (or for that matter “X”), the item is only to be transmitted when the segment group, segment or composite of which it is a part, is used.

Examples in the text are just related with the segments where they appear. They are not necessarily related between each other.

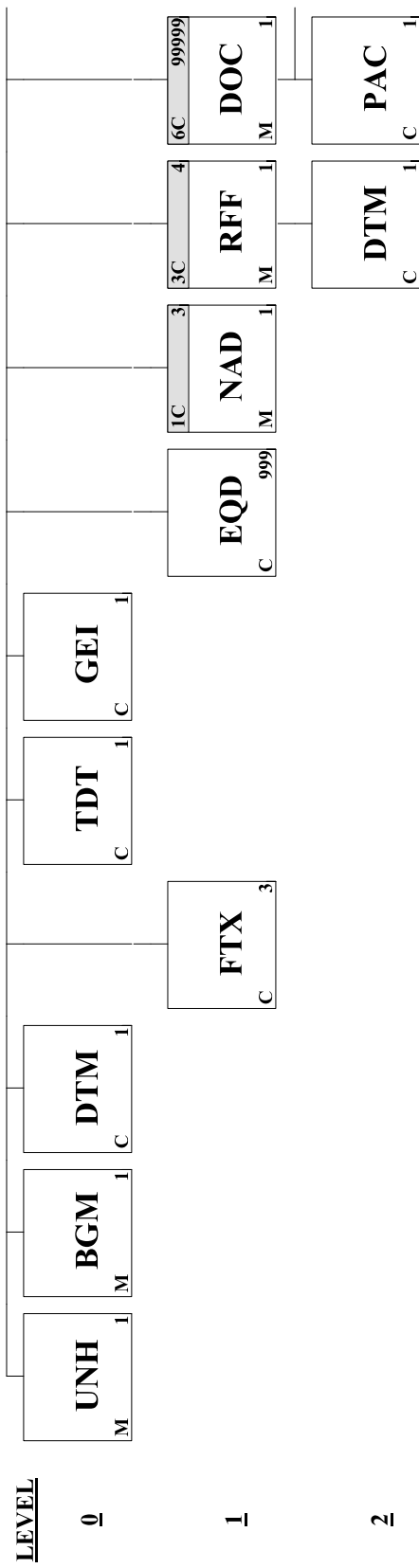
### \*\*\* Special Note On Local Usage

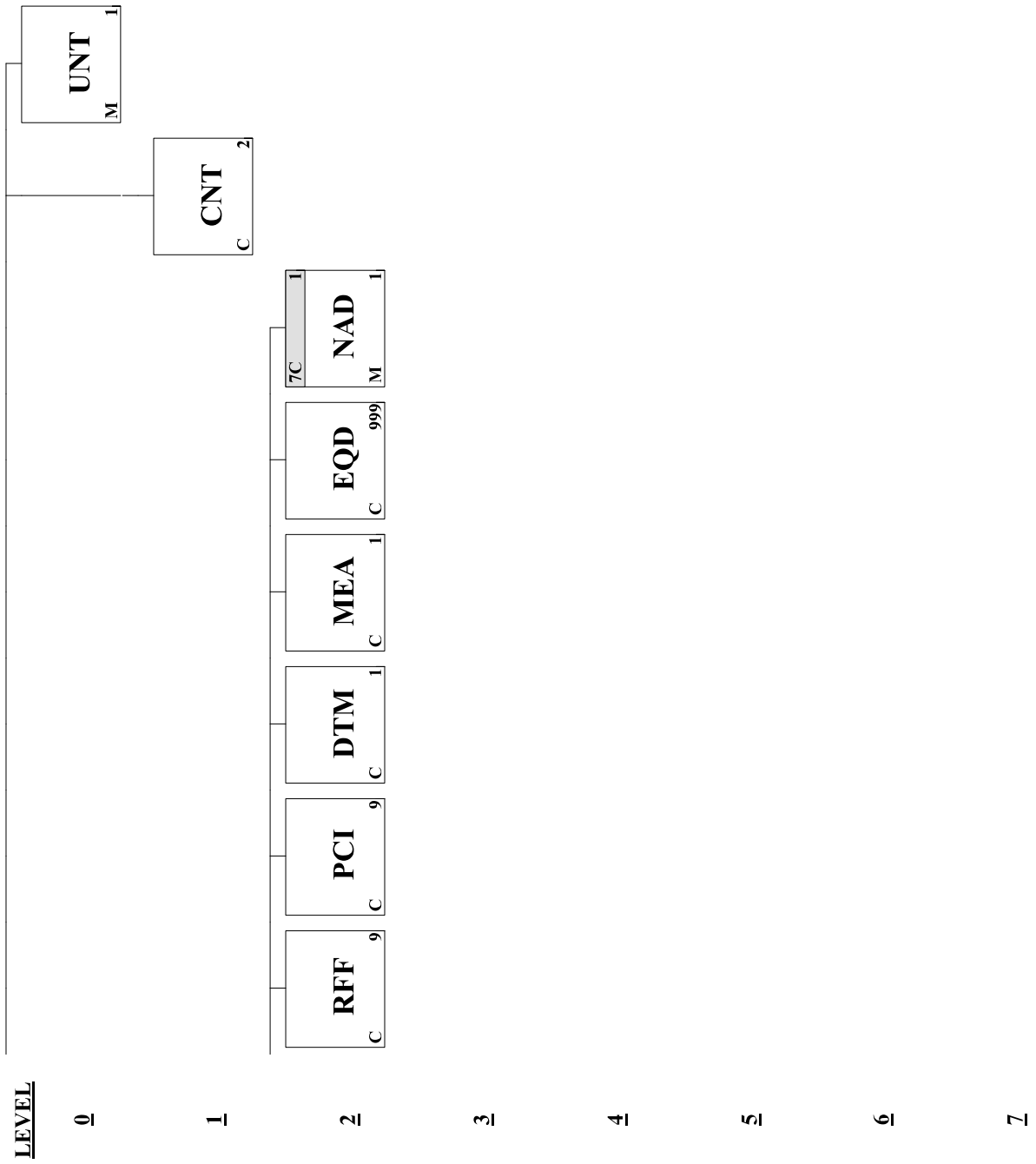
Due to the diverse realities of the Portuguese ports and the stakeholders operating in them, it is necessary to define local rules, codes, etc. But this needs to be done considering the harmonization framework that this document defines.

In order to avoid a heavy guideline where all local port specifics are expressed, the approach is to redirect the reader to an external document when applicable. The external document should be elaborated by the each port when justified.

However all stakeholders should have the following in mind. The local specifications are complementary to this document, they are used to document current implementations, and should not be a justification for new or updated implementations avoid the full adoption of this document.

<u>Page No.</u>	<u>Pos. No.</u>	<u>Seg. ID</u>	<u>Name</u>	<u>Base Guide</u>	<u>User Status</u>	<u>Max.Use</u>	<u>Group Repeat</u>	<u>Notes and Comments</u>
6	00010	UNH	Message Header	M	M	1		
8	00020	BGM	Beginning of Message	M	M	1		
10	00030	DTM	Date/Time/Period	C	O	1		
11	00040	FTX	Free Text	C	O	3		
13	00050	TDT	Transport Information	C	O	1		
16	00070	GEI	Processing Information	C	R	1		
18	00080	EQD	Equipment Details	C	O	999		
	00090		Segment Group 1: NAD	C	O		3	
21	00100	NAD	Name and Address	M	M	1		
	00140		Segment Group 3: RFF-DTM	C	O		4	
25	00150	RFF	Reference	M	M	1		
26	00160	DTM	Date/Time/Period	C	O	1		
	00270		Segment Group 6: DOC-PAC-RFF-PCI-DTM-MEA-EQD-SG7	C	O		99999	
31	00280	DOC	Document/Message Details	M	M	1		
33	00290	PAC	Package	C	D	1		
35	00300	RFF	Reference	C	O	9		
37	00310	PCI	Package Identification	C	D	9		
39	00350	DTM	Date/Time/Period	C	O	1		
40	00370	MEA	Measurements	C	D	1		
42	00380	EQD	Equipment Details	C	D	999		
	00390		Segment Group 7: NAD	C	O		1	
45	00400	NAD	Name and Address	M	M	1		
48	00670	CNT	Control Total	C	R	2		
49	00710	UNT	Message Trailer	M	M	1		





**Segment:** **UNH** Message Header  
**Position:** 00010  
**Group:**  
**Level:** 0  
**Usage:** Mandatory  
**Max Use:** 1  
**Purpose:** A service segment starting and uniquely identifying a message. The message type code for the Customs response message is CUSRES.  
 Note: Customs response messages conforming to this document must contain the following data in segment UNH, composite S009:  
 Data element 0065 CUSRES 0052 D 0054 16A 0051  
 UN

**Dependency Notes:****Semantic Notes:****Comments:**

**Notes:** Example: Message envelope number "1357924680", type "CUSRES", UN/Edifact directory "D16A"

UNH+1357924680+CUSRES:D:16A:UN'

**Data Element Summary**

<u>Data Element</u>	<u>Component Element</u>	<u>Name</u>	<u>Base Attributes</u>		<u>User Attributes</u>
0062		<b>MESSAGE REFERENCE NUMBER</b>	M	1 an..14	M
		Unique message reference assigned by the sender.			
S009		<b>MESSAGE IDENTIFIER</b>	M	1	M
		Identification of the type, version etc. of the message being interchanged.			
	0065	<b>Message type identifier</b>	M	an..6	M
		Code identifying a type of message and assigned by its controlling agency. CUSRES Customs response message			
	0052	<b>Message type version number</b>	M	an..3	M
		Version number of a message type. D Draft version/UN/EDIFACT Directory			
	0054	<b>Message type release number</b>	M	an..3	M
		Release number within the current message type version number (0052). 16A Release 2016 - A			
	0051	<b>Controlling agency</b>	M	an..2	M
		Code identifying the agency controlling the specification, maintenance and publication of the message type. UN UN/CEFACT			
	0057	<b>Association assigned code</b>	C	an..6	O
		Code, assigned by the association responsible for the design and maintenance of the message type concerned, which further identifies the message. Usage complemented in local document if mentioned in that document.			

<b>0068</b>	<b>COMMON ACCESS REFERENCE</b>	<b>C</b>	<b>1</b>	<b>an..35</b>	<b>X</b>
<b>S010</b>	<b>STATUS OF THE TRANSFER</b>	<b>C</b>	<b>1</b>		<b>X</b>
	Statement that the message is one in a sequence of transfers relating to the same topic.				
<b>0070</b>	<b>Sequence message transfer number</b>	<b>M</b>		<b>n..2</b>	<b>X</b>
	Number assigned by the sender indicating that the message is an addition or change of a previously sent message relating to the same topic.				
<b>0073</b>	<b>First/last sequence message transfer indication</b>	<b>C</b>		<b>a1</b>	<b>X</b>
	Indication used for the first and last message in a sequence of the same type of message relating to the same topic.				

**Segment:** **BGM** Beginning of Message  
**Position:** 00020  
**Group:**  
**Level:** 0  
**Usage:** Mandatory  
**Max Use:** 1  
**Purpose:** A segment identifying the type and the reference number of the message to which the CUSRES is a response.

**Dependency Notes:****Semantic Notes:****Comments:**

**Notes:** Data element 1225 shall be used according to the following rules:

Example: Customs clearance message CCL75440947, original.

BGM+132+CCL75440947+9'

**Data Element Summary**

<u>Data Element</u>	<u>Component Element</u>	<u>Name</u>	<u>Base Attributes</u>		<u>User Attributes</u>
C002		<b>DOCUMENT/MESSAGE NAME</b>	C	1	R
		Identification of a type of document/message by code or name. Code preferred.			
	1001	<b>Document name code</b>	C	an..3	R
		Code specifying the document name.			
		The qualifiers will be understood has having the same meaning.			
		132 Customs clearance notice			
		962 Document response (Customs)			
	1131	<b>Code list identification code</b>	C	an..17	X
	3055	<b>Code list responsible agency code</b>	C	an..3	X
	1000	<b>Document name</b>	C	an..35	X
C106		<b>DOCUMENT/MESSAGE IDENTIFICATION</b>	C	1	R
		Identification of a document/message by its number and eventually its version or revision.			
	1004	<b>Document identifier</b>	C	an..70	O
		To identify a document.			
	1056	<b>Version identifier</b>	C	an..9	X
	1060	<b>Revision identifier</b>	C	an..6	X
1225		<b>MESSAGE FUNCTION CODE</b>	C	1 an..3	R
		Code indicating the function of the message.			
		1 Cancellation			
		2 Addition			
		3 Deletion			
	4 Change				



	5	Replace			
	9	Original			
<b>4343</b>	<b>RESPONSE TYPE CODE</b>		<b>C</b>	<b>1 an..3</b>	<b>O</b>
	Code specifying the type of acknowledgment required or transmitted. Refer to D.16A Data Element Dictionary for acceptable code values.				
<b>1373</b>	<b>DOCUMENT STATUS CODE</b>		<b>C</b>	<b>1 an..3</b>	<b>X</b>
<b>3453</b>	<b>LANGUAGE NAME CODE</b>		<b>C</b>	<b>1 an..3</b>	<b>X</b>

**Segment:** **DTM** Date/Time/Period  
**Position:** 00030  
**Group:**  
**Level:** 0  
**Usage:** Conditional (Optional)  
**Max Use:** 1  
**Purpose:** A segment identifying the relevant dates and times in the message. For example, payment date.

**Dependency Notes:****Semantic Notes:****Comments:**

**Notes:** Usage complemented in local document if mentioned in that document.

The usage of this segment is to provide the date/time at which the sender creates the message. In this case DE:2005 will be '137'.

Example: Message issued on 2002/02/01 at 14:21

DTM+137:200202011421:203'

**Data Element Summary**

<u>Data Element</u>	<u>Component Element</u>	<u>Name</u>	<u>Base Attributes</u>		<u>User Attributes</u>
C507		DATE/TIME/PERIOD	M	1	M
		Date and/or time, or period relevant to the specified date/time/period type.			
	2005	<b>Date or time or period function code qualifier</b>	M	an..3	M
		Code qualifying the function of a date, time or period.			
		137 Document issue date time			
	2380	<b>Date or time or period text</b>	C	an..35	R
		The value of a date, a date and time, a time or of a period in a specified representation.			
	2379	<b>Date or time or period format code</b>	C	an..3	R
		Code specifying the representation of a date, time or period.			
		203 CCYYMMDDHHMM			

**Segment:** **FTX** Free Text  
**Position:** 00040  
**Group:**  
**Level:** 1  
**Usage:** Conditional (Optional)  
**Max Use:** 3  
**Purpose:** A segment stating information in unsolicited clear text.  
**Dependency Notes:**  
**Semantic Notes:**  
**Comments:**

**Notes:** Usage complemented in local document if mentioned in that document.

Only for backward compability this segment is Optional for the two following purposes.

The first purpose is to contain information regarding the main transport. The reason to be used is due to the fact of the non existence of a segment RFF associated with the segment TDT. The first 4440 data element will have the process/folder/vessel call number of the Port Authority information system. The second 4440 data element will carry Customs identification to the same process/folder/vessel call, known as "Contramarca". In this case DE:4451 will have 'TDT'.

The second purpose is to Customs inform on the decision related with the goods linked to the document in the SG3 (RFF). In this case DE:4451 will have 'OSI'.

Example: Vessel call PTLEI12018000123, having customs process id 119/2018

FTX+TDT+++PTLEI12018000123:119/2018'

Example: Customs decision on good was to release goods for inland transport

FTX+OSI+++RELEASE BY INLAND'

#### Data Element Summary

<u>Data Element</u>	<u>Component Element</u>	<u>Name</u>	<u>Base Attributes</u>			<u>User Attributes</u>
4451		<b>TEXT SUBJECT CODE QUALIFIER</b>	M	1	an..3	M
		Code qualifying the subject of the text.				
		AAI General information				
		OSI Other service information				
		TDT Consignment transport				
4453		<b>FREE TEXT FUNCTION CODE</b>	C	1	an..3	X
C107		<b>TEXT REFERENCE</b>	C	1		X
		Coded reference to a standard text and its source.				
	4441	<b>Free text description code</b>	M		an..17	X
		Code specifying free form text.				

	<b>1131</b>	<b>Code list identification code</b>	<b>C</b>	<b>an..17</b>	<b>X</b>
		Code identifying a user or association maintained code list.			
	<b>3055</b>	<b>Code list responsible agency code</b>	<b>C</b>	<b>an..3</b>	<b>X</b>
		Code specifying the agency responsible for a code list.			
<b>C108</b>		<b>TEXT LITERAL</b>	<b>C</b>	<b>1</b>	<b>R</b>
		Free text; one to five lines.			
	<b>4440</b>	<b>Free text</b>	<b>M</b>	<b>an..512</b>	<b>M</b>
		Free form text.			
	<b>4440</b>	<b>Free text</b>	<b>C</b>	<b>an..512</b>	<b>O</b>
		Free form text.			
	<b>4440</b>	<b>Free text</b>	<b>C</b>	<b>an..512</b>	<b>X</b>
	<b>4440</b>	<b>Free text</b>	<b>C</b>	<b>an..512</b>	<b>X</b>
	<b>4440</b>	<b>Free text</b>	<b>C</b>	<b>an..512</b>	<b>X</b>
<b>3453</b>		<b>LANGUAGE NAME CODE</b>	<b>C</b>	<b>1 an..3</b>	<b>X</b>
<b>4447</b>		<b>FREE TEXT FORMAT CODE</b>	<b>C</b>	<b>1 an..3</b>	<b>X</b>

**Segment:** **TDT** Transport Information  
**Position:** 00050  
**Group:**  
**Level:** 0  
**Usage:** Conditional (Optional)  
**Max Use:** 1  
**Purpose:** A segment to specify any means of transport that is related to all information at the lower level of the message.

**Dependency Notes:****Semantic Notes:****Comments:**

**Notes:** Usage complemented in local document if mentioned in that document.

The purpose of the segment in this context is to help the receiver to identify the vessel related to the goods over which Customs decision notification is being made. Applicable only on maritime transport.

Example: Vessel name is PORTLINK CARAVEL

TDT+20++1+++++:::PORTLINK CARAVEL'

**Data Element Summary**

<u>Data Element</u>	<u>Component Element</u>	<u>Name</u>	<u>Base Attributes</u>			<u>User Attributes</u>
8051		<b>TRANSPORT STAGE CODE QUALIFIER</b> Code qualifying a specific stage of transport. 20 Main-carriage transport	M	1	an..3	M
8028		<b>MEANS OF TRANSPORT JOURNEY IDENTIFIER</b>	C	1	an..17	X
C220		<b>MODE OF TRANSPORT</b> Method of transport code or name. Code preferred.	C	1		R
	8067	<b>Transport mode name code</b> Code specifying the name of a mode of transport. UN Recommendation 19 - Codes for Modes of Transport.	C		an..3	R
		1 Maritime				
		2 Rail				
		3 Road				
		8 Inland water				
	8066	<b>Transport mode name</b>	C		an..17	X
C001		<b>TRANSPORT MEANS</b> Code and/or name identifying the type of means of transport.	C	1		X
	8179	<b>Transport means description code</b> Code specifying the means of transport.	C		an..8	X
	1131	<b>Code list identification code</b>	C		an..17	X

		Code identifying a user or association maintained code list.				
	<b>3055</b>	<b>Code list responsible agency code</b>	<b>C</b>	<b>an..3</b>	<b>X</b>	
		Code specifying the agency responsible for a code list.				
	<b>8178</b>	<b>Transport means description</b>	<b>C</b>	<b>an..17</b>	<b>X</b>	
		Free form description of the means of transport.				
<b>C040</b>		<b>CARRIER</b>	<b>C</b>	<b>1</b>	<b>X</b>	
		Identification of a carrier by code and/or by name. Code preferred.				
	<b>3127</b>	<b>Carrier identifier</b>	<b>C</b>	<b>an..17</b>	<b>X</b>	
		To identify a carrier.				
	<b>1131</b>	<b>Code list identification code</b>	<b>C</b>	<b>an..17</b>	<b>X</b>	
		Code identifying a user or association maintained code list.				
	<b>3055</b>	<b>Code list responsible agency code</b>	<b>C</b>	<b>an..3</b>	<b>X</b>	
		Code specifying the agency responsible for a code list.				
	<b>3126</b>	<b>Carrier name</b>	<b>C</b>	<b>an..35</b>	<b>X</b>	
		Name of a carrier.				
<b>8101</b>		<b>TRANSIT DIRECTION INDICATOR CODE</b>	<b>C</b>	<b>1 an..3</b>	<b>X</b>	
<b>C401</b>		<b>EXCESS TRANSPORTATION INFORMATION</b>	<b>C</b>	<b>1</b>	<b>X</b>	
		To provide details of reason for, and responsibility for, use of transportation other than normally utilized.				
	<b>8457</b>	<b>Excess transportation reason code</b>	<b>M</b>	<b>an..3</b>	<b>X</b>	
		Code specifying the reason for excess transportation.				
	<b>8459</b>	<b>Excess transportation responsibility code</b>	<b>M</b>	<b>an..3</b>	<b>X</b>	
		Code specifying the responsibility for excess transportation.				
	<b>7130</b>	<b>Customer shipment authorisation identifier</b>	<b>C</b>	<b>an..17</b>	<b>X</b>	
		To identify the authorisation to ship issued by the customer.				
<b>C222</b>		<b>TRANSPORT IDENTIFICATION</b>	<b>C</b>	<b>1</b>	<b>R</b>	
		Code and/or name identifying the means of transport.				
	<b>8213</b>	<b>Transport means identification name identifier</b>	<b>C</b>	<b>an..35</b>	<b>X</b>	
	<b>1131</b>	<b>Code list identification code</b>	<b>C</b>	<b>an..17</b>	<b>X</b>	
	<b>3055</b>	<b>Code list responsible agency code</b>	<b>C</b>	<b>an..3</b>	<b>X</b>	
	<b>8212</b>	<b>Transport means identification name</b>	<b>C</b>	<b>an..70</b>	<b>R</b>	
		Name identifying a means of transport.				
	<b>8453</b>	<b>Transport means nationality code</b>	<b>C</b>	<b>an..3</b>	<b>X</b>	
<b>8281</b>		<b>TRANSPORT MEANS OWNERSHIP INDICATOR CODE</b>	<b>C</b>	<b>1 an..3</b>	<b>X</b>	
<b>C003</b>		<b>POWER TYPE</b>	<b>C</b>	<b>1</b>	<b>X</b>	
		To specify the type of power.				
	<b>7041</b>	<b>Power type code</b>	<b>C</b>	<b>an..3</b>	<b>X</b>	
		Code indicating the type of power.				
	<b>1131</b>	<b>Code list identification code</b>	<b>C</b>	<b>an..17</b>	<b>X</b>	

	Code identifying a user or association maintained code list.			
<b>3055</b>	<b>Code list responsible agency code</b>	<b>C</b>	<b>an..3</b>	<b>X</b>
	Code specifying the agency responsible for a code list.			
<b>7040</b>	<b>Power type description</b>	<b>C</b>	<b>an..17</b>	<b>X</b>
	Description of the type of power.			

**Segment:** **GEI Processing Information**  
**Position:** 00070  
**Group:**  
**Level:** 0  
**Usage:** Conditional (Required)  
**Max Use:** 1  
**Purpose:** A segment identifying the various customs processing indicators. For example, cargo released, cargo held, examination required, earlier message accepted or rejected, etc.

**Dependency Notes:****Semantic Notes:****Comments:**

**Notes:** Usage complemented in local document if mentioned in that document.

This segment provides information of Customs taken decision related with the goods identified in the message.

Example: Goods are authorized to leave the port by inland carriage

GEI+1+4'

**Data Element Summary**

<u>Data Element</u>	<u>Component Element</u>	<u>Name</u>	<u>Base Attributes</u>			<u>User Attributes</u>
9649		<b>PROCESSING INFORMATION CODE QUALIFIER</b> Code qualifying the processing information. 1 Entity asset reporting	M	1	an..3	M
C012		<b>PROCESSING INDICATOR</b> Identification of the processing indicator.	C	1		R
	7365	<b>Processing indicator description code</b> Code specifying a processing indicator. Usage complemented in local document if mentioned in that document.	C		an..3	R
		4 Goods released				
		5 Goods required for examination				
		7 Goods detained				
		11 Pre-entry information				
		27 Onward carriage: immediate export				
		Z01 Goods required for indoor examination				
	1131	<b>Code list identification code</b> Code identifying a user or association maintained code list. Usage complemented in local document if mentioned in that document.	C		an..17	O
		120 Customs status of goods				
	3055	<b>Code list responsible agency code</b>	C		an..3	O



Code specifying the agency responsible for a code list.

Usage complemented in local document if mentioned in that document.

*ZZZ* Mutually defined

**7364 Processing indicator description C an..35 O**

Free form description of a processing indicator.

Usage complemented in local document if mentioned in that document.

Only for backward compability.

Textual description of the decision type being notified.

**7187 PROCESS TYPE DESCRIPTION CODE C 1 an..17 X**

**Segment:** **EQD** Equipment Details  
**Position:** 00080  
**Group:**  
**Level:** 1  
**Usage:** Conditional (Optional)  
**Max Use:** 999  
**Purpose:** A segment identifying equipment initials and numbers required to identify a shipment, covering the whole message, e.g. to indicate the container number that Customs wants to examine.

**Dependency Notes:****Semantic Notes:****Comments:**

**Notes:** Usage complemented in local document if mentioned in that document.

Used when the alternative form of the message is used. Identifies the transport equipment to which Customs decisiona is applied.

Example: Container GLDU7672570

EQD+CN+GLDU7672570'

**Data Element Summary**

<u>Data Element</u>	<u>Component Element</u>	<u>Name</u>	<u>Base Attributes</u>			<u>User Attributes</u>
8053		EQUIPMENT TYPE CODE QUALIFIER	M	1	an..3	M
		Code qualifying a type of equipment.				
		BPP				Truck and trailer combination being transported It will be treated like 'TE'.
		CH				Chassis It will be treated like 'TE'.
		CN				Container
		PA				Pallet
		PL				Platform
		SW				Swap body It will be treated like 'CN'.
		TE				Trailer
C237		EQUIPMENT IDENTIFICATION	C	1		R
		Marks (letters/numbers) identifying equipment.				
	8260	Equipment identifier	C		an..17	R
		To identify equipment.				
	1131	Code list identification code	C		an..17	X
	3055	Code list responsible agency code	C		an..3	X
	3207	Country identifier	C		an..3	X

<b>C224</b>	<b>EQUIPMENT SIZE AND TYPE</b>	<b>C</b>	<b>1</b>	<b>O</b>
	Code and or name identifying size and type of equipment. Code preferred.			
<b>8155</b>	<b>Equipment size and type description code</b>	<b>C</b>	<b>an..10</b>	<b>O</b>
	Code specifying the size and type of equipment.			
	In case of ISO container equipment (DE:8053 = 'CN') and if its ISO type is known then send the Size/Type information according to ISO 6346 (2nd, 3rd edition and ammendments).			
	Otherwise use UN/EDIFACT code list for Data Element 8155.			
	Refer to D.16A Data Element Dictionary for acceptable code values.			
<b>1131</b>	<b>Code list identification code</b>	<b>C</b>	<b>an..17</b>	<b>O</b>
	Code identifying a user or association maintained code list.			
	102	Size and type		
<b>3055</b>	<b>Code list responsible agency code</b>	<b>C</b>	<b>an..3</b>	<b>O</b>
	Code specifying the agency responsible for a code list.			
	5	ISO (International Organization for Standardization)		
	6	UN/ECE (United Nations - Economic Commission for Europe)		
<b>8154</b>	<b>Equipment size and type description</b>	<b>C</b>	<b>an..35</b>	<b>X</b>
<b>8077</b>	<b>EQUIPMENT SUPPLIER CODE</b>	<b>C</b>	<b>1 an..3</b>	<b>X</b>
<b>8249</b>	<b>EQUIPMENT STATUS CODE</b>	<b>C</b>	<b>1 an..3</b>	<b>O</b>
	Code specifying the status of equipment.			
	2	Export		
	3	Import		
	6	Transhipment		
<b>8169</b>	<b>FULL OR EMPTY INDICATOR CODE</b>	<b>C</b>	<b>1 an..3</b>	<b>O</b>
	Code indicating whether an object is full or empty.			
	4	Empty		
	5	Full		
<b>4233</b>	<b>MARKING INSTRUCTIONS CODE</b>	<b>C</b>	<b>1 an..3</b>	<b>X</b>

**Group:** **NAD** Segment Group 1: Name and Address  
**Position:** 00090  
**Group:**  
**Level:** 1  
**Usage:** Conditional (Optional)  
**Max Use:** 3  
**Purpose:** A group of segments identifying party details, including contact and communication contact information.  
**Notes:** Usage complemented in local document if mentioned in that document.

In this process the document responsible entity will be the Customs and the message sender will be the Port Authority. This group will be send in order to specify the Customs office responsible for the decision being notified, the message sender, and the message receiver.

#### Segment Summary

	<b>Pos.</b>	<b>Seg.</b>		<b>Req.</b>	<b>Max.</b>	<b>Group:</b>
	<b><u>No.</u></b>	<b><u>ID</u></b>	<b><u>Name</u></b>	<b><u>Des.</u></b>	<b><u>Use</u></b>	<b><u>Repeat</u></b>
M	00100	NAD	Name and Address	M	1	

**Segment:** **NAD** Name and Address  
**Position:** 00100 (Trigger Segment)  
**Group:** Segment Group 1 (Name and Address) Conditional (Optional)  
**Level:** 1  
**Usage:** Mandatory  
**Max Use:** 1  
**Purpose:** A segment to identify the name and/or address of the party related to all information at the lower level of the message. For example, the importer.

**Dependency Notes:****Semantic Notes:****Comments:**

**Notes:** Example: Leixões Customs office is PT000340

NAD+CM+PT000340:113'

Example: Message sender is PT501449752

NAD+MS+PT50449752:167'

**Data Element Summary**

<u>Data Element</u>	<u>Component Element</u>	<u>Name</u>	<u>Base Attributes</u>			<u>User Attributes</u>
3035		<b>PARTY FUNCTION CODE QUALIFIER</b>	M	1	an..3	M
		Code giving specific meaning to a party.				
		CM Customs				
		MR Message recipient				
		MS Document/message issuer/sender				
C082		<b>PARTY IDENTIFICATION DETAILS</b>	C	1		O
		Identification of a transaction party by code.				
	3039	<b>Party identifier</b>	M		an..35	M
		Code specifying the identity of a party.				
	1131	<b>Code list identification code</b>	C		an..17	O
		Code identifying a user or association maintained code list.				
		113 Customs office				
		160 Party identification				
		167 Tax party identification				
	3055	<b>Code list responsible agency code</b>	C		an..3	X
C058		<b>NAME AND ADDRESS</b>	C	1		X
		Unstructured name and address: one to five lines.				
	3124	<b>Name and address description</b>	M		an..35	X
		Free form description of a name and address line.				
	3124	<b>Name and address description</b>	C		an..35	X

		Free form description of a name and address line.			
	3124	<b>Name and address description</b>	C	an..35	X
		Free form description of a name and address line.			
	3124	<b>Name and address description</b>	C	an..35	X
		Free form description of a name and address line.			
	3124	<b>Name and address description</b>	C	an..35	X
		Free form description of a name and address line.			
C080		<b>PARTY NAME</b>	C	1	X
		Identification of a transaction party by name, one to five lines. Party name may be formatted.			
	3036	<b>Party name</b>	M	an..70	X
		Name of a party.			
	3036	<b>Party name</b>	C	an..70	X
		Name of a party.			
	3036	<b>Party name</b>	C	an..70	X
		Name of a party.			
	3036	<b>Party name</b>	C	an..70	X
		Name of a party.			
	3036	<b>Party name</b>	C	an..70	X
		Name of a party.			
	3045	<b>Party name format code</b>	C	an..3	X
		Code specifying the representation of a party name.			
C059		<b>STREET</b>	C	1	X
		Street address and/or PO Box number in a structured address: one to four lines.			
	3042	<b>Street and number or post office box identifier</b>	M	an..35	X
		To identify a street and number and/or Post Office box number.			
	3042	<b>Street and number or post office box identifier</b>	C	an..35	X
		To identify a street and number and/or Post Office box number.			
	3042	<b>Street and number or post office box identifier</b>	C	an..35	X
		To identify a street and number and/or Post Office box number.			
	3042	<b>Street and number or post office box identifier</b>	C	an..35	X
		To identify a street and number and/or Post Office box number.			
3164		<b>CITY NAME</b>	C	1 an..35	X
C819		<b>COUNTRY SUBDIVISION DETAILS</b>	C	1	X
		To specify a country subdivision, such as state, canton, county, prefecture.			
	3229	<b>Country subdivision identifier</b>	C	an..9	X
		To identify a country subdivision, such as state, canton, county, prefecture.			
	1131	<b>Code list identification code</b>	C	an..17	X
		Code identifying a user or association maintained code list.			
	3055	<b>Code list responsible agency code</b>	C	an..3	X

	Code specifying the agency responsible for a code list.				
<b>3228</b>	<b>Country subdivision name</b>	<b>C</b>	<b>an..70</b>	<b>X</b>	
	Name of a country subdivision, such as state, canton, county, prefecture.				
<b>3251</b>	<b>POSTAL IDENTIFICATION CODE</b>	<b>C</b>	<b>1 an..17</b>	<b>X</b>	
<b>3207</b>	<b>COUNTRY IDENTIFIER</b>	<b>C</b>	<b>1 an..3</b>	<b>X</b>	

**Group:** **RFF** Segment Group 3: Reference  
**Position:** 00140  
**Group:**  
**Level:** 1  
**Usage:** Conditional (Optional)  
**Max Use:** 4  
**Purpose:** A group of segments identifying references, dates and locations related information.  
**Notes:** Usage complemented in local document if mentioned in that document.

This group has the following purposes.

One is to identify the document that is being sent. In element RFF:1153 will have 'AAK'.

Although optional, in the JUL implementation this is the preferred way to identify a visit id (vessel or other means of transport call). The usage is to put this id in RFF:1154 associated with qualifier 'ATZ' in RFF:1153. This identification is provided by the JUL system.

Another is to refer a previous message (BGM:1225 <> '9') if needed. In element RFF:1153 will have 'ACW'. When referring to previous messages, the methodology follows ITIGG's JM4/208 recommendation as stated in document JM4/ITIGG/96.101/v.131, with the exception of the inclusion of date information.

A last usage is to identify the document that was the base for the Customs decision being notified. In RFF:1153 will appear 'ANK' or 'ABT'. This applies to situations where a set of transport equipment is included under the same document. This usage is an alternative to the usage of SG6 (DOC) and it is not applicable to general cargo shipments.

#### Segment Summary

	<b>Pos.</b>	<b>Seg.</b>		<b>Req.</b>	<b>Max.</b>	<b>Group:</b>
	<b><u>No.</u></b>	<b><u>ID</u></b>	<b><u>Name</u></b>	<b><u>Des.</u></b>	<b><u>Use</u></b>	<b><u>Repeat</u></b>
M	00150	RFF	Reference	M	1	
O	00160	DTM	Date/Time/Period	C	1	



**Segment:** **RFF** Reference  
**Position:** 00150 (Trigger Segment)  
**Group:** Segment Group 3 (Reference) Conditional (Optional)  
**Level:** 1  
**Usage:** Mandatory  
**Max Use:** 1  
**Purpose:** A segment identifying references (e.g. manifest number).  
**Dependency Notes:**  
**Semantic Notes:**  
**Comments:**

**Notes:** Example: Leixões visit id PTLEI12018001032

RFF+ATZ:PTLEI12018001032'

Example: Despatch advice number 465869/2018

RFF+ANK:465869/2018'

#### Data Element Summary

<u>Data Element</u>	<u>Component Element</u>	<u>Name</u>	<u>Base Attributes</u>		<u>User Attributes</u>
C506		REFERENCE	M	1	M
		Identification of a reference.			
	1153	Reference code qualifier	M	an..3	M
		Code qualifying a reference.			
		AAK Despatch advice number			
		ABT Goods declaration document identifier, Customs			
		ACW Reference number to previous message			
		ANK Reference number assigned by third party			
		ATZ Ship's stay reference number			
	1154	Reference identifier	C	an..70	R
		Identifies a reference.			
	1156	Document line identifier	C	an..6	X
	1056	Version identifier	C	an..9	X
	1060	Revision identifier	C	an..6	X

**Segment:** **DTM** Date/Time/Period  
**Position:** 00160  
**Group:** Segment Group 3 (Reference) Conditional (Optional)  
**Level:** 2  
**Usage:** Conditional (Optional)  
**Max Use:** 1  
**Purpose:** A segment identifying a date related to the preceding RFF.  
**Dependency Notes:**  
**Semantic Notes:**  
**Comments:**

**Notes:** Usage complemented in local document if mentioned in that document.

The complete meaning of this date depends of the type of reference in the previous RFF segment, stated in RFF:C506:1153 data element.

Example: Date/time of the reference: "2003/10/08 - 10:15"

DTM+171:200310081015:203'

#### Data Element Summary

<u>Data Element</u>	<u>Component Element</u>	<u>Name</u>	<u>Base Attributes</u>		<u>User Attributes</u>
C507		DATE/TIME/PERIOD	M	1	M
		Date and/or time, or period relevant to the specified date/time/period type.			
	2005	<b>Date or time or period function code qualifier</b>	M	an..3	M
		Code qualifying the function of a date, time or period.			
		171 Reference date/time			
	2380	<b>Date or time or period text</b>	C	an..35	R
		The value of a date, a date and time, a time or of a period in a specified representation.			
	2379	<b>Date or time or period format code</b>	C	an..3	R
		Code specifying the representation of a date, time or period.			
		203 CCYYMMDDHHMM			

<b>Group:</b>	<b>DOC</b> Segment Group 6: Document/Message Details
<b>Position:</b>	00270
<b>Group:</b>	
<b>Level:</b>	1
<b>Usage:</b>	Conditional (Optional)
<b>Max Use:</b>	99999
<b>Purpose:</b>	A group of segments specifying goods item details including status of goods, related references, package identification, details of transport, relevant parties, contacts, dates and/or times and location, general indicators, measurements, documentary requirements, monetary amounts, currencies and item taxes, fees and duties.
<b>Notes:</b>	<p>Usage complemented in local document if mentioned in that document.</p> <p>This group is to provide data about the transport equipment or general cargo shipments over which the Customs decision being notified in the message applies, grouped by the document that was the base for the decision.</p> <p>The type of document can be diverse. For that reason, only one qualifier was adopted for DOC:1001 of syntax purposes.</p> <p>Transport equipment is identified by SG6:EQD.</p> <p>If more than 1 unit exist under the same decision support document, the following principle is adopted. An occurrence of SG6 (DOC) with an incremented version in DOC:1056 repeating value in DOC:1004 must exist for each entrance document (example, discharge report) mentioned, or if more than 999 transport equipments must be described.</p> <p>As an example, supposing that decision is based on the single document 13PT00034010261071 on import, issue by 2019/04/23 15:30, and we are in the presence of containers CNXU3690209, TCNU6047377 and MSKU7654321, all of ISO type 20GP. However, TCNU6047377 and MSKU7654321 were reported in the same discharge list. For the described scenario, the segment sequence would be something like:</p> <pre> ... DOC+932+13PT00034010261071:::1' RFF+ABO:DischargeReport#1' ... EQD+CN+CNXU3690209+20GP:102:5++3+5' ... DOC+932+13PT00034010261071:::2' RFF+ABO:DischargeReport#2' ... EQD+CN+TCNU6047377+20GP:102:5++3+5' EQD+CN+MSKU7654321+20GP:102:5++3+5' ... </pre> <p>General cargo shipment is identified by considering the values in the following segments:</p>

- RFF with RFF:1153 = 'BM'
- RFF with RFF:1153 = 'UCN' if this reference was previously provided by the terminal operator
- PAC
- PCI
- MEA

However, if there is the need to describe more marks and numbers than the number allowed in the message definition of each occurrence of SG6 (DOC), then a new occurrence must exist, having an incremented version in DOC segment, and repeating the values for the transport document and unique reference number.

In this context suppose the following scenario. One customs document, identified by 13PT0034010261122 supports the decision being notified related with the following goods:

- In Bill of Lading 0A there are 2 shipments associated to terminal operator references 001 and 002. The shipment 001 is made of 2 unmarked volumes with a total weight of 530.000,00 Kgm. The shipment 002 is made of 6 volumes associated to marks and numbers ABC and XYZ, having a total weight of 250.000,00 Kgm. However, there is no information what the relation is between marks and numbers, and volumes.

- In Bill of Lading 0B there are also 2 shipments associates to terminal operator references 003 and 004. Shipment 003 is just 1 unmarked volume with weight 32.000,00 Kgm. Shipment 004 is made of 113 volumes marked with LOT#010 to LOT#122, having a total weight of 102.000,00 Kgm. Again, there is no guarantee on the relations between marks and numbers, and volumes.

The application of the MIG definition to this example would be something like the following:

```

...
DOC+932+13PT0034010261122:::1'
PAC+2++...'
RFF+BM:0A'
...
RFF+UCN:001'
...
PCI++NO MARKS'
...
MEA+AAE+AAB+KGM:530000'
...
DOC+932+13PT0034010261122:::2'
PAC+6++...'
RFF+BM:0A'
...
RFF+UCN:002'
...
PCI++ABC:XYZ'

```

```

...
MEA+AAE+AAB+KGM:250000'
...
DOC+932+13PT0034010261122:::3'
PAC+1++...'
RFF+BM:0B'
...
RFF+UCN:003'
...
PCI++NO MARKS'
...
MEA+AAE+AAB+KGM:32000'
...
DOC+932+13PT0034010261122:::4'
PAC+113++...'
RFF+BM:0B'
...
RFF+UCN:004'
...
PCI++LOT#010:LOT#011:LOT#012:LOT#013:LOT#014:LOT#015:LOT#016:LOT#0
17:LOT#018:LOT#019'
PCI++LOT#020:LOT#021:LOT#022:LOT#023:LOT#024:LOT#025:LOT#026:LOT#0
27:LOT#028:LOT#029'
PCI++LOT#030:....:LOT#039'
PCI++LOT#040:....:LOT#049'
PCI++LOT#050:....:LOT#059'
PCI++LOT#060:....:LOT#069'
PCI++LOT#070:....:LOT#079'
PCI++LOT#080:....:LOT#089'
PCI++LOT#090:....:LOT#099'
...
MEA+AAE+AAB+KGM:102000'
...
DOC+932+13PT0034010261122:::5'
RFF+BM:0B'
...
RFF+UCN:004'
...
PCI++LOT#100:....:LOT#109'
PCI++LOT#110:....:LOT#119'
PCI++LOT#120:LOT#121:LOT#122'
...

```

### Segment Summary

	<b>Pos.</b>	<b>Seg.</b>		<b>Req.</b>	<b>Max.</b>	<b>Group:</b>
	<b>No.</b>	<b>ID</b>	<b>Name</b>	<b>Des.</b>	<b>Use</b>	<b>Repeat</b>
M	00280	DOC	Document/Message Details	M	1	
D	00290	PAC	Package	C	1	
O	00300	RFF	Reference	C	9	

D	00310	PCI	Package Identification	C	9	
O	00350	DTM	Date/Time/Period	C	1	
D	00370	MEA	Measurements	C	1	
D	00380	EQD	Equipment Details	C	999	
	00390		Segment Group 7: Name and Address	C		1

**Segment:** **DOC** Document/Message Details  
**Position:** 00280 (Trigger Segment)  
**Group:** Segment Group 6 (Document/Message Details) Conditional (Optional)  
**Level:** 1  
**Usage:** Mandatory  
**Max Use:** 1  
**Purpose:** A segment to identify the master bill number reported in a multi-consignment message. This segment can also be used to identify the Customs declaration where the CUSRES is responding to multiple declarations.

**Dependency Notes:****Semantic Notes:****Comments:**

**Notes:** This segment is to identify the document used as base for the Customs decision being notified.

Example: Document identified by 13PT0034010261122, version 4

DOC+932+13PT0034010261122:::4'

**Data Element Summary**

<u>Data Element</u>	<u>Component Element</u>	<u>Name</u>	<u>Base Attributes</u>		<u>User Attributes</u>
C002		DOCUMENT/MESSAGE NAME	M	1	M
		Identification of a type of document/message by code or name. Code preferred.			
	1001	Document name code	C	an..3	R
		Code specifying the document name.			
		932 Customs delivery note			
	1131	Code list identification code	C	an..17	X
	3055	Code list responsible agency code	C	an..3	X
	1000	Document name	C	an..35	X
C503		DOCUMENT/MESSAGE DETAILS	C	1	R
		Identification of document/message by number, status, source and/or language.			
	1004	Document identifier	C	an..70	R
		To identify a document.			
	1373	Document status code	C	an..3	X
	1366	Document source description	C	an..70	X
	3453	Language name code	C	an..3	X
	1056	Version identifier	C	an..9	R
		To identify a version.			
		This element is used to distinguish between diferent occurences of the same document identified in DOC:1004.			
	1060	Revision identifier	C	an..6	X
3153		COMMUNICATION MEDIUM TYPE CODE	C	1 an..3	X

<b>1220</b>	<b>DOCUMENT COPIES REQUIRED QUANTITY</b>	<b>C</b>	<b>1</b>	<b>n..2</b>	<b>X</b>
<b>1218</b>	<b>DOCUMENT ORIGINALS REQUIRED QUANTITY</b>	<b>C</b>	<b>1</b>	<b>n..2</b>	<b>X</b>



**Segment:** **PAC** Package  
**Position:** 00290  
**Group:** Segment Group 6 (Document/Message Details) Conditional (Optional)  
**Level:** 2  
**Usage:** Conditional (Dependent)  
**Max Use:** 1  
**Purpose:** A segment identifying number and type of packages.  
**Dependency Notes:**  
**Semantic Notes:**  
**Comments:**

**Notes:** This segment is to be used in case the Customs decision notification is related with general cargo shipment, not inside transport equipment. It reports the number and type of volumes. If it is a bulk cargo (solid or liquid) then the number of volumes is 1 (one).

Example: The general cargo shipment is made of 8 barrels.

PAC+8++BA'

#### Data Element Summary

<u>Data Element</u>	<u>Component Element</u>	<u>Name</u>	<u>Base Attributes</u>		<u>User Attributes</u>
7224		<b>PACKAGE QUANTITY</b> To specify the number of packages.	C	1 n..8	R
C531		<b>PACKAGING DETAILS</b> Packaging level and details, terms and conditions.	C	1	X
	7075	<b>Packaging level code</b> Code specifying a level of packaging.	C	an..3	X
	7233	<b>Packaging related description code</b> Code specifying information related to packaging.	C	an..3	X
	7073	<b>Packaging terms and conditions code</b> Code specifying the packaging terms and conditions.	C	an..3	X
C202		<b>PACKAGE TYPE</b> Type of package by name or by code from a specified source.	C	1	R
	7065	<b>Package type description code</b> Code specifying the type of package. Type of volumes according to UN/ECE Recommendation 21 - Code for Types of Cargo, Packages and Packing Materials Revision 4 to Annex V and Annex VI.	C	an..17	R
	1131	<b>Code list identification code</b>	C	an..17	X
	3055	<b>Code list responsible agency code</b>	C	an..3	X
	7064	<b>Type of packages</b>	C	an..35	X
C402		<b>PACKAGE TYPE IDENTIFICATION</b> Identification of the form in which goods are described.	C	1	X

	<b>7077</b>	<b>Description format code</b>	<b>M</b>	<b>an..3</b>	<b>X</b>
		Code specifying the format of a description.			
	<b>7064</b>	<b>Type of packages</b>	<b>M</b>	<b>an..35</b>	<b>X</b>
		Description of the form in which goods are presented.			
	<b>7143</b>	<b>Item type identification code</b>	<b>C</b>	<b>an..3</b>	<b>X</b>
		Coded identification of an item type.			
	<b>7064</b>	<b>Type of packages</b>	<b>C</b>	<b>an..35</b>	<b>X</b>
		Description of the form in which goods are presented.			
	<b>7143</b>	<b>Item type identification code</b>	<b>C</b>	<b>an..3</b>	<b>X</b>
		Coded identification of an item type.			
<b>C532</b>		<b>RETURNABLE PACKAGE DETAILS</b>	<b>C</b>	<b>1</b>	<b>X</b>
		Indication of responsibility for payment and load contents of returnable packages.			
	<b>8395</b>	<b>Returnable package freight payment responsibility code</b>	<b>C</b>	<b>an..3</b>	<b>X</b>
		Code specifying the responsibility for the freight payment for a returnable package.			
	<b>8393</b>	<b>Returnable package load contents code</b>	<b>C</b>	<b>an..3</b>	<b>X</b>
		Code specifying the load contents for a returnable package.			

**Segment:** **RFF** Reference  
**Position:** 00300  
**Group:** Segment Group 6 (Document/Message Details) Conditional (Optional)  
**Level:** 2  
**Usage:** Conditional (Optional)  
**Max Use:** 9  
**Purpose:** A segment identifying a particular reference, e.g. house of bill number, master bill number.

**Dependency Notes:****Semantic Notes:****Comments:**

**Notes:** This segment is to specify several references.

The first usage is to reference the document that declared the transport equipment or general cargo shipment entrance. For the first situation two references will be given, so the segment RFF will occur twice.

One is the original document number given by the responsible entity to the document that reported the occurred or imminent entrance of the goods in the port or other facility. If this document is a discharge or a gate-in report, then DE:1153 = 'ABO'. If the document is a discharge order/instruction or an announcement, then DE:1153 = 'ADO'.

The other is the document reference created in the Port Community System (PCS) when the above mentioned document was submitted (DE:1153 = 'CAW').

The second usage is to reference the Bill of Lading and/or the Booking number (DE:1153 in {'BM', 'BN'}). Note that on situations of general cargo shipments, the Bill of Lading reference has to be provided.

The third usage, applicable on general cargo shipment situations, refers to the unique consignment number if it was previously provided by the terminal operator (DE:1153 = 'UCN'). This number provides complementary data to identify the shipment, together with the transport document identification, given in another occurrence of this segment.

This reference refers to documents and not to messages.

Example: Booking number NB/0123/03.

RFF+BN:NB/0123/03'

Example: Entrance document 2000/7256 provided by the terminal operator.

RFF+ABO:2000/7256'

Example: Unique consignment number of a particular general cargo shipment is 56648

RFF+UCN:56648'

<b>Data Element Summary</b>					
<b>Data Element</b>	<b>Component Element</b>	<b>Name</b>	<b>Base Attributes</b>		<b>User Attributes</b>
<b>C506</b>		<b>REFERENCE</b>	<b>M</b>	<b>1</b>	<b>M</b>
		Identification of a reference.			
	<b>1153</b>	<b>Reference code qualifier</b>	<b>M</b>	<b>an..3</b>	<b>M</b>
		Code qualifying a reference.			
		ABO			Originator's reference
		ADO			Container work order reference number
		BM			Bill of lading number
		BN			Consignment identifier, carrier assigned
		CAW			Document reference, internal
		CV			Container operators reference number
					Only for backward compability. It will be treated like 'ABO'.
		ER			Container/equipment receipt number
					Only for backward compability. It will be treated like 'ABO'.
		UCN			Unique consignment reference number
	<b>1154</b>	<b>Reference identifier</b>	<b>C</b>	<b>an..70</b>	<b>O</b>
		Identifies a reference.			
	<b>1156</b>	<b>Document line identifier</b>	<b>C</b>	<b>an..6</b>	<b>X</b>
	<b>1056</b>	<b>Version identifier</b>	<b>C</b>	<b>an..9</b>	<b>X</b>
	<b>1060</b>	<b>Revision identifier</b>	<b>C</b>	<b>an..6</b>	<b>X</b>

**Segment:** **PCI** **Package Identification**  
**Position:** 00310  
**Group:** Segment Group 6 (Document/Message Details) Conditional (Optional)  
**Level:** 2  
**Usage:** Conditional (Dependent)  
**Max Use:** 9  
**Purpose:** A segment identifying marking and labels on individual shipping or packing units.  
**Dependency Notes:**  
**Semantic Notes:**  
**Comments:**

**Notes:** This segment is to be used in case of Customs decision notification is related with a general cargo shipment. Its usage is to provide Marks & Numbers information.

If no Marks & Numbers are present, because they were not put or it is a break bulk cargo, then report "NO MARKS".

Considering all possible occurrences of this segment in the group, and the number of 7102 data elements in the segment, then for each occurrence of SG6 (DOC), 90 values of Marks & Numbers can be provided. As it is possible that a single general cargo shipment can have more than 90 values, a special usage of group SG6 (DOC) is adopted and its usage explained in the group notes.

Example: The general cargo shipment has the following Marks & Numbers: L232, L281, L293, L295, L324, L330, L334

PCI++L232:L281:L293:L295:L324:L330:L334'

Example: It is a situation of bulk cargo

PCI++NO MARKS'

#### Data Element Summary

<u>Data Element</u>	<u>Component Element</u>	<u>Name</u>	<u>Base Attributes</u>		<u>User Attributes</u>
4233		MARKING INSTRUCTIONS CODE	C	1 an..3	X
C210		MARKS & LABELS	C	1	R
		Shipping marks on packages in free text; one to ten lines.			
	7102	Shipping marks description	M	an..35	M
		Free form description of the shipping marks.			
	7102	Shipping marks description	C	an..35	O
		Free form description of the shipping marks.			
	7102	Shipping marks description	C	an..35	O
		Free form description of the shipping marks.			
	7102	Shipping marks description	C	an..35	O
		Free form description of the shipping marks.			

	<b>7102</b>	<b>Shipping marks description</b> Free form description of the shipping marks.	<b>C</b>		<b>an..35</b>	<b>O</b>
	<b>7102</b>	<b>Shipping marks description</b> Free form description of the shipping marks.	<b>C</b>		<b>an..35</b>	<b>O</b>
	<b>7102</b>	<b>Shipping marks description</b> Free form description of the shipping marks.	<b>C</b>		<b>an..35</b>	<b>O</b>
	<b>7102</b>	<b>Shipping marks description</b> Free form description of the shipping marks.	<b>C</b>		<b>an..35</b>	<b>O</b>
	<b>7102</b>	<b>Shipping marks description</b> Free form description of the shipping marks.	<b>C</b>		<b>an..35</b>	<b>O</b>
	<b>7102</b>	<b>Shipping marks description</b> Free form description of the shipping marks.	<b>C</b>		<b>an..35</b>	<b>O</b>
<b>8169</b>		<b>FULL OR EMPTY INDICATOR CODE</b>	<b>C</b>	<b>1</b>	<b>an..3</b>	<b>X</b>
<b>C827</b>		<b>TYPE OF MARKING</b> Specification of the type of marking that reflects the method that was used and the conventions adhered to for marking (e.g. of packages).	<b>C</b>	<b>1</b>		<b>X</b>
	<b>7511</b>	<b>Marking type code</b> Code specifying the type of marking.	<b>M</b>		<b>an..3</b>	<b>X</b>
	<b>1131</b>	<b>Code list identification code</b> Code identifying a user or association maintained code list.	<b>C</b>		<b>an..17</b>	<b>X</b>
	<b>3055</b>	<b>Code list responsible agency code</b> Code specifying the agency responsible for a code list.	<b>C</b>		<b>an..3</b>	<b>X</b>

**Segment:** **DTM** Date/Time/Period  
**Position:** 00350  
**Group:** Segment Group 6 (Document/Message Details) Conditional (Optional)  
**Level:** 2  
**Usage:** Conditional (Optional)  
**Max Use:** 1  
**Purpose:** A segment identifying necessary dates.  
**Dependency Notes:**  
**Semantic Notes:**  
**Comments:**  
**Notes:** This segment is to provide the date and time of the decision.

Example: Date/time of the reference: "2003/10/08 - 10:15"

DTM+58:200310081015:203'

#### Data Element Summary

<u>Data Element</u>	<u>Component Element</u>	<u>Name</u>	<u>Base Attributes</u>		<u>User Attributes</u>
C507		<b>DATE/TIME/PERIOD</b>	<b>M</b>	<b>1</b>	<b>M</b>
		Date and/or time, or period relevant to the specified date/time/period type.			
	2005	<b>Date or time or period function code qualifier</b>	<b>M</b>	<b>an..3</b>	<b>M</b>
		Code qualifying the function of a date, time or period.			
		58 Clearance date (Customs)			
	2380	<b>Date or time or period text</b>	<b>C</b>	<b>an..35</b>	<b>O</b>
		The value of a date, a date and time, a time or of a period in a specified representation.			
	2379	<b>Date or time or period format code</b>	<b>C</b>	<b>an..3</b>	<b>O</b>
		Code specifying the representation of a date, time or period.			
		203 CCYYMMDDHHMM			

**Segment:** **MEA** Measurements  
**Position:** 00370  
**Group:** Segment Group 6 (Document/Message Details) Conditional (Optional)  
**Level:** 2  
**Usage:** Conditional (Dependent)  
**Max Use:** 1  
**Purpose:** Segment identifying various measurement values.  
**Dependency Notes:**  
**Semantic Notes:**  
**Comments:**

**Notes:** This segment is to be used in case of Customs decision notification is related with a general cargo shipment. This segment is used to provide information about the weight.

Example: General cargo shipment weight 123753 kilograms.

MEA+AAE+AAB+KGM:123753'

#### Data Element Summary

<u>Data Element</u>	<u>Component Element</u>	<u>Name</u>	<u>Base Attributes</u>		<u>User Attributes</u>
6311		<b>MEASUREMENT PURPOSE CODE QUALIFIER</b>	<b>M</b>	<b>1 an..3</b>	<b>M</b>
		Code qualifying the purpose of the measurement.			
	AAE	Measurement			
C502		<b>MEASUREMENT DETAILS</b>	<b>C</b>	<b>1</b>	<b>O</b>
		Identification of measurement type.			
	6313	<b>Measured attribute code</b>	<b>C</b>	<b>an..3</b>	<b>O</b>
		Code specifying the attribute measured.			
	AAB	Goods item gross weight			
	6321	<b>Measurement significance code</b>	<b>C</b>	<b>an..3</b>	<b>X</b>
	6155	<b>Non-discrete measurement name code</b>	<b>C</b>	<b>an..17</b>	<b>X</b>
	6154	<b>Non-discrete measurement name</b>	<b>C</b>	<b>an..70</b>	<b>X</b>
C174		<b>VALUE/RANGE</b>	<b>C</b>	<b>1</b>	<b>O</b>
		Measurement value and relevant minimum and maximum values of the measurement range.			
	6411	<b>Measurement unit code</b>	<b>C</b>	<b>an..8</b>	<b>O</b>
		Code specifying the unit of measurement.			
	KGM	Kilograms			
	6314	<b>Measure</b>	<b>C</b>	<b>an..18</b>	<b>O</b>
		To specify the value of a measurement.			
	6162	<b>Range minimum quantity</b>	<b>C</b>	<b>n..18</b>	<b>X</b>
	6152	<b>Range maximum quantity</b>	<b>C</b>	<b>n..18</b>	<b>X</b>
	6432	<b>Significant digits quantity</b>	<b>C</b>	<b>n..2</b>	<b>X</b>



7383

**SURFACE OR LAYER CODE**

**C 1 an..3 X**

**Segment:** **EQD** Equipment Details  
**Position:** 00380  
**Group:** Segment Group 6 (Document/Message Details) Conditional (Optional)  
**Level:** 2  
**Usage:** Conditional (Dependent)  
**Max Use:** 999  
**Purpose:** A segment identifying equipment initials and numbers.

**Dependency Notes:****Semantic Notes:****Comments:**

**Notes:** Use this segment when the Customs decision notification is related with transport equipment.

This segment is to identify the transport equipment, its size/type, its status and if it is full or empty.

If the transport equipment is other than an ISO container then DE:8155 shall have the proper value from the EDIFACT code list associated with this element.

If the transport equipment is an ISO container then DE:8155 shall have the ISO type according standard ISO 6346. If this code is unknown then place the proper value from EDIFACT code list associated with this element.

Example: Container CGTU 200311/5, 20 ft, export/load, full.

EQD+CN+CGTU2003115+21:102:6++2+5'

Example: Container GSTU 000029/0, 40 ft General purpose (ISO 40GP), transhipped, empty

EQD+CN+GSTU0000290+40GP:102:5++6+4'

Example: Trailer Z-53791, import/unload, full

EQD+TE+Z53791+14:102:6++3+5'

**Data Element Summary**

<u>Data Element</u>	<u>Component Element</u>	<u>Name</u>	<u>Base Attributes</u>	<u>User Attributes</u>
8053		EQUIPMENT TYPE CODE QUALIFIER	M 1 an..3	M
		Code qualifying a type of equipment.		
	BPP	Truck and trailer combination being transported		
		It will be treated like 'TE'.		
	CH	Chassis		
		It will be treated like 'TE'.		
	CN	Container		

	PA	Pallet			
	PL	Platform			
	SW	Swap body			
		It will be treated like 'CN'.			
	TE	Trailer			
<b>C237</b>	<b>EQUIPMENT IDENTIFICATION</b>		<b>C</b>	<b>1</b>	<b>R</b>
	Marks (letters/numbers) identifying equipment.				
<b>8260</b>	<b>Equipment identifier</b>		<b>C</b>	<b>an..17</b>	<b>R</b>
	To identify equipment.				
<b>1131</b>	<b>Code list identification code</b>		<b>C</b>	<b>an..17</b>	<b>X</b>
<b>3055</b>	<b>Code list responsible agency code</b>		<b>C</b>	<b>an..3</b>	<b>X</b>
<b>3207</b>	<b>Country identifier</b>		<b>C</b>	<b>an..3</b>	<b>X</b>
<b>C224</b>	<b>EQUIPMENT SIZE AND TYPE</b>		<b>C</b>	<b>1</b>	<b>O</b>
	Code and or name identifying size and type of equipment. Code preferred.				
<b>8155</b>	<b>Equipment size and type description code</b>		<b>C</b>	<b>an..10</b>	<b>R</b>
	Code specifying the size and type of equipment.				
	In case of ISO container equipment (DE:8053 = 'CN') and if its ISO type is known then send the Size/Type information according to ISO 6346 (2nd, 3rd edition and ammendments).				
	Otherwise use UN/EDIFACT code list for Data Element 8155.				
	Refer to D.16A Data Element Dictionary for acceptable code values.				
<b>1131</b>	<b>Code list identification code</b>		<b>C</b>	<b>an..17</b>	<b>O</b>
	Code identifying a user or association maintained code list.				
	102	Size and type			
<b>3055</b>	<b>Code list responsible agency code</b>		<b>C</b>	<b>an..3</b>	<b>O</b>
	Code specifying the agency responsible for a code list.				
	5	ISO (International Organization for Standardization)			
	6	UN/ECE (United Nations - Economic Commission for Europe)			
<b>8154</b>	<b>Equipment size and type description</b>		<b>C</b>	<b>an..35</b>	<b>X</b>
<b>8077</b>	<b>EQUIPMENT SUPPLIER CODE</b>		<b>C</b>	<b>1 an..3</b>	<b>X</b>
<b>8249</b>	<b>EQUIPMENT STATUS CODE</b>		<b>C</b>	<b>1 an..3</b>	<b>O</b>
	Code specifying the status of equipment.				
	2	Export			
	3	Import			
	6	Transshipment			
<b>8169</b>	<b>FULL OR EMPTY INDICATOR CODE</b>		<b>C</b>	<b>1 an..3</b>	<b>O</b>
	Code indicating whether an object is full or empty.				
	4	Empty			
	5	Full			
<b>4233</b>	<b>MARKING INSTRUCTIONS CODE</b>		<b>C</b>	<b>1 an..3</b>	<b>X</b>

**Group:** **NAD** Segment Group 7: Name and Address  
**Position:** 00390  
**Group:** Segment Group 6 (Document/Message Details) Conditional (Optional)  
**Level:** 2  
**Usage:** Conditional (Optional)  
**Max Use:** 1  
**Purpose:** A group of segments identifying information on the party and other contact and communication contact information related only to part of the message.  
**Notes:** Usage complemented in local document if mentioned in that document.

This group is to identify entities related with the transport equipment or general cargo shipment over which the Customs decision was taken.

#### Segment Summary

	<b>Pos.</b>	<b>Seg.</b>		<b>Req.</b>	<b>Max.</b>	<b>Group:</b>
	<b><u>No.</u></b>	<b><u>ID</u></b>	<b><u>Name</u></b>	<b><u>Des.</u></b>	<b><u>Use</u></b>	<b><u>Repeat</u></b>
M	00400	NAD	Name and Address	M	1	

**Segment:** **NAD** Name and Address  
**Position:** 00400 (Trigger Segment)  
**Group:** Segment Group 7 (Name and Address) Conditional (Optional)  
**Level:** 2  
**Usage:** Mandatory  
**Max Use:** 1  
**Purpose:** A segment identifying information about a party related only to a part of the message. For example, in a message with several release notes or in a message related to several declarations, a customs agent and the person responsible for the information.

**Dependency Notes:****Semantic Notes:****Comments:**

**Notes:** Usage complemented in local document if mentioned in that document.

The entities are to be identified by their EORI. In Portugal the EORI id is composed by PT+[VAT number].

Example: Shipping agent responsible for the goods is identified by PT541495122.

NAD+AG+PT541495122'

**Data Element Summary**

<b>Data Element</b>	<b>Component Element</b>	<b>Name</b>	<b>Base Attributes</b>			<b>User Attributes</b>
<b>3035</b>		<b>PARTY FUNCTION CODE QUALIFIER</b> Code giving specific meaning to a party. AG Agent	<b>M</b>	<b>1</b>	<b>an..3</b>	<b>M</b>
<b>C082</b>		<b>PARTY IDENTIFICATION DETAILS</b> Identification of a transaction party by code.	<b>C</b>	<b>1</b>		<b>R</b>
	<b>3039</b>	<b>Party identifier</b> Code specifying the identity of a party.	<b>M</b>		<b>an..35</b>	<b>M</b>
	<b>1131</b>	<b>Code list identification code</b> Code identifying a user or association maintained code list.	<b>C</b>		<b>an..17</b>	<b>O</b>
	<b>3055</b>	<b>Code list responsible agency code</b> Code specifying the agency responsible for a code list. Refer to D.16A Data Element Dictionary for acceptable code values.	<b>C</b>		<b>an..3</b>	<b>O</b>
<b>C058</b>		<b>NAME AND ADDRESS</b> Unstructured name and address: one to five lines.	<b>C</b>	<b>1</b>		<b>X</b>
	<b>3124</b>	<b>Name and address description</b> Free form description of a name and address line.	<b>M</b>		<b>an..35</b>	<b>X</b>
	<b>3124</b>	<b>Name and address description</b> Free form description of a name and address line.	<b>C</b>		<b>an..35</b>	<b>X</b>

	<b>3124</b>	<b>Name and address description</b>	<b>C</b>	<b>an..35</b>	<b>X</b>
		Free form description of a name and address line.			
	<b>3124</b>	<b>Name and address description</b>	<b>C</b>	<b>an..35</b>	<b>X</b>
		Free form description of a name and address line.			
	<b>3124</b>	<b>Name and address description</b>	<b>C</b>	<b>an..35</b>	<b>X</b>
		Free form description of a name and address line.			
<b>C080</b>		<b>PARTY NAME</b>	<b>C</b>	<b>1</b>	<b>X</b>
		Identification of a transaction party by name, one to five lines. Party name may be formatted.			
	<b>3036</b>	<b>Party name</b>	<b>M</b>	<b>an..70</b>	<b>X</b>
		Name of a party.			
	<b>3036</b>	<b>Party name</b>	<b>C</b>	<b>an..70</b>	<b>X</b>
		Name of a party.			
	<b>3036</b>	<b>Party name</b>	<b>C</b>	<b>an..70</b>	<b>X</b>
		Name of a party.			
	<b>3036</b>	<b>Party name</b>	<b>C</b>	<b>an..70</b>	<b>X</b>
		Name of a party.			
	<b>3036</b>	<b>Party name</b>	<b>C</b>	<b>an..70</b>	<b>X</b>
		Name of a party.			
	<b>3045</b>	<b>Party name format code</b>	<b>C</b>	<b>an..3</b>	<b>X</b>
		Code specifying the representation of a party name.			
<b>C059</b>		<b>STREET</b>	<b>C</b>	<b>1</b>	<b>X</b>
		Street address and/or PO Box number in a structured address: one to four lines.			
	<b>3042</b>	<b>Street and number or post office box identifier</b>	<b>M</b>	<b>an..35</b>	<b>X</b>
		To identify a street and number and/or Post Office box number.			
	<b>3042</b>	<b>Street and number or post office box identifier</b>	<b>C</b>	<b>an..35</b>	<b>X</b>
		To identify a street and number and/or Post Office box number.			
	<b>3042</b>	<b>Street and number or post office box identifier</b>	<b>C</b>	<b>an..35</b>	<b>X</b>
		To identify a street and number and/or Post Office box number.			
	<b>3042</b>	<b>Street and number or post office box identifier</b>	<b>C</b>	<b>an..35</b>	<b>X</b>
		To identify a street and number and/or Post Office box number.			
<b>3164</b>		<b>CITY NAME</b>	<b>C</b>	<b>1 an..35</b>	<b>X</b>
<b>C819</b>		<b>COUNTRY SUBDIVISION DETAILS</b>	<b>C</b>	<b>1</b>	<b>X</b>
		To specify a country subdivision, such as state, canton, county, prefecture.			
	<b>3229</b>	<b>Country subdivision identifier</b>	<b>C</b>	<b>an..9</b>	<b>X</b>
		To identify a country subdivision, such as state, canton, county, prefecture.			
	<b>1131</b>	<b>Code list identification code</b>	<b>C</b>	<b>an..17</b>	<b>X</b>
		Code identifying a user or association maintained code list.			
	<b>3055</b>	<b>Code list responsible agency code</b>	<b>C</b>	<b>an..3</b>	<b>X</b>
		Code specifying the agency responsible for a code list.			

<b>3228</b>	<b>Country subdivision name</b>	<b>C</b>	<b>an..70</b>	<b>X</b>
	Name of a country subdivision, such as state, canton, county, prefecture.			
<b>3251</b>	<b>POSTAL IDENTIFICATION CODE</b>	<b>C</b>	<b>1 an..17</b>	<b>X</b>
<b>3207</b>	<b>COUNTRY IDENTIFIER</b>	<b>C</b>	<b>1 an..3</b>	<b>X</b>

**Segment:** **CNT** Control Total  
**Position:** 00670  
**Group:**  
**Level:** 1  
**Usage:** Conditional (Required)  
**Max Use:** 2  
**Purpose:** A segment to identify control totals.

**Dependency Notes:****Semantic Notes:****Comments:**

**Notes:** Usage complemented in local document if mentioned in that document.

The segment is to report the total number of occurrences of SG6 (DOC) in the message (DE:6069 = '2').

It is also used to report the total number of equipment of transport in the message (DE6069 = '16'). If none is mentioned then report '0'.

Example: The message reports 20 units.

CNT+16:20'

Example: The messages refers to 3 Customs documents.

CNT+2:3'

**Data Element Summary**

<b>Data Element</b>	<b>Component Element</b>	<b>Name</b>	<b>Base Attributes</b>		<b>User Attributes</b>
<b>C270</b>		<b>CONTROL</b>	<b>M</b>	<b>1</b>	<b>M</b>
		Control total for checking integrity of a message or part of a message.			
	<b>6069</b>	<b>Control total type code qualifier</b>	<b>M</b>	<b>an..3</b>	<b>M</b>
		Code qualifying the type of control of hash total.			
		2			
		Number of line items in message			
		Corresponds to the SG6 (DOC) number of occurrences in the message.			
		16			
		Total number of equipment			
	<b>6066</b>	<b>Control total quantity</b>	<b>M</b>	<b>n..18</b>	<b>M</b>
		To specify the value of a control quantity.			
	<b>6411</b>	<b>Measurement unit code</b>	<b>C</b>	<b>an..8</b>	<b>X</b>



**Segment:** **UNT** Message Trailer  
**Position:** 00710  
**Group:**  
**Level:** 0  
**Usage:** Mandatory  
**Max Use:** 1  
**Purpose:** A service segment ending a message, giving the total number of segments in the message (including the UNH & UNT) and the control reference number of the message.

**Dependency Notes:****Semantic Notes:****Comments:**

**Notes:** Example: 26 sent segments, message envelope reference "1357924680"

UNT+26+1357924680'

**Data Element Summary**

<u>Data Element</u>	<u>Component Element</u>	<u>Name</u>	<u>Base Attributes</u>			<u>User Attributes</u>
0074		NUMBER OF SEGMENTS IN A MESSAGE	M	1	n..6	M
		Control count of number of segments in a message.				
0062		MESSAGE REFERENCE NUMBER	M	1	an..14	M
		Unique message reference assigned by the sender.				