

COPRAR Container Discharge/Loading Order Message

Introduction:

A message to order to the container terminal that the containers specified have to be discharged from a seagoing vessel or have to be loaded into a seagoing vessel.

This message is part of a total set of container-related messages. These messages serve to facilitate the intermodal handling of containers by streamlining the information exchange. The business scenario for the container messages is clarified in a separate document, called: 'Guide to the scenario of EDIFACT container messages'.

Notes:

This Message Implementation Guideline (MIG) has been developed by JUL Project Team, in the context of the JUL Portuguese Project (www.projeto-jul.pt).

In this context, the following items are considered. The document provides the definition of the Cargo Loading/Discharge report message to be used in electronic data interchange with Port Terminals, cargo operators or their representatives, related with cargo movements in Portuguese ports.

Due to the existence of current implementations of this message in some Portuguese ports, the document signals where backward compatibility is relevant. However, new or updated implementations must follow this MIG and shall ignore these specific exceptions.

Additionally to the UN/EDIFACT definition and scope, this MIG is used also applied to general cargo.

This MIG provides guidance as to the recommended usage of codes, qualifiers, data elements, composites, segments and groups of segments in the D.16A COPRAR. The intention is to assist developers to ensure consistent use of the COPRAR message throughout the worldwide trade and transport community.

The MIG was elaborated considering the following references:

- UN/EDIFACT D.16A COPRAR
- UN/EDIFACT D.16A Data Element Codes
- ISO 6346, 2nd and 3rd editions, and amendments – Freight containers – Coding, identification and marking
- UN/ECE Recommendation 7 – Numerical Representation of Dates, Time, and Periods of Time
- UN/ECE Recommendation 16 (3rd edition) – UN/LOCODE – Codes for Ports and Other Locations
- UN/ECE Recommendation 19 (2nd edition) – Codes for Modes of Transport
- UN/ECE Recommendation 20 – Codes for Units of Measure Used in International Trade
- ITIGG: General Recommendations Version 2.1 March 2001
- SMDG MIG COPRAR Version 2.1-3

Being based on SMDG MIG does not mean a full adoption of SMDG proposals. In some situations, groups, segments, elements or codes are not applicable. In other situations, groups, segments, elements or codes are

included but notes are present to inform the purpose of SMDG proposal compability. Notes on this matter will be in font Courier New 8pt Bold.

Usage indicators in this MIG follow ITIGG Recommendation D4/G44.

Status Indicators (“M” and “C”) form part of the UN/EDIFACT standard and indicate a minimum requirement to fulfil the needs of the message structure. They are not adequate for implementation purposes. The Status Indicators are:

Value Description

M Mandatory

The entity marked as such must appear in all messages, and apply to these messages as well as to any associated implementation guidelines (and consequently is also a Usage Indicator).

C Conditional

The entity is used by agreement between trading partners.

Usage Indicators are implementation related indicators that further detail the use of “Conditional” Status Indicators. Usage Indicators are applied at all levels of the guidelines and shown adjacent to data items such as segment groups, segments, composite data elements and simple data elements. They dictate the agreed usage of the data items or entities. The Usage Indicators are:

Value Description

M Mandatory

Indicates the item is mandatory in the UN/EDIFACT message.

R Required

Indicates the item must be transmitted in this implementation.

D Dependent

Indicates that the use of the item is depending on a well-defined condition or set of conditions. These conditions must be clearly specified in the relevant implementation guideline.

O Optional

Indicates that this item is at the need or discretion of both trading partners.

X Not Used

Indicates that this item is not to be used in this implementation.

Where an item within a segment group, segment or composite data element is marked with Usage Indicators “M” or “R”, but the segment group, segment or composite data element has been marked “O” or “D” (or for that matter “X”), the item is only to be transmitted when the segment group, segment or composite of which it is a part, is used.

Examples in the text are just related with the segments where they appear. They are not necessarily related between each other.

*** Special Note On General Cargo

The COPRAR message was not designed to report loading/discharge of general cargo. For this reason, this MIG defines a segments' and elements' usage that supports a mechanism to represent general cargo movements. This is described in SG6(EQD) notes.

*** Special Note On Local Usage

Due to the diverse realities of the Portuguese ports and the stakeholders operating in them, it is necessary to define local rules, codes, etc. But this needs to be done considering the harmonization framework that this document defines.

In order to avoid a heavy guideline where all local port specifics are expressed, the approach is to redirect the reader to an external document when applicable. The external document should be elaborated by each port when justified.

However all stakeholders should have the following in mind. The local specifications are complementary to this document. They are used to document current implementations, and should not be a justification for new or updated implementations to avoid the full adoption of this document.

Due to the requirement of Terminal Operators in the role of Customs Depositary, to report equipment of transport or general cargo movements into/from vessels to Customs Summary Declaration System using electronic messages, this Message Implementation Guideline will refer to the elements of the message to be sent to Customs, related directly or indirectly with EDIFACT elements.

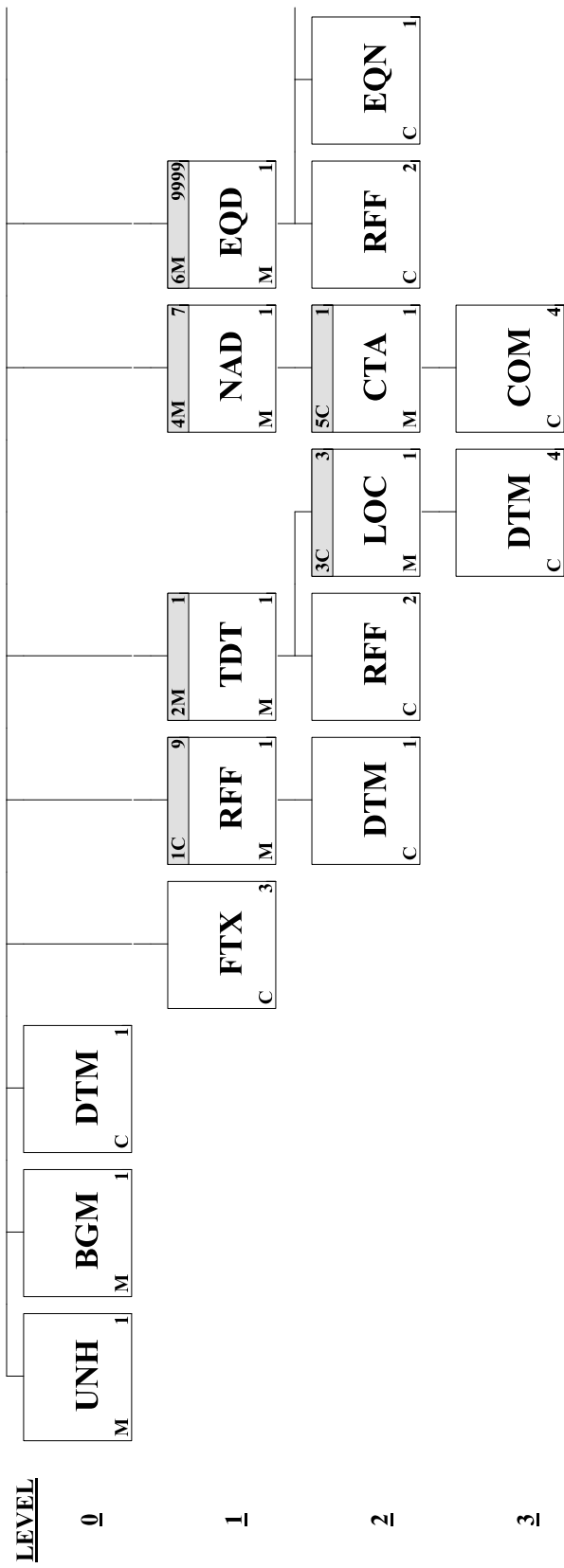
In the context of COPRAR the messages to Customs are known by SeaWarehouseKeeperContainersReport and SeaWarehouseKeeperCargoReport.

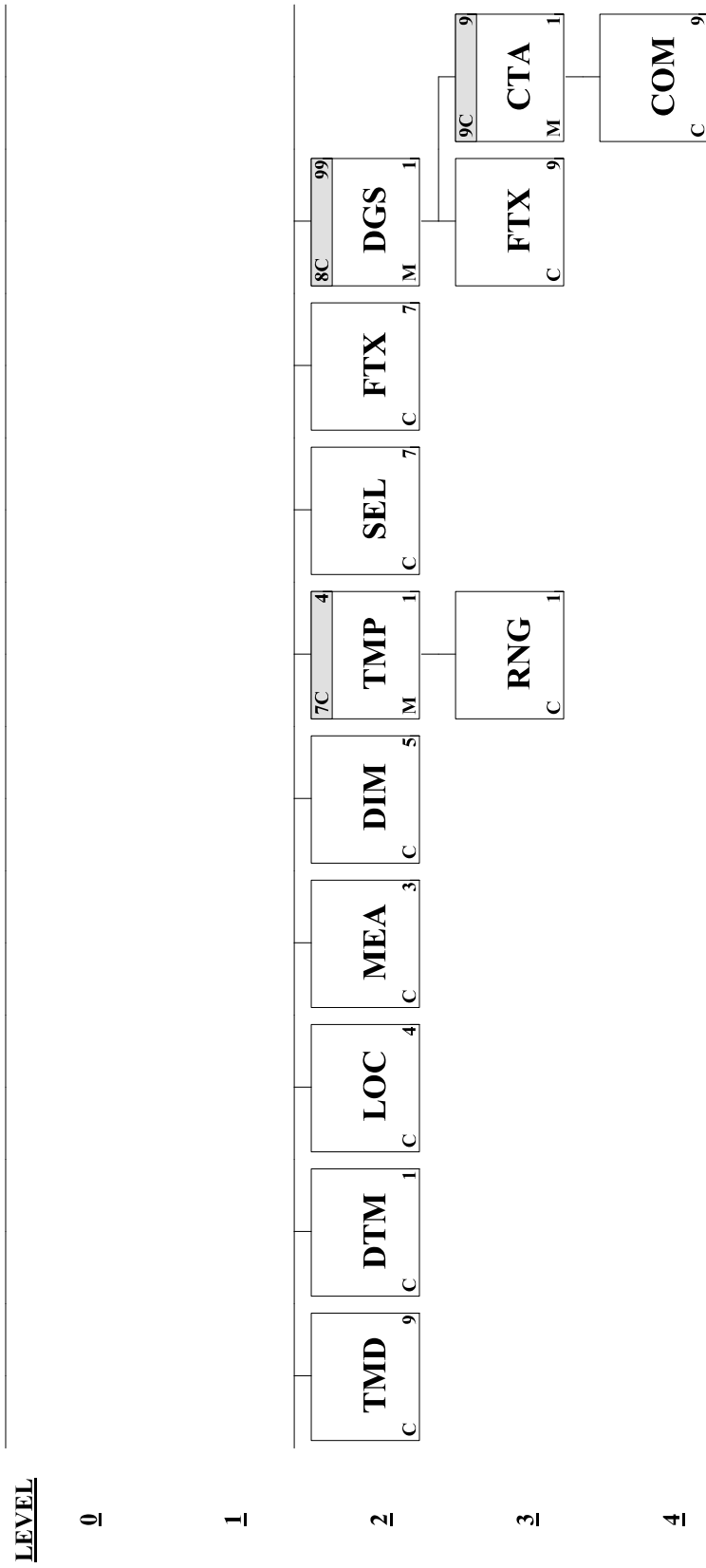
Most of the elements in the above mentioned messages are common to both. When an element is specific to just one of them, that will be mentioned.

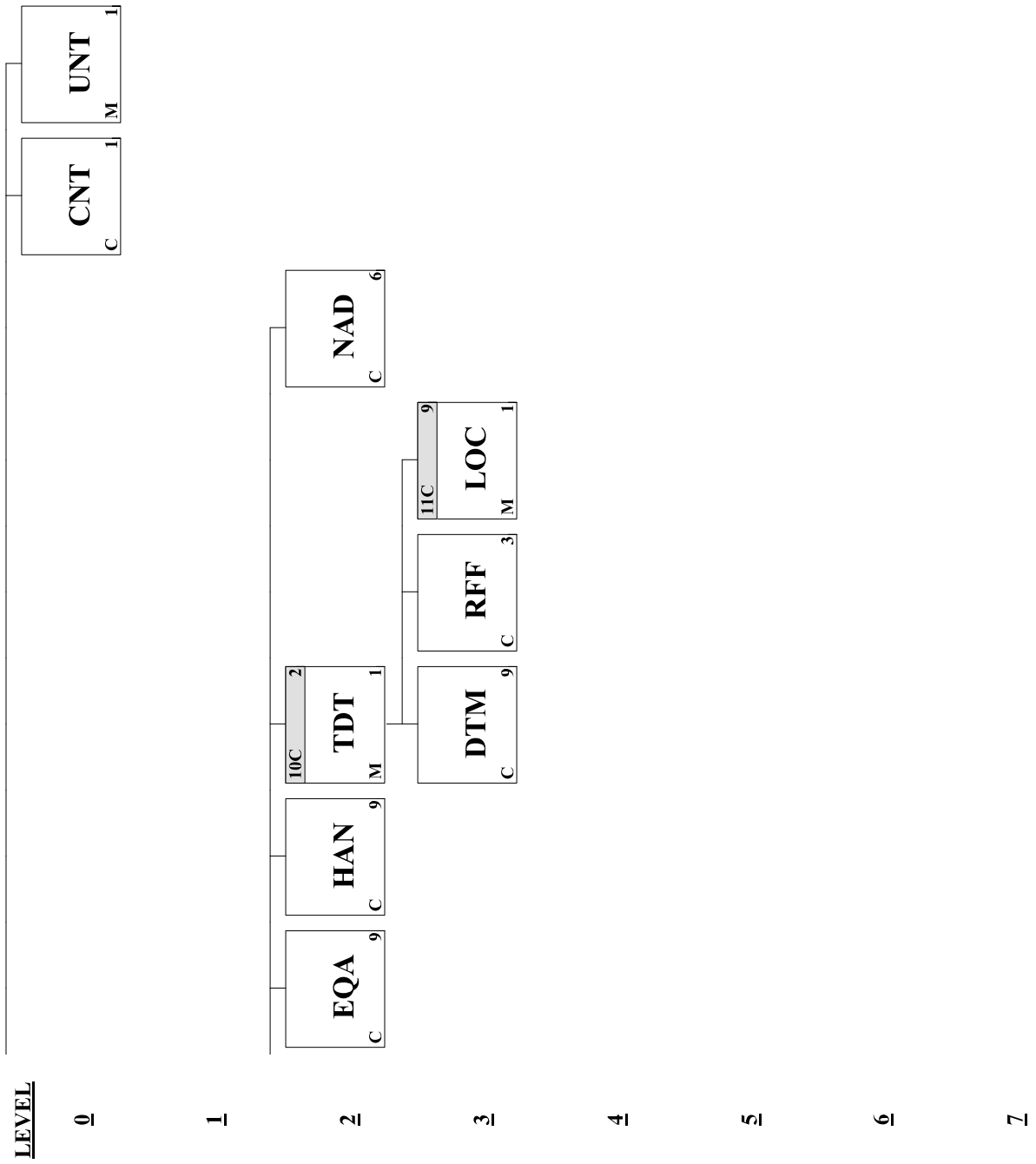
The notes on this matter will be in italic.

| <u>Page No.</u> | <u>Pos. No.</u> | <u>Seg. ID</u> | <u>Name</u> | <u>Base Guide</u> | <u>User Status</u> | <u>Max.Use</u> | <u>Group Repeat</u> | <u>Notes and Comments</u> |
|-----------------|-----------------|----------------|-------------------------------|-------------------|--------------------|----------------|---------------------|---------------------------|
| 8 | 00010 | UNH | Message Header | M | M | 1 | | |
| 10 | 00020 | BGM | Beginning of Message | M | M | 1 | | |
| 12 | 00030 | DTM | Date/Time/Period | C | O | 1 | | |
| 13 | 00040 | FTX | Free Text | C | O | 3 | | |
| | 00050 | | Segment Group 1: RFF-DTM | C | R | | 9 | |
| 16 | 00060 | RFF | Reference | M | M | 1 | | |
| 18 | 00070 | DTM | Date/Time/Period | C | O | 1 | | |
| | 00080 | | Segment Group 2: TDT-RFF-SG3 | M | M | | 1 | |
| 20 | 00090 | TDT | Transport Information | M | M | 1 | | |
| 23 | 00110 | RFF | Reference | C | O | 2 | | |
| | 00120 | | Segment Group 3: LOC-DTM | C | O | | 3 | |
| 26 | 00130 | LOC | Place/Location Identification | M | M | 1 | | |
| 29 | 00140 | DTM | Date/Time/Period | C | O | 4 | | |
| | 00160 | | Segment Group 4: NAD-SG5 | M | M | | 7 | |

| | | | | | | |
|----|-------|-----|---|---|---|------|
| 31 | 00170 | NAD | Name and Address | M | M | 1 |
| | 00180 | | Segment Group 5: CTA-COM | C | O | 1 |
| 35 | 00190 | CTA | Contact Information | M | M | 1 |
| 36 | 00200 | COM | Communication Contact | C | R | 4 |
| | 00210 | | Segment Group 6: EQD-RFF-EQN-TMD -DTM-LOC-MEA-DIM-SG7-SEL-FTX -SG8-EQA-HAN-SG10-NAD | M | M | 9999 |
| 40 | 00220 | EQD | Equipment Details | M | M | 1 |
| 44 | 00230 | RFF | Reference | C | O | 2 |
| 48 | 00240 | EQN | Number of Units | C | O | 1 |
| 49 | 00250 | TMD | Transport Movement Details | C | O | 9 |
| 50 | 00260 | DTM | Date/Time/Period | C | O | 1 |
| 52 | 00270 | LOC | Place/Location Identification | C | R | 4 |
| 56 | 00280 | MEA | Measurements | C | R | 3 |
| 59 | 00290 | DIM | Dimensions | C | O | 5 |
| | 00300 | | Segment Group 7: TMP-RNG | C | D | 4 |
| 62 | 00310 | TMP | Temperature | M | M | 1 |
| 63 | 00320 | RNG | Range Details | C | O | 1 |
| 64 | 00330 | SEL | Seal Number | C | D | 7 |
| 66 | 00340 | FTX | Free Text | C | O | 7 |
| | 00360 | | Segment Group 8: DGS-FTX-SG9 | C | O | 99 |
| 71 | 00370 | DGS | Dangerous Goods | M | M | 1 |
| 74 | 00380 | FTX | Free Text | C | O | 9 |
| | 00400 | | Segment Group 9: CTA-COM | C | O | 9 |
| 76 | 00410 | CTA | Contact Information | M | M | 1 |
| 77 | 00420 | COM | Communication Contact | C | O | 9 |
| 78 | 00430 | EQA | Attached Equipment | C | O | 9 |
| 79 | 00440 | HAN | Handling Instructions | C | O | 9 |
| | 00450 | | Segment Group 10: TDT-DTM-RFF -SG11 | C | O | 2 |
| 83 | 00460 | TDT | Transport Information | M | M | 1 |
| 87 | 00470 | DTM | Date/Time/Period | C | O | 9 |
| 88 | 00480 | RFF | Reference | C | O | 3 |
| | 00490 | | Segment Group 11: LOC | C | O | 9 |
| 91 | 00500 | LOC | Place/Location Identification | M | M | 1 |
| 93 | 00520 | NAD | Name and Address | C | O | 6 |
| 98 | 00530 | CNT | Control Total | C | O | 1 |
| 99 | 00540 | UNT | Message Trailer | M | M | 1 |







Segment: **UNH** Message Header
Position: 00010
Group:
Level: 0
Usage: Mandatory
Max Use: 1
Purpose: A service segment starting and uniquely identifying a message. The message type code for the Container discharge/loading order message is COPRAR.
 Note: Container discharge/loading order messages conforming to this document must contain the following data in segment UNH, composite S009:
 Data element 0065 COPRAR 0052 D 0054 16A 0051
 UN

Dependency Notes:**Semantic Notes:****Comments:**

Notes: Example: Message envelope number "1357924680", type "COPRAR", UN/Edifact directory "D16A"

UNH+1357924680+COPRAR:D:16A:UN'

Data Element Summary

| <u>Data Element</u> | <u>Component Element</u> | <u>Name</u> | <u>Base Attributes</u> | | <u>User Attributes</u> |
|---------------------|--------------------------|---|------------------------|----------|------------------------|
| 0062 | | MESSAGE REFERENCE NUMBER | M | 1 an..14 | M |
| | | Unique message reference assigned by the sender. | | | |
| S009 | | MESSAGE IDENTIFIER | M | 1 | M |
| | | Identification of the type, version etc. of the message being interchanged. | | | |
| | 0065 | Message type identifier | M | an..6 | M |
| | | Code identifying a type of message and assigned by its controlling agency. | | | |
| | | COPRAR Container discharge/loading order message | | | |
| | 0052 | Message type version number | M | an..3 | M |
| | | Version number of a message type. | | | |
| | | D Draft version/UN/EDIFACT Directory | | | |
| | 0054 | Message type release number | M | an..3 | M |
| | | Release number within the current message type version number (0052). | | | |
| | | 16A Release 2016 - A | | | |
| | | 95B Release 1995 - B | | | |
| | | Only for backward compatibility. | | | |
| | 0051 | Controlling agency | M | an..2 | M |
| | | Code identifying the agency controlling the specification, maintenance and publication of the message type. | | | |
| | | UN UN/CEFACT | | | |
| | 0057 | Association assigned code | C | an..6 | O |
| | | Code, assigned by the association responsible for the design and maintenance of the | | | |

message type concerned, which further identifies the message.

Only for compatibility with SMDG proposal. It will not be processed by JUL system.

| | | | | | |
|-------------|---|----------|----------|---------------|----------|
| 0068 | COMMON ACCESS REFERENCE | C | 1 | an..35 | O |
| | Reference serving as a key to relate all subsequent transfers of data to the same business case or file. | | | | |
| | Only for compatibility with SMDG proposal. It will not be processed by JUL system. | | | | |
| S010 | STATUS OF THE TRANSFER | C | 1 | | X |
| | Statement that the message is one in a sequence of transfers relating to the same topic. | | | | |
| 0070 | Sequence message transfer number | M | | n..2 | X |
| | Number assigned by the sender indicating that the message is an addition or change of a previously sent message relating to the same topic. | | | | |
| 0073 | First/last sequence message transfer indication | C | | a1 | X |
| | Indication used for the first and last message in a sequence of the same type of message relating to the same topic. | | | | |

Segment: **BGM** Beginning of Message
Position: 00020
Group:
Level: 0
Usage: Mandatory
Max Use: 1
Purpose: A segment to indicate the beginning of a message and to transmit identifying number and the further specification of the message type (in data element 1001: Document name code), such as Loading order, Discharge order.

Dependency Notes:**Semantic Notes:****Comments:**

Notes: Example: Transport loading instruction message LI7544097, original.

BGM+121+LI75440947+9'

Data Element Summary

| <u>Data Element</u> | <u>Component Element</u> | <u>Name</u> | <u>Base Attributes</u> | | <u>User Attributes</u> | |
|---------------------|---|--|---|--------|------------------------|--|
| C002 | | DOCUMENT/MESSAGE NAME | C | 1 | R | |
| | | Identification of a type of document/message by code or name. Code preferred. | | | | |
| | 1001 | Document name code | C | an..3 | R | |
| | | Code specifying the document name. | | | | |
| | | 43 | Season ticket | | | |
| | | | Only for backward compability. It will be treated like '118'. | | | |
| | | 45 | Transport status request | | | |
| | | | Only for backward compability. It will be treated like '121'. | | | |
| | | 118 | Transport discharge instruction | | | |
| | | 121 | Transport loading instruction | | | |
| C106 | 1131 | Code list identification code | C | an..17 | X | |
| | 3055 | Code list responsible agency code | C | an..3 | X | |
| | 1000 | Document name | C | an..35 | X | |
| | | DOCUMENT/MESSAGE IDENTIFICATION | C | 1 | R | |
| | | Identification of a document/message by its number and eventually its version or revision. | | | | |
| | 1004 | Document identifier | C | an..70 | R | |
| | To identify a document. | | | | | |
| | Identification of the message. Not of the document. | | | | | |

The value will be used in "Message Identification" element.

| | | | | | |
|-------------|-------------|------------------------------|----------|----------------|----------|
| | 1056 | Version identifier | C | an..9 | X |
| | 1060 | Revision identifier | C | an..6 | X |
| 1225 | | MESSAGE FUNCTION CODE | C | 1 an..3 | R |

Code indicating the function of the message.

If not expressed in SG6:FTX:C108:4440 (1st occurrence) when SG6:FTX:4451 = 'WHI', the value in this element will be used to infer the value to put in the "Action" element inside the "Item" element, according to the correspondance in the below list.

| | |
|----|----------------------------|
| 1 | Cancellation |
| | <i>Use "Remove".</i> |
| 2 | Addition |
| | <i>Use value "Create".</i> |
| 3 | Deletion |
| | <i>Use value "Remove".</i> |
| 4 | Change |
| | <i>Use value "Update".</i> |
| 5 | Replace |
| 9 | Original |
| | <i>Use value "Create".</i> |
| 22 | Final transmission |

Usage complemented in local document if mentioned in that document.

| | | | | |
|-------------|---------------------------|----------|----------------|----------|
| 4343 | RESPONSE TYPE CODE | C | 1 an..3 | O |
|-------------|---------------------------|----------|----------------|----------|

Code specifying the type of acknowledgment required or transmitted.

Usage complemented in local document if mentioned in that document.

| | |
|----|-------------------------|
| AB | Message acknowledgement |
|----|-------------------------|

| | | | | |
|-------------|-----------------------------|----------|----------------|----------|
| 1373 | DOCUMENT STATUS CODE | C | 1 an..3 | X |
| 3453 | LANGUAGE NAME CODE | C | 1 an..3 | X |

Segment: **DTM** Date/Time/Period
Position: 00030
Group:
Level: 0
Usage: Conditional (Optional)
Max Use: 1
Purpose: A segment to indicate a date and/or time applying to the whole message, such as date and time of document or message issue.

Dependency Notes:**Semantic Notes:****Comments:**

Notes: Usage complemented in local document if mentioned in that document.

The usage of this segment is to provide the date/time at which the sender creates the message. In this case DE:2005 will be '137'.

Example: Message issued on 2002/02/01 at 14:21

DTM+137:200202011421:203'

Data Element Summary

| <u>Data Element</u> | <u>Component Element</u> | <u>Name</u> | <u>Base Attributes</u> | | <u>User Attributes</u> |
|---------------------|--------------------------|--|------------------------|--------|------------------------|
| C507 | | DATE/TIME/PERIOD | M | 1 | M |
| | | Date and/or time, or period relevant to the specified date/time/period type. | | | |
| | 2005 | Date or time or period function code qualifier | M | an..3 | M |
| | | Code qualifying the function of a date, time or period. | | | |
| | | 137 Document issue date time | | | |
| | 2380 | Date or time or period text | C | an..35 | R |
| | | The value of a date, a date and time, a time or of a period in a specified representation. | | | |
| | | <i>The value will be used in "Message Date" element.</i> | | | |
| | 2379 | Date or time or period format code | C | an..3 | R |
| | | Code specifying the representation of a date, time or period. | | | |
| | | 203 CCYYMMDDHHMM | | | |

Segment: **FTX** Free Text
Position: 00040
Group:
Level: 1
Usage: Conditional (Optional)
Max Use: 3
Purpose: A segment to specify free form or processable supplementary information, such as:
- change information

Dependency Notes:**Semantic Notes:****Comments:**

Notes: Usage complemented in local document if mentioned in that document.

Example: Priority transport equipment

FTX+AAI+++PRIORITY TRANSPORT EQUIPMENT'

Data Element Summary

| <u>Data Element</u> | <u>Component Element</u> | <u>Name</u> | <u>Base Attributes</u> | | | <u>User Attributes</u> |
|---------------------|--------------------------|--|------------------------|---|---------|------------------------|
| 4451 | | TEXT SUBJECT CODE QUALIFIER | M | 1 | an..3 | M |
| | | Code qualifying the subject of the text. | | | | |
| | | AAI General information | | | | |
| | | CHG Change information | | | | |
| | | To be sent if the BGM:1225 <> '9'. | | | | |
| | | HAN Consignment handling instruction | | | | |
| 4453 | | FREE TEXT FUNCTION CODE | C | 1 | an..3 | X |
| C107 | | TEXT REFERENCE | C | 1 | | X |
| | | Coded reference to a standard text and its source. | | | | |
| | 4441 | Free text description code | M | | an..17 | X |
| | | Code specifying free form text. | | | | |
| | 1131 | Code list identification code | C | | an..17 | X |
| | | Code identifying a user or association maintained code list. | | | | |
| | 3055 | Code list responsible agency code | C | | an..3 | X |
| | | Code specifying the agency responsible for a code list. | | | | |
| C108 | | TEXT LITERAL | C | 1 | | R |
| | | Free text; one to five lines. | | | | |
| | 4440 | Free text | M | | an..512 | M |
| | | Free form text. | | | | |
| | 4440 | Free text | C | | an..512 | O |
| | | Free form text. | | | | |
| | 4440 | Free text | C | | an..512 | O |

| | | | | | |
|-------------|------------------------------|----------|----------------|----------|--|
| | Free form text. | | | | |
| 4440 | Free text | C | an..512 | O | |
| | Free form text. | | | | |
| 4440 | Free text | C | an..512 | O | |
| | Free form text. | | | | |
| 3453 | LANGUAGE NAME CODE | C | 1 an..3 | X | |
| 4447 | FREE TEXT FORMAT CODE | C | 1 an..3 | X | |

| | |
|------------------|--|
| Group: | RFF Segment Group 1: Reference |
| Position: | 00050 |
| Group: | |
| Level: | 1 |
| Usage: | Conditional (Required) |
| Max Use: | 9 |
| Purpose: | A group of segments to specify a reference relating to the whole message, and its date and/or time. |
| Notes: | Usage complemented in local document if mentioned in that document. |
| | This group has two alternative functions. |
| | If the message reflects a new document, it means it has the function "Original", and the group identifies the document that is being sent. |
| | In all other cases, it shall be used to reference a previously issued message of the document at stake. |
| | When referring to previous messages, the methodology follows ITIGG's JM4/208 recommendation as stated in document JM4/ITIGG/96.101/v.131, with the exception of the inclusion of date information. |
| | For referenced message identification, segments RFF and DTM (when present) of this group will be used. |
| | Both situations can be present in the message simultaneously when the message is not "Original". |

Segment Summary

| | Pos. | Seg. | | Req. | Max. | Group: |
|---|-------------|-------------|------------------|-------------|-------------|---------------|
| | No. | ID | Name | Des. | Use | Repeat |
| M | 00060 | RFF | Reference | M | 1 | |
| O | 00070 | DTM | Date/Time/Period | C | 1 | |

Segment: **RFF** Reference
Position: 00060 (Trigger Segment)
Group: Segment Group 1 (Reference) Conditional (Required)
Level: 1
Usage: Mandatory
Max Use: 1
Purpose: A segment to express a reference which applies to the entire message, such as: - container discharge/loading order reference - reference to previous message

Dependency Notes:**Semantic Notes:****Comments:**

Notes: Example: Document identification MKC503678.

RFF+DM:MKC503678'

Example: Reference to a previous messages identified by DO50938803.

RFF+ACW:DO50938803'

Data Element Summary

| <u>Data Element</u> | <u>Component Element</u> | <u>Name</u> | <u>Base Attributes</u> | | <u>User Attributes</u> |
|---------------------|--------------------------|--|------------------------|-------|------------------------|
| C506 | | REFERENCE | M | 1 | M |
| | | Identification of a reference. | | | |
| | 1153 | Reference code qualifier | M | an..3 | M |
| | | Code qualifying a reference. | | | |
| | AA Y | Carrier's agent reference number Only for compatibility with SMDG proposal. It will be ignored by the JUL system. | | | |
| | ACA | Cargo acceptance order reference number Only for compatibility with SMDG proposal. It will be ignored by the JUL system. | | | |
| | ACW | Reference number to previous message Use when BGM:1225 <> '9'. | | | |
| | AKA | Container disposition order reference number Only for compatibility with SMDG proposal. It will be processed like 'CV'. | | | |
| | ARJ | Personal identity card number Only for compatibility with SMDG proposal. It will be ignored by the JUL system. | | | |
| | ATX | Transport equipment acceptance order reference Only for compatibility with SMDG proposal. It will be ignored by the JUL system. | | | |
| | ATY | Transport equipment release order reference Only for compatibility with SMDG proposal. It will be ignored by the JUL system. | | | |

| | | | | | |
|-------------|---------------------------------|--|----------|---------------|----------|
| | BM | Bill of lading number | | | |
| | BN | Consignment identifier, carrier assigned Also known as booking number. | | | |
| | CN | Carrier's reference number Only for compatibility with SMDG proposal. It will not be processed by JUL system. | | | |
| | DM | Document identifier | | | |
| | RE | Release number Only for compatibility with SMDG proposal. | | | |
| | XXX | Dummy value Usage complemented in local document if mentioned in that document. | | | |
| | Z01 | Queue Usage complemented in local document if mentioned in that document. | | | |
| | Z02 | Logistics Service Reference Usage complemented in local document if mentioned in that document. | | | |
| 1154 | Reference identifier | | C | an..70 | O |
| | | Identifies a reference. If DE:1153 = 'ACW' then send the identification of the previous message (value in BGM:1004 of the previous message) of this document. | | | |
| 1156 | Document line identifier | | C | an..6 | X |
| 1056 | Version identifier | | C | an..9 | X |
| 1060 | Revision identifier | | C | an..6 | X |

Segment: **DTM** Date/Time/Period
Position: 00070
Group: Segment Group 1 (Reference) Conditional (Required)
Level: 2
Usage: Conditional (Optional)
Max Use: 1
Purpose: A segment to indicate date and/or time related to the reference.

Dependency Notes:**Semantic Notes:****Comments:**

Notes: Usage complemented in local document if mentioned in that document.

The complete meaning of this date depends of the type of reference in the previous RFF segment, stated in RFF:C506:1153 data element.

Example: Date/time of the reference: "2003/10/08 - 10:15"

DTM+171:200310081015:203'

Data Element Summary

| <u>Data Element</u> | <u>Component Element</u> | <u>Name</u> | <u>Base Attributes</u> | | <u>User Attributes</u> |
|---------------------|--------------------------|--|------------------------|--------|------------------------|
| C507 | | DATE/TIME/PERIOD | M | 1 | M |
| | | Date and/or time, or period relevant to the specified date/time/period type. | | | |
| | 2005 | Date or time or period function code qualifier | M | an..3 | M |
| | | Code qualifying the function of a date, time or period. | | | |
| | | 171 Reference date/time | | | |
| | 2380 | Date or time or period text | C | an..35 | R |
| | | The value of a date, a date and time, a time or of a period in a specified representation. | | | |
| | 2379 | Date or time or period format code | C | an..3 | R |
| | | Code specifying the representation of a date, time or period. | | | |
| | | 203 CCYYMMDDHHMM | | | |

Group: **TDT** Segment Group 2: Transport Information
Position: 00080
Group:
Level: 1
Usage: Mandatory
Max Use: 1
Purpose: A group of segments to indicate the main carriage means of transport.

Notes: In the context of this message, discharge/loading instructions of transport equipment or general cargo shipments are related with seagoing vessels, and they are to be fulfill during the call of a particular vessel.

On situations where a Port Community System (PCS) is in place and contains vessel call information gathered and identified by a vessel call identification (also known as visit id), then these messages are supposed not to contain any information regarding vessels.

The connection between these reports and the vessel call is made by referring the PCS vessel call identification (visit id) in the RFF segment included in this group.

The vessel call must had been previously declared/opened in the PCS system, and will be matched with Customs Process Id (Contramarca).

However, if the message sender does not have visit id in its system, it must use additional data about the vessel and the call, to allow the correct matching between the message and the vessel call. This scenario is highly not advised.

The visit id that will be determined from the data in these groups will be used to infer from the PCS, the Contramarca value to be used in "Customs Reference Number" element.

Segment Summary

| | Pos. | Seg. | | Req. | Max. | Group: |
|---|-------------------|------------------|--|--------------------|-------------------|----------------------|
| | <u>No.</u> | <u>ID</u> | <u>Name</u> | <u>Des.</u> | <u>Use</u> | <u>Repeat</u> |
| M | 00090 | TDT | Transport Information | M | 1 | |
| O | 00110 | RFF | Reference | C | 2 | |
| | 00120 | | Segment Group 3: Place/Location Identification | C | | 3 |

Segment: **TDT** **Transport Information**
Position: 00090 (Trigger Segment)
Group: Segment Group 2 (Transport Information) Mandatory
Level: 1
Usage: Mandatory
Max Use: 1
Purpose: A segment identifying the voyage of the vessel relevant to the message (main transport).

Dependency Notes:**Semantic Notes:****Comments:**

Notes: Usage complemented in local document if mentioned in that document.

Example: Main carriage transport, maritime, voyage number 0220, shipping company is Maersk, vessel SL PRIDE with IMO 8212661.

TDT+20+0220+1+++MAE:172:20:MAERSK+++8212661:146:11:SL PRIDE'

Data Element Summary

| <u>Data Element</u> | <u>Component Element</u> | <u>Name</u> | <u>Base Attributes</u> | | | <u>User Attributes</u> |
|---------------------|--------------------------|--|------------------------|---|--------|------------------------|
| 8051 | | TRANSPORT STAGE CODE QUALIFIER Code qualifying a specific stage of transport. 20 Main-carriage transport | M | 1 | an..3 | M |
| 8028 | | MEANS OF TRANSPORT JOURNEY IDENTIFIER To identify a journey of a means of transport. Usage complemented in local document if mentioned in that document. Vessel operator's voyage number. Either this element or SG2:RFF can be used to specify a voyage number, or none of them are needed in case there is an occurrence of SG2:RFF referring the visit id. | C | 1 | an..17 | O |
| C220 | | MODE OF TRANSPORT Method of transport code or name. Code preferred. | C | 1 | | R |
| | 8067 | Transport mode name code Code specifying the name of a mode of transport. UN Recommendation 19 - Code for Modes of Transport. 1 Maritime | C | | an..3 | R |
| | 8066 | Transport mode name | C | | an..17 | X |
| C001 | | TRANSPORT MEANS Code and/or name identifying the type of means of transport. Only for compatibility with SMDG proposal. It will not be processed by JUL system. | C | 1 | | O |
| | 8179 | Transport means description code | C | | an..8 | O |

| | | | | | |
|-------------|-------------|---|----------|----------------|----------|
| | | Code specifying the means of transport. | | | |
| | | UN Recommendation 28 - Code for Types of Means of Transport. | | | |
| | 1131 | Code list identification code | C | an..17 | X |
| | 3055 | Code list responsible agency code | C | an..3 | X |
| | 8178 | Transport means description | C | an..17 | O |
| | | Free form description of the means of transport. | | | |
| C040 | | CARRIER | C | 1 | O |
| | | Identification of a carrier by code and/or by name. Code preferred. | | | |
| | | Usage complemented in local document if mentioned in that document. | | | |
| | | SMDG proposal states that this element is Required. However, it seems that this is tightly connected to the user attribute of element 3127. | | | |
| | | An alternative perspective is in this MIG. This element should be Optional and occurs if either 3127 or 3126, or both, occur. | | | |
| | 3127 | Carrier identifier | C | an..17 | R |
| | | To identify a carrier. | | | |
| | | Vessel operator's code. | | | |
| | 1131 | Code list identification code | C | an..17 | O |
| | | Code identifying a user or association maintained code list. | | | |
| | | Only for compatibility with SMDG proposal. It will not be processed by JUL system. | | | |
| | | 172 | Carriers | | |
| | 3055 | Code list responsible agency code | C | an..3 | X |
| | 3126 | Carrier name | C | an..35 | O |
| | | Name of a carrier. | | | |
| | | Usage complemented in local document if mentioned in that document. | | | |
| 8101 | | TRANSIT DIRECTION INDICATOR CODE | C | 1 an..3 | X |
| C401 | | EXCESS TRANSPORTATION INFORMATION | C | 1 | X |
| | | To provide details of reason for, and responsibility for, use of transportation other than normally utilized. | | | |
| | 8457 | Excess transportation reason code | M | an..3 | X |
| | | Code specifying the reason for excess transportation. | | | |
| | 8459 | Excess transportation responsibility code | M | an..3 | X |
| | | Code specifying the responsibility for excess transportation. | | | |
| | 7130 | Customer shipment authorisation identifier | C | an..17 | X |
| | | To identify the authorisation to ship issued by the customer. | | | |
| C222 | | TRANSPORT IDENTIFICATION | C | 1 | O |
| | | Code and/or name identifying the means of transport. | | | |
| | | Usage complemented in local document if mentioned in that document. | | | |
| | | SMDG proposal states that this element is Dependent. However, it seems that this is tightly connect to the user attribute of element 8213. | | | |
| | | An alternative perspective is in this MIG. This element should be | | | |

| Optional and occurs if either 8213 or 8212, or both, occur. | | | | | |
|---|--|---|----------------|----------|--|
| 8213 | Transport means identification name identifier | C | an..35 | O | |
| | Identifies the name of the transport means. | | | | |
| | Identification of the means of transport by number. | | | | |
| | Either this element or SG2:RFF must be used to specify a vessel identification, or none of them are needed in case there is an occurrence of SG2:RFF referring the visit id. | | | | |
| 1131 | Code list identification code | C | an..17 | O | |
| | Code identifying a user or association maintained code list. | | | | |
| | 146 | Means of transport identification | | | |
| 3055 | Code list responsible agency code | C | an..3 | O | |
| | Code specifying the agency responsible for a code list. | | | | |
| | 11 | Lloyd's register of shipping | | | |
| | | Usage complemented in local document if mentioned in that document. | | | |
| | 54 | IMO (International Maritime Organisation) | | | |
| 8212 | Transport means identification name | C | an..70 | O | |
| | Name identifying a means of transport. | | | | |
| 8453 | Transport means nationality code | C | an..3 | O | |
| | Code specifying the nationality of a means of transport. | | | | |
| | Flag of Means of Transport (ISO country code, 2-alpha). | | | | |
| 8281 | TRANSPORT MEANS OWNERSHIP INDICATOR CODE | C | 1 an..3 | X | |
| C003 | POWER TYPE | C | 1 | X | |
| | To specify the type of power. | | | | |
| 7041 | Power type code | C | an..3 | X | |
| | Code indicating the type of power. | | | | |
| 1131 | Code list identification code | C | an..17 | X | |
| | Code identifying a user or association maintained code list. | | | | |
| 3055 | Code list responsible agency code | C | an..3 | X | |
| | Code specifying the agency responsible for a code list. | | | | |
| 7040 | Power type description | C | an..17 | X | |
| | Description of the type of power. | | | | |

Segment: **RFF** Reference
Position: 00110
Group: Segment Group 2 (Transport Information) Mandatory
Level: 2
Usage: Conditional (Optional)
Max Use: 2
Purpose: A segment identifying a relevant reference number, such as: - shipping -
 syndicate - marketing organization - conference code

Dependency Notes:**Semantic Notes:****Comments:**

Notes: Usage complemented in local document if mentioned in that document.

Although this segment is marked as optional, in the JUL implementation this is the preferred way to identify a visit id (vessel call). The usage is to put this id in DE:1154 associated with qualifier 'ATZ' in 1153. This identification is provided by the JUL system.

Example: Leixões visit id PTLEI118001032

RFF+ATZ:PTLEI118001032'

Example: Additional voyage number 7199

RFF+VON:7199'

Data Element Summary

| <u>Data Element</u> | <u>Component Element</u> | <u>Name</u> | <u>Base Attributes</u> | | <u>User Attributes</u> |
|---------------------|--------------------------|--|------------------------|---------------|------------------------|
| C506 | | REFERENCE | M | 1 | M |
| | | Identification of a reference. | | | |
| | 1153 | Reference code qualifier | M | an..3 | M |
| | | Code qualifying a reference. | | | |
| | | ATZ Ship's stay reference number Corresponding to the Visit Id. | | | |
| | | MA Ship notice/manifest number Only for compatibility with SMDG proposal. It will not be processed by JUL system. | | | |
| | | VM Vessel identifier Only for compatibility with SMDG proposal. It will not be processed by JUL system. | | | |
| | | VON Voyage number | | | |
| | 1154 | Reference identifier | C | an..70 | R |
| | | Identifies a reference. | | | |
| | | Visit id, if C506:1153 = 'ATZ'. | | | |

Alternative (non vessel operator's) voyage number (if C506:1153 = 'VON') as present in the Port Authority System.

| | | | | |
|-------------|---------------------------------|----------|--------------|----------|
| 1156 | Document line identifier | C | an..6 | X |
| 1056 | Version identifier | C | an..9 | X |
| 1060 | Revision identifier | C | an..6 | X |

Group: **LOC** Segment Group 3: Place/Location Identification

Position: 00120

Group: Segment Group 2 (Transport Information) Mandatory

Level: 2

Usage: Conditional (Optional)

Max Use: 3

Purpose: A group of segments to identify locations related to the means of transport.

Notes: This group is to be used when the visit id is not known by the message sender since the information provided will help to identify the correct vessel call.

To determine the visit id for this vessel call, the terminal/berth where the vessel is going to operate or it is currently operating, and ETA or ETD dates are used.

Segment Summary

| | Pos. | Seg. | | Req. | Max. | Group: |
|---|-------------------|------------------|-------------------------------|--------------------|-------------------|----------------------|
| | <u>No.</u> | <u>ID</u> | <u>Name</u> | <u>Des.</u> | <u>Use</u> | <u>Repeat</u> |
| M | 00130 | LOC | Place/Location Identification | M | 1 | |
| O | 00140 | DTM | Date/Time/Period | C | 4 | |

Segment: **LOC** **Place/Location Identification**
Position: 00130 (Trigger Segment)
Group: Segment Group 3 (Place/Location Identification) Conditional (Optional)
Level: 2
Usage: Mandatory
Max Use: 1
Purpose: A segment to identify a location related to the means of transport, such as: - place of departure/arrival (terminal within the port)

Dependency Notes:**Semantic Notes:****Comments:**

Notes: Example: Port of loading Leixoes, North Container Terminal

LOC+9+PTLEI:139:6+TCN'

Some usages stated in this MIG are for only for compatibility with SMDG proposal. It will not be processed by JUL system.

Data Element Summary

| <u>Data Element</u> | <u>Component Element</u> | <u>Name</u> | <u>Base Attributes</u> | | | <u>User Attributes</u> |
|---------------------|--------------------------|--|------------------------|---|---------|------------------------|
| 3227 | | LOCATION FUNCTION CODE QUALIFIER Code identifying the function of a location. 9 Place of loading 11 Place of discharge | M | 1 | an..3 | M |
| C517 | | LOCATION IDENTIFICATION Identification of a location by code or name. | C | 1 | | R |
| | 3225 | Location identifier To identify a location. UN/Locode. | C | | an..35 | R |
| | 1131 | Code list identification code Code identifying a user or association maintained code list. 139 Port | C | | an..17 | O |
| | 3055 | Code list responsible agency code Code specifying the agency responsible for a code list. 6 UN/ECE (United Nations - Economic Commission for Europe) | C | | an..3 | O |
| | 3224 | Location name Name of the location. Only for compatibility with SMDG proposal. It will not be processed by JUL system. | C | | an..256 | O |
| C519 | | RELATED LOCATION ONE IDENTIFICATION Identification the first related location by code or name. Usage complemented in local document. | C | 1 | | O |
| | 3223 | First related location identifier | C | | an..35 | O |

To identify a first related location.

Usage complemented in local document.

Use the codes for terminals/berths located in the port specified in DE:3225.

| | | | | |
|-------------|--|--|---------------|----------|
| 1131 | Code list identification code | C | an..17 | O |
| | Code identifying a user or association maintained code list. | | | |
| | Usage complemented in local document. | | | |
| | 72 | Container terminal | | |
| | | Only for compatibility with SMDG proposal. It will not be processed by JUL system. | | |
| | 266 | Marine berth | | |
| | | Only for compatibility with SMDG proposal. It will not be processed by JUL system. | | |
| | 267 | Marine wharf | | |
| | | Only for compatibility with SMDG proposal. It will not be processed by JUL system. | | |
| | ZZZ | Mutually defined | | |
| 3055 | Code list responsible agency code | C | an..3 | O |
| | Code specifying the agency responsible for a code list. | | | |
| | Usage complemented in local document. | | | |
| | 9 | GS1 | | |
| | | Only for compatibility with SMDG proposal. It will not be processed by JUL system. | | |
| | 184 | AU, ACOS (Australian Chamber of Shipping) | | |
| | | Only for compatibility with SMDG proposal. It will not be processed by JUL system. | | |
| | 306 | SMDG (Ship-planning Message Design Group) | | |
| | | Usage complemented in local document if mentioned in that document. | | |
| | SMD | SMDG (Shipplanning Message Development Group) | | |
| | | Only for compatibility with SMDG proposal. It will not be processed by JUL system. | | |
| | ZZZ | Mutually defined | | |
| 3222 | First related location name | C | an..70 | O |
| | Name of first related location. | | | |
| | Only for compatibility with SMDG proposal. It will not be processed by JUL system. | | | |
| C553 | RELATED LOCATION TWO IDENTIFICATION | C | 1 | O |
| | Identification of second related location by code or name. | | | |
| | Only for compatibility with SMDG proposal. It will not be processed by JUL system. | | | |
| 3233 | Second related location identifier | C | an..35 | O |
| | To identify a second related location. | | | |
| 1131 | Code list identification code | C | an..17 | O |

| | | | | |
|-------------|--|----------|----------------|----------|
| | Code identifying a user or association maintained code list. | | | |
| 3055 | Code list responsible agency code | C | an..3 | O |
| | Code specifying the agency responsible for a code list. | | | |
| | Refer to D.16A Data Element Dictionary for acceptable code values. | | | |
| 3232 | Second related location name | C | an..70 | O |
| | Name of the second related location. | | | |
| 5479 | RELATION CODE | C | 1 an..3 | X |

Segment: **DTM** Date/Time/Period
Position: 00140
Group: Segment Group 3 (Place/Location Identification) Conditional (Optional)
Level: 3
Usage: Conditional (Optional)
Max Use: 4
Purpose: A segment to specify date(s) and time(s) related to a location.
Dependency Notes:
Semantic Notes:
Comments:
Notes: Usage complemented in local document if mentioned in that document.

Example: Vessel estimated date/time of arrival was 2018/10/31 14:35

DTM+132:201810311435:203'

Data Element Summary

| <u>Data Element</u> | <u>Component Element</u> | <u>Name</u> | <u>Base Attributes</u> | | <u>User Attributes</u> |
|---------------------|--------------------------|--|------------------------|--------|------------------------|
| C507 | | DATE/TIME/PERIOD | M | 1 | M |
| | | Date and/or time, or period relevant to the specified date/time/period type. | | | |
| | 2005 | Date or time or period function code qualifier | M | an..3 | M |
| | | Code qualifying the function of a date, time or period. | | | |
| | | 132 Transport means arrival date time, estimated | | | |
| | | 133 Transport means departure date/time, estimated | | | |
| | | 178 Transport means arrival date time, actual | | | |
| | | <i>Only for compatibility with SMDG proposal. It will not be processed by JUL system.</i> | | | |
| | | 186 Transport means departure date/time, actual | | | |
| | | <i>Only for compatibility with SMDG proposal. It will not be processed by JUL system.</i> | | | |
| | 2380 | Date or time or period text | C | an..35 | R |
| | | The value of a date, a date and time, a time or of a period in a specified representation. | | | |
| | 2379 | Date or time or period format code | C | an..3 | R |
| | | Code specifying the representation of a date, time or period. | | | |
| | | 203 CCYYMMDDHHMM | | | |

Group: **NAD** Segment Group 4: Name and Address
Position: 00160
Group:
Level: 1
Usage: Mandatory
Max Use: 7
Purpose: A group of segments to identify a party and related contacts.
Notes: Usage complemented in local document if mentioned in that document.

This group is used to identify the entities related with the whole document. However, some of them may be stated at detail level (SG6). This will be signaled when needed.

It will be possible that the entity that sends the message, might not be the same that operates the terminal. It is advised this group to be sent twice, at least, in order to specify the message sender and the terminal operator.

Segment Group 5 given information related with the Contact Information is to be used only when NAD:3035 is 'TR'.

Segment Summary

| | Pos. | Seg. | | Req. | Max. | Group: |
|---|-------------------|------------------|--------------------------------------|--------------------|-------------------|----------------------|
| | <u>No.</u> | <u>ID</u> | <u>Name</u> | <u>Des.</u> | <u>Use</u> | <u>Repeat</u> |
| M | 00170 | NAD | Name and Address | M | 1 | |
| | 00180 | | Segment Group 5: Contact Information | C | | 1 |

Segment: **NAD** Name and Address
Position: 00170 (Trigger Segment)
Group: Segment Group 4 (Name and Address) Mandatory
Level: 1
Usage: Mandatory
Max Use: 1
Purpose: A segment to identify the party's name, address, and function, and other addresses, such as: - message recipient - message sender - ordering customer - ordering customer agent

Dependency Notes:**Semantic Notes:****Comments:**

Notes: Usage complemented in local document if mentioned in that document.

The entities are to be identified by their EORI. In Portugal the EORI id is composed by PT+[VAT number].

Example: Terminal operator identified by PT541495122.

NAD+TR+PT541495122'

Data Element Summary

| <u>Data Element</u> | <u>Component Element</u> | <u>Name</u> | <u>Base Attributes</u> | | <u>User Attributes</u> |
|---------------------|--------------------------|--|------------------------|----------------|------------------------|
| 3035 | | PARTY FUNCTION CODE QUALIFIER | M | 1 an..3 | M |
| | | Code giving specific meaning to a party. | | | |
| | | Usage complemented in local document if mentioned in that document. | | | |
| | | AG Agent | | | |
| | | If present in SG6, then it is not needed here. | | | |
| | | CA Carrier | | | |
| | | CF Container operator/lessee | | | |
| | | HR Shipping line service | | | |
| | | MR Message recipient | | | |
| | | MS Document/message issuer/sender | | | |
| | | TR Terminal operator | | | |
| C082 | | PARTY IDENTIFICATION DETAILS | C | 1 | R |
| | | Identification of a transaction party by code. | | | |
| | 3039 | Party identifier | M | an..35 | M |
| | | Code specifying the identity of a party. | | | |
| | | Number corresponding to EORI of the entity, or another code mutually agreed between the parties. | | | |

When DE:3035 = "MS" the value will be used in "Message Sender".

When DE:3035 = "TR" the value will be used in "Warehouse Keeper".

| | | | | | |
|-------------|-------------|--|----------|---------------|----------|
| | 1131 | Code list identification code | C | an..17 | O |
| | | Code identifying a user or association maintained code list. | | | |
| | | Usage complemented in local document if mentioned in that document. | | | |
| | | 160 Party identification | | | |
| | | 172 Carriers | | | |
| | 3055 | Code list responsible agency code | C | an..3 | O |
| | | Code specifying the agency responsible for a code list. | | | |
| | | Only for compatibility with SMDG proposal. It will not be processed by JUL system. | | | |
| | | Refer to D.16A Data Element Dictionary for acceptable code values. | | | |
| C058 | | NAME AND ADDRESS | C | 1 | O |
| | | Unstructured name and address: one to five lines. | | | |
| | | Only for compatibility with SMDG proposal. It will not be processed by JUL system. | | | |
| | 3124 | Name and address description | M | an..35 | M |
| | | Free form description of a name and address line. | | | |
| | 3124 | Name and address description | C | an..35 | O |
| | | Free form description of a name and address line. | | | |
| | 3124 | Name and address description | C | an..35 | O |
| | | Free form description of a name and address line. | | | |
| | 3124 | Name and address description | C | an..35 | O |
| | | Free form description of a name and address line. | | | |
| | 3124 | Name and address description | C | an..35 | O |
| | | Free form description of a name and address line. | | | |
| C080 | | PARTY NAME | C | 1 | X |
| | | Identification of a transaction party by name, one to five lines. Party name may be formatted. | | | |
| | 3036 | Party name | M | an..70 | X |
| | | Name of a party. | | | |
| | 3036 | Party name | C | an..70 | X |
| | | Name of a party. | | | |
| | 3036 | Party name | C | an..70 | X |
| | | Name of a party. | | | |
| | 3036 | Party name | C | an..70 | X |
| | | Name of a party. | | | |
| | 3036 | Party name | C | an..70 | X |
| | | Name of a party. | | | |
| | 3045 | Party name format code | C | an..3 | X |
| | | Code specifying the representation of a party name. | | | |

| | | | | | |
|-------------|--|----------|----------|---------------|----------|
| C059 | STREET | C | 1 | | X |
| | Street address and/or PO Box number in a structured address: one to four lines. | | | | |
| 3042 | Street and number or post office box identifier | M | | an..35 | X |
| | To identify a street and number and/or Post Office box number. | | | | |
| 3042 | Street and number or post office box identifier | C | | an..35 | X |
| | To identify a street and number and/or Post Office box number. | | | | |
| 3042 | Street and number or post office box identifier | C | | an..35 | X |
| | To identify a street and number and/or Post Office box number. | | | | |
| 3042 | Street and number or post office box identifier | C | | an..35 | X |
| | To identify a street and number and/or Post Office box number. | | | | |
| 3164 | CITY NAME | C | 1 | an..35 | X |
| C819 | COUNTRY SUBDIVISION DETAILS | C | 1 | | X |
| | To specify a country subdivision, such as state, canton, county, prefecture. | | | | |
| 3229 | Country subdivision identifier | C | | an..9 | X |
| | To identify a country subdivision, such as state, canton, county, prefecture. | | | | |
| 1131 | Code list identification code | C | | an..17 | X |
| | Code identifying a user or association maintained code list. | | | | |
| 3055 | Code list responsible agency code | C | | an..3 | X |
| | Code specifying the agency responsible for a code list. | | | | |
| 3228 | Country subdivision name | C | | an..70 | X |
| | Name of a country subdivision, such as state, canton, county, prefecture. | | | | |
| 3251 | POSTAL IDENTIFICATION CODE | C | 1 | an..17 | X |
| 3207 | COUNTRY IDENTIFIER | C | 1 | an..3 | O |
| | Identification of the name of the country or other geographical entity as defined in ISO 3166-1 and UN/ECE Recommendation 3. | | | | |
| | Usage complemented in local document if mentioned in that document. | | | | |
| | ISO 3166 Country Code (2-alpha). | | | | |

Group: **CTA** Segment Group 5: Contact Information

Position: 00180

Group: Segment Group 4 (Name and Address) Mandatory

Level: 2

Usage: Conditional (Optional)

Max Use: 1

Purpose: A group of segments to identify a contact and its communications related to the party.

Notes: Usage complemented in local document if mentioned in that document.

Display the person(s) or the specific department to be contacted for any matter related with this message, and the channel by which can be reached.

Segment Summary

| | Pos. | Seg. | | Req. | Max. | Group: |
|---|-------------------|------------------|-----------------------|--------------------|-------------------|----------------------|
| | <u>No.</u> | <u>ID</u> | <u>Name</u> | <u>Des.</u> | <u>Use</u> | <u>Repeat</u> |
| M | 00190 | CTA | Contact Information | M | 1 | |
| R | 00200 | COM | Communication Contact | C | 4 | |

Segment: **CTA Contact Information**
Position: 00190 (Trigger Segment)
Group: Segment Group 5 (Contact Information) Conditional (Optional)
Level: 2
Usage: Mandatory
Max Use: 1
Purpose: A segment to identify a person or department of a message sender and/or message recipient, such as: - information contact

Dependency Notes:**Semantic Notes:****Comments:****Notes:** Example: Contact Mr. Rui Silva.

CTA+IC+:RUI SILVA'

Data Element Summary

| <u>Data Element</u> | <u>Component Element</u> | <u>Name</u> | <u>Base Attributes</u> | <u>User Attributes</u> |
|---------------------|--------------------------|---|------------------------|------------------------|
| 3139 | | CONTACT FUNCTION CODE Code specifying the function of a contact (e.g. department or person). IC Information contact | C 1 an..3 | O |
| C056 | | CONTACT DETAILS Code and/or name of a contact such as a department or employee. Code preferred. | C 1 | O |
| | 3413 | Contact identifier | C an..17 | X |
| | 3412 | Contact name Name of a contact, such as a department or employee. | C an..256 | O |

Segment: **COM** **Communication Contact**
Position: 00200
Group: Segment Group 5 (Contact Information) Conditional (Optional)
Level: 3
Usage: Conditional (Required)
Max Use: 4
Purpose: A segment to identify a communication number of a person or department to whom communication should be directed.

Dependency Notes:**Semantic Notes:****Comments:**

Notes: Example: Contact by phone number 229390700.

COM+229390700:TE'

Example: Contact by email jose.silva@mybusiness.com

COM+JOSE.SILVA AT MYBUSINESS.COM:EM'

Data Element Summary

| <u>Data Element</u> | <u>Component Element</u> | <u>Name</u> | <u>Base Attributes</u> | | <u>User Attributes</u> |
|---------------------|--------------------------|--|------------------------|---------|------------------------|
| C076 | | COMMUNICATION CONTACT | M | 3 | M |
| | | Communication number of a department or employee in a specified channel. | | | |
| | 3148 | Communication address identifier | M | an..512 | M |
| | | To identify a communication address. | | | |
| | 3155 | Communication means type code | M | an..3 | M |
| | | Code specifying the type of communication address. | | | |
| | | EM Electronic mail | | | |
| | | FX Telefax | | | |
| | | TE Telephone | | | |
| | | TL Telex | | | |
| | | XF X.400 address | | | |

| | |
|------------------|--|
| Group: | EQD Segment Group 6: Equipment Details |
| Position: | 00210 |
| Group: | |
| Level: | 1 |
| Usage: | Mandatory |
| Max Use: | 9999 |
| Purpose: | A group of segments to specify containers or groups of containers (in case of guidelines) that are either to be loaded or to be discharged. |
| Notes: | <p>If the group is to instruct on movements of transport equipment, then the equipment must be identified and its tare must be provided. If it is full then information about the seal must be provided. Also in element EQD:8155 and if the equipment is a container, its ISO type according to ISO 6346 (2nd and 3rd editions) is sent. In this standard the first number of this codification provides the container length. If unknown then use the code defined for element EQD:8155 by UN/EDIFACT.</p> <p>The group is also to instruct on movements of general cargo (EQD:8053 = 'BB').</p> <p>In this case the group should contain information on a general cargo shipment of goods (shipment hereafter to simplify). This shipment can be identified by the transport document id only (in segment RFF), or complemented by a reference number provided by the terminal operator (also in segment RFF having RFF:1153 = 'UCN').</p> <p>Complementary to the weight (in segment MEA), information on the number of volumes should be provided (in segment FTX with FTX:4451 = 'PAC'), considering that bulk cargo count as 1 volume.</p> <p>Data of Marks & Numbers must be provided. However, it is possible that in a single shipment, several Marks & Numbers may exist. Due to COPRAR message structure definition, comparing with the possible number of different Marks & Numbers, the following usage was defined.</p> <p>Assuming a scenario where there are 2 shipments, but belonging to the same Bill of Lading, with id OPT51228, to be discharged from the means of transport (import). One shipment with total weight 350 Kg, identified by 00001 (id provided by the terminal operator), has 2 volumes. One volume is marked with VOL32, the other volume is marked with VOL47. The other shipment, with total weight of 410 Kg, identified by 00002 (id provided by the terminal operator), has 3 volumes: DD78, FF36 and LL14.</p> <p>The issue here is that the weight of each volume may not be available.</p> <p>This COPRAR MIG usage for this scenario will be the following. Send one occurrence of SG6 for each Marks & Numbers in stake. In each occurrence, use segment RFF to identify the Bill of Lading (or other transport document), the complementary reference provided by the terminal operator and the Marks & Numbers. Also, in the occurrence of segment MEA, the weight of the whole shipment should be present, and in segment FTX (with FTX:4451 = 'PAC') the</p> |

number of volumes of the whole shipment.

For the described scenario, the segment sequence would be something like:

```

...
EQD+BB++++3+6'
RFF+BM:OPT51228'
RFF+UCN:00001'
RFF+ACH:VOL32'
...
MEA+AAE+AAB+KGM:350'
...
FTX+PAC+++2:... '
...
EQD+BB++++3+6'
RFF+BM:OPT51228'
RFF+UCN:00001'
RFF+ACH:VOL47'
...
MEA+AAE+AAB+KGM:350'
...
FTX+PAC+++2:... '
...
EQD+BB++++3+6'
RFF+BM:OPT51228'
RFF+UCN:00002'
RFF+ACH:DD78'
...
MEA+AAE+AAB+KGM:410'
...
FTX+PAC+++3:... '
...
EQD+BB++++3+6'
RFF+BM:OPT51228'
RFF+UCN:00002'
RFF+ACH:FF36'
...
MEA+AAE+AAB+KGM:410'
...
FTX+PAC+++3:... '
...
EQD+BB++++3+6'
RFF+BM:OPT51228'
RFF+UCN:00002'
RFF+ACH:LL14'
...
MEA+AAE+AAB+KGM:410'
...
FTX+PAC+++3:... '
...

```

This structure usage allows the receiver to reproduce the set of Marks & Numbers of a particular shipment, even if it identified only by Bill of Lading (or other transport document).

If there are no marks associated with the shipment, then report "No Marks".

Segment Summary

| | Pos. | Seg. | | Req. | Max. | Group: |
|---|-------------------|------------------|---|--------------------|-------------------|----------------------|
| | <u>No.</u> | <u>ID</u> | <u>Name</u> | <u>Des.</u> | <u>Use</u> | <u>Repeat</u> |
| M | 00220 | EQD | Equipment Details | M | 1 | |
| O | 00230 | RFF | Reference | C | 2 | |
| O | 00240 | EQN | Number of Units | C | 1 | |
| O | 00250 | TMD | Transport Movement Details | C | 9 | |
| O | 00260 | DTM | Date/Time/Period | C | 1 | |
| R | 00270 | LOC | Place/Location Identification | C | 4 | |
| R | 00280 | MEA | Measurements | C | 3 | |
| O | 00290 | DIM | Dimensions | C | 5 | |
| | 00300 | | Segment Group 7: Temperature | C | | 4 |
| D | 00330 | SEL | Seal Number | C | 7 | |
| O | 00340 | FTX | Free Text | C | 7 | |
| | 00360 | | Segment Group 8: Dangerous Goods | C | | 99 |
| O | 00430 | EQA | Attached Equipment | C | 9 | |
| O | 00440 | HAN | Handling Instructions | C | 9 | |
| | 00450 | | Segment Group 10: Transport Information | C | | 2 |
| O | 00520 | NAD | Name and Address | C | 6 | |

Segment: **EQD** **Equipment Details**
Position: 00220 (Trigger Segment)
Group: Segment Group 6 (Equipment Details) Mandatory
Level: 1
Usage: Mandatory
Max Use: 1
Purpose: A segment identifying a container, container size/type. The equipment status may be e.g. import, export, transhipment, shifter.

Dependency Notes:**Semantic Notes:****Comments:**

Notes: This segment is to identify the transport equipment, its size/type, its status and if it is full or empty.

It is also used to indicate that the following segments in the group occurrence are related with general cargo (DE:8053 = 'BB').

If the transport equipment is other than an ISO container then DE:8155 shall have the proper value from the EDIFACT code list associated with this element.

If the transport equipment is an ISO container then DE:8155 shall have the ISO type according standard ISO 6346. If this code is unknown then place the proper value from EDIFACT code list associated with this element.

Example: Container CGTU 200311/5, 20 ft, export/load, full.

EQD+CN+CGTU2003115+21:102:6++2+5'

Example: Container GSTU 000029/0, 40 ft General purpose (ISO 40GP), transhipped, empty

EQD+CN+GSTU0000290+40GP:102:5++6+4'

Example: Trailer Z-53791, import/unload, full

EQD+TE+Z53791+14:102:6++3+5'

Example: group related with general cargo being imported

EQD+BB++++3+6'

Data Element Summary

| Data Element | Component Element Name | Base Attributes | User Attributes |
|---------------------|---|------------------------|------------------------|
| 8053 | EQUIPMENT TYPE CODE QUALIFIER | M 1 an..3 | M |
| | Code qualifying a type of equipment. | | |
| | BB Un-containerized cargo (breakbulk) | | |
| | This code is to be used when reporting general cargo shipment | | |

| | | | | | |
|-------------|-------------|--|----------|---------------|--|
| | | | | | movement. |
| | BPP | Truck and trailer combination being transported | | | It will be processed like 'TE'. |
| | | | | | Only for compatibility with SMDG proposal. |
| | CH | Chassis | | | It will be treated like 'TE'. |
| | | | | | Only for compatibility with SMDG proposal. |
| | CN | Container | | | |
| | PA | Pallet | | | |
| | PL | Platform | | | |
| | RG | Reefer generator | | | Only for compatibility with SMDG proposal. It will not be processed by JUL system. |
| | SW | Swap body | | | It will be treated like 'CN'. |
| | | | | | Only for compatibility with SMDG proposal. |
| | TE | Trailer | | | |
| C237 | | EQUIPMENT IDENTIFICATION | C | 1 | D |
| | | Marks (letters/numbers) identifying equipment. | | | |
| | | | | | This element is not to be used when reporting general cargo (DE:8053 = 'BB'). |
| | 8260 | Equipment identifier | C | an..17 | R |
| | | To identify equipment. | | | |
| | | | | | <i>The value will be used in "Identification" element in message SeaWarehouseKeeperContainerReport.</i> |
| | 1131 | Code list identification code | C | an..17 | X |
| | 3055 | Code list responsible agency code | C | an..3 | X |
| | 3207 | Country identifier | C | an..3 | X |
| C224 | | EQUIPMENT SIZE AND TYPE | C | 1 | D |
| | | Code and or name identifying size and type of equipment. Code preferred. | | | |
| | | | | | Usage complemented in local document if mentioned in that document. |
| | | | | | This element is not to be used when reporting general cargo (DE:8053 = 'BB'). |
| | 8155 | Equipment size and type description code | C | an..10 | O |
| | | Code specifying the size and type of equipment. | | | |
| | | | | | In case of ISO container equipment (DE:8053 = 'CN') and if its ISO type is known then send the Size/Type information according to ISO 6346 (2nd, 3rd edition and ammendments). |
| | | | | | Otherwise use UN/EDIFACT code list for Data Element 8155. |
| | | | | | <i>The value will be used in "Type" element in the SeaWarehouseKeeperContainerReport.</i> |

If EQD:8053 = 'CN' or treated like 'CN', then the value is the concatenation of 'CN' with ISO type present in DE:8155.

If EQD:8053 = 'TE' or treated like 'TE', then the value is 'OUTE'.

Otherwise the element should have 'OUBPP'.

Refer to D.16A Data Element Dictionary for acceptable code values.

| | | | | |
|-------------|---|--|----------------|----------|
| 1131 | Code list identification code | C | an..17 | O |
| | Code identifying a user or association maintained code list. | | | |
| | 102 | Size and type | | |
| 3055 | Code list responsible agency code | C | an..3 | O |
| | Code specifying the agency responsible for a code list. | | | |
| | 5 | ISO (International Organization for Standardization) | | |
| 8154 | Equipment size and type description | C | an..35 | O |
| | Free form description of the size and type of equipment. | | | |
| 8077 | EQUIPMENT SUPPLIER CODE | C | 1 an..3 | O |
| | Code specifying the party that is the supplier of the equipment. | | | |
| | Only for compatibility with SMDG proposal. It will not be processed by JUL system. | | | |
| | Refer to D.16A Data Element Dictionary for acceptable code values. | | | |
| 8249 | EQUIPMENT STATUS CODE | C | 1 an..3 | R |
| | Code specifying the status of equipment. | | | |

The value will be used in "Transshipment" element.

If DE:8249 = '6' then the value is "Yes". Otherwise is "No".

| | |
|----|---|
| 1 | Continental |
| | Only for compatibility with SMDG proposal. It will not be processed by JUL system. |
| 2 | Export |
| 3 | Import |
| 5 | Shifter |
| 6 | Transshipment |
| 14 | Reloader |
| | Usage complemented in local document if mentioned in that document. |

| | | | | |
|-------------|---|----------|----------------|----------|
| 8169 | FULL OR EMPTY INDICATOR CODE | C | 1 an..3 | R |
| | Code indicating whether an object is full or empty. | | | |

The value will be used to infer the value in "Empty Full" element in SeaWarehouseKeeperContainerReport, except when the value is '6'.

4 Empty
Use "Empty".

5 Full
Use "Full".

6 No volume available
To be used in case of general cargo (EQD:8053 = 'BB').

4233

MARKING INSTRUCTIONS CODE

C 1 an..3 X

Segment: **RFF** Reference
Position: 00230
Group: Segment Group 6 (Equipment Details) Mandatory
Level: 2
Usage: Conditional (Optional)
Max Use: 2
Purpose: A segment identifying a relevant reference number, such as: - container sequence number - upper equipment serial number of range - lower equipment serial number of range - carrier agent's reference numbers - shipping syndicate - marketing organization - container prefix - first part of container number

Dependency Notes:**Semantic Notes:****Comments:**

Notes: Usage complemented in local document if mentioned in that document.

If DE:1153 = 'BM' then the segment is referring the Bill of Lading identification (id). Although not the only transport document used in the business it is the most common. This is particular important when the group is referring to general cargo shipment since the transport document id is needed to identify the shipment. For this reason one occurrence of this segment with DE:1153 = 'BM' is required when EQD:8053 = 'BB'.

If DE:1153 = 'UCN' then the segment is referring a unique identification provided by the terminal operator in the context of general cargo movement (EQD:8053 = 'BB'). This number provides complementary data to identify the shipment, together with the transport document identification, given in another occurrence of this segment.

If DE:1153 = 'ACH' then the segment is referring the Marks & Numbers of a shipment. It must be send if EQD:8053 = 'BB'.

If DE:1153 = 'BN' then the segment is referring to a shipping line/agent booking number/id. Optional.

This reference refers to documents and not to messages.

Example: Booking number NB/0123/03.

RFF+BN:NB/0123/03'

The codes signaled in DE:1153 will be used to infer the value to put in element "Type" in element "CustomsDocument".

Data Element Summary

| Data Element | Component Element | Name | Base Attributes | | User Attributes |
|---------------------|--------------------------|--------------------------------|------------------------|---|------------------------|
| C506 | | REFERENCE | M | 1 | M |
| | | Identification of a reference. | | | |

| 1153 | Reference code qualifier | M | an.3 | M |
|------|---|---|------|---|
| | Code qualifying a reference. | | | |
| AAE | Goods declaration number Only for compatibility with SMDG proposal. It will not be processed by JUL system. | | | |
| AAO | Consignment identifier, consignee assigned Only for compatibility with SMDG proposal. It will not be processed by JUL system. | | | |
| AA Y | Carrier's agent reference number Only for compatibility with SMDG proposal. It will not be processed by JUL system. | | | |
| ABT | Goods declaration document identifier, Customs Only for compatibility with SMDG proposal. It will not be processed by JUL system. | | | |
| ABZ | Vehicle licence number Only for compatibility with SMDG proposal. It will not be processed by JUL system. | | | |
| ACD | Additional reference number Only for compatibility with SMDG proposal. It will not be processed by JUL system. | | | |
| ACH | Packaging unit identification Use this qualifier when the value provides the Marks & Numbers in a general cargo shipment situation (EQD:8053 = 'BB', see SG6 (EQD) notes). | | | |
| | <i>The several values that may appear due to several occurrences of SG6(EQD), see notes on the usage of SG6, related with the same general cargo shipment, will be concatenated and placed in element 'Marks And Numbers' in message SeaWarehouseKeeperCargoReport.</i> | | | |
| AEW | Empty container bill number Document of Transport. Only applied for empty containers being repositioned. | | | |
| AHI | Transport contract reference number Only for compatibility with SMDG proposal. It will not be processed by JUL system. | | | |
| AKB | Container prefix Only for compatibility with SMDG proposal. It will not be processed by JUL system. | | | |
| AKG | Vehicle Identification Number (VIN) Only for compatibility with SMDG proposal. It will not be processed by JUL system. | | | |
| AKW | Transport costs reference number Only for compatibility with SMDG proposal. It will not be processed by JUL system. | | | |
| ARJ | Personal identity card number | | | |

| | |
|-----|--|
| | Only for compatibility with SMDG proposal. It will not be processed by JUL system. |
| ATW | Flat rack container bundle identification number Only for compatibility with SMDG proposal. It will not be processed by JUL system. |
| AUA | Place of positioning reference Only for compatibility with SMDG proposal. It will not be processed by JUL system. |
| BM | Bill of lading number Required if EQD:8053 = 'BB' |
| | <i>Send value 'N705' in element "Type".</i> |
| BN | Consignment identifier, carrier assigned Also known as Booking Number. |
| BST | Blockstow reference Temporary code. Only for compatibility with SMDG proposal. It will not be processed by JUL system. |
| BT | Batch number/lot number Only for compatibility with SMDG proposal. It will not be processed by JUL system. |
| CN | Carrier's reference number Only for compatibility with SMDG proposal. It will not be processed by JUL system. |
| CT | Contract number Only for compatibility with SMDG proposal. It will not be processed by JUL system. |
| CU | Consignment identifier, consignor assigned Only for compatibility with SMDG proposal. It will not be processed by JUL system. |
| CV | Container operators reference number Only for compatibility with SMDG proposal. It will not be processed by JUL system. |
| DR | Dock receipt number Only for compatibility with SMDG proposal. It will not be processed by JUL system. |
| EQ | Equipment number Only for compatibility with SMDG proposal. It will not be processed by JUL system. |
| ER | Container/equipment receipt number Only for compatibility with SMDG proposal. It will not be processed by JUL system. |
| MKS | Marks and numbers Only for compatibility with SMDG proposal. It will not be processed by JUL system. |
| RE | Release number Only for compatibility with SMDG proposal. It will |

| | | | | | |
|-------------|--|--|----------|---------------|--|
| | | | | | not be processed by JUL system. |
| | SQ | Equipment sequence number | | | Only for compatibility with SMDG proposal. It will not be processed by JUL system. |
| | TF | Transfer number | | | Only for compatibility with SMDG proposal. It will not be processed by JUL system. |
| | UCN | Unique consignment reference number | | | Advised if EQD:8053 = 'BB'. |
| | VGR | Transport equipment gross mass verification reference number | | | Only for compatibility with SMDG proposal. It will not be processed by JUL system. |
| | VN | Order number (vendor) | | | Only for compatibility with SMDG proposal. It will not be processed by JUL system. |
| | VT | Motor vehicle identification number | | | Only for compatibility with SMDG proposal. It will not be processed by JUL system. |
| 1154 | Reference identifier | | C | an..70 | R |
| | Identifies a reference. | | | | |
| | <i>The value will be used in "Booking Number" element when DE:1153 = 'BN'.</i> | | | | |
| | <i>The value will be used in "Unique Number" element in message SeaWarehouseKeeperCargoReport when DE:1153 = 'UCN'.</i> | | | | |
| | <i>The value will be used in "Marks And Numbers" element in message SeaWarehouseKeeperCargoReport when DE:1153 = 'ACH'.</i> | | | | |
| | <i>If the value in DE:1153 is signaled to be used in element "Type", then the value in this element is to be used in "Number".</i> | | | | |
| 1156 | Document line identifier | | C | an..6 | X |
| 1056 | Version identifier | | C | an..9 | X |
| 1060 | Revision identifier | | C | an..6 | X |

Segment: **EQN** Number of Units
Position: 00240
Group: Segment Group 6 (Equipment Details) Mandatory
Level: 2
Usage: Conditional (Optional)
Max Use: 1
Purpose: A segment to specify the number of containers in one guideline that meets the same equipment details information.

Dependency Notes:**Semantic Notes:****Comments:**

Notes: Only for compatibility with SMDG proposal. It will not be processed by JUL system.

Data Element Summary

| Data Element | Component Element | Name | Base Attributes | | User Attributes |
|---------------------|--------------------------|---|------------------------|--------------|------------------------|
| C523 | | NUMBER OF UNIT DETAILS Identification of number of units and its purpose. | M | 1 | M |
| | 6350 | Units quantity To specify the number of units. | C | n..15 | O |
| | 6353 | Unit type code qualifier | C | an..3 | X |

Segment: **TMD** Transport Movement Details
Position: 00250
Group: Segment Group 6 (Equipment Details) Mandatory
Level: 2
Usage: Conditional (Optional)
Max Use: 9
Purpose: A segment to indicate a Full Container Load (FCL) or a Less than Full Container Load (LCL).

Dependency Notes:**Semantic Notes:****Comments:**

Notes: Only for compatibility with SMDG proposal. It will not be processed by JUL system.

Data Element Summary

| Data Element | Component Element | Name | Base Attributes | | User Attributes |
|---------------------|--------------------------|--|------------------------|----------|------------------------|
| C219 | | MOVEMENT TYPE | C | 1 | O |
| | | Description of type of service for movement of cargo. | | | |
| | 8335 | Movement type description code | C | an..3 | O |
| | | Code specifying a type of movement. | | | |
| | | Refer to D.16A Data Element Dictionary for acceptable code values. | | | |
| | 8334 | Movement type description | C | an..35 | X |
| 8332 | | EQUIPMENT PLAN DESCRIPTION | C | 1 an..26 | X |
| 8341 | | HAULAGE ARRANGEMENTS CODE | C | 1 an..3 | O |
| | | Code specifying the arrangement for the haulage of goods. | | | |
| | | Refer to D.16A Data Element Dictionary for acceptable code values. | | | |

Segment: **DTM** Date/Time/Period
Position: 00260
Group: Segment Group 6 (Equipment Details) Mandatory
Level: 2
Usage: Conditional (Optional)
Max Use: 1
Purpose: A segment to identify a date/time related to the equipment, such as: - actual arrival/departure date/time - CSC expiration date (International Convention for Safe Containers)

Dependency Notes:**Semantic Notes:****Comments:**

Notes: This segment is to provide date and time the weight declared in segment MEA corresponds to the Verified Gross Mass according to SOLAS.

Not to be used if EQD:8053 = 'BB'.

Example: Verified gross mass determination date/time on 2019/02/01 at 14:21.

DTM+798:201902011421:203'

Data Element Summary

| <u>Data Element</u> | <u>Component Element</u> | <u>Name</u> | <u>Base Attributes</u> | | <u>User Attributes</u> |
|---------------------|--------------------------|--|------------------------|-------|------------------------|
| C507 | | DATE/TIME/PERIOD | M | 1 | M |
| | | Date and/or time, or period relevant to the specified date/time/period type. | | | |
| | 2005 | Date or time or period function code qualifier | M | an..3 | M |
| | | Code qualifying the function of a date, time or period. | | | |
| | | 7 Effective from date/time Only for compatibility with SMDG proposal. It will not be processed by JUL system. | | | |
| | | 36 Expiry date Only for compatibility with SMDG proposal. It will not be processed by JUL system. | | | |
| | | 94 Production/manufacture date Only for compatibility with SMDG proposal. It will not be processed by JUL system. | | | |
| | | 171 Reference date/time Only for compatibility with SMDG proposal. It will not be processed by JUL system. | | | |
| | | 181 Positioning date/time of equipment Only for compatibility with SMDG proposal. It will not be processed by JUL system. | | | |
| | | 201 Equipment pick-up date / time Only for compatibility with SMDG proposal. It will not be processed by JUL system. | | | |
| | | 371 Hydrotest date | | | |

| | | | | | |
|-------------|---|--|----------|---------------|--|
| | | | | | Only for compatibility with SMDG proposal. It will not be processed by JUL system. |
| 376 | | Biannual terminal inspection date | | | Only for compatibility with SMDG proposal. It will not be processed by JUL system. |
| 377 | | Federal Highway Administration (FHWA) inspection date | | | Only for compatibility with SMDG proposal. It will not be processed by JUL system. |
| 378 | | Container Safety Convention (CSC) inspection date | | | Only for compatibility with SMDG proposal. It will not be processed by JUL system. |
| 379 | | Periodic inspection date | | | Only for compatibility with SMDG proposal. It will not be processed by JUL system. |
| 395 | | Equipment positioning date/time, estimated | | | Only for compatibility with SMDG proposal. It will not be processed by JUL system. |
| 396 | | Equipment positioning date/time, requested | | | Only for compatibility with SMDG proposal. It will not be processed by JUL system. |
| 397 | | Equipment positioning date/time, ultimate | | | Only for compatibility with SMDG proposal. It will not be processed by JUL system. |
| 400 | | Cargo release date/time, ultimate | | | Only for compatibility with SMDG proposal. It will not be processed by JUL system. |
| 798 | | Verified gross mass determination date/time | | | |
| 2380 | Date or time or period text | | C | an..35 | R |
| | | The value of a date, a date and time, a time or of a period in a specified representation. | | | |
| 2379 | Date or time or period format code | | C | an..3 | R |
| | | Code specifying the representation of a date, time or period. | | | |
| | 102 | CCYYMMDD | | | Only for compatibility with SMDG proposal. It will not be processed by JUL system. |
| | 203 | CCYYMMDDHHMM | | | |

Segment: **LOC** Place/Location Identification
Position: 00270
Group: Segment Group 6 (Equipment Details) Mandatory
Level: 2
Usage: Conditional (Required)
Max Use: 4
Purpose: A segment to identify a location or country related to the equipment, such as: - stowage cell - (final) place/port of discharge - transhipment place - place of delivery - country of origin/destination

Dependency Notes:**Semantic Notes:****Comments:****Notes:**

This segment is to provide ports that are in the route of the transport equipment or general cargo shipment (shipment to simplify), locations of the transport equipment or shipment while in the port, and the identification of the Temporary Storage Warehouse Identification where the transport equipment or shipment will be located.

The ports to be reported depend of the equipment or shipment status stated in element 8249 of segment EQD.

The port of loading (DE:3227 = '9'), in case of a transport discharge instruction, and port of discharge (DE:3227 = '11'), in case of transport loading instruction, must always be reported.

If the equipment or shipment is being imported then the port of loading is the port in which the equipment or shipment was moved into the vessel from which will be discharged.

If the equipment or shipment is being exported then the port of discharge is the port in which the equipment or shipment will be moved out of the vessel to which will be loaded.

If the equipment or shipment is being transhipped then the port of loading is the port in which the equipment or shipment was moved into the vessel and the port of discharge is the port in which the equipment or shipment will be moved out of the vessel. But due to the availability of information, it is admissible that the port of discharge is reported as being the current port, provided that the information is updated later (by sending a change message, or by reporting the correct port in the loading report).

In some situations, the code in DE:C517:3225 is not sufficient to identify the location for deliver, r reception or movemnt of goods, due to the lack of detail inherent to the reference code and a particular installation may be identified. To mitigate this limitation, two options are considered to provide complementary data. One is by using DE:C519:3223 based on a non-standard list. The other and preferred, is to identify the entity operating the installation in SG20:NAD with the value of SG20:NAD:3035 in {'JB', 'JC'}.

Example: Port of loading Rotterdam

LOC+9+NLR TM:139:6'

Example: The temporary storage warehouse location identifier is
DTP00000051258PT

LOC+281++DTP00000051258PT'

Example: (new proposal) Place of delivery is Plataforma Logística da Bobadela

LOC+7+PTBBL'

Example: (only for backward compability) Place of delivery is Plataforma Logística da Bobadela

LOC+7+PTSIE:139:6+Z05:ZZZ:ZZZ'

Data Element Summary

| <u>Data Element</u> | <u>Component Element</u> | <u>Name</u> | <u>Base Attributes</u> | <u>User Attributes</u> |
|---------------------|--------------------------|--|------------------------|------------------------|
| 3227 | | LOCATION FUNCTION CODE QUALIFIER | M 1 an..3 | M |
| | | Code identifying the function of a location. | | |
| | 5 | Place of departure <i>Only for compatibility with SMDG proposal. It will not be processed by JUL system.</i> | | |
| | 7 | Place of delivery | | |
| | 8 | Place of destination <i>Only for compatibility with SMDG proposal. It will not be processed by JUL system.</i> | | |
| | 9 | Place of loading <i>Required in case of discharge instruction (BGM:1001: = '118').</i> | | |
| | 11 | Place of discharge <i>Required in case of loading instruction (BGM:1001 = '121').</i> | | |
| | | <i>In case an occurrence of SG7(LOC) with this code qualifier, then the value in DE:3225 will be used in element "Destination Port".</i> | | |
| | 15 | Place of transfer responsibility <i>Only for compatibility with SMDG proposal. It will not be processed by JUL system.</i> | | |
| | 33 | Baseport of discharge <i>Only for compatibility with SMDG proposal. It will not be processed by JUL system.</i> | | |
| | 34 | Baseport of loading <i>Only for compatibility with SMDG proposal. It will not be processed by JUL system.</i> | | |

| | |
|-----|--|
| 65 | Final port or place of discharge Only for compatibility with SMDG proposal. It will not be processed by JUL system. |
| 88 | Place of receipt Only for compatibility with SMDG proposal. It will not be processed by JUL system. |
| 98 | Place of empty equipment despatch Only for compatibility with SMDG proposal. It will not be processed by JUL system. |
| 147 | Transport means stowage location Only for compatibility with SMDG proposal. It will not be processed by JUL system. |
| 154 | Place/location of on-hire Only for compatibility with SMDG proposal. It will not be processed by JUL system. |
| 155 | Place/location of off-hire Only for compatibility with SMDG proposal. It will not be processed by JUL system. |
| 170 | Final port of discharge Only for compatibility with SMDG proposal. It will not be processed by JUL system. |
| 171 | Place of destination for pre-stacking prior to stowage Only for compatibility with SMDG proposal. It will not be processed by JUL system. |
| 175 | Activity location Only for compatibility with SMDG proposal. It will not be processed by JUL system. |
| 281 | Bonded warehouse Use this code when identifying the Temporary Storage Warehouse. |

C517

| | | | | |
|-------------|---|----------|----------------|----------|
| | LOCATION IDENTIFICATION | C | 1 | D |
| | Identification of a location by code or name. Not to use when DE:3227 = '281'. | | | |
| 3225 | Location identifier | C | an..35 | R |
| | To identify a location. Use UN/ECE Recommendation 16 (3rd edition) - UN/LOCODE- Codes for Port and Other Locations (Doc. Ref. ECE/TRADE/227) upgraded to 2003.2 version. | | | |
| 1131 | Code list identification code | C | an..17 | O |
| | Code identifying a user or association maintained code list. 139 Port | | | |
| 3055 | Code list responsible agency code | C | an..3 | O |
| | Code specifying the agency responsible for a code list. 6 UN/ECE (United Nations - Economic Commission for Europe) | | | |
| 3224 | Location name | C | an..256 | O |
| | Name of the location. | | | |

| | | | | | |
|-------------|---|---|---------------|--------------|----------|
| | | <i>Only for compatibility with SMDG proposal. It will not be processed by JUL system.</i> | | | |
| C519 | RELATED LOCATION ONE IDENTIFICATION | C | 1 | | D |
| | Identification the first related location by code or name. | | | | |
| | Usage complemented in local document if mentioned in that document. | | | | |
| | Required if DE:3227 = '281'. | | | | |
| 3223 | First related location identifier | C | an..35 | | O |
| | To identify a first related location. | | | | |
| | Usage complemented in local document if mentioned in that document. | | | | |
| | When DE:3227 = '281' then provide the temporary storage warehouse identification. | | | | |
| | <i>If DE:3227 = '281' the value should be placed in "Temporary Storage Warehouse Identification" element.</i> | | | | |
| 1131 | Code list identification code | C | an..17 | | O |
| | Code identifying a user or association maintained code list. | | | | |
| | <i>ZZZ</i> | Mutually defined | | | |
| 3055 | Code list responsible agency code | C | an..3 | | O |
| | Code specifying the agency responsible for a code list. | | | | |
| | <i>ZZZ</i> | Mutually defined | | | |
| 3222 | First related location name | C | an..70 | | O |
| | Name of first related location. | | | | |
| | <i>Only for compatibility with SMDG proposal. It will not be processed by JUL system.</i> | | | | |
| C553 | RELATED LOCATION TWO IDENTIFICATION | C | 1 | | O |
| | Identification of second related location by code or name. | | | | |
| | <i>Only for compatibility with SMDG proposal. It will not be processed by JUL system.</i> | | | | |
| 3233 | Second related location identifier | C | an..35 | | O |
| | To identify a second related location. | | | | |
| 1131 | Code list identification code | C | an..17 | | O |
| | Code identifying a user or association maintained code list. | | | | |
| 3055 | Code list responsible agency code | C | an..3 | | O |
| | Code specifying the agency responsible for a code list. | | | | |
| | Refer to D.16A Data Element Dictionary for acceptable code values. | | | | |
| 3232 | Second related location name | C | an..70 | | O |
| | Name of the second related location. | | | | |
| 5479 | RELATION CODE | C | 1 | an..3 | X |

Segment: **MEA** Measurements
Position: 00280
Group: Segment Group 6 (Equipment Details) Mandatory
Level: 2
Usage: Conditional (Required)
Max Use: 3
Purpose: A segment specifying a physical measurement related to the equipment, such as: - gross weight

Dependency Notes:**Semantic Notes:****Comments:**

Notes: This segment is used to provide information about the weights related with the equipment or the general cargo shipment.

In compliance with the SOLAS Convention, if the Verified Gross Weight is known, then this must be the value to report.

If the equipment is empty, then a gross weight of zero must be declared.

Example: Equipment gross weight 31703 kilograms.

MEA+AAE+AET+KGM:31703'

Example: Equipment verified gross weight according to SOLAS Convention rules and procedures is 24023 kilograms.

MEA+AAE+VGM+KGM:24023'

Example: General cargo shipment weight 123753 kilograms.

MEA+AAE+AAB+KGM:123753'

Data Element Summary

| Data Element | Component Element | Name | Base Attributes | User Attributes |
|---------------------|--------------------------|--|------------------------|------------------------|
| 6311 | | MEASUREMENT PURPOSE CODE QUALIFIER | 1 an..3 | M |
| | | Code qualifying the purpose of the measurement. | | |
| | AAE | Measurement | | |
| C502 | | MEASUREMENT DETAILS | C 1 | R |
| | | Identification of measurement type. | | |
| | 6313 | Measured attribute code | C an..3 | R |
| | | Code specifying the attribute measured. | | |
| | AAA | Net weight | | |
| | | Only for compatibility with code 'AAL' in SMDG proposal. It will not be processed by JUL system. | | |
| | AAB | Goods item gross weight | | |

| | | | | | |
|-------------|-------------|---|----------|---------------|--|
| | | | | | Use in case of general cargo shipment (EQD:8053 = 'BB'). |
| | AAO | Humidity | | | Only for compatibility with SMDG proposal. It will not be processed by JUL system. |
| | AAS | Air flow | | | Only for compatibility with SMDG proposal. It will not be processed by JUL system. |
| | AAW | Gross volume | | | Only for compatibility with SMDG proposal. It will not be processed by JUL system. |
| | ABJ | Volume | | | Only for compatibility with SMDG proposal. It will not be processed by JUL system. |
| | AET | Transport equipment gross weight | | | |
| | CD | Carbondioxide | | | Carbondioxide setting in percentage. |
| | | | | | Only for compatibility with SMDG proposal. It will not be processed by JUL system. |
| | G | Gross weight | | | Usage complemented in local document if mentioned in that document. |
| | | | | | It will be treated like 'AET'. |
| | MW | Maximum weight | | | Only for compatibility with SMDG proposal. It will not be processed by JUL system. |
| | T | Tare weight | | | Use in case of transport equipment (EQD:8053 <> 'BB'). |
| | VGM | Transport equipment verified gross mass (weight) | | | |
| | ZO | Oxygen | | | Only for compatibility with SMDG proposal. It will not be processed by JUL system. |
| | 6321 | Measurement significance code | C | an..3 | X |
| | 6155 | Non-discrete measurement name code | C | an..17 | X |
| | 6154 | Non-discrete measurement name | C | an..70 | X |
| C174 | | VALUE/RANGE | C | 1 | R |
| | | Measurement value and relevant minimum and maximum values of the measurement range. | | | |
| | 6411 | Measurement unit code | C | an..8 | R |
| | | Code specifying the unit of measurement. | | | |
| | FTQ | Cubic Feet | | | Only for compatibility with SMDG proposal. It will not be processed by JUL system. |
| | KGM | Kilograms | | | |
| | LBR | Pounds | | | |

| | | | | | |
|-------------|--|--------------|----------|----------------|--|
| | | | | | Only for compatibility with SMDG proposal. It will not be processed by JUL system. |
| | MTQ | Cubic Meters | | | Only for compatibility with SMDG proposal. It will not be processed by JUL system. |
| | PCT | Percentage | | | Only for compatibility with SMDG proposal. It will not be processed by JUL system. |
| 6314 | Measure | | C | an..18 | R |
| | To specify the value of a measurement. | | | | |
| | If the value is not available, put '0'. | | | | |
| | <i>The value will be used in "Gross Weight" element when DE:6313 in {'AET', 'G', 'VGM'}.</i> | | | | |
| 6162 | Range minimum quantity | | C | n..18 | X |
| 6152 | Range maximum quantity | | C | n..18 | X |
| 6432 | Significant digits quantity | | C | n..2 | X |
| 7383 | SURFACE OR LAYER CODE | | C | 1 an..3 | X |

Segment: **DIM** Dimensions
Position: 00290
Group: Segment Group 6 (Equipment Details) Mandatory
Level: 2
Usage: Conditional (Optional)
Max Use: 5
Purpose: A segment specifying physical dimensions related to the equipment, such as: - gross dimensions - off standard dimension general - off standard dimension left - off standard dimension right - off standard dimension back - off standard dimension front

Dependency Notes:**Semantic Notes:****Comments:**

Notes: Example: Transport equipment has off-standard height by additional 23 cm.

DIM+13+CMT:::23'

Example: Transport equipment has extra 40 cm in length, 8 cm in width, and 9 cm in height.

DIM+9+CMT:40:8:9'

Data Element Summary

| Data Element | Component Element | Name | Base Attributes | | | User Attributes |
|---------------------|--------------------------|---|------------------------|----------|--------------|------------------------|
| 6145 | | DIMENSION TYPE CODE QUALIFIER | M | 1 | an..3 | M |
| | | Code qualifying the type of the dimension. | | | | |
| | | 1 Gross dimensions | | | | |
| | | To be used for general cargo shipment only (EQD:8053 = 'BB'). | | | | |
| | | 5 Off-standard dimension front | | | | |
| | | 6 Off-standard dimension back | | | | |
| | | 7 Off-standard dimension right | | | | |
| | | 8 Off-standard dimension left | | | | |
| | | 9 Off-standard dimension general | | | | |
| | | 10 External equipment dimension | | | | |
| | | To be used for non-ISO equipment only. | | | | |
| | | 13 Off-standard dimensions height | | | | |
| C211 | | DIMENSIONS | M | 1 | | M |
| | | Specification of the dimensions of a transportable unit. | | | | |
| | 6411 | Measurement unit code | M | | an..8 | M |
| | | Code specifying the unit of measurement. | | | | |
| | 6168 | Length measure | C | | n..15 | O |

To specify the value of a length dimension.

Overall length if DE:6145 in {'1', '10'}.

Overlength if DE:6145 in {'5', '6'}.

6140 Width measure C n..15 O

To specify the value of a width dimension.

Overall width if DE:6145 in {'1', '10'}.

Overwidth if DE:6145 in {'7', '8'}.

6008 Height measure C n..15 O

To specify the value of a height dimension.

Overall height if DE:6145 in {'1', '10'}.

Overheight if DE:6145 = '13'.

6182 Diameter measure C n..15 X

Group: **TMP** Segment Group 7: Temperature
Position: 00300
Group: Segment Group 6 (Equipment Details) Mandatory
Level: 2
Usage: Conditional (Dependent)
Max Use: 4
Purpose: A segment group to identify transport related temperature settings.
Notes: Not used in case of general cargo shipment (EQD:8053 = 'BB').

This segment group is used to provide information on temperature that a transport equipment must be set during its movement through the port. This is a typical case with reefer containers.

Segment Summary

| | Pos. | Seg. | | Req. | Max. | Group: |
|---|-------------------|------------------|--------------------|--------------------|-------------------|----------------------|
| | <u>No.</u> | <u>ID</u> | <u>Name</u> | <u>Des.</u> | <u>Use</u> | <u>Repeat</u> |
| M | 00310 | TMP | Temperature | M | 1 | |
| O | 00320 | RNG | Range Details | C | 1 | |

Segment: **TMP** Temperature
Position: 00310 (Trigger Segment)
Group: Segment Group 7 (Temperature) Conditional (Dependent)
Level: 2
Usage: Mandatory
Max Use: 1
Purpose: A segment which identifies the transport temperature setting of the container.
Dependency Notes:
Semantic Notes:
Comments:
Notes: Example: Equipment inside temperature must be 5° C
 TMP+2+5:CEL'

Data Element Summary

| <u>Data Element</u> | <u>Component Element</u> | <u>Name</u> | <u>Base Attributes</u> | <u>User Attributes</u> |
|---------------------|--------------------------|--|------------------------|------------------------|
| 6245 | | TEMPERATURE TYPE CODE QUALIFIER | M 1 an..3 | M |
| | | Code qualifying the type of a temperature. | | |
| | | 2 Transport temperature | | |
| | | 3 Cargo operating temperature | | |
| | | 4 Transport emergency temperature | | |
| | | 5 Transport control temperature | | |
| C239 | | TEMPERATURE SETTING | C 1 | R |
| | | The temperature under which the goods are (to be) stored or shipped. | | |
| | 6246 | Temperature degree | C n..15 | R |
| | | To specify the value of a temperature. | | |
| | 6411 | Measurement unit code | C an..8 | R |
| | | Code specifying the unit of measurement. | | |
| | | CEL Celsius | | |
| | | FAH Fahrenheit | | |

| | |
|--------------------------|---|
| Segment: | RNG Range Details |
| Position: | 00320 |
| Group: | Segment Group 7 (Temperature) Conditional (Dependent) |
| Level: | 3 |
| Usage: | Conditional (Optional) |
| Max Use: | 1 |
| Purpose: | A segment to specify the transport temperature range setting of the container. |
| Dependency Notes: | |
| Semantic Notes: | |
| Comments: | |
| Notes: | Only to be used when a temperature range is to be specified. When a set temperature is to be specified, the TMP segment must be used. |
| | Example: Temperature should not be lower than 2° C or higher than 7° C. |
| | RNG+5+CEL:2:7' |

Data Element Summary

| <u>Data Element</u> | <u>Component Element</u> | <u>Name</u> | <u>Base Attributes</u> | | | <u>User Attributes</u> |
|---------------------|--------------------------|---|------------------------|----------|--------------|------------------------|
| 6167 | | RANGE TYPE CODE QUALIFIER Code qualifying a type of range. 5 Temperature range | M | 1 | an..3 | M |
| C280 | | RANGE Range minimum and maximum limits. | C | 1 | | R |
| | 6411 | Measurement unit code Code specifying the unit of measurement. CEL Celsius FAH Fahrenheit | M | | an..8 | M |
| | 6162 | Range minimum quantity To specify the minimum value of a range. | C | | n..18 | R |
| | 6152 | Range maximum quantity To specify the maximum value of a range. | C | | n..18 | R |

Segment: **SEL** Seal Number
Position: 00330
Group: Segment Group 6 (Equipment Details) Mandatory
Level: 2
Usage: Conditional (Dependent)
Max Use: 7
Purpose: A segment identifying a seal number related to the equipment.
Dependency Notes:
Semantic Notes:
Comments:

Notes: Usage complemented in local document if mentioned in that document.

Segment must be used when the transport equipment is full (EQD:8169 = '5').

Not applicable to general cargo shipment (EQD:8053 = 'BB').

Example: Carrier seal 6629290

SEL+6629290+CA'

Example: Mechanical seal 591753 in right condition

SEL+591753++1++1'

Example: Illegible seal from unknown origin

SEL+ILLEGIBLE+AB'

Data Element Summary

| <u>Data Element</u> | <u>Component Element</u> | <u>Name</u> | <u>Base Attributes</u> | | <u>User Attributes</u> |
|---------------------|--------------------------|--|------------------------|----------|------------------------|
| 9308 | | TRANSPORT UNIT SEAL IDENTIFIER | C | 1 an..35 | O |
| | | The identification number of a seal affixed to a transport unit. | | | |
| C215 | | SEAL ISSUER | C | 1 | O |
| | | Identification of the issuer of a seal on equipment either by code or by name. | | | |
| | 9303 | Sealing party name code | C | an..3 | O |
| | | Code specifying the name of the sealing party. | | | |
| | | Refer to D.16A Data Element Dictionary for acceptable code values. | | | |
| | 1131 | Code list identification code | C | an..17 | X |
| | 3055 | Code list responsible agency code | C | an..3 | X |
| | 9302 | Sealing party name | C | an..35 | O |
| | | Name of the sealing party. | | | |
| 4517 | | SEAL CONDITION CODE | C | 1 an..3 | O |
| | | Code specifying the condition of a seal. | | | |
| | | Refer to D.16A Data Element Dictionary for acceptable code values. | | | |

| | | | | |
|-------------|---|----------|----------------|----------|
| C208 | IDENTITY NUMBER RANGE | C | 1 | X |
| | Goods item identification numbers, start and end of consecutively numbered range. | | | |
| 7402 | Object identifier | M | an..35 | X |
| | Code specifying the unique identity of an object. | | | |
| 7402 | Object identifier | C | an..35 | X |
| | Code specifying the unique identity of an object. | | | |
| 4525 | SEAL TYPE CODE | C | 1 an..3 | O |
| | To specify a type of seal. | | | |
| | Refer to D.16A Data Element Dictionary for acceptable code values. | | | |

Segment: **FTX** Free Text
Position: 00340
Group: Segment Group 6 (Equipment Details) Mandatory
Level: 2
Usage: Conditional (Optional)
Max Use: 7
Purpose: A segment to specify supplementary information related to the equipment, such as: - blockade reason - government inspection service - container loading remarks - container remarks - container order information - additional remarks concerning the container - container safety convention plate - continuous examination program (ACEP)

Dependency Notes:**Semantic Notes:****Comments:****Notes:**

Usage complemented in local document if mentioned in that document.

This segment is required in case of general cargo shipment (EQD:8053 = 'BB') to inform the number and type of volumes, according to UN/ECE Recommendation 21 - Codes for Types of Cargo, Packages and Packaging Materials according to Annex V and Annex VI (Doc. Ref. TRADE/CEFACT/2002/), being moved. If it is a bulk cargo (solid or liquid) then the number of volumes is 1 (one). Additionally, it is also used to report the nature of cargo according to Annex II - Eurostat Maritime Transport Directive.

Otherwise this segment is to report complementary information, compulsory or not.

Example: The transport equipment is being reported for the first time.

FTX+WHI+++Create'

Example: The goods inside the equipment of transport are non-EU, associated with Customs Dispatch document 12PT00067000000000.

FTX+CUS+++NC:12PT00067000000000'

Example: The general cargo shipment is made of 8 barrels.

FTX+PAC+++8:BA'

Example: Solid bulk, agricultural products

FTX+ACB+++23'

When reporting information regarding the Action at Item level in the Customs messages, since this message is about instructions, the values can not be "...AndFinalize" because the discharge/loading is still to be done. Depending on the message function at BGM:1225, the possible are "Create", "Update" and "Remove".

Data Element Summary

| <u>Data Element</u> | <u>Component Element</u> | <u>Name</u> | <u>Base Attributes</u> | <u>User Attributes</u> |
|---------------------|--------------------------|---|------------------------|------------------------|
| 4451 | | TEXT SUBJECT CODE QUALIFIER | M 1 an..3 | M |
| | | Code qualifying the subject of the text. | | |
| | | Usage complemented in local document if mentioned in that document. | | |
| | AAA | Goods item description | | |
| | AAI | General information | | |
| | ABS | Additional conditions | | |
| | | To be used for VGM related information. | | |
| | ACB | Additional information | | |
| | | Only used if EQD:8053 = 'BB'. | | |
| | ACF | Additional attribute information | | |
| | | Only for compatibility with SMDG proposal. It will not be processed by JUL system. | | |
| | ADZ | CSC (Container Safety Convention) plate information | | |
| | | Only for compatibility with SMDG proposal. It will not be processed by JUL system. | | |
| | CUS | Customs declaration information | | |
| | | Goods customs information: status (1st element 4440) and/or reference (2nd element 4440). | | |
| | DAR | Damage remarks | | |
| | HAN | Consignment handling instruction | | |
| | INV | Invoice instruction | | |
| | | Only for compatibility with SMDG proposal. It will not be processed by JUL system. | | |
| | LOI | Loading instruction | | |
| | | Only for compatibility with SMDG proposal. It will not be processed by JUL system. | | |
| | OSI | Other service information | | |
| | | Only for compatibility with SMDG proposal. It will not be processed by JUL system. | | |
| | PAC | Packing/marketing information | | |
| | | In case of general cargo shipment (EQD:8053 = 'BB') the occurrence of the segment with this qualifier is to provide information on the number of volumes. | | |
| | SIN | Special instructions | | |
| | | Only for compatibility with SMDG proposal. It will not be processed by JUL system. | | |
| | WHI | Warehouse instruction/information | | |
| 4453 | | FREE TEXT FUNCTION CODE | C 1 an..3 | X |
| C107 | | TEXT REFERENCE | C 1 | D |
| | | Coded reference to a standard text and its source. | | |
| | | Usage complemented in local document if mentioned in that document. | | |

| | | | | | |
|-------------|------------------------------|--|----------|----------------|----------|
| | Not used if DE:4451 = 'CUS'. | | | | |
| | 4441 | Free text description code | M | an..17 | M |
| | | Code specifying free form text. | | | |
| | | DRF Reference to weightig equipment certificate (SM1) or method certification (SM2) | | | |
| | | SM1 SOLAS Method 1 | | | |
| | | SM2 SOLAS Method 2 | | | |
| | 1131 | Code list identification code | C | an..17 | O |
| | | Code identifying a user or association maintained code list. | | | |
| | | ZZZ Mutually defined | | | |
| | 3055 | Code list responsible agency code | C | an..3 | O |
| | | Code specifying the agency responsible for a code list. | | | |
| | | Only for compatibility with SMDG proposal. It will not be processed by JUL system. | | | |
| | | Refer to D.16A Data Element Dictionary for acceptable code values. | | | |
| C108 | | TEXT LITERAL | C | 1 | R |
| | | Free text; one to five lines. | | | |
| | 4440 | Free text | M | an..512 | M |
| | | Free form text. | | | |
| | | If DE:4451 = 'CUS' this element should have 'C' for EU goods, or 'NC' for non-EU goods. | | | |
| | | If DE:4441 in {'SM1', 'SM2'} this element should contain the reference of the certificate for ascertainment of VGM according to method 1 or 2. | | | |
| | | If DE:4441 = 'DRF' this element should contain the reference to weighting equipment certificate (SM1) or method certification (SM2). | | | |
| | | If DE:4451 = 'PAC' this element should contain the number of volumes of a general cargo shipment. | | | |
| | | If DE:4451 = 'ACB' this element contains the nature of cargo according to Annex II - Eurostat Maritime Transport Directive. | | | |
| | | <i>If DE:4451 = 'PAC' this element will placed in "Number Of Packages" in SeaWarehouseKeeperCargoReport.</i> | | | |
| | | <i>If DE:4451 = 'ACB' the code value, added with a 0 (zero) on the left side if total size is less than 3 characters, will be used in element "Cargo Type" in message SeaWarehouseKeeperCargoReport.</i> | | | |
| | | <i>If DE:4451 = 'WHI' the value in this element will be placed in element "Action" in element "Item".</i> | | | |
| | 4440 | Free text | C | an..512 | O |

Free form text.

If DE:4451 = 'PAC' this element will contain the type of volumes according to UN/ECE Recommendation 21 - Code for Types of Cargo, Packages and Packing Materials, Annex V and Annex VI.

If DE:4451 = 'PAC' this element will placed in "Nature Of Volumes" in SeaWarehouseKeeperCargoReport.

| | | | | |
|-------------|------------------------------|----------|----------------|----------|
| 4440 | Free text | C | an..512 | O |
| | Free form text. | | | |
| 4440 | Free text | C | an..512 | O |
| | Free form text. | | | |
| 4440 | Free text | C | an..512 | O |
| | Free form text. | | | |
| 3453 | LANGUAGE NAME CODE | C | 1 an..3 | X |
| 4447 | FREE TEXT FORMAT CODE | C | 1 an..3 | X |

Group: **DGS** Segment Group 8: Dangerous Goods
Position: 00360
Group: Segment Group 6 (Equipment Details) Mandatory
Level: 2
Usage: Conditional (Optional)
Max Use: 99
Purpose: A group of segment to specify dangerous goods details.
Notes: The group is just used to declare the presence of dangerous goods.
 However the data provided will be kept.

Segment Summary

| | Pos. | Seg. | | Req. | Max. | Group: |
|---|-------------------|------------------|--------------------------------------|--------------------|-------------------|----------------------|
| | <u>No.</u> | <u>ID</u> | <u>Name</u> | <u>Des.</u> | <u>Use</u> | <u>Repeat</u> |
| M | 00370 | DGS | Dangerous Goods | M | 1 | |
| O | 00380 | FTX | Free Text | C | 9 | |
| | 00400 | | Segment Group 9: Contact Information | C | | 9 |

Segment: **DGS** Dangerous Goods
Position: 00370 (Trigger Segment)
Group: Segment Group 8 (Dangerous Goods) Conditional (Optional)
Level: 2
Usage: Mandatory
Max Use: 1
Purpose: A segment to identify the UN-number and the class of the dangerous goods loaded in the container.

Dependency Notes:**Semantic Notes:****Comments:**

Notes: Usage complemented in local document if mentioned in that document.

Example: Goods with IMDG code 6.1, with UNDG 3253.

DGS+IMD+6.1+3253'

Data Element Summary

| <u>Data Element</u> | <u>Component Element</u> | <u>Name</u> | <u>Base Attributes</u> | | | <u>User Attributes</u> |
|--|--------------------------|---|------------------------|---|--------|------------------------|
| 8273 | | DANGEROUS GOODS REGULATIONS CODE Code specifying a dangerous goods regulation. IMD IMO IMDG code | C | 1 | an..3 | R |
| C205 | | HAZARD CODE The identification of the dangerous goods in code. | C | 1 | | R |
| | 8351 | Hazard identification code Code identifying a hazard. IMDG class / sub-class number. | M | | an..7 | M |
| <i>The value will be used to identify the value to use in "Dangerous Goods" element.</i> | | | | | | |
| <i>If the value in C205:8351 is present, then the value is "Yes". Otherwise is "No".</i> | | | | | | |
| | 8078 | Additional hazard classification identifier To identify an additional hazard classification. Only for compatibility with SMDG proposal. It will not be processed by JUL system. | C | | an..7 | O |
| | 8092 | Hazard code version identifier To identify the version number of a hazard code. Only for compatibility with SMDG proposal. It will not be processed by JUL system. | C | | an..10 | O |
| C234 | | UNDG INFORMATION Information on dangerous goods, taken from the United Nations Dangerous Goods classification. Usage complemented in local document if mentioned in that document. | C | 1 | | O |

| | | | | | |
|-------------|-------------|--|----------|-----------------|----------|
| | 7124 | United Nations Dangerous Goods (UNDG) identifier | C | n4 | O |
| | | The unique serial number assigned within the United Nations to substances and articles contained in a list of the dangerous goods most commonly carried. | | | |
| | | UNDG number | | | |
| | 7088 | Dangerous goods flashpoint description | C | an..8 | X |
| C223 | | DANGEROUS GOODS SHIPMENT FLASHPOINT | C | 1 | O |
| | | Temperature at which a vapor can be ignited as per ISO 1523/73. Only for compatibility with SMDG proposal. It will not be processed by JUL system. | | | |
| | 7106 | Shipment flashpoint degree | C | n3 | O |
| | | To specify the value of the flashpoint of a shipment. | | | |
| | 6411 | Measurement unit code | C | an..8 | O |
| | | Code specifying the unit of measurement. | | | |
| 8339 | | PACKAGING DANGER LEVEL CODE | C | 1 an..3 | O |
| | | Code specifying the level of danger for which the packaging must cater. | | | |
| | | 1 Great danger | | | |
| | | 2 Medium danger | | | |
| | | 3 Minor danger | | | |
| 8364 | | EMERGENCY PROCEDURE FOR SHIPS IDENTIFIER | C | 1 an..8 | O |
| | | To identify the emergency procedure number for ships transporting dangerous goods. Synonym: EMS Number. Only for compatibility with SMDG proposal. It will not be processed by JUL system. | | | |
| 8410 | | HAZARD MEDICAL FIRST AID GUIDE IDENTIFIER | C | 1 an..4 | O |
| | | To identify a Medical First Aid Guide (MFAG) for hazardous goods. Only for compatibility with SMDG proposal. It will not be processed by JUL system. | | | |
| 8126 | | TRANSPORT EMERGENCY CARD IDENTIFIER | C | 1 an..10 | O |
| | | To identify a transport emergency (TREM) card. Only for compatibility with SMDG proposal. It will not be processed by JUL system. | | | |
| C235 | | HAZARD IDENTIFICATION PLACARD DETAILS | C | 1 | O |
| | | These numbers appear on the hazard identification placard required on the means of transport. Only for compatibility with SMDG proposal. It will not be processed by JUL system. | | | |
| | 8158 | Orange hazard placard upper part identifier | C | an..4 | O |
| | | To specify the identity number for the upper part of the orange hazard placard | | | |

| | | | | | |
|-------------|-------------|--|----------|----------------|----------|
| | | required on the means of transport. | | | |
| | 8186 | Orange hazard placard lower part identifier | C | an4 | O |
| | | To specify the identity number for the lower part of the orange hazard placard required on the means of transport. | | | |
| C236 | | DANGEROUS GOODS LABEL | C | 1 | O |
| | | Markings identifying the type of hazardous goods and similar information. <i>Only for compatibility with SMDG proposal. It will not be processed by JUL system.</i> | | | |
| | 8246 | Dangerous goods marking identifier | C | an..4 | O |
| | | To identify the marking of dangerous goods. | | | |
| | 8246 | Dangerous goods marking identifier | C | an..4 | O |
| | | To identify the marking of dangerous goods. | | | |
| | 8246 | Dangerous goods marking identifier | C | an..4 | O |
| | | To identify the marking of dangerous goods. | | | |
| | 8246 | Dangerous goods marking identifier | C | an..4 | O |
| | | To identify the marking of dangerous goods. | | | |
| 8255 | | PACKING INSTRUCTION TYPE CODE | C | 1 an..3 | X |
| 8179 | | TRANSPORT MEANS DESCRIPTION CODE | C | 1 an..8 | X |
| 8211 | | HAZARDOUS CARGO TRANSPORT AUTHORITY CODE | C | 1 an..3 | X |
| C289 | | TUNNEL RESTRICTION | C | 1 | X |
| | | To specify a restriction for transport through tunnels. | | | |
| | 8461 | Tunnel Restriction Code | C | an..6 | X |
| | | A code indicating a restriction for transport through tunnels. | | | |
| | 1131 | Code list identification code | C | an..17 | X |
| | | Code identifying a user or association maintained code list. | | | |
| | 3055 | Code list responsible agency code | C | an..3 | X |
| | | Code specifying the agency responsible for a code list. | | | |

Segment: **FTX** Free Text
Position: 00380
Group: Segment Group 8 (Dangerous Goods) Conditional (Optional)
Level: 3
Usage: Conditional (Optional)
Max Use: 9
Purpose: A segment to give additional information regarding dangerous goods.
Dependency Notes:
Semantic Notes:
Comments:
Notes: Only for compatibility with SMDG proposal. It will not be processed by JUL system.

Data Element Summary

| Data Element | Component Element | Name | Base | | User |
|--------------|-------------------|--|------------|---------|------------|
| | | | Attributes | | Attributes |
| 4451 | | TEXT SUBJECT CODE QUALIFIER Code qualifying the subject of the text. Refer to D.16A Data Element Dictionary for acceptable code values. | M | 1 an..3 | M |
| 4453 | | FREE TEXT FUNCTION CODE | C | 1 an..3 | X |
| C107 | | TEXT REFERENCE Coded reference to a standard text and its source. | C | 1 | O |
| | 4441 | Free text description code Code specifying free form text. | M | an..17 | M |
| | 1131 | Code list identification code | C | an..17 | X |
| | 3055 | Code list responsible agency code | C | an..3 | X |
| C108 | | TEXT LITERAL Free text; one to five lines. | C | 1 | O |
| | 4440 | Free text Free form text. | M | an..512 | M |
| | 4440 | Free text Free form text. | C | an..512 | O |
| | 4440 | Free text Free form text. | C | an..512 | O |
| | 4440 | Free text Free form text. | C | an..512 | O |
| | 4440 | Free text Free form text. | C | an..512 | O |
| 3453 | | LANGUAGE NAME CODE | C | 1 an..3 | X |
| 4447 | | FREE TEXT FORMAT CODE | C | 1 an..3 | X |

Group: **CTA** Segment Group 9: Contact Information
Position: 00400
Group: Segment Group 8 (Dangerous Goods) Conditional (Optional)
Level: 3
Usage: Conditional (Optional)
Max Use: 9
Purpose: A group of segments to specify contact information.
Notes: Only for compatibility with SMDG proposal. It will not be processed by JUL system.

Segment Summary

| | Pos. | Seg. | | Req. | Max. | Group: |
|---|-------------------|------------------|-----------------------|--------------------|-------------------|----------------------|
| | <u>No.</u> | <u>ID</u> | <u>Name</u> | <u>Des.</u> | <u>Use</u> | <u>Repeat</u> |
| M | 00410 | CTA | Contact Information | M | 1 | |
| O | 00420 | COM | Communication Contact | C | 9 | |

Segment: **CTA Contact Information**
Position: 00410 (Trigger Segment)
Group: Segment Group 9 (Contact Information) Conditional (Optional)
Level: 3
Usage: Mandatory
Max Use: 1
Purpose: A segment to identify a person or department to be contacted regarding dangerous goods.

Dependency Notes:**Semantic Notes:****Comments:**

Notes: Only for compatibility with SMDG proposal. It will not be processed by JUL system.

Data Element Summary

| Data Element | Component Element | Name | Base Attributes | User Attributes |
|---------------------|--------------------------|--|------------------------|------------------------|
| 3139 | | CONTACT FUNCTION CODE | C 1 an..3 | O |
| | | Code specifying the function of a contact (e.g. department or person). Refer to D.16A Data Element Dictionary for acceptable code values. | | |
| C056 | | CONTACT DETAILS | C 1 | O |
| | | Code and/or name of a contact such as a department or employee. Code preferred. | | |
| | 3413 | Contact identifier | C an..17 | X |
| | 3412 | Contact name | C an..256 | O |
| | | Name of a contact, such as a department or employee. | | |

Segment: **COM** **Communication Contact**
Position: 00420
Group: Segment Group 9 (Contact Information) Conditional (Optional)
Level: 4
Usage: Conditional (Optional)
Max Use: 9
Purpose: A segment to specify communication details of the dangerous goods contact.
Dependency Notes:
Semantic Notes:
Comments:
Notes: Only for compatibility with SMDG proposal. It will not be processed by JUL system.

Data Element Summary

| <u>Data Element</u> | <u>Component Element</u> | <u>Name</u> | <u>Base Attributes</u> | | <u>User Attributes</u> |
|---------------------|--------------------------|--|------------------------|---------|------------------------|
| C076 | | COMMUNICATION CONTACT | M | 3 | M |
| | | Communication number of a department or employee in a specified channel. | | | |
| | 3148 | Communication address identifier | M | an..512 | M |
| | | To identify a communication address. | | | |
| | 3155 | Communication means type code | M | an..3 | M |
| | | Code specifying the type of communication address. | | | |
| | | Refer to D.16A Data Element Dictionary for acceptable code values. | | | |

Segment: **EQA** Attached Equipment
Position: 00430
Group: Segment Group 6 (Equipment Details) Mandatory
Level: 2
Usage: Conditional (Optional)
Max Use: 9
Purpose: A segment to identify clip-on units, such as: - generator sets
Dependency Notes:
Semantic Notes:
Comments:
Notes: Only for compatibility with SMDG proposal. It will not be processed by JUL system.

Data Element Summary

| <u>Data Element</u> | <u>Component Element</u> | <u>Name</u> | <u>Base Attributes</u> | | <u>User Attributes</u> |
|---------------------|--------------------------|--|------------------------|---------|------------------------|
| 8053 | | EQUIPMENT TYPE CODE QUALIFIER Code qualifying a type of equipment. Refer to D.16A Data Element Dictionary for acceptable code values. | M | 1 an..3 | M |
| C237 | | EQUIPMENT IDENTIFICATION Marks (letters/numbers) identifying equipment. | C | 1 | O |
| | 8260 | Equipment identifier To identify equipment. | C | an..17 | O |
| | 1131 | Code list identification code | C | an..17 | X |
| | 3055 | Code list responsible agency code | C | an..3 | X |
| | 3207 | Country identifier | C | an..3 | X |

Segment: **HAN** Handling Instructions
Position: 00440
Group: Segment Group 6 (Equipment Details) Mandatory
Level: 2
Usage: Conditional (Optional)
Max Use: 9
Purpose: A segment to specify handling instructions related to the container equipment.

Dependency Notes:**Semantic Notes:****Comments:**

Notes: Usage complemented in local document if mentioned in that document.

To be used if the message is a Transport Discharge Instruction (BGM:1001 = '118').

This segment is used to specify additional requirements related with the handling of the transport equipment. The instructions are given by the code in DE:4079. As several instructions may be given, the segment can occur several times.

If it is 'DIL' or 'DIT' it means that the transport equipment will leave port by rail or by truck respectively.

If it is 'RCT' it means the transport equipment requires to be connected to electric power network. Alternatively this requirement can be expressed by sending SG8(TMP) group.

If it is 'SQ' or 'UQ' means that an operation of stuff or unstuff is needed to be performed.

Example: Equipment will be unstuffed on quay.

HAN+UQ'

Example: Equipment needs electric power.

HAN+RCT'

Data Element Summary

| Data Element | Component Element | Name | Base Attributes | | User Attributes |
|---------------------|--------------------------|---|------------------------|--------------|------------------------|
| C524 | | HANDLING INSTRUCTIONS | C | 1 | O |
| | | Instruction for the handling of goods, products or articles in shipment, storage etc. | | | |
| | 4079 | Handling instruction description code | C | an..3 | O |
| | | Code specifying a handling instruction. | | | |

Based on the code proposed by ITIGG in the document "CODES FOR USE IN THE FREE TEXT (FTX) SEGMENT OF THE UN/EDIFACT CONTAINER MESSAGES", reference JM4/ITIGG/120/v.17, version 1.7 - August 2015, Additions by SMDG

'Container Messages' subgroup.

The value will be used in "Handling Instructions" element following the below correspondence.

If C524.4079 = 'RCT' then the value is "ElectricOrTemperature".

If C524.4079 = 'SQ' then the value is "Consolidate".

If C524.4079 = 'UQ' then the value is "Deconsolidate".

If C524.4079 = 'DIL' then the value is "Rail".

If C524.4079 = 'DIT' then the value is "Truck".

DIL Discharge onto rail

Use value "Railway".

DIT Discharge onto truck

Use value "Truck".

RCT Connect to electric mains & control temperature

Use value "ElectricOrTemperature".

SQ Stuff on quay

Use value "Consolidate".

UQ Unstuff on quay

Use value "Deconsolidate".

| | | | | |
|-------------|---|----------|----------------|----------|
| 1131 | Code list identification code | C | an..17 | O |
| | Code identifying a user or association maintained code list. | | | |
| | <i>Only for compatibility with SMDG proposal. It will not be processed by JUL system.</i> | | | |
| 3055 | Code list responsible agency code | C | an..3 | O |
| | Code specifying the agency responsible for a code list. | | | |
| | <i>Only for compatibility with SMDG proposal. It will not be processed by JUL system.</i> | | | |
| | Refer to D.16A Data Element Dictionary for acceptable code values. | | | |
| 4078 | Handling instruction description | C | an..512 | O |
| | Free form description of a handling instruction. | | | |

Only for compatibility with SMDG proposal. It will not be processed by JUL system.

| | | | | |
|-------------|--|----------|---------------|----------|
| C218 | HAZARDOUS MATERIAL | C | 1 | X |
| | To specify a hazardous material. | | | |
| 7419 | Hazardous material category name code | C | an..7 | X |
| | Code specifying a kind of hazard for a material. | | | |
| 1131 | Code list identification code | C | an..17 | X |
| | Code identifying a user or association maintained code list. | | | |
| 3055 | Code list responsible agency code | C | an..3 | X |
| | Code specifying the agency responsible for a code list. | | | |
| 7418 | Hazardous material category name | C | an..35 | X |
| | Name of a kind of hazard for a material. | | | |

Group: **TDT** Segment Group 10: Transport Information
Position: 00450
Group: Segment Group 6 (Equipment Details) Mandatory
Level: 2
Usage: Conditional (Optional)
Max Use: 2
Purpose: A group of segments to specify the planned on-carriage details in case this message is a discharge order message.
Notes: Usage complemented in local document if mentioned in that document.

In some situations, for purpose planning it is useful to make a reference to a future voyage or call of a means of transport. This group fills this requirement allowing the reference to on or two ahead voyages or calls in relation to the call identified in SG2.

Segment Summary

| | Pos. | Seg. | | Req. | Max. | Group: |
|---|-------------|-------------|---|-------------|-------------|---------------|
| | No. | ID | Name | Des. | Use | Repeat |
| M | 00460 | TDT | Transport Information | M | 1 | |
| O | 00470 | DTM | Date/Time/Period | C | 9 | |
| O | 00480 | RFF | Reference | C | 3 | |
| | 00490 | | Segment Group 11: Place/Location Identification | C | | 9 |

Segment: **TDT** **Transport Information**
Position: 00460 (Trigger Segment)
Group: Segment Group 10 (Transport Information) Conditional (Optional)
Level: 2
Usage: Mandatory
Max Use: 1
Purpose: A segment identifying the on-carriage transport details of the mode, means of transport by which the container will depart after being discharged.

Dependency Notes:**Semantic Notes:****Comments:**

Notes: Usage complemented in local document if mentioned in that document.

Example: The transport equipment will leave the port in ocean vessel operated by MSC and identified by call sign VRLC2 during voyage NZ623A

TDT+30+NZ623A+1+13+MSC+++VRLC2:103'

Data Element Summary

| <u>Data Element</u> | <u>Component Element</u> | <u>Name</u> | <u>Base Attributes</u> | <u>User Attributes</u> |
|---------------------|--------------------------|---|------------------------|------------------------|
| 8051 | | TRANSPORT STAGE CODE QUALIFIER | M 1 an..3 | M |
| | | Code qualifying a specific stage of transport. | | |
| | 1 | Inland transport <i>Only for compatibility with SMDG proposal. It will not be processed by JUL system.</i> | | |
| | 10 | Pre-carriage transport <i>Only for compatibility with SMDG proposal. It will not be processed by JUL system.</i> | | |
| | 28 | Second on-carriage transport | | |
| | 30 | On-carriage transport | | |
| 8028 | | MEANS OF TRANSPORT JOURNEY IDENTIFIER | C 1 an..17 | O |
| | | To identify a journey of a means of transport. | | |
| | | Usage complemented in local document if mentioned in that document. | | |
| | | This reference should be equal to the value placed in the Notice of Arrival or Notice of Departure. | | |
| C220 | | MODE OF TRANSPORT | C 1 | R |
| | | Method of transport code or name. Code preferred. | | |
| | 8067 | Transport mode name code | C an..3 | R |
| | | Code specifying the name of a mode of transport. | | |
| | | UN Recommendation 19 - Code for Modes of Transport. | | |
| | 1 | Maritime | | |
| | 2 | Rail | | |

| | | | | | |
|------|------|--|--------------------|--------|--|
| | | | | | Only for compatibility with SMDG proposal. It will not be processed by JUL system. |
| | 3 | Road | | | |
| | | | | | Only for compatibility with SMDG proposal. It will not be processed by JUL system. |
| | 4 | Air | | | |
| | | | | | Only for compatibility with SMDG proposal. It will not be processed by JUL system. |
| | 8 | Inland Waterway | | | |
| | | | | | Only for compatibility with SMDG proposal. It will not be processed by JUL system. |
| | 9 | Mode unknown | | | |
| | | | | | Only for compatibility with SMDG proposal. It will not be processed by JUL system. |
| C001 | 8066 | Transport mode name | C | an..17 | X |
| | | TRANSPORT MEANS | C | 1 | O |
| | | Code and/or name identifying the type of means of transport. | | | |
| | | Only for compatibility with SMDG proposal. It will not be processed by JUL system. | | | |
| | 8179 | Transport means description code | C | an..8 | O |
| | | Code specifying the means of transport. | | | |
| | | UN Recommendation 28 - Code for Types of Means of Transport. | | | |
| | 1131 | Code list identification code | C | an..17 | O |
| | | Code identifying a user or association maintained code list. | | | |
| | 3055 | Code list responsible agency code | C | an..3 | O |
| | | Code specifying the agency responsible for a code list. | | | |
| | | Refer to D.16A Data Element Dictionary for acceptable code values. | | | |
| | 8178 | Transport means description | C | an..17 | O |
| | | Free form description of the means of transport. | | | |
| C040 | | CARRIER | C | 1 | O |
| | | Identification of a carrier by code and/or by name. Code preferred. | | | |
| | | Usage complemented in local document if mentioned in that document. | | | |
| | | 3127 | Carrier identifier | C | an..17 |
| | | To identify a carrier. | | | |
| | | Vessel operator's code. | | | |
| | 1131 | Code list identification code | C | an..17 | O |
| | | Code identifying a user or association maintained code list. | | | |
| | | 172 Carriers | | | |
| | 3055 | Code list responsible agency code | C | an..3 | O |
| | | Code specifying the agency responsible for a code list. | | | |
| | | Only for compatibility with SMDG proposal. It will not be processed by JUL system. | | | |
| | | Refer to D.16A Data Element Dictionary for acceptable code values. | | | |
| | 3126 | Carrier name | C | an..35 | O |

| | | | | | |
|------|---|--|---|--------|---|
| | Name of a carrier. | | | | |
| | Only for compatibility with SMDG proposal. It will not be processed by JUL system. | | | | |
| 8101 | TRANSIT DIRECTION INDICATOR CODE | C | 1 | an..3 | X |
| C401 | EXCESS TRANSPORTATION INFORMATION | C | 1 | | X |
| | To provide details of reason for, and responsibility for, use of transportation other than normally utilized. | | | | |
| 8457 | Excess transportation reason code | M | | an..3 | X |
| | Code specifying the reason for excess transportation. | | | | |
| 8459 | Excess transportation responsibility code | M | | an..3 | X |
| | Code specifying the responsibility for excess transportation. | | | | |
| 7130 | Customer shipment authorisation identifier | C | | an..17 | X |
| | To identify the authorisation to ship issued by the customer. | | | | |
| C222 | TRANSPORT IDENTIFICATION | C | 1 | | O |
| | Code and/or name identifying the means of transport. | | | | |
| | Usage complemented in local document if mentioned in that document. | | | | |
| 8213 | Transport means identification name identifier | C | | an..35 | R |
| | Identifies the name of the transport means. | | | | |
| 1131 | Code list identification code | C | | an..17 | O |
| | Code identifying a user or association maintained code list. | | | | |
| | 103 | Call sign directory | | | |
| | 146 | Means of transport identification | | | |
| 3055 | Code list responsible agency code | C | | an..3 | O |
| | Code specifying the agency responsible for a code list. | | | | |
| | 11 | Lloyd's register of shipping | | | |
| | | Only for compatibility with SMDG proposal. It will not be processed by JUL system. | | | |
| | 54 | IMO (International Maritime Organisation) | | | |
| | ZZZ | Mutually defined | | | |
| | | Only for compatibility with SMDG proposal. It will not be processed by JUL system. | | | |
| 8212 | Transport means identification name | C | | an..70 | O |
| | Name identifying a means of transport. | | | | |
| 8453 | Transport means nationality code | C | | an..3 | O |
| | Code specifying the nationality of a means of transport. | | | | |
| | Flag of Means of Transport (ISO country code, 2-alpha). | | | | |
| 8281 | TRANSPORT MEANS OWNERSHIP INDICATOR CODE | C | 1 | an..3 | X |
| C003 | POWER TYPE | C | 1 | | X |
| | To specify the type of power. | | | | |
| 7041 | Power type code | C | | an..3 | X |
| | Code indicating the type of power. | | | | |

| | | | | |
|-------------|--|----------|---------------|----------|
| 1131 | Code list identification code | C | an..17 | X |
| | Code identifying a user or association maintained code list. | | | |
| 3055 | Code list responsible agency code | C | an..3 | X |
| | Code specifying the agency responsible for a code list. | | | |
| 7040 | Power type description | C | an..17 | X |
| | Description of the type of power. | | | |

Segment: **DTM** Date/Time/Period
Position: 00470
Group: Segment Group 10 (Transport Information) Conditional (Optional)
Level: 3
Usage: Conditional (Optional)
Max Use: 9
Purpose: A segment to specify the date(s) and time(s) related to the on-carriage transport.
Dependency Notes:
Semantic Notes:
Comments:
Notes: Only for compatibility with SMDG proposal. It will not be processed by JUL system.

Data Element Summary

| Data Element | Component Element | Name | Base | | User |
|-----------------|----------------------|---|------------|--------|------------|
| | | | Attributes | | Attributes |
| C507 | | DATE/TIME/PERIOD | M | 1 | M |
| | | Date and/or time, or period relevant to the specified date/time/period type. | | | |
| | 2005 | Date or time or period function code qualifier | M | an..3 | M |
| | | Code qualifying the function of a date, time or period. Refer to D.16A Data Element Dictionary for acceptable code values. | | | |
| | 2380 | Date or time or period text | C | an..35 | O |
| | | The value of a date, a date and time, a time or of a period in a specified representation. | | | |
| | 2379 | Date or time or period format code | C | an..3 | O |
| | | Code specifying the representation of a date, time or period. Refer to D.16A Data Element Dictionary for acceptable code values. | | | |

Segment: **RFF** Reference
Position: 00480
Group: Segment Group 10 (Transport Information) Conditional (Optional)
Level: 3
Usage: Conditional (Optional)
Max Use: 3
Purpose: A segment identifying a relevant reference number, such as: - shipping line -
 syndicate - marketing organization - conference code

Dependency Notes:**Semantic Notes:****Comments:**

Notes: Usage complemented in local document if mentioned in that document.

Although this segment is marked as optional, in the JUL implementation this is the preferred way to identify a visit id (vessel call). The usage is to put this id in DE:1154 associated with qualifier 'ATZ' in 1153. This identification is provided by the JUL system.

Example: Leixões visit id PTLEI119003021

RFF+ATZ:PTLEI119003021'

Example: Additional voyage number 254

RFF+VON:254'

Data Element Summary

| <u>Data Element</u> | <u>Component Element</u> | <u>Name</u> | <u>Base Attributes</u> | | <u>User Attributes</u> |
|---------------------|--------------------------|---|------------------------|--------|------------------------|
| C506 | | REFERENCE Identification of a reference. | M | 1 | M |
| | 1153 | Reference code qualifier Code qualifying a reference. ATZ Ship's stay reference number VM Vessel identifier VON Voyage number | M | an..3 | M |
| | 1154 | Reference identifier Identifies a reference. Visit id, if C506:1153 = 'ATZ'. Alternative (non vessel operator's) voyage number (if C506:1153 = 'VON') as present in the Port Authority System. Callsign, if C506:1152 = 'VM' | C | an..70 | R |
| | 1156 | Document line identifier | C | an..6 | X |

| | | | | |
|-------------|----------------------------|----------|--------------|----------|
| 1056 | Version identifier | C | an..9 | X |
| 1060 | Revision identifier | C | an..6 | X |

Group: **LOC** Segment Group 11: Place/Location Identification
Position: 00490
Group: Segment Group 10 (Transport Information) Conditional (Optional)
Level: 3
Usage: Conditional (Optional)
Max Use: 9
Purpose: A group of segments to specify locations related to the on- carriage transport.
Notes: Only for compatibility with SMDG proposal. It will not be processed by JUL system.

Segment Summary

| | Pos. | Seg. | | Req. | Max. | Group: |
|---|-------------------|------------------|-------------------------------|--------------------|-------------------|----------------------|
| | <u>No.</u> | <u>ID</u> | <u>Name</u> | <u>Des.</u> | <u>Use</u> | <u>Repeat</u> |
| M | 00500 | LOC | Place/Location Identification | M | 1 | |

Segment: **LOC** Place/Location Identification
Position: 00500 (Trigger Segment)
Group: Segment Group 11 (Place/Location Identification) Conditional (Optional)
Level: 3
Usage: Mandatory
Max Use: 1
Purpose: A segment identifying locations related to the transport details, such as: - place of departure

Dependency Notes:**Semantic Notes:****Comments:**

Notes: Only for compatibility with SMDG proposal. It will not be processed by JUL system.

Data Element Summary

| <u>Data Element</u> | <u>Component Element</u> | <u>Name</u> | <u>Base Attributes</u> | | <u>User Attributes</u> |
|---------------------|--------------------------|---|------------------------|---------|------------------------|
| 3227 | | LOCATION FUNCTION CODE QUALIFIER Code identifying the function of a location. Refer to D.16A Data Element Dictionary for acceptable code values. | M | 1 an..3 | M |
| C517 | | LOCATION IDENTIFICATION Identification of a location by code or name. | C | 1 | O |
| | 3225 | Location identifier To identify a location. | C | an..35 | O |
| | 1131 | Code list identification code Code identifying a user or association maintained code list. | C | an..17 | O |
| | 3055 | Code list responsible agency code Code specifying the agency responsible for a code list. Refer to D.16A Data Element Dictionary for acceptable code values. | C | an..3 | O |
| | 3224 | Location name Name of the location. | C | an..256 | O |
| C519 | | RELATED LOCATION ONE IDENTIFICATION Identification the first related location by code or name. | C | 1 | O |
| | 3223 | First related location identifier To identify a first related location. | C | an..35 | O |
| | 1131 | Code list identification code Code identifying a user or association maintained code list. | C | an..17 | O |
| | 3055 | Code list responsible agency code Code specifying the agency responsible for a code list. Refer to D.16A Data Element Dictionary for acceptable code values. | C | an..3 | O |
| | 3222 | First related location name Name of first related location. | C | an..70 | O |

| | | | | |
|-------------|---|----------|----------------|----------|
| C553 | RELATED LOCATION TWO IDENTIFICATION | C | 1 | O |
| | Identification of second related location by code or name. | | | |
| 3233 | Second related location identifier | C | an..35 | O |
| | To identify a second related location. | | | |
| 1131 | Code list identification code | C | an..17 | O |
| | Code identifying a user or association maintained code list. | | | |
| 3055 | Code list responsible agency code | C | an..3 | O |
| | Code specifying the agency responsible for a code list. Refer to D.16A Data Element Dictionary for acceptable code values. | | | |
| 3232 | Second related location name | C | an..70 | O |
| | Name of the second related location. | | | |
| 5479 | RELATION CODE | C | 1 an..3 | O |
| | Code specifying a relation. | | | |

Segment: **NAD** Name and Address
Position: 00520
Group: Segment Group 6 (Equipment Details) Mandatory
Level: 2
Usage: Conditional (Optional)
Max Use: 6
Purpose: A segment to specify a related address or party, such as: - container operator
Dependency Notes:
Semantic Notes:
Comments:
Notes: Usage complemented in local document if mentioned in that document.

This segment is used to specify the Shipping Agent that is responsible for the equipment in the call, whenever it is responsible by the vessel call or not. In this case DE:3035 is 'AG'.

It is also used to specify the the entities related with SOLAS convention. In this case DE:3035 in {'AM', 'SPC', 'WPA'}.

Other usage is to identify the party operating an installation at the location identified in SG13:LOC. In this case NAD:3035 = 'JC' if goods are be placed at the location, or NAD:3035 = 'JB' if goods are to be picked from the location. This usage is the preferred way cope with some situations, when the code in SG13:LOC:C517:3225 is not sufficient to identify the location for deliver or reception of goods, due to the lack of detail inherent to the reference code.

Example: Equipment responsible agent identified by EORI PT556734947.

NAD+AG+PT556734947:167:155'

Example: Authorised person signing for verified gross mass is Julio Silvestre.

NAD+AM+++JULIO SILVESTRE'

Data Element Summary

| <u>Data Element</u> | <u>Component Element</u> | <u>Name</u> | <u>Base Attributes</u> | <u>User Attributes</u> |
|---------------------|--------------------------|---|------------------------|------------------------|
| 3035 | | PARTY FUNCTION CODE QUALIFIER | M 1 an..3 | M |
| | | Code giving specific meaning to a party. | | |
| | AG | Agent | | |
| | | Usage complemented in local document if mentioned in that document. | | |
| | AM | Authorized official | | |
| | | Name in capitals of Authorized person signing for verified gross mass (weight) = EDI signature. | | |
| | CA | Carrier | | |
| | | Only for compatibility with SMDG proposal. It will | | |

| | |
|----|---|
| | not be processed by JUL system. |
| CB | Customs broker Only for compatibility with SMDG proposal. It will not be processed by JUL system. |
| CF | Container operator/lessee Only for compatibility with SMDG proposal. It will not be processed by JUL system. |
| CG | Carrier's agent Only for compatibility with SMDG proposal. It will not be processed by JUL system. |
| CN | Consignee Only for compatibility with SMDG proposal. It will not be processed by JUL system. |
| CZ | Consignor Only for compatibility with SMDG proposal. It will not be processed by JUL system. |
| EQ | Empty container responsible party Only for compatibility with SMDG proposal. It will not be processed by JUL system. |
| FP | Freight/charges payer Only for compatibility with SMDG proposal. It will not be processed by JUL system. |
| GA | Road carrier Only for compatibility with SMDG proposal. It will not be processed by JUL system. |
| GT | Rail carrier Only for compatibility with SMDG proposal. It will not be processed by JUL system. |
| HR | Shipping line service Only for compatibility with SMDG proposal. It will not be processed by JUL system. |
| IO | Insurance company Only for compatibility with SMDG proposal. It will not be processed by JUL system. |
| JB | Goods collection party Use this qualifier to identify the party responsible for the terminal delivering the goods for carriage at the location identified in SG6:LOC, when SG6:LOC:3227 = '9'. |
| JC | Party at final place of positioning Use this qualifier to identify the party responsible for terminal receiving the goods from carriage at the location identified in SG6:LOC, when SG6:LOC:3227 in {'7', '11'}. |
| MF | Manufacturer of goods Only for compatibility with SMDG proposal. It will not be processed by JUL system. |
| OG | Owner or lessor's surveyor Only for compatibility with SMDG proposal. It will not be processed by JUL system. |

| | | | | | |
|-------------|--|---|----------|---------------|----------|
| | OH | Lessee's surveyor Only for compatibility with SMDG proposal. It will not be processed by JUL system. | | | |
| | SPC | SOLAS verified gross mass responsible party | | | |
| | ST | Ship to Only for compatibility with SMDG proposal. It will not be processed by JUL system. | | | |
| | WPA | Weighting party | | | |
| C082 | PARTY IDENTIFICATION DETAILS | | C | 1 | O |
| | Identification of a transaction party by code. | | | | |
| | Usage complemented in local document if mentioned in that document. | | | | |
| 3039 | Party identifier | | M | an..35 | M |
| | Code specifying the identity of a party. | | | | |
| 1131 | Code list identification code | | C | an..17 | O |
| | Code identifying a user or association maintained code list. | | | | |
| | 160 | Party identification | | | |
| | 172 | Carriers Only for compatibility with SMDG proposal. It will not be processed by JUL system. | | | |
| 3055 | Code list responsible agency code | | C | an..3 | O |
| | Code specifying the agency responsible for a code list. | | | | |
| | Only for compatibility with SMDG proposal. It will not be processed by JUL system. | | | | |
| | Refer to D.16A Data Element Dictionary for acceptable code values. | | | | |
| C058 | NAME AND ADDRESS | | C | 1 | O |
| | Unstructured name and address: one to five lines. | | | | |
| | Only for compatibility with SMDG proposal. It will not be processed by JUL system. | | | | |
| 3124 | Name and address description | | M | an..35 | M |
| | Free form description of a name and address line. | | | | |
| 3124 | Name and address description | | C | an..35 | O |
| | Free form description of a name and address line. | | | | |
| 3124 | Name and address description | | C | an..35 | O |
| | Free form description of a name and address line. | | | | |
| 3124 | Name and address description | | C | an..35 | O |
| | Free form description of a name and address line. | | | | |
| 3124 | Name and address description | | C | an..35 | O |
| | Free form description of a name and address line. | | | | |
| C080 | PARTY NAME | | C | 1 | D |
| | Identification of a transaction party by name, one to five lines. Party name may be formatted. | | | | |
| | Use if DE:3035 in {'AM', 'SPC', 'WPA'}. | | | | |

| | | | | | |
|-------------|-------------|--|----------|-----------------|--|
| | | | | | Use if DE:3035 in {'JB', 'JC'} and the company id to be used in DE:C082:3039 is unknown. |
| | 3036 | Party name | M | an..70 | M |
| | | Name of a party. | | | |
| | | If DE:3035 = 'AM' then the value is the name in capitals of the person authorized to sign the shipping document declaring a Verified Gross Mass (weight). EDI signature. | | | |
| | | Id DE:3035 in {'SPC', 'WPA'} then the value is the company name of SOLAS verified gross mass responsible party. Company of person signing for Verified Gross Mass. | | | |
| | | If DE:3035 in {'JB', 'JC'} then the value is the company name operating the installation. | | | |
| | 3036 | Party name | C | an..70 | X |
| | 3036 | Party name | C | an..70 | X |
| | 3036 | Party name | C | an..70 | X |
| | 3036 | Party name | C | an..70 | X |
| | 3045 | Party name format code | C | an..3 | X |
| C059 | | STREET | C | 1 | D |
| | | Street address and/or PO Box number in a structured address: one to four lines. | | | |
| | | Use if DE:3035 in {'AM', 'SPC', 'WPA'}. | | | |
| | | Use if DE:3035 in {'JB', 'JC'} and the company id to be used in DE:C082:3039 is unknown. | | | |
| | 3042 | Street and number or post office box identifier | M | an..35 | M |
| | | To identify a street and number and/or Post Office box number. | | | |
| | | If DE:3035 in {'JB', 'JC'} then the value is the company street and number operating the installation. | | | |
| | 3042 | Street and number or post office box identifier | C | an..35 | X |
| | 3042 | Street and number or post office box identifier | C | an..35 | X |
| | 3042 | Street and number or post office box identifier | C | an..35 | X |
| 3164 | | CITY NAME | C | 1 an..35 | D |
| | | Name of a city. | | | |
| | | Use if DE:3035 in {'SPC', 'WPA'}. | | | |
| C819 | | COUNTRY SUBDIVISION DETAILS | C | 1 | O |
| | | To specify a country subdivision, such as state, canton, county, prefecture. | | | |
| | | <i>Only for compatibility with SMDG proposal. It will not be processed by JUL system.</i> | | | |
| | 3229 | Country subdivision identifier | C | an..9 | O |
| | | To identify a country subdivision, such as state, canton, county, prefecture. | | | |
| | 1131 | Code list identification code | C | an..17 | O |
| | | Code identifying a user or association maintained code list. | | | |
| | 3055 | Code list responsible agency code | C | an..3 | O |
| | | Code specifying the agency responsible for a code list. | | | |

Refer to D.16A Data Element Dictionary for acceptable code values.

| | | | | |
|-------------|--|----------|-----------------|----------|
| 3228 | Country subdivision name | C | an..70 | O |
| | Name of a country subdivision, such as state, canton, county, prefecture. | | | |
| 3251 | POSTAL IDENTIFICATION CODE | C | 1 an..17 | O |
| | Code specifying the postal zone or address. | | | |
| | Usage complemented in local document if mentioned in that document. | | | |
| 3207 | COUNTRY IDENTIFIER | C | 1 an..3 | D |
| | Identification of the name of the country or other geographical entity as defined in ISO 3166-1 and UN/ECE Recommendation 3. | | | |
| | ISO Country Code (2-alpha). | | | |
| | Use if DE:3035 in {'SPC', 'WPA'}. | | | |

Segment: **CNT** Control Total
Position: 00530
Group:
Level: 0
Usage: Conditional (Optional)
Max Use: 1
Purpose: A segment to specify the number of containers in the message, explicitly given by the sender.

Dependency Notes:**Semantic Notes:****Comments:**

Notes: This segment provides the total number of equipment reported in this message. In case there are only general cargo shipments mentioned, then send 0 (zero).

Example: The message reports 20 units.

CNT+16:20'

Example: The message reports 3 general cargo shipments.

CNT+16:0'

Data Element Summary

| Data Element | Component Element | Name | Base Attributes | | User Attributes |
|---------------------|--------------------------|---|------------------------|--------------|------------------------|
| C270 | | CONTROL | M | 1 | M |
| | | Control total for checking integrity of a message or part of a message. | | | |
| | 6069 | Control total type code qualifier | M | an..3 | M |
| | | Code qualifying the type of control of hash total. | | | |
| | | 1 Total of line item quantities | | | |
| | | <i>Only for compatibility with SMDG proposal. It will not be processed by JUL system.</i> | | | |
| | | 16 Total number of equipment | | | |
| | 6066 | Control total quantity | M | n..18 | M |
| | | To specify the value of a control quantity. | | | |
| | 6411 | Measurement unit code | C | an..8 | X |

Segment: **UNT** Message Trailer
Position: 00540
Group:
Level: 0
Usage: Mandatory
Max Use: 1
Purpose: A service segment ending a message, giving the total number of segments in the message (including the UNH & UNT) and the control reference number of the message.

Dependency Notes:**Semantic Notes:****Comments:****Notes:** Example: 26 sent segments, message envelope reference "1357924680"

UNT+26+1357924680'

Data Element Summary

| Data Element | Component Element | Name | Base Attributes | | | User Attributes |
|---------------------|--------------------------|---|------------------------|---|--------|------------------------|
| 0074 | | NUMBER OF SEGMENTS IN A MESSAGE | M | 1 | n..6 | M |
| | | Control count of number of segments in a message. | | | | |
| 0062 | | MESSAGE REFERENCE NUMBER | M | 1 | an..14 | M |
| | | Unique message reference assigned by the sender. | | | | |