

# COPINO Container Pre-notification Message

## Introduction:

A message by which an inland carrier notifies of the delivery or pick-up of containers.

This message is part of a total set of container-related messages. These messages serve to facilitate the intermodal handling of containers by streamlining the information exchange. The business scenario for the container messages is clarified in a separate document, called: 'Guide to the scenario of EDIFACT container messages'.

## Notes:

This Message Implementation Guideline (MIG) has been developed by JUL Project Team, in the context of the JUL Portuguese Project ([www.projeto-jul.pt](http://www.projeto-jul.pt)).

In this context, the following items are considered. The document provides the definition of the Pick-UP/Delivery notice message to be used in electronic data interchange with Port Terminals, Logistics Platforms/Dry Ports, cargo operators or their representatives, related with cargo movements in Portuguese ports.

The message is used for inland carriers (rail, road, inland waterways) to inform terminals, depot, logistics platforms, and so on, that the described transport equipment or general cargo shipments are to be delivered or picked-up at an estimated date/time.

This allows a better planning of the operations at the facility to where the notification is being sent, according to the available capacity and the distribution of the demand during the time periods.

Due to the existence of current implementations of this message in some Portuguese ports, the document signals where backward compatibility is relevant. However, new or updated implementations must follow this MIG and shall ignore these specific exceptions.

Additionally to the UN/EDIFACT definition and scope, this MIG is used also applied to general cargo.

This MIG provides guidance to the recommended usage of codes, qualifiers, data elements, composites, segments and groups of segments in the D.16A COPINO. The intention is to assist developers and ensure consistent use of the COPINO message throughout the worldwide trade and transport community.

The MIG was elaborated considering the following references:

- UN/EDIFACT D.16A COPINO
- UN/EDIFACT D.16A Data Element Codes
- ISO 6346, 2nd and 3rd editions, and amendments – Freight containers – Coding, identification and marking
- UN/ECE Recommendation 7 – Numerical Representation of Dates, Time, and Periods of Time
- UN/ECE Recommendation 16 (3rd edition) – UN/LOCODE – Codes for Ports and Other Locations
- UN/ECE Recommendation 19 (2nd edition) – Codes for Modes of Transport
- UN/ECE Recommendation 20 – Codes for Units of Measure Used in International Trade

- ITIGG: General Recommendations Version 2.1 March 2001
- SMDG MIG COPINO Version 2.0

Being based on SMDG MIG does not mean a full adoption of SMDG proposals. In some situations, groups, segments, elements or codes are not applicable. In other situations, groups, segments, elements or codes are included but notes are present to inform the purpose of SMDG proposal compability.

Notes on this matter will be in font Courier New 8pt Bold.

Usage indicators in this MIG follow ITIGG Recommendation D4/G44.

Status Indicators (“M” and “C”) form part of the UN/EDIFACT standard and indicate a minimum requirement to fulfil the needs of the message structure. They are not adequate for implementation purposes. The Status Indicators are:

#### Value Description

##### M Mandatory

The entity marked as such must appear in all messages, and apply to these messages as well as to any associated implementation guidelines (and consequently is also a Usage Indicator).

##### C Conditional

The entity is used by agreement between trading partners.

Usage Indicators are implementation related indicators that further detail the use of “Conditional” Status Indicators. Usage Indicators are applied at all levels of the guidelines and shown adjacent to data items such as segment groups, segments, composite data elements and simple data elements. They dictate the agreed usage of the data items or entities. The Usage Indicators are:

#### Value Description

##### M Mandatory

Indicates the item is mandatory in the UN/EDIFACT message.

##### R Required

Indicates the item must be transmitted in this implementation.

##### D Dependent

Indicates that the use of the item is depending on a well-defined condition or set of conditions. These conditions must be clearly specified in the relevant implementation guideline.

##### O Optional

Indicates that this item is at the need or discretion of both trading partners.

##### X Not Used

Indicates that this item is not to be used in this implementation.

Where an item within a segment group, segment or composite data element is marked with Usage Indicators “M” or “R”, but the segment group, segment or composite data element has been marked “O” or “D” (or for that matter “X”), the item is only to be transmitted when the segment group, segment or composite of which

it is a part, is used.

Examples in the text are just related with the segments where they appear. They are not necessarily related between each other.

### \*\*\* Special Note On General Cargo

The COPINO message was not designed to send delivery/pick-up notifications of general cargo. For this reason, this MIG defines a segments' and elements' usage that supports a mechanism to represent general cargo movements' notifications. This is described in SG11 (EQD) notes.

### \*\*\* Special Note On Local Usage

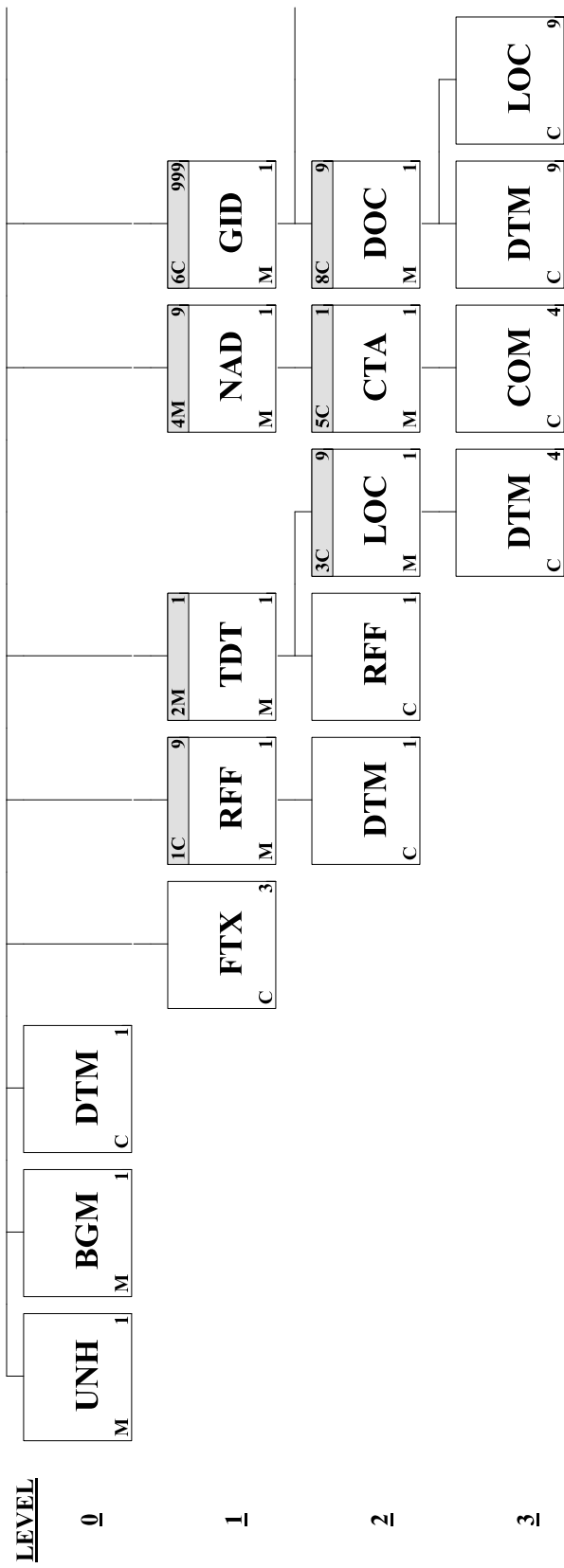
Due to the diverse realities of the Portuguese ports and other logistics facilities, and the stakeholders operating in them, it is necessary to define local rules, codes, etc. But this needs to be done considering the harmonization framework that this document defines.

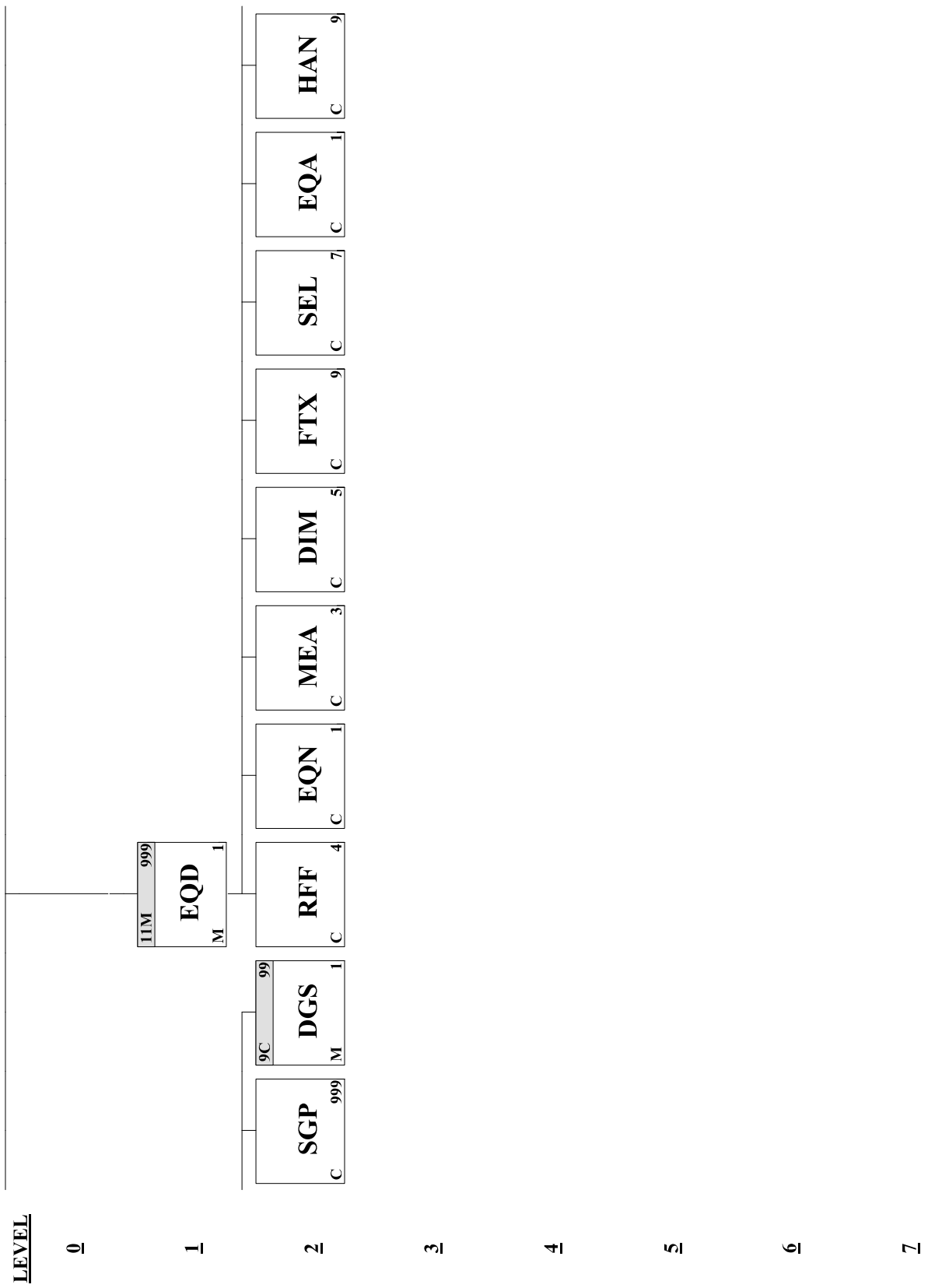
In order to avoid a heavy guideline where all local port specifics are expressed, the approach is to redirect the reader to an external document when applicable. The external document should be elaborated by the each port when justified.

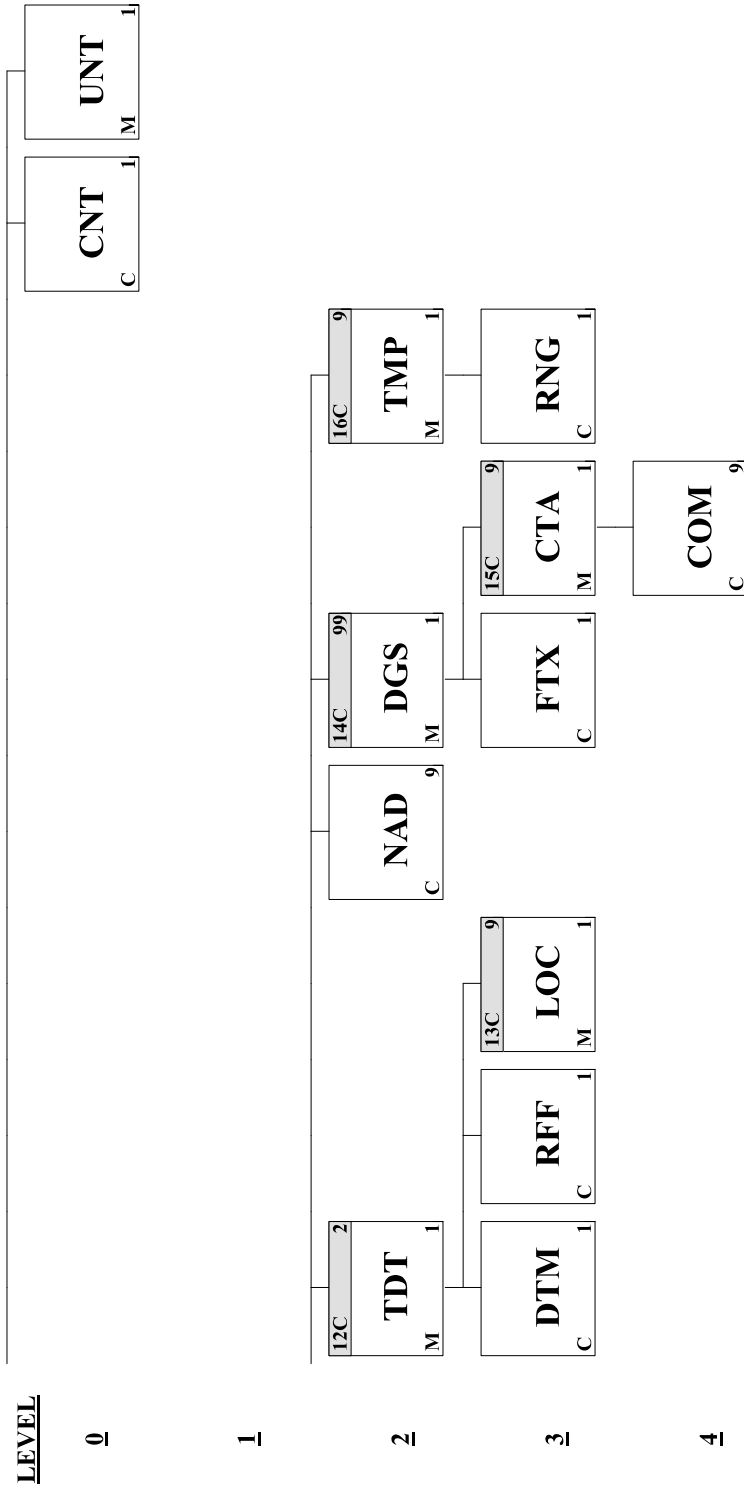
However all stakeholders should have the following in mind. The local specifications are complementary to this document, they are used to document current implementations, and should not be a justification for new or updated implementations avoid the full adoption of this document.

| <u>Page No.</u> | <u>Pos. No.</u> | <u>Seg. ID</u> | <u>Name</u>                      | <u>Base Guide</u> | <u>User Status</u> | <u>Max.Use</u> | <u>Group Repeat</u> | <u>Notes and Comments</u> |
|-----------------|-----------------|----------------|----------------------------------|-------------------|--------------------|----------------|---------------------|---------------------------|
| 8               | 00010           | UNH            | Message Header                   | M                 | M                  | 1              |                     |                           |
| 10              | 00020           | BGM            | Beginning of Message             | M                 | M                  | 1              |                     |                           |
| 12              | 00030           | DTM            | Date/Time/Period                 | C                 | O                  | 1              |                     |                           |
| 13              | 00040           | FTX            | Free Text                        | C                 | O                  | 3              |                     |                           |
|                 | 00050           |                | Segment Group 1: RFF-DTM         | C                 | O                  |                | 9                   |                           |
| 16              | 00060           | RFF            | Reference                        | M                 | M                  | 1              |                     |                           |
| 18              | 00070           | DTM            | Date/Time/Period                 | C                 | O                  | 1              |                     |                           |
|                 | 00080           |                | Segment Group 2: TDT-RFF-SG3     | M                 | M                  |                | 1                   |                           |
| 20              | 00090           | TDT            | Transport Information            | M                 | M                  | 1              |                     |                           |
| 23              | 00110           | RFF            | Reference                        | C                 | O                  | 1              |                     |                           |
|                 | 00120           |                | Segment Group 3: LOC-DTM         | C                 | O                  |                | 9                   |                           |
| 25              | 00130           | LOC            | Place/Location Identification    | M                 | M                  | 1              |                     |                           |
| 28              | 00140           | DTM            | Date/Time/Period                 | C                 | O                  | 4              |                     |                           |
|                 | 00150           |                | Segment Group 4: NAD-SG5         | M                 | M                  |                | 9                   |                           |
| 30              | 00160           | NAD            | Name and Address                 | M                 | M                  | 1              |                     |                           |
|                 | 00170           |                | Segment Group 5: CTA-COM         | C                 | D                  |                | 1                   |                           |
| 35              | 00180           | CTA            | Contact Information              | M                 | M                  | 1              |                     |                           |
| 36              | 00190           | COM            | Communication Contact            | C                 | O                  | 4              |                     |                           |
|                 | 00200           |                | Segment Group 6: GID-SG8-SGP-SG9 | C                 | D                  |                | 999                 |                           |
| 38              | 00210           | GID            | Goods Item Details               | M                 | M                  | 1              |                     |                           |
|                 | 00260           |                | Segment Group 8: DOC-DTM-LOC     | C                 | O                  |                | 9                   |                           |

|     |       |     |  |   |   |     |
|-----|-------|-----|--|---|---|-----|
| 42  | 00270 | DOC | Document/Message Details   | M | M | 1   |
| 44  | 00280 | DTM | Date/Time/Period   | C | O | 9   |
| 45  | 00290 | LOC | Place/Location Identification  | C | O | 9   |
| 47  | 00300 | SGP | Split Goods Placement  | C | O | 999 |
|     | 00310 |     | Segment Group 9: DGS   | C | O | 99  |
| 49  | 00320 | DGS | Dangerous Goods  | M | M | 1   |
|     | 00380 |     | Segment Group 11: EQD-RFF-EQN<br>-MEA-DIM-FTX-SEL-EQA-HAN-SG12<br>-NAD-SG14-SG16 | M | M | 999 |
| 55  | 00390 | EQD | Equipment Details  | M | M | 1   |
| 58  | 00400 | RFF | Reference  | C | O | 4   |
| 62  | 00410 | EQN | Number of Units  | C | O | 1   |
| 63  | 00420 | MEA | Measurements   | C | R | 3   |
| 66  | 00430 | DIM | Dimensions   | C | O | 5   |
| 68  | 00440 | FTX | Free Text  | C | D | 9   |
| 71  | 00460 | SEL | Seal Number  | C | D | 7   |
| 73  | 00470 | EQA | Attached Equipment   | C | D | 1   |
| 75  | 00480 | HAN | Handling Instructions  | C | O | 9   |
|     | 00490 |     | Segment Group 12: TDT-DTM-RFF<br>-SG13   | C | O | 2   |
| 77  | 00500 | TDT | Transport Information  | M | M | 1   |
| 81  | 00510 | DTM | Date/Time/Period   | C | O | 1   |
| 82  | 00520 | RFF | Reference  | C | O | 1   |
|     | 00530 |     | Segment Group 13: LOC  | C | O | 9   |
| 84  | 00540 | LOC | Place/Location Identification  | M | M | 1   |
| 87  | 00560 | NAD | Name and Address   | C | O | 9   |
|     | 00570 |     | Segment Group 14: DGS-FTX-SG15   | C | O | 99  |
| 92  | 00580 | DGS | Dangerous Goods  | M | M | 1   |
| 95  | 00590 | FTX | Free Text  | C | O | 1   |
|     | 00610 |     | Segment Group 15: CTA-COM  | C | O | 9   |
| 98  | 00620 | CTA | Contact Information  | M | M | 1   |
| 99  | 00630 | COM | Communication Contact  | C | O | 9   |
|     | 00640 |     | Segment Group 16: TMP-RNG  | C | O | 9   |
| 101 | 00650 | TMP | Temperature  | M | M | 1   |
| 102 | 00660 | RNG | Range Details  | C | O | 1   |
| 103 | 00670 | CNT | Control Total  | C | O | 1   |
| 104 | 00680 | UNT | Message Trailer  | M | M | 1   |







**Segment:** **UNH** Message Header  
**Position:** 00010  
**Group:**  
**Level:** 0  
**Usage:** Mandatory  
**Max Use:** 1  
**Purpose:** A service segment starting and uniquely identifying a message. The message type code for the Container pre-notification message is COPINO.  
 Note: Container pre-notification messages conforming to this document must contain the following data in segment UNH, composite S009:  
 Data element 0065 COPINO 0052 D 0054 16A 0051  
 UN

**Dependency Notes:****Semantic Notes:****Comments:**

**Notes:** Example: Message envelope number "1357924680", type "COPINO", UN/Edifact directory "D16A"

UNH+1357924680+COPINO:D:16A:UN'

**Data Element Summary**

| <u>Data Element</u> | <u>Component Element</u> | <u>Name</u>   | <u>Base Attributes</u> |          | <u>User Attributes</u> |
|---------------------|--------------------------|---|------------------------|----------|------------------------|
| 0062                |                          | <b>MESSAGE REFERENCE NUMBER</b>   | M                      | 1 an..14 | M                      |
|                     |                          | Unique message reference assigned by the sender.  |                        |          |                        |
| S009                |                          | <b>MESSAGE IDENTIFIER</b>   | M                      | 1        | M                      |
|                     |                          | Identification of the type, version etc. of the message being interchanged.                                 |                        |          |                        |
|                     | 0065                     | <b>Message type identifier</b>  | M                      | an..6    | M                      |
|                     |                          | Code identifying a type of message and assigned by its controlling agency.                                  |                        |          |                        |
|                     |                          | COPINO Container pre-notification message   |                        |          |                        |
|                     | 0052                     | <b>Message type version number</b>  | M                      | an..3    | M                      |
|                     |                          | Version number of a message type.   |                        |          |                        |
|                     |                          | D Draft version/UN/EDIFACT Directory  |                        |          |                        |
|                     | 0054                     | <b>Message type release number</b>  | M                      | an..3    | M                      |
|                     |                          | Release number within the current message type version number (0052).                                       |                        |          |                        |
|                     |                          | 16A Release 2016 - A  |                        |          |                        |
|                     |                          | 95B Release 1995 - B  |                        |          |                        |
|                     |                          | Only for backward compatibility.  |                        |          |                        |
|                     | 0051                     | <b>Controlling agency</b>   | M                      | an..2    | M                      |
|                     |                          | Code identifying the agency controlling the specification, maintenance and publication of the message type. |                        |          |                        |
|                     |                          | UN UN/CEFACT  |                        |          |                        |
|                     | 0057                     | <b>Association assigned code</b>  | C                      | an..6    | O                      |
|                     |                          | Code, assigned by the association responsible for the design and maintenance of the                         |                        |          |                        |



message type concerned, which further identifies the message.

Only for compatibility with SMDG proposal. It will not be processed by JUL system.

|             |   |          |          |               |          |
|-------------|---|----------|----------|---------------|----------|
| <b>0068</b> | <b>COMMON ACCESS REFERENCE</b>  | <b>C</b> | <b>1</b> | <b>an..35</b> | <b>O</b> |
|             | Reference serving as a key to relate all subsequent transfers of data to the same business case or file.                                    |          |          |               |          |
|             | Only for compatibility with SMDG proposal. It will not be processed by JUL system.  |          |          |               |          |
| <b>S010</b> | <b>STATUS OF THE TRANSFER</b>   | <b>C</b> | <b>1</b> |               | <b>X</b> |
|             | Statement that the message is one in a sequence of transfers relating to the same topic.  |          |          |               |          |
| <b>0070</b> | <b>Sequence message transfer number</b>   | <b>M</b> |          | <b>n..2</b>   | <b>X</b> |
|             | Number assigned by the sender indicating that the message is an addition or change of a previously sent message relating to the same topic. |          |          |               |          |
| <b>0073</b> | <b>First/last sequence message transfer indication</b>  | <b>C</b> |          | <b>a1</b>     | <b>X</b> |
|             | Indication used for the first and last message in a sequence of the same type of message relating to the same topic.                        |          |          |               |          |

**Segment:** **BGM** Beginning of Message  
**Position:** 00020  
**Group:**  
**Level:** 0  
**Usage:** Mandatory  
**Max Use:** 1  
**Purpose:** A segment to indicate the beginning of a message and to transmit identifying number and the further specification of the message type (in data element 1001: Document name code), such as Pick-up notice, Arrival notice.

**Dependency Notes:****Semantic Notes:****Comments:**

**Notes:** Example: Transport equipment pick-up notification message PICKNOT123456, original.

BGM+171+PICKNOT123456+9'

**Data Element Summary**

| <u>Data Element</u> | <u>Component Element</u>        | <u>Name</u>   | <u>Base Attributes</u> |         | <u>User Attributes</u> |
|---------------------|---------------------------------|---|------------------------|---------|------------------------|
| C002                |                                 | <b>DOCUMENT/MESSAGE NAME</b>  | C                      | 1       | R                      |
|                     |                                 | Identification of a type of document/message by code or name. Code preferred.                               |                        |         |                        |
|                     | 1001                            | <b>Document name code</b>   | C                      | an..3   | R                      |
|                     |                                 | Code specifying the document name.  |                        |         |                        |
|                     |                                 | 104 Transport equipment impending arrival advice<br>The code applies also to general cargo shipments.       |                        |         |                        |
|                     |                                 | 171 Pick-up notice<br>The code applies also to general cargo shipments.                                     |                        |         |                        |
|                     |                                 | 660 Pre-announcement discharge instruction<br>Only for backward compability. It will be treated like '104'. |                        |         |                        |
|                     |                                 | 661 Pre-announcement loading instruction<br>Only for backward compability. It will be treated like '171'.   |                        |         |                        |
|                     |                                 | 1131 <b>Code list identification code</b>   | C                      | an..17  | X                      |
|                     |                                 | 3055 <b>Code list responsible agency code</b>   | C                      | an..3   | X                      |
| C106                | 1000                            | <b>Document name</b>  | C                      | an..35  | X                      |
|                     |                                 | <b>DOCUMENT/MESSAGE IDENTIFICATION</b>  | C                      | 1       | R                      |
|                     |                                 | Identification of a document/message by its number and eventually its version or revision.                  |                        |         |                        |
|                     | 1004                            | <b>Document identifier</b>  | C                      | an..70  | R                      |
|                     |                                 | To identify a document.   |                        |         |                        |
|                     | 1056                            | <b>Version identifier</b>   | C                      | an..9   | X                      |
|                     | 1060 <b>Revision identifier</b> | C   | an..6                  | X       |                        |
| 1225                |                                 | <b>MESSAGE FUNCTION CODE</b>  | C                      | 1 an..3 | R                      |



**Segment:** **DTM** Date/Time/Period  
**Position:** 00030  
**Group:**  
**Level:** 0  
**Usage:** Conditional (Optional)  
**Max Use:** 1  
**Purpose:** A segment to indicate a date and/or time applying to the whole message, such as date and time of document or message issue.

**Dependency Notes:****Semantic Notes:****Comments:**

**Notes:** Usage complemented in local document if mentioned in that document.

The usage of this segment is to provide the date/time at which the sender creates the message. In this case DE:2005 will be '137'.

Example: Message issued on 2002/02/01 at 14:21

DTM+137:200202011421:203'

**Data Element Summary**

| <u>Data Element</u> | <u>Component Element</u> | <u>Name</u>  | <u>Base Attributes</u> |        | <u>User Attributes</u> |
|---------------------|--------------------------|--|------------------------|--------|------------------------|
| C507                |                          | DATE/TIME/PERIOD   | M                      | 1      | M                      |
|                     |                          | Date and/or time, or period relevant to the specified date/time/period type.               |                        |        |                        |
|                     | 2005                     | <b>Date or time or period function code qualifier</b>                                      | M                      | an..3  | M                      |
|                     |                          | Code qualifying the function of a date, time or period.                                    |                        |        |                        |
|                     |                          | 137 Document issue date time   |                        |        |                        |
|                     | 2380                     | <b>Date or time or period text</b>   | C                      | an..35 | R                      |
|                     |                          | The value of a date, a date and time, a time or of a period in a specified representation. |                        |        |                        |
|                     | 2379                     | <b>Date or time or period format code</b>  | C                      | an..3  | R                      |
|                     |                          | Code specifying the representation of a date, time or period.                              |                        |        |                        |
|                     |                          | 203 CCYYMMDDHHMM   |                        |        |                        |

**Segment:** **FTX** Free Text  
**Position:** 00040  
**Group:**  
**Level:** 1  
**Usage:** Conditional (Optional)  
**Max Use:** 3  
**Purpose:** A segment to specify free form or processable supplementary information, such as:  
 - change information

**Dependency Notes:****Semantic Notes:****Comments:**

**Notes:** Usage complemented in local document if mentioned in that document.

Example: Priority transport equipment

FTX+AAI+++PRIORITY TRANSPORT EQUIPMENT'

**Data Element Summary**

| <u>Data Element</u> | <u>Component Element</u> | <u>Name</u>  | <u>Base Attributes</u> |   |         | <u>User Attributes</u> |
|---------------------|--------------------------|--|------------------------|---|---------|------------------------|
| 4451                |                          | <b>TEXT SUBJECT CODE QUALIFIER</b>                           | M                      | 1 | an..3   | M                      |
|                     |                          | Code qualifying the subject of the text.                     |                        |   |         |                        |
|                     |                          | AAI General information                                      |                        |   |         |                        |
|                     |                          | CHG Change information                                       |                        |   |         |                        |
|                     |                          | To be sent if the BGM:1225 <> '9'.                           |                        |   |         |                        |
|                     |                          | HAN Consignment handling instruction                         |                        |   |         |                        |
| 4453                |                          | <b>FREE TEXT FUNCTION CODE</b>                               | C                      | 1 | an..3   | X                      |
| C107                |                          | <b>TEXT REFERENCE</b>  | C                      | 1 |         | X                      |
|                     |                          | Coded reference to a standard text and its source.           |                        |   |         |                        |
|                     | 4441                     | <b>Free text description code</b>                            | M                      |   | an..17  | X                      |
|                     |                          | Code specifying free form text.                              |                        |   |         |                        |
|                     | 1131                     | <b>Code list identification code</b>                         | C                      |   | an..17  | X                      |
|                     |                          | Code identifying a user or association maintained code list. |                        |   |         |                        |
|                     | 3055                     | <b>Code list responsible agency code</b>                     | C                      |   | an..3   | X                      |
|                     |                          | Code specifying the agency responsible for a code list.      |                        |   |         |                        |
| C108                |                          | <b>TEXT LITERAL</b>  | C                      | 1 |         | O                      |
|                     |                          | Free text; one to five lines.                                |                        |   |         |                        |
|                     | 4440                     | <b>Free text</b>   | M                      |   | an..512 | M                      |
|                     |                          | Free form text.  |                        |   |         |                        |
|                     | 4440                     | <b>Free text</b>   | C                      |   | an..512 | O                      |
|                     |                          | Free form text.  |                        |   |         |                        |
|                     | 4440                     | <b>Free text</b>   | C                      |   | an..512 | O                      |

|             |                              |          |                |          |  |
|-------------|------------------------------|----------|----------------|----------|--|
|             | Free form text.              |          |                |          |  |
| <b>4440</b> | <b>Free text</b>             | <b>C</b> | <b>an..512</b> | <b>O</b> |  |
|             | Free form text.              |          |                |          |  |
| <b>4440</b> | <b>Free text</b>             | <b>C</b> | <b>an..512</b> | <b>O</b> |  |
|             | Free form text.              |          |                |          |  |
| <b>3453</b> | <b>LANGUAGE NAME CODE</b>    | <b>C</b> | <b>1 an..3</b> | <b>X</b> |  |
| <b>4447</b> | <b>FREE TEXT FORMAT CODE</b> | <b>C</b> | <b>1 an..3</b> | <b>X</b> |  |

**Group:** **RFF** Segment Group 1: Reference  
**Position:** 00050  
**Group:**  
**Level:** 1  
**Usage:** Conditional (Optional)  
**Max Use:** 9  
**Purpose:** A group of segments to specify a reference relating to the whole message, and its date and/or time.  
**Notes:** Usage complemented in local document if mentioned in that document.

This group has two alternative functions.

If the message reflects a new document, it means it has the function "Original", and the group identifies the document that is being sent.

In all other cases, it shall be used to reference to a previously issued message of the document at stake.

When referring to previous messages, the methodology follows ITIGG's JM4/208 recommendation as stated in document JM4/ITIGG/96.101/v.131, with the exception of the inclusion of date information.

For referenced message identification, segments RFF and DTM (when present) of this group will be used.

Both situations can be present in the message simultaneously when the message is not "Original".

#### Segment Summary

|   | <b>Pos.</b>       | <b>Seg.</b>      |                    | <b>Req.</b>        | <b>Max.</b>       | <b>Group:</b>        |
|---|-------------------|------------------|--------------------|--------------------|-------------------|----------------------|
|   | <b><u>No.</u></b> | <b><u>ID</u></b> | <b><u>Name</u></b> | <b><u>Des.</u></b> | <b><u>Use</u></b> | <b><u>Repeat</u></b> |
| M | 00060             | RFF              | Reference          | M                  | 1                 |                      |
| O | 00070             | DTM              | Date/Time/Period   | C                  | 1                 |                      |

**Segment:** **RFF** Reference  
**Position:** 00060 (Trigger Segment)  
**Group:** Segment Group 1 (Reference) Conditional (Optional)  
**Level:** 1  
**Usage:** Mandatory  
**Max Use:** 1  
**Purpose:** A segment to express a reference which applies to the entire message, such as: -  
reference to previous message - container pre-notification reference number

**Dependency Notes:****Semantic Notes:****Comments:**

**Notes:** Usage complemented in local document if mentioned in that document.

To identify the reference as a notification document, the reference code qualifier should be in {'AA Y', 'BM', 'BN', 'CN'}.

To identify the reference as a previous message, the reference code qualifier should be 'ACW'.

All other reference code qualifiers are references to allow a relation to other documents in the process.

Example: Carrier's document 2004/002546-1.

RFF+CN:2004/002546-1'

Example: Reference to a previous messages identified by PICKNOT50938803.

RFF+ACW:PICKNOT50938803'

**Data Element Summary**

| <u>Data Element</u> | <u>Component Element</u> | <u>Name</u>                    | <u>Base Attributes</u> |       | <u>User Attributes</u>   |
|---------------------|--------------------------|--------------------------------|------------------------|-------|--|
| C506                |                          | REFERENCE                      | M                      | 1     | M  |
|                     |                          | Identification of a reference. |                        |       |  |
|                     | 1153                     | Reference code qualifier       | M                      | an..3 | M  |
|                     |                          | Code qualifying a reference.   |                        |       |  |
|                     |                          | AA Y                           |                        |       | Carrier's agent reference number   |
|                     |                          | ACA                            |                        |       | Cargo acceptance order reference number  |
|                     |                          | ACW                            |                        |       | Reference number to previous message   |
|                     |                          |                                |                        |       | Use when BGM:1225 <> '9'.  |
|                     |                          | AKA                            |                        |       | Container disposition order reference number                                       |
|                     |                          | ARJ                            |                        |       | Personal identity card number  |
|                     |                          |                                |                        |       | Only for compatibility with SMDG proposal. It will not be processed by JUL system. |
|                     |                          | ATX                            |                        |       | Transport equipment acceptance order reference                                     |



|     |   |
|-----|---|
| ATY | Transport equipment release order reference |
| BM  | Bill of lading number                       |
| BN  | Consignment identifier, carrier assigned    |
| CN  | Carrier's reference number                  |
| RE  | Release number                              |

|             |                             |          |               |          |
|-------------|-----------------------------|----------|---------------|----------|
| <b>1154</b> | <b>Reference identifier</b> | <b>C</b> | <b>an..70</b> | <b>O</b> |
|-------------|-----------------------------|----------|---------------|----------|

Identifies a reference.

If DE:1153 = 'ACW' then send the identification of the previous message (value in BGM:1004 of the previous message) of this document.

|             |                                 |          |              |          |
|-------------|---------------------------------|----------|--------------|----------|
| <b>1156</b> | <b>Document line identifier</b> | <b>C</b> | <b>an..6</b> | <b>X</b> |
| <b>1056</b> | <b>Version identifier</b>       | <b>C</b> | <b>an..9</b> | <b>X</b> |
| <b>1060</b> | <b>Revision identifier</b>      | <b>C</b> | <b>an..6</b> | <b>X</b> |

**Segment:** **DTM** Date/Time/Period  
**Position:** 00070  
**Group:** Segment Group 1 (Reference) Conditional (Optional)  
**Level:** 2  
**Usage:** Conditional (Optional)  
**Max Use:** 1  
**Purpose:** A segment to indicate date and/or time related to the reference.

**Dependency Notes:****Semantic Notes:****Comments:**

**Notes:** Usage complemented in local document if mentioned in that document.

The complete meaning of this date depends of the type of reference in the previous RFF segment, stated in RFF:C506:1153 data element.

Example: Date/time of the reference: "2003/10/08 - 10:15"

DTM+171:200310081015:203'

**Data Element Summary**

| <u>Data Element</u> | <u>Component Element</u> | <u>Name</u>  | <u>Base Attributes</u> |        | <u>User Attributes</u> |
|---------------------|--------------------------|--|------------------------|--------|------------------------|
| C507                |                          | DATE/TIME/PERIOD   | M                      | 1      | M                      |
|                     |                          | Date and/or time, or period relevant to the specified date/time/period type.               |                        |        |                        |
|                     | 2005                     | <b>Date or time or period function code qualifier</b>                                      | M                      | an..3  | M                      |
|                     |                          | Code qualifying the function of a date, time or period.                                    |                        |        |                        |
|                     |                          | 171 Reference date/time  |                        |        |                        |
|                     | 2380                     | <b>Date or time or period text</b>   | C                      | an..35 | R                      |
|                     |                          | The value of a date, a date and time, a time or of a period in a specified representation. |                        |        |                        |
|                     | 2379                     | <b>Date or time or period format code</b>  | C                      | an..3  | R                      |
|                     |                          | Code specifying the representation of a date, time or period.                              |                        |        |                        |
|                     |                          | 203 CCYYMMDDHHMM   |                        |        |                        |

**Group:** **TDT** **Segment Group 2: Transport Information**  
**Position:** 00080  
**Group:**  
**Level:** 1  
**Usage:** Mandatory  
**Max Use:** 1  
**Purpose:** A group of segments to indicate details of the movement of containers by inland carriers, such as mode and means of transport, arrival date and time.  
**Notes:** Usage complemented in local document if mentioned in that document.

This group is to provide information on the transport that is going to deliver or to pick-up the transport equipment or the general cargo shipment.

The SG3 (LOC) in this group will allow to identify the location where the activity will occur and the estimated date and time of the execution of that activity.

#### Segment Summary

|   | <b>Pos.</b> | <b>Seg.</b> |  | <b>Req.</b> | <b>Max.</b> | <b>Group:</b> |
|---|-------------|-------------|--|-------------|-------------|---------------|
|   | <b>No.</b>  | <b>ID</b>   | <b>Name</b>                                    | <b>Des.</b> | <b>Use</b>  | <b>Repeat</b> |
| M | 00090       | TDT         | Transport Information                          | M           | 1           |               |
| O | 00110       | RFF         | Reference                                      | C           | 1           |               |
|   | 00120       |             | Segment Group 3: Place/Location Identification | C           |             | 9             |

**Segment:** **TDT** **Transport Information**  
**Position:** 00090 (Trigger Segment)  
**Group:** Segment Group 2 (Transport Information) Mandatory  
**Level:** 1  
**Usage:** Mandatory  
**Max Use:** 1  
**Purpose:** A segment to indicate information related to the inland transport stage (road, rail or inland water), such as mode, voyage number/indication inland transport, identification and type of transport means and inland carrier.

**Dependency Notes:****Semantic Notes:****Comments:**

**Notes:** Usage complemented in local document if mentioned in that document.

Example: Carriage transport by rail, inland, voyage number 3108170615, operated by MEDWAY, identified by CPCARGA, train number A15E9344, portuguese.

TDT+1+3108170615+2++CPCARGA:172::MEDWAY+++A15E9344:::PT'

**Data Element Summary**

| <u>Data Element</u> | <u>Component Element</u> | <u>Name</u>  | <u>Base Attributes</u> |   |        | <u>User Attributes</u> |
|---------------------|--------------------------|--|------------------------|---|--------|------------------------|
| 8051                |                          | <b>TRANSPORT STAGE CODE QUALIFIER</b>  | M                      | 1 | an..3  | M                      |
|                     |                          | Code qualifying a specific stage of transport.   |                        |   |        |                        |
|                     |                          | 1 Inland transport   |                        |   |        |                        |
| 8028                |                          | <b>MEANS OF TRANSPORT JOURNEY IDENTIFIER</b>   | C                      | 1 | an..17 | O                      |
|                     |                          | To identify a journey of a means of transport.   |                        |   |        |                        |
|                     |                          | Usage complemented in local document if mentioned in that document.  |                        |   |        |                        |
|                     |                          | Means of transport operator's voyage number.   |                        |   |        |                        |
|                     |                          | Either this element or SG2:RFF must be used to specify a voyage number, or none of them are needed in case there is an occurrence of SG2:RFF referring the visit id. |                        |   |        |                        |
| C220                |                          | <b>MODE OF TRANSPORT</b>   | C                      | 1 |        | R                      |
|                     |                          | Method of transport code or name. Code preferred.  |                        |   |        |                        |
|                     | 8067                     | <b>Transport mode name code</b>  | C                      |   | an..3  | R                      |
|                     |                          | Code specifying the name of a mode of transport.   |                        |   |        |                        |
|                     |                          | UN Recommendation 19 - Codes for Modes of Transport.   |                        |   |        |                        |
|                     |                          | 2 Rail   |                        |   |        |                        |
|                     |                          | 3 Road   |                        |   |        |                        |
|                     |                          | 7 Fixed installation   |                        |   |        |                        |
|                     |                          | 8 Inland water   |                        |   |        |                        |
|                     | 8066                     | <b>Transport mode name</b>   | C                      |   | an..17 | X                      |

|             |   |          |               |              |          |
|-------------|---|----------|---------------|--------------|----------|
| <b>C001</b> | <b>TRANSPORT MEANS</b>  | <b>C</b> | <b>1</b>      | <b>O</b>     |          |
|             | Code and/or name identifying the type of means of transport.  |          |               |              |          |
|             | Usage complemented in local document if mentioned in that document.   |          |               |              |          |
| <b>8179</b> | <b>Transport means description code</b>   | <b>C</b> | <b>an..8</b>  | <b>O</b>     |          |
|             | Code specifying the means of transport.   |          |               |              |          |
|             | UN Recommendation 28 - Code for Types of Means of Transport.  |          |               |              |          |
| <b>1131</b> | <b>Code list identification code</b>  | <b>C</b> | <b>an..17</b> | <b>X</b>     |          |
| <b>3055</b> | <b>Code list responsible agency code</b>  | <b>C</b> | <b>an..3</b>  | <b>X</b>     |          |
| <b>8178</b> | <b>Transport means description</b>  | <b>C</b> | <b>an..17</b> | <b>O</b>     |          |
|             | Free form description of the means of transport.  |          |               |              |          |
|             | Only for compatibility with SMDG proposal. It will not be processed by JUL system.                            |          |               |              |          |
| <b>C040</b> | <b>CARRIER</b>  | <b>C</b> | <b>1</b>      | <b>O</b>     |          |
|             | Identification of a carrier by code and/or by name. Code preferred.   |          |               |              |          |
|             | Usage complemented in local document if mentioned in that document.   |          |               |              |          |
| <b>3127</b> | <b>Carrier identifier</b>   | <b>C</b> | <b>an..17</b> | <b>O</b>     |          |
|             | To identify a carrier.  |          |               |              |          |
|             | Means of transport operator's code.   |          |               |              |          |
| <b>1131</b> | <b>Code list identification code</b>  | <b>C</b> | <b>an..17</b> | <b>O</b>     |          |
|             | Code identifying a user or association maintained code list.  |          |               |              |          |
| <b>3055</b> | <b>Code list responsible agency code</b>  | <b>C</b> | <b>an..3</b>  | <b>O</b>     |          |
|             | Code specifying the agency responsible for a code list.   |          |               |              |          |
|             | Only for compatibility with SMDG proposal. It will not be processed by JUL system.                            |          |               |              |          |
|             | Refer to D.16A Data Element Dictionary for acceptable code values.  |          |               |              |          |
| <b>3126</b> | <b>Carrier name</b>   | <b>C</b> | <b>an..35</b> | <b>O</b>     |          |
|             | Name of a carrier.  |          |               |              |          |
| <b>8101</b> | <b>TRANSIT DIRECTION INDICATOR CODE</b>   | <b>C</b> | <b>1</b>      | <b>an..3</b> | <b>X</b> |
| <b>C401</b> | <b>EXCESS TRANSPORTATION INFORMATION</b>  | <b>C</b> | <b>1</b>      |              | <b>X</b> |
|             | To provide details of reason for, and responsibility for, use of transportation other than normally utilized. |          |               |              |          |
| <b>8457</b> | <b>Excess transportation reason code</b>  | <b>M</b> | <b>an..3</b>  | <b>X</b>     |          |
|             | Code specifying the reason for excess transportation.   |          |               |              |          |
| <b>8459</b> | <b>Excess transportation responsibility code</b>  | <b>M</b> | <b>an..3</b>  | <b>X</b>     |          |
|             | Code specifying the responsibility for excess transportation.   |          |               |              |          |
| <b>7130</b> | <b>Customer shipment authorisation identifier</b>   | <b>C</b> | <b>an..17</b> | <b>X</b>     |          |
|             | To identify the authorisation to ship issued by the customer.   |          |               |              |          |
| <b>C222</b> | <b>TRANSPORT IDENTIFICATION</b>   | <b>C</b> | <b>1</b>      | <b>O</b>     |          |
|             | Code and/or name identifying the means of transport.  |          |               |              |          |
|             | Usage complemented in local document if mentioned in that document.   |          |               |              |          |
| <b>8213</b> | <b>Transport means identification name identifier</b>   | <b>C</b> | <b>an..35</b> | <b>O</b>     |          |

Identifies the name of the transport means.

Identification of the means of transport by number.

Either this element or SG2:RFF must be used to specify a means of transport identification, or none of them are needed in case there is an occurrence of SG2:RFF referring the visit id.

|             |   |          |                |          |
|-------------|---|----------|----------------|----------|
| <b>1131</b> | <b>Code list identification code</b>  | <b>C</b> | <b>an..17</b>  | <b>O</b> |
|             | Code identifying a user or association maintained code list.<br>Only for compatibility with SMDG proposal. It will not be processed by JUL system.  |          |                |          |
| <b>3055</b> | <b>Code list responsible agency code</b>  | <b>C</b> | <b>an..3</b>   | <b>O</b> |
|             | Code specifying the agency responsible for a code list.<br>Only for compatibility with SMDG proposal. It will not be processed by JUL system.<br>Refer to D.16A Data Element Dictionary for acceptable code values. |          |                |          |
| <b>8212</b> | <b>Transport means identification name</b>  | <b>C</b> | <b>an..70</b>  | <b>O</b> |
|             | Name identifying a means of transport.<br>Only for compatibility with SMDG proposal. It will not be processed by JUL system.  |          |                |          |
| <b>8453</b> | <b>Transport means nationality code</b>   | <b>C</b> | <b>an..3</b>   | <b>O</b> |
|             | Code specifying the nationality of a means of transport.<br>Flag of Means of Transport (ISO 3166 country code, 2-alpha).  |          |                |          |
| <b>8281</b> | <b>TRANSPORT MEANS OWNERSHIP INDICATOR CODE</b>   | <b>C</b> | <b>1 an..3</b> | <b>X</b> |
| <b>C003</b> | <b>POWER TYPE</b>   | <b>C</b> | <b>1</b>       | <b>X</b> |
|             | To specify the type of power.   |          |                |          |
| <b>7041</b> | <b>Power type code</b>  | <b>C</b> | <b>an..3</b>   | <b>X</b> |
|             | Code indicating the type of power.  |          |                |          |
| <b>1131</b> | <b>Code list identification code</b>  | <b>C</b> | <b>an..17</b>  | <b>X</b> |
|             | Code identifying a user or association maintained code list.  |          |                |          |
| <b>3055</b> | <b>Code list responsible agency code</b>  | <b>C</b> | <b>an..3</b>   | <b>X</b> |
|             | Code specifying the agency responsible for a code list.   |          |                |          |
| <b>7040</b> | <b>Power type description</b>   | <b>C</b> | <b>an..17</b>  | <b>X</b> |
|             | Description of the type of power.   |          |                |          |

**Segment:** **RFF** Reference  
**Position:** 00110  
**Group:** Segment Group 2 (Transport Information) Mandatory  
**Level:** 2  
**Usage:** Conditional (Optional)  
**Max Use:** 1  
**Purpose:** A segment to specify an additional reference related to transport details.

**Dependency Notes:****Semantic Notes:****Comments:**

**Notes:** Usage complemented in local document if mentioned in that document.

Although this segment is marked as optional, in the JUL implementation this is the preferred way to identify a visit id of the means of transport, or operation in case of fixed installations, in the facility (port, terminal, logistics platform, etc.) where the delivery/pick-up will occur. This identification is provided by the JUL system.

Example: Train visit id at Leixões is PTLEI218001032

RFF+Z02:PTLEI218001032'

**Data Element Summary**

| <u>Data Element</u> | <u>Component Element</u> | <u>Name</u>                                       | <u>Base Attributes</u> |        | <u>User Attributes</u> |
|---------------------|--------------------------|---|------------------------|--------|------------------------|
| C506                |                          | REFERENCE   | M                      | 1      | M                      |
|                     |                          | Identification of a reference.                    |                        |        |                        |
|                     | 1153                     | Reference code qualifier                          | M                      | an..3  | M                      |
|                     |                          | Code qualifying a reference.                      |                        |        |                        |
|                     |                          | Z02 Train stay reference number                   |                        |        |                        |
|                     |                          | Z03 Truck/Tractor stay reference number           |                        |        |                        |
|                     |                          | Z07 Fixed installation operation reference number |                        |        |                        |
|                     |                          | Z08 Barge/Inland stay reference number            |                        |        |                        |
|                     | 1154                     | Reference identifier                              | C                      | an..70 | O                      |
|                     |                          | Identifies a reference.                           |                        |        |                        |
|                     | 1156                     | Document line identifier                          | C                      | an..6  | X                      |
|                     | 1056                     | Version identifier                                | C                      | an..9  | X                      |
|                     | 1060                     | Revision identifier                               | C                      | an..6  | X                      |

**Group:** **LOC** Segment Group 3: Place/Location Identification  
**Position:** 00120  
**Group:** Segment Group 2 (Transport Information) Mandatory  
**Level:** 2  
**Usage:** Conditional (Optional)  
**Max Use:** 9  
**Purpose:** A group of segments to indicate locations at which the inland means of transport is to arrive.  
**Notes:** Usage complemented in local document if mentioned in that document.

This group is to identify the facility (port, terminal, logistics platform, etc.) of departure or destination of the means of transport identified in SG2:TDT.

#### Segment Summary

|   | <b>Pos.</b>       | <b>Seg.</b>      |                               | <b>Req.</b>        | <b>Max.</b>       | <b>Group:</b>        |
|---|-------------------|------------------|-------------------------------|--------------------|-------------------|----------------------|
|   | <b><u>No.</u></b> | <b><u>ID</u></b> | <b><u>Name</u></b>            | <b><u>Des.</u></b> | <b><u>Use</u></b> | <b><u>Repeat</u></b> |
| M | 00130             | LOC              | Place/Location Identification | M                  | 1                 |                      |
| O | 00140             | DTM              | Date/Time/Period              | C                  | 4                 |                      |



|                          |   |
|--------------------------|---|
| <b>Segment:</b>          | <b>LOC</b> Place/Location Identification                                    |
| <b>Position:</b>         | 00130 (Trigger Segment)   |
| <b>Group:</b>            | Segment Group 3 (Place/Location Identification)      Conditional (Optional) |
| <b>Level:</b>            | 2   |
| <b>Usage:</b>            | Mandatory   |
| <b>Max Use:</b>          | 1   |
| <b>Purpose:</b>          | A segment to indicate locations such as place or port of arrival.           |
| <b>Dependency Notes:</b> |   |
| <b>Semantic Notes:</b>   |   |
| <b>Comments:</b>         |   |
| <b>Notes:</b>            | Usage complemented in local document if mentioned in that document.         |

In some situations, the code in DE:C517:3225 is not sufficient to identify the location for departure or destination of the means of transport, due to the lack of detail inherent to the reference code. This is mainly applied when a particular installation may be identified. To mitigate this limitation, two options are considered to provide complementary data. One is by using DE:C519:3223 based on a non-standard list. The other and preferred, is to identify the entity operating the installation in SG4:NAD with the value of SG4:NAD:3035 in {'JB', 'JC'}.

Example: Place of destination is Bobadela Logistics Platform

LOC+8+PTBBL:5:6'

#### Data Element Summary

| Data Element | Component Element | Name  | Base Attributes |   | User Attributes |   |
|--------------|-------------------|---|-----------------|---|-----------------|---|
|              |                   |   | M               | 1 | an..3           | M |
| 3227         |                   | LOCATION FUNCTION CODE QUALIFIER                                    | M               | 1 | an..3           | M |
|              |                   | Code identifying the function of a location.                        |                 |   |                 |   |
|              |                   | 5 Place of departure  |                 |   |                 |   |
|              |                   | 7 Place of delivery   |                 |   |                 |   |
|              |                   | Usage complemented in local document if mentioned in that document. |                 |   |                 |   |
|              |                   | Only for backward compatibility. It will be treated like '8'.       |                 |   |                 |   |
|              |                   | 8 Place of destination  |                 |   |                 |   |
|              |                   | 88 Place of receipt   |                 |   |                 |   |
|              |                   | Usage complemented in local document if mentioned in that document. |                 |   |                 |   |
|              |                   | Only for backward compatibility. It will be treated like '5'.       |                 |   |                 |   |
| C517         |                   | LOCATION IDENTIFICATION   | C               | 1 |                 | R |
|              |                   | Identification of a location by code or name.                       |                 |   |                 |   |
|              | 3225              | Location identifier   | C               |   | an..35          | R |
|              |                   | To identify a location.   |                 |   |                 |   |

Use UN/ECE Recommendation 16 (3rd edition) - UN/LOCODE- Codes for Port and Other Locations (Doc. Ref. ECE/TRADE/227) upgraded to 2003.2 version.

If the Locode is unknown, then send ISO Country Code (2-alpha) and send DE:3224.

|             |             |   |          |                |          |
|-------------|-------------|---|----------|----------------|----------|
|             | <b>1131</b> | <b>Code list identification code</b>  | <b>C</b> | <b>an..17</b>  | <b>O</b> |
|             |             | Code identifying a user or association maintained code list.                              |          |                |          |
|             |             | 5 Facility identification   |          |                |          |
|             |             | 37 Railway locations  |          |                |          |
|             |             | 139 Port  |          |                |          |
|             | <b>3055</b> | <b>Code list responsible agency code</b>  | <b>C</b> | <b>an..3</b>   | <b>O</b> |
|             |             | Code specifying the agency responsible for a code list.                                   |          |                |          |
|             |             | 5 ISO (International Organization for Standardization)                                    |          |                |          |
|             |             | 6 UN/ECE (United Nations - Economic Commission for Europe)                                |          |                |          |
|             | <b>3224</b> | <b>Location name</b>  | <b>C</b> | <b>an..256</b> | <b>O</b> |
|             |             | Name of the location.   |          |                |          |
|             |             | <i>Only for compatibility with SMDG proposal. It will not be processed by JUL system.</i> |          |                |          |
| <b>C519</b> |             | <b>RELATED LOCATION ONE IDENTIFICATION</b>  | <b>C</b> | <b>1</b>       | <b>O</b> |
|             |             | Identification the first related location by code or name.                                |          |                |          |
|             |             | Usage complemented in local document if mentioned in that document.                       |          |                |          |
|             | <b>3223</b> | <b>First related location identifier</b>  | <b>C</b> | <b>an..35</b>  | <b>O</b> |
|             |             | To identify a first related location.   |          |                |          |
|             |             | Usage complemented in local document if mentioned in that document.                       |          |                |          |
|             |             | Use the codes for facilities located in the location specified in DE:3225.                |          |                |          |
|             | <b>1131</b> | <b>Code list identification code</b>  | <b>C</b> | <b>an..17</b>  | <b>O</b> |
|             |             | Code identifying a user or association maintained code list.                              |          |                |          |
|             |             | Usage complemented in local document if mentioned in that document.                       |          |                |          |
|             | <b>3055</b> | <b>Code list responsible agency code</b>  | <b>C</b> | <b>an..3</b>   | <b>O</b> |
|             |             | Code specifying the agency responsible for a code list.                                   |          |                |          |
|             |             | Usage complemented in local document if mentioned in that document.                       |          |                |          |
|             |             | Refer to D.16A Data Element Dictionary for acceptable code values.                        |          |                |          |
|             | <b>3222</b> | <b>First related location name</b>  | <b>C</b> | <b>an..70</b>  | <b>O</b> |
|             |             | Name of first related location.   |          |                |          |
|             |             | <i>Only for compatibility with SMDG proposal. It will not be processed by JUL system.</i> |          |                |          |
| <b>C553</b> |             | <b>RELATED LOCATION TWO IDENTIFICATION</b>  | <b>C</b> | <b>1</b>       | <b>O</b> |
|             |             | Identification of second related location by code or name.                                |          |                |          |
|             |             | <i>Only for compatibility with SMDG proposal. It will not be processed by JUL system.</i> |          |                |          |
|             | <b>3233</b> | <b>Second related location identifier</b>   | <b>C</b> | <b>an..35</b>  | <b>O</b> |
|             |             | To identify a second related location.  |          |                |          |

|             |   |          |                |          |
|-------------|---|----------|----------------|----------|
| <b>1131</b> | <b>Code list identification code</b>  | <b>C</b> | <b>an..17</b>  | <b>O</b> |
|             | Code identifying a user or association maintained code list.  |          |                |          |
| <b>3055</b> | <b>Code list responsible agency code</b>  | <b>C</b> | <b>an..3</b>   | <b>O</b> |
|             | Code specifying the agency responsible for a code list.<br>Refer to D.16A Data Element Dictionary for acceptable code values. |          |                |          |
| <b>3232</b> | <b>Second related location name</b>   | <b>C</b> | <b>an..70</b>  | <b>O</b> |
|             | Name of the second related location.  |          |                |          |
| <b>5479</b> | <b>RELATION CODE</b>  | <b>C</b> | <b>1 an..3</b> | <b>X</b> |

**Segment:** **DTM** Date/Time/Period  
**Position:** 00140  
**Group:** Segment Group 3 (Place/Location Identification) Conditional (Optional)  
**Level:** 3  
**Usage:** Conditional (Optional)  
**Max Use:** 4  
**Purpose:** A segment to indicate the arrival date and time of an inland means of transport, such as: - arrival date/time, estimated

**Dependency Notes:****Semantic Notes:****Comments:**

**Notes:** Usage complemented in local document if mentioned in that document.

This segment provides the date and time estimated for the departure/arrival of the means of transport at the facility identified in LOC segment in this group.

Example: Train estimated date/time of arrival is 2018/10/31 14:35

DTM+132:201810311435:203'

**Data Element Summary**

| <u>Data Element</u> | <u>Component Element</u> | <u>Name</u>  | <u>Base Attributes</u> |        | <u>User Attributes</u> |
|---------------------|--------------------------|--|------------------------|--------|------------------------|
| C507                |                          | DATE/TIME/PERIOD   | M                      | 1      | M                      |
|                     |                          | Date and/or time, or period relevant to the specified date/time/period type.               |                        |        |                        |
|                     | 2005                     | Date or time or period function code qualifier   | M                      | an..3  | M                      |
|                     |                          | Code qualifying the function of a date, time or period.                                    |                        |        |                        |
|                     |                          | 132 Transport means arrival date time, estimated   |                        |        |                        |
|                     |                          | 133 Transport means departure date/time, estimated   |                        |        |                        |
|                     |                          | 178 Transport means arrival date time, actual  |                        |        |                        |
|                     |                          | Only for compatibility with SMDG proposal. It will not be processed by JUL system.         |                        |        |                        |
|                     |                          | 186 Transport means departure date/time, actual  |                        |        |                        |
|                     |                          | Only for compatibility with SMDG proposal. It will not be processed by JUL system.         |                        |        |                        |
|                     | 2380                     | Date or time or period text  | C                      | an..35 | R                      |
|                     |                          | The value of a date, a date and time, a time or of a period in a specified representation. |                        |        |                        |
|                     | 2379                     | Date or time or period format code   | C                      | an..3  | R                      |
|                     |                          | Code specifying the representation of a date, time or period.                              |                        |        |                        |
|                     |                          | 203 CCYYMMDDHHMM   |                        |        |                        |

**Group:** **NAD** Segment Group 4: Name and Address  
**Position:** 00150  
**Group:**  
**Level:** 1  
**Usage:** Mandatory  
**Max Use:** 9  
**Purpose:** A group of segments to identify a party and/or addresses and related contacts.  
**Notes:** Usage complemented in local document if mentioned in that document.

This group is used to identify the entities related with the whole document. However, some of them may be stated at detail level (SG11). This will be signaled when needed.

It will be possible that the entity that sends the message, might not be the same that is making the notification to the terminal.

This group must be sent to identify the sender, the receiver, the inland carrier and the facility operator.

It is also used to identify the party receiving or delivering the goods at the location identified in SG3:LOC. In this case NAD:3035 = 'JC' or NAD:3035 = 'JB', respectively. This usage is the preferred way cope with some situations, when the code in SG3:LOC:C517:3225 is not sufficient to identify the location for deliver or reception of goods, due to the lack of detail inherent to the reference code. This is mainly applied when SG3:LOC:3227 in {'7', '88'} in that a particular installation may be identified.

Segment Group 5 given information related with the Contact Information is to be used only when NAD:3035 is 'TR' or corresponds to the inland carrier.

#### Segment Summary

|   | <b>Pos.</b>       | <b>Seg.</b>      |                                      | <b>Req.</b>        | <b>Max.</b>       | <b>Group:</b>        |
|---|-------------------|------------------|--------------------------------------|--------------------|-------------------|----------------------|
|   | <b><u>No.</u></b> | <b><u>ID</u></b> | <b><u>Name</u></b>                   | <b><u>Des.</u></b> | <b><u>Use</u></b> | <b><u>Repeat</u></b> |
| M | 00160             | NAD              | Name and Address                     | M                  | 1                 |                      |
|   | 00170             |                  | Segment Group 5: Contact Information | C                  |                   | 1                    |

**Segment:** **NAD** Name and Address  
**Position:** 00160 (Trigger Segment)  
**Group:** Segment Group 4 (Name and Address) Mandatory  
**Level:** 1  
**Usage:** Mandatory  
**Max Use:** 1  
**Purpose:** A segment to identify the party's name and address, and function, such as: - message recipient - message sender

**Dependency Notes:****Semantic Notes:****Comments:**

**Notes:** Usage complemented in local document if mentioned in that document.

The entities are to be identified by their EORI. In Portugal the EORI id is composed by PT+[VAT number].

Example: Terminal operator identified by PT541495122.

NAD+TR+PT541495122'

**Data Element Summary**

| <u>Data Element</u> | <u>Component Element</u> | <u>Name</u>   | <u>Base Attributes</u> | <u>User Attributes</u> |
|---------------------|--------------------------|---|------------------------|------------------------|
| 3035                |                          | PARTY FUNCTION CODE QUALIFIER   | M 1 an..3              | M                      |
|                     |                          | Code giving specific meaning to a party.  |                        |                        |
|                     | AG                       | Agent   |                        |                        |
|                     |                          | The entity responsible for the transport equipment or the general cargo shipment in the port. |                        |                        |
|                     |                          | The entity corresponds to the Sender in a Rail Consignment Note.                              |                        |                        |
|                     | CA                       | Carrier   |                        |                        |
|                     |                          | Only for compatibility with SMDG proposal. It will not be processed by JUL system.            |                        |                        |
|                     | CB                       | Customs broker  |                        |                        |
|                     |                          | Only for compatibility with SMDG proposal. It will not be processed by JUL system.            |                        |                        |
|                     | CF                       | Container operator/lessee   |                        |                        |
|                     | CN                       | Consignee   |                        |                        |
|                     |                          | Only for compatibility with SMDG proposal. It will not be processed by JUL system.            |                        |                        |
|                     | FW                       | Freight forwarder   |                        |                        |
|                     |                          | Only for compatibility with SMDG proposal. It will not be processed by JUL system.            |                        |                        |
|                     | GA                       | Road carrier  |                        |                        |
|                     |                          | Must be sent if the road inland carrier.  |                        |                        |

|    |  |
|----|--|
| GT | Rail carrier<br>Must be sent if the rail inland carrier.   |
| HA | Party which delivers consignments to the terminal  |
| HB | Party which picks up consignments from the terminal  |
| HR | Shipping line service<br>Only for compatibility with SMDG proposal. It will not be processed by JUL system.  |
| JB | Goods collection party<br>Use this qualifier to identify the party responsible for the terminal delivering the goods for carriage at the location identified in SG3:LOC, when SG3:LOC:3227 = '88'.         |
| JC | Party at final place of positioning<br>Use this qualifier to identify the party responsible for terminal receiving the goods from carriage at the location identified in SG3:LOC, when SG3:LOC:3227 = '7'. |
| MR | Message recipient<br>Must always be sent.  |
| MS | Document/message issuer/sender<br>Must always be sent.   |
| OY | Ordering customer<br>Only for compatibility with SMDG proposal. It will not be processed by JUL system.  |
| TR | Terminal operator<br>Usage complemented in local document if mentioned in that document.<br><br>Indicates that the party is responsible for the operation of the facility.                                 |

|             |   |          |               |          |
|-------------|---|----------|---------------|----------|
| <b>C082</b> | <b>PARTY IDENTIFICATION DETAILS</b>   | <b>C</b> | <b>1</b>      | <b>O</b> |
|             | Identification of a transaction party by code.  |          |               |          |
| <b>3039</b> | <b>Party identifier</b>   | <b>M</b> | <b>an..35</b> | <b>M</b> |
|             | Code specifying the identity of a party.<br>Number corresponding to EORI of the entity, or another code mutually agreed between the parties.  |          |               |          |
| <b>1131</b> | <b>Code list identification code</b>  | <b>C</b> | <b>an..17</b> | <b>O</b> |
|             | Code identifying a user or association maintained code list.<br>160 Party identification<br>172 Carriers  |          |               |          |
| <b>3055</b> | <b>Code list responsible agency code</b>  | <b>C</b> | <b>an..3</b>  | <b>O</b> |
|             | Code specifying the agency responsible for a code list.<br>Only for compatibility with SMDG proposal. It will not be processed by JUL system.<br>Refer to D.16A Data Element Dictionary for acceptable code values. |          |               |          |
| <b>C058</b> | <b>NAME AND ADDRESS</b>   | <b>C</b> | <b>1</b>      | <b>O</b> |

|      |      |  |     |          |
|------|------|--|-----|----------|
|      |      | Unstructured name and address: one to five lines.  |     |          |
|      |      | Only for compatibility with SMDG proposal. It will not be processed by JUL system.             |     |          |
|      | 3124 | <b>Name and address description</b>  | M   | an..35 M |
|      |      | Free form description of a name and address line.  |     |          |
|      | 3124 | <b>Name and address description</b>  | C   | an..35 O |
|      |      | Free form description of a name and address line.  |     |          |
|      | 3124 | <b>Name and address description</b>  | C   | an..35 O |
|      |      | Free form description of a name and address line.  |     |          |
|      | 3124 | <b>Name and address description</b>  | C   | an..35 O |
|      |      | Free form description of a name and address line.  |     |          |
|      | 3124 | <b>Name and address description</b>  | C   | an..35 O |
|      |      | Free form description of a name and address line.  |     |          |
| C080 |      | <b>PARTY NAME</b>  | C 1 | O        |
|      |      | Identification of a transaction party by name, one to five lines. Party name may be formatted. |     |          |
|      |      | Use if DE:3035 in {'JB', 'JC'} and the company id to be used in DE:C082:3039 is unknown.       |     |          |
|      | 3036 | <b>Party name</b>  | M   | an..70 M |
|      |      | Name of a party.   |     |          |
|      | 3036 | <b>Party name</b>  | C   | an..70 X |
|      | 3036 | <b>Party name</b>  | C   | an..70 X |
|      | 3036 | <b>Party name</b>  | C   | an..70 X |
|      | 3036 | <b>Party name</b>  | C   | an..70 X |
|      | 3045 | <b>Party name format code</b>  | C   | an..3 X  |
| C059 |      | <b>STREET</b>  | C 1 | O        |
|      |      | Street address and/or PO Box number in a structured address: one to four lines.                |     |          |
|      |      | Use if DE:3035 in {'JB', 'JC'} and the company id to be used in DE:C082:3039 is unknown.       |     |          |
|      | 3042 | <b>Street and number or post office box identifier</b>   | M   | an..35 M |
|      |      | To identify a street and number and/or Post Office box number.                                 |     |          |
|      | 3042 | <b>Street and number or post office box identifier</b>   | C   | an..35 X |
|      | 3042 | <b>Street and number or post office box identifier</b>   | C   | an..35 X |
|      | 3042 | <b>Street and number or post office box identifier</b>   | C   | an..35 X |
| 3164 |      | <b>CITY NAME</b>   | C 1 | an..35 O |
|      |      | Name of a city.  |     |          |
|      |      | Only for compatibility with SMDG proposal. It will not be processed by JUL system.             |     |          |
| C819 |      | <b>COUNTRY SUBDIVISION DETAILS</b>   | C 1 | O        |
|      |      | To specify a country subdivision, such as state, canton, county, prefecture.                   |     |          |
|      |      | Only for compatibility with SMDG proposal. It will not be processed by JUL system.             |     |          |



|             |   |          |                 |          |
|-------------|---|----------|-----------------|----------|
| <b>3229</b> | <b>Country subdivision identifier</b>   | <b>C</b> | <b>an..9</b>    | <b>O</b> |
|             | To identify a country subdivision, such as state, canton, county, prefecture.   |          |                 |          |
| <b>1131</b> | <b>Code list identification code</b>  | <b>C</b> | <b>an..17</b>   | <b>O</b> |
|             | Code identifying a user or association maintained code list.  |          |                 |          |
| <b>3055</b> | <b>Code list responsible agency code</b>  | <b>C</b> | <b>an..3</b>    | <b>O</b> |
|             | Code specifying the agency responsible for a code list.<br>Refer to D.16A Data Element Dictionary for acceptable code values.                                   |          |                 |          |
| <b>3228</b> | <b>Country subdivision name</b>   | <b>C</b> | <b>an..70</b>   | <b>O</b> |
|             | Name of a country subdivision, such as state, canton, county, prefecture.   |          |                 |          |
| <b>3251</b> | <b>POSTAL IDENTIFICATION CODE</b>   | <b>C</b> | <b>1 an..17</b> | <b>O</b> |
|             | Code specifying the postal zone or address.<br><i>Only for compatibility with SMDG proposal. It will not be processed by JUL system.</i>                        |          |                 |          |
| <b>3207</b> | <b>COUNTRY IDENTIFIER</b>   | <b>C</b> | <b>1 an..3</b>  | <b>O</b> |
|             | Identification of the name of the country or other geographical entity as defined in ISO 3166-1 and UN/ECE Recommendation 3.<br>ISO 3166 Country Code, 2-Alpha. |          |                 |          |

**Group:** **CTA** Segment Group 5: Contact Information  
**Position:** 00170  
**Group:** Segment Group 4 (Name and Address) Mandatory  
**Level:** 2  
**Usage:** Conditional (Dependent)  
**Max Use:** 1  
**Purpose:** A group of segments to identify a contact and its communications related to the party.  
**Notes:** Usage complemented in local document if mentioned in that document.

#### Segment Summary

|   | <b>Pos.</b>       | <b>Seg.</b>      |                       | <b>Req.</b>        | <b>Max.</b>       | <b>Group:</b>        |
|---|-------------------|------------------|-----------------------|--------------------|-------------------|----------------------|
|   | <b><u>No.</u></b> | <b><u>ID</u></b> | <b><u>Name</u></b>    | <b><u>Des.</u></b> | <b><u>Use</u></b> | <b><u>Repeat</u></b> |
| M | 00180             | CTA              | Contact Information   | M                  | 1                 |                      |
| O | 00190             | COM              | Communication Contact | C                  | 4                 |                      |

**Segment:** **CTA Contact Information**  
**Position:** 00180 (Trigger Segment)  
**Group:** Segment Group 5 (Contact Information)      Conditional (Dependent)  
**Level:** 2  
**Usage:** Mandatory  
**Max Use:** 1  
**Purpose:** A segment to identify a person or department of a message sender and/or message recipient, such as: - information contact

**Dependency Notes:****Semantic Notes:****Comments:**

**Notes:** Example: Contact Mr. Rui Silva.

CTA+IC+:RUI SILVA'

**Data Element Summary**

| <u>Data Element</u> | <u>Component Element</u> | <u>Name</u>   | <u>Base Attributes</u> | <u>User Attributes</u> |
|---------------------|--------------------------|---|------------------------|------------------------|
| 3139                |                          | <b>CONTACT FUNCTION CODE</b><br>Code specifying the function of a contact (e.g. department or person).<br>IC                      Information contact | C 1 an..3              | O                      |
| C056                |                          | <b>CONTACT DETAILS</b><br>Code and/or name of a contact such as a department or employee. Code preferred.   | C 1                    | O                      |
|                     | 3413                     | <b>Contact identifier</b>   | C an..17               | X                      |
|                     | 3412                     | <b>Contact name</b><br>Name of a contact, such as a department or employee.<br>Contact name, in case DE:3139 = 'IC'.                                  | C an..256              | O                      |

**Segment:** **COM** **Communication Contact**  
**Position:** 00190  
**Group:** Segment Group 5 (Contact Information)      Conditional (Dependent)  
**Level:** 3  
**Usage:** Conditional (Optional)  
**Max Use:** 4  
**Purpose:** A segment to identify a communication number of a person or department to whom communication should be directed.

**Dependency Notes:****Semantic Notes:****Comments:**

**Notes:** Example: Contact by phone number 229390700.

COM+229390700:TE'

Example: Contact by email jose.silva@mybusiness.com

COM+JOSE.SILVA(A)MYBUSINESS.COM:EM'

**Data Element Summary**

| <u>Data Element</u> | <u>Component Element</u> | <u>Name</u>  | <u>Base Attributes</u> |         | <u>User Attributes</u> |
|---------------------|--------------------------|--|------------------------|---------|------------------------|
| C076                |                          | COMMUNICATION CONTACT  | M                      | 3       | M                      |
|                     |                          | Communication number of a department or employee in a specified channel.           |                        |         |                        |
|                     | 3148                     | Communication address identifier   | M                      | an..512 | M                      |
|                     |                          | To identify a communication address.   |                        |         |                        |
|                     | 3155                     | Communication means type code  | M                      | an..3   | M                      |
|                     |                          | Code specifying the type of communication address.                                 |                        |         |                        |
|                     |                          | AL      Cellular phone   |                        |         |                        |
|                     |                          | EM      Electronic mail  |                        |         |                        |
|                     |                          | FX      Telefax  |                        |         |                        |
|                     |                          | TE      Telephone  |                        |         |                        |
|                     |                          | TL      Telex  |                        |         |                        |
|                     |                          | Only for compatibility with SMDG proposal. It will not be processed by JUL system. |                        |         |                        |
|                     |                          | XF      X.400 address  |                        |         |                        |
|                     |                          | Only for compatibility with SMDG proposal. It will not be processed by JUL system. |                        |         |                        |

**Group:** **GID** Segment Group 6: Goods Item Details  
**Position:** 00200  
**Group:**  
**Level:** 1  
**Usage:** Conditional (Dependent)  
**Max Use:** 999  
**Purpose:** A group of segments to describe the goods items (to be) stuffed in containers.  
**Notes:** Usage complemented in local document if mentioned in that document.

It is used to declare the presence of dangerous goods identified in SG9 (DGS) inside the transport equipment identified in segment SGP.

#### Segment Summary

|   | <b>Pos.</b>       | <b>Seg.</b>      |   | <b>Req.</b>        | <b>Max.</b>       | <b>Group:</b>        |
|---|-------------------|------------------|---|--------------------|-------------------|----------------------|
|   | <b><u>No.</u></b> | <b><u>ID</u></b> | <b><u>Name</u></b>                        | <b><u>Des.</u></b> | <b><u>Use</u></b> | <b><u>Repeat</u></b> |
| M | 00210             | GID              | Goods Item Details                        | M                  | 1                 |                      |
|   | 00260             |                  | Segment Group 8: Document/Message Details | C                  |                   | 9                    |
| O | 00300             | SGP              | Split Goods Placement                     | C                  | 999               |                      |
|   | 00310             |                  | Segment Group 9: Dangerous Goods          | C                  |                   | 99                   |

**Segment:** **GID Goods Item Details**  
**Position:** 00210 (Trigger Segment)  
**Group:** Segment Group 6 (Goods Item Details) Conditional (Dependent)  
**Level:** 1  
**Usage:** Mandatory  
**Max Use:** 1  
**Purpose:** A segment to identify a goods item (to be) stuffed in containers. A goods item can be identified by a goods item number.

**Dependency Notes:****Semantic Notes:****Comments:**

**Notes:** Example: 7th dangerous goods item in the list.

GID+7'

**Data Element Summary**

| <u>Data Element</u> | <u>Component Element</u> | <u>Name</u>  | <u>Base Attributes</u> |   |        | <u>User Attributes</u> |
|---------------------|--------------------------|--|------------------------|---|--------|------------------------|
| 1496                |                          | <b>GOODS ITEM NUMBER</b><br>To specify a goods item within a consignment.                            | C                      | 1 | an..6  | R                      |
| C213                |                          | <b>NUMBER AND TYPE OF PACKAGES</b><br>Number and type of individual parts of a shipment.             | C                      | 1 |        | X                      |
|                     | 7224                     | <b>Package quantity</b><br>To specify the number of packages.  | C                      |   | n..8   | X                      |
|                     | 7065                     | <b>Package type description code</b><br>Code specifying the type of package.                         | C                      |   | an..17 | X                      |
|                     | 1131                     | <b>Code list identification code</b><br>Code identifying a user or association maintained code list. | C                      |   | an..17 | X                      |
|                     | 3055                     | <b>Code list responsible agency code</b><br>Code specifying the agency responsible for a code list.  | C                      |   | an..3  | X                      |
|                     | 7064                     | <b>Type of packages</b><br>Description of the form in which goods are presented.                     | C                      |   | an..35 | X                      |
|                     | 7233                     | <b>Packaging related description code</b><br>Code specifying information related to packaging.       | C                      |   | an..3  | X                      |
| C213                |                          | <b>NUMBER AND TYPE OF PACKAGES</b><br>Number and type of individual parts of a shipment.             | C                      | 1 |        | X                      |
|                     | 7224                     | <b>Package quantity</b><br>To specify the number of packages.  | C                      |   | n..8   | X                      |
|                     | 7065                     | <b>Package type description code</b><br>Code specifying the type of package.                         | C                      |   | an..17 | X                      |
|                     | 1131                     | <b>Code list identification code</b><br>Code identifying a user or association maintained code list. | C                      |   | an..17 | X                      |

|             |             |  |          |               |          |
|-------------|-------------|--|----------|---------------|----------|
|             | <b>3055</b> | <b>Code list responsible agency code</b>                     | <b>C</b> | <b>an..3</b>  | <b>X</b> |
|             |             | Code specifying the agency responsible for a code list.      |          |               |          |
|             | <b>7064</b> | <b>Type of packages</b>                                      | <b>C</b> | <b>an..35</b> | <b>X</b> |
|             |             | Description of the form in which goods are presented.        |          |               |          |
|             | <b>7233</b> | <b>Packaging related description code</b>                    | <b>C</b> | <b>an..3</b>  | <b>X</b> |
|             |             | Code specifying information related to packaging.            |          |               |          |
| <b>C213</b> |             | <b>NUMBER AND TYPE OF PACKAGES</b>                           | <b>C</b> | <b>1</b>      | <b>X</b> |
|             |             | Number and type of individual parts of a shipment.           |          |               |          |
|             | <b>7224</b> | <b>Package quantity</b>                                      | <b>C</b> | <b>n..8</b>   | <b>X</b> |
|             |             | To specify the number of packages.                           |          |               |          |
|             | <b>7065</b> | <b>Package type description code</b>                         | <b>C</b> | <b>an..17</b> | <b>X</b> |
|             |             | Code specifying the type of package.                         |          |               |          |
|             | <b>1131</b> | <b>Code list identification code</b>                         | <b>C</b> | <b>an..17</b> | <b>X</b> |
|             |             | Code identifying a user or association maintained code list. |          |               |          |
|             | <b>3055</b> | <b>Code list responsible agency code</b>                     | <b>C</b> | <b>an..3</b>  | <b>X</b> |
|             |             | Code specifying the agency responsible for a code list.      |          |               |          |
|             | <b>7064</b> | <b>Type of packages</b>                                      | <b>C</b> | <b>an..35</b> | <b>X</b> |
|             |             | Description of the form in which goods are presented.        |          |               |          |
|             | <b>7233</b> | <b>Packaging related description code</b>                    | <b>C</b> | <b>an..3</b>  | <b>X</b> |
|             |             | Code specifying information related to packaging.            |          |               |          |
| <b>C213</b> |             | <b>NUMBER AND TYPE OF PACKAGES</b>                           | <b>C</b> | <b>1</b>      | <b>X</b> |
|             |             | Number and type of individual parts of a shipment.           |          |               |          |
|             | <b>7224</b> | <b>Package quantity</b>                                      | <b>C</b> | <b>n..8</b>   | <b>X</b> |
|             |             | To specify the number of packages.                           |          |               |          |
|             | <b>7065</b> | <b>Package type description code</b>                         | <b>C</b> | <b>an..17</b> | <b>X</b> |
|             |             | Code specifying the type of package.                         |          |               |          |
|             | <b>1131</b> | <b>Code list identification code</b>                         | <b>C</b> | <b>an..17</b> | <b>X</b> |
|             |             | Code identifying a user or association maintained code list. |          |               |          |
|             | <b>3055</b> | <b>Code list responsible agency code</b>                     | <b>C</b> | <b>an..3</b>  | <b>X</b> |
|             |             | Code specifying the agency responsible for a code list.      |          |               |          |
|             | <b>7064</b> | <b>Type of packages</b>                                      | <b>C</b> | <b>an..35</b> | <b>X</b> |
|             |             | Description of the form in which goods are presented.        |          |               |          |
|             | <b>7233</b> | <b>Packaging related description code</b>                    | <b>C</b> | <b>an..3</b>  | <b>X</b> |
|             |             | Code specifying information related to packaging.            |          |               |          |
| <b>C213</b> |             | <b>NUMBER AND TYPE OF PACKAGES</b>                           | <b>C</b> | <b>1</b>      | <b>X</b> |
|             |             | Number and type of individual parts of a shipment.           |          |               |          |
|             | <b>7224</b> | <b>Package quantity</b>                                      | <b>C</b> | <b>n..8</b>   | <b>X</b> |
|             |             | To specify the number of packages.                           |          |               |          |
|             | <b>7065</b> | <b>Package type description code</b>                         | <b>C</b> | <b>an..17</b> | <b>X</b> |
|             |             | Code specifying the type of package.                         |          |               |          |

|             |  |          |               |          |
|-------------|--|----------|---------------|----------|
| <b>1131</b> | <b>Code list identification code</b>                         | <b>C</b> | <b>an..17</b> | <b>X</b> |
|             | Code identifying a user or association maintained code list. |          |               |          |
| <b>3055</b> | <b>Code list responsible agency code</b>                     | <b>C</b> | <b>an..3</b>  | <b>X</b> |
|             | Code specifying the agency responsible for a code list.      |          |               |          |
| <b>7064</b> | <b>Type of packages</b>                                      | <b>C</b> | <b>an..35</b> | <b>X</b> |
|             | Description of the form in which goods are presented.        |          |               |          |
| <b>7233</b> | <b>Packaging related description code</b>                    | <b>C</b> | <b>an..3</b>  | <b>X</b> |
|             | Code specifying information related to packaging.            |          |               |          |



**Group:** **DOC** Segment Group 8: Document/Message Details  
**Position:** 00260  
**Group:** Segment Group 6 (Goods Item Details) Conditional (Dependent)  
**Level:** 2  
**Usage:** Conditional (Optional)  
**Max Use:** 9  
**Purpose:** A group of segments to specify documents related to the goods item.  
**Notes:** Only for compatibility with SMDG proposal. It will not be processed by JUL system.

#### Segment Summary

|   | <b>Pos.</b>       | <b>Seg.</b>      |                               | <b>Req.</b>        | <b>Max.</b>       | <b>Group:</b>        |
|---|-------------------|------------------|-------------------------------|--------------------|-------------------|----------------------|
|   | <b><u>No.</u></b> | <b><u>ID</u></b> | <b><u>Name</u></b>            | <b><u>Des.</u></b> | <b><u>Use</u></b> | <b><u>Repeat</u></b> |
| M | 00270             | DOC              | Document/Message Details      | M                  | 1                 |                      |
| O | 00280             | DTM              | Date/Time/Period              | C                  | 9                 |                      |
| O | 00290             | LOC              | Place/Location Identification | C                  | 9                 |                      |

**Segment:** **DOC** Document/Message Details  
**Position:** 00270 (Trigger Segment)  
**Group:** Segment Group 8 (Document/Message Details) Conditional (Optional)  
**Level:** 2  
**Usage:** Mandatory  
**Max Use:** 1  
**Purpose:** A segment to indicate a document related to the goods item.  
**Dependency Notes:**  
**Semantic Notes:**  
**Comments:**  
**Notes:** Only for compatibility with SMDG proposal. It will not be processed by JUL system.

## Data Element Summary

| Data Element | Component Element   | Name  | Base       |        | User       |
|--------------|---|---|------------|--------|------------|
|              |   |   | Attributes |        | Attributes |
| C002         |   | <b>DOCUMENT/MESSAGE NAME</b>  | M          | 1      | M          |
|              |   | Identification of a type of document/message by code or name. Code preferred.   |            |        |            |
|              | 1001  | <b>Document name code</b>   | C          | an..3  | O          |
|              |   | Code specifying the document name.<br>Refer to D.16A Data Element Dictionary for acceptable code values.                      |            |        |            |
|              | 1131  | <b>Code list identification code</b>  | C          | an..17 | O          |
|              |   | Code identifying a user or association maintained code list.  |            |        |            |
| C503         | 3055  | <b>Code list responsible agency code</b>  | C          | an..3  | O          |
|              |   | Code specifying the agency responsible for a code list.<br>Refer to D.16A Data Element Dictionary for acceptable code values. |            |        |            |
|              | 1000  | <b>Document name</b>  | C          | an..35 | O          |
|              |   | Name of a document.   |            |        |            |
|              |   | <b>DOCUMENT/MESSAGE DETAILS</b>   | C          | 1      | O          |
|              |   | Identification of document/message by number, status, source and/or language.   |            |        |            |
|              | 1004  | <b>Document identifier</b>  | C          | an..70 | O          |
|              |   | To identify a document.   |            |        |            |
|              | 1373  | <b>Document status code</b>   | C          | an..3  | O          |
|              | Code specifying the status of a document.<br>Refer to D.16A Data Element Dictionary for acceptable code values. |   |            |        |            |
|              | 1366  | <b>Document source description</b>  | C          | an..70 | O          |
|              | Free form description of the source of a document.  |   |            |        |            |
|              | 3453  | <b>Language name code</b>   | C          | an..3  | O          |
|              | Code specifying the language name.  |   |            |        |            |
|              | 1056  | <b>Version identifier</b>   | C          | an..9  | O          |
|              | To identify a version.  |   |            |        |            |
|              | 1060  | <b>Revision identifier</b>  | C          | an..6  | O          |

|             |  |          |          |              |          |
|-------------|--|----------|----------|--------------|----------|
|             | To identify a revision.  |          |          |              |          |
| <b>3153</b> | <b>COMMUNICATION MEDIUM TYPE CODE</b>                              | <b>C</b> | <b>1</b> | <b>an..3</b> | <b>O</b> |
|             | Code specifying the type of communication medium.                  |          |          |              |          |
|             | Refer to D.16A Data Element Dictionary for acceptable code values. |          |          |              |          |
| <b>1220</b> | <b>DOCUMENT COPIES REQUIRED QUANTITY</b>                           | <b>C</b> | <b>1</b> | <b>n..2</b>  | <b>O</b> |
|             | Quantity of document copies required.                              |          |          |              |          |
| <b>1218</b> | <b>DOCUMENT ORIGINALS REQUIRED QUANTITY</b>                        | <b>C</b> | <b>1</b> | <b>n..2</b>  | <b>O</b> |
|             | Quantity of document originals required.                           |          |          |              |          |

**Segment:** **DTM** Date/Time/Period  
**Position:** 00280  
**Group:** Segment Group 8 (Document/Message Details) Conditional (Optional)  
**Level:** 3  
**Usage:** Conditional (Optional)  
**Max Use:** 9  
**Purpose:** A segment to specify the date/time related to the document, such as: -  
document/message date/time - expiry date.

**Dependency Notes:****Semantic Notes:****Comments:**

**Notes:** Only for compatibility with SMDG proposal. It will not be processed by JUL system.

**Data Element Summary**

| <b>Data Element</b> | <b>Component Element</b> | <b>Name</b>   | <b>Base Attributes</b> |               | <b>User Attributes</b> |
|---------------------|--------------------------|---|------------------------|---------------|------------------------|
| <b>C507</b>         |                          | <b>DATE/TIME/PERIOD</b>   | <b>M</b>               | <b>1</b>      | <b>M</b>               |
|                     |                          | Date and/or time, or period relevant to the specified date/time/period type.  |                        |               |                        |
|                     | <b>2005</b>              | <b>Date or time or period function code qualifier</b>   | <b>M</b>               | <b>an..3</b>  | <b>M</b>               |
|                     |                          | Code qualifying the function of a date, time or period.<br>Refer to D.16A Data Element Dictionary for acceptable code values.       |                        |               |                        |
|                     | <b>2380</b>              | <b>Date or time or period text</b>  | <b>C</b>               | <b>an..35</b> | <b>O</b>               |
|                     |                          | The value of a date, a date and time, a time or of a period in a specified representation.  |                        |               |                        |
|                     | <b>2379</b>              | <b>Date or time or period format code</b>   | <b>C</b>               | <b>an..3</b>  | <b>O</b>               |
|                     |                          | Code specifying the representation of a date, time or period.<br>Refer to D.16A Data Element Dictionary for acceptable code values. |                        |               |                        |

**Segment:** **LOC** Place/Location Identification  
**Position:** 00290  
**Group:** Segment Group 8 (Document/Message Details) Conditional (Optional)  
**Level:** 3  
**Usage:** Conditional (Optional)  
**Max Use:** 9  
**Purpose:** A segment to identify a location related to the document, such as: - place of document issue

**Dependency Notes:****Semantic Notes:****Comments:**

**Notes:** Only for compatibility with SMDG proposal. It will not be processed by JUL system.

**Data Element Summary**

| <u>Data Element</u> | <u>Component Element</u> | <u>Name</u>   | <u>Base Attributes</u> |         | <u>User Attributes</u> |
|---------------------|--------------------------|---|------------------------|---------|------------------------|
| 3227                |                          | <b>LOCATION FUNCTION CODE QUALIFIER</b><br>Code identifying the function of a location.<br>Refer to D.16A Data Element Dictionary for acceptable code values.             | M                      | 1 an..3 | M                      |
| C517                |                          | <b>LOCATION IDENTIFICATION</b><br>Identification of a location by code or name.   | C                      | 1       | O                      |
|                     | 3225                     | <b>Location identifier</b><br>To identify a location.   | C                      | an..35  | O                      |
|                     | 1131                     | <b>Code list identification code</b><br>Code identifying a user or association maintained code list.  | C                      | an..17  | O                      |
|                     | 3055                     | <b>Code list responsible agency code</b><br>Code specifying the agency responsible for a code list.<br>Refer to D.16A Data Element Dictionary for acceptable code values. | C                      | an..3   | O                      |
|                     | 3224                     | <b>Location name</b><br>Name of the location.   | C                      | an..256 | O                      |
| C519                |                          | <b>RELATED LOCATION ONE IDENTIFICATION</b><br>Identification the first related location by code or name.  | C                      | 1       | O                      |
|                     | 3223                     | <b>First related location identifier</b><br>To identify a first related location.   | C                      | an..35  | O                      |
|                     | 1131                     | <b>Code list identification code</b><br>Code identifying a user or association maintained code list.  | C                      | an..17  | O                      |
|                     | 3055                     | <b>Code list responsible agency code</b><br>Code specifying the agency responsible for a code list.<br>Refer to D.16A Data Element Dictionary for acceptable code values. | C                      | an..3   | O                      |
|                     | 3222                     | <b>First related location name</b><br>Name of first related location.   | C                      | an..70  | O                      |

|             |   |          |                |          |
|-------------|---|----------|----------------|----------|
| <b>C553</b> | <b>RELATED LOCATION TWO IDENTIFICATION</b>  | <b>C</b> | <b>1</b>       | <b>O</b> |
|             | Identification of second related location by code or name.  |          |                |          |
| <b>3233</b> | <b>Second related location identifier</b>   | <b>C</b> | <b>an..35</b>  | <b>O</b> |
|             | To identify a second related location.  |          |                |          |
| <b>1131</b> | <b>Code list identification code</b>  | <b>C</b> | <b>an..17</b>  | <b>O</b> |
|             | Code identifying a user or association maintained code list.  |          |                |          |
| <b>3055</b> | <b>Code list responsible agency code</b>  | <b>C</b> | <b>an..3</b>   | <b>O</b> |
|             | Code specifying the agency responsible for a code list.<br>Refer to D.16A Data Element Dictionary for acceptable code values. |          |                |          |
| <b>3232</b> | <b>Second related location name</b>   | <b>C</b> | <b>an..70</b>  | <b>O</b> |
|             | Name of the second related location.  |          |                |          |
| <b>5479</b> | <b>RELATION CODE</b>  | <b>C</b> | <b>1 an..3</b> | <b>O</b> |
|             | Code specifying a relation.   |          |                |          |

**Segment:** **SGP** Split Goods Placement  
**Position:** 00300  
**Group:** Segment Group 6 (Goods Item Details) Conditional (Dependent)  
**Level:** 2  
**Usage:** Conditional (Optional)  
**Max Use:** 999  
**Purpose:** A segment to identify the containers in which goods are transported.

**Dependency Notes:****Semantic Notes:****Comments:**

**Notes:** Example: Dangerous goods are inside container CLHU3420210.

SGP+CLHU3420210'

**Data Element Summary**

| <u>Data Element</u> | <u>Component Element</u> | <u>Name</u>   | <u>Base Attributes</u> |        | <u>User Attributes</u> |
|---------------------|--------------------------|---|------------------------|--------|------------------------|
| C237                |                          | <b>EQUIPMENT IDENTIFICATION</b><br>Marks (letters/numbers) identifying equipment.   | M                      | 1      | M                      |
|                     | 8260                     | <b>Equipment identifier</b><br>To identify equipment.   | C                      | an..17 | R                      |
|                     | 1131                     | <b>Code list identification code</b>  | C                      | an..17 | X                      |
|                     | 3055                     | <b>Code list responsible agency code</b>  | C                      | an..3  | X                      |
|                     | 3207                     | <b>Country identifier</b>   | C                      | an..3  | X                      |
| 7224                |                          | <b>PACKAGE QUANTITY</b><br>To specify the number of packages.<br>Only for compatibility with SMDG proposal. It will not be processed by JUL system. | C                      | 1 n..8 | O                      |

**Group:** **DGS** Segment Group 9: Dangerous Goods  
**Position:** 00310  
**Group:** Segment Group 6 (Goods Item Details) Conditional (Dependent)  
**Level:** 2  
**Usage:** Conditional (Optional)  
**Max Use:** 99  
**Purpose:** A segment group to specify dangerous goods.  
**Notes:** This group identifies the dangerous goods inside the transport equipment identified in the SG6:SGP occurrences.

#### Segment Summary

|   | <b>Pos.</b>       | <b>Seg.</b>      |                    | <b>Req.</b>        | <b>Max.</b>       | <b>Group:</b>        |
|---|-------------------|------------------|--------------------|--------------------|-------------------|----------------------|
|   | <b><u>No.</u></b> | <b><u>ID</u></b> | <b><u>Name</u></b> | <b><u>Des.</u></b> | <b><u>Use</u></b> | <b><u>Repeat</u></b> |
| M | 00320             | DGS              | Dangerous Goods    | M                  | 1                 |                      |



**Segment:** **DGS** Dangerous Goods  
**Position:** 00320 (Trigger Segment)  
**Group:** Segment Group 9 (Dangerous Goods) Conditional (Optional)  
**Level:** 2  
**Usage:** Mandatory  
**Max Use:** 1  
**Purpose:** A segment to indicate the dangerous goods regulations for the corresponding mode of transport, class of dangerous goods, and dangerous goods code.

**Dependency Notes:****Semantic Notes:****Comments:**

**Notes:** Example: Goods of IMO class 3, UMDG 1300.

DGS+IMD+3+1300'

**Data Element Summary**

| <u>Data Element</u> | <u>Component Element</u> | <u>Name</u>   | <u>Base Attributes</u> |   |        | <u>User Attributes</u> |
|---------------------|--------------------------|---|------------------------|---|--------|------------------------|
| 8273                |                          | <b>DANGEROUS GOODS REGULATIONS CODE</b><br>Code specifying a dangerous goods regulation.<br>IMD IMO IMDG code   | C                      | 1 | an..3  | R                      |
| C205                |                          | <b>HAZARD CODE</b><br>The identification of the dangerous goods in code.  | C                      | 1 |        | R                      |
|                     | 8351                     | <b>Hazard identification code</b><br>Code identifying a hazard.   | M                      |   | an..7  | M                      |
|                     | 8078                     | <b>Additional hazard classification identifier</b>  | C                      |   | an..7  | X                      |
|                     | 8092                     | <b>Hazard code version identifier</b>   | C                      |   | an..10 | X                      |
| C234                |                          | <b>UNDG INFORMATION</b><br>Information on dangerous goods, taken from the United Nations Dangerous Goods classification.  | C                      | 1 |        | R                      |
|                     | 7124                     | <b>United Nations Dangerous Goods (UNDG) identifier</b><br>The unique serial number assigned within the United Nations to substances and articles contained in a list of the dangerous goods most commonly carried. | C                      |   | n4     | O                      |
|                     | 7088                     | <b>Dangerous goods flashpoint description</b>   | C                      |   | an..8  | X                      |
| C223                |                          | <b>DANGEROUS GOODS SHIPMENT FLASHPOINT</b><br>Temperature at which a vapor can be ignited as per ISO 1523/73.   | C                      | 1 |        | X                      |
|                     | 7106                     | <b>Shipment flashpoint degree</b><br>To specify the value of the flashpoint of a shipment.  | C                      |   | n3     | X                      |
|                     | 6411                     | <b>Measurement unit code</b><br>Code specifying the unit of measurement.  | C                      |   | an..8  | X                      |
| 8339                |                          | <b>PACKAGING DANGER LEVEL CODE</b>  | C                      | 1 | an..3  | O                      |

|      |   |   |   |        |   |
|------|---|---|---|--------|---|
|      | Code specifying the level of danger for which the packaging must cater.<br>Refer to D.16A Data Element Dictionary for acceptable code values. |   |   |        |   |
| 8364 | <b>EMERGENCY PROCEDURE FOR SHIPS IDENTIFIER</b>   | C | 1 | an..8  | X |
| 8410 | <b>HAZARD MEDICAL FIRST AID GUIDE IDENTIFIER</b>  | C | 1 | an..4  | X |
| 8126 | <b>TRANSPORT EMERGENCY CARD IDENTIFIER</b>  | C | 1 | an..10 | X |
| C235 | <b>HAZARD IDENTIFICATION PLACARD DETAILS</b>  | C | 1 |        | X |
|      | These numbers appear on the hazard identification placard required on the means of transport.   |   |   |        |   |
| 8158 | <b>Orange hazard placard upper part identifier</b>  | C |   | an..4  | X |
|      | To specify the identity number for the upper part of the orange hazard placard required on the means of transport.                            |   |   |        |   |
| 8186 | <b>Orange hazard placard lower part identifier</b>  | C |   | an4    | X |
|      | To specify the identity number for the lower part of the orange hazard placard required on the means of transport.                            |   |   |        |   |
| C236 | <b>DANGEROUS GOODS LABEL</b>  | C | 1 |        | X |
|      | Markings identifying the type of hazardous goods and similar information.   |   |   |        |   |
| 8246 | <b>Dangerous goods marking identifier</b>   | C |   | an..4  | X |
|      | To identify the marking of dangerous goods.   |   |   |        |   |
| 8246 | <b>Dangerous goods marking identifier</b>   | C |   | an..4  | X |
|      | To identify the marking of dangerous goods.   |   |   |        |   |
| 8246 | <b>Dangerous goods marking identifier</b>   | C |   | an..4  | X |
|      | To identify the marking of dangerous goods.   |   |   |        |   |
| 8246 | <b>Dangerous goods marking identifier</b>   | C |   | an..4  | X |
|      | To identify the marking of dangerous goods.   |   |   |        |   |
| 8255 | <b>PACKING INSTRUCTION TYPE CODE</b>  | C | 1 | an..3  | X |
| 8179 | <b>TRANSPORT MEANS DESCRIPTION CODE</b>   | C | 1 | an..8  | X |
| 8211 | <b>HAZARDOUS CARGO TRANSPORT AUTHORISATION CODE</b>   | C | 1 | an..3  | X |
| C289 | <b>TUNNEL RESTRICTION</b>   | C | 1 |        | X |
|      | To specify a restriction for transport through tunnels.   |   |   |        |   |
| 8461 | <b>Tunnel Restriction Code</b>  | C |   | an..6  | X |
|      | A code indicating a restriction for transport through tunnels.  |   |   |        |   |
| 1131 | <b>Code list identification code</b>  | C |   | an..17 | X |
|      | Code identifying a user or association maintained code list.  |   |   |        |   |
| 3055 | <b>Code list responsible agency code</b>  | C |   | an..3  | X |
|      | Code specifying the agency responsible for a code list.   |   |   |        |   |

|                  |  |
|------------------|--|
| <b>Group:</b>    | <b>EQD</b> Segment Group 11: Equipment Details   |
| <b>Position:</b> | 00380  |
| <b>Group:</b>    |  |
| <b>Level:</b>    | 1  |
| <b>Usage:</b>    | Mandatory  |
| <b>Max Use:</b>  | 999  |
| <b>Purpose:</b>  | A group of segments to specify containers in which goods are transported.  |
| <b>Notes:</b>    | <p>If the group is to notify of future movements of transport equipment, then the equipment must be identified and its tare must be provided. If it is full then information about the seal shall be provided. Also in element EQD:8155 and if the equipment is a container, the container ISO type according to ISO 6346 (2nd and 3rd editions) is sent. In this standard the first number of this codification provides the container length. If unknown then use the code defined for element EQD:8155 by UN/EDIFACT.</p> <p>The group is also to notify of future movements of general cargo (EQD:8053 = 'BB').</p> <p>In this case the group should contain information on a general cargo shipment of goods (shipment hereafter to simplify). This shipment can be identified by the transport document id only (in segment RFF), or complemented by a reference number provided by the terminal operator (also in segment RFF having RFF:1153 = 'UCN').</p> <p>Complementary to the weight (in segment MEA), information on the number of volumes should be provided (in segment FTX with FTX:4451 = 'PAC'), considering that bulk cargo count as 1 volume.</p> <p>Additionally data on Marks &amp; Numbers shall be provided preferably. However, it is possible that in a single shipment, several Marks &amp; Numbers may exist. Due to COPINO message structure definition, comparing with the possible number of different Marks &amp; Numbers, the following usage was defined.</p> <p>Assuming a scenario where there are 2 shipments, but belonging to the same Bill of Lading, with id OPT51228, discharged from the means of transport (import). One shipment with total weight 350 Kg, identified by 00001 (id provided by the terminal operator), has 2 volumes. One volume is marked with VOL32, the other volume is marked with VOL47. The other shipment, with total weight of 410 Kg, identified by 00002 (id provided by the terminal operator), has 3 volumes: DD78, FF36 and LL14.</p> <p>One issue here is that the weight of each volume may not be available.</p> <p>Assuming that these shipments are going to leave the port by truck, these pick-up notification must be reported. However, how this is done depends on the method the shipments will be distributed by the trucks, and the number of trucks involved. The alternatives are multiple, but they can be grouped in a finite set.</p> <p>Considering the sum of the total weight of both shipments, on one end of the range of solutions is to have both shipments carried by the same truck. Another alternative</p> |

is to have each shipment spread over several trucks, but each truck carrying volumes from just one shipment. On the other end of the range is to have both shipments spread over several trucks and each truck (at least some of them) carrying volumes from both shipments.

Leaving on the side the terminal operations' characteristics of each alternative, each one implies with the way the pick-up notification is reported. However, this MIG accomodates some flexibility to represent the information of each alternative. It is a sender's option.

As an example, it is assumed that each shipment will move out of the port by road in its own set of trucks from the same transport company: the 2 volume shipment in one truck, the 3 volume shipment in two trucks. It is also assumed that each truck is weighted before leaving the port (for simplicity truck tare is ignored). However the weight could be obtained based on the each declared volume weight. Finally it is assumed that one message is being reported for each pair shipment/truck.

This COPINO MIG usage for this example scenario will be the following. Send one message for each pair shipment/truck. But when multiple volumes (or different Marks & Numbers) are present in the same truck, then send one occurrence of SG11 for each Marks & Numbers in stake. In each these occurrences, use segment RFF to identify the Bill of Lading (or other transport document), the complementary reference provided by the terminal operator and the Marks & Numbers. Also, in the occurrence of segment MEA, the weight obtained after weighting the truck should be present, and in segment FTX (with FTX:4451 = 'PAC') the number of volumes on the truck.

Regard that the COPINO message is related with inland transport. So the reference to inland means of transport (truck, train, etc) is done at message header level, and not at detail level, in SG11(EQD) in this case, as happens in similar CO\* messages.

For the described scenario, a possible sequence of messages and sequence of segments could be the following:

```
==> MESSAGE 1: shipment 00001, 2 volumes
```

```
...
TDT+30++3++::SARDAO+++35-AB-65:146'
...
EQD+BB++++3+6'
RFF+BM:OPT51228'
RFF+UCN:00001'
RFF+ACH:VOL32'
...
MEA+AAE+AAB+KGM:350'
...
FTX+PAC+++1:...'
...
EQD+BB++++3+6'
```

```

RFF+BM:OPT51228'
RFF+UCN:00001'
RFF+ACH:VOL47'
...
MEA+AAE+AAB+KGM:350'
...
FTX+PAC+++1:... '
...

==> MESSAGE 2: shipment 0002, 1 volume

...
TDT+30++3+++::SARDAO+++87-CH-45:146'
...
EQD+BB++++3+6'
RFF+BM:OPT51228'
RFF+UCN:00002'
RFF+ACH:DD78'
...
MEA+AAE+AAB+KGM:270'
...
FTX+PAC+++3:... '
...

==> MESSAGE 3: shipment 0002, 2 volumes

...
TDT+30++3+++::SARDAO+++62-LM-71:146'
...
EQD+BB++++3+6'
RFF+BM:OPT51228'
RFF+UCN:00002'
RFF+ACH:FF36'
...
MEA+AAE+AAB+KGM:140'
...
FTX+PAC+++2:... '
...
EQD+BB++++3+6'
RFF+BM:OPT51228'
RFF+UCN:00002'
RFF+ACH:LL14'
...
MEA+AAE+AAB+KGM:140'
...
FTX+PAC+++2:... '
...

```

This structure usage allows the receiver to reproduce the set of Marks & Numbers of each particular shipment, even if it identified only by Bill of Lading (or other

transport document).

If there are no marks associated with the shipment, then report "No Marks".

### Segment Summary

|   | <b>Pos.</b>       | <b>Seg.</b>      |   | <b>Req.</b>        | <b>Max.</b>       | <b>Group:</b>        |
|---|-------------------|------------------|---|--------------------|-------------------|----------------------|
|   | <b><u>No.</u></b> | <b><u>ID</u></b> | <b><u>Name</u></b>                      | <b><u>Des.</u></b> | <b><u>Use</u></b> | <b><u>Repeat</u></b> |
| M | 00390             | EQD              | Equipment Details                       | M                  | 1                 |                      |
| O | 00400             | RFF              | Reference                               | C                  | 4                 |                      |
| O | 00410             | EQN              | Number of Units                         | C                  | 1                 |                      |
| R | 00420             | MEA              | Measurements                            | C                  | 3                 |                      |
| O | 00430             | DIM              | Dimensions                              | C                  | 5                 |                      |
| D | 00440             | FTX              | Free Text                               | C                  | 9                 |                      |
| D | 00460             | SEL              | Seal Number                             | C                  | 7                 |                      |
| D | 00470             | EQA              | Attached Equipment                      | C                  | 1                 |                      |
| O | 00480             | HAN              | Handling Instructions                   | C                  | 9                 |                      |
|   | 00490             |                  | Segment Group 12: Transport Information | C                  |                   | 2                    |
| O | 00560             | NAD              | Name and Address                        | C                  | 9                 |                      |
|   | 00570             |                  | Segment Group 14: Dangerous Goods       | C                  |                   | 99                   |
|   | 00640             |                  | Segment Group 16: Temperature           | C                  |                   | 9                    |

**Segment:** **EQD** **Equipment Details**  
**Position:** 00390 (Trigger Segment)  
**Group:** Segment Group 11 (Equipment Details)      Mandatory  
**Level:** 1  
**Usage:** Mandatory  
**Max Use:** 1  
**Purpose:** A segment to specify a container, size and type used in the transport and full/empty indication; also to specify the type of rail car on which a related container is transported.

**Dependency Notes:****Semantic Notes:****Comments:**

**Notes:** This segment is to identify the transport equipment, its size/type, its status and if it is full or empty.

It is also used to indicate that the following segments in the group occurrence are related with general cargo (DE:8053 = 'BB').

If the transport equipment is other than an ISO container then DE:8155 shall have the proper value from the EDIFACT code list associated with this element.

If the transport equipment is an ISO container then DE:8155 shall have the ISO type according standard ISO 6346. If this code is unknown then place the proper value from EDIFACT code list associated with this element.

Example: Container CGTU 200311/5, 20 ft, export/load, full.

EQD+CN+CGTU2003115+21:102:6++2+5'

Example: Container GSTU 000029/0, 40 ft General purpose (ISO 40GP), transhipped, empty

EQD+CN+GSTU0000290+40GP:102:5+++6+4'

Example: Trailer Z-53791, import/unload, full

EQD+TE+Z53791+14:102:6+++3+5'

Example: group related with general cargo being imported

EQD+BB++++3+6'

**Data Element Summary**

| <b>Data Element</b> | <b>Component Element</b> | <b>Name</b>                           | <b>Base Attributes</b> |          |              | <b>User Attributes</b> |
|---------------------|--------------------------|---------------------------------------|------------------------|----------|--------------|------------------------|
| <b>8053</b>         |                          | <b>EQUIPMENT TYPE CODE QUALIFIER</b>  | <b>M</b>               | <b>1</b> | <b>an..3</b> | <b>M</b>               |
|                     |                          | Code qualifying a type of equipment.  |                        |          |              |                        |
|                     |                          | BB Un-containerized cargo (breakbulk) |                        |          |              |                        |

|             |  |  |                 |          |
|-------------|--|--|-----------------|----------|
|             |  | This code is to be used when reporting general cargo shipment movement.            |                 |          |
|             | BPP  | Truck and trailer combination being transported                                    |                 |          |
|             |  | It will be processed like 'TE'.  |                 |          |
|             |  | Only for compatibility with SMDG proposal. It will not be processed by JUL system. |                 |          |
|             | CH   | Chassis  |                 |          |
|             |  | It will be treated like 'TE'.  |                 |          |
|             |  | Only for compatibility with SMDG proposal. It will not be processed by JUL system. |                 |          |
|             | CN   | Container  |                 |          |
|             | PA   | Pallet   |                 |          |
|             | PL   | Platform   |                 |          |
|             | RG   | Reefer generator   |                 |          |
|             |  | Only for compatibility with SMDG proposal. It will not be processed by JUL system. |                 |          |
|             | SW   | Swap body  |                 |          |
|             |  | It will be treated like 'CN'.  |                 |          |
|             |  | Only for compatibility with SMDG proposal. It will not be processed by JUL system. |                 |          |
|             | TE   | Trailer  |                 |          |
| <b>C237</b> | <b>EQUIPMENT IDENTIFICATION</b>  |  | <b>C 1</b>      | <b>O</b> |
|             | Marks (letters/numbers) identifying equipment.   |  |                 |          |
|             | Usage complemented in local document if mentioned in that document.  |  |                 |          |
|             | This element is not to be used when reporting general cargo (DE:8053 = 'BB').  |  |                 |          |
|             | <b>8260</b>  | <b>Equipment identifier</b>  | <b>C an..17</b> | <b>R</b> |
|             |  | To identify equipment.   |                 |          |
|             | <b>1131</b>  | <b>Code list identification code</b>   | <b>C an..17</b> | <b>X</b> |
|             | <b>3055</b>  | <b>Code list responsible agency code</b>   | <b>C an..3</b>  | <b>X</b> |
|             | <b>3207</b>  | <b>Country identifier</b>  | <b>C an..3</b>  | <b>X</b> |
| <b>C224</b> | <b>EQUIPMENT SIZE AND TYPE</b>   |  | <b>C 1</b>      | <b>D</b> |
|             | Code and or name identifying size and type of equipment. Code preferred.   |  |                 |          |
|             | This element is not to be used when reporting general cargo shipment (DE:8053 = 'BB') or empty wagon (DE:8053 = 'RF' and DE:8169 = '4').                         |  |                 |          |
|             | <b>8155</b>  | <b>Equipment size and type description code</b>                                    | <b>C an..10</b> | <b>R</b> |
|             |  | Code specifying the size and type of equipment.                                    |                 |          |
|             | In case of ISO container equipment (DE:8053 = 'CN') and if its ISO type is known then send the Size/Type information according to ISO 6346 (2nd or 3rd edition). |  |                 |          |
|             | Otherwise use UN/EDIFACT code list for Data Element 8155.  |  |                 |          |
|             | Refer to D.16A Data Element Dictionary for acceptable code values.   |  |                 |          |
|             | <b>1131</b>  | <b>Code list identification code</b>   | <b>C an..17</b> | <b>O</b> |
|             |  | Code identifying a user or association maintained code list.                       |                 |          |



|             |     |   |          |                |          |  |
|-------------|-----|---|----------|----------------|----------|--|
|             | 102 | Size and type   |          |                |          |  |
| <b>3055</b> |     | <b>Code list responsible agency code</b>  | <b>C</b> | <b>an..3</b>   | <b>O</b> |  |
|             |     | Code specifying the agency responsible for a code list.                                   |          |                |          |  |
|             | 5   | ISO (International Organization for Standardization)                                      |          |                |          |  |
|             | 6   | UN/ECE (United Nations - Economic Commission for Europe)                                  |          |                |          |  |
| <b>8154</b> |     | <b>Equipment size and type description</b>  | <b>C</b> | <b>an..35</b>  | <b>O</b> |  |
|             |     | Free form description of the size and type of equipment.                                  |          |                |          |  |
|             |     | <i>Only for compatibility with SMDG proposal. It will not be processed by JUL system.</i> |          |                |          |  |
| <b>8077</b> |     | <b>EQUIPMENT SUPPLIER CODE</b>  | <b>C</b> | <b>1 an..3</b> | <b>O</b> |  |
|             |     | Code specifying the party that is the supplier of the equipment.                          |          |                |          |  |
|             |     | <i>Only for compatibility with SMDG proposal. It will not be processed by JUL system.</i> |          |                |          |  |
|             |     | Refer to D.16A Data Element Dictionary for acceptable code values.                        |          |                |          |  |
| <b>8249</b> |     | <b>EQUIPMENT STATUS CODE</b>  | <b>C</b> | <b>1 an..3</b> | <b>O</b> |  |
|             |     | Code specifying the status of equipment.  |          |                |          |  |
|             | 2   | Export  |          |                |          |  |
|             | 3   | Import  |          |                |          |  |
| <b>8169</b> |     | <b>FULL OR EMPTY INDICATOR CODE</b>   | <b>C</b> | <b>1 an..3</b> | <b>O</b> |  |
|             |     | Code indicating whether an object is full or empty.                                       |          |                |          |  |
|             | 4   | Empty   |          |                |          |  |
|             | 5   | Full  |          |                |          |  |
|             | 6   | No volume available   |          |                |          |  |
|             |     | To be used in case of general cargo (EQD:8053 = 'BB').                                    |          |                |          |  |
| <b>4233</b> |     | <b>MARKING INSTRUCTIONS CODE</b>  | <b>C</b> | <b>1 an..3</b> | <b>X</b> |  |

**Segment:** **RFF** Reference  
**Position:** 00400  
**Group:** Segment Group 11 (Equipment Details) Mandatory  
**Level:** 2  
**Usage:** Conditional (Optional)  
**Max Use:** 4  
**Purpose:** A segment to specify the identifying number associated with the container, such as:  
- container sequence number - container announcement reference number -  
referring container sequence number - release order reference number -  
acceptance order reference

**Dependency Notes:****Semantic Notes:****Comments:**

**Notes:** Usage complemented in local document if mentioned in that document.

If DE:1153 = 'BM' then the segment is referring the Bill of Lading identification (id). Although not the only transport document used in the business it is the most common. This is particular important when the group is referring to general cargo shipment since the transport document id is needed to identify the shipment. For this reason one occurrence of this segment with DE:1153 = 'BM' is required when EQD:8053 = 'BB'.

If DE:1153 = 'UCN' then the segment is referring a unique identification provided by the terminal operator in the context of general cargo movement (EQD:8053 = 'BB'). This number provides complementary data to identify the shipment, together with the transport document identification, given in another occurrence of this segment.

If DE:1153 = 'ACH' then the segment is referring the Marks & Numbers of a shipment. It must be send if EQD:8053 = 'BB'.

If DE:1153 = 'BN' then the segment is referring to a shipping line/agent booking number/id. Optional.

This reference refers to documents and not to messages.

Example: Booking number NB/0123/03.

RFF+BN:NB/0123/03'

Example: Entrance document 2000/7256.

RFF+ER:2000/7256'

**Data Element Summary**

| <b>Data Element</b> | <b>Component Element</b> | <b>Name</b>                    | <b>Base Attributes</b> |   | <b>User Attributes</b> |
|---------------------|--------------------------|--------------------------------|------------------------|---|------------------------|
| C506                |                          | REFERENCE                      | M                      | 1 | M                      |
|                     |                          | Identification of a reference. |                        |   |                        |

| 1153 | Reference code qualifier   | M | an.3 | M |
|------|--|---|------|---|
|      | Code qualifying a reference.   |   |      |   |
| AAE  | Goods declaration number<br>Only for compatibility with SMDG proposal. It will not be processed by JUL system.                         |   |      |   |
| AAO  | Consignment identifier, consignee assigned<br>Only for compatibility with SMDG proposal. It will not be processed by JUL system.       |   |      |   |
| AA Y | Carrier's agent reference number<br>Only for compatibility with SMDG proposal. It will not be processed by JUL system.                 |   |      |   |
| ABT  | Goods declaration document identifier, Customs<br>Only for compatibility with SMDG proposal. It will not be processed by JUL system.   |   |      |   |
| ABZ  | Vehicle licence number<br>Only for compatibility with SMDG proposal. It will not be processed by JUL system.                           |   |      |   |
| ACA  | Cargo acceptance order reference number<br>Usage complemented in local document if mentioned in that document.                         |   |      |   |
| ACD  | Additional reference number<br>Usage complemented in local document if mentioned in that document.                                     |   |      |   |
| ACH  | Packaging unit identification  |   |      |   |
| AEW  | Empty container bill number<br>Document of Transport. Only applied for empty containers being repositioned.                            |   |      |   |
| AHI  | Transport contract reference number  |   |      |   |
| AKB  | Container prefix<br>Only for compatibility with SMDG proposal. It will not be processed by JUL system.                                 |   |      |   |
| AKG  | Vehicle Identification Number (VIN)<br>Only for compatibility with SMDG proposal. It will not be processed by JUL system.              |   |      |   |
| AKW  | Transport costs reference number<br>Only for compatibility with SMDG proposal. It will not be processed by JUL system.                 |   |      |   |
| ARJ  | Personal identity card number<br>Only for compatibility with SMDG proposal. It will not be processed by JUL system.                    |   |      |   |
| ATW  | Flat rack container bundle identification number<br>Only for compatibility with SMDG proposal. It will not be processed by JUL system. |   |      |   |
| AUA  | Place of positioning reference<br>Only for compatibility with SMDG proposal. It will not be processed by JUL system.                   |   |      |   |
| BM   | Bill of lading number  |   |      |   |

|             |                                 |  |          |               |
|-------------|---------------------------------|--|----------|---------------|
|             | BN                              | Consignment identifier, carrier assigned   |          |               |
|             | BST                             | Blockstow reference  |          |               |
|             | BT                              | Batch number/lot number  |          |               |
|             | CN                              | Carrier's reference number   |          |               |
|             |                                 | Only for compatibility with SMDG proposal. It will not be processed by JUL system.                                 |          |               |
|             | CT                              | Contract number  |          |               |
|             |                                 | Only for compatibility with SMDG proposal. It will not be processed by JUL system.                                 |          |               |
|             | CU                              | Consignment identifier, consignor assigned   |          |               |
|             |                                 | Only for compatibility with SMDG proposal. It will not be processed by JUL system.                                 |          |               |
|             | CV                              | Container operators reference number   |          |               |
|             |                                 | Only for compatibility with SMDG proposal. It will not be processed by JUL system.                                 |          |               |
|             | DR                              | Dock receipt number  |          |               |
|             |                                 | Only for compatibility with SMDG proposal. It will not be processed by JUL system.                                 |          |               |
|             | EQ                              | Equipment number   |          |               |
|             |                                 | To be used in the event that an alternative equipment number is to be quoted in addition to the number in the EQD. |          |               |
|             |                                 | Only for compatibility with SMDG proposal. It will not be processed by JUL system.                                 |          |               |
|             | ER                              | Container/equipment receipt number   |          |               |
|             | MKS                             | Marks and numbers  |          |               |
|             |                                 | Only for compatibility with SMDG proposal. It will be treated like 'ACH'.  |          |               |
|             | RE                              | Release number   |          |               |
|             |                                 | Usage complemented in local document if mentioned in that document.  |          |               |
|             | SQ                              | Equipment sequence number  |          |               |
|             |                                 | Only for compatibility with SMDG proposal. It will not be processed by JUL system.                                 |          |               |
|             | TF                              | Transfer number  |          |               |
|             |                                 | Only for compatibility with SMDG proposal. It will not be processed by JUL system.                                 |          |               |
|             | UCN                             | Unique consignment reference number  |          |               |
|             | VN                              | Order number (vendor)  |          |               |
|             |                                 | Only for compatibility with SMDG proposal. It will not be processed by JUL system.                                 |          |               |
| <b>1154</b> | <b>Reference identifier</b>     |  | <b>C</b> | <b>an..70</b> |
|             | Identifies a reference.         |  |          | <b>O</b>      |
|             |                                 | Usage complemented in local document if mentioned in that document.  |          |               |
| <b>1156</b> | <b>Document line identifier</b> |  | <b>C</b> | <b>an..6</b>  |
| <b>1056</b> | <b>Version identifier</b>       |  | <b>C</b> | <b>an..9</b>  |
| <b>1060</b> | <b>Revision identifier</b>      |  | <b>C</b> | <b>an..6</b>  |



**Segment:** **EQN** Number of Units  
**Position:** 00410  
**Group:** Segment Group 11 (Equipment Details) Mandatory  
**Level:** 2  
**Usage:** Conditional (Optional)  
**Max Use:** 1  
**Purpose:** A segment which can be used in case container numbers are not yet known by the carrier.

**Dependency Notes:****Semantic Notes:****Comments:**

**Notes:** Example: three units

EQN+3'

**Data Element Summary**

| <u>Data Element</u> | <u>Component Element</u> | <u>Name</u>  | <u>Base Attributes</u> |       | <u>User Attributes</u> |
|---------------------|--------------------------|--|------------------------|-------|------------------------|
| C523                |                          | NUMBER OF UNIT DETAILS                             | M                      | 1     | M                      |
|                     |                          | Identification of number of units and its purpose. |                        |       |                        |
|                     | 6350                     | Units quantity                                     | C                      | n..15 | O                      |
|                     |                          | To specify the number of units.                    |                        |       |                        |
|                     | 6353                     | Unit type code qualifier                           | C                      | an..3 | X                      |

**Segment:** **MEA** Measurements  
**Position:** 00420  
**Group:** Segment Group 11 (Equipment Details) Mandatory  
**Level:** 2  
**Usage:** Conditional (Required)  
**Max Use:** 3  
**Purpose:** A segment to specify measurement, other than dimensions, associated with the container, such as: - gross weight

**Dependency Notes:****Semantic Notes:****Comments:**

**Notes:** This segment is used to provide information about the weights related with the equipment or the general cargo shipment.

In compliance with the SOLAS Convention, if the Verified Gross Weight is known, then this must be the value to report.

If the equipment is empty, then a gross weight of zero must be declared.

Example: Equipment gross weight 31703 kilograms.

MEA+AAE+AET+KGM:31703'

Example: Equipment verified gross weight according to SOLAS Convention rules and procedures is 24023 kilograms.

MEA+AAE+VGM+KGM:24023'

Example: General cargo shipment weight 123753 kilograms.

MEA+AAE+AAB+KGM:123753'

**Data Element Summary**

| <b>Data Element</b> | <b>Component Element</b> | <b>Name</b>  | <b>Base Attributes</b> | <b>User Attributes</b> |
|---------------------|--------------------------|--|------------------------|------------------------|
| 6311                |                          | <b>MEASUREMENT PURPOSE CODE QUALIFIER</b>  | 1 an..3                | M                      |
|                     |                          | Code qualifying the purpose of the measurement.  |                        |                        |
|                     | AAE                      | Measurement  |                        |                        |
| C502                |                          | <b>MEASUREMENT DETAILS</b>   | C 1                    | R                      |
|                     |                          | Identification of measurement type.  |                        |                        |
|                     | 6313                     | <b>Measured attribute code</b>   | C an..3                | R                      |
|                     |                          | Code specifying the attribute measured.  |                        |                        |
|                     | AAA                      | Net weight   |                        |                        |
|                     |                          | Only for compatibility with code 'AAL' in SMDG proposal. It will not be processed by JUL system. |                        |                        |
|                     | AAB                      | Goods item gross weight  |                        |                        |

|             |             |   |          |               |  |
|-------------|-------------|---|----------|---------------|--|
|             |             |   |          |               | Use in case of general cargo shipment (EQD:8053 = 'BB').                           |
|             | AAO         | Humidity  |          |               | Only for compatibility with SMDG proposal. It will not be processed by JUL system. |
|             | AAS         | Air flow  |          |               | Only for compatibility with SMDG proposal. It will not be processed by JUL system. |
|             | AAW         | Gross volume  |          |               | Only for compatibility with SMDG proposal. It will not be processed by JUL system. |
|             | ABJ         | Volume  |          |               | Only for compatibility with SMDG proposal. It will not be processed by JUL system. |
|             | AET         | Transport equipment gross weight  |          |               |  |
|             | CD          | Carbondioxide   |          |               | Carbondioxide setting in percentage.   |
|             |             |   |          |               | Only for compatibility with SMDG proposal. It will not be processed by JUL system. |
|             | G           | Gross weight  |          |               | Usage complemented in local document if mentioned in that document.                |
|             |             |   |          |               | It will be treated like 'AET'.   |
|             | MW          | Maximum weight  |          |               | Only for compatibility with SMDG proposal. It will not be processed by JUL system. |
|             | T           | Tare weight   |          |               | Use in case of transport equipment (EQD:8053 <> 'BB').                             |
|             | VGM         | Transport equipment verified gross mass (weight)                                    |          |               |  |
|             | ZO          | Oxygen  |          |               | Only for compatibility with SMDG proposal. It will not be processed by JUL system. |
|             | <b>6321</b> | <b>Measurement significance code</b>  | <b>C</b> | <b>an..3</b>  | <b>X</b>   |
|             | <b>6155</b> | <b>Non-discrete measurement name code</b>   | <b>C</b> | <b>an..17</b> | <b>X</b>   |
|             | <b>6154</b> | <b>Non-discrete measurement name</b>  | <b>C</b> | <b>an..70</b> | <b>X</b>   |
| <b>C174</b> |             | <b>VALUE/RANGE</b>  | <b>C</b> | <b>1</b>      | <b>R</b>   |
|             |             | Measurement value and relevant minimum and maximum values of the measurement range. |          |               |  |
|             | <b>6411</b> | <b>Measurement unit code</b>  | <b>C</b> | <b>an..8</b>  | <b>R</b>   |
|             |             | Code specifying the unit of measurement.  |          |               |  |
|             | FTQ         | Cubic Feet  |          |               | Only for compatibility with SMDG proposal. It will not be processed by JUL system. |
|             | KGM         | Kilograms   |          |               |  |
|             | LBR         | Pounds  |          |               |  |



|             |  |              |          |                |  |
|-------------|--|--------------|----------|----------------|--|
|             |  |              |          |                | Only for compatibility with SMDG proposal. It will not be processed by JUL system. |
|             | MTQ  | Cubic Meters |          |                | Only for compatibility with SMDG proposal. It will not be processed by JUL system. |
|             | PCT  | Percentage   |          |                | Only for compatibility with SMDG proposal. It will not be processed by JUL system. |
| <b>6314</b> | <b>Measure</b>   |              | <b>C</b> | <b>an..18</b>  | <b>R</b>   |
|             | To specify the value of a measurement.   |              |          |                |  |
|             | If the value is not available, put '0'.  |              |          |                |  |
| <b>6162</b> | <b>Range minimum quantity</b>  |              | <b>C</b> | <b>n..18</b>   | <b>X</b>   |
| <b>6152</b> | <b>Range maximum quantity</b>  |              | <b>C</b> | <b>n..18</b>   | <b>X</b>   |
| <b>6432</b> | <b>Significant digits quantity</b>   |              | <b>C</b> | <b>n..2</b>    | <b>X</b>   |
| <b>7383</b> | <b>SURFACE OR LAYER CODE</b>   |              | <b>C</b> | <b>1 an..3</b> | <b>O</b>   |
|             | Code specifying the surface or layer of an object.                                 |              |          |                |  |
|             | Only for compatibility with SMDG proposal. It will not be processed by JUL system. |              |          |                |  |
|             | Refer to D.16A Data Element Dictionary for acceptable code values.                 |              |          |                |  |

**Segment:** **DIM** Dimensions  
**Position:** 00430  
**Group:** Segment Group 11 (Equipment Details) Mandatory  
**Level:** 2  
**Usage:** Conditional (Optional)  
**Max Use:** 5  
**Purpose:** A segment to specify dimensions applicable to the container, such as: - external equipment dimensions

**Dependency Notes:****Semantic Notes:****Comments:**

**Notes:** Example: Transport equipment has off-standard height by additional 23 cm.

DIM+13+CMT:::23'

Example: Transport equipment has extra 40 cm in length, 8 cm in width, and 9 cm in height.

DIM+9+CMT:40:8:9'

**Data Element Summary**

| <u>Data Element</u> | <u>Component Element</u> | <u>Name</u>   | <u>Base Attributes</u> |                | <u>User Attributes</u> |
|---------------------|--------------------------|---|------------------------|----------------|------------------------|
| 6145                |                          | <b>DIMENSION TYPE CODE QUALIFIER</b>                          | <b>M</b>               | <b>1 an..3</b> | <b>M</b>               |
|                     |                          | Code qualifying the type of the dimension.                    |                        |                |                        |
|                     |                          | 1 Gross dimensions  |                        |                |                        |
|                     |                          | To be used for general cargo shipment only (EQD:8053 = 'BB'). |                        |                |                        |
|                     |                          | 5 Off-standard dimension front                                |                        |                |                        |
|                     |                          | 6 Off-standard dimension back                                 |                        |                |                        |
|                     |                          | 7 Off-standard dimension right                                |                        |                |                        |
|                     |                          | 8 Off-standard dimension left                                 |                        |                |                        |
|                     |                          | 9 Off-standard dimension general                              |                        |                |                        |
|                     |                          | 10 External equipment dimension                               |                        |                |                        |
|                     |                          | To be used for non-ISO equipment only.                        |                        |                |                        |
|                     |                          | 13 Off-standard dimensions height                             |                        |                |                        |
| C211                |                          | <b>DIMENSIONS</b>   | <b>M</b>               | <b>1</b>       | <b>M</b>               |
|                     |                          | Specification of the dimensions of a transportable unit.      |                        |                |                        |
|                     | 6411                     | <b>Measurement unit code</b>                                  | <b>M</b>               | <b>an..8</b>   | <b>M</b>               |
|                     |                          | Code specifying the unit of measurement.                      |                        |                |                        |
|                     |                          | CMT Centimetres   |                        |                |                        |
|                     |                          | INH Inches  |                        |                |                        |
|                     | 6168                     | <b>Length measure</b>   | <b>C</b>               | <b>n..15</b>   | <b>O</b>               |
|                     |                          | To specify the value of a length dimension.                   |                        |                |                        |

|             |   |          |              |          |
|-------------|---|----------|--------------|----------|
|             | Overall length if DE:6145 in {'1', '10'}.   |          |              |          |
|             | Overlength if DE:6145 in {'5', '6'}.        |          |              |          |
| <b>6140</b> | <b>Width measure</b>                        | <b>C</b> | <b>n..15</b> | <b>O</b> |
|             | To specify the value of a width dimension.  |          |              |          |
|             | Overall width if DE:6145 in {'1', '10'}.    |          |              |          |
|             | Overwidth if DE:6145 in {'7', '8'}.         |          |              |          |
| <b>6008</b> | <b>Height measure</b>                       | <b>C</b> | <b>n..15</b> | <b>O</b> |
|             | To specify the value of a height dimension. |          |              |          |
|             | Overall height if DE:6145 in {'1', '10'}.   |          |              |          |
|             | Overheight if DE:6145 = '13'.               |          |              |          |
| <b>6182</b> | <b>Diameter measure</b>                     | <b>C</b> | <b>n..15</b> | <b>X</b> |

**Segment:** **FTX** Free Text  
**Position:** 00440  
**Group:** Segment Group 11 (Equipment Details) Mandatory  
**Level:** 2  
**Usage:** Conditional (Dependent)  
**Max Use:** 9  
**Purpose:** A segment to provide processable supplementary information associated with the equipment such as controlled atmosphere particulars.

**Dependency Notes:****Semantic Notes:****Comments:**

**Notes:** Usage complemented in local document if mentioned in that document.

This segment is required in case of general cargo shipment (EQD:8053 = 'BB') to inform the number and type of volumes, according to UN/ECE Recommendation 21 - Codes for Types of Cargo, Packages and Packaging Materials according to Annex V and Annex VI (Doc. Ref. TRADE/CEFACT/2002/), being moved. If it is a bulk cargo (solid or liquid) then the number of volumes is 1 (one). Additionally, it is also used to report the nature of cargo according to Annex II - Eurostat Maritime Transport Directive.

Otherwise this segment is to report complementary information, compulsory or not.

Example: The goods inside the equipment of transport are non-EU, associated with Customs Dispatch document 12PT00067000000000.

FTX+CUS+++NC:12PT00067000000000'

Example: The general cargo shipment is made of 8 barrels.

FTX+PAC+++8:BA'

Example: Solid bulk, agricultural products

FTX+ACB+++23'

Example: 7th wagon of the train counting from the front.

FTX+ACF+++7'

**Data Element Summary**

| <b>Data</b>    | <b>Component</b> |  | <b>Base</b>       | <b>User</b>       |
|----------------|------------------|--|-------------------|-------------------|
| <b>Element</b> | <b>Element</b>   | <b>Name</b>                              | <b>Attributes</b> | <b>Attributes</b> |
| 4451           |                  | TEXT SUBJECT CODE QUALIFIER              | M 1 an..3         | M                 |
|                |                  | Code qualifying the subject of the text. |                   |                   |
|                |                  | AAA Goods item description               |                   |                   |
|                |                  | AAI General information                  |                   |                   |

|             |   |
|-------------|---|
| ABS         | Additional conditions<br>To be used for VGM related information.  |
| ACB         | Additional information<br>Required if EQD:8053 = 'BB'. Not needed otherwise.  |
| ACF         | Additional attribute information<br>In case the cargo is being moved by rail, an occurrence of this segment with this qualifier is needed to inform the position of the wagon in the whole train. |
| ADZ         | CSC (Container Safety Convention) plate information<br>Only for compatibility with SMDG proposal. It will not be processed by JUL system.   |
| CUS         | Customs declaration information<br>Goods customs status.  |
| DAR         | Damage remarks  |
| INV         | Invoice instruction<br>Only for compatibility with SMDG proposal. It will not be processed by JUL system.   |
| LOI         | Loading instruction<br>Only for compatibility with SMDG proposal. It will not be processed by JUL system.   |
| OSI         | Other service information<br>Only for compatibility with SMDG proposal. It will not be processed by JUL system.   |
| PAC         | Packing/marketing information<br>In case of general cargo shipment (EQD:8053 = 'BB') the occurrence of the segment with this qualifier is to provide information on the number of volumes.        |
| SIN         | Special instructions<br>Only for compatibility with SMDG proposal. It will not be processed by JUL system.  |
| <b>4453</b> | <b>FREE TEXT FUNCTION CODE</b> <b>C 1 an..3 X</b>   |
| <b>C107</b> | <b>TEXT REFERENCE</b> <b>C 1 O</b><br>Coded reference to a standard text and its source.<br>Not used if DE:4451 = 'CUS'.  |
| <b>4441</b> | <b>Free text description code</b> <b>M an..17 M</b><br>Code specifying free form text.  |
| 10          | Container in bad condition  |
| DRF         | Reference to weighting equipment certificate (SM1) or method certification (SM2)  |
| NO          | Damaged<br>To be used id DE:4451 = 'DAR'.   |
| OK          | No damage<br>To be used id DE:4451 = 'DAR'.   |
| SM1         | SOLAS Method 1  |

|             | SM2   | SOLAS Method 2 |                |          |  |
|-------------|---|----------------|----------------|----------|--|
| <b>1131</b> | <b>Code list identification code</b>  | <b>C</b>       | <b>an..17</b>  | <b>O</b> |  |
|             | Code identifying a user or association maintained code list.<br>Only for compatibility with SMDG proposal. It will not be processed by JUL system.  |                |                |          |  |
| <b>3055</b> | <b>Code list responsible agency code</b>  | <b>C</b>       | <b>an..3</b>   | <b>O</b> |  |
|             | Code specifying the agency responsible for a code list.<br>Only for compatibility with SMDG proposal. It will not be processed by JUL system.<br>Refer to D.16A Data Element Dictionary for acceptable code values.   |                |                |          |  |
| <b>C108</b> | <b>TEXT LITERAL</b>   | <b>C</b>       | <b>1</b>       | <b>R</b> |  |
|             | Free text; one to five lines.   |                |                |          |  |
| <b>4440</b> | <b>Free text</b>  | <b>M</b>       | <b>an..512</b> | <b>M</b> |  |
|             | Free form text.<br>Usage complemented in local document if mentioned in that document.<br>If DE:4451 = 'CUS' this element should have 'C' for EU goods, or 'NC' for non-EU goods.<br>If DE:4441 in {'SM1', 'SM2'} this element should contain the reference of the certificate for ascertainment of VGM according to method 1 or 2.<br>If DE:4441 = 'DRF' this element should contain the reference to weighting equipment certificate (SM1) or method certification (SM2).<br>If DE:4451 = 'PAC' this element should contain the number of volumes of a general cargo shipment.<br>If DE:4451 = 'ACB' this element contains the nature of cargo according to Annex II - Eurostat Maritime Transport Directive.<br>If DE:4451 = 'ACF' this element contains the position of the wagon in the train. |                |                |          |  |
| <b>4440</b> | <b>Free text</b>  | <b>C</b>       | <b>an..512</b> | <b>O</b> |  |
|             | Free form text.<br>If DE:4451 = 'PAC' this element will contain the type of volumes according to UN/ECE Recommendation 21 - Code for Types of Cargo, Packages and Packing Materials, Annex V and Annex VI.  |                |                |          |  |
| <b>4440</b> | <b>Free text</b>  | <b>C</b>       | <b>an..512</b> | <b>O</b> |  |
|             | Free form text.   |                |                |          |  |
| <b>4440</b> | <b>Free text</b>  | <b>C</b>       | <b>an..512</b> | <b>O</b> |  |
|             | Free form text.   |                |                |          |  |
| <b>4440</b> | <b>Free text</b>  | <b>C</b>       | <b>an..512</b> | <b>O</b> |  |
|             | Free form text.   |                |                |          |  |
| <b>3453</b> | <b>LANGUAGE NAME CODE</b>   | <b>C</b>       | <b>1 an..3</b> | <b>X</b> |  |
| <b>4447</b> | <b>FREE TEXT FORMAT CODE</b>  | <b>C</b>       | <b>1 an..3</b> | <b>X</b> |  |

**Segment:** **SEL** Seal Number  
**Position:** 00460  
**Group:** Segment Group 11 (Equipment Details) Mandatory  
**Level:** 2  
**Usage:** Conditional (Dependent)  
**Max Use:** 7  
**Purpose:** A segment to identify seal and seal issuer associated with the container, such as shipper, consolidator, carrier (sea) and Customs.

**Dependency Notes:****Semantic Notes:****Comments:**

**Notes:** Usage complemented in local document if mentioned in that document.

Segment must be used when the transport equipment is full (EQD:8169 = '5').

Not applicable to general cargo shipment (EQD:8053 = 'BB').

Example: Carrier seal 6629290  
 SEL+6629290+CA'

Example: Mechanical seal 591753 in right condition  
 SEL+591753++1++1'

Example: Illegible seal from unknown origin  
 SEL+ILLEGIBLE+AB'

**Data Element Summary**

| <u>Data Element</u> | <u>Component Element</u> | <u>Name</u>  | <u>Base Attributes</u> | <u>User Attributes</u> |
|---------------------|--------------------------|--|------------------------|------------------------|
| 9308                |                          | <b>TRANSPORT UNIT SEAL IDENTIFIER</b><br>The identification number of a seal affixed to a transport unit.  | C 1 an..35             | R                      |
| C215                |                          | <b>SEAL ISSUER</b><br>Identification of the issuer of a seal on equipment either by code or by name.   | C 1                    | O                      |
|                     | 9303                     | <b>Sealing party name code</b><br>Code specifying the name of the sealing party.<br>Refer to D.16A Data Element Dictionary for acceptable code values. | C an..3                | O                      |
|                     | 1131                     | <b>Code list identification code</b>   | C an..17               | X                      |
|                     | 3055                     | <b>Code list responsible agency code</b>   | C an..3                | X                      |
|                     | 9302                     | <b>Sealing party name</b><br>Name of the sealing party.<br>Only for compatibility with SMDG proposal. It will not be processed by JUL system.          | C an..35               | O                      |
| 4517                |                          | <b>SEAL CONDITION CODE</b>   | C 1 an..3              | O                      |

|             |                              |   |          |                |          |
|-------------|------------------------------|---|----------|----------------|----------|
|             |                              | Code specifying the condition of a seal.  |          |                |          |
|             |                              | Refer to D.16A Data Element Dictionary for acceptable code values.                |          |                |          |
| <b>C208</b> | <b>IDENTITY NUMBER RANGE</b> |   | <b>C</b> | <b>1</b>       | <b>X</b> |
|             |                              | Goods item identification numbers, start and end of consecutively numbered range. |          |                |          |
|             | <b>7402</b>                  | <b>Object identifier</b>  | <b>M</b> | <b>an..35</b>  | <b>X</b> |
|             |                              | Code specifying the unique identity of an object.                                 |          |                |          |
|             | <b>7402</b>                  | <b>Object identifier</b>  | <b>C</b> | <b>an..35</b>  | <b>X</b> |
|             |                              | Code specifying the unique identity of an object.                                 |          |                |          |
| <b>4525</b> | <b>SEAL TYPE CODE</b>        |   | <b>C</b> | <b>1 an..3</b> | <b>O</b> |
|             |                              | To specify a type of seal.  |          |                |          |
|             |                              | Refer to D.16A Data Element Dictionary for acceptable code values.                |          |                |          |



**Segment:** **EQA** Attached Equipment  
**Position:** 00470  
**Group:** Segment Group 11 (Equipment Details) Mandatory  
**Level:** 2  
**Usage:** Conditional (Dependent)  
**Max Use:** 1  
**Purpose:** A segment to identify related container and means of transport details (rail), such as:  
- rail car (to relate to the 'rail car'-qualified EQD-group)

**Dependency Notes:****Semantic Notes:****Comments:**

**Notes:** Complementary to the segment purpose, it also can be used to identify a trailer, a wagon or a barge on which the transport equipment or the general cargo shipment is going to be in when deliver on location.

However this is different from the information in SG12 (TDT).

Needed when the mode of transport is rail.

Example: The equipment of transport is arrived the port by rail, on railcar SP 516 167.

EQA+RR+SP516167'

**Data Element Summary**

| <u>Data Element</u> | <u>Component Element</u> | <u>Name</u>  | <u>Base Attributes</u> | <u>User Attributes</u> |
|---------------------|--------------------------|--|------------------------|------------------------|
| 8053                |                          | EQUIPMENT TYPE CODE QUALIFIER  | M 1 an..3              | M                      |
|                     |                          | Code qualifying a type of equipment.   |                        |                        |
|                     | AB                       | Chain<br>Only for compatibility with SMDG proposal. It will not be processed by JUL system.                |                        |                        |
|                     | AD                       | Temperature recorder<br>Only for compatibility with SMDG proposal. It will not be processed by JUL system. |                        |                        |
|                     | BL                       | Blocks<br>Only for compatibility with SMDG proposal. It will not be processed by JUL system.               |                        |                        |
|                     | BR                       | Barge  |                        |                        |
|                     | CH                       | Chassis<br>Only for compatibility with SMDG proposal. It will not be processed by JUL system.              |                        |                        |
|                     | CN                       | Container<br>Only for compatibility with SMDG proposal. It will not be processed by JUL system.            |                        |                        |
|                     | LAR                      | Lashing rope<br>Only for compatibility with SMDG proposal. It will   |                        |                        |

not be processed by JUL system.

RG Reefer generator  
Only for compatibility with SMDG proposal. It will not be processed by JUL system.

RR Rail car

STR Strap  
Only for compatibility with SMDG proposal. It will not be processed by JUL system.

TE Trailer

TP Tarpaulin  
Only for compatibility with SMDG proposal. It will not be processed by JUL system.

|             |  |          |               |          |
|-------------|--|----------|---------------|----------|
| <b>C237</b> | <b>EQUIPMENT IDENTIFICATION</b>                | <b>C</b> | <b>1</b>      | <b>R</b> |
|             | Marks (letters/numbers) identifying equipment. |          |               |          |
| <b>8260</b> | <b>Equipment identifier</b>                    | <b>C</b> | <b>an..17</b> | <b>R</b> |
|             | To identify equipment.                         |          |               |          |
| <b>1131</b> | <b>Code list identification code</b>           | <b>C</b> | <b>an..17</b> | <b>X</b> |
| <b>3055</b> | <b>Code list responsible agency code</b>       | <b>C</b> | <b>an..3</b>  | <b>X</b> |
| <b>3207</b> | <b>Country identifier</b>                      | <b>C</b> | <b>an..3</b>  | <b>X</b> |

**Segment:** **HAN** Handling Instructions  
**Position:** 00480  
**Group:** Segment Group 11 (Equipment Details) Mandatory  
**Level:** 2  
**Usage:** Conditional (Optional)  
**Max Use:** 9  
**Purpose:** A segment to specify handling instructions related to the container equipment.

**Dependency Notes:****Semantic Notes:****Comments:**

**Notes:** Only for compatibility with SMDG proposal. It will not be processed by JUL system.

**Data Element Summary**

| <u>Data Element</u> | <u>Component Element</u> | <u>Name</u>   | <u>Base Attributes</u> |         | <u>User Attributes</u> |
|---------------------|--------------------------|---|------------------------|---------|------------------------|
| C524                |                          | <b>HANDLING INSTRUCTIONS</b>  | C                      | 1       | O                      |
|                     |                          | Instruction for the handling of goods, products or articles in shipment, storage etc.   |                        |         |                        |
|                     | 4079                     | <b>Handling instruction description code</b>  | C                      | an..3   | O                      |
|                     |                          | Code specifying a handling instruction.<br>Refer to D.16A Data Element Dictionary for acceptable code values.                 |                        |         |                        |
|                     | 1131                     | <b>Code list identification code</b>  | C                      | an..17  | O                      |
|                     |                          | Code identifying a user or association maintained code list.  |                        |         |                        |
|                     | 3055                     | <b>Code list responsible agency code</b>  | C                      | an..3   | O                      |
|                     |                          | Code specifying the agency responsible for a code list.<br>Refer to D.16A Data Element Dictionary for acceptable code values. |                        |         |                        |
|                     | 4078                     | <b>Handling instruction description</b>   | C                      | an..512 | O                      |
|                     |                          | Free form description of a handling instruction.  |                        |         |                        |
| C218                |                          | <b>HAZARDOUS MATERIAL</b>   | C                      | 1       | O                      |
|                     |                          | To specify a hazardous material.  |                        |         |                        |
|                     | 7419                     | <b>Hazardous material category name code</b>  | C                      | an..7   | O                      |
|                     |                          | Code specifying a kind of hazard for a material.  |                        |         |                        |
|                     | 1131                     | <b>Code list identification code</b>  | C                      | an..17  | O                      |
|                     |                          | Code identifying a user or association maintained code list.  |                        |         |                        |
|                     | 3055                     | <b>Code list responsible agency code</b>  | C                      | an..3   | O                      |
|                     |                          | Code specifying the agency responsible for a code list.<br>Refer to D.16A Data Element Dictionary for acceptable code values. |                        |         |                        |
|                     | 7418                     | <b>Hazardous material category name</b>   | C                      | an..35  | O                      |
|                     |                          | Name of a kind of hazard for a material.  |                        |         |                        |

|                  |  |
|------------------|--|
| <b>Group:</b>    | <b>TDT</b> Segment Group 12: Transport Information   |
| <b>Position:</b> | 00490  |
| <b>Group:</b>    | Segment Group 11 (Equipment Details) Mandatory   |
| <b>Level:</b>    | 2  |
| <b>Usage:</b>    | Conditional (Optional)   |
| <b>Max Use:</b>  | 2  |
| <b>Purpose:</b>  | A group of segments to indicate details of the movement of containers by sea, such as mode and means of transport, arrival date and time.  |
| <b>Notes:</b>    | Usage complemented in local document if mentioned in that document.  |
|                  | Additionally to the definition, this group has two purposes.   |
|                  | One is to allow the usage of SG13 (LOC) to inform the location of delivery or receipt of a transport equipment or a general cargo shipment.  |
|                  | The other is to provide information about the pre/on-carriage.   |
|                  | If BGM:1001 = '104', the group is used to indicate on-carriage information.  |
|                  | If BGM:1001 = '171', the group is used to indicate pre-carriage information.   |
|                  | In some situations, for purpose planning it is useful to make a reference to a future voyage or call of a means of transport. This group fills this requirement allowing the reference to one or two ahead voyages or calls in relation to the call identified in SG2. |

#### Segment Summary

|   | <b>Pos.</b>       | <b>Seg.</b>      |   | <b>Req.</b>        | <b>Max.</b>       | <b>Group:</b>        |
|---|-------------------|------------------|---|--------------------|-------------------|----------------------|
|   | <b><u>No.</u></b> | <b><u>ID</u></b> | <b><u>Name</u></b>                              | <b><u>Des.</u></b> | <b><u>Use</u></b> | <b><u>Repeat</u></b> |
| M | 00500             | TDT              | Transport Information                           | M                  | 1                 |                      |
| O | 00510             | DTM              | Date/Time/Period                                | C                  | 1                 |                      |
| O | 00520             | RFF              | Reference                                       | C                  | 1                 |                      |
|   | 00530             |                  | Segment Group 13: Place/Location Identification | C                  |                   | 9                    |

**Segment:** **TDT** **Transport Information**  
**Position:** 00500 (Trigger Segment)  
**Group:** Segment Group 12 (Transport Information) Conditional (Optional)  
**Level:** 2  
**Usage:** Mandatory  
**Max Use:** 1  
**Purpose:** A segment to indicate information related to the main carriage stage of the transport (sea), such as carrier or liner service: - main carriage (sea)

**Dependency Notes:****Semantic Notes:****Comments:**

**Notes:** Usage complemented in local document if mentioned in that document.

Example: On-carriage transport, maritime, voyage number NB528, vessel name Portlink Caravel.

TDT+30+NB528+1+++++:::PORTLINK CARAVEL'

Example: Pre-carriage transport, maritime, voyage number 0220, shipping company is Maersk, vessel SL PRIDE with IMO 8212661.

TDT+10+0220+1+++MAE:172:20:MAERSK+++8212661:146:11:SL PRIDE'

Example: Used just to inform of a location.

TDT+1'

**Data Element Summary**

| <b>Data Element</b> | <b>Component Element Name</b>   | <b>Base Attributes</b> | <b>User Attributes</b> |
|---------------------|---|------------------------|------------------------|
| <b>8051</b>         | <b>TRANSPORT STAGE CODE QUALIFIER</b><br>Code qualifying a specific stage of transport.<br>1 Inland transport<br>10 Pre-carriage transport<br>28 Second on-carriage transport<br>30 On-carriage transport   | <b>M 1 an..3</b>       | <b>M</b>               |
| <b>8028</b>         | <b>MEANS OF TRANSPORT JOURNEY IDENTIFIER</b><br>To identify a journey of a means of transport.<br>Usage complemented in local document if mentioned in that document.<br>Vessel operator's voyage number.<br>Either this element or SG2:RFF must be used to specify a voyage number, or none of them are needed in case there is an occurrence of SG2:RFF referring the visit id. | <b>C 1 an..17</b>      | <b>O</b>               |
| <b>C220</b>         | <b>MODE OF TRANSPORT</b>  | <b>C 1</b>             | <b>O</b>               |

|             |             |   |          |                |          |
|-------------|-------------|---|----------|----------------|----------|
|             |             | Method of transport code or name. Code preferred.                                     |          |                |          |
|             | <b>8067</b> | <b>Transport mode name code</b>   | <b>C</b> | <b>an..3</b>   | <b>O</b> |
|             |             | Code specifying the name of a mode of transport.                                      |          |                |          |
|             |             | UN Recommendation 19 - Code for Modes of Transport.                                   |          |                |          |
|             |             | 1 Maritime  |          |                |          |
|             |             | 2 Rail  |          |                |          |
|             |             | 3 Road  |          |                |          |
|             |             | 4 Air   |          |                |          |
|             |             | Only for compatibility with SMDG proposal. It will not be processed by JUL system.    |          |                |          |
|             |             | 8 Inland water  |          |                |          |
|             | <b>8066</b> | <b>Transport mode name</b>  | <b>C</b> | <b>an..17</b>  | <b>X</b> |
| <b>C001</b> |             | <b>TRANSPORT MEANS</b>  | <b>C</b> | <b>1</b>       | <b>O</b> |
|             |             | Code and/or name identifying the type of means of transport.                          |          |                |          |
|             |             | Only for compatibility with SMDG proposal. It will not be processed by JUL system.    |          |                |          |
|             | <b>8179</b> | <b>Transport means description code</b>   | <b>C</b> | <b>an..8</b>   | <b>O</b> |
|             |             | Code specifying the means of transport.   |          |                |          |
|             |             | Refer to D.16A Data Element Dictionary for acceptable code values.                    |          |                |          |
|             | <b>1131</b> | <b>Code list identification code</b>  | <b>C</b> | <b>an..17</b>  | <b>O</b> |
|             |             | Code identifying a user or association maintained code list.                          |          |                |          |
|             | <b>3055</b> | <b>Code list responsible agency code</b>  | <b>C</b> | <b>an..3</b>   | <b>O</b> |
|             |             | Code specifying the agency responsible for a code list.                               |          |                |          |
|             |             | Refer to D.16A Data Element Dictionary for acceptable code values.                    |          |                |          |
|             | <b>8178</b> | <b>Transport means description</b>  | <b>C</b> | <b>an..17</b>  | <b>O</b> |
|             |             | Free form description of the means of transport.                                      |          |                |          |
| <b>C040</b> |             | <b>CARRIER</b>  | <b>C</b> | <b>1</b>       | <b>O</b> |
|             |             | Identification of a carrier by code and/or by name. Code preferred.                   |          |                |          |
|             |             | Only for compatibility with SMDG proposal. It will not be processed by JUL system.    |          |                |          |
|             | <b>3127</b> | <b>Carrier identifier</b>   | <b>C</b> | <b>an..17</b>  | <b>O</b> |
|             |             | To identify a carrier.  |          |                |          |
|             | <b>1131</b> | <b>Code list identification code</b>  | <b>C</b> | <b>an..17</b>  | <b>O</b> |
|             |             | Code identifying a user or association maintained code list.                          |          |                |          |
|             | <b>3055</b> | <b>Code list responsible agency code</b>  | <b>C</b> | <b>an..3</b>   | <b>O</b> |
|             |             | Code specifying the agency responsible for a code list.                               |          |                |          |
|             |             | Refer to D.16A Data Element Dictionary for acceptable code values.                    |          |                |          |
|             | <b>3126</b> | <b>Carrier name</b>   | <b>C</b> | <b>an..35</b>  | <b>O</b> |
|             |             | Name of a carrier.  |          |                |          |
| <b>8101</b> |             | <b>TRANSIT DIRECTION INDICATOR CODE</b>   | <b>C</b> | <b>1 an..3</b> | <b>X</b> |
| <b>C401</b> |             | <b>EXCESS TRANSPORTATION INFORMATION</b>  | <b>C</b> | <b>1</b>       | <b>X</b> |
|             |             | To provide details of reason for, and responsibility for, use of transportation other |          |                |          |

|             |             |   |          |                |          |
|-------------|-------------|---|----------|----------------|----------|
|             |             | than normally utilized.   |          |                |          |
|             | <b>8457</b> | <b>Excess transportation reason code</b>  | <b>M</b> | <b>an..3</b>   | <b>X</b> |
|             |             | Code specifying the reason for excess transportation.   |          |                |          |
|             | <b>8459</b> | <b>Excess transportation responsibility code</b>  | <b>M</b> | <b>an..3</b>   | <b>X</b> |
|             |             | Code specifying the responsibility for excess transportation.   |          |                |          |
|             | <b>7130</b> | <b>Customer shipment authorisation identifier</b>   | <b>C</b> | <b>an..17</b>  | <b>X</b> |
|             |             | To identify the authorisation to ship issued by the customer.   |          |                |          |
| <b>C222</b> |             | <b>TRANSPORT IDENTIFICATION</b>   | <b>C</b> | <b>1</b>       | <b>O</b> |
|             |             | Code and/or name identifying the means of transport.  |          |                |          |
|             |             | Usage complemented in local document if mentioned in that document.   |          |                |          |
|             | <b>8213</b> | <b>Transport means identification name identifier</b>   | <b>C</b> | <b>an..35</b>  | <b>O</b> |
|             |             | Identifies the name of the transport means.   |          |                |          |
|             |             | Usage complemented in local document if mentioned in that document.   |          |                |          |
|             |             | In case of rail transport (DE:8067 = '2') then this element contains the train number.                              |          |                |          |
|             |             | In case of road transport (DE:8067 = '3') then this element contains the truck/tractor licence plate number.        |          |                |          |
|             |             | In case of maritime ou inland water (DE:8067 in {'1', '8'}), then this element contains the IMO or register number. |          |                |          |
|             | <b>1131</b> | <b>Code list identification code</b>  | <b>C</b> | <b>an..17</b>  | <b>O</b> |
|             |             | Code identifying a user or association maintained code list.  |          |                |          |
|             |             | 103 Call sign directory   |          |                |          |
|             |             | Only for compatibility with SMDG proposal. It will not be processed by JUL system.                                  |          |                |          |
|             |             | 146 Means of transport identification.  |          |                |          |
|             | <b>3055</b> | <b>Code list responsible agency code</b>  | <b>C</b> | <b>an..3</b>   | <b>O</b> |
|             |             | Code specifying the agency responsible for a code list.   |          |                |          |
|             |             | 11 Lloyd's register of shipping   |          |                |          |
|             |             | Only for compatibility with SMDG proposal. It will be processed like '11'.  |          |                |          |
|             |             | 54 IMO (International Maritime Organisation)  |          |                |          |
|             |             | ZZZ Mutually defined  |          |                |          |
|             | <b>8212</b> | <b>Transport means identification name</b>  | <b>C</b> | <b>an..70</b>  | <b>O</b> |
|             |             | Name identifying a means of transport.  |          |                |          |
|             | <b>8453</b> | <b>Transport means nationality code</b>   | <b>C</b> | <b>an..3</b>   | <b>O</b> |
|             |             | Code specifying the nationality of a means of transport.  |          |                |          |
|             |             | Flag of means of transport (ISO 3166 country code, 2-alpha).  |          |                |          |
| <b>8281</b> |             | <b>TRANSPORT MEANS OWNERSHIP INDICATOR CODE</b>   | <b>C</b> | <b>1 an..3</b> | <b>X</b> |
| <b>C003</b> |             | <b>POWER TYPE</b>   | <b>C</b> | <b>1</b>       | <b>X</b> |
|             |             | To specify the type of power.   |          |                |          |

|             |  |          |               |          |
|-------------|--|----------|---------------|----------|
| <b>7041</b> | <b>Power type code</b>                                       | <b>C</b> | <b>an..3</b>  | <b>X</b> |
|             | Code indicating the type of power.                           |          |               |          |
| <b>1131</b> | <b>Code list identification code</b>                         | <b>C</b> | <b>an..17</b> | <b>X</b> |
|             | Code identifying a user or association maintained code list. |          |               |          |
| <b>3055</b> | <b>Code list responsible agency code</b>                     | <b>C</b> | <b>an..3</b>  | <b>X</b> |
|             | Code specifying the agency responsible for a code list.      |          |               |          |
| <b>7040</b> | <b>Power type description</b>                                | <b>C</b> | <b>an..17</b> | <b>X</b> |
|             | Description of the type of power.                            |          |               |          |



**Segment:** **DTM** Date/Time/Period  
**Position:** 00510  
**Group:** Segment Group 12 (Transport Information) Conditional (Optional)  
**Level:** 3  
**Usage:** Conditional (Optional)  
**Max Use:** 1  
**Purpose:** A segment to specify a date and time related to the means of transport (main carriage).

**Dependency Notes:****Semantic Notes:****Comments:**

**Notes:** Only for compatibility with SMDG proposal. It will not be processed by JUL system.

**Data Element Summary**

| <b>Data Element</b> | <b>Component Element</b> | <b>Name</b>   | <b>Base Attributes</b> |               | <b>User Attributes</b> |
|---------------------|--------------------------|---|------------------------|---------------|------------------------|
| <b>C507</b>         |                          | <b>DATE/TIME/PERIOD</b>   | <b>M</b>               | <b>1</b>      | <b>M</b>               |
|                     |                          | Date and/or time, or period relevant to the specified date/time/period type.  |                        |               |                        |
|                     | <b>2005</b>              | <b>Date or time or period function code qualifier</b>   | <b>M</b>               | <b>an..3</b>  | <b>M</b>               |
|                     |                          | Code qualifying the function of a date, time or period.<br>Refer to D.16A Data Element Dictionary for acceptable code values.       |                        |               |                        |
|                     | <b>2380</b>              | <b>Date or time or period text</b>  | <b>C</b>               | <b>an..35</b> | <b>O</b>               |
|                     |                          | The value of a date, a date and time, a time or of a period in a specified representation.  |                        |               |                        |
|                     | <b>2379</b>              | <b>Date or time or period format code</b>   | <b>C</b>               | <b>an..3</b>  | <b>O</b>               |
|                     |                          | Code specifying the representation of a date, time or period.<br>Refer to D.16A Data Element Dictionary for acceptable code values. |                        |               |                        |

**Segment:** **RFF** Reference  
**Position:** 00520  
**Group:** Segment Group 12 (Transport Information) Conditional (Optional)  
**Level:** 3  
**Usage:** Conditional (Optional)  
**Max Use:** 1  
**Purpose:** A segment to provide a reference for the liner service, such as: - conference - marketing organization - syndicate - vessel sharing agreement.

**Dependency Notes:****Semantic Notes:****Comments:**

**Notes:** Usage complemented in local document if mentioned in that document.

Example: train visit id PTSIE218000123

RFF+Z01:PTSIE218000123'

**Data Element Summary**

| <u>Data Element</u> | <u>Component Element</u> | <u>Name</u>                     | <u>Base Attributes</u> |        | <u>User Attributes</u> |
|---------------------|--------------------------|---------------------------------|------------------------|--------|------------------------|
|                     |                          |                                 | M                      | 1      | M                      |
| C506                |                          | <b>REFERENCE</b>                | M                      | 1      | M                      |
|                     |                          | Identification of a reference.  |                        |        |                        |
|                     | 1153                     | <b>Reference code qualifier</b> | M                      | an..3  | M                      |
|                     |                          | Code qualifying a reference.    |                        |        |                        |
|                     |                          | Z01 Means of transport visit id |                        |        |                        |
|                     | 1154                     | <b>Reference identifier</b>     | C                      | an..70 | R                      |
|                     |                          | Identifies a reference.         |                        |        |                        |
|                     | 1156                     | <b>Document line identifier</b> | C                      | an..6  | X                      |
|                     | 1056                     | <b>Version identifier</b>       | C                      | an..9  | X                      |
|                     | 1060                     | <b>Revision identifier</b>      | C                      | an..6  | X                      |

**Group:** **LOC** Segment Group 13: Place/Location Identification  
**Position:** 00530  
**Group:** Segment Group 12 (Transport Information) Conditional (Optional)  
**Level:** 3  
**Usage:** Conditional (Optional)  
**Max Use:** 9  
**Purpose:** A group of segments to indicate details of the main carriage (movement of containers by sea).  
**Notes:** Usage complemented in local document if mentioned in that document.

This group is to identify location of receipt or delivery of a transport equipment or a general cargo shipment.

#### Segment Summary

|   | <b>Pos.</b>       | <b>Seg.</b>      |                               | <b>Req.</b>        | <b>Max.</b>       | <b>Group:</b>        |
|---|-------------------|------------------|-------------------------------|--------------------|-------------------|----------------------|
|   | <b><u>No.</u></b> | <b><u>ID</u></b> | <b><u>Name</u></b>            | <b><u>Des.</u></b> | <b><u>Use</u></b> | <b><u>Repeat</u></b> |
| M | 00540             | LOC              | Place/Location Identification | M                  | 1                 |                      |

**Segment:** **LOC** Place/Location Identification  
**Position:** 00540 (Trigger Segment)  
**Group:** Segment Group 13 (Place/Location Identification) Conditional (Optional)  
**Level:** 3  
**Usage:** Mandatory  
**Max Use:** 1  
**Purpose:** A segment to indicate locations such as (final) discharge ports: - final place or port of discharge

**Dependency Notes:****Semantic Notes:****Comments:**

**Notes:** Usage complemented in local document if mentioned in that document.

In some situations, the code in DE:C517:3225 is not sufficient to identify the location for deliver or reception of goods, due to the lack of detail inherent to the reference code. This is mainly applied when a particular installation may be identified. To mitigate this limitation, two options are considered to provide complementary data. One is by using DE:C519:3223 based on a non-standard list. The other and preferred, is to identify the entity operating the installation in SG11:NAD with the value of SG11:NAD:3035 in {'JB', 'JC'}.

Example: Place of delivery is Bobadela

LOC+7+PTBBL:139:5'

**Data Element Summary**

| <u>Data Element</u> | <u>Component Element</u> | <u>Name</u>  | <u>Base Attributes</u> | <u>User Attributes</u> |
|---------------------|--------------------------|--|------------------------|------------------------|
| 3227                |                          | LOCATION FUNCTION CODE QUALIFIER   | M 1 an..3              | M                      |
|                     |                          | Code identifying the function of a location.                                       |                        |                        |
|                     | 7                        | Place of delivery  |                        |                        |
|                     | 8                        | Place of destination   |                        |                        |
|                     |                          | Only for compatibility with SMDG proposal. It will not be processed by JUL system. |                        |                        |
|                     | 9                        | Place of loading   |                        |                        |
|                     | 11                       | Place of discharge   |                        |                        |
|                     | 13                       | Place of transshipment   |                        |                        |
|                     | 88                       | Place of receipt   |                        |                        |
|                     | 147                      | Transport means stowage location   |                        |                        |
|                     | 170                      | Final port of discharge  |                        |                        |
|                     | 171                      | Place of destination for pre-stacking prior to stowage                             |                        |                        |
|                     |                          | Only for compatibility with SMDG proposal. It will not be processed by JUL system. |                        |                        |
|                     | 175                      | Activity location  |                        |                        |
|                     |                          | Only for compatibility with SMDG proposal. It will not be processed by JUL system. |                        |                        |

|             |  |          |                |          |   |
|-------------|--|----------|----------------|----------|---|
| <b>C517</b> | <b>LOCATION IDENTIFICATION</b>             | <b>C</b> | <b>1</b>       | <b>O</b> | Identification of a location by code or name.   |
| <b>3225</b> | <b>Location identifier</b>                 | <b>C</b> | <b>an..35</b>  | <b>O</b> | To identify a location.<br>Use UN/ECE Recommendation 16 (3rd edition) - UN/LOCODE- Codes for Port and Other Locations (Doc. Ref. ECE/TRADE/227) upgraded to 2003.2 version.<br>If the Locode is unknown, then send ISO Country Code (2-alpha) and send DE:3224. |
| <b>1131</b> | <b>Code list identification code</b>       | <b>C</b> | <b>an..17</b>  | <b>O</b> | Code identifying a user or association maintained code list.<br>139 Port<br>If DE:3227 <> '147'.  |
| <b>3055</b> | <b>Code list responsible agency code</b>   | <b>C</b> | <b>an..3</b>   | <b>O</b> | Code specifying the agency responsible for a code list.<br>5 ISO (International Organization for Standardization)<br>6 UN/ECE (United Nations - Economic Commission for Europe)   |
| <b>3224</b> | <b>Location name</b>                       | <b>C</b> | <b>an..256</b> | <b>O</b> | Name of the location.<br>Only for compatibility with SMDG proposal. It will not be processed by JUL system.   |
| <b>C519</b> | <b>RELATED LOCATION ONE IDENTIFICATION</b> | <b>C</b> | <b>1</b>       | <b>O</b> | Identification the first related location by code or name.<br>Usage complemented in local document if mentioned in that document.   |
| <b>3223</b> | <b>First related location identifier</b>   | <b>C</b> | <b>an..35</b>  | <b>O</b> | To identify a first related location.   |
| <b>1131</b> | <b>Code list identification code</b>       | <b>C</b> | <b>an..17</b>  | <b>O</b> | Code identifying a user or association maintained code list.  |
| <b>3055</b> | <b>Code list responsible agency code</b>   | <b>C</b> | <b>an..3</b>   | <b>O</b> | Code specifying the agency responsible for a code list.<br>Refer to D.16A Data Element Dictionary for acceptable code values.   |
| <b>3222</b> | <b>First related location name</b>         | <b>C</b> | <b>an..70</b>  | <b>O</b> | Name of first related location.<br>Only for compatibility with SMDG proposal. It will not be processed by JUL system.   |
| <b>C553</b> | <b>RELATED LOCATION TWO IDENTIFICATION</b> | <b>C</b> | <b>1</b>       | <b>O</b> | Identification of second related location by code or name.<br>Only for compatibility with SMDG proposal. It will not be processed by JUL system.  |
| <b>3233</b> | <b>Second related location identifier</b>  | <b>C</b> | <b>an..35</b>  | <b>O</b> | To identify a second related location.  |
| <b>1131</b> | <b>Code list identification code</b>       | <b>C</b> | <b>an..17</b>  | <b>O</b> |   |

|             |  |          |                |          |  |
|-------------|--|----------|----------------|----------|--|
|             | Code identifying a user or association maintained code list.       |          |                |          |  |
| <b>3055</b> | <b>Code list responsible agency code</b>                           | <b>C</b> | <b>an..3</b>   | <b>O</b> |  |
|             | Code specifying the agency responsible for a code list.            |          |                |          |  |
|             | Refer to D.16A Data Element Dictionary for acceptable code values. |          |                |          |  |
| <b>3232</b> | <b>Second related location name</b>                                | <b>C</b> | <b>an..70</b>  | <b>O</b> |  |
|             | Name of the second related location.                               |          |                |          |  |
| <b>5479</b> | <b>RELATION CODE</b>   | <b>C</b> | <b>1 an..3</b> | <b>X</b> |  |

**Segment:** **NAD** Name and Address  
**Position:** 00560  
**Group:** Segment Group 11 (Equipment Details) Mandatory  
**Level:** 2  
**Usage:** Conditional (Optional)  
**Max Use:** 9  
**Purpose:** A segment to specify a related address or party, such as: - ordering customer (for container announcement) - agent/representative of the ordering customer (for container announcement) - final place of positioning

**Dependency Notes:****Semantic Notes:****Comments:**

**Notes:** Usage complemented in local document if mentioned in that document.

One usage of this segment is used to specify the Shipping Agent that is responsible for the equipment or general cargo shipment in the call, whenever it is responsible by the vessel call or not. In this case DE:3035 is 'AG'.

Other usage also applies to send the name of the driver that is going to pick-up/delivery the transport equipment or the general cargo shipment.

Other usage is to identify the road (DE:3035 = 'GA') or rail (DE:3035 = 'GT') operator that is carrying the equipment or the shipment.

Example: Equipment responsible agent identified by EORI PT556734947.

NAD+AG+PT556734947:167:155'

Example: Equipment leaving the terminal on a truck driven by Mr. Carlos Manuel.

NAD+DR++CARLOS MANUEL'

**Data Element Summary**

| <u>Data Element</u> | <u>Component Element</u> | <u>Name</u>  | <u>Base Attributes</u> | <u>User Attributes</u> |
|---------------------|--------------------------|--|------------------------|------------------------|
| 3035                |                          | PARTY FUNCTION CODE QUALIFIER  | M 1 an..3              | M                      |
|                     |                          | Code giving specific meaning to a party.   |                        |                        |
|                     | AG                       | Agent  |                        |                        |
|                     |                          | The entity responsible for the transport equipment and the general cargo shipment in the facility. |                        |                        |
|                     | AM                       | Authorized official  |                        |                        |
|                     |                          | Name in capitals of Authorized person signing for verified gross mass (weight) = EDI signature.    |                        |                        |
|                     | CA                       | Carrier  |                        |                        |
|                     |                          | Only for compatibility with SMDG proposal. It will not be processed by JUL system.                 |                        |                        |

|    |  |
|----|--|
| CB | Customs broker<br>Only for compatibility with SMDG proposal. It will not be processed by JUL system.   |
| CF | Container operator/lessee  |
| CG | Carrier's agent<br>Only for compatibility with SMDG proposal. It will not be processed by JUL system.  |
| CN | Consignee<br>Only for compatibility with SMDG proposal. It will not be processed by JUL system.  |
| CZ | Consignor<br>Only for compatibility with SMDG proposal. It will not be processed by JUL system.  |
| DR | Driver   |
| EQ | Empty container responsible party<br>Only for compatibility with SMDG proposal. It will not be processed by JUL system.  |
| EX | Exporter   |
| FP | Freight/charges payer<br>Only for compatibility with SMDG proposal. It will not be processed by JUL system.  |
| GA | Road carrier<br>Shall be provided if SG12:TDT:8067 = '2'.  |
| GT | Rail carrier<br>Shall be provided if SG12:TDT:8067 = '3'.  |
| HR | Shipping line service<br>Only for compatibility with SMDG proposal. It will not be processed by JUL system.  |
| IM | Importer   |
| IO | Insurance company<br>Only for compatibility with SMDG proposal. It will not be processed by JUL system.  |
| JB | Goods collection party<br>Use this qualifier to identify the party responsible for the terminal delivering the goods for carriage at the location identified in SG3:LOC, when SG3:LOC:3227 = '88'.         |
| JC | Party at final place of positioning<br>Use this qualifier to identify the party responsible for terminal receiving the goods from carriage at the location identified in SG3:LOC, when SG3:LOC:3227 = '7'. |
| MF | Manufacturer of goods<br>Only for compatibility with SMDG proposal. It will not be processed by JUL system.  |
| OG | Owner or lessor's surveyor<br>Only for compatibility with SMDG proposal. It will not be processed by JUL system.   |



|             |  |   |          |               |          |
|-------------|--|---|----------|---------------|----------|
|             | OH   | Lessee's surveyor<br>Only for compatibility with SMDG proposal. It will not be processed by JUL system. |          |               |          |
|             | ST   | Ship to<br>Only for compatibility with SMDG proposal. It will not be processed by JUL system.           |          |               |          |
| <b>C082</b> | <b>PARTY IDENTIFICATION DETAILS</b>  |   | <b>C</b> | <b>1</b>      | <b>R</b> |
|             | Identification of a transaction party by code.   |   |          |               |          |
|             | Usage complemented in local document if mentioned in that document.                              |   |          |               |          |
| <b>3039</b> | <b>Party identifier</b>  |   | <b>M</b> | <b>an..35</b> | <b>M</b> |
|             | Code specifying the identity of a party.   |   |          |               |          |
|             | Number corresponding to EORI of the entity, or another code mutually agreed between the parties. |   |          |               |          |
| <b>1131</b> | <b>Code list identification code</b>   |   | <b>C</b> | <b>an..17</b> | <b>O</b> |
|             | Code identifying a user or association maintained code list.                                     |   |          |               |          |
|             | 160  | Party identification  |          |               |          |
|             | 172  | Carrier code  |          |               |          |
| <b>3055</b> | <b>Code list responsible agency code</b>   |   | <b>C</b> | <b>an..3</b>  | <b>O</b> |
|             | Code specifying the agency responsible for a code list.  |   |          |               |          |
|             | Only for compatibility with SMDG proposal. It will not be processed by JUL system.               |   |          |               |          |
|             | Refer to D.16A Data Element Dictionary for acceptable code values.                               |   |          |               |          |
| <b>C058</b> | <b>NAME AND ADDRESS</b>  |   | <b>C</b> | <b>1</b>      | <b>X</b> |
|             | Unstructured name and address: one to five lines.  |   |          |               |          |
| <b>3124</b> | <b>Name and address description</b>  |   | <b>M</b> | <b>an..35</b> | <b>X</b> |
|             | Free form description of a name and address line.  |   |          |               |          |
| <b>3124</b> | <b>Name and address description</b>  |   | <b>C</b> | <b>an..35</b> | <b>X</b> |
|             | Free form description of a name and address line.  |   |          |               |          |
| <b>3124</b> | <b>Name and address description</b>  |   | <b>C</b> | <b>an..35</b> | <b>X</b> |
|             | Free form description of a name and address line.  |   |          |               |          |
| <b>3124</b> | <b>Name and address description</b>  |   | <b>C</b> | <b>an..35</b> | <b>X</b> |
|             | Free form description of a name and address line.  |   |          |               |          |
| <b>3124</b> | <b>Name and address description</b>  |   | <b>C</b> | <b>an..35</b> | <b>X</b> |
|             | Free form description of a name and address line.  |   |          |               |          |
| <b>C080</b> | <b>PARTY NAME</b>  |   | <b>C</b> | <b>1</b>      | <b>X</b> |
|             | Identification of a transaction party by name, one to five lines. Party name may be formatted.   |   |          |               |          |
| <b>3036</b> | <b>Party name</b>  |   | <b>M</b> | <b>an..70</b> | <b>X</b> |
|             | Name of a party.   |   |          |               |          |
| <b>3036</b> | <b>Party name</b>  |   | <b>C</b> | <b>an..70</b> | <b>X</b> |
|             | Name of a party.   |   |          |               |          |
| <b>3036</b> | <b>Party name</b>  |   | <b>C</b> | <b>an..70</b> | <b>X</b> |

|             |             |  |          |                 |          |
|-------------|-------------|--|----------|-----------------|----------|
|             |             | Name of a party.   |          |                 |          |
|             | <b>3036</b> | <b>Party name</b>  | <b>C</b> | <b>an..70</b>   | <b>X</b> |
|             |             | Name of a party.   |          |                 |          |
|             | <b>3036</b> | <b>Party name</b>  | <b>C</b> | <b>an..70</b>   | <b>X</b> |
|             |             | Name of a party.   |          |                 |          |
|             | <b>3045</b> | <b>Party name format code</b>  | <b>C</b> | <b>an..3</b>    | <b>X</b> |
|             |             | Code specifying the representation of a party name.  |          |                 |          |
| <b>C059</b> |             | <b>STREET</b>  | <b>C</b> | <b>1</b>        | <b>X</b> |
|             |             | Street address and/or PO Box number in a structured address: one to four lines.  |          |                 |          |
|             | <b>3042</b> | <b>Street and number or post office box identifier</b>   | <b>M</b> | <b>an..35</b>   | <b>X</b> |
|             |             | To identify a street and number and/or Post Office box number.   |          |                 |          |
|             | <b>3042</b> | <b>Street and number or post office box identifier</b>   | <b>C</b> | <b>an..35</b>   | <b>X</b> |
|             |             | To identify a street and number and/or Post Office box number.   |          |                 |          |
|             | <b>3042</b> | <b>Street and number or post office box identifier</b>   | <b>C</b> | <b>an..35</b>   | <b>X</b> |
|             |             | To identify a street and number and/or Post Office box number.   |          |                 |          |
|             | <b>3042</b> | <b>Street and number or post office box identifier</b>   | <b>C</b> | <b>an..35</b>   | <b>X</b> |
|             |             | To identify a street and number and/or Post Office box number.   |          |                 |          |
| <b>3164</b> |             | <b>CITY NAME</b>   | <b>C</b> | <b>1 an..35</b> | <b>X</b> |
| <b>C819</b> |             | <b>COUNTRY SUBDIVISION DETAILS</b>   | <b>C</b> | <b>1</b>        | <b>X</b> |
|             |             | To specify a country subdivision, such as state, canton, county, prefecture.   |          |                 |          |
|             | <b>3229</b> | <b>Country subdivision identifier</b>  | <b>C</b> | <b>an..9</b>    | <b>X</b> |
|             |             | To identify a country subdivision, such as state, canton, county, prefecture.  |          |                 |          |
|             | <b>1131</b> | <b>Code list identification code</b>   | <b>C</b> | <b>an..17</b>   | <b>X</b> |
|             |             | Code identifying a user or association maintained code list.   |          |                 |          |
|             | <b>3055</b> | <b>Code list responsible agency code</b>   | <b>C</b> | <b>an..3</b>    | <b>X</b> |
|             |             | Code specifying the agency responsible for a code list.  |          |                 |          |
|             | <b>3228</b> | <b>Country subdivision name</b>  | <b>C</b> | <b>an..70</b>   | <b>X</b> |
|             |             | Name of a country subdivision, such as state, canton, county, prefecture.  |          |                 |          |
| <b>3251</b> |             | <b>POSTAL IDENTIFICATION CODE</b>  | <b>C</b> | <b>1 an..17</b> | <b>X</b> |
| <b>3207</b> |             | <b>COUNTRY IDENTIFIER</b>  | <b>C</b> | <b>1 an..3</b>  | <b>O</b> |
|             |             | Identification of the name of the country or other geographical entity as defined in ISO 3166-1 and UN/ECE Recommendation 3. |          |                 |          |
|             |             | ISO 3166 Country Code, 2-Alpha.  |          |                 |          |

**Group:** **DGS** Segment Group 14: Dangerous Goods  
**Position:** 00570  
**Group:** Segment Group 11 (Equipment Details) Mandatory  
**Level:** 2  
**Usage:** Conditional (Optional)  
**Max Use:** 99  
**Purpose:** A group of segments to specify dangerous goods.  
**Notes:** In this version, no detailed information is needed. The group is just used to declare the presence of dangerous goods.  
 However the data provided will be kept.

#### Segment Summary

|   | <b>Pos.</b>       | <b>Seg.</b>      |                                       | <b>Req.</b>        | <b>Max.</b>       | <b>Group:</b>        |
|---|-------------------|------------------|---------------------------------------|--------------------|-------------------|----------------------|
|   | <b><u>No.</u></b> | <b><u>ID</u></b> | <b><u>Name</u></b>                    | <b><u>Des.</u></b> | <b><u>Use</u></b> | <b><u>Repeat</u></b> |
| M | 00580             | DGS              | Dangerous Goods                       | M                  | 1                 |                      |
| O | 00590             | FTX              | Free Text                             | C                  | 1                 |                      |
|   | 00610             |                  | Segment Group 15: Contact Information | C                  |                   | 9                    |

**Segment:** **DGS** Dangerous Goods  
**Position:** 00580 (Trigger Segment)  
**Group:** Segment Group 14 (Dangerous Goods) Conditional (Optional)  
**Level:** 2  
**Usage:** Mandatory  
**Max Use:** 1  
**Purpose:** A segment to indicate the dangerous goods regulations which apply, the class of dangerous goods, additional dangerous goods codes, the United Nations Dangerous Goods (UNDG) number and the shipment flash point.

**Dependency Notes:****Semantic Notes:****Comments:**

**Notes:** Example: Goods with IMDG code 6.1, with UNDG 3253.

DGS+IMD+6.1+3253'

**Data Element Summary**

| <u>Data Element</u> | <u>Component Element</u> | <u>Name</u>   | <u>Base Attributes</u> |   |        | <u>User Attributes</u> |
|---------------------|--------------------------|---|------------------------|---|--------|------------------------|
| 8273                |                          | <b>DANGEROUS GOODS REGULATIONS CODE</b><br>Code specifying a dangerous goods regulation.<br>IMD                    IMO IMDG code  | C                      | 1 | an..3  | O                      |
| C205                |                          | <b>HAZARD CODE</b><br>The identification of the dangerous goods in code.  | C                      | 1 |        | O                      |
|                     | 8351                     | <b>Hazard identification code</b><br>Code identifying a hazard.   | M                      |   | an..7  | M                      |
|                     | 8078                     | <b>Additional hazard classification identifier</b><br>To identify an additional hazard classification.<br><i>Only for compatibility with SMDG proposal. It will not be processed by JUL system.</i>                 | C                      |   | an..7  | O                      |
|                     | 8092                     | <b>Hazard code version identifier</b><br>To identify the version number of a hazard code.<br><i>Only for compatibility with SMDG proposal. It will not be processed by JUL system.</i>                              | C                      |   | an..10 | O                      |
| C234                |                          | <b>UNDG INFORMATION</b><br>Information on dangerous goods, taken from the United Nations Dangerous Goods classification.  | C                      | 1 |        | O                      |
|                     | 7124                     | <b>United Nations Dangerous Goods (UNDG) identifier</b><br>The unique serial number assigned within the United Nations to substances and articles contained in a list of the dangerous goods most commonly carried. | C                      |   | n4     | O                      |
|                     | 7088                     | <b>Dangerous goods flashpoint description</b>   | C                      |   | an..8  | X                      |
| C223                |                          | <b>DANGEROUS GOODS SHIPMENT FLASHPOINT</b>  | C                      | 1 |        | O                      |

|      |  |  |          |   |
|------|--|--|----------|---|
|      |  | Temperature at which a vapor can be ignited as per ISO 1523/73.                    |          |   |
|      |  | Only for compatibility with SMDG proposal. It will not be processed by JUL system. |          |   |
| 7106 | <b>Shipment flashpoint degree</b>  | C  | n3       | O |
|      | To specify the value of the flashpoint of a shipment.  |  |          |   |
| 6411 | <b>Measurement unit code</b>   | C  | an..8    | O |
|      | Code specifying the unit of measurement.   |  |          |   |
| 8339 | <b>PACKAGING DANGER LEVEL CODE</b>   | C  | 1 an..3  | O |
|      | Code specifying the level of danger for which the packaging must cater.  |  |          |   |
|      | Refer to D.16A Data Element Dictionary for acceptable code values.   |  |          |   |
| 8364 | <b>EMERGENCY PROCEDURE FOR SHIPS IDENTIFIER</b>  | C  | 1 an..8  | O |
|      | To identify the emergency procedure number for ships transporting dangerous goods.                                 |  |          |   |
|      | Synonym: EMS Number.   |  |          |   |
|      | Only for compatibility with SMDG proposal. It will not be processed by JUL system.                                 |  |          |   |
| 8410 | <b>HAZARD MEDICAL FIRST AID GUIDE IDENTIFIER</b>   | C  | 1 an..4  | O |
|      | To identify a Medical First Aid Guide (MFAG) for hazardous goods.  |  |          |   |
|      | Only for compatibility with SMDG proposal. It will not be processed by JUL system.                                 |  |          |   |
| 8126 | <b>TRANSPORT EMERGENCY CARD IDENTIFIER</b>   | C  | 1 an..10 | O |
|      | To identify a transport emergency (TREM) card.   |  |          |   |
|      | Only for compatibility with SMDG proposal. It will not be processed by JUL system.                                 |  |          |   |
| C235 | <b>HAZARD IDENTIFICATION PLACARD DETAILS</b>   | C  | 1        | O |
|      | These numbers appear on the hazard identification placard required on the means of transport.                      |  |          |   |
|      | Only for compatibility with SMDG proposal. It will not be processed by JUL system.                                 |  |          |   |
| 8158 | <b>Orange hazard placard upper part identifier</b>   | C  | an..4    | O |
|      | To specify the identity number for the upper part of the orange hazard placard required on the means of transport. |  |          |   |
| 8186 | <b>Orange hazard placard lower part identifier</b>   | C  | an4      | O |
|      | To specify the identity number for the lower part of the orange hazard placard required on the means of transport. |  |          |   |
| C236 | <b>DANGEROUS GOODS LABEL</b>   | C  | 1        | O |
|      | Markings identifying the type of hazardous goods and similar information.  |  |          |   |
|      | Only for compatibility with SMDG proposal. It will not be processed by JUL system.                                 |  |          |   |
| 8246 | <b>Dangerous goods marking identifier</b>  | C  | an..4    | O |
|      | To identify the marking of dangerous goods.  |  |          |   |

|      |  |   |         |   |
|------|--|---|---------|---|
| 8246 | <b>Dangerous goods marking identifier</b><br>To identify the marking of dangerous goods.             | C | an..4   | O |
| 8246 | <b>Dangerous goods marking identifier</b><br>To identify the marking of dangerous goods.             | C | an..4   | O |
| 8246 | <b>Dangerous goods marking identifier</b><br>To identify the marking of dangerous goods.             | C | an..4   | O |
| 8255 | <b>PACKING INSTRUCTION TYPE CODE</b>   | C | 1 an..3 | X |
| 8179 | <b>TRANSPORT MEANS DESCRIPTION CODE</b>  | C | 1 an..8 | X |
| 8211 | <b>HAZARDOUS CARGO TRANSPORT<br/>AUTHORISATION CODE</b>  | C | 1 an..3 | X |
| C289 | <b>TUNNEL RESTRICTION</b><br>To specify a restriction for transport through tunnels.                 | C | 1       | X |
| 8461 | <b>Tunnel Restriction Code</b><br>A code indicating a restriction for transport through tunnels.     | C | an..6   | X |
| 1131 | <b>Code list identification code</b><br>Code identifying a user or association maintained code list. | C | an..17  | X |
| 3055 | <b>Code list responsible agency code</b><br>Code specifying the agency responsible for a code list.  | C | an..3   | X |

**Segment:** **FTX** Free Text  
**Position:** 00590  
**Group:** Segment Group 14 (Dangerous Goods) Conditional (Optional)  
**Level:** 3  
**Usage:** Conditional (Optional)  
**Max Use:** 1  
**Purpose:** A segment to specify supplementary details regarding the dangerous goods such as dangerous goods technical name and dangerous goods additional information.

**Dependency Notes:****Semantic Notes:****Comments:**

**Notes:** Example: Technical name is Butyl Acrylates, Stabilized

FTX+AAD+++BUTYL ACRYLATES, STABILIZED'

**Data Element Summary**

| <u>Data Element</u> | <u>Component Element</u> | <u>Name</u>   | <u>Base Attributes</u> |         | <u>User Attributes</u> |
|---------------------|--------------------------|---|------------------------|---------|------------------------|
| 4451                |                          | <b>TEXT SUBJECT CODE QUALIFIER</b><br>Code qualifying the subject of the text.<br>Refer to D.16A Data Element Dictionary for acceptable code values.                      | M                      | 1 an..3 | M                      |
| 4453                |                          | <b>FREE TEXT FUNCTION CODE</b><br>Code specifying the function of free text.<br>Refer to D.16A Data Element Dictionary for acceptable code values.                        | C                      | 1 an..3 | O                      |
| C107                |                          | <b>TEXT REFERENCE</b><br>Coded reference to a standard text and its source.   | C                      | 1       | O                      |
|                     | 4441                     | <b>Free text description code</b><br>Code specifying free form text.  | M                      | an..17  | M                      |
|                     | 1131                     | <b>Code list identification code</b><br>Code identifying a user or association maintained code list.  | C                      | an..17  | O                      |
|                     | 3055                     | <b>Code list responsible agency code</b><br>Code specifying the agency responsible for a code list.<br>Refer to D.16A Data Element Dictionary for acceptable code values. | C                      | an..3   | O                      |
| C108                |                          | <b>TEXT LITERAL</b><br>Free text; one to five lines.  | C                      | 1       | O                      |
|                     | 4440                     | <b>Free text</b><br>Free form text.   | M                      | an..512 | M                      |
|                     | 4440                     | <b>Free text</b><br>Free form text.   | C                      | an..512 | O                      |
|                     | 4440                     | <b>Free text</b><br>Free form text.   | C                      | an..512 | O                      |
|                     | 4440                     | <b>Free text</b>  | C                      | an..512 | O                      |

|             |  |          |                |          |  |
|-------------|--|----------|----------------|----------|--|
|             | Free form text.  |          |                |          |  |
| <b>4440</b> | <b>Free text</b>   | <b>C</b> | <b>an..512</b> | <b>O</b> |  |
|             | Free form text.  |          |                |          |  |
| <b>3453</b> | <b>LANGUAGE NAME CODE</b>  | <b>C</b> | <b>1 an..3</b> | <b>O</b> |  |
|             | Code specifying the language name.                                 |          |                |          |  |
| <b>4447</b> | <b>FREE TEXT FORMAT CODE</b>                                       | <b>C</b> | <b>1 an..3</b> | <b>O</b> |  |
|             | Code specifying the format of free text.                           |          |                |          |  |
|             | Refer to D.16A Data Element Dictionary for acceptable code values. |          |                |          |  |



**Group:** **CTA** Segment Group 15: Contact Information  
**Position:** 00610  
**Group:** Segment Group 14 (Dangerous Goods) Conditional (Optional)  
**Level:** 3  
**Usage:** Conditional (Optional)  
**Max Use:** 9  
**Purpose:** A group of segments to specify contact information.  
**Notes:** Only for compatibility with SMDG proposal. It will not be processed by JUL system.

#### Segment Summary

|   | <b>Pos.</b>       | <b>Seg.</b>      |                       | <b>Req.</b>        | <b>Max.</b>       | <b>Group:</b>        |
|---|-------------------|------------------|-----------------------|--------------------|-------------------|----------------------|
|   | <b><u>No.</u></b> | <b><u>ID</u></b> | <b><u>Name</u></b>    | <b><u>Des.</u></b> | <b><u>Use</u></b> | <b><u>Repeat</u></b> |
| M | 00620             | CTA              | Contact Information   | M                  | 1                 |                      |
| O | 00630             | COM              | Communication Contact | C                  | 9                 |                      |

**Segment:** **CTA Contact Information**  
**Position:** 00620 (Trigger Segment)  
**Group:** Segment Group 15 (Contact Information) Conditional (Optional)  
**Level:** 3  
**Usage:** Mandatory  
**Max Use:** 1  
**Purpose:** A segment to identify a person or department to be contacted regarding dangerous goods.

**Dependency Notes:****Semantic Notes:****Comments:**

**Notes:** Only for compatibility with SMDG proposal. It will not be processed by JUL system.

**Data Element Summary**

| <b>Data Element</b> | <b>Component Element</b> | <b>Name</b>  | <b>Base Attributes</b> | <b>User Attributes</b> |
|---------------------|--------------------------|--|------------------------|------------------------|
| 3139                |                          | <b>CONTACT FUNCTION CODE</b><br>Code specifying the function of a contact (e.g. department or person).<br>Refer to D.16A Data Element Dictionary for acceptable code values. | C 1 an..3              | O                      |
| C056                |                          | <b>CONTACT DETAILS</b><br>Code and/or name of a contact such as a department or employee. Code preferred.  | C 1                    | O                      |
|                     | 3413                     | <b>Contact identifier</b><br>To identify a contact, such as a department or employee.  | C an..17               | O                      |
|                     | 3412                     | <b>Contact name</b><br>Name of a contact, such as a department or employee.  | C an..256              | O                      |

**Segment:** **COM** **Communication Contact**  
**Position:** 00630  
**Group:** Segment Group 15 (Contact Information)      Conditional (Optional)  
**Level:** 4  
**Usage:** Conditional (Optional)  
**Max Use:** 9  
**Purpose:** A segment to specify communication details of the dangerous goods contact.

**Dependency Notes:****Semantic Notes:****Comments:**

**Notes:** Only for compatibility with SMDG proposal. It will not be processed by JUL system.

**Data Element Summary**

| <b>Data Element</b> | <b>Component Element</b> | <b>Name</b>  | <b>Base Attributes</b> |                | <b>User Attributes</b> |
|---------------------|--------------------------|--|------------------------|----------------|------------------------|
| <b>C076</b>         |                          | <b>COMMUNICATION CONTACT</b>   | <b>M</b>               | <b>3</b>       | <b>M</b>               |
|                     |                          | Communication number of a department or employee in a specified channel. |                        |                |                        |
|                     | <b>3148</b>              | <b>Communication address identifier</b>                                  | <b>M</b>               | <b>an..512</b> | <b>M</b>               |
|                     |                          | To identify a communication address.                                     |                        |                |                        |
|                     | <b>3155</b>              | <b>Communication means type code</b>                                     | <b>M</b>               | <b>an..3</b>   | <b>M</b>               |
|                     |                          | Code specifying the type of communication address.                       |                        |                |                        |
|                     |                          | Refer to D.16A Data Element Dictionary for acceptable code values.       |                        |                |                        |

**Group:** **TMP** Segment Group 16: Temperature  
**Position:** 00640  
**Group:** Segment Group 11 (Equipment Details) Mandatory  
**Level:** 2  
**Usage:** Conditional (Optional)  
**Max Use:** 9  
**Purpose:** A segment group to identify transport related temperature settings.  
**Notes:** Only for compatibility with SMDG proposal. It will not be processed by JUL system.

#### Segment Summary

|   | <b>Pos.</b>       | <b>Seg.</b>      |                    | <b>Req.</b>        | <b>Max.</b>       | <b>Group:</b>        |
|---|-------------------|------------------|--------------------|--------------------|-------------------|----------------------|
|   | <b><u>No.</u></b> | <b><u>ID</u></b> | <b><u>Name</u></b> | <b><u>Des.</u></b> | <b><u>Use</u></b> | <b><u>Repeat</u></b> |
| M | 00650             | TMP              | Temperature        | M                  | 1                 |                      |
| O | 00660             | RNG              | Range Details      | C                  | 1                 |                      |

**Segment:** **TMP** Temperature  
**Position:** 00650 (Trigger Segment)  
**Group:** Segment Group 16 (Temperature) Conditional (Optional)  
**Level:** 2  
**Usage:** Mandatory  
**Max Use:** 1  
**Purpose:** A segment to specify the type of transport related temperature such as storage, transport or operating temperature and also to optionally specify a single value temperature setting.

**Dependency Notes:****Semantic Notes:****Comments:**

**Notes:** Only for compatibility with SMDG proposal. It will not be processed by JUL system.

**Data Element Summary**

| <b>Data Element</b> | <b>Component Element</b> | <b>Name</b>  | <b>Base Attributes</b> |   |       | <b>User Attributes</b> |
|---------------------|--------------------------|--|------------------------|---|-------|------------------------|
| 6245                |                          | <b>TEMPERATURE TYPE CODE QUALIFIER</b>   | M                      | 1 | an..3 | M                      |
|                     |                          | Code qualifying the type of a temperature.<br>Refer to D.16A Data Element Dictionary for acceptable code values. |                        |   |       |                        |
| C239                |                          | <b>TEMPERATURE SETTING</b>   | C                      | 1 |       | O                      |
|                     |                          | The temperature under which the goods are (to be) stored or shipped.   |                        |   |       |                        |
|                     | 6246                     | <b>Temperature degree</b>  | C                      |   | n..15 | O                      |
|                     |                          | To specify the value of a temperature.   |                        |   |       |                        |
|                     | 6411                     | <b>Measurement unit code</b>   | C                      |   | an..8 | O                      |
|                     |                          | Code specifying the unit of measurement.   |                        |   |       |                        |

**Segment:** **RNG** Range Details  
**Position:** 00660  
**Group:** Segment Group 16 (Temperature) Conditional (Optional)  
**Level:** 3  
**Usage:** Conditional (Optional)  
**Max Use:** 1  
**Purpose:** A segment to optionally specify the transport related temperature as a range of values.

**Dependency Notes:****Semantic Notes:****Comments:**

**Notes:** Only for compatibility with SMDG proposal. It will not be processed by JUL system.

**Data Element Summary**

| <b>Data Element</b> | <b>Component Element</b> | <b>Name</b>  | <b>Base Attributes</b> |   |       | <b>User Attributes</b> |
|---------------------|--------------------------|--|------------------------|---|-------|------------------------|
| 6167                |                          | <b>RANGE TYPE CODE QUALIFIER</b><br>Code qualifying a type of range.<br>Refer to D.16A Data Element Dictionary for acceptable code values. | M                      | 1 | an..3 | M                      |
| C280                |                          | <b>RANGE</b><br>Range minimum and maximum limits.  | C                      | 1 |       | O                      |
|                     | 6411                     | <b>Measurement unit code</b><br>Code specifying the unit of measurement.   | M                      |   | an..8 | M                      |
|                     | 6162                     | <b>Range minimum quantity</b><br>To specify the minimum value of a range.  | C                      |   | n..18 | O                      |
|                     | 6152                     | <b>Range maximum quantity</b><br>To specify the maximum value of a range.  | C                      |   | n..18 | O                      |

**Segment:** **CNT** Control Total  
**Position:** 00670  
**Group:**  
**Level:** 0  
**Usage:** Conditional (Optional)  
**Max Use:** 1  
**Purpose:** A segment to specify the number of containers in the message, explicitly given by the sender.

**Dependency Notes:****Semantic Notes:****Comments:**

**Notes:** Usage complemented in local document if mentioned in that document.

This segment provides the total number of equipment reported in this message. In case there are only general cargo shipments mentioned, then send 0 (zero).

Example: The message reports 20 units.

CNT+16:20'

Example: The message reports 3 general cargo shipments.

CNT+16:0'

**Data Element Summary**

| <b>Data Element</b> | <b>Component Element</b> | <b>Name</b>  | <b>Base Attributes</b> |              | <b>User Attributes</b> |
|---------------------|--------------------------|--|------------------------|--------------|------------------------|
| <b>C270</b>         |                          | <b>CONTROL</b>   | <b>M</b>               | <b>1</b>     | <b>M</b>               |
|                     |                          | Control total for checking integrity of a message or part of a message.            |                        |              |                        |
|                     | <b>6069</b>              | <b>Control total type code qualifier</b>   | <b>M</b>               | <b>an..3</b> | <b>M</b>               |
|                     |                          | Code qualifying the type of control of hash total.                                 |                        |              |                        |
|                     |                          | 1 Total of line item quantities  |                        |              |                        |
|                     |                          | Only for compatibility with SMDG proposal. It will not be processed by JUL system. |                        |              |                        |
|                     |                          | 16 Total number of equipment   |                        |              |                        |
|                     | <b>6066</b>              | <b>Control total quantity</b>  | <b>M</b>               | <b>n..18</b> | <b>M</b>               |
|                     |                          | To specify the value of a control quantity.  |                        |              |                        |
|                     | <b>6411</b>              | <b>Measurement unit code</b>   | <b>C</b>               | <b>an..8</b> | <b>X</b>               |

**Segment:** **UNT** Message Trailer  
**Position:** 00680  
**Group:**  
**Level:** 0  
**Usage:** Mandatory  
**Max Use:** 1  
**Purpose:** A service segment ending a message, giving the total number of segments in the message (including the UNH & UNT) and the control reference number of the message.

**Dependency Notes:****Semantic Notes:****Comments:****Notes:** Example: 26 sent segments, message envelope reference "1357924680"

UNT+26+1357924680'

**Data Element Summary**

| <u>Data Element</u> | <u>Component Element</u> | <u>Name</u>                                       | <u>Base Attributes</u> |   |        | <u>User Attributes</u> |
|---------------------|--------------------------|---|------------------------|---|--------|------------------------|
| 0074                |                          | NUMBER OF SEGMENTS IN A MESSAGE                   | M                      | 1 | n..6   | M                      |
|                     |                          | Control count of number of segments in a message. |                        |   |        |                        |
| 0062                |                          | MESSAGE REFERENCE NUMBER                          | M                      | 1 | an..14 | M                      |
|                     |                          | Unique message reference assigned by the sender.  |                        |   |        |                        |