

COPARN Container Announcement Message

Introduction:

The message contains an order to release, to make available, to accept or to call down containers or to announce the impending arrival of containers.

This message is part of a total set of container-related messages. These messages serve to facilitate the intermodal handling of containers by streamlining the information exchange. The business scenario for the container messages is clarified in a separate document, called: 'Guide to the scenario of EDIFACT container messages'.

The order may pertain to cargo related containers (full container load and less than container load), the arrangement of empty containers prior to loading and after stripping, as well as the arrangements for leasing the empty containers (on-hire and off-hire of containers).

Notes:

This Message Implementation Guideline (MIG) has been developed by JUL Project Team, in the context of the JUL Portuguese Project (www.projeto-jul.pt).

In this context, the following items are considered. The document provides the definition of the Cargo Announcement message to be used in electronic data interchange with Port Terminals, cargo operators or their representatives, related with cargo movements in Portuguese ports.

Due to the existence of current implementations of this message in some Portuguese ports, the document signals where backward compatibility is relevant. However, new or updated implementations must follow this MIG and shall ignore these specific exceptions.

Additionally to the UN/EDIFACT definition and scope, this MIG is used also applied to general cargo.

This MIG provides guidance as to the recommended usage of codes, qualifiers, data elements, composites, segments and groups of segments in the D.16A COPARN. The intention is to assist developers to ensure consistent use of the COPARN message throughout the worldwide trade and transport community.

The MIG was elaborated considering the following references:

- UN/EDIFACT D.16A COPARN
- UN/EDIFACT D.16A Data Element Codes
- ISO 6346, 2nd and 3rd editions, and amendments – Freight containers – Coding, identification and marking
- UN/ECE Recommendation 7 – Numerical Representation of Dates, Time, and Periods of Time
- UN/ECE Recommendation 16 (3rd edition) – UN/LOCODE – Codes for Ports and Other Locations
- UN/ECE Recommendation 19 (2nd edition) – Codes for Modes of Transport
- UN/ECE Recommendation 20 – Codes for Units of Measure Used in International Trade
- ITIGG: General Recommendations Version 2.1 March 2001
- SMDG MIG COPARN Version 2.1-3

Being based on SMDG MIG does not mean a full adoption of SMDG proposals. In some situations, groups,

segments, elements or codes are not applicable. In other situations, groups, segments, elements or codes are included but notes are present to inform the purpose of SMDG proposal compability. Notes on this matter will be in font Courier New 8pt Bold.

Usage indicators in this MIG follow ITIGG Recommendation D4/G44.

Status Indicators (“M” and “C”) form part of the UN/EDIFACT standard and indicate a minimum requirement to fulfil the needs of the message structure. They are not adequate for implementation purposes. The Status Indicators are:

Value Description

M Mandatory

The entity marked as such must appear in all messages, and apply to these messages as well as to any associated implementation guidelines (and consequently is also a Usage Indicator).

C Conditional

The entity is used by agreement between trading partners.

Usage Indicators are implementation related indicators that further detail the use of “Conditional” Status Indicators. Usage Indicators are applied at all levels of the guidelines and shown adjacent to data items such as segment groups, segments, composite data elements and simple data elements. They dictate the agreed usage of the data items or entities. The Usage Indicators are:

Value Description

M Mandatory

Indicates the item is mandatory in the UN/EDIFACT message.

R Required

Indicates the item must be transmitted in this implementation.

D Dependent

Indicates that the use of the item is depending on a well-defined condition or set of conditions. These conditions must be clearly specified in the relevant implementation guideline.

O Optional

Indicates that this item is at the need or discretion of both trading partners.

X Not Used

Indicates that this item is not to be used in this implementation.

Where an item within a segment group, segment or composite data element is marked with Usage Indicators “M” or “R”, but the segment group, segment or composite data element has been marked “O” or “D” (or for that matter “X”), the item is only to be transmitted when the segment group, segment or composite of which it is a part, is used.

Examples in the text are just related with the segments where they appear. They are not necessarily related between each other.

*** Special Note On General Cargo

The COPARN message was not designed for the announcement of general cargo. For this reason, this MIG defines a segments' and elements' usage that supports a mechanism to represent general cargo movements. This is described in SG13 (EQD) notes.

*** Special Note On Local Usage

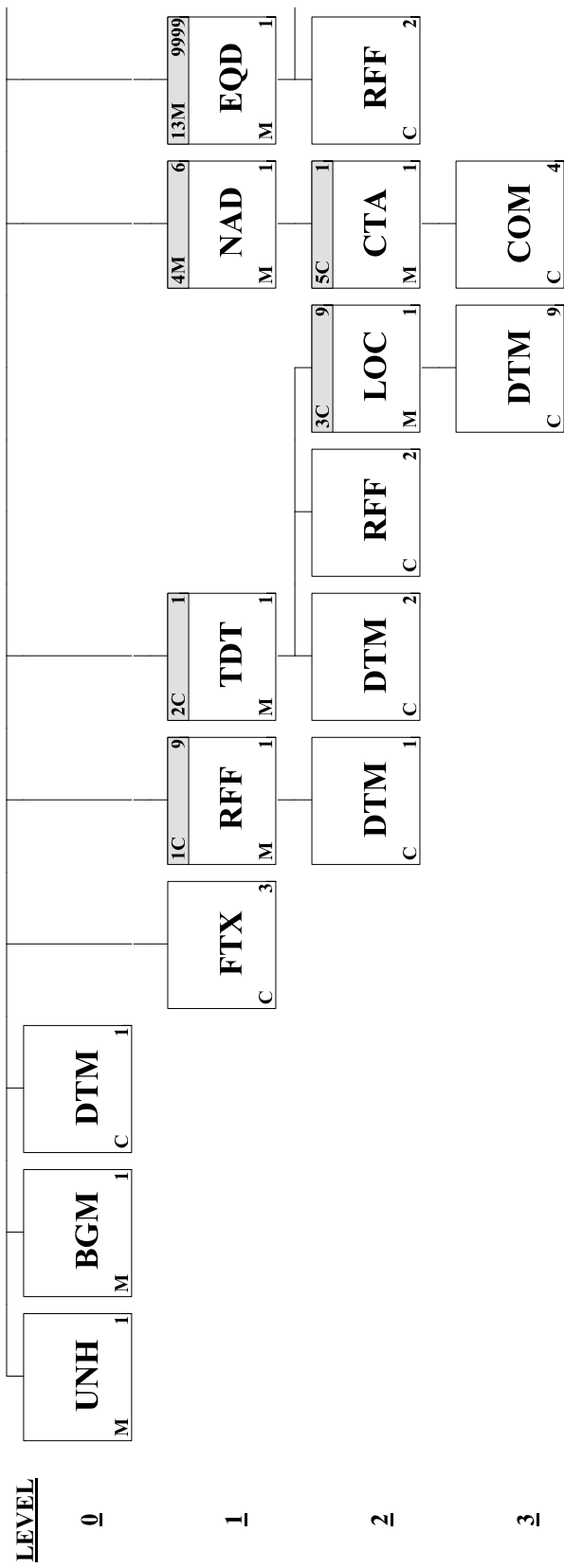
Due to the diverse realities of the Portuguese ports and the stakeholders operating in them, it is necessary to define local rules, codes, etc. But this needs to be done considering the harmonization framework that this document defines.

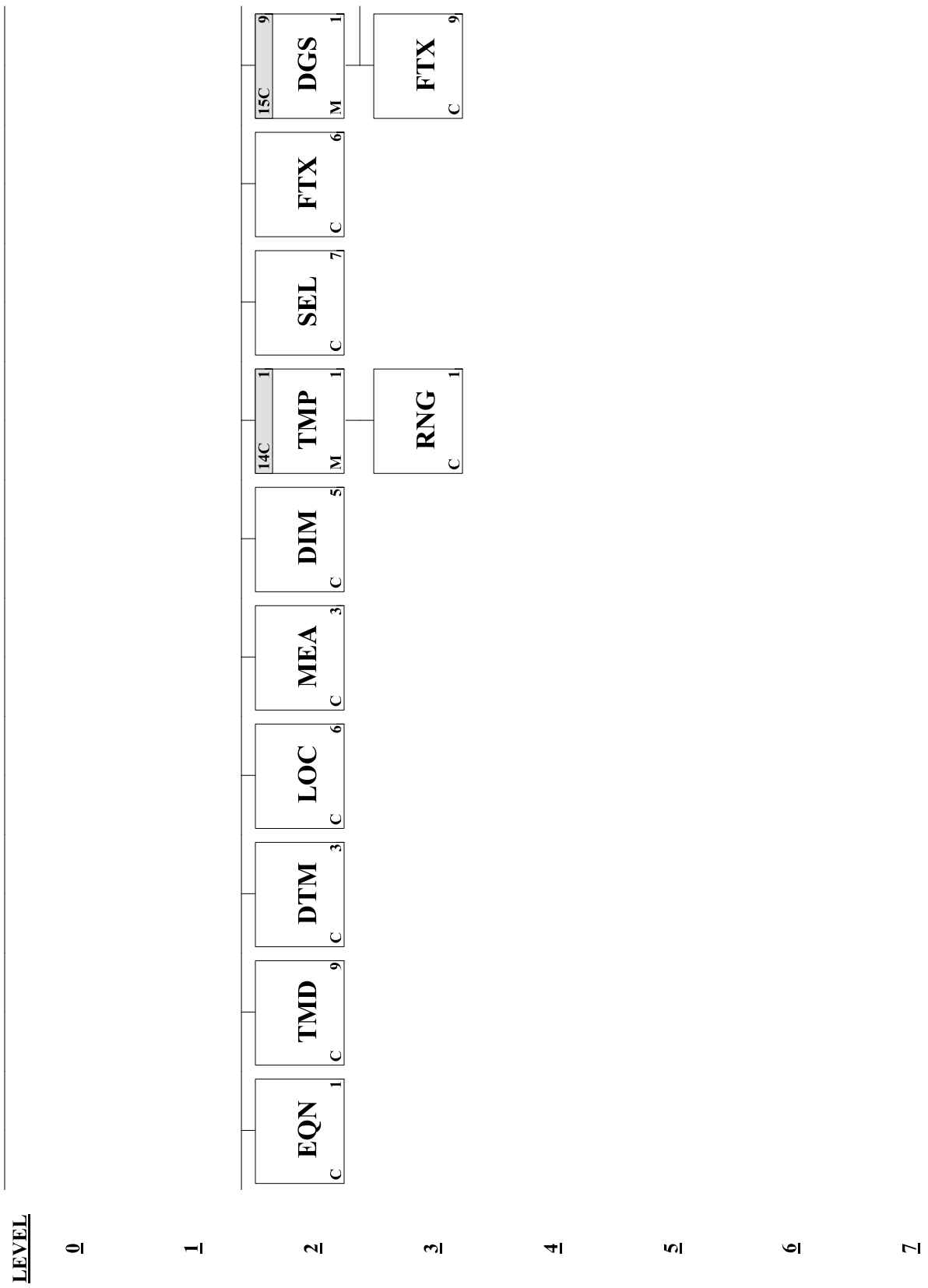
In order to avoid a heavy guideline where all local port specifics are expressed, the approach is to redirect the reader to an external document when applicable. The external document should be elaborated by each port when justified.

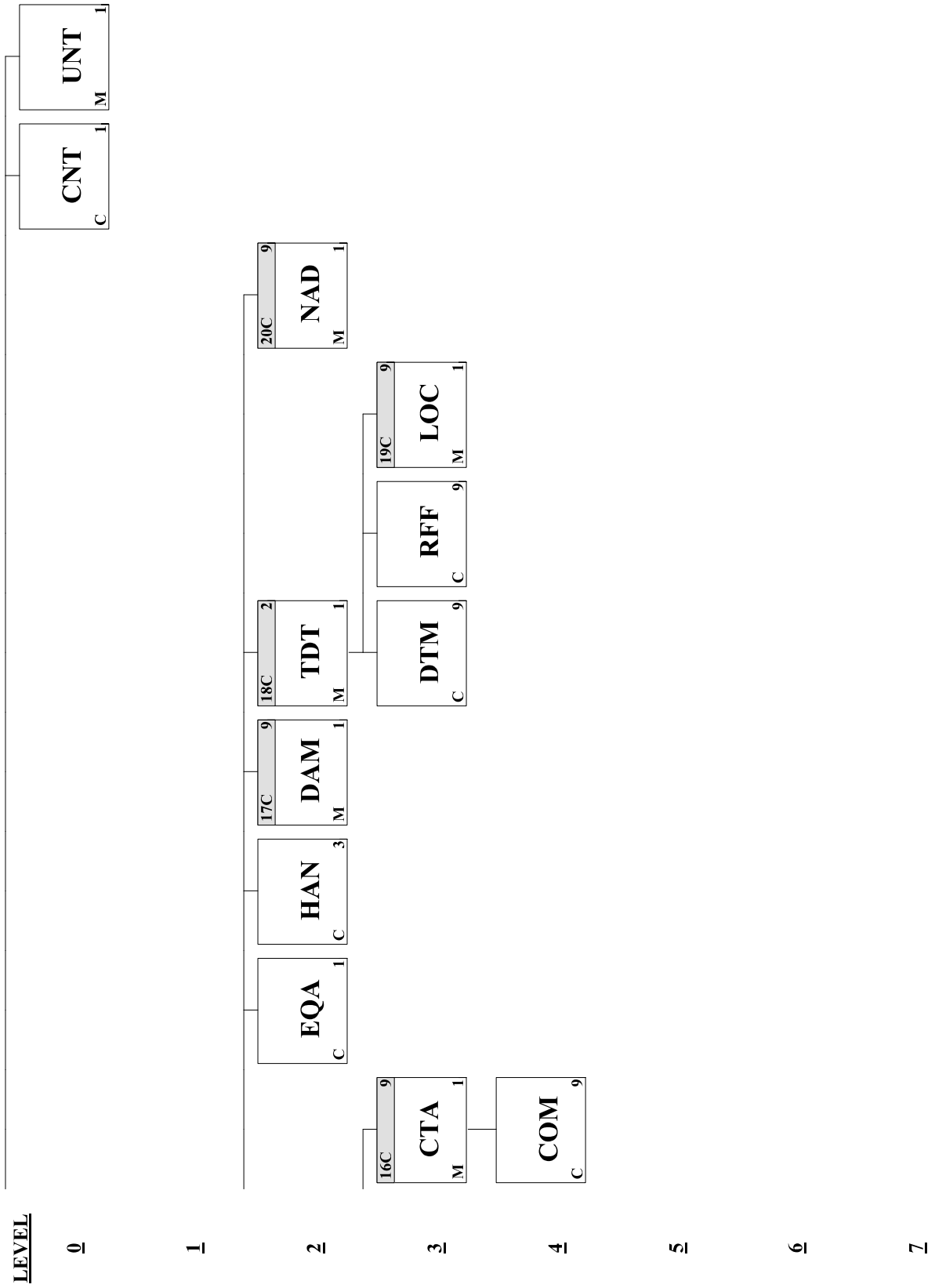
However all stakeholders should have the following in mind. The local specifications are complementary to this document. They are used to document current implementations, and should not be a justification for new or updated implementations to avoid the full adoption of this document.

| <u>Page No.</u> | <u>Pos. No.</u> | <u>Seg. ID</u> | <u>Name</u> | <u>Base Guide</u> | <u>User Status</u> | <u>Max.Use</u> | <u>Group Repeat</u> | <u>Notes and Comments</u> |
|-----------------|-----------------|----------------|--|-------------------|--------------------|----------------|---------------------|---------------------------|
| 8 | 00010 | UNH | Message Header | M | M | 1 | | |
| 10 | 00020 | BGM | Beginning of Message | M | M | 1 | | |
| 13 | 00040 | DTM | Date/Time/Period | C | O | 1 | | |
| 14 | 00060 | FTX | Free Text | C | O | 3 | | |
| | 00080 | | Segment Group 1: RFF-DTM | C | O | | 9 | |
| 17 | 00090 | RFF | Reference | M | M | 1 | | |
| 19 | 00100 | DTM | Date/Time/Period | C | O | 1 | | |
| | 00110 | | Segment Group 2: TDT-DTM-RFF-SG3 | C | R | | 1 | |
| 21 | 00120 | TDT | Transport Information | M | M | 1 | | |
| 24 | 00130 | DTM | Date/Time/Period | C | O | 2 | | |
| 25 | 00140 | RFF | Reference | C | O | 2 | | |
| | 00150 | | Segment Group 3: LOC-DTM | C | O | | 9 | |
| 28 | 00160 | LOC | Place/Location Identification | M | M | 1 | | |
| 30 | 00170 | DTM | Date/Time/Period | C | O | 9 | | |
| | 00180 | | Segment Group 4: NAD-SG5 | M | M | | 6 | |
| 32 | 00190 | NAD | Name and Address | M | M | 1 | | |
| | 00200 | | Segment Group 5: CTA-COM | C | D | | 1 | |
| 37 | 00210 | CTA | Contact Information | M | M | 1 | | |
| 38 | 00220 | COM | Communication Contact | C | O | 4 | | |
| | 00540 | | Segment Group 13: EQD-RFF-EQN -TMD-DTM-LOC-MEA-DIM-SG14 -SEL-FTX-SG15-EQA-HAN-SG17-SG18 -SG20 | M | M | | 9999 | |
| 42 | 00550 | EQD | Equipment Details | M | M | 1 | | |
| 45 | 00560 | RFF | Reference | C | O | 2 | | |
| 49 | 00570 | EQN | Number of Units | C | O | 1 | | |
| 50 | 00580 | TMD | Transport Movement Details | C | O | 9 | | |

| | | | | | | |
|-----|-------|-----|------------------------------------|---|---|---|
| 51 | 00590 | DTM | Date/Time/Period | C | O | 3 |
| 53 | 00610 | LOC | Place/Location Identification | C | R | 6 |
| 57 | 00620 | MEA | Measurements | C | R | 3 |
| 60 | 00630 | DIM | Dimensions | C | O | 5 |
| | 00640 | | Segment Group 14: TMP-RNG | C | O | 1 |
| 63 | 00650 | TMP | Temperature | M | M | 1 |
| 64 | 00660 | RNG | Range Details | C | O | 1 |
| 65 | 00670 | SEL | Seal Number | C | D | 7 |
| 67 | 00680 | FTX | Free Text | C | D | 6 |
| | 00700 | | Segment Group 15: DGS-FTX-SG16 | C | O | 9 |
| 71 | 00710 | DGS | Dangerous Goods | M | M | 1 |
| 74 | 00720 | FTX | Free Text | C | O | 9 |
| | 00740 | | Segment Group 16: CTA-COM | C | O | 9 |
| 77 | 00750 | CTA | Contact Information | M | M | 1 |
| 78 | 00760 | COM | Communication Contact | C | O | 9 |
| 79 | 00790 | EQA | Attached Equipment | C | O | 1 |
| 80 | 00810 | HAN | Handling Instructions | C | O | 3 |
| | 00820 | | Segment Group 17: DAM | C | O | 9 |
| 83 | 00830 | DAM | Damage | M | M | 1 |
| | 00850 | | Segment Group 18: TDT-DTM-RFF-SG19 | C | O | 2 |
| 86 | 00860 | TDT | Transport Information | M | M | 1 |
| 89 | 00870 | DTM | Date/Time/Period | C | O | 9 |
| 90 | 00880 | RFF | Reference | C | O | 9 |
| | 00890 | | Segment Group 19: LOC | C | O | 9 |
| 92 | 00900 | LOC | Place/Location Identification | M | M | 1 |
| | 00920 | | Segment Group 20: NAD | C | O | 9 |
| 95 | 00930 | NAD | Name and Address | M | M | 1 |
| 99 | 00980 | CNT | Control Total | C | R | 1 |
| 100 | 00990 | UNT | Message Trailer | M | M | 1 |







Segment: **UNH** Message Header
Position: 00010
Group:
Level: 0
Usage: Mandatory
Max Use: 1
Purpose: A service segment starting and uniquely identifying a message. The message type code for the Container announcement message is COPARN.
 Note: Container announcement messages conforming to this document must contain the following data in segment UNH, composite S009:
 Data element 0065 COPARN 0052 D 0054 16A 0051
 UN

Dependency Notes:**Semantic Notes:****Comments:**

Notes: Example: Message envelope number "1357924680", type "COPARN", UN/Edifact directory "D16A"

UNH+1357924680+COPARN:D:16A:UN'

Data Element Summary

| <u>Data Element</u> | <u>Component Element</u> | <u>Name</u> | <u>Base Attributes</u> | | <u>User Attributes</u> |
|---------------------|--------------------------|---|------------------------|----------|------------------------|
| 0062 | | MESSAGE REFERENCE NUMBER | M | 1 an..14 | M |
| | | Unique message reference assigned by the sender. | | | |
| S009 | | MESSAGE IDENTIFIER | M | 1 | M |
| | | Identification of the type, version etc. of the message being interchanged. | | | |
| | 0065 | Message type identifier | M | an..6 | M |
| | | Code identifying a type of message and assigned by its controlling agency. | | | |
| | | COPARN Container announcement message | | | |
| | 0052 | Message type version number | M | an..3 | M |
| | | Version number of a message type. | | | |
| | | D Draft version/UN/EDIFACT Directory | | | |
| | 0054 | Message type release number | M | an..3 | M |
| | | Release number within the current message type version number (0052). | | | |
| | | 16A Release 2016 - A | | | |
| | | 95B Release 1995 - B | | | |
| | | Only for backward compatibility. | | | |
| | 0051 | Controlling agency | M | an..2 | M |
| | | Code identifying the agency controlling the specification, maintenance and publication of the message type. | | | |
| | | UN UN/CEFACT | | | |
| | 0057 | Association assigned code | C | an..6 | O |
| | | Code, assigned by the association responsible for the design and maintenance of the | | | |

message type concerned, which further identifies the message.

Usage complemented in local document if mentioned in that document.

| | | | | | |
|-------------|---|----------|----------|---------------|----------|
| 0068 | COMMON ACCESS REFERENCE | C | 1 | an..35 | O |
| | Reference serving as a key to relate all subsequent transfers of data to the same business case or file. | | | | |
| | <i>Only for compatibility with SMDG proposal. It will not be processed by JUL system.</i> | | | | |
| S010 | STATUS OF THE TRANSFER | C | 1 | | X |
| | Statement that the message is one in a sequence of transfers relating to the same topic. | | | | |
| 0070 | Sequence message transfer number | M | | n..2 | X |
| | Number assigned by the sender indicating that the message is an addition or change of a previously sent message relating to the same topic. | | | | |
| 0073 | First/last sequence message transfer indication | C | | a1 | X |
| | Indication used for the first and last message in a sequence of the same type of message relating to the same topic. | | | | |

Segment: **BGM** Beginning of Message
Position: 00020
Group:
Level: 0
Usage: Mandatory
Max Use: 1
Purpose: A segment to indicate the beginning of a message and to transmit identifying number and the further specification of the message type (in data element 1001: Document name code), such as Empty container disposition order, Release order, Pre-arrival notice, Acceptance order, Empty container notice, Call-down order, On-hire request, On-hire order, Off-hire request, Off-hire notice.

Dependency Notes:**Semantic Notes:****Comments:****Notes:**

Data element 1225 shall be used according to the following rules:

- Code '1' is used to cancel an announcement list. Segment group 13 must be sent in order to comply the EDIFACT Standard, but can contain 'dummy' values.

- Codes '2' and '3' are to be used when a transport equipment or general cargo shipment is added or deleted from the announcement list.

- Code '4' shall be used to refer changes in EQD segment or at any other segment of group 13.

- Code '5' is to be used when a mistake was done at the message level, and replaces the whole message. The principal is that a change at the message header affects the whole document. In this case, no verification of the equipment will be made. Segment group 13 must be sent in order to comply the EDIFACT Standard, but can contain 'dummy' values.

- Code '9' indicates the original message. The arrival of a message with this function corresponds to the delivery of the document. Only after the correct reception and integration of this message in the system, the receiver is aware of the document. For each document only one message with this function can exist. For each document it cannot exist one message with function 9 and one with function 43.

Example: Transport equipment impending arrival advice AN75440947, original, message acknowledgement receipt is required.

BGM+104+AN75440947+9+AB'

Data Element Summary

| Data Element | Component Element | Name | Base Attributes | | User Attributes |
|---------------------|--------------------------|-----------------------|------------------------|---|------------------------|
| C002 | | DOCUMENT/MESSAGE NAME | C | 1 | R |

Identification of a type of document/message by code or name. Code preferred.

| | | | | |
|-------------|------------------------------------|--|--------------|------------------------|
| 1001 | Document name code | C | an..3 | R |
| | Code specifying the document name. | | | |
| | 11 | Federal label approval | | |
| | | Only for backward compability. It will be treated like '104'. | | |
| | 12 | Mill certificate | | |
| | | Only for backward compability. It will be treated like '104'. | | |
| | 104 | Transport equipment impending arrival advice | | |
| | 108 | Transport equipment empty release instruction | | |
| | | Only for compatibility with SMDG proposal. It will not be processed by JUL system. | | |
| | 125 | Transport empty equipment advice | | |
| | | Only for compatibility with SMDG proposal. It will not be processed by JUL system. | | |
| | 126 | Transport equipment acceptance order | | |
| | | Only for compatibility with SMDG proposal. It will not be processed by JUL system. | | |
| | 127 | Transport equipment special service instruction | | |
| | | Only for compatibility with SMDG proposal. It will not be processed by JUL system. | | |
| | 134 | Transport equipment on-hire request | | |
| | | Only for compatibility with SMDG proposal. It will not be processed by JUL system. | | |
| | 135 | Transport equipment on-hire order | | |
| | | Only for compatibility with SMDG proposal. It will not be processed by JUL system. | | |
| | 136 | Transport equipment off-hire request | | |
| | | Only for compatibility with SMDG proposal. It will not be processed by JUL system. | | |
| | 144 | Empty container disposition order | | |
| | | Only for compatibility with SMDG proposal. It will not be processed by JUL system. | | |
| | 170 | Cargo acceptance order | | |
| | | Only for compatibility with SMDG proposal. It will not be processed by JUL system. | | |
| | 264 | Transport equipment movement instruction | | |
| | | Only for compatibility with SMDG proposal. It will not be processed by JUL system. | | |
| | 1131 | Code list identification code | C | an..17 X |
| | 3055 | Code list responsible agency code | C | an..3 X |
| | 1000 | Document name | C | an..35 X |
| C106 | | DOCUMENT/MESSAGE IDENTIFICATION | C | 1 R |
| | | Identification of a document/message by its number and eventually its version or revision. | | |
| | 1004 | Document identifier | C | an..70 R |
| | | To identify a document. | | |

| | | | | |
|-------------|---|----------|---|----------|
| 1056 | Version identifier | C | an..9 | X |
| 1060 | Revision identifier | C | an..6 | X |
| 1225 | MESSAGE FUNCTION CODE | C | 1 an..3 | R |
| | Code indicating the function of the message. | | | |
| | 1 | | Cancellation | |
| | 2 | | Addition | |
| | 3 | | Deletion | |
| | 4 | | Change | |
| | 5 | | Replace | |
| | 9 | | Original | |
| | 22 | | Final transmission | |
| | | | Usage complemented in local document if mentioned in that document. | |
| 4343 | RESPONSE TYPE CODE | C | 1 an..3 | O |
| | Code specifying the type of acknowledgment required or transmitted. | | | |
| | AB | | Message acknowledgement | |
| 1373 | DOCUMENT STATUS CODE | C | 1 an..3 | X |
| 3453 | LANGUAGE NAME CODE | C | 1 an..3 | X |

Segment: **DTM** Date/Time/Period
Position: 00040
Group:
Level: 0
Usage: Conditional (Optional)
Max Use: 1
Purpose: A segment to indicate a date and time applying the message as a whole: - requested equipment positioning date and/or time - expected on-hire date and/or time - expected return period

Dependency Notes:**Semantic Notes:****Comments:**

Notes: Usage complemented in local document if mentioned in that document.

The usage of this segment is to provide the date/time at which the sender creates the message. In this case DE:2005 will be '137'.

Example: Message issued on 2002/02/01 at 14:21

DTM+137:200202011421:203'

Data Element Summary

| <u>Data Element</u> | <u>Component Element</u> | <u>Name</u> | <u>Base Attributes</u> | | <u>User Attributes</u> |
|---------------------|--------------------------|--|------------------------|--------|------------------------|
| C507 | | DATE/TIME/PERIOD | M | 1 | M |
| | | Date and/or time, or period relevant to the specified date/time/period type. | | | |
| | 2005 | Date or time or period function code qualifier | M | an..3 | M |
| | | Code qualifying the function of a date, time or period. | | | |
| | | 137 Document issue date time | | | |
| | 2380 | Date or time or period text | C | an..35 | R |
| | | The value of a date, a date and time, a time or of a period in a specified representation. | | | |
| | 2379 | Date or time or period format code | C | an..3 | R |
| | | Code specifying the representation of a date, time or period. | | | |
| | | 203 CCYYMMDDHHMM | | | |

Segment: **FTX** Free Text
Position: 00060
Group:
Level: 1
Usage: Conditional (Optional)
Max Use: 3
Purpose: A segment to specify free form or processable supplementary information, such as:
- change information - special instructions

Dependency Notes:**Semantic Notes:****Comments:**

Notes: Usage complemented in local document if mentioned in that document.

Example: Priority transport equipment

FTX+AAI+++PRIORITY TRANSPORT EQUIPMENT'

Data Element Summary

| <u>Data Element</u> | <u>Component Element</u> | <u>Name</u> | <u>Base Attributes</u> | | | <u>User Attributes</u> |
|---------------------|--------------------------|--|------------------------|---|---------|------------------------|
| 4451 | | TEXT SUBJECT CODE QUALIFIER | M | 1 | an..3 | M |
| | | Code qualifying the subject of the text. | | | | |
| | | AAI General information | | | | |
| | | CHG Change information | | | | |
| | | To be sent if the BGM:1225 <> '9'. | | | | |
| | | HAN Consignment handling instruction | | | | |
| 4453 | | FREE TEXT FUNCTION CODE | C | 1 | an..3 | X |
| C107 | | TEXT REFERENCE | C | 1 | | X |
| | | Coded reference to a standard text and its source. | | | | |
| | 4441 | Free text description code | M | | an..17 | X |
| | | Code specifying free form text. | | | | |
| | 1131 | Code list identification code | C | | an..17 | X |
| | | Code identifying a user or association maintained code list. | | | | |
| | 3055 | Code list responsible agency code | C | | an..3 | X |
| | | Code specifying the agency responsible for a code list. | | | | |
| C108 | | TEXT LITERAL | C | 1 | | R |
| | | Free text; one to five lines. | | | | |
| | 4440 | Free text | M | | an..512 | M |
| | | Free form text. | | | | |
| | 4440 | Free text | C | | an..512 | O |
| | | Free form text. | | | | |
| | 4440 | Free text | C | | an..512 | O |
| | | Free form text. | | | | |

| | | | | |
|-------------|-------------------------------------|----------|----------------|----------|
| 4440 | Free text Free form text. | C | an..512 | O |
| 4440 | Free text Free form text. | C | an..512 | O |
| 3453 | LANGUAGE NAME CODE | C | 1 an..3 | X |
| 4447 | FREE TEXT FORMAT CODE | C | 1 an..3 | X |

Group: **RFF** Segment Group 1: Reference
Position: 00080
Group:
Level: 1
Usage: Conditional (Optional)
Max Use: 9
Purpose: A group of segments to specify a reference relating to the whole message, and its date and/or time.
Notes: Usage complemented in local document if mentioned in that document.

This group has mainly three functions.

If the message reflects a new document, it means it has the function "Original", and the group identifies the document that is being sent. See below which code qualifiers apply for this purpose.

Another usage is o reference a previously issued message of the document at stake (DE:1153 = 'ACW'). When referring to previous messages, the methodology follows ITIGG's JM4/208 recommendation as stated in document JM4/ITIGG/96.101/v.131, with the exception of the inclusion of date information. For referenced message identification, segments RFF and DTM (when present) of this group will be used.

Both situations can be present in the message simultaneously when the message is not "Original".

Additional references like the Booking Number can be provided.

Segment Summary

| | Pos. | Seg. | | Req. | Max. | Group: |
|---|-------------------|------------------|--------------------|--------------------|-------------------|----------------------|
| | <u>No.</u> | <u>ID</u> | <u>Name</u> | <u>Des.</u> | <u>Use</u> | <u>Repeat</u> |
| M | 00090 | RFF | Reference | M | 1 | |
| O | 00100 | DTM | Date/Time/Period | C | 1 | |

Segment: **RFF** Reference
Position: 00090 (Trigger Segment)
Group: Segment Group 1 (Reference) Conditional (Optional)
Level: 1
Usage: Mandatory
Max Use: 1
Purpose: A segment to express a reference which applies to the entire message, such as: - container announcement reference number - booking reference number - reference to previous message - lessee's reference - lessor's reference - lease contract reference - return reference (of the party returning on hire equipment) - collect reference (of party collecting specified leased equipment) - carrier's agent reference number

Dependency Notes:**Semantic Notes:****Comments:****Notes:**

Usage complemented in local document if mentioned in that document.

To identify the reference as a previous message, the reference code qualifier should be 'ACW'.

When identifying the document, the reference code qualifiers should be one of this set: 'AAY', 'CN', 'CV', 'Z01', 'Z02'.

Example: Equipment of transport carrier's reference number 2004/002546-1.

RFF+CN:2004/002546-1'

Example: Reference to a previous messages identified by AN50938803.

RFF+ACW:AN50938803'

Data Element Summary

| Data Element | Component Element | Name | Base Attributes | | User Attributes |
|---------------------|--------------------------|---------------------------------|------------------------|--------------|--|
| C506 | | REFERENCE | M | 1 | M |
| | | Identification of a reference. | | | |
| | 1153 | Reference code qualifier | M | an..3 | M |
| | | Code qualifying a reference. | | | |
| | | AAY | | | Carrier's agent reference number The value with this qualifier is used to identify the document. |
| | | ACA | | | Cargo acceptance order reference number Only for compatibility with SMDG proposal. It will not be processed by JUL system. |
| | | ACW | | | Reference number to previous message |
| | | AKA | | | Container disposition order reference number Only for compatibility with SMDG proposal. It will not be processed by JUL system. |

| | |
|-----|---|
| ARJ | Personal identity card number Only for compatibility with SMDG proposal. It will not be processed by JUL system. |
| ATX | Transport equipment acceptance order reference |
| ATY | Transport equipment release order reference |
| BM | Bill of lading number |
| BN | Consignment identifier, carrier assigned |
| CN | Carrier's reference number The value with this qualifier is used to identify the document. |
| CV | Container operators reference number The value with this qualifier is used to identify the document. |
| RE | Release number Only for compatibility with SMDG proposal. It will not be processed by JUL system. |
| Z01 | Queue Usage complemented in local document if mentioned in that document. |
| Z02 | Logistics Service Provider Usage complemented in local document if mentioned in that document. |

| | | | | |
|-------------|--|----------|---------------|----------|
| 1154 | Reference identifier Identifies a reference. | C | an..70 | O |
| 1156 | Document line identifier | C | an..6 | X |
| 1056 | Version identifier | C | an..9 | X |
| 1060 | Revision identifier | C | an..6 | X |

Segment: **DTM** Date/Time/Period
Position: 00100
Group: Segment Group 1 (Reference) Conditional (Optional)
Level: 2
Usage: Conditional (Optional)
Max Use: 1
Purpose: A segment to indicate date and/or time related to the reference.

Dependency Notes:**Semantic Notes:****Comments:**

Notes: Usage complemented in local document if mentioned in that document.

The complete meaning of this date depends of the type of reference in the previous RFF segment, stated in RFF:C506:1153 data element.

Example: Date/time of the reference: "2003/10/08 - 10:15"

DTM+171:200310081015:203'

Data Element Summary

| <u>Data Element</u> | <u>Component Element</u> | <u>Name</u> | <u>Base Attributes</u> | | <u>User Attributes</u> |
|---------------------|--------------------------|---|------------------------|--------|------------------------|
| C507 | | DATE/TIME/PERIOD | M | 1 | M |
| | | Date and/or time, or period relevant to the specified date/time/period type. | | | |
| | 2005 | Date or time or period function code qualifier | M | an..3 | M |
| | | Code qualifying the function of a date, time or period. | | | |
| | | 7 Effective from date/time <i>Only for compatibility with SMDG proposal. It will not be processed by JUL system.</i> | | | |
| | | 36 Expiry date <i>Only for compatibility with SMDG proposal. It will not be processed by JUL system.</i> | | | |
| | | 171 Reference date/time | | | |
| | | 203 Execution date/time, requested <i>Only for compatibility with SMDG proposal. It will not be processed by JUL system.</i> | | | |
| | 2380 | Date or time or period text | C | an..35 | R |
| | | The value of a date, a date and time, a time or of a period in a specified representation. | | | |
| | 2379 | Date or time or period format code | C | an..3 | R |
| | | Code specifying the representation of a date, time or period. | | | |
| | | 102 CCYYMMDD <i>Only for compatibility with SMDG proposal. It will not be processed by JUL system.</i> | | | |
| | | 203 CCYYMMDDHHMM | | | |

| | |
|------------------|--|
| Group: | TDT Segment Group 2: Transport Information |
| Position: | 00110 |
| Group: | |
| Level: | 1 |
| Usage: | Conditional (Required) |
| Max Use: | 1 |
| Purpose: | A group of segments to indicate details of the movement of containers by sea and by inland carriers, such as mode and means of transport, and locations. |
| Notes: | Usage complemented in local document if mentioned in that document. |
| | By default, equipment of transport or general cargo enters the port area by land in order to be loaded into a ship, or leaves the port area by land because they were discharged from a ship, except in transshipping situations where they enter and leave by sea. |
| | On situations where a Port Community System (PCS) is in place and contains vessel call information gathered and identified by a vessel call identification (also known as visit id), then these messages are supposed not to contain any information regarding vessels. |
| | The connection between these reports and the vessel call is made by referring the PCS vessel call identification (visit id) in the RFF segment included in this group. |
| | The vessel call must had been previously declared/opened in the PCS system, and will be matched with Customs Process Id (Contramarca). |
| | However, if the message sender does not have visit id in its system, it must use additional data about the vessel and the call, to allow the correct matching between the message and the vessel call. This scenario is not advised. |
| | Note that according to segment SG2:TDT definition, the reference to the inland transport can be done, as long as it applies to all transport equipment or general cargo shipment described in the document. In this situations, the described above about the visit id also applies. |

Segment Summary

| | Pos. | Seg. | | Req. | Max. | Group: |
|---|-------------|-------------|--|-------------|-------------|---------------|
| | No. | ID | Name | Des. | Use | Repeat |
| M | 00120 | TDT | Transport Information | M | 1 | |
| O | 00130 | DTM | Date/Time/Period | C | 2 | |
| O | 00140 | RFF | Reference | C | 2 | |
| | 00150 | | Segment Group 3: Place/Location Identification | C | | 9 |

Segment: **TDT** **Transport Information**
Position: 00120 (Trigger Segment)
Group: Segment Group 2 (Transport Information) Conditional (Required)
Level: 1
Usage: Mandatory
Max Use: 1
Purpose: A segment to indicate information related to the main carriage stage of the transport (sea), such as voyage number or indication sea transport, vessel and carrier or liner. Information on related inland transport stage(s) can also be included, such as mode of inland transport, means of transport, and inland carrier, such as: - main-carriage transport (sea) - pre- or on-carriage transport - second pre- or on-carriage transport

Dependency Notes:**Semantic Notes:****Comments:**

Notes: Usage complemented in local document if mentioned in that document.

Example: Main carriage transport, maritime, voyage number 0220, shipping company is Maersk, vessel SL PRIDE with IMO 8212661.

TDT+20+0220+1+++MAE:172::MAERSK+++8212661:146:54:SL PRIDE:DK'

Data Element Summary

| Data Element | Component Element | Name | Base Attributes | | | User Attributes |
|---------------------|--------------------------|--|------------------------|----------|---------------|------------------------|
| 8051 | | TRANSPORT STAGE CODE QUALIFIER | M | 1 | an..3 | M |
| | | Code qualifying a specific stage of transport. | | | | |
| | | 1 Inland transport | | | | |
| | | 20 Main-carriage transport | | | | |
| 8028 | | MEANS OF TRANSPORT JOURNEY IDENTIFIER | C | 1 | an..17 | O |
| | | To identify a journey of a means of transport. | | | | |
| | | Usage complemented in local document if mentioned in that document. | | | | |
| | | Means of transport operator's voyage number. | | | | |
| | | Either this element or SG2:RFF must be used to specify a voyage number, or none of them are needed in case there is an occurrence of SG2:RFF referring the visit id. | | | | |
| C220 | | MODE OF TRANSPORT | C | 1 | | O |
| | | Method of transport code or name. Code preferred. | | | | |
| | 8067 | Transport mode name code | C | | an..3 | O |
| | | Code specifying the name of a mode of transport. | | | | |
| | | UN Recommendation 19 - Codes for Modes of Transport. | | | | |
| | | 1 Maritime | | | | |
| | | 2 Rail | | | | |

| | | | | | |
|-------------|-------------|---|------------|---------------|----------|
| | 3 | Road | | | |
| | 7 | Fixed installation | | | |
| | 8 | Inland water | | | |
| C001 | 8066 | Transport mode name | C | an..17 | X |
| | | TRANSPORT MEANS | C 1 | | O |
| | | Code and/or name identifying the type of means of transport. | | | |
| | | Usage complemented in local document if mentioned in that document. | | | |
| | 8179 | Transport means description code | C | an..8 | O |
| | | Code specifying the means of transport. | | | |
| | | UN Recommendation 28 - Code for Types of Means of Transport. | | | |
| | 1131 | Code list identification code | C | an..17 | X |
| | 3055 | Code list responsible agency code | C | an..3 | X |
| | 8178 | Transport means description | C | an..17 | O |
| | | Free form description of the means of transport. | | | |
| C040 | | CARRIER | C 1 | | O |
| | | Identification of a carrier by code and/or by name. Code preferred. | | | |
| | | Usage complemented in local document if mentioned in that document. | | | |
| | 3127 | Carrier identifier | C | an..17 | R |
| | | To identify a carrier. | | | |
| | | Means of transport operator's code. | | | |
| | 1131 | Code list identification code | C | an..17 | O |
| | | Code identifying a user or association maintained code list. | | | |
| | 172 | Carriers | | | |
| | 3055 | Code list responsible agency code | C | an..3 | O |
| | | Code specifying the agency responsible for a code list. | | | |
| | | Only for compatibility with SMDG proposal. It will not be processed by JUL system. | | | |
| | 20 | BIC (Bureau International des Containeurs) | | | |
| | 87 | Assigned by carrier | | | |
| | 166 | US, National Motor Freight Classification Association | | | |
| | 184 | AU, ACOS (Australian Chamber of Shipping) | | | |
| | SMD | SMDG (Shiplanning Message Development Group) | | | |
| | ZZZ | Mutually defined | | | |
| | 3126 | Carrier name | C | an..35 | O |
| | | Name of a carrier. | | | |
| 8101 | | TRANSIT DIRECTION INDICATOR CODE | C 1 | an..3 | X |
| C401 | | EXCESS TRANSPORTATION INFORMATION | C 1 | | X |
| | | To provide details of reason for, and responsibility for, use of transportation other than normally utilized. | | | |
| | 8457 | Excess transportation reason code | M | an..3 | X |
| | | Code specifying the reason for excess transportation. | | | |

| | | | | | |
|-------------|-------------|--|----------|----------------|----------|
| | 8459 | Excess transportation responsibility code | M | an..3 | X |
| | | Code specifying the responsibility for excess transportation. | | | |
| | 7130 | Customer shipment authorisation identifier | C | an..17 | X |
| | | To identify the authorisation to ship issued by the customer. | | | |
| C222 | | TRANSPORT IDENTIFICATION | C | 1 | O |
| | | Code and/or name identifying the means of transport. | | | |
| | | Usage complemented in local document if mentioned in that document. | | | |
| | 8213 | Transport means identification name identifier | C | an..35 | O |
| | | Identifies the name of the transport means. | | | |
| | | Usage complemented in local document if mentioned in that document. | | | |
| | | Identification of the means of transport by number. | | | |
| | | Either this element or SG2:RFF must be used to specify a means of transport identification, or none of them are needed in case there is an occurrence of SG2:RFF referring the visit id. | | | |
| | 1131 | Code list identification code | C | an..17 | O |
| | | Code identifying a user or association maintained code list. | | | |
| | | 103 Call sign directory | | | |
| | | 146 Means of transport identification | | | |
| | 3055 | Code list responsible agency code | C | an..3 | O |
| | | Code specifying the agency responsible for a code list. | | | |
| | | 11 Lloyd's register of shipping | | | |
| | | 54 IMO (International Maritime Organisation) | | | |
| | 8212 | Transport means identification name | C | an..70 | O |
| | | Name identifying a means of transport. | | | |
| | 8453 | Transport means nationality code | C | an..3 | O |
| | | Code specifying the nationality of a means of transport. | | | |
| | | Flag of Means of Transport (ISO 3166 country code, 2-alpha). | | | |
| 8281 | | TRANSPORT MEANS OWNERSHIP INDICATOR CODE | C | 1 an..3 | X |
| C003 | | POWER TYPE | C | 1 | X |
| | | To specify the type of power. | | | |
| | 7041 | Power type code | C | an..3 | X |
| | | Code indicating the type of power. | | | |
| | 1131 | Code list identification code | C | an..17 | X |
| | | Code identifying a user or association maintained code list. | | | |
| | 3055 | Code list responsible agency code | C | an..3 | X |
| | | Code specifying the agency responsible for a code list. | | | |
| | 7040 | Power type description | C | an..17 | X |
| | | Description of the type of power. | | | |

Segment: **DTM** Date/Time/Period
Position: 00130
Group: Segment Group 2 (Transport Information) Conditional (Required)
Level: 2
Usage: Conditional (Optional)
Max Use: 2
Purpose: A segment to specify the date(s) and time(s) related to main carriage transport. The segment may also be used to specify date(s) and time(s) related to pre-/on-carriage transport or inland transport.

Dependency Notes:**Semantic Notes:****Comments:**

Notes: Usage complemented in local document if mentioned in that document.

Example: Train estimated date/time of arrival, and the delivery of good as consequence, is 2018/10/31 14:35

DTM+132:201810311435:203'

Data Element Summary

| <u>Data Element</u> | <u>Component Element</u> | <u>Name</u> | <u>Base Attributes</u> | | <u>User Attributes</u> |
|---------------------|--------------------------|--|------------------------|--------|------------------------|
| C507 | | DATE/TIME/PERIOD | M | 1 | M |
| | | Date and/or time, or period relevant to the specified date/time/period type. | | | |
| | 2005 | Date or time or period function code qualifier | M | an..3 | M |
| | | Code qualifying the function of a date, time or period. | | | |
| | | 132 Transport means arrival date time, estimated | | | |
| | | 133 Transport means departure date/time, estimated | | | |
| | 2380 | Date or time or period text | C | an..35 | R |
| | | The value of a date, a date and time, a time or of a period in a specified representation. | | | |
| | 2379 | Date or time or period format code | C | an..3 | R |
| | | Code specifying the representation of a date, time or period. | | | |
| | | 203 CCYYMMDDHHMM | | | |

Segment: **RFF** Reference
Position: 00140
Group: Segment Group 2 (Transport Information) Conditional (Required)
Level: 2
Usage: Conditional (Optional)
Max Use: 2
Purpose: A segment to provide a reference for the liner service, such as: - conference - marketing organization - syndicate - vessel sharing agreement

Dependency Notes:**Semantic Notes:****Comments:**

Notes: Usage complemented in local document if mentioned in that document.

Although this segment is marked as optional, in the JUL implementation this is the preferred way to identify a visit id (vessel call). The usage is to put this id in DE:1154 associated with qualifier 'ATZ' in 1153. This identification is provided by the JUL system.

Example: Leixões visit id PTLEI12018001032

RFF+ATZ:PTLEI12018001032'

Example: Additional voyage number 7199

RFF+VON:7199'

Data Element Summary

| Data Element | Component Element | Name | Base Attributes | | User Attributes |
|---------------------|--------------------------|--|------------------------|---------------|------------------------|
| C506 | | REFERENCE | M | 1 | M |
| | | Identification of a reference. | | | |
| | 1153 | Reference code qualifier | M | an..3 | M |
| | | Code qualifying a reference. | | | |
| | | ATZ Ship's stay reference number Corresponding to the Visit Id. | | | |
| | | MA Ship notice/manifest number Only for compatibility with SMDG proposal. It will not be processed by JUL system. | | | |
| | | VM Vessel identifier Only for compatibility with SMDG proposal. It will not be processed by JUL system. | | | |
| | | VON Voyage number | | | |
| | 1154 | Reference identifier | C | an..70 | O |
| | | Identifies a reference. | | | |
| | 1156 | Document line identifier | C | an..6 | X |

| | | | | |
|-------------|----------------------------|----------|--------------|----------|
| 1056 | Version identifier | C | an..9 | X |
| 1060 | Revision identifier | C | an..6 | X |

Group: **LOC** **Segment Group 3: Place/Location Identification**
Position: 00150
Group: Segment Group 2 (Transport Information) Conditional (Required)
Level: 2
Usage: Conditional (Optional)
Max Use: 9
Purpose: A segment group to indicate places and ports corresponding to a transport stage.
Notes: Only for compatibility with SMDG proposal. It will not be processed by JUL system.

Segment Summary

| | Pos. | Seg. | | Req. | Max. | Group: |
|---|-------------------|------------------|-------------------------------|--------------------|-------------------|----------------------|
| | <u>No.</u> | <u>ID</u> | <u>Name</u> | <u>Des.</u> | <u>Use</u> | <u>Repeat</u> |
| M | 00160 | LOC | Place/Location Identification | M | 1 | |
| O | 00170 | DTM | Date/Time/Period | C | 9 | |

Segment: **LOC** Place/Location Identification
Position: 00160 (Trigger Segment)
Group: Segment Group 3 (Place/Location Identification) Conditional (Optional)
Level: 2
Usage: Mandatory
Max Use: 1
Purpose: A segment to specify a location associated with a transport stage such as final port or place of discharge or loading.

Dependency Notes:**Semantic Notes:****Comments:**

Notes: Only for compatibility with SMDG proposal. It will not be processed by JUL system.

Data Element Summary

| <u>Data Element</u> | <u>Component Element</u> | <u>Name</u> | <u>Base Attributes</u> | | <u>User Attributes</u> |
|---------------------|--------------------------|---|------------------------|---------|------------------------|
| 3227 | | LOCATION FUNCTION CODE QUALIFIER Code identifying the function of a location. Refer to D.16A Data Element Dictionary for acceptable code values. | M | 1 an..3 | M |
| C517 | | LOCATION IDENTIFICATION Identification of a location by code or name. | C | 1 | O |
| | 3225 | Location identifier To identify a location. | C | an..35 | O |
| | 1131 | Code list identification code Code identifying a user or association maintained code list. | C | an..17 | O |
| | 3055 | Code list responsible agency code Code specifying the agency responsible for a code list. Refer to D.16A Data Element Dictionary for acceptable code values. | C | an..3 | O |
| | 3224 | Location name Name of the location. | C | an..256 | O |
| C519 | | RELATED LOCATION ONE IDENTIFICATION Identification the first related location by code or name. | C | 1 | O |
| | 3223 | First related location identifier To identify a first related location. | C | an..35 | O |
| | 1131 | Code list identification code Code identifying a user or association maintained code list. | C | an..17 | O |
| | 3055 | Code list responsible agency code Code specifying the agency responsible for a code list. Refer to D.16A Data Element Dictionary for acceptable code values. | C | an..3 | O |
| | 3222 | First related location name Name of first related location. | C | an..70 | O |

| | | | | |
|-------------|---|----------|----------------|----------|
| C553 | RELATED LOCATION TWO IDENTIFICATION | C | 1 | O |
| | Identification of second related location by code or name. | | | |
| 3233 | Second related location identifier | C | an..35 | O |
| | To identify a second related location. | | | |
| 1131 | Code list identification code | C | an..17 | O |
| | Code identifying a user or association maintained code list. | | | |
| 3055 | Code list responsible agency code | C | an..3 | O |
| | Code specifying the agency responsible for a code list. Refer to D.16A Data Element Dictionary for acceptable code values. | | | |
| 3232 | Second related location name | C | an..70 | O |
| | Name of the second related location. | | | |
| 5479 | RELATION CODE | C | 1 an..3 | O |
| | Code specifying a relation. | | | |

Segment: **DTM** Date/Time/Period
Position: 00170
Group: Segment Group 3 (Place/Location Identification) Conditional (Optional)
Level: 3
Usage: Conditional (Optional)
Max Use: 9
Purpose: A segment to specify date(s) and time(s) related to a location.

Dependency Notes:**Semantic Notes:****Comments:**

Notes: Only for compatibility with SMDG proposal. It will not be processed by JUL system.

Data Element Summary

| Data Element | Component Element | Name | Base Attributes | | User Attributes |
|---------------------|--------------------------|---|------------------------|---------------|------------------------|
| C507 | | DATE/TIME/PERIOD | M | 1 | M |
| | | Date and/or time, or period relevant to the specified date/time/period type. | | | |
| | 2005 | Date or time or period function code qualifier | M | an..3 | M |
| | | Code qualifying the function of a date, time or period. Refer to D.16A Data Element Dictionary for acceptable code values. | | | |
| | 2380 | Date or time or period text | C | an..35 | O |
| | | The value of a date, a date and time, a time or of a period in a specified representation. | | | |
| | 2379 | Date or time or period format code | C | an..3 | O |
| | | Code specifying the representation of a date, time or period. Refer to D.16A Data Element Dictionary for acceptable code values. | | | |

Group: **NAD** Segment Group 4: Name and Address
Position: 00180
Group:
Level: 1
Usage: Mandatory
Max Use: 6
Purpose: A group of segments to identify a party and/or addresses and a related contact and references.
Notes: Usage complemented in local document if mentioned in that document.

This group is used to identify the entities related with the whole document. However, some of them may be stated at detail level (SG13).

It will be possible that the entity that sends the message, might not be the same that operates the terminal. It is advised to be sent this group twice, at least, in order to specify the message sender and the terminal operator.

Segment Summary

| | Pos. | Seg. | | Req. | Max. | Group: |
|---|-------------------|------------------|--------------------------------------|--------------------|-------------------|----------------------|
| | <u>No.</u> | <u>ID</u> | <u>Name</u> | <u>Des.</u> | <u>Use</u> | <u>Repeat</u> |
| M | 00190 | NAD | Name and Address | M | 1 | |
| | 00200 | | Segment Group 5: Contact Information | C | | 1 |

Segment: **NAD** Name and Address
Position: 00190 (Trigger Segment)
Group: Segment Group 4 (Name and Address) Mandatory
Level: 1
Usage: Mandatory
Max Use: 1
Purpose: A segment to identify the party's name and address, and function, and other addresses, such as: - ordering customer - ordering customer agent - message recipient - message sender - place of positioning - place of collection - final place of positioning - carrier agent (sea) - charges payer - place of acceptance name and address - invoicee - stripping address - return address - on hire party direct interchange - off hire party direct interchange - container survey agency

Dependency Notes:**Semantic Notes:****Comments:****Notes:**

Usage complemented in local document if mentioned in that document.

The entities are to be identified by their EORI. In Portugal the EORI id is composed by PT+[VAT number].

Example: Terminal operator identified by PT541495122.

NAD+TR+PT541495122'

Data Element Summary

| Data Element | Component Element | Name | Base Attributes | | User Attributes |
|---------------------|--------------------------|--|------------------------|----------|------------------------|
| | | | M | 1 | an..3 |
| 3035 | | PARTY FUNCTION CODE QUALIFIER | | | |
| | | Code giving specific meaning to a party. | | | |
| | AG | Agent | | | |
| | | If present in SG6, then it is not needed here. | | | |
| | CA | Carrier | | | |
| | CF | Container operator/lessee | | | |
| | | Only for compatibility with SMDG proposal. It will not be processed by JUL system. | | | |
| | CPD | Charges payer at destination | | | |
| | | Only for compatibility with SMDG proposal. It will not be processed by JUL system. | | | |
| | EX | Exporter | | | |
| | | Usage complemented in local document if mentioned in that document. | | | |
| | FW | Freight forwarder | | | |
| | | Only for compatibility with SMDG proposal. It will not be processed by JUL system. | | | |

| | | | | | |
|-------------|--|---|----------|---------------|----------|
| | GA | Road carrier | | | |
| | GT | Rail carrier | | | |
| | HA | Party which delivers consignments to the terminal Only for compatibility with SMDG proposal. It will not be processed by JUL system. | | | |
| | HR | Shipping line service Only for compatibility with SMDG proposal. It will not be processed by JUL system. | | | |
| | IM | Importer Usage complemented in local document if mentioned in that document. | | | |
| | MR | Message recipient | | | |
| | MS | Document/message issuer/sender | | | |
| | OY | Ordering customer Only for compatibility with SMDG proposal. It will not be processed by JUL system. | | | |
| | TR | Terminal operator | | | |
| C082 | PARTY IDENTIFICATION DETAILS | | C | 1 | R |
| | Identification of a transaction party by code. | | | | |
| 3039 | Party identifier | | M | an..35 | M |
| | Code specifying the identity of a party. | | | | |
| | Number corresponding to EORI of the entity, or another code mutually agreed between the parties. | | | | |
| 1131 | Code list identification code | | C | an..17 | O |
| | Code identifying a user or association maintained code list. | | | | |
| | Usage complemented in local document if mentioned in that document. | | | | |
| | 160 | Party identification | | | |
| | 172 | Carriers | | | |
| 3055 | Code list responsible agency code | | C | an..3 | O |
| | Code specifying the agency responsible for a code list. | | | | |
| | Only for compatibility with SMDG proposal. It will not be processed by JUL system. | | | | |
| | Refer to D.16A Data Element Dictionary for acceptable code values. | | | | |
| C058 | NAME AND ADDRESS | | C | 1 | O |
| | Unstructured name and address: one to five lines. | | | | |
| | Only for compatibility with SMDG proposal. It will not be processed by JUL system. | | | | |
| 3124 | Name and address description | | M | an..35 | M |
| | Free form description of a name and address line. | | | | |
| 3124 | Name and address description | | C | an..35 | O |
| | Free form description of a name and address line. | | | | |
| 3124 | Name and address description | | C | an..35 | O |
| | Free form description of a name and address line. | | | | |

| | | | | | |
|-------------|-------------|--|----------|---------------|---------------|
| | 3124 | Name and address description | C | an..35 | O |
| | | Free form description of a name and address line. | | | |
| | 3124 | Name and address description | C | an..35 | O |
| | | Free form description of a name and address line. | | | |
| C080 | | PARTY NAME | C | 1 | X |
| | | Identification of a transaction party by name, one to five lines. Party name may be formatted. | | | |
| | 3036 | Party name | M | an..70 | X |
| | | Name of a party. | | | |
| | 3036 | Party name | C | an..70 | X |
| | | Name of a party. | | | |
| | 3036 | Party name | C | an..70 | X |
| | | Name of a party. | | | |
| | 3036 | Party name | C | an..70 | X |
| | | Name of a party. | | | |
| | 3036 | Party name | C | an..70 | X |
| | | Name of a party. | | | |
| | 3045 | Party name format code | C | an..3 | X |
| | | Code specifying the representation of a party name. | | | |
| C059 | | STREET | C | 1 | X |
| | | Street address and/or PO Box number in a structured address: one to four lines. | | | |
| | 3042 | Street and number or post office box identifier | M | an..35 | X |
| | | To identify a street and number and/or Post Office box number. | | | |
| | 3042 | Street and number or post office box identifier | C | an..35 | X |
| | | To identify a street and number and/or Post Office box number. | | | |
| | 3042 | Street and number or post office box identifier | C | an..35 | X |
| | | To identify a street and number and/or Post Office box number. | | | |
| | 3042 | Street and number or post office box identifier | C | an..35 | X |
| | | To identify a street and number and/or Post Office box number. | | | |
| 3164 | | CITY NAME | C | 1 | an..35 |
| C819 | | COUNTRY SUBDIVISION DETAILS | C | 1 | X |
| | | To specify a country subdivision, such as state, canton, county, prefecture. | | | |
| | 3229 | Country subdivision identifier | C | an..9 | X |
| | | To identify a country subdivision, such as state, canton, county, prefecture. | | | |
| | 1131 | Code list identification code | C | an..17 | X |
| | | Code identifying a user or association maintained code list. | | | |
| | 3055 | Code list responsible agency code | C | an..3 | X |
| | | Code specifying the agency responsible for a code list. | | | |
| | 3228 | Country subdivision name | C | an..70 | X |
| | | Name of a country subdivision, such as state, canton, county, prefecture. | | | |

| | | | | | |
|-------------|-----------------------------------|----------|----------|---------------|----------|
| 3251 | POSTAL IDENTIFICATION CODE | C | 1 | an..17 | X |
| 3207 | COUNTRY IDENTIFIER | C | 1 | an..3 | O |

Identification of the name of the country or other geographical entity as defined in ISO 3166-1 and UN/ECE Recommendation 3.

Usage complemented in local document if mentioned in that document.

ISO country code (2-alpha).

Group: **CTA** Segment Group 5: Contact Information
Position: 00200
Group: Segment Group 4 (Name and Address) Mandatory
Level: 2
Usage: Conditional (Dependent)
Max Use: 1
Purpose: A group of segments to identify a contact and its communications related to the party.
Notes: Usage complemented in local document if mentioned in that document.

Segment Summary

| | Pos. | Seg. | | Req. | Max. | Group: |
|---|-------------------|------------------|-----------------------|--------------------|-------------------|----------------------|
| | <u>No.</u> | <u>ID</u> | <u>Name</u> | <u>Des.</u> | <u>Use</u> | <u>Repeat</u> |
| M | 00210 | CTA | Contact Information | M | 1 | |
| O | 00220 | COM | Communication Contact | C | 4 | |

Segment: **CTA Contact Information**
Position: 00210 (Trigger Segment)
Group: Segment Group 5 (Contact Information) Conditional (Dependent)
Level: 2
Usage: Mandatory
Max Use: 1
Purpose: A segment to identify a person or department of a message sender and/or message recipient, such as: - information contact

Dependency Notes:**Semantic Notes:****Comments:**

Notes: Example: Contact Mr. Rui Silva.

CTA+IC+:RUI SILVA'

Data Element Summary

| <u>Data Element</u> | <u>Component Element</u> | <u>Name</u> | <u>Base Attributes</u> | <u>User Attributes</u> |
|---------------------|--------------------------|---|------------------------|------------------------|
| 3139 | | CONTACT FUNCTION CODE Code specifying the function of a contact (e.g. department or person). IC Information contact | C 1 an..3 | R |
| C056 | | CONTACT DETAILS Code and/or name of a contact such as a department or employee. Code preferred. | C 1 | R |
| | 3413 | Contact identifier | C an..17 | X |
| | 3412 | Contact name Name of a contact, such as a department or employee. | C an..256 | R |

Segment: **COM** **Communication Contact**
Position: 00220
Group: Segment Group 5 (Contact Information) Conditional (Dependent)
Level: 3
Usage: Conditional (Optional)
Max Use: 4
Purpose: A segment to identify a communication number of a person or department to whom communication should be directed.

Dependency Notes:**Semantic Notes:****Comments:**

Notes: Example: Contact by phone number 229390700.

COM+229390700:TE'

Example: Contact by email jose.silva@mybusiness.com

COM+JOSE.SILVA AT MYBUSINESS.COM:EM'

Data Element Summary

| <u>Data Element</u> | <u>Component Element</u> | <u>Name</u> | <u>Base Attributes</u> | | <u>User Attributes</u> |
|---------------------|--------------------------|--|------------------------|---------|------------------------|
| C076 | | COMMUNICATION CONTACT | M | 3 | M |
| | | Communication number of a department or employee in a specified channel. | | | |
| | 3148 | Communication address identifier | M | an..512 | M |
| | | To identify a communication address. | | | |
| | 3155 | Communication means type code | M | an..3 | M |
| | | Code specifying the type of communication address. | | | |
| | | AL Cellular phone | | | |
| | | EM Electronic mail | | | |
| | | FX Telefax | | | |
| | | TE Telephone | | | |
| | | TL Telex | | | |
| | | Only for compatibility with SMDG proposal. It will not be processed by JUL system. | | | |
| | | XF X.400 address | | | |
| | | Only for compatibility with SMDG proposal. It will not be processed by JUL system. | | | |

| | |
|------------------|--|
| Group: | EQD Segment Group 13: Equipment Details |
| Position: | 00540 |
| Group: | |
| Level: | 1 |
| Usage: | Mandatory |
| Max Use: | 9999 |
| Purpose: | A group of segments to specify (groups of) containers (with guidelines) in which goods are transported or which are taken on- hire or off-hire. |
| Notes: | <p>If the group is to announce movements of transport equipment, then the equipment must be identified and its tare must be provided. If it is full then information about the seal must be provided. Also in element EQD:8155 and if the equipment is a container, the container ISO type according to ISO 6346 (2nd and 3rd editions) is sent. In this standard the first number of this codification provides the container length. If unknown then use the code defined for element EQD:8155 by UN/EDIFACT.</p> <p>The group is also to announce movements of general cargo (EQD:8053 = 'BB').</p> <p>In this case the group should contain information on a general cargo shipment of goods (shipment hereafter to simplify). This shipment can be identified by the transport document id only (in segment RFF), or complemented by a reference number provided by the terminal operator (also in segment RFF having RFF:1153 = 'UCN').</p> <p>Complementary to the weight (in segment MEA), information on the number of volumes should be provided (in segment FTX with FTX:4451 = 'PAC'), considering that bulk cargo count as 1 volume.</p> <p>Additionally data on Marks & Numbers must be provided. However, it is possible that in a single shipment, several Marks & Numbers may exist. Due to COPARN message structure definition, comparing with the possible number of different Marks & Numbers, the following usage was defined.</p> <p>Assuming a scenario where there are 2 shipments, but belonging to the same Bill of Lading, with id OPT51228, to be discharged from the means of transport (import). One shipment with total weight 350 Kg, identified by 00001 (id provided by the terminal operator), has 2 volumes. One volume is marked with VOL32, the other volume is marked with VOL47. The other shipment, with total weight of 410 Kg, identified by 00002 (id provided by the terminal operator), has 3 volumes: DD78, FF36 and LL14.</p> <p>One issue here is that the weight of each volume may not be available.</p> <p>This COPARN MIG usage for this exemple scenario will be the following. Send one occurrence of SG13 for each Marks & Numbers in stake. In each occurrence, use segment RFF to identify the Bill of Lading (or other transport document), the complementary reference provided by the terminal operator and the Marks & Numbers. Also, in the occurrence of segment MEA, the weight of the whole shipment should be present, and in segment FTX (with FTX:4451 = 'PAC') the</p> |

number of volumes of the whole shipment.

For the described scenario, the segment sequence would be something like:

```

...
EQD+BB++++3+6'
RFF+BM:OPT51228'
RFF+UCN:00001'
RFF+ACH:VOL32'
...
MEA+AAE+AAB+KGM:350'
...
FTX+PAC+++2:... '
...
EQD+BB++++3+6'
RFF+BM:OPT51228'
RFF+UCN:00001'
RFF+ACH:VOL47'
...
MEA+AAE+AAB+KGM:350'
...
FTX+PAC+++2:... '
...
EQD+BB++++3+6'
RFF+BM:OPT51228'
RFF+UCN:00002'
RFF+ACH:DD78'
...
MEA+AAE+AAB+KGM:410'
...
FTX+PAC+++3:... '
...
EQD+BB++++3+6'
RFF+BM:OPT51228'
RFF+UCN:00002'
RFF+ACH:FF36'
...
MEA+AAE+AAB+KGM:410'
...
FTX+PAC+++3:... '
...
EQD+BB++++3+6'
RFF+BM:OPT51228'
RFF+UCN:00002'
RFF+ACH:LL14'
...
MEA+AAE+AAB+KGM:410'
...
FTX+PAC+++3:... '
...

```


This structure usage allows the receiver to reproduce the set of Marks & Numbers of a particular shipment, even if it is identified only by a single Bill of Lading (or other transport document).

If there are no marks associated with the shipment, then report "No Marks".

Segment Summary

| | Pos. | Seg. | | Req. | Max. | Group: |
|---|-------------------|------------------|---|--------------------|-------------------|----------------------|
| | <u>No.</u> | <u>ID</u> | <u>Name</u> | <u>Des.</u> | <u>Use</u> | <u>Repeat</u> |
| M | 00550 | EQD | Equipment Details | M | 1 | |
| O | 00560 | RFF | Reference | C | 2 | |
| O | 00570 | EQN | Number of Units | C | 1 | |
| O | 00580 | TMD | Transport Movement Details | C | 9 | |
| O | 00590 | DTM | Date/Time/Period | C | 3 | |
| R | 00610 | LOC | Place/Location Identification | C | 6 | |
| R | 00620 | MEA | Measurements | C | 3 | |
| O | 00630 | DIM | Dimensions | C | 5 | |
| | 00640 | | Segment Group 14: Temperature | C | | 1 |
| D | 00670 | SEL | Seal Number | C | 7 | |
| D | 00680 | FTX | Free Text | C | 6 | |
| | 00700 | | Segment Group 15: Dangerous Goods | C | | 9 |
| O | 00790 | EQA | Attached Equipment | C | 1 | |
| O | 00810 | HAN | Handling Instructions | C | 3 | |
| | 00820 | | Segment Group 17: Damage | C | | 9 |
| | 00850 | | Segment Group 18: Transport Information | C | | 2 |
| | 00920 | | Segment Group 20: Name and Address | C | | 9 |

Segment: **EQD** **Equipment Details**
Position: 00550 (Trigger Segment)
Group: Segment Group 13 (Equipment Details) Mandatory
Level: 1
Usage: Mandatory
Max Use: 1
Purpose: A segment to specify a container, container size and type, and full/empty indication; also to specify the type of rail car on which a related container is transported.

Dependency Notes:**Semantic Notes:****Comments:**

Notes: This segment is to identify the transport equipment, its size/type, its status and if it is full or empty.

If the transport equipment is other than an ISO container then DE:8053 shall have the proper value from the EDIFACT code list associated with this element.

If the transport equipment is an ISO container then DE:8155 shall have the ISO type according standard ISO 6346. If this code is unknown then place the proper value from EDIFACT code list associated with this element.

It is also used to indicate that the following segments in the group occurrence are related with general cargo (DE:8053 = 'BB').

Example: Container CGTU 200311/5, 20 ft, export/load, full.

EQD+CN+CGTU2003115+21:102:6++2+5'

Example: Container GSTU 000029/0, 40 ft General purpose (ISO 40GP), transhipped, empty

EQD+CN+GSTU0000290+40GP:102:5++6+4'

Example: Trailer Z-53791, import/unload, full

EQD+TE+Z53791+14:102:6++3+5'

Example: group related with general cargo being imported

EQD+BB++++3+6'

Data Element Summary

| Data Element | Component Element Name | Base Attributes | User Attributes |
|---------------------|---|------------------------|------------------------|
| 8053 | EQUIPMENT TYPE CODE QUALIFIER | M 1 an..3 | M |
| | Code qualifying a type of equipment. | | |
| | BB Un-containerized cargo (breakbulk) | | |
| | This code is to be used when reporting general cargo shipment | | |

| | | | | |
|-------------|---|--|-----------------|----------|
| | | movement. | | |
| | BPP | Truck and trailer combination being transported | | |
| | | It will be processed like 'TE'. | | |
| | | Only for compatibility with SMDG proposal. | | |
| | CH | Chassis | | |
| | | It will be treated like 'TE'. | | |
| | | Only for compatibility with SMDG proposal. | | |
| | CN | Container | | |
| | PA | Pallet | | |
| | PL | Platform | | |
| | RG | Reefer generator | | |
| | | Only for compatibility with SMDG proposal. It will not be processed by JUL system. | | |
| | SW | Swap body | | |
| | | It will be treated like 'CN'. | | |
| | | Only for compatibility with SMDG proposal. | | |
| | TE | Trailer | | |
| C237 | EQUIPMENT IDENTIFICATION | | C 1 | D |
| | Marks (letters/numbers) identifying equipment. | | | |
| | This element is not to be used when reporting general cargo (DE:8053 = 'BB'). | | | |
| | 8260 Equipment identifier | | C an..17 | R |
| | To identify equipment. | | | |
| | 1131 Code list identification code | | C an..17 | X |
| | 3055 Code list responsible agency code | | C an..3 | X |
| | 3207 Country identifier | | C an..3 | X |
| C224 | EQUIPMENT SIZE AND TYPE | | C 1 | D |
| | Code and or name identifying size and type of equipment. Code preferred. | | | |
| | This element is not to be used when reporting general cargo shipment (DE:8053 = 'BB'). | | | |
| | 8155 Equipment size and type description code | | C an..10 | R |
| | Code specifying the size and type of equipment. | | | |
| | In case of ISO container equipment (DE:8053 = 'CN') and if its ISO type is known then send the Size/Type information according to ISO 6346 (2nd, 3rd edition and amendments). | | | |
| | Otherwise use UN/EDIFACT code list for Data Element 8155. | | | |
| | Refer to D.16A Data Element Dictionary for acceptable code values. | | | |
| | 1131 Code list identification code | | C an..17 | R |
| | Code identifying a user or association maintained code list. | | | |
| | 102 Size and type | | | |
| | 3055 Code list responsible agency code | | C an..3 | R |
| | Code specifying the agency responsible for a code list. | | | |

| | | | | | |
|-------------|---|---|----------|----------------|----------|
| | 5 | ISO (International Organization for Standardization) | | | |
| | 6 | UN/ECE (United Nations - Economic Commission for Europe) | | | |
| 8154 | Equipment size and type description | | C | an..35 | O |
| | Free form description of the size and type of equipment. | | | | |
| 8077 | EQUIPMENT SUPPLIER CODE | | C | 1 an..3 | O |
| | Code specifying the party that is the supplier of the equipment. | | | | |
| | <i>Only for compatibility with SMDG proposal. It will not be processed by JUL system.</i> | | | | |
| | Refer to D.16A Data Element Dictionary for acceptable code values. | | | | |
| 8249 | EQUIPMENT STATUS CODE | | C | 1 an..3 | R |
| | Code specifying the status of equipment. | | | | |
| | 1 | Continental | | | |
| | | <i>Only for compatibility with SMDG proposal. It will not be processed by JUL system.</i> | | | |
| | 2 | Export | | | |
| | 3 | Import | | | |
| | 6 | Transshipment | | | |
| | 10 | Positioning | | | |
| | | <i>Only for compatibility with SMDG proposal. It will not be processed by JUL system.</i> | | | |
| | 11 | Delivery | | | |
| | | <i>Only for compatibility with SMDG proposal. It will not be processed by JUL system.</i> | | | |
| | 12 | Redelivery | | | |
| | | <i>Only for compatibility with SMDG proposal. It will not be processed by JUL system.</i> | | | |
| | 13 | Repair | | | |
| 8169 | FULL OR EMPTY INDICATOR CODE | | C | 1 an..3 | R |
| | Code indicating whether an object is full or empty. | | | | |
| | 4 | Empty | | | |
| | 5 | Full | | | |
| | 6 | No volume available | | | |
| | | To be used in case of general cargo (EQD:8053 = 'BB'). | | | |
| 4233 | MARKING INSTRUCTIONS CODE | | C | 1 an..3 | X |

Segment: **RFF** Reference

Position: 00560

Group: Segment Group 13 (Equipment Details) Mandatory

Level: 2

Usage: Conditional (Optional)

Max Use: 2

Purpose: A segment to express a reference which applies to the particular container, such as:
 - container sequence number - lower equipment serial number of range - upper equipment serial number of range - referring sequence number - reference at place of positioning - reference at place of collection - related container announcement reference (reference to Empty container disposition order) - transport costs reference number - carrier agent's reference number - freight forwarder's reference

Dependency Notes:**Semantic Notes:****Comments:****Notes:**

Usage complemented in local document if mentioned in that document.

If DE:1153 = 'BM' then the segment is referring the Bill of Lading identification (id). Although not the only transport document used in the business it is the most common. This is particular important when the group is referring to general cargo shipment since the transport document id is needed to identify the shipment. For this reason one occurrence of this segment with DE:1153 = 'BM' is required when EQD:8053 = 'BB'.

If DE:1153 = 'UCN' then the segment is referring a unique identification provided by the terminal operator in the context of general cargo movement (EQD:8053 = 'BB'). This number provides complementary data to identify the shipment, together with the transport document identification, given in another occurrence of this segment.

If DE:1153 = 'ACH' then the segment is referring the Marks & Numbers of a shipment. It must be send if EQD:8053 = 'BB'.

If DE:1153 = 'BN' then the segment is referring to a shipping line/agent booking number/id. Optional.

This reference refers to documents and not to messages.

Example: Booking number NB/0123/03.

RFF+BN:NB/0123/03'

Data Element Summary

| Data Element | Component Element | Name | Base Attributes | | User Attributes |
|---------------------|--------------------------|---------------------------------|------------------------|--------------|------------------------|
| C506 | | REFERENCE | M | 1 | M |
| | | Identification of a reference. | | | |
| | 1153 | Reference code qualifier | M | an..3 | M |

Code qualifying a reference.

| | |
|------|--|
| AAE | Goods declaration number Only for compatibility with SMDG proposal. It will not be processed by JUL system. |
| AAO | Consignment identifier, consignee assigned Only for compatibility with SMDG proposal. It will not be processed by JUL system. |
| AA Y | Carrier's agent reference number Only for compatibility with SMDG proposal. It will not be processed by JUL system. |
| ABT | Goods declaration document identifier, Customs Only for compatibility with SMDG proposal. It will not be processed by JUL system. |
| ABZ | Vehicle licence number Only for compatibility with SMDG proposal. It will not be processed by JUL system. |
| ACD | Additional reference number Only for compatibility with SMDG proposal. It will not be processed by JUL system. |
| ACH | Packaging unit identification |
| AHI | Transport contract reference number Only for compatibility with SMDG proposal. It will not be processed by JUL system. |
| AKB | Container prefix Only for compatibility with SMDG proposal. It will not be processed by JUL system. |
| AKG | Vehicle Identification Number (VIN) Only for compatibility with SMDG proposal. It will not be processed by JUL system. |
| AKW | Transport costs reference number Only for compatibility with SMDG proposal. It will not be processed by JUL system. |
| ARJ | Personal identity card number Only for compatibility with SMDG proposal. It will not be processed by JUL system. |
| ATW | Flat rack container bundle identification number Only for compatibility with SMDG proposal. It will not be processed by JUL system. |
| AUA | Place of positioning reference Only for compatibility with SMDG proposal. It will not be processed by JUL system. |
| BM | Bill of lading number |
| BN | Consignment identifier, carrier assigned |
| BST | Blockstow reference Only for compatibility with SMDG proposal. It will not be processed by JUL system. |
| BT | Batch number/lot number Only for compatibility with SMDG proposal. It will |

| | | | | |
|-------------|---------------------------------|----------|--------------|----------|
| | Identifies a reference. | | | |
| 1156 | Document line identifier | C | an..6 | X |
| 1056 | Version identifier | C | an..9 | X |
| 1060 | Revision identifier | C | an..6 | X |

Segment: **EQN** Number of Units
Position: 00570
Group: Segment Group 13 (Equipment Details) Mandatory
Level: 2
Usage: Conditional (Optional)
Max Use: 1
Purpose: A segment to specify the number of containers of the same size and type in case of equipment guidelines.

Dependency Notes:**Semantic Notes:****Comments:**

Notes: Usage complemented in local document if mentioned in that document.

Example: Three equipment units

EQN+3'

Data Element Summary

| <u>Data Element</u> | <u>Component Element</u> | <u>Name</u> | <u>Base Attributes</u> | | <u>User Attributes</u> |
|---------------------|--------------------------|--|------------------------|-------|------------------------|
| C523 | | NUMBER OF UNIT DETAILS Identification of number of units and its purpose. | M | 1 | M |
| | 6350 | Units quantity To specify the number of units. | C | n..15 | R |
| | 6353 | Unit type code qualifier | C | an..3 | X |

Segment: **TMD** Transport Movement Details
Position: 00580
Group: Segment Group 13 (Equipment Details) Mandatory
Level: 2
Usage: Conditional (Optional)
Max Use: 9
Purpose: A segment to indicate a Full Container Load (FCL) or a Less than Full Container Load (LCL).

Dependency Notes:**Semantic Notes:****Comments:**

Notes: Only for compatibility with SMDG proposal. It will not be processed by JUL system.

Data Element Summary

| <u>Data Element</u> | <u>Component Element</u> | <u>Name</u> | <u>Base Attributes</u> | | <u>User Attributes</u> |
|---------------------|--------------------------|---|------------------------|----------|------------------------|
| | | | | | |
| C219 | | MOVEMENT TYPE Description of type of service for movement of cargo. | C | 1 | O |
| | 8335 | Movement type description code Code specifying a type of movement. Refer to D.16A Data Element Dictionary for acceptable code values. | C | an..3 | O |
| | 8334 | Movement type description Free form description of a type of movement. | C | an..35 | O |
| 8332 | | EQUIPMENT PLAN DESCRIPTION Free form description of the equipment plan. | C | 1 an..26 | O |
| 8341 | | HAULAGE ARRANGEMENTS CODE Code specifying the arrangement for the haulage of goods. Refer to D.16A Data Element Dictionary for acceptable code values. | C | 1 an..3 | O |

Segment: **DTM** Date/Time/Period
Position: 00590
Group: Segment Group 13 (Equipment Details) Mandatory
Level: 2
Usage: Conditional (Optional)
Max Use: 3
Purpose: A segment to indicate a date and time relating to the container, such as: - estimated positioning date/time - ultimate release date/time - expected on-hire date and/or time

Dependency Notes:**Semantic Notes:****Comments:**

Notes: Usage complemented in local document if mentioned in that document.

This segment can be used to inform when the transport equipment or the general cargo shipment being announced, is planned to be delivered.

It is also used to provide the moment when Verified Gross Measure was obtained if this actually took place.

It is also used to provide information on the latest moment the transport equipment or the general cargo shipment should be released.

Example: Transport equipment estimated delivery date/time on 2002/02/01 at 14:21.

DTM+395:200202011421:203'

Data Element Summary

| Data Element | Component Element | Name | Base Attributes | | User Attributes |
|---------------------|--------------------------|--|------------------------|--------------|------------------------|
| C507 | | DATE/TIME/PERIOD | M | 1 | M |
| | | Date and/or time, or period relevant to the specified date/time/period type. | | | |
| | 2005 | Date or time or period function code qualifier | M | an..3 | M |
| | | Code qualifying the function of a date, time or period. | | | |
| | | 7 Effective from date/time Only for compatibility with SMDG proposal. It will not be processed by JUL system. | | | |
| | | 36 Expiry date Only for compatibility with SMDG proposal. It will not be processed by JUL system. | | | |
| | | 94 Production/manufacture date Only for compatibility with SMDG proposal. It will not be processed by JUL system. | | | |
| | | 171 Reference date/time Only for compatibility with SMDG proposal. It will not be processed by JUL system. | | | |
| | | 181 Positioning date/time of equipment | | | |

| | | | | |
|-------------|--|----------|---------------|--|
| | | | | |
| | | | | Only for compatibility with SMDG proposal. It will not be processed by JUL system. |
| 201 | Equipment pick-up date / time | | | Only for compatibility with SMDG proposal. It will not be processed by JUL system. |
| 371 | Hydrotest date | | | Only for compatibility with SMDG proposal. It will not be processed by JUL system. |
| 376 | Biannual terminal inspection date | | | Only for compatibility with SMDG proposal. It will not be processed by JUL system. |
| 377 | Federal Highway Administration (FHWA) inspection date | | | Only for compatibility with SMDG proposal. It will not be processed by JUL system. |
| 378 | Container Safety Convention (CSC) inspection date | | | Only for compatibility with SMDG proposal. It will not be processed by JUL system. |
| 379 | Periodic inspection date | | | Only for compatibility with SMDG proposal. It will not be processed by JUL system. |
| 395 | Equipment positioning date/time, estimated | | | |
| 396 | Equipment positioning date/time, requested | | | Only for compatibility with SMDG proposal. It will not be processed by JUL system. |
| 397 | Equipment positioning date/time, ultimate | | | Only for compatibility with SMDG proposal. It will not be processed by JUL system. |
| 400 | Cargo release date/time, ultimate | | | |
| | | | | Usage complemented in local document if mentioned in that document. |
| 798 | Verified gross mass determination date/time | | | |
| 2380 | Date or time or period text | C | an..35 | R |
| | The value of a date, a date and time, a time or of a period in a specified representation. | | | |
| 2379 | Date or time or period format code | C | an..3 | R |
| | Code specifying the representation of a date, time or period. | | | |
| 102 | CCYYMMDD | | | Only for compatibility with SMDG proposal. It will not be processed by JUL system. |
| 203 | CCYYMMDDHHMM | | | |

Segment: **LOC** Place/Location Identification
Position: 00610
Group: Segment Group 13 (Equipment Details) Mandatory
Level: 2
Usage: Conditional (Required)
Max Use: 6
Purpose: A segment to specify ports/locations associated with the sea transport of a container in case of export, such as: - place of discharge - transhipment place

Dependency Notes:**Semantic Notes:****Comments:**

Notes: Usage complemented in local document if mentioned in that document.

This segment is to provide the ports that are in the route of the transport equipment or the general cargo shipment. The points to be reported depend of the status stated in element 8249 of segment EQD.

In relation to the ports of loading and discharge (DE:3227 in {'9', '11'}) both must be reported.

If the transport equipment or general cargo shipment is being imported (EQD:8249 = '3') then the port of loading is the port in which the transport equipment or the general cargo shipment was moved into the vessel that will be discharged.

If the transport equipment or general cargo shipment is being exported (EQD:8249 = '2') then the port of discharge is the port in which the transport equipment or the general cargo shipment will be moved out of the vessel that will be loaded.

If the transport equipment or general cargo shipment is being transhipped (EQD:8249 = '6'), the port of loading is reported and is other than the port/place of the means of transport call, then the port of loading is the port in which the transport equipment or general cargo shipment was moved into the vessel that will be discharged. In this case, the message will be treated like a discharge movement.

If the transport equipment or general cargo shipment is being transhipped (EQD:8249 = '6'), the port of discharge is reported and is other than the port/place of the means of transport call, then the port of discharge is the port in which the transport equipment or general cargo shipment will be moved out of the vessel that will be loaded. In this case, the message will be treated like a loading movement.

If the transport equipment or general cargo shipment is being transhipped (EQD:8249 = '6'), and both ports are reported as the port/place of the means of transport call, an error (to be defined) will be reported and the message rejected.

If the transport equipment or the general cargo shipment is being transhipped (EQD:8249 = '6'), and both ports are reported but other than the port/place of the means of transport call, then the message will be treated like a loading movement.

If DE:3227 = '28', then DE:3225 reports the final country or final customs' territory

where to the equipment is aimed to go.

In some situations, the code in DE:C517:3225 is not sufficient to identify the location for deliver or reception of goods, due to the lack of detail inherent to the reference code. This is mainly applied when DE:3227 in {'83', '88'} in that a particular installation may be identified. To mitigate this limitation, two options are considered to provide complementary data. One is by using DE:C519:3223 based on a non-standard list. The other and preferred, is to identify the entity operating the installation in SG20:NAD with the value of SG20:NAD:3035 in {'JB', 'JC'}.

Example: Port of loading Rotterdam

LOC+9+NLRM:139:6'

Example: Country of destination Russia

LOC+28+RU:162:5'

Data Element Summary

| <u>Data Element</u> | <u>Component Element</u> | <u>Name</u> | <u>Base Attributes</u> | | <u>User Attributes</u> |
|---------------------|--------------------------|--|------------------------|---------|------------------------|
| | | | M | 1 an..3 | M |
| 3227 | | LOCATION FUNCTION CODE QUALIFIER | | | |
| | | Code identifying the function of a location. | | | |
| | 5 | Place of departure Only for compatibility with SMDG proposal. It will not be processed by JUL system. | | | |
| | 7 | Place of delivery Only for backward compability. It will be treated like '65'. | | | |
| | 8 | Place of destination Only for compatibility with SMDG proposal. It will not be processed by JUL system. | | | |
| | 9 | Place of loading | | | |
| | 11 | Place of discharge | | | |
| | 13 | Place of transshipment Only for compatibility with SMDG proposal. It will not be processed by JUL system. | | | |
| | 15 | Place of transfer responsibility Only for compatibility with SMDG proposal. It will not be processed by JUL system. | | | |
| | 28 | Country of destination of goods This code is to provide the final country or final customs' territory where the transport equipment or the general cargo shipment is aimed to go. | | | |
| | 33 | Baseport of discharge Only for compatibility with SMDG proposal. It will not be processed by JUL system. | | | |
| | 34 | Baseport of loading | | | |

| | | | | | |
|-------------|-------------|---|----------|---------------|--|
| | | | | | Only for compatibility with SMDG proposal. It will not be processed by JUL system. |
| | 65 | Final port or place of discharge | | | |
| | 83 | Place of delivery (by on carriage) | | | |
| | 88 | Place of receipt | | | |
| | 98 | Place of empty equipment despatch | | | Only for compatibility with SMDG proposal. It will not be processed by JUL system. |
| | 147 | Transport means stowage location | | | Only for compatibility with SMDG proposal. It will not be processed by JUL system. |
| | 154 | Place/location of on-hire | | | Only for compatibility with SMDG proposal. It will not be processed by JUL system. |
| | 155 | Place/location of off-hire | | | Only for compatibility with SMDG proposal. It will not be processed by JUL system. |
| | 170 | Final port of discharge | | | Only for compatibility with SMDG proposal. It will not be processed by JUL system. |
| | 171 | Place of destination for pre-stacking prior to stowage | | | Only for compatibility with SMDG proposal. It will not be processed by JUL system. |
| | 175 | Activity location | | | Only for compatibility with SMDG proposal. It will not be processed by JUL system. |
| C517 | | LOCATION IDENTIFICATION | C | 1 | R |
| | | Identification of a location by code or name. | | | |
| | 3225 | Location identifier | C | an..35 | R |
| | | To identify a location. | | | |
| | | UN/ECE Recommendation 16 (3rd edition) - UN/LOCODE- Codes for Port and Other Locations (Doc. Ref. ECE/TRADE/227) upgraded to 2003.2 version if DE:3227 <> '28'. | | | |
| | | ISO country code (2-alpha) if DE:3227 = '28'. | | | |
| | 1131 | Code list identification code | C | an..17 | O |
| | | Code identifying a user or association maintained code list. | | | |
| | | Usage complemented in local document if mentioned in that document. | | | |
| | | 139 Port | | | |
| | | 162 Country | | | |
| | 3055 | Code list responsible agency code | C | an..3 | O |
| | | Code specifying the agency responsible for a code list. | | | |
| | | Usage complemented in local document if mentioned in that document. | | | |
| | | 5 ISO (International Organization for Standardization) | | | |
| | | Use this code when DE:3225 specifies a country code. | | | |

| | 6 | UN/ECE (United Nations - Economic Commission for Europe) | | | |
|-------------|-------------|---|----------|----------------|----------|
| | | Use this code when DE:3225 specifies a LOCODE. | | | |
| | 3224 | Location name | C | an..256 | O |
| | | Name of the location. | | | |
| | | Only for compatibility with SMDG proposal. It will not be processed by JUL system. | | | |
| C519 | | RELATED LOCATION ONE IDENTIFICATION | C | 1 | O |
| | | Identification the first related location by code or name. | | | |
| | | Usage complemented in local document if mentioned in that document. | | | |
| | | The usage of this element is to provide an alternative to identify a location or a particular installation located in the place identified in DE:C517:3225. | | | |
| | 3223 | First related location identifier | C | an..35 | O |
| | | To identify a first related location. | | | |
| | | Usage complemented in local document if mentioned in that document. | | | |
| | 1131 | Code list identification code | C | an..17 | O |
| | | Code identifying a user or association maintained code list. | | | |
| | | Usage complemented in local document if mentioned in that document. | | | |
| | | ZZZ Mutually defined | | | |
| | 3055 | Code list responsible agency code | C | an..3 | O |
| | | Code specifying the agency responsible for a code list. | | | |
| | | Usage complemented in local document if mentioned in that document. | | | |
| | | ZZZ Mutually defined | | | |
| | 3222 | First related location name | C | an..70 | O |
| | | Name of first related location. | | | |
| | | Only for compatibility with SMDG proposal. It will not be processed by JUL system. | | | |
| C553 | | RELATED LOCATION TWO IDENTIFICATION | C | 1 | O |
| | | Identification of second related location by code or name. | | | |
| | | Only for compatibility with SMDG proposal. It will not be processed by JUL system. | | | |
| | 3233 | Second related location identifier | C | an..35 | O |
| | | To identify a second related location. | | | |
| | 1131 | Code list identification code | C | an..17 | O |
| | | Code identifying a user or association maintained code list. | | | |
| | 3055 | Code list responsible agency code | C | an..3 | O |
| | | Code specifying the agency responsible for a code list. | | | |
| | | Refer to D.16A Data Element Dictionary for acceptable code values. | | | |
| | 3232 | Second related location name | C | an..70 | O |
| | | Name of the second related location. | | | |
| 5479 | | RELATION CODE | C | 1 an..3 | X |

Segment: **MEA** Measurements
Position: 00620
Group: Segment Group 13 (Equipment Details) Mandatory
Level: 2
Usage: Conditional (Required)
Max Use: 3
Purpose: A segment to specify measurement, other than dimensions, associated with the container, such as: - tare weight - gross weight

Dependency Notes:**Semantic Notes:****Comments:**

Notes: Usage complemented in local document if mentioned in that document.

This segment is used to provide information about the weights related with the equipment or the general cargo shipment.

In compliance with the SOLAS Convention, if the Verified Gross Weight is known, then this must be the value to report.

If the equipment is empty, then a gross weight of zero must be declared.

Example: Equipment gross weight 31703 kilograms.

MEA+AAE+AET+KGM:31703'

Example: Equipment verified gross weight according to SOLAS Convention rules and procedures is 24023 kilograms.

MEA+AAE+VGM+KGM:24023'

Example: General cargo shipment weight 123753 kilograms.

MEA+AAE+AAB+KGM:123753'

Data Element Summary

| Data Element | Component Element | Name | Base Attributes | User Attributes |
|---------------------|--------------------------|--|------------------------|------------------------|
| 6311 | | MEASUREMENT PURPOSE CODE QUALIFIER | 1 an..3 | M |
| | | Code qualifying the purpose of the measurement. | | |
| | AAE | Measurement | | |
| C502 | | MEASUREMENT DETAILS | C 1 | R |
| | | Identification of measurement type. | | |
| | 6313 | Measured attribute code | C an..3 | R |
| | | Code specifying the attribute measured. | | |
| | AAA | Net weight | | |
| | | Only for compatibility with code 'AAL' in SMDG proposal. It will not be processed by JUL system. | | |

| | | | | | |
|-------------|-------------|---|----------|---------------|----------|
| | AAB | Goods item gross weight Use in case of general cargo shipment (EQD:8053 = 'BB'). | | | |
| | AAO | Humidity Only for compatibility with SMDG proposal. It will not be processed by JUL system. | | | |
| | AAS | Air flow Only for compatibility with SMDG proposal. It will not be processed by JUL system. | | | |
| | AAW | Gross volume Only for compatibility with SMDG proposal. It will not be processed by JUL system. | | | |
| | ABJ | Volume Only for compatibility with SMDG proposal. It will not be processed by JUL system. | | | |
| | AET | Transport equipment gross weight | | | |
| | CD | Carbondioxide Carbondioxide setting in percentage. Only for compatibility with SMDG proposal. It will not be processed by JUL system. | | | |
| | G | Gross weight Usage complemented in local document if mentioned in that document. It will be treated like 'AET'. | | | |
| | MW | Maximum weight Only for compatibility with SMDG proposal. It will not be processed by JUL system. | | | |
| | T | Tare weight Use in case of transport equipment (EQD:8053 <> 'BB'). | | | |
| | VGM | Transport equipment verified gross mass (weight) | | | |
| | ZO | Oxygen Only for compatibility with SMDG proposal. It will not be processed by JUL system. | | | |
| | 6321 | Measurement significance code | C | an..3 | X |
| | 6155 | Non-discrete measurement name code | C | an..17 | X |
| | 6154 | Non-discrete measurement name | C | an..70 | X |
| C174 | | VALUE/RANGE | C | 1 | R |
| | | Measurement value and relevant minimum and maximum values of the measurement range. | | | |
| | 6411 | Measurement unit code | C | an..8 | R |
| | | Code specifying the unit of measurement. | | | |
| | FTQ | Cubic Feet Only for compatibility with SMDG proposal. It will not be processed by JUL system. | | | |
| | KGM | Kilograms | | | |

| | | | | | |
|------|---|--|----------|----------------|----------|
| | LBR | Pounds | | | |
| | | Only for compatibility with SMDG proposal. It will not be processed by JUL system. | | | |
| | MTQ | Cubic Meters | | | |
| | | Only for compatibility with SMDG proposal. It will not be processed by JUL system. | | | |
| | PCT | Percentage | | | |
| | | Only for compatibility with SMDG proposal. It will not be processed by JUL system. | | | |
| 6314 | Measure | | C | an..18 | R |
| | To specify the value of a measurement. | | | | |
| | If the value is not available, put '0'. | | | | |
| 6162 | Range minimum quantity | | C | n..18 | X |
| 6152 | Range maximum quantity | | C | n..18 | X |
| 6432 | Significant digits quantity | | C | n..2 | X |
| 7383 | SURFACE OR LAYER CODE | | C | 1 an..3 | X |

Segment: **DIM** Dimensions
Position: 00630
Group: Segment Group 13 (Equipment Details) Mandatory
Level: 2
Usage: Conditional (Optional)
Max Use: 5
Purpose: - off-standard dimensions, general - off-standard dimensions, front - off-standard dimensions, rear - off-standard dimensions, right - off-standard dimensions, left - off-standard dimensions, height - external equipment dimensions - dimensions equipment door - net dimensions

Dependency Notes:**Semantic Notes:****Comments:****Notes:**

Example: Transport equipment has off-standard height by additional 23 cm.

DIM+13+CMT:::23'

Example: Transport equipment has extra 40 cm in length, 8 cm in width, and 9 cm in height.

DIM+9+CMT:40:8:9'

Data Element Summary

| Data Element | Component Element | Name | Base Attributes | | | User Attributes |
|---------------------|--------------------------|---|------------------------|----------|--------------|------------------------|
| 6145 | | DIMENSION TYPE CODE QUALIFIER | M | 1 | an..3 | M |
| | | Code qualifying the type of the dimension. | | | | |
| | | 1 Gross dimensions | | | | |
| | | To be used for general cargo shipment only (EQD:8053 = 'BB'). | | | | |
| | | 5 Off-standard dimension front | | | | |
| | | 6 Off-standard dimension back | | | | |
| | | 7 Off-standard dimension right | | | | |
| | | 8 Off-standard dimension left | | | | |
| | | 9 Off-standard dimension general | | | | |
| | | 10 External equipment dimension | | | | |
| | | To be used for non-ISO equipment only. | | | | |
| | | 13 Off-standard dimensions height | | | | |
| C211 | | DIMENSIONS | M | 1 | | M |
| | | Specification of the dimensions of a transportable unit. | | | | |
| | 6411 | Measurement unit code | M | | an..8 | M |
| | | Code specifying the unit of measurement. | | | | |
| | | CMT Centimetres | | | | |

| | INH | Inches | | | |
|-------------|---|--------|----------|--------------|----------|
| 6168 | Length measure | | C | n..15 | O |
| | To specify the value of a length dimension. | | | | |
| | Overall length if DE:6145 in {'1', '10'}. | | | | |
| | Overlength if DE:6145 in {'5', '6'}. | | | | |
| 6140 | Width measure | | C | n..15 | O |
| | To specify the value of a width dimension. | | | | |
| | Overall width if DE:6145 in {'1', '10'}. | | | | |
| | Overwidth if DE:6145 in {'7', '8'}. | | | | |
| 6008 | Height measure | | C | n..15 | O |
| | To specify the value of a height dimension. | | | | |
| | Overall height if DE:6145 in {'1', '10'}. | | | | |
| | Overheight if DE:6145 = '13'. | | | | |
| 6182 | Diameter measure | | C | n..15 | X |

Group: **TMP** Segment Group 14: Temperature
Position: 00640
Group: Segment Group 13 (Equipment Details) Mandatory
Level: 2
Usage: Conditional (Optional)
Max Use: 1
Purpose: A segment group to identify transport related temperature settings
Notes: Not used in case of general cargo shipment (EQD:8053 = 'BB').

This segment group is used to provide information on temperature that a transport equipment must be set during its movement through the port. This is a typical case with reefer containers.

Segment Summary

| | Pos. | Seg. | | Req. | Max. | Group: |
|---|-------------------|------------------|--------------------|--------------------|-------------------|----------------------|
| | <u>No.</u> | <u>ID</u> | <u>Name</u> | <u>Des.</u> | <u>Use</u> | <u>Repeat</u> |
| M | 00650 | TMP | Temperature | M | 1 | |
| O | 00660 | RNG | Range Details | C | 1 | |

Segment: **TMP** Temperature
Position: 00650 (Trigger Segment)
Group: Segment Group 14 (Temperature) Conditional (Optional)
Level: 2
Usage: Mandatory
Max Use: 1
Purpose: A segment to specify the transport temperature setting of a container.
Dependency Notes:
Semantic Notes:
Comments:
Notes: Example: Equipment inside temperature must be 5° C

TMP+2+5:CEL'

Data Element Summary

| <u>Data Element</u> | <u>Component Element</u> | <u>Name</u> | <u>Base Attributes</u> | <u>User Attributes</u> |
|---------------------|--------------------------|--|------------------------|------------------------|
| 6245 | | TEMPERATURE TYPE CODE QUALIFIER | M 1 an..3 | M |
| | | Code qualifying the type of a temperature. | | |
| | | Usage complemented in local document if mentioned in that document. | | |
| | | 2 Transport temperature | | |
| | | 3 Cargo operating temperature | | |
| | | 4 Transport emergency temperature | | |
| | | 5 Transport control temperature | | |
| C239 | | TEMPERATURE SETTING | C 1 | R |
| | | The temperature under which the goods are (to be) stored or shipped. | | |
| | 6246 | Temperature degree | C n..15 | R |
| | | To specify the value of a temperature. | | |
| | 6411 | Measurement unit code | C an..8 | R |
| | | Code specifying the unit of measurement. | | |
| | | CEL Celsius | | |
| | | FAH Farenheight | | |

Segment: **RNG** Range Details
Position: 00660
Group: Segment Group 14 (Temperature) Conditional (Optional)
Level: 3
Usage: Conditional (Optional)
Max Use: 1
Purpose: A segment to specify the transport temperature range or the pre-tripping range of a container.

Dependency Notes:**Semantic Notes:****Comments:****Notes:**

Only to be used when a temperature range is to be specified. When a set temperature is to be specified, the TMP segment must be used.

Example: Temperature should not be lower than 2° C or higher than 7° C.

RNG+5+CEL:2:7'

Data Element Summary

| <u>Data Element</u> | <u>Component Element</u> | <u>Name</u> | <u>Base Attributes</u> | | | <u>User Attributes</u> |
|---------------------|--------------------------|---|------------------------|----------|--------------|------------------------|
| 6167 | | RANGE TYPE CODE QUALIFIER Code qualifying a type of range. | M | 1 | an..3 | M |
| | 5 | Temperature range | | | | |
| C280 | | RANGE Range minimum and maximum limits. | C | 1 | | R |
| | 6411 | Measurement unit code Code specifying the unit of measurement. | M | | an..8 | M |
| | 6162 | Range minimum quantity To specify the minimum value of a range. | C | | n..18 | R |
| | 6152 | Range maximum quantity To specify the maximum value of a range. | C | | n..18 | R |

Segment: **SEL** Seal Number
Position: 00670
Group: Segment Group 13 (Equipment Details) Mandatory
Level: 2
Usage: Conditional (Dependent)
Max Use: 7
Purpose: A segment to identify seal and seal issuer associated with the container, such as shipper, consolidator, carrier (sea) and Customs.

Dependency Notes:**Semantic Notes:****Comments:**

Notes: Segment must be used when the transport equipment is full (EQD:8169 = '5').

Not applicable to general cargo shipment (EQD:8053 = 'BB').

Example: Carrier seal 6629290

SEL+6629290+CA'

Example: Mechanical seal 591753 in right condition

SEL+591753++1++1'

Example: Illegible seal from unknown origin

SEL+ILLEGIBLE+AB'

Data Element Summary

| Data Element | Component Element Name | Base Attributes | User Attributes |
|---------------------|--|------------------------|------------------------|
| 9308 | TRANSPORT UNIT SEAL IDENTIFIER | C 1 an..35 | O |
| | The identification number of a seal affixed to a transport unit. | | |
| C215 | SEAL ISSUER | C 1 | O |
| | Identification of the issuer of a seal on equipment either by code or by name. | | |
| | 9303 Sealing party name code | C an..3 | O |
| | Code specifying the name of the sealing party. | | |
| | Refer to D.16A Data Element Dictionary for acceptable code values. | | |
| | 1131 Code list identification code | C an..17 | X |
| | 3055 Code list responsible agency code | C an..3 | X |
| | 9302 Sealing party name | C an..35 | O |
| | Name of the sealing party. | | |
| | Only for compatibility with SMDG proposal. It will not be processed by JUL system. | | |
| 4517 | SEAL CONDITION CODE | C 1 an..3 | O |

| | | | | |
|-------------|---|--------------------|------------------|----------|
| | Code specifying the condition of a seal. | | | |
| | 1 | In right condition | | |
| | 2 | Damaged | | |
| C208 | IDENTITY NUMBER RANGE | | C 1 | X |
| | Goods item identification numbers, start and end of consecutively numbered range. | | | |
| 7402 | Object identifier | | M an..35 | X |
| | Code specifying the unique identity of an object. | | | |
| 7402 | Object identifier | | C an..35 | X |
| | Code specifying the unique identity of an object. | | | |
| 4525 | SEAL TYPE CODE | | C 1 an..3 | O |
| | To specify a type of seal. | | | |
| | Refer to D.16A Data Element Dictionary for acceptable code values. | | | |

Segment: **FTX** Free Text
Position: 00680
Group: Segment Group 13 (Equipment Details) Mandatory
Level: 2
Usage: Conditional (Dependent)
Max Use: 6
Purpose: A segment to specify processable supplementary information associated with the container, such as: - loading instructions (seagoing vessel) - special instructions (related to inland transport) - container order information (conditions to be checked) - remarks

Dependency Notes:**Semantic Notes:****Comments:**

Notes: Usage complemented in local document if mentioned in that document.

This segment is required in case of general cargo shipment (EQD:8053 = 'BB') to inform the number and type of volumes, according to UN/ECE Recommendation 21 - Codes for Types of Cargo, Packages and Packaging Materials according to Annex V and Annex VI (Doc. Ref. TRADE/CEFACT/2002/), being moved. If it is a bulk cargo (solid or liquid) then the number of volumes is 1 (one). Additionally, it is also used to report the nature of cargo according to Annex II - Eurostat Maritime Transport Directive.

Otherwise this segment is to report complementary information, compulsory or not.

Example: The general cargo shipment is made of 8 barrels.

FTX+PAC+++8:BA'

Example: Solid bulk, agricultural products

FTX+ACB+++23'

Data Element Summary

| Data Element | Component Element Name | Base Attributes | User Attributes |
|---------------------|--|------------------------|------------------------|
| 4451 | TEXT SUBJECT CODE QUALIFIER | M 1 an..3 | M |
| | Code qualifying the subject of the text. | | |
| | AAA Goods item description | | |
| | AAI General information | | |
| | ABS Additional conditions | | |
| | To be used for VGM related information. | | |
| | ACB Additional information | | |
| | Required if EQD:8053 = 'BB'. Not needed otherwise. | | |
| | ACF Additional attribute information | | |
| | Only for compatibility with SMDG proposal. It will not be processed by JUL system. | | |

| | | | | | |
|------|--|--|----------|----------------|----------|
| | ADZ | CSC (Container Safety Convention) plate information Only for compatibility with SMDG proposal. It will not be processed by JUL system. | | | |
| | CUS | Customs declaration information Usage complemented in local document if mentioned in that document. Only applied to transport equipment (EQD:8053 <> 'BB'). | | | |
| | DAR | Damage remarks Only for compatibility with SMDG proposal. It will not be processed by JUL system. | | | |
| | HAN | Consignment handling instruction | | | |
| | INV | Invoice instruction Only for compatibility with SMDG proposal. It will not be processed by JUL system. | | | |
| | LOI | Loading instruction Only for compatibility with SMDG proposal. It will not be processed by JUL system. | | | |
| | OSI | Other service information Only for compatibility with SMDG proposal. It will not be processed by JUL system. | | | |
| | PAC | Packing/marketing information In case of general cargo shipment (EQD:8053 = 'BB') the occurrence of the segment with this qualifier is to provide information on the number of volumes. | | | |
| | SIN | Special instructions Only for compatibility with SMDG proposal. It will not be processed by JUL system. | | | |
| 4453 | FREE TEXT FUNCTION CODE | | C | 1 an..3 | X |
| C107 | TEXT REFERENCE | | C | 1 | O |
| | | Coded reference to a standard text and its source. | | | |
| 4441 | Free text description code | | M | an..17 | M |
| | | Code specifying free form text. | | | |
| | DRF | Reference to weighing equipment certificate (SM1) or method certification (SM2) | | | |
| | SM1 | SOLAS Method 1 | | | |
| | SM2 | SOLAS Method 2 | | | |
| 1131 | Code list identification code | | C | an..17 | O |
| | | Code identifying a user or association maintained code list. Usage complemented in local document if mentioned in that document. | | | |
| | ZZZ | Mutually defined | | | |
| 3055 | Code list responsible agency code | | C | an..3 | O |
| | | Code specifying the agency responsible for a code list. Only for compatibility with SMDG proposal. It will not be processed by JUL system. | | | |

| | | | | |
|-------------|---|----------|----------------|----------|
| | Refer to D.16A Data Element Dictionary for acceptable code values. | | | |
| C108 | TEXT LITERAL | C | 1 | R |
| | Free text; one to five lines. | | | |
| 4440 | Free text | M | an..512 | M |
| | Free form text. | | | |
| | If DE:4441 in {'SM1', 'SM2'} this element should contain the reference of the certificate for ascertainment of VGM according to method 1 or 2. | | | |
| | If DE:4441 = 'DRF' this element should contain the reference to weighting equipment certificate (SM1) or method certification (SM2). | | | |
| | If DE:4451 = 'PAC' this element should contain the number of volumes of a general cargo shipment. | | | |
| | If DE:4451 = 'CUS' then this element should have one of the following values: 'Y' - the transport equipment is to be placed under Customs Export Warehouse. 'N' - the transport equipment is not to be placed under Customs Export Warehouse. | | | |
| 4440 | Free text | C | an..512 | O |
| | Free form text. | | | |
| | If DE:4451 = 'PAC' this element will contain the type of volumes according to UN/ECE Recommendation 21 - Code for Types of Cargo, Packages and Packing Materials, Annex V and Annex VI. | | | |
| 4440 | Free text | C | an..512 | O |
| | Free form text. | | | |
| 4440 | Free text | C | an..512 | O |
| | Free form text. | | | |
| 4440 | Free text | C | an..512 | O |
| | Free form text. | | | |
| 3453 | LANGUAGE NAME CODE | C | 1 an..3 | X |
| 4447 | FREE TEXT FORMAT CODE | C | 1 an..3 | X |

Group: **DGS** Segment Group 15: Dangerous Goods
Position: 00700
Group: Segment Group 13 (Equipment Details) Mandatory
Level: 2
Usage: Conditional (Optional)
Max Use: 9
Purpose: A segment group to identify dangerous goods.
Notes: In this version, no detailed information is needed. The group is just used to declare the presence of dangerous goods.
 However the data provided will be kept.

Segment Summary

| | Pos. | Seg. | | Req. | Max. | Group: |
|---|-------------|-------------|---------------------------------------|-------------|-------------|---------------|
| | No. | ID | Name | Des. | Use | Repeat |
| M | 00710 | DGS | Dangerous Goods | M | 1 | |
| O | 00720 | FTX | Free Text | C | 9 | |
| | 00740 | | Segment Group 16: Contact Information | C | | 9 |

Segment: **DGS** Dangerous Goods
Position: 00710 (Trigger Segment)
Group: Segment Group 15 (Dangerous Goods) Conditional (Optional)
Level: 2
Usage: Mandatory
Max Use: 1
Purpose: A segment to specify dangerous goods.
Dependency Notes:
Semantic Notes:
Comments:

Data Element Summary

| <u>Data Element</u> | <u>Component Element</u> | <u>Name</u> | <u>Base Attributes</u> | <u>User Attributes</u> |
|---------------------|--------------------------|---|------------------------|------------------------|
| 8273 | | DANGEROUS GOODS REGULATIONS CODE | C 1 an..3 | R |
| | | Code specifying a dangerous goods regulation. | | |
| | | ADR European agreement on the international carriage of dangerous goods on road (ADR) <i>Only for compatibility with SMDG proposal. It will not be processed by JUL system.</i> | | |
| | | ANR ADNR, Autorisation de transport de matieres Dangereuses pour la Navigation sur le Rhin <i>Only for compatibility with SMDG proposal. It will not be processed by JUL system.</i> | | |
| | | CFR US, 49 Code of federal regulations <i>Only for compatibility with SMDG proposal. It will not be processed by JUL system.</i> | | |
| | | IMD IMO IMDG code | | |
| | | RID Railroad dangerous goods book (RID) <i>Only for compatibility with SMDG proposal. It will not be processed by JUL system.</i> | | |
| C205 | | HAZARD CODE | C 1 | R |
| | | The identification of the dangerous goods in code. | | |
| | 8351 | Hazard identification code | M an..7 | M |
| | | Code identifying a hazard. | | |
| | 8078 | Additional hazard classification identifier | C an..7 | O |
| | | To identify an additional hazard classification. <i>Only for compatibility with SMDG proposal. It will not be processed by JUL system.</i> | | |
| | 8092 | Hazard code version identifier | C an..10 | O |
| | | To identify the version number of a hazard code. <i>Only for compatibility with SMDG proposal. It will not be processed by JUL system.</i> | | |
| C234 | | UNDG INFORMATION | C 1 | O |

| | | | | | |
|------|------|--|---|----------|---|
| | | Information on dangerous goods, taken from the United Nations Dangerous Goods classification. | | | |
| | 7124 | United Nations Dangerous Goods (UNDG) identifier | C | n4 | O |
| | | The unique serial number assigned within the United Nations to substances and articles contained in a list of the dangerous goods most commonly carried. | | | |
| | | UNDG number | | | |
| | 7088 | Dangerous goods flashpoint description | C | an..8 | X |
| C223 | | DANGEROUS GOODS SHIPMENT FLASHPOINT | C | 1 | O |
| | | Temperature at which a vapor can be ignited as per ISO 1523/73. Only for compatibility with SMDG proposal. It will not be processed by JUL system. | | | |
| | 7106 | Shipment flashpoint degree | C | n3 | O |
| | | To specify the value of the flashpoint of a shipment. | | | |
| | 6411 | Measurement unit code | C | an..8 | O |
| | | Code specifying the unit of measurement. | | | |
| 8339 | | PACKAGING DANGER LEVEL CODE | C | 1 an..3 | O |
| | | Code specifying the level of danger for which the packaging must cater. | | | |
| | | 1 Great danger | | | |
| | | 2 Medium danger | | | |
| | | 3 Minor danger | | | |
| 8364 | | EMERGENCY PROCEDURE FOR SHIPS IDENTIFIER | C | 1 an..8 | O |
| | | To identify the emergency procedure number for ships transporting dangerous goods. Synonym: EMS Number. Only for compatibility with SMDG proposal. It will not be processed by JUL system. | | | |
| 8410 | | HAZARD MEDICAL FIRST AID GUIDE IDENTIFIER | C | 1 an..4 | O |
| | | To identify a Medical First Aid Guide (MFAG) for hazardous goods. Only for compatibility with SMDG proposal. It will not be processed by JUL system. | | | |
| 8126 | | TRANSPORT EMERGENCY CARD IDENTIFIER | C | 1 an..10 | O |
| | | To identify a transport emergency (TREM) card. Only for compatibility with SMDG proposal. It will not be processed by JUL system. | | | |
| C235 | | HAZARD IDENTIFICATION PLACARD DETAILS | C | 1 | O |
| | | These numbers appear on the hazard identification placard required on the means of transport. Only for compatibility with SMDG proposal. It will not be processed by JUL system. | | | |

| | | | | |
|------|---|---|---------|---|
| 8158 | Orange hazard placard upper part identifier | C | an..4 | O |
| | To specify the identity number for the upper part of the orange hazard placard required on the means of transport. | | | |
| 8186 | Orange hazard placard lower part identifier | C | an4 | O |
| | To specify the identity number for the lower part of the orange hazard placard required on the means of transport. | | | |
| C236 | DANGEROUS GOODS LABEL | C | 1 | O |
| | Markings identifying the type of hazardous goods and similar information. Only for compatibility with SMDG proposal. It will not be processed by JUL system. | | | |
| 8246 | Dangerous goods marking identifier | C | an..4 | O |
| | To identify the marking of dangerous goods. | | | |
| 8246 | Dangerous goods marking identifier | C | an..4 | O |
| | To identify the marking of dangerous goods. | | | |
| 8246 | Dangerous goods marking identifier | C | an..4 | O |
| | To identify the marking of dangerous goods. | | | |
| 8246 | Dangerous goods marking identifier | C | an..4 | O |
| | To identify the marking of dangerous goods. | | | |
| 8255 | PACKING INSTRUCTION TYPE CODE | C | 1 an..3 | X |
| 8179 | TRANSPORT MEANS DESCRIPTION CODE | C | 1 an..8 | X |
| 8211 | HAZARDOUS CARGO TRANSPORT AUTHORITY CODE | C | 1 an..3 | X |
| C289 | TUNNEL RESTRICTION | C | 1 | X |
| | To specify a restriction for transport through tunnels. | | | |
| 8461 | Tunnel Restriction Code | C | an..6 | X |
| | A code indicating a restriction for transport through tunnels. | | | |
| 1131 | Code list identification code | C | an..17 | X |
| | Code identifying a user or association maintained code list. | | | |
| 3055 | Code list responsible agency code | C | an..3 | X |
| | Code specifying the agency responsible for a code list. | | | |

Segment: **FTX** Free Text
Position: 00720
Group: Segment Group 15 (Dangerous Goods) Conditional (Optional)
Level: 3
Usage: Conditional (Optional)
Max Use: 9
Purpose: A segment to specify supplementary details regarding the dangerous goods such as the technical name of the dangerous goods etc.

Dependency Notes:**Semantic Notes:****Comments:**

Notes: Only for compatibility with SMDG proposal. It will not be processed by JUL system.

Data Element Summary

| Data Element | Component Element | Name | Base Attributes | | User Attributes |
|---------------------|--------------------------|---|------------------------|----------------|------------------------|
| 4451 | | TEXT SUBJECT CODE QUALIFIER Code qualifying the subject of the text. Refer to D.16A Data Element Dictionary for acceptable code values. | M | 1 an..3 | M |
| 4453 | | FREE TEXT FUNCTION CODE Code specifying the function of free text. Refer to D.16A Data Element Dictionary for acceptable code values. | C | 1 an..3 | O |
| C107 | | TEXT REFERENCE Coded reference to a standard text and its source. | C | 1 | O |
| | 4441 | Free text description code Code specifying free form text. | M | an..17 | M |
| | 1131 | Code list identification code Code identifying a user or association maintained code list. | C | an..17 | O |
| | 3055 | Code list responsible agency code Code specifying the agency responsible for a code list. Refer to D.16A Data Element Dictionary for acceptable code values. | C | an..3 | O |
| C108 | | TEXT LITERAL Free text; one to five lines. | C | 1 | O |
| | 4440 | Free text Free form text. | M | an..512 | M |
| | 4440 | Free text Free form text. | C | an..512 | O |
| | 4440 | Free text Free form text. | C | an..512 | O |
| | 4440 | Free text Free form text. | C | an..512 | O |

| | | | | |
|-------------|--|----------|----------------|----------|
| 4440 | Free text Free form text. | C | an..512 | O |
| 3453 | LANGUAGE NAME CODE Code specifying the language name. | C | 1 an..3 | O |
| 4447 | FREE TEXT FORMAT CODE Code specifying the format of free text. Refer to D.16A Data Element Dictionary for acceptable code values. | C | 1 an..3 | O |

Group: **CTA** Segment Group 16: Contact Information
Position: 00740
Group: Segment Group 15 (Dangerous Goods) Conditional (Optional)
Level: 3
Usage: Conditional (Optional)
Max Use: 9
Purpose: A segment group to specify contact information including communication details regarding the dangerous goods.
Notes: Only for compatibility with SMDG proposal. It will not be processed by JUL system.

Segment Summary

| | Pos. | Seg. | | Req. | Max. | Group: |
|---|-------------------|------------------|-----------------------|--------------------|-------------------|----------------------|
| | <u>No.</u> | <u>ID</u> | <u>Name</u> | <u>Des.</u> | <u>Use</u> | <u>Repeat</u> |
| M | 00750 | CTA | Contact Information | M | 1 | |
| O | 00760 | COM | Communication Contact | C | 9 | |

Segment: **CTA Contact Information**
Position: 00750 (Trigger Segment)
Group: Segment Group 16 (Contact Information) Conditional (Optional)
Level: 3
Usage: Mandatory
Max Use: 1
Purpose: A segment to identify a person or department to be contacted regarding the dangerous goods.

Dependency Notes:**Semantic Notes:****Comments:**

Notes: Only for compatibility with SMDG proposal. It will not be processed by JUL system.

Data Element Summary

| Data Element | Component Element | Name | Base Attributes | User Attributes |
|---------------------|--------------------------|--|------------------------|------------------------|
| 3139 | | CONTACT FUNCTION CODE Code specifying the function of a contact (e.g. department or person). Refer to D.16A Data Element Dictionary for acceptable code values. | C 1 an..3 | O |
| C056 | | CONTACT DETAILS Code and/or name of a contact such as a department or employee. Code preferred. | C 1 | O |
| | 3413 | Contact identifier To identify a contact, such as a department or employee. | C an..17 | O |
| | 3412 | Contact name Name of a contact, such as a department or employee. | C an..256 | O |

Segment: **COM** **Communication Contact**
Position: 00760
Group: Segment Group 16 (Contact Information) Conditional (Optional)
Level: 4
Usage: Conditional (Optional)
Max Use: 9
Purpose: A segment to specify communication details of the contact specified in the CTA segment.

Dependency Notes:**Semantic Notes:****Comments:**

Notes: Only for compatibility with SMDG proposal. It will not be processed by JUL system.

Data Element Summary

| Data Element | Component Element | Name | Base Attributes | | User Attributes |
|---------------------|--------------------------|--|------------------------|----------------|------------------------|
| C076 | | COMMUNICATION CONTACT | M | 3 | M |
| | | Communication number of a department or employee in a specified channel. | | | |
| | 3148 | Communication address identifier | M | an..512 | M |
| | | To identify a communication address. | | | |
| | 3155 | Communication means type code | M | an..3 | M |
| | | Code specifying the type of communication address. | | | |
| | | Refer to D.16A Data Element Dictionary for acceptable code values. | | | |

Segment: **EQA** Attached Equipment
Position: 00790
Group: Segment Group 13 (Equipment Details) Mandatory
Level: 2
Usage: Conditional (Optional)
Max Use: 1
Purpose: A segment to identify related container and means of transport details (rail), such as:
 - rail car (to relate to the 'rail-car'-qualified EQD-group)

Dependency Notes:**Semantic Notes:****Comments:**

Notes: Only for compatibility with SMDG proposal. It will not be processed by JUL system.

Data Element Summary

| <u>Data Element</u> | <u>Component Element</u> | <u>Name</u> | <u>Base Attributes</u> | | | <u>User Attributes</u> |
|---------------------|--------------------------|---|------------------------|---|--------|------------------------|
| 8053 | | EQUIPMENT TYPE CODE QUALIFIER Code qualifying a type of equipment. Refer to D.16A Data Element Dictionary for acceptable code values. | M | 1 | an..3 | M |
| C237 | | EQUIPMENT IDENTIFICATION Marks (letters/numbers) identifying equipment. | C | 1 | | O |
| | 8260 | Equipment identifier To identify equipment. | C | | an..17 | O |
| | 1131 | Code list identification code Code identifying a user or association maintained code list. | C | | an..17 | O |
| | 3055 | Code list responsible agency code Code specifying the agency responsible for a code list. Refer to D.16A Data Element Dictionary for acceptable code values. | C | | an..3 | O |
| | 3207 | Country identifier Identification of the name of the country or other geographical entity as defined in ISO 3166-1 and UN/ECE Recommendation 3. | C | | an..3 | O |

Segment: **HAN** Handling Instructions
Position: 00810
Group: Segment Group 13 (Equipment Details) Mandatory
Level: 2
Usage: Conditional (Optional)
Max Use: 3
Purpose: A segment to specify handling instructions related to the container equipment.

Dependency Notes:**Semantic Notes:****Comments:**

Notes: Usage complemented in local document if mentioned in that document.

This segment is used to specify additional requirements related with the handling of the transport equipment. The instructions are given by the code in DE:4079. As several instructions may be given, the segment can occur several times.

Example: Equipment will be unstuffed on quay.

HAN+UQ'

Data Element Summary

| <u>Data Element</u> | <u>Component Element</u> | <u>Name</u> | <u>Base Attributes</u> | | <u>User Attributes</u> |
|---------------------|--------------------------|---|------------------------|---------|------------------------|
| C524 | | HANDLING INSTRUCTIONS | C | 1 | R |
| | | Instruction for the handling of goods, products or articles in shipment, storage etc. | | | |
| | 4079 | Handling instruction description code | C | an..3 | O |
| | | Code specifying a handling instruction. | | | |
| | | Usage complemented in local document if mentioned in that document. | | | |
| | | Refer to D.16A Data Element Dictionary for acceptable code values. | | | |
| | 1131 | Code list identification code | C | an..17 | O |
| | | Code identifying a user or association maintained code list. | | | |
| | | Only for compatibility with SMDG proposal. It will not be processed by JUL system. | | | |
| | 3055 | Code list responsible agency code | C | an..3 | O |
| | | Code specifying the agency responsible for a code list. | | | |
| | | Only for compatibility with SMDG proposal. It will not be processed by JUL system. | | | |
| | | Refer to D.16A Data Element Dictionary for acceptable code values. | | | |
| | 4078 | Handling instruction description | C | an..512 | O |
| | | Free form description of a handling instruction. | | | |
| | | Only for compatibility with SMDG proposal. It will not be processed by JUL system. | | | |
| C218 | | HAZARDOUS MATERIAL | C | 1 | X |
| | | To specify a hazardous material. | | | |

| | | | | |
|-------------|--|----------|---------------|----------|
| 7419 | Hazardous material category name code | C | an..7 | X |
| | Code specifying a kind of hazard for a material. | | | |
| 1131 | Code list identification code | C | an..17 | X |
| | Code identifying a user or association maintained code list. | | | |
| 3055 | Code list responsible agency code | C | an..3 | X |
| | Code specifying the agency responsible for a code list. | | | |
| 7418 | Hazardous material category name | C | an..35 | X |
| | Name of a kind of hazard for a material. | | | |

| | |
|------------------|---|
| Group: | DAM Segment Group 17: Damage |
| Position: | 00820 |
| Group: | Segment Group 13 (Equipment Details) Mandatory |
| Level: | 2 |
| Usage: | Conditional (Optional) |
| Max Use: | 9 |
| Purpose: | A group of segments to specify damage details related to the equipment. |
| Notes: | This group is used to declare detected damages on the transport equipment or on general cargo shipment. |
| | In the case of transport equipment (EQD:8053 <> 'BB'), it is advised the usage of ISO 9897 Annex D to inform on the type of damage. |
| | In the case of general cargo shipment (EQD:8053 = 'BB') the purpose is to inform if a damage was detected on any volumes moved. For exemple, a general cargo shipment is made of 10 aluminium drums, and two are damage. This group allows to declare this situation. |

Segment Summary

| | Pos. | Seg. | | Req. | Max. | Group: |
|---|-------------------|------------------|--------------------|--------------------|-------------------|----------------------|
| | <u>No.</u> | <u>ID</u> | <u>Name</u> | <u>Des.</u> | <u>Use</u> | <u>Repeat</u> |
| M | 00830 | DAM | Damage | M | 1 | |

Segment: **DAM** Damage
Position: 00830 (Trigger Segment)
Group: Segment Group 17 (Damage) Conditional (Optional)
Level: 2
Usage: Mandatory
Max Use: 1
Purpose: A segment to specify equipment damages, such as the point of the damage on the equipment, and the type of damage.

Dependency Notes:**Semantic Notes:****Comments:**

Notes: Example: Equipment is dented and holed on the right side down to the front.

DAM+1+DH:::DENTED AND HOLED+:::RIGHT SIDE DOWN FRONT'

Example: General cargo shipment consists of 10 roll cages. One has a broken wheel.

DAM+2+:::1 CAGE W/ 1 BROKEN WHEEL'

Data Element Summary

| <u>Data Element</u> | <u>Component Element</u> | <u>Name</u> | <u>Base Attributes</u> | | <u>User Attributes</u> |
|---------------------|--------------------------|---|------------------------|---------|------------------------|
| 7493 | | DAMAGE DETAILS CODE QUALIFIER | M | 1 an..3 | M |
| | | Code qualifying the damage details. Refer to D.16A Data Element Dictionary for acceptable code values. | | | |
| C821 | | TYPE OF DAMAGE | C | 1 | O |
| | | To specify the type of damage to an object. | | | |
| | 7501 | Damage type description code | C | an..3 | O |
| | | Code specifying the type of damage to an object. ISO 9897, Annex D - Damage types, CEDEX Code. Not applicable to general cargo shipment (EQD:8053 <> 'BB'). | | | |
| | 1131 | Code list identification code | C | an..17 | X |
| | 3055 | Code list responsible agency code | C | an..3 | X |
| | 7500 | Damage type description | C | an..35 | R |
| | | Free form description of the type of damage to an object. Damage type (free text). | | | |
| C822 | | DAMAGE AREA | C | 1 | O |
| | | To specify where the damage is on an object. | | | |
| | 7503 | Damage area description code | C | an..4 | X |
| | 1131 | Code list identification code | C | an..17 | X |
| | 3055 | Code list responsible agency code | C | an..3 | X |
| | 7502 | Damage area description | C | an..35 | R |

| | | | | | |
|-------------|-------------|--|----------|---------------|----------|
| | | Free form description of where the damage is on an object. | | | |
| C825 | | DAMAGE SEVERITY | C | 1 | X |
| | | To specify the severity of damage to an object. | | | |
| | 7509 | Damage severity description code | C | an..3 | X |
| | | Code specifying the severity of damage. | | | |
| | 1131 | Code list identification code | C | an..17 | X |
| | | Code identifying a user or association maintained code list. | | | |
| | 3055 | Code list responsible agency code | C | an..3 | X |
| | | Code specifying the agency responsible for a code list. | | | |
| | 7508 | Damage severity description | C | an..35 | X |
| | | Free form description of the severity of damage. | | | |
| C826 | | ACTION | C | 1 | X |
| | | To indicate an action which has been taken or is to be taken (e.g. in relation to a certain object). | | | |
| | 1229 | Action code | C | an..3 | X |
| | | Code specifying the action to be taken or already taken. | | | |
| | 1131 | Code list identification code | C | an..17 | X |
| | | Code identifying a user or association maintained code list. | | | |
| | 3055 | Code list responsible agency code | C | an..3 | X |
| | | Code specifying the agency responsible for a code list. | | | |
| | 1228 | Action description | C | an..35 | X |
| | | Free form description of the action to be taken or already taken. | | | |

Group: **TDT** Segment Group 18: Transport Information
Position: 00850
Group: Segment Group 13 (Equipment Details) Mandatory
Level: 2
Usage: Conditional (Optional)
Max Use: 2
Purpose: A group of segments to indicate information related to the pre- or on-carriage transport stage of the equipment.
Notes: Usage complemented in local document if mentioned in that document.

In some situations, for purpose planning it is useful to make a reference to a future voyage or call of a means of transport. This group fills this requirement allowing the reference to on or two ahead voyages or calls in relation to the call identified in SG2.

Segment Summary

| | Pos. | Seg. | | Req. | Max. | Group: |
|---|-------------|-------------|---|-------------|-------------|---------------|
| | No. | ID | Name | Des. | Use | Repeat |
| M | 00860 | TDT | Transport Information | M | 1 | |
| O | 00870 | DTM | Date/Time/Period | C | 9 | |
| O | 00880 | RFF | Reference | C | 9 | |
| | 00890 | | Segment Group 19: Place/Location Identification | C | | 9 |

Segment: **TDT** **Transport Information**
Position: 00860 (Trigger Segment)
Group: Segment Group 18 (Transport Information) Conditional (Optional)
Level: 2
Usage: Mandatory
Max Use: 1
Purpose: A segment to specify pre- or on-carriage transport details, such as: * pre- or on-carriage transport * second pre- or on-carriage transport

Dependency Notes:**Semantic Notes:****Comments:**

Notes: Usage complemented in local document if mentioned in that document.

Example: On-carriage transport, maritime, voyage number NB528, vessel name Portlink Caravel IMO 8913057.

TDT+30+NB528+1+++++8913057:146:54:PORTLINK CARAVEL:AG'

Data Element Summary

| <u>Data Element</u> | <u>Component Element</u> | <u>Name</u> | <u>Base Attributes</u> | | <u>User Attributes</u> |
|---------------------|--------------------------|--|------------------------|----------|------------------------|
| 8051 | | TRANSPORT STAGE CODE QUALIFIER | M | 1 an..3 | M |
| | | Code qualifying a specific stage of transport. | | | |
| | | 1 Inland transport | | | |
| | | 10 Pre-carriage transport | | | |
| | | <i>Only for compatibility with SMDG proposal. It will not be processed by JUL system.</i> | | | |
| | | 28 Second on-carriage transport | | | |
| | | 30 On-carriage transport | | | |
| 8028 | | MEANS OF TRANSPORT JOURNEY IDENTIFIER | C | 1 an..17 | O |
| | | To identify a journey of a means of transport. | | | |
| | | Usage complemented in local document if mentioned in that document. | | | |
| | | In case of maritime transport, this element is to provide the voyage number declared in the vessal call. | | | |
| C220 | | MODE OF TRANSPORT | C | 1 | R |
| | | Method of transport code or name. Code preferred. | | | |
| | 8067 | Transport mode name code | C | an..3 | R |
| | | Code specifying the name of a mode of transport. | | | |
| | | UN Recommendation 19 - Code for Modes of Transport. | | | |
| | | 1 Maritime | | | |
| | | 2 Rail | | | |
| | | 3 Road | | | |

| | | | | | |
|-------------|-------------|---|------------|---------------|----------|
| | 4 | Air | | | |
| | 8 | Inland water | | | |
| | 9 | Transport mode not applicable | | | |
| C001 | 8066 | Transport mode name | C | an..17 | X |
| | | TRANSPORT MEANS | C 1 | | O |
| | | Code and/or name identifying the type of means of transport. | | | |
| | | <i>Only for compatibility with SMDG proposal. It will not be processed by JUL system.</i> | | | |
| | 8179 | Transport means description code | C | an..8 | O |
| | | Code specifying the means of transport. | | | |
| | | Refer to D.16A Data Element Dictionary for acceptable code values. | | | |
| | 1131 | Code list identification code | C | an..17 | O |
| | | Code identifying a user or association maintained code list. | | | |
| | 3055 | Code list responsible agency code | C | an..3 | O |
| | | Code specifying the agency responsible for a code list. | | | |
| | | Refer to D.16A Data Element Dictionary for acceptable code values. | | | |
| | 8178 | Transport means description | C | an..17 | O |
| | | Free form description of the means of transport. | | | |
| C040 | | CARRIER | C 1 | | O |
| | | Identification of a carrier by code and/or by name. Code preferred. | | | |
| | | <i>Only for compatibility with SMDG proposal. It will not be processed by JUL system.</i> | | | |
| | 3127 | Carrier identifier | C | an..17 | O |
| | | To identify a carrier. | | | |
| | 1131 | Code list identification code | C | an..17 | O |
| | | Code identifying a user or association maintained code list. | | | |
| | 3055 | Code list responsible agency code | C | an..3 | O |
| | | Code specifying the agency responsible for a code list. | | | |
| | | Refer to D.16A Data Element Dictionary for acceptable code values. | | | |
| | 3126 | Carrier name | C | an..35 | O |
| | | Name of a carrier. | | | |
| 8101 | | TRANSIT DIRECTION INDICATOR CODE | C 1 | an..3 | X |
| C401 | | EXCESS TRANSPORTATION INFORMATION | C 1 | | X |
| | | To provide details of reason for, and responsibility for, use of transportation other than normally utilized. | | | |
| | 8457 | Excess transportation reason code | M | an..3 | X |
| | | Code specifying the reason for excess transportation. | | | |
| | 8459 | Excess transportation responsibility code | M | an..3 | X |
| | | Code specifying the responsibility for excess transportation. | | | |
| | 7130 | Customer shipment authorisation identifier | C | an..17 | X |
| | | To identify the authorisation to ship issued by the customer. | | | |

| | | | | |
|-------------|--|----------|----------------|----------|
| C222 | TRANSPORT IDENTIFICATION | C | 1 | O |
| | Code and/or name identifying the means of transport. | | | |
| | Usage complemented in local document if mentioned in that document. | | | |
| 8213 | Transport means identification name identifier | C | an..35 | O |
| | Identifies the name of the transport means. | | | |
| 1131 | Code list identification code | C | an..17 | O |
| | Code identifying a user or association maintained code list. | | | |
| | 103 Call sign directory | | | |
| | 146 Means of transport identification | | | |
| 3055 | Code list responsible agency code | C | an..3 | O |
| | Code specifying the agency responsible for a code list. | | | |
| | 11 Lloyd's register of shipping | | | |
| | Only for compatibility with SMDG proposal. It will not be processed by JUL system. | | | |
| | 54 IMO (International Maritime Organisation) | | | |
| | ZZZ Mutually defined | | | |
| | Only for compatibility with SMDG proposal. It will not be processed by JUL system. | | | |
| 8212 | Transport means identification name | C | an..70 | O |
| | Name identifying a means of transport. | | | |
| 8453 | Transport means nationality code | C | an..3 | O |
| | Code specifying the nationality of a means of transport. | | | |
| | Flag of means of transport (ISO 3166 country code, 2 alpha). | | | |
| 8281 | TRANSPORT MEANS OWNERSHIP INDICATOR CODE | C | 1 an..3 | X |
| C003 | POWER TYPE | C | 1 | X |
| | To specify the type of power. | | | |
| 7041 | Power type code | C | an..3 | X |
| | Code indicating the type of power. | | | |
| 1131 | Code list identification code | C | an..17 | X |
| | Code identifying a user or association maintained code list. | | | |
| 3055 | Code list responsible agency code | C | an..3 | X |
| | Code specifying the agency responsible for a code list. | | | |
| 7040 | Power type description | C | an..17 | X |
| | Description of the type of power. | | | |

Segment: **DTM** Date/Time/Period
Position: 00870
Group: Segment Group 18 (Transport Information) Conditional (Optional)
Level: 3
Usage: Conditional (Optional)
Max Use: 9
Purpose: A segment to specify the date(s) and time(s) related to the pre- or on-carriage transport.

Dependency Notes:**Semantic Notes:****Comments:**

Notes: Only for compatibility with SMDG proposal. It will not be processed by JUL system.

Data Element Summary

| Data Element | Component Element | Name | Base Attributes | | User Attributes |
|---------------------|--------------------------|---|------------------------|---------------|------------------------|
| C507 | | DATE/TIME/PERIOD | M | 1 | M |
| | | Date and/or time, or period relevant to the specified date/time/period type. | | | |
| | 2005 | Date or time or period function code qualifier | M | an..3 | M |
| | | Code qualifying the function of a date, time or period. Refer to D.16A Data Element Dictionary for acceptable code values. | | | |
| | 2380 | Date or time or period text | C | an..35 | O |
| | | The value of a date, a date and time, a time or of a period in a specified representation. | | | |
| | 2379 | Date or time or period format code | C | an..3 | O |
| | | Code specifying the representation of a date, time or period. Refer to D.16A Data Element Dictionary for acceptable code values. | | | |

Segment: **RFF** Reference
Position: 00880
Group: Segment Group 18 (Transport Information) Conditional (Optional)
Level: 3
Usage: Conditional (Optional)
Max Use: 9
Purpose: A segment to specify an additional information related to transport details

Dependency Notes:**Semantic Notes:****Comments:**

Notes: Usage complemented in local document if mentioned in that document.

Although this segment is marked as optional, in the JUL implementation this is the preferred way to identify a visit id (vessel call). The usage is to put this id in DE:1154 associated with qualifier 'ATZ' in 1153. This identification is provided by the JUL system.

Example: Leixões visit id PTLEI118001032

RFF+ATZ:PTLEI118001032'

Data Element Summary

| Data Element | Component Element | Name | Base Attributes | | User Attributes |
|---------------------|--------------------------|----------------------------------|------------------------|---------------|------------------------|
| C506 | | REFERENCE | M | 1 | M |
| | | Identification of a reference. | | | |
| | 1153 | Reference code qualifier | M | an..3 | M |
| | | Code qualifying a reference. | | | |
| | | ATZ Ship's stay reference number | | | |
| | 1154 | Reference identifier | C | an..70 | O |
| | | Identifies a reference. | | | |
| | 1156 | Document line identifier | C | an..6 | X |
| | 1056 | Version identifier | C | an..9 | X |
| | 1060 | Revision identifier | C | an..6 | X |

Group: **LOC** Segment Group 19: Place/Location Identification
Position: 00890
Group: Segment Group 18 (Transport Information) Conditional (Optional)
Level: 3
Usage: Conditional (Optional)
Max Use: 9
Purpose: A segment group to specify ports and other locations associated with pre- or on-carriage transport.
Notes: Only for compatibility with SMDG proposal. It will not be processed by JUL system.

Segment Summary

| | Pos. | Seg. | | Req. | Max. | Group: |
|---|-------------------|------------------|-------------------------------|--------------------|-------------------|----------------------|
| | <u>No.</u> | <u>ID</u> | <u>Name</u> | <u>Des.</u> | <u>Use</u> | <u>Repeat</u> |
| M | 00900 | LOC | Place/Location Identification | M | 1 | |

Segment: **LOC** **Place/Location Identification**
Position: 00900 (Trigger Segment)
Group: Segment Group 19 (Place/Location Identification) Conditional (Optional)
Level: 3
Usage: Mandatory
Max Use: 1
Purpose: A segment to specify ports/locations associated with the pre- or on-carriage transport, such as: - place of departure - place of arrival

Dependency Notes:**Semantic Notes:****Comments:**

Notes: Only for compatibility with SMDG proposal. It will not be processed by JUL system.

Data Element Summary

| <u>Data Element</u> | <u>Component Element</u> | <u>Name</u> | <u>Base Attributes</u> | | <u>User Attributes</u> |
|---------------------|--------------------------|---|------------------------|---------|------------------------|
| 3227 | | LOCATION FUNCTION CODE QUALIFIER Code identifying the function of a location. Refer to D.16A Data Element Dictionary for acceptable code values. | M | 1 an..3 | M |
| C517 | | LOCATION IDENTIFICATION Identification of a location by code or name. | C | 1 | O |
| | 3225 | Location identifier To identify a location. | C | an..35 | O |
| | 1131 | Code list identification code Code identifying a user or association maintained code list. | C | an..17 | O |
| | 3055 | Code list responsible agency code Code specifying the agency responsible for a code list. Refer to D.16A Data Element Dictionary for acceptable code values. | C | an..3 | O |
| | 3224 | Location name Name of the location. | C | an..256 | O |
| C519 | | RELATED LOCATION ONE IDENTIFICATION Identification the first related location by code or name. | C | 1 | O |
| | 3223 | First related location identifier To identify a first related location. | C | an..35 | O |
| | 1131 | Code list identification code Code identifying a user or association maintained code list. | C | an..17 | O |
| | 3055 | Code list responsible agency code Code specifying the agency responsible for a code list. Refer to D.16A Data Element Dictionary for acceptable code values. | C | an..3 | O |
| | 3222 | First related location name Name of first related location. | C | an..70 | O |

| | | | | |
|-------------|---|----------|----------------|----------|
| C553 | RELATED LOCATION TWO IDENTIFICATION | C | 1 | O |
| | Identification of second related location by code or name. | | | |
| 3233 | Second related location identifier | C | an..35 | O |
| | To identify a second related location. | | | |
| 1131 | Code list identification code | C | an..17 | O |
| | Code identifying a user or association maintained code list. | | | |
| 3055 | Code list responsible agency code | C | an..3 | O |
| | Code specifying the agency responsible for a code list. Refer to D.16A Data Element Dictionary for acceptable code values. | | | |
| 3232 | Second related location name | C | an..70 | O |
| | Name of the second related location. | | | |
| 5479 | RELATION CODE | C | 1 an..3 | O |
| | Code specifying a relation. | | | |

Group: **NAD** Segment Group 20: Name and Address
Position: 00920
Group: Segment Group 13 (Equipment Details) Mandatory
Level: 2
Usage: Conditional (Optional)
Max Use: 9
Purpose: A group of segments to identify different parties/places, and related dates/times.
Notes: Usage complemented in local document if mentioned in that document.

One usage of this group is to specify the Shipping Agent that is responsible for the equipment or general cargo shipment in the call, whenever it is responsible by the vessel call or not. In this case NAD:3035 is 'AG'.

Other usage is to identify the road (NAD:3035 = 'GA') or rail (NAD:3035 = 'GT') operator that will carry the equipment or the shipment, if known.

Other usage is to identify the entities related with the Verified Gross Mass (weight). It is the case when NAD:3035 in {'AM', 'SPC', 'WPA'}.

Other usage is to identify the party receiving or delivering the goods at the location identified in SG13:LOC. In this case NAD:3035 = 'JC' or NAD:3035 = 'JB', respectively. This usage is the preferred way to cope with some situations, when the code in SG13:LOC:C517:3225 is not sufficient to identify the location for delivery or reception of goods, due to the lack of detail inherent to the reference code. This is mainly applied when SG13:LOC:3227 in {'83', '88'} in that a particular installation may be identified.

Segment Summary

| | Pos. | Seg. | | Req. | Max. | Group: |
|---|-------------------|------------------|--------------------|--------------------|-------------------|----------------------|
| | <u>No.</u> | <u>ID</u> | <u>Name</u> | <u>Des.</u> | <u>Use</u> | <u>Repeat</u> |
| M | 00930 | NAD | Name and Address | M | 1 | |

Segment: **NAD** Name and Address
Position: 00930 (Trigger Segment)
Group: Segment Group 20 (Name and Address) Conditional (Optional)
Level: 2
Usage: Mandatory
Max Use: 1
Purpose: A segment to specify a related address or party, such as: - charges payer - country/place of container stuffing - place of collection - final place of positioning - message to - next destination - release to party - carrier agent (sea) - return address

Dependency Notes:**Semantic Notes:****Comments:**

Notes: Usage complemented in local document if mentioned in that document.

Example: Transport equipment responsible agent identified by EORI PT556734947.

NAD+AG+PT556734947:160'

Example: Authorised official for VGM purposes is Mr. John Green.

NAD+AM+++JOHN GREEN'

Data Element Summary

| Data Element | Component Element | Name | Base Attributes | User Attributes |
|---------------------|--------------------------|--|------------------------|------------------------|
| 3035 | | PARTY FUNCTION CODE QUALIFIER | M 1 an..3 | M |
| | | Code giving specific meaning to a party. | | |
| | | AG Agent | | |
| | | AM Authorized official | | |
| | | CA Carrier | | |
| | | CB Customs broker | | |
| | | CF Container operator/lessee | | |
| | | CN Consignee | | |
| | | CZ Consignor | | |
| | | EQ Empty container responsible party | | |

| | | |
|-----|---|--|
| | | not be processed by JUL system. |
| FP | Freight/charges payer | Only for compatibility with SMDG proposal. It will not be processed by JUL system. |
| GA | Road carrier | |
| GT | Rail carrier | |
| HR | Shipping line service | Only for compatibility with SMDG proposal. It will not be processed by JUL system. |
| IO | Insurance company | Only for compatibility with SMDG proposal. It will not be processed by JUL system. |
| JB | Goods collection party | Use this qualifier to identify the party responsible for the terminal delivering the goods for carriage at the location identified in SG13:LOC, when SG13:LOC:3227 = '88'. |
| JC | Party at final place of positioning | Use this qualifier to identify the party responsible for terminal receiving the goods from carriage at the location identified in SG13:LOC, when SG13:LOC:3227 = '83'. |
| MF | Manufacturer of goods | Only for compatibility with SMDG proposal. It will not be processed by JUL system. |
| OG | Owner or lessor's surveyor | Only for compatibility with SMDG proposal. It will not be processed by JUL system. |
| OH | Lessee's surveyor | Only for compatibility with SMDG proposal. It will not be processed by JUL system. |
| SPC | SOLAS verified gross mass responsible party | |
| ST | Ship to | Only for compatibility with SMDG proposal. It will not be processed by JUL system. |
| WPA | Weighting party | |

C082

PARTY IDENTIFICATION DETAILS **C 1 D**

Identification of a transaction party by code.

Not used when DE:3035 = 'AM'.

Required if DE:3035 in {'AG', 'GA', 'GT'}.

Preferred if DE:3035 in {'JB', 'JC'}.

| | | | | |
|-------------|--|----------|---------------|----------|
| 3039 | Party identifier | M | an..35 | M |
| | Code specifying the identity of a party. | | | |
| | Number corresponding to EORI of the entity, or another code mutually agreed between the parties. | | | |
| 1131 | Code list identification code | C | an..17 | O |

| | | | | | |
|-------------|-------------|---|----------|---------------|----------|
| | | Code identifying a user or association maintained code list. | | | |
| | | Usage complemented in local document if mentioned in that document. | | | |
| | 160 | Party identification | | | |
| | 3055 | Code list responsible agency code | C | an..3 | O |
| | | Code specifying the agency responsible for a code list. | | | |
| | | Refer to D.16A Data Element Dictionary for acceptable code values. | | | |
| C058 | | NAME AND ADDRESS | C | 1 | O |
| | | Unstructured name and address: one to five lines. | | | |
| | | Only for compatibility with SMDG proposal. It will not be processed by JUL system. | | | |
| | 3124 | Name and address description | M | an..35 | M |
| | | Free form description of a name and address line. | | | |
| | 3124 | Name and address description | C | an..35 | O |
| | | Free form description of a name and address line. | | | |
| | 3124 | Name and address description | C | an..35 | O |
| | | Free form description of a name and address line. | | | |
| | 3124 | Name and address description | C | an..35 | O |
| | | Free form description of a name and address line. | | | |
| | 3124 | Name and address description | C | an..35 | O |
| | | Free form description of a name and address line. | | | |
| C080 | | PARTY NAME | C | 1 | D |
| | | Identification of a transaction party by name, one to five lines. Party name may be formatted. | | | |
| | | Use if DE:3035 in {'AM', 'SPC', 'WPA'}. | | | |
| | | Use if DE:3035 in {'JB', 'JC'} and the company id to be used in DE:C082:3039 is unknown. | | | |
| | 3036 | Party name | M | an..70 | M |
| | | Name of a party. | | | |
| | | If DE:3035 in {'SPC', 'WPA'} then send company name. | | | |
| | | If DE:3035 = 'AM' then send the name in capitals of the person authorized to sign the shipping document declaring a verifeid gross mass (weight). | | | |
| | | If DE:3035 in {'JB', 'JC'} and the company id to be used in DE:C082:3039 is unknown. | | | |
| | 3036 | Party name | C | an..70 | X |
| | 3036 | Party name | C | an..70 | X |
| | 3036 | Party name | C | an..70 | X |
| | 3036 | Party name | C | an..70 | X |
| | 3045 | Party name format code | C | an..3 | X |
| C059 | | STREET | C | 1 | D |
| | | Street address and/or PO Box number in a structured address: one to four lines. | | | |

| | | | | | |
|-------------|-------------|--|----------|-----------------|--|
| | | | | | Use if DE:3035 in {'AM', 'SPC', 'WPA'}. |
| | | | | | Use if DE:3035 in {'JB', 'JC'} and the company id to be used in DE:C082:3039 is unknown. |
| | 3042 | Street and number or post office box identifier | M | an..35 | M |
| | | | | | To identify a street and number and/or Post Office box number. |
| | | | | | If DE:3035 in {'SPC', 'WPA'} then send company street and number. |
| | | | | | If DE:3035 in {'JB', 'JC'} and the company id to be used in DE:C082:3039 is unknown. |
| | 3042 | Street and number or post office box identifier | C | an..35 | X |
| | 3042 | Street and number or post office box identifier | C | an..35 | X |
| | 3042 | Street and number or post office box identifier | C | an..35 | X |
| 3164 | | CITY NAME | C | 1 an..35 | D |
| | | | | | Name of a city. |
| | | | | | If DE:3035 in {'SPC', 'WPA'} then send company city. |
| C819 | | COUNTRY SUBDIVISION DETAILS | C | 1 | O |
| | | | | | To specify a country subdivision, such as state, canton, county, prefecture. |
| | | | | | Only for compatibility with SMDG proposal. It will not be processed by JUL system. |
| | 3229 | Country subdivision identifier | C | an..9 | O |
| | | | | | To identify a country subdivision, such as state, canton, county, prefecture. |
| | 1131 | Code list identification code | C | an..17 | O |
| | | | | | Code identifying a user or association maintained code list. |
| | 3055 | Code list responsible agency code | C | an..3 | O |
| | | | | | Code specifying the agency responsible for a code list. |
| | | | | | Refer to D.16A Data Element Dictionary for acceptable code values. |
| | 3228 | Country subdivision name | C | an..70 | O |
| | | | | | Name of a country subdivision, such as state, canton, county, prefecture. |
| 3251 | | POSTAL IDENTIFICATION CODE | C | 1 an..17 | D |
| | | | | | Code specifying the postal zone or address. |
| | | | | | If DE:3035 in {'SPC', 'WPA'} then send company postal code. |
| 3207 | | COUNTRY IDENTIFIER | C | 1 an..3 | D |
| | | | | | Identification of the name of the country or other geographical entity as defined in ISO 3166-1 and UN/ECE Recommendation 3. |
| | | | | | If DE:3035 in {'SPC', 'WPA'} then send ISO 3166 Country Code, 2-Alpha. |

Segment: **CNT** Control Total
Position: 00980
Group:
Level: 0
Usage: Conditional (Required)
Max Use: 1
Purpose: A segment to specify the number of containers in the message, explicitly given by the sender.

Dependency Notes:**Semantic Notes:****Comments:**

Notes: This segment provides the total number of equipment reported in this message. In case there are only general cargo shipments mentioned, then send 0 (zero).

Example: The message reports 20 units.

CNT+16:20'

Example: The message reports 3 general cargo shipments.

CNT+16:0'

Data Element Summary

| <u>Data Element</u> | <u>Component Element</u> | <u>Name</u> | <u>Base Attributes</u> | | <u>User Attributes</u> |
|---------------------|--------------------------|---|------------------------|-------|------------------------|
| C270 | | CONTROL | M | 1 | M |
| | | Control total for checking integrity of a message or part of a message. | | | |
| | 6069 | Control total type code qualifier | M | an..3 | M |
| | | Code qualifying the type of control of hash total. | | | |
| | | 1 Total of line item quantities | | | |
| | | <i>Only for compatibility with SMDG proposal. It will not be processed by JUL system.</i> | | | |
| | | 16 Total number of equipment | | | |
| | 6066 | Control total quantity | M | n..18 | M |
| | | To specify the value of a control quantity. | | | |
| | 6411 | Measurement unit code | C | an..8 | X |

Segment: **UNT** Message Trailer
Position: 00990
Group:
Level: 0
Usage: Mandatory
Max Use: 1
Purpose: A service segment ending a message, giving the total number of segments in the message (including the UNH & UNT) and the control reference number of the message.

Dependency Notes:**Semantic Notes:****Comments:****Notes:** Example: 26 sent segments, message envelope reference "1357924680"

UNT+26+1357924680'

Data Element Summary

| Data Element | Component Element | Name | Base Attributes | | | User Attributes |
|---------------------|--------------------------|---|------------------------|---|--------|------------------------|
| 0074 | | NUMBER OF SEGMENTS IN A MESSAGE | M | 1 | n..6 | M |
| | | Control count of number of segments in a message. | | | | |
| 0062 | | MESSAGE REFERENCE NUMBER | M | 1 | an..14 | M |
| | | Unique message reference assigned by the sender. | | | | |