

CODECO Container Gate-in/Gate-out Report Message

Introduction:

A message by which a terminal, depot, etc. confirms that the containers specified have been delivered or picked up by the inland carrier (road, rail or barge). This message can also be used to report internal terminal container movements (excluding loading and discharging the vessel) and to report the change in status of container(s) without those containers having physically been moved.

This message is part of a total set of container-related messages. These messages serve to facilitate the intermodal handling of containers by streamlining the information exchange. The business scenario for the container messages is clarified in a separate document, called: 'Guide to the scenario of EDIFACT container messages'.

Notes:

This Message Implementation Guideline (MIG) has been developed by JUL Project Team, in the context of the JUL Portuguese Project (www.projeto-jul.pt).

In this context, the following items are considered. The document provides the definition of the Cargo Gate-In/Gate-Out report message to be used in electronic data interchange with Port Terminals, Logistics Platforms/Dry Ports, cargo operators or their representatives, related with cargo movements in Portuguese ports.

The message is used for terminals, depot, logistics platforms, and so on, confirm that the specified cargo has been delivered or picked up by an inland carrier (rail, road, inland waterways).

Also it is used for inventory control, facilitating the process of shipping cargo to the next means of transport, for Customs and operational control.

Under this scope, the following principles apply:

- In case of road transport, the message should be used to report Gate-In/Gate-Out movements.
- In the case of rail transport, the message is intended to report cargo loaded and/or unloaded, as well the wagons used in the transport.
- In the case of inland waterways transport, the message is intended to report cargo loaded and/or unloaded, as well the barges used in the transport.
- When agreed between parties, the message can be used to exchange documents related with the cargo.
- This message suits as a basis for the Declaration of Transport creation for a rail operator. The sender should clearly identify all the data necessary for this purpose, including: sender, recipient, dangerous goods, transport equipment full/empty, rail carrier, goods customs status, and empty wagons.

- The message can be used to report the Verified Gross Mass information by the terminals, whatever way of collecting this information was used: transport equipment weighted by the terminal or information received from third parties.
- The message can also be used to report changes of location of cargo while in the port.
- In case of rail transport, the sequence order of the wagons in the train, from front to rear, should be sent to ensure the correct incorporation of them. In this MIG this is done by the usage of one FTX occurrence in SG10, and this should be the approach on new or updated implementations. However, on current implementations it is acceptable that this sequence order can be expressed by the sequence of SG10 (EQD) in the message.
- The message can also be used to report changes of responsibility on the cargo, or changes of cargo status (not from Customs perspective).

Due to the existence of current implementations of this message in some Portuguese ports, the document signals where backward compability is relevant. However, new or updated implementations must follow this MIG and shall ignore these specific exceptions.

Additionally to the UN/EDIFACT definition and scope, this MIG is used also applied to general cargo.

This MIG provides guidance to the recommended usage of codes, qualifiers, data elements, composites, segments and groups of segments in the D.16A CODECO. The intention is to assist developers and ensure consistent use of the CODECO message throughout the worldwide trade and transport community.

The MIG was elaborated considering the following references:

- UN/EDIFACT D.16A CODECO
- UN/EDIFACT D.16A Data Element Codes
- ISO 6346, 2nd and 3rd editions, and amendments – Freight containers – Coding, identification and marking
- UN/ECE Recommendation 7 – Numerical Representation of Dates, Time, and Periods of Time
- UN/ECE Recommendation 16 (3rd edition) – UN/LOCODE – Codes for Ports and Other Locations
- UN/ECE Recommendation 19 (2nd edition) – Codes for Modes of Transport
- UN/ECE Recommendation 20 – Codes for Units of Measure Used in International Trade
- ITIGG: General Recommendations Version 2.1 March 2001
- SMDG MIG CODECO Version 2.1-3

Being based on SMDG MIG does not mean a full adoption of SMDG proposals. In some situations, groups, segments, elements or codes are not applicable. In other situations, groups, segments, elements or codes are included but notes are present to inform the purpose of SMDG proposal compability.

Notes on this matter will be in font Courier New 8pt Bold.

Usage indicators in this MIG follow ITIGG Recommendation D4/G44.

Status Indicators (“M” and “C”) form part of the UN/EDIFACT standard and indicate a minimum requirement to fulfil the needs of the message structure. They are not adequate for implementation purposes. The Status Indicators are:

Value Description

M Mandatory

The entity marked as such must appear in all messages, and apply to these messages as well as to any associated implementation guidelines (and consequently is also a Usage Indicator).

C Conditional

The entity is used by agreement between trading partners.

Usage Indicators are implementation related indicators that further detail the use of “Conditional” Status Indicators. Usage Indicators are applied at all levels of the guidelines and shown adjacent to data items such as segment groups, segments, composite data elements and simple data elements. They dictate the agreed usage of the data items or entities. The Usage Indicators are:

Value Description

M Mandatory

Indicates the item is mandatory in the UN/EDIFACT message.

R Required

Indicates the item must be transmitted in this implementation.

D Dependent

Indicates that the use of the item is depending on a well-defined condition or set of conditions. These conditions must be clearly specified in the relevant implementation guideline.

O Optional

Indicates that this item is at the need or discretion of both trading partners.

X Not Used

Indicates that this item is not to be used in this implementation.

Where an item within a segment group, segment or composite data element is marked with Usage Indicators “M” or “R”, but the segment group, segment or composite data element has been marked “O” or “D” (or for that matter “X”), the item is only to be transmitted when the segment group, segment or composite of which it is a part, is used.

Examples in the text are just related with the segments where they appear. They are not necessarily related between each other.

*** Special Note On General Cargo

The CODECO message was not designed to report gate-in/gate-out or other land side movements of general cargo. For this reason, this MIG defines a segments' and elements' usage that supports a mechanism to represent general cargo movements. This is described in SG10 (EQD) notes.

*** Special Note On Local Usage

Due to the diverse realities of the Portuguese ports and the stakeholders operating in them, it is necessary to define local rules, codes, etc. But this needs to be done considering the harmonization framework that this

document defines.

In order to avoid a heavy guideline where all local port specifics are expressed, the approach is to redirect the reader to an external document when applicable. The external document should be elaborated by the each port when justified.

However all stakeholders should have the following in mind. The local specifications are complementary to this document, they are used to document current implementations, and should not be a justification for new or updated implementations avoid the full adoption of this document.

Due to the requirement of Terminal Operators in the role of Depositary, to report equipment of transport or general cargo movements through the gate to Customs Summary Declaration System using electronic messages, this Message Implementation Guideline will refer to the elements of the message to be sent to Customs, related directly or indirectly with EDIFACT elements.

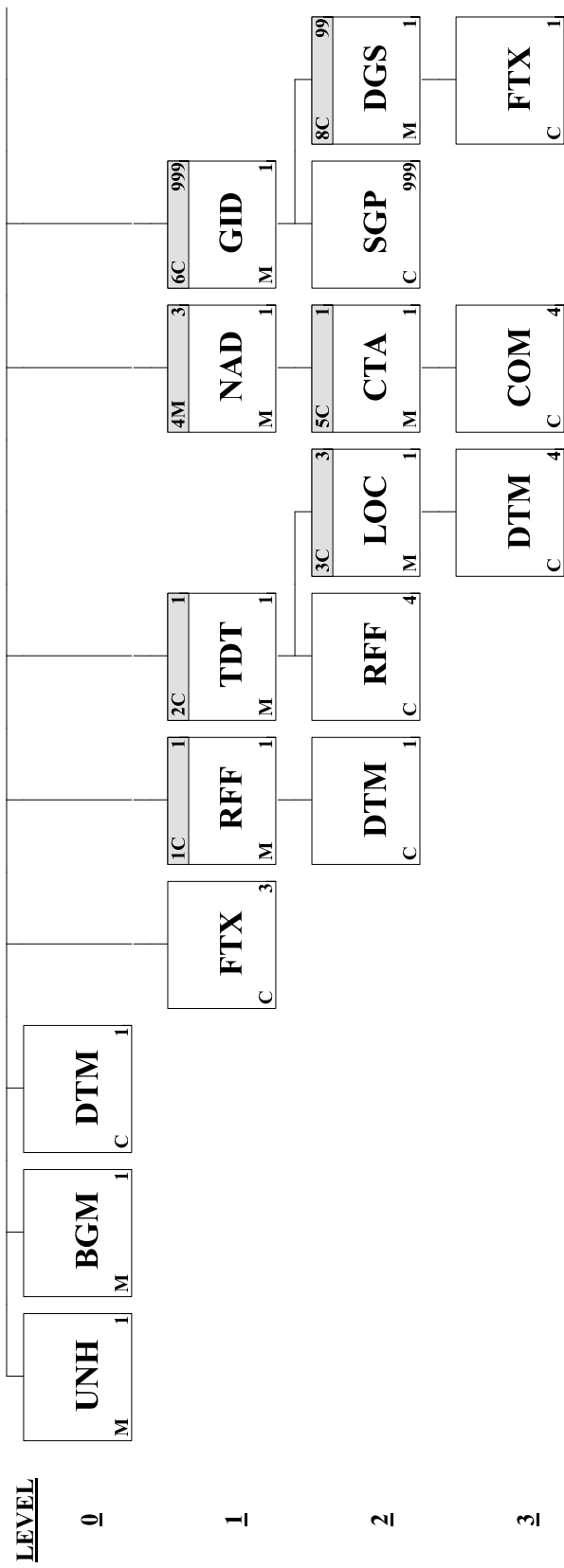
In the context of CODECO the messages to Customs are known by SeaWarehouseKeeperContainersMovement and SeaWarehouseKeeperCargoMovement.

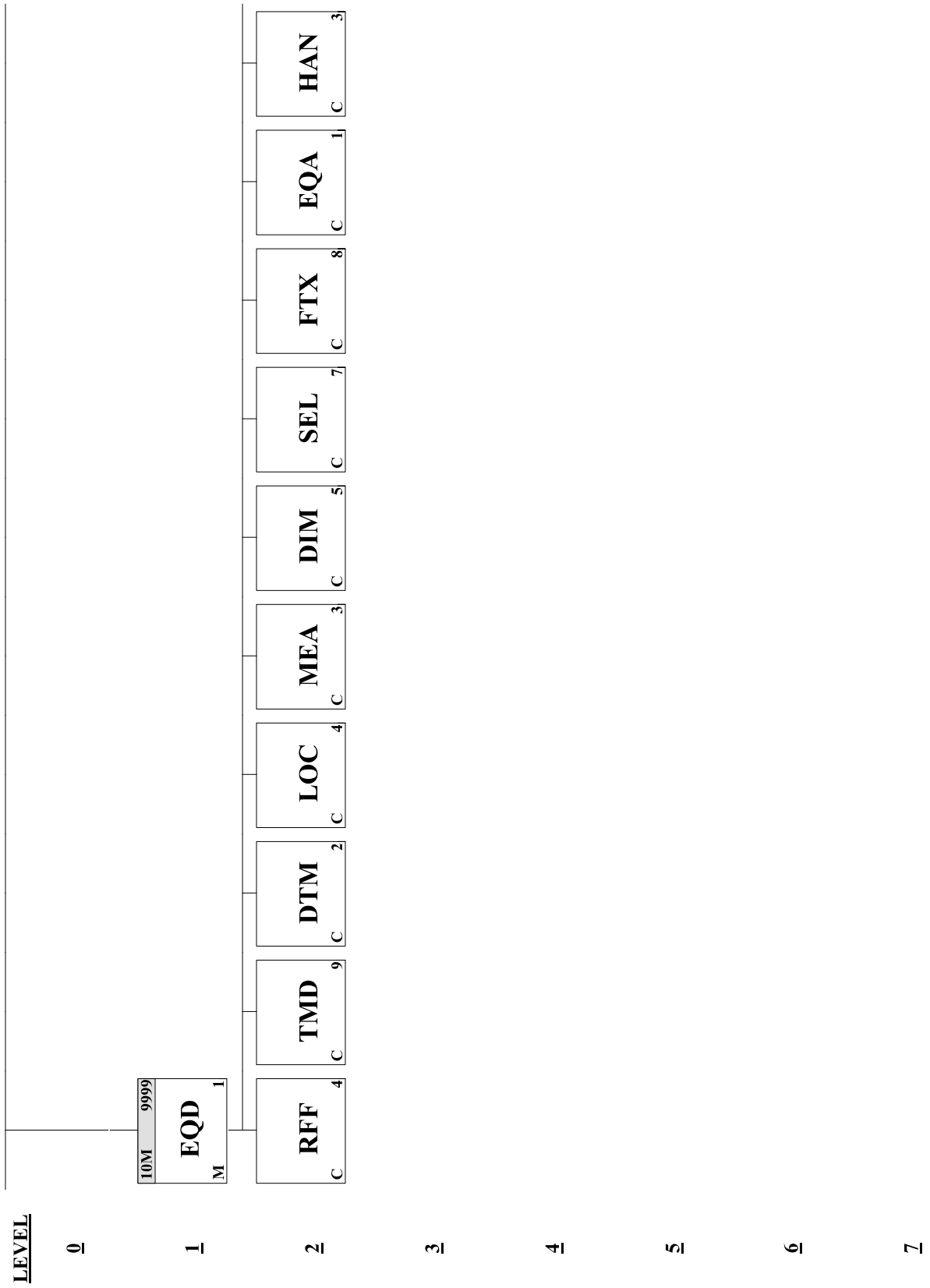
Most of the elements in the above mentioned messages are common to both. When an element is specific to just one of them, that will be mentioned.

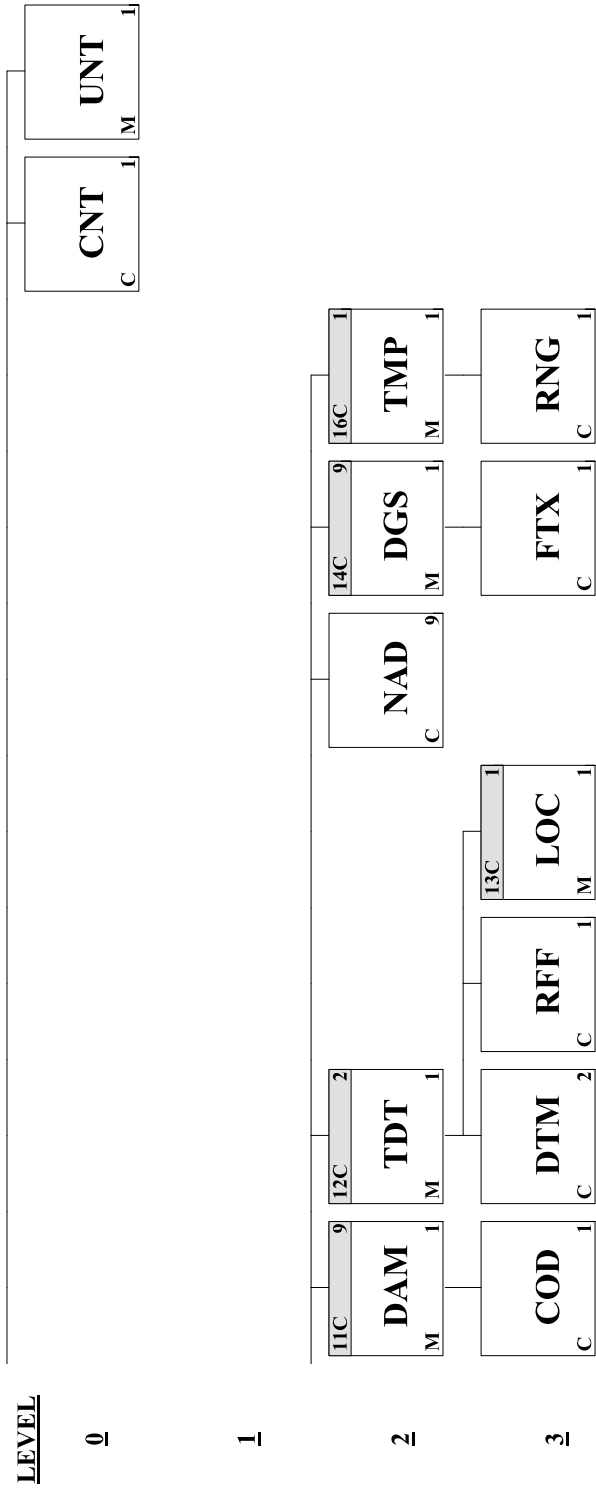
The notes on this matter will be in italic.

<u>Page No.</u>	<u>Pos. No.</u>	<u>Seg. ID</u>	<u>Name</u>	<u>Base Guide</u>	<u>User Status</u>	<u>Max.Use</u>	<u>Group Repeat</u>	<u>Notes and Comments</u>
9	00010	UNH	Message Header	M	M	1		
11	00020	BGM	Beginning of Message	M	M	1		
15	00030	DTM	Date/Time/Period	C	O	1		
16	00040	FTX	Free Text	C	O	3		
	00050		Segment Group 1: RFF-DTM	C	O		1	
19	00060	RFF	Reference	M	M	1		
21	00070	DTM	Date/Time/Period	C	O	1		
	00080		Segment Group 2: TDT-RFF-SG3	C	O		1	
23	00090	TDT	Transport Information	M	M	1		
26	00110	RFF	Reference	C	O	4		
	00120		Segment Group 3: LOC-DTM	C	O		3	
29	00130	LOC	Place/Location Identification	M	M	1		
31	00140	DTM	Date/Time/Period	C	O	4		
	00150		Segment Group 4: NAD-SG5	M	M		3	
33	00160	NAD	Name and Address	M	M	1		
	00170		Segment Group 5: CTA-COM	C	O		1	
38	00180	CTA	Contact Information	M	M	1		
39	00190	COM	Communication Contact	C	R	4		
	00200		Segment Group 6: GID-SGP-SG8	C	D		999	
41	00210	GID	Goods Item Details	M	M	1		
44	00290	SGP	Split Goods Placement	C	O	999		
	00300		Segment Group 8: DGS-FTX	C	R		99	

46	00310	DGS	Dangerous Goods	M	M	1
49	00320	FTX	Free Text	C	O	1
	00370		Segment Group 10: EQD-RFF-TMD -DTM-LOC-MEA-DIM-SEL-FTX-EQA -HAN-SG11-SG12-NAD-SG14-SG16	M	M	9999
55	00380	EQD	Equipment Details	M	M	1
59	00390	RFF	Reference	C	O	4
63	00400	TMD	Transport Movement Details	C	O	9
64	00410	DTM	Date/Time/Period	C	R	2
66	00420	LOC	Place/Location Identification	C	R	4
72	00430	MEA	Measurements	C	R	3
75	00440	DIM	Dimensions	C	O	5
77	00450	SEL	Seal Number	C	D	7
79	00460	FTX	Free Text	C	D	8
83	00480	EQA	Attached Equipment	C	D	1
85	00500	HAN	Handling Instructions	C	O	3
	00510		Segment Group 11: DAM-COD	C	O	9
89	00520	DAM	Damage	M	M	1
91	00530	COD	Component Details	C	O	1
	00540		Segment Group 12: TDT-DTM-RFF -SG13	C	D	2
93	00550	TDT	Transport Information	M	M	1
97	00560	DTM	Date/Time/Period	C	O	2
98	00570	RFF	Reference	C	O	1
	00580		Segment Group 13: LOC	C	O	1
100	00590	LOC	Place/Location Identification	M	M	1
102	00610	NAD	Name and Address	C	O	9
	00620		Segment Group 14: DGS-FTX	C	O	9
108	00630	DGS	Dangerous Goods	M	M	1
111	00640	FTX	Free Text	C	O	1
	00690		Segment Group 16: TMP-RNG	C	D	1
114	00700	TMP	Temperature	M	M	1
115	00710	RNG	Range Details	C	O	1
116	00720	CNT	Control Total	C	R	1
117	00730	UNT	Message Trailer	M	M	1







Segment: **UNH** Message Header
Position: 00010
Group:
Level: 0
Usage: Mandatory
Max Use: 1
Purpose: A service segment starting and uniquely identifying a message. The message type code for the Container gate-in/gate-out report message is CODECO.
 Note: Container gate-in/gate-out report messages conforming to this document must contain the following data in segment UNH, composite S009:
 Data element 0065 CODECO 0052 D 0054 16A 0051
 UN

Dependency Notes:**Semantic Notes:****Comments:**

Notes: Example: Message envelope number "1357924680", type "CODECO", UN/Edifact directory "D16A"

UNH+1357924680+CODECO:D:16A:UN'

Data Element Summary

<u>Data Element</u>	<u>Component Element</u>	<u>Name</u>	<u>Base Attributes</u>		<u>User Attributes</u>
0062		MESSAGE REFERENCE NUMBER	M	1 an..14	M
		Unique message reference assigned by the sender.			
S009		MESSAGE IDENTIFIER	M	1	M
		Identification of the type, version etc. of the message being interchanged.			
	0065	Message type identifier	M	an..6	M
		Code identifying a type of message and assigned by its controlling agency.			
		CODECO Container gate-in/gate-out report message			
	0052	Message type version number	M	an..3	M
		Version number of a message type.			
		D Draft version/UN/EDIFACT Directory			
	0054	Message type release number	M	an..3	M
		Release number within the current message type version number (0052).			
		16A Release 2016 - A			
		95B Release 1995 - B			
		Only for backward compatibility.			
	0051	Controlling agency	M	an..2	M
		Code identifying the agency controlling the specification, maintenance and publication of the message type.			
		UN UN/CEFACT			
	0057	Association assigned code	C	an..6	O
		Code, assigned by the association responsible for the design and maintenance of the			

message type concerned, which further identifies the message.

Only for compatibility with SMDG proposal. It will not be processed by JUL system.

0068	COMMON ACCESS REFERENCE	C	1	an..35	O
	Reference serving as a key to relate all subsequent transfers of data to the same business case or file.				
	Only for compatibility with SMDG proposal. It will not be processed by JUL system.				
S010	STATUS OF THE TRANSFER	C	1		X
	Statement that the message is one in a sequence of transfers relating to the same topic.				
0070	Sequence message transfer number	M		n..2	X
	Number assigned by the sender indicating that the message is an addition or change of a previously sent message relating to the same topic.				
0073	First/last sequence message transfer indication	C		a1	X
	Indication used for the first and last message in a sequence of the same type of message relating to the same topic.				

Segment: **BGM** Beginning of Message
Position: 00020
Group:
Level: 0
Usage: Mandatory
Max Use: 1
Purpose: A segment to indicate the beginning of a message and to transmit identifying number and the further specification of the message type (in data element 1001: Document name code), such as Gate-in report, Gate-out report.

Dependency Notes:**Semantic Notes:****Comments:****Notes:**

Data element 1225 shall be used according to the following rules:

- Code '1' is used to cancel a report. This will be used when a report is sent for each equipment or general cargo shipment passing through the gate. An example of a cancellation message is, if a container is picked-up, but immediately returns to the terminal, the Terminal Operator may cancel the pick-up document issued. In this case, no verification of the equipment will be made. Segment group 9 must be sent in order to comply the EDIFACT Standard, but can contain 'dummy' values.

- Codes '2' and '3' are to be used when a equipment is added or deleted from the report. This is only admissible in case of a mistake in the equipment identification (this is, in data element EQD:8260) and/or equipment size/type (this is, element EQD:8155). For each message declaring removed equipment, it must exist a message with the same number of added equipment. This is, first the wrongly identified equipment must be removed, then the correctly identified equipment must be added. Only information about added/deleted equipment shall be specified, according to the rules defined.

- Code '4' shall be used to refer changes in EQD segment (other than the above ones) or at any other segment of Group 10. For instance, a transshipping equipment that has the port of discharge changed. Only information about changed equipment shall be specified, according to the rules defined.

- Code '9' indicates the original message. So, indicates the first version of the gate-in/gate-out report. The arrival of a message with this function corresponds to the delivery of the document. Only after the correct reception and integration of this message in the system, the receiver is aware of the document. For each document only on message with this function can exist.

Example: Transport equipment gate-out report message GO7544097, original.

BGM+109+GO75440947+9'

Data Element Summary

Data Element	Component Element Name	Base Attributes	User Attributes
---------------------	-------------------------------	------------------------	------------------------

C002	DOCUMENT/MESSAGE NAME	C	1	R
	Identification of a type of document/message by code or name. Code preferred.			
1001	Document name code	C	an..3	R
	Code specifying the document name.			

The value will be used to infer the value to use in "Movement Type" element.

34	Cargo status	<i>Only for back compatibility. It will be treated like '109'.</i>		
36	Identity card	<i>Only for back compatibility. It will be treated like '111'.</i>		
44	Transport status report	<i>Only for back compatibility. It will be treated like '119'.</i>		
46	Banking status	<i>Only for back compatibility. It will be treated like '122'.</i>		
57	Transport equipment on-hire report	<i>Only for compatibility with SMDG proposal. It will not be processed by JUL system.</i>		
58	Transport equipment off-hire report	<i>Only for compatibility with SMDG proposal. It will not be processed by JUL system.</i>		
103	Transport equipment direct interchange report	<i>Only for compatibility with SMDG proposal. It will not be processed by JUL system.</i>		
109	Transport movement gate in report	<i>Use value "Entry".</i>		
111	Transport movement gate out report	<i>Use value "Exit".</i>		
117	Transport equipment shift report	<i>Use value "Entry".</i>		
119	Transport discharge report	<i>To use when the inland mode of transport is Rail.</i>		
		<i>Use values "Entry".</i>		
122	Transport loading report	<i>To use when the inland mode of transport is Rail.</i>		

Use value "Exit".

- 265 Transport equipment movement report
Only for compatibility with SMDG proposal. It will not be processed by JUL system.
- 266 Transport equipment status change report

If the status change report (BGM:1001 = "266") reporting a change from a vessel call to/from a non-vessel reference, then use the value:

"Entry" if the equipment of transport is changing to a vessel call

"Exit" if the equipment of transport is changing from a vessel call

	1131	Code list identification code	C	an..17	X
	3055	Code list responsible agency code	C	an..3	X
	1000	Document name	C	an..35	X
C106		DOCUMENT/MESSAGE IDENTIFICATION	C	1	R
		Identification of a document/message by its number and eventually its version or revision.			
	1004	Document identifier	C	an..70	R
		To identify a document.			
		<i>The value will be used in "Message Identification" element.</i>			
	1056	Version identifier	C	an..9	X
	1060	Revision identifier	C	an..6	X
1225		MESSAGE FUNCTION CODE	C	1 an..3	R
		Code indicating the function of the message.			

If not expressed in SG10:FTX:C108:4440 (1st occurrence) when SG10:FTX:4451 = 'WHI', the value in this element will be used to infer the value to put in the "Action" element inside the "Item" element, according to the correspondance in the below list.

- 1 Cancellation

Use "Remove".

- 2 Addition

Use "CreateAndFinalize".

- 3 Deletion

Use "Remove".

4 Change

Use "UpdateAndFinalize".

5 Replace

Only for back compatibility.

9 Original

If the document is a gate-in, a gate-out, or a status change report then use "CreateAndFinalize".

If the document is a shift report, then use "UpdateAndFinalize".

4343	RESPONSE TYPE CODE	C	1	an..3	O
	Code specifying the type of acknowledgment required or transmitted.				
	AB				Message acknowledgement
1373	DOCUMENT STATUS CODE	C	1	an..3	X
3453	LANGUAGE NAME CODE	C	1	an..3	X

Segment: **DTM** Date/Time/Period
Position: 00030
Group:
Level: 0
Usage: Conditional (Optional)
Max Use: 1
Purpose: A segment to indicate a date and/or time applying to the whole message, such as date and time of document or message issue.

Dependency Notes:**Semantic Notes:****Comments:**

Notes: Usage complemented in local document if mentioned in that document.

The usage of this segment is to provide the date/time at which the sender creates the message. In this case DE:2005 will be '137'.

Example: Message issued on 2002/02/01 at 14:21

DTM+137:200202011421:203'

Data Element Summary

<u>Data Element</u>	<u>Component Element</u>	<u>Name</u>	<u>Base Attributes</u>		<u>User Attributes</u>
C507		DATE/TIME/PERIOD	M	1	M
		Date and/or time, or period relevant to the specified date/time/period type.			
	2005	Date or time or period function code qualifier	M	an..3	M
		Code qualifying the function of a date, time or period.			
		137 Document issue date time			
	2380	Date or time or period text	C	an..35	R
		The value of a date, a date and time, a time or of a period in a specified representation.			
		<i>The value will be used in "Message Date" element.</i>			
	2379	Date or time or period format code	C	an..3	R
		Code specifying the representation of a date, time or period.			
		203 CCYYMMDDHHMM			

Segment: **FTX** Free Text
Position: 00040
Group:
Level: 1
Usage: Conditional (Optional)
Max Use: 3
Purpose: A segment to specify free form or processable supplementary information, such as:
 - change information

Dependency Notes:**Semantic Notes:****Comments:**

Notes: Usage complemented in local document if mentioned in that document.

Example: Priority transport equipment

FTX+AAI+++PRIORITY TRANSPORT EQUIPMENT'

Data Element Summary

<u>Data Element</u>	<u>Component Element</u>	<u>Name</u>	<u>Base Attributes</u>			<u>User Attributes</u>
4451		TEXT SUBJECT CODE QUALIFIER	M	1	an..3	M
		Code qualifying the subject of the text.				
		AAI General information				
		CHG Change information				
		To be sent if the BGM:1225 <> '9'.				
		HAN Consignment handling instruction				
4453		FREE TEXT FUNCTION CODE	C	1	an..3	X
C107		TEXT REFERENCE	C	1		X
		Coded reference to a standard text and its source.				
	4441	Free text description code	M		an..17	X
		Code specifying free form text.				
	1131	Code list identification code	C		an..17	X
		Code identifying a user or association maintained code list.				
	3055	Code list responsible agency code	C		an..3	X
		Code specifying the agency responsible for a code list.				
C108		TEXT LITERAL	C	1		O
		Free text; one to five lines.				
	4440	Free text	M		an..512	M
		Free form text.				
	4440	Free text	C		an..512	O
		Free form text.				
	4440	Free text	C		an..512	O

	Free form text.				
4440	Free text	C	an..512	O	
	Free form text.				
4440	Free text	C	an..512	O	
	Free form text.				
3453	LANGUAGE NAME CODE	C	1 an..3	X	
4447	FREE TEXT FORMAT CODE	C	1 an..3	X	

Group: **RFF** Segment Group 1: Reference
Position: 00050
Group:
Level: 1
Usage: Conditional (Optional)
Max Use: 1
Purpose: A group of segments to specify a reference relating to the whole message, and its date and/or time.
Notes: Usage complemented in local document if mentioned in that document.

This group has two alternative functions.

If the message reflects a new document, it means it has the function "Original", and the group identifies the document that is being sent.

In all other cases, it shall be used to reference to a previously issued message of the document at stake.

When referring to previous messages, the methodology follows ITIGG's JM4/208 recommendation as stated in document JM4/ITIGG/96.101/v.131, with the exception of the inclusion of date information.

For referenced message identification, segments RFF and DTM (when present) of this group will be used.

Both situations can be present in the message simultaneously when the message is not "Original".

Segment Summary

	Pos.	Seg.		Req.	Max.	Group:
	<u>No.</u>	<u>ID</u>	<u>Name</u>	<u>Des.</u>	<u>Use</u>	<u>Repeat</u>
M	00060	RFF	Reference	M	1	
O	00070	DTM	Date/Time/Period	C	1	

Segment: **RFF** Reference
Position: 00060 (Trigger Segment)
Group: Segment Group 1 (Reference) Conditional (Optional)
Level: 1
Usage: Mandatory
Max Use: 1
Purpose: A segment to express a reference which applies to the entire message, such as: -
reference to previous message - container announcement reference number -
release order reference - acceptance order reference

Dependency Notes:**Semantic Notes:****Comments:**

Notes: Example: Operator's document 2004/002546-1.

RFF+ER:2004/002546-1'

Example: Reference to a previous messages identified by GI50938803.

RFF+ACW:GI50938803'

Data Element Summary

<u>Data Element</u>	<u>Component Element</u>	<u>Name</u>	<u>Base Attributes</u>		<u>User Attributes</u>
C506		REFERENCE	M	1	M
		Identification of a reference.			
	1153	Reference code qualifier	M	an..3	M
		Code qualifying a reference.			
		AAY Carrier's agent reference number Only for compatibility with SMDG proposal. It will not be processed by JUL system.			
		ACA Cargo acceptance order reference number Only for compatibility with SMDG proposal. It will not be processed by JUL system.			
		ACW Reference number to previous message Use when BGM:1225 <> '9'.			
		AKA Container disposition order reference number Only for compatibility with SMDG proposal. It will not be processed by JUL system.			
		ARJ Personal identity card number Only for compatibility with SMDG proposal. It will not be processed by JUL system.			
		ATX Transport equipment acceptance order reference Only for compatibility with SMDG proposal. It will not be processed by JUL system.			
		ATY Transport equipment release order reference Only for compatibility with SMDG proposal. It will			

		not be processed by JUL system.		
	BM	Bill of lading number Only for compatibility with SMDG proposal. It will not be processed by JUL system.		
	BN	Consignment identifier, carrier assigned Only for compatibility with SMDG proposal. It will not be processed by JUL system.		
	CN	Carrier's reference number Only for compatibility with SMDG proposal. It will not be processed by JUL system.		
	ER	Container/equipment receipt number Use when BGM:1225 = "9".		
	RE	Release number Only for compatibility with SMDG proposal. It will not be processed by JUL system.		
1154	Reference identifier		C	an..70 R
	Identifies a reference.			
	If DE:1153 = 'ACW' then send the identification of the previous message (value in BGM:1004 of the previous message) of this document.			
1156	Document line identifier		C	an..6 X
1056	Version identifier		C	an..9 X
1060	Revision identifier		C	an..6 X

Segment: **DTM** Date/Time/Period
Position: 00070
Group: Segment Group 1 (Reference) Conditional (Optional)
Level: 2
Usage: Conditional (Optional)
Max Use: 1
Purpose: A segment to indicate date and/or time related to the reference.

Dependency Notes:**Semantic Notes:****Comments:**

Notes: Usage complemented in local document if mentioned in that document.

The complete meaning of this date depends of the type of reference in the previous RFF segment, stated in RFF:C506:1153 data element.

Example: Date/time of the reference: "2003/10/08 - 10:15"

DTM+171:200310081015:203'

Data Element Summary

<u>Data Element</u>	<u>Component Element</u>	<u>Name</u>	<u>Base Attributes</u>		<u>User Attributes</u>
C507		DATE/TIME/PERIOD	M	1	M
		Date and/or time, or period relevant to the specified date/time/period type.			
	2005	Date or time or period function code qualifier	M	an..3	M
		Code qualifying the function of a date, time or period.			
		171 Reference date/time			
	2380	Date or time or period text	C	an..35	R
		The value of a date, a date and time, a time or of a period in a specified representation.			
	2379	Date or time or period format code	C	an..3	R
		Code specifying the representation of a date, time or period.			
		203 CCYYMMDDHHMM			

Group:	TDT Segment Group 2: Transport Information
Position:	00080
Group:	
Level:	1
Usage:	Conditional (Optional)
Max Use:	1
Purpose:	A group of segments to indicate information relating to the main carriage stage of the transport (sea).
Notes:	Usage complemented in local document if mentioned in that document.
	By default, equipment of transport or general cargo enters the port area by land in order to be loaded into a ship, or leaves the port area by land because they were discharged from a ship, except in transshipping situations where they enter and leave by sea.
	On situations where a Port Community System (PCS) is in place and contains vessel call information gathered and identified by a vessel call identification (also known as visit id), then these messages are supposed not to contain any information regarding vessels.
	The connection between these reports and the vessel call is made by referring the PCS vessel call identification (visit id) in the RFF segment included in this group.
	The vessel call must had been previously declared/opened in the PCS system, and will be matched with Customs Process Id (Contramarca).
	However, if the message sender does not have visit id in its system, it must use additional data about the vessel and the call, to allow the correct matching between the message and the vessel call. This scenario is not advised.
	Because terminal operator may offer depot services, it is possible that transport equipment is received not to be loaded into a ship, but to be stored in the depot. In this particular case, a specific PCS reference must be used (see code in the TDT -RFF notes).

The visit id that will be determined from the data in these groups will be used to infer from the PCS, the Contramarca value to be used in "Customs Reference Number" element.

Segment Summary

	Pos.	Seg.		Req.	Max.	Group:
	No.	ID	Name	Des.	Use	Repeat
M	00090	TDT	Transport Information	M	1	
O	00110	RFF	Reference	C	4	
	00120		Segment Group 3: Place/Location Identification	C		3

Segment: **TDT** **Transport Information**
Position: 00090 (Trigger Segment)
Group: Segment Group 2 (Transport Information) Conditional (Optional)
Level: 1
Usage: Mandatory
Max Use: 1
Purpose: A segment to indicate transport details related to the main carriage stage of the transport (sea), such as carrier/liner service.

Dependency Notes:**Semantic Notes:****Comments:**

Notes: Usage complemented in local document if mentioned in that document.

Example: Main carriage transport, maritime, voyage number NB528, vessel name Portlink Caravel.

TDT+20+NB528+1+++++:::PORTLINK CARAVEL'

Example: Main carriage transport, maritime, voyage number 0220, shipping company is Maersk, vessel SL PRIDE with IMO 8212661.

TDT+20+0220+1+++MAE:172:20:MAERSK+++8212661:146:11:SL PRIDE'

Data Element Summary

Data Element	Component Element	Name	Base Attributes			User Attributes
8051		TRANSPORT STAGE CODE QUALIFIER Code qualifying a specific stage of transport. 20 Main-carriage transport	M	1	an..3	M
8028		MEANS OF TRANSPORT JOURNEY IDENTIFIER To identify a journey of a means of transport. Usage complemented in local document if mentioned in that document. Vessel operator's voyage number. Either this element or SG2:RFF must be used to specify a voyage number, or none of them are needed in case there is an occurrence of SG2:RFF referring the visit id.	C	1	an..17	O
C220		MODE OF TRANSPORT Method of transport code or name. Code preferred.	C	1		R
	8067	Transport mode name code Code specifying the name of a mode of transport. UN Recommendation 19 - Codes for Modes of Transport. 1 Maritime	C		an..3	R
	8066	Transport mode name	C		an..17	X

C001	TRANSPORT MEANS	C	1	O	Code and/or name identifying the type of means of transport. Usage complemented in local document if mentioned in that document.
8179	Transport means description code	C	an..8	O	Code specifying the means of transport. UN Recommendation 28 - Code for Types of Means of Transport. The usage of the recommendation 28 is only for compatibility with SMDG proposal. However local codes may apply.
1131	Code list identification code	C	an..17	X	
3055	Code list responsible agency code	C	an..3	X	
8178	Transport means description	C	an..17	O	Free form description of the means of transport. Only for compatibility with SMDG proposal. It will not be processed by JUL system.
C040	CARRIER	C	1	O	Identification of a carrier by code and/or by name. Code preferred. Usage complemented in local document if mentioned in that document. SMDG proposal states that this element is Required. However, it seems that this is tightly connected to the user attribute of element 3127. An alternative perspective is in this MIG. This element should be Optional and occurs if either 3127 or 3126, or both, occur.
3127	Carrier identifier	C	an..17	O	To identify a carrier. Vessel operator's code.
1131	Code list identification code	C	an..17	O	Code identifying a user or association maintained code list.
3055	Code list responsible agency code	C	an..3	O	Code specifying the agency responsible for a code list. Refer to D.16A Data Element Dictionary for acceptable code values.
3126	Carrier name	C	an..35	O	Name of a carrier.
8101	TRANSIT DIRECTION INDICATOR CODE	C	1	an..3	X
C401	EXCESS TRANSPORTATION INFORMATION	C	1		X
					To provide details of reason for, and responsibility for, use of transportation other than normally utilized.
8457	Excess transportation reason code	M	an..3	X	Code specifying the reason for excess transportation.
8459	Excess transportation responsibility code	M	an..3	X	Code specifying the responsibility for excess transportation.
7130	Customer shipment authorisation identifier	C	an..17	X	To identify the authorisation to ship issued by the customer.
C222	TRANSPORT IDENTIFICATION	C	1	O	

Code and/or name identifying the means of transport.

Usage complemented in local document if mentioned in that document.

SMDG proposal states that this element is Dependent. However, it seems that this is tightly connect to the user attribute of element 8213.

An alternative perspective is in this MIG. This element should be Optional and occurs if either 8213 or 8212, or both, occur.

8213	Transport means identification name identifier	C	an..35	D
	Identifies the name of the transport means.			
	Identification of the means of transport by number.			
	Either this element or SG2:RFF must be used to specify a vessel identification, or none of them are needed in case there is an occurrence of SG2:RFF referring the visit id.			
1131	Code list identification code	C	an..17	O
	Code identifying a user or association maintained code list.			
	Only for compatibility with SMDG proposal. It will not be processed by JUL system.			
3055	Code list responsible agency code	C	an..3	X
8212	Transport means identification name	C	an..70	O
	Name identifying a means of transport.			
8453	Transport means nationality code	C	an..3	O
	Code specifying the nationality of a means of transport.			
	Flag of means of transport (ISO 3166 country code, 2-alpha).			
8281	TRANSPORT MEANS OWNERSHIP INDICATOR CODE	C	1 an..3	X
C003	POWER TYPE	C	1	X
	To specify the type of power.			
7041	Power type code	C	an..3	X
	Code indicating the type of power.			
1131	Code list identification code	C	an..17	X
	Code identifying a user or association maintained code list.			
3055	Code list responsible agency code	C	an..3	X
	Code specifying the agency responsible for a code list.			
7040	Power type description	C	an..17	X
	Description of the type of power.			

Segment: **RFF** Reference
Position: 00110
Group: Segment Group 2 (Transport Information) Conditional (Optional)
Level: 2
Usage: Conditional (Optional)
Max Use: 4
Purpose: A segment to provide a reference for the liner service, such as: - conference - marketing organization - syndicate - vessel sharing agreement

Dependency Notes:**Semantic Notes:****Comments:**

Notes: Usage complemented in local document if mentioned in that document.

Although this segment is marked as optional, in the JUL implementation this is the preferred way to identify a visit id (vessel call). The usage is to put this id in DE:1154 associated with qualifier 'ATZ' in 1153. This identification is provided by the JUL system.

Example: Leixões visit id PTLEI118001032

RFF+ATZ:PTLEI118001032'

Example: Additional voyage number 7199

RFF+VON:7199'

Data Element Summary

Data Element	Component Element	Name	Base Attributes		User Attributes
C506		REFERENCE	M	1	M
		Identification of a reference.			
	1153	Reference code qualifier	M	an..3	M
		Code qualifying a reference.			
		ATZ Ship's stay reference number Corresponding to the Visit Id.			
		MA Ship notice/manifest number Only for compatibility with SMDG proposal. It will not be processed by JUL system.			
		VM Vessel identifier Only for compatibility with SMDG proposal. It will not be processed by JUL system.			
		VON Voyage number			
	1154	Reference identifier	C	an..70	R
		Identifies a reference.			
		Visit id, if C506:1153 = 'ATZ'.			

Alternative (non vessel operator's) voyage number (if C506:1153 = 'VON') as present in the Port Authority System.

1156	Document line identifier	C	an..6	X
1056	Version identifier	C	an..9	X
1060	Revision identifier	C	an..6	X

Group: **LOC** Segment Group 3: Place/Location Identification
Position: 00120
Group: Segment Group 2 (Transport Information) Conditional (Optional)
Level: 2
Usage: Conditional (Optional)
Max Use: 3
Purpose: A segment group to indicate places and ports related to the main carriage stage.

Segment Summary

	Pos.	Seg.		Req.	Max.	Group:
	<u>No.</u>	<u>ID</u>	<u>Name</u>	<u>Des.</u>	<u>Use</u>	<u>Repeat</u>
M	00130	LOC	Place/Location Identification	M	1	
O	00140	DTM	Date/Time/Period	C	4	

Segment: **LOC** Place/Location Identification
Position: 00130 (Trigger Segment)
Group: Segment Group 3 (Place/Location Identification) Conditional (Optional)
Level: 2
Usage: Mandatory
Max Use: 1
Purpose: A segment to specify a location related to the main carriage stage such as place of arrival and place of departure.

Dependency Notes:**Semantic Notes:****Comments:****Notes:** Example: Port of loading Leixoes, North Container Terminal

LOC+9+PTLEI:139:6+TCN'

Data Element Summary

<u>Data Element</u>	<u>Component Element</u>	<u>Name</u>	<u>Base Attributes</u>		<u>User Attributes</u>
3227		LOCATION FUNCTION CODE QUALIFIER Code identifying the function of a location.	M	1 an..3	M
		9 Place of loading			
		11 Place of discharge			
		175 Activity location			
		<i>Only for compatibility with SMDG proposal. It will not be processed by JUL system.</i>			
C517		LOCATION IDENTIFICATION Identification of a location by code or name.	C	1	O
	3225	Location identifier To identify a location.	C	an..35	O
		UN Locode.			
	1131	Code list identification code Code identifying a user or association maintained code list.	C	an..17	O
	3055	Code list responsible agency code Code specifying the agency responsible for a code list. Refer to D.16A Data Element Dictionary for acceptable code values.	C	an..3	O
	3224	Location name Name of the location.	C	an..256	O
		<i>Only for compatibility with SMDG proposal. It will not be processed by JUL system.</i>			
C519		RELATED LOCATION ONE IDENTIFICATION Identification the first related location by code or name.	C	1	O
		Usage complemented in local document if mentioned in that document.			
	3223	First related location identifier	C	an..35	O

To identify a first related location.

Usage complemented in local document if mentioned in that document.

Use the codes for terminals/berths located in the port specified in DE:3225.

1131	Code list identification code	C	an..17	O
	Code identifying a user or association maintained code list.			
	Usage complemented in local document if mentioned in that document.			
3055	Code list responsible agency code	C	an..3	O
	Code specifying the agency responsible for a code list.			
	Usage complemented in local document if mentioned in that document.			
	Refer to D.16A Data Element Dictionary for acceptable code values.			
3222	First related location name	C	an..70	O
	Name of first related location.			
	<i>Only for compatibility with SMDG proposal. It will not be processed by JUL system.</i>			
C553	RELATED LOCATION TWO IDENTIFICATION	C	1	O
	Identification of second related location by code or name.			
	<i>Only for compatibility with SMDG proposal. It will not be processed by JUL system.</i>			
3233	Second related location identifier	C	an..35	O
	To identify a second related location.			
1131	Code list identification code	C	an..17	O
	Code identifying a user or association maintained code list.			
3055	Code list responsible agency code	C	an..3	O
	Code specifying the agency responsible for a code list.			
	Refer to D.16A Data Element Dictionary for acceptable code values.			
3232	Second related location name	C	an..70	O
	Name of the second related location.			
5479	RELATION CODE	C	1 an..3	X

Segment: **DTM** Date/Time/Period
Position: 00140
Group: Segment Group 3 (Place/Location Identification) Conditional (Optional)
Level: 3
Usage: Conditional (Optional)
Max Use: 4
Purpose: A segment to specify the date(s) and time(s) related to a location.

Dependency Notes:**Semantic Notes:****Comments:**

Notes: Example: Vessel estimated date/time of arrival was 2018/10/31 14:35

DTM+132:201810311435:203'

Data Element Summary

<u>Data Element</u>	<u>Component Element</u>	<u>Name</u>	<u>Base Attributes</u>		<u>User Attributes</u>
C507		DATE/TIME/PERIOD	M	1	M
		Date and/or time, or period relevant to the specified date/time/period type.			
	2005	Date or time or period function code qualifier	M	an..3	M
		Code qualifying the function of a date, time or period.			
		132 Transport means arrival date time, estimated			
		133 Transport means departure date/time, estimated			
		178 Transport means arrival date time, actual			
		<i>Only for compatibility with SMDG proposal. It will not be processed by JUL system.</i>			
		186 Transport means departure date/time, actual			
		<i>Only for compatibility with SMDG proposal. It will not be processed by JUL system.</i>			
	2380	Date or time or period text	C	an..35	O
		The value of a date, a date and time, a time or of a period in a specified representation.			
	2379	Date or time or period format code	C	an..3	O
		Code specifying the representation of a date, time or period.			
		203 CCYYMMDDHHMM			

Group: **NAD** Segment Group 4: Name and Address
Position: 00150
Group:
Level: 1
Usage: Mandatory
Max Use: 3
Purpose: A group of segments to identify a party and/or addresses and related contacts.
Notes: Usage complemented in local document if mentioned in that document.

This group is used to identify the entities related with the whole document. However, some of them may be stated at detail level (SG10). This will be signaled when needed.

It will be possible that the entity that sends the message, might not be the same that operates the terminal. It is advised to be sent this group twice, at least, in order to specify the message sender and the terminal operator.

Segment Group 5 given information related with the Contact Information is to be used only when NAD:3035 is 'TR'.

Message Sender, Message Receiver and Terminal Operator must always be sent.

Segment Summary

	Pos.	Seg.		Req.	Max.	Group:
	<u>No.</u>	<u>ID</u>	<u>Name</u>	<u>Des.</u>	<u>Use</u>	<u>Repeat</u>
M	00160	NAD	Name and Address	M	1	
	00170		Segment Group 5: Contact Information	C		1

Segment: **NAD** Name and Address
Position: 00160 (Trigger Segment)
Group: Segment Group 4 (Name and Address) Mandatory
Level: 1
Usage: Mandatory
Max Use: 1
Purpose: A segment to identify the party's name and address, and function, such as: - message recipient - message sender - ordering customer - ordering customer agent

Dependency Notes:**Semantic Notes:****Comments:**

Notes: Usage complemented in local document if mentioned in that document.

Whenever possible the entities are to be identified by their EORI. In Portugal the EORI id is composed by PT+[VAT number].

Example: Terminal operator identified by PT541495122.

NAD+TR+PT541495122'

Data Element Summary

<u>Data Element</u>	<u>Component Element</u>	<u>Name</u>	<u>Base Attributes</u>	<u>User Attributes</u>
3035		PARTY FUNCTION CODE QUALIFIER	M 1 an..3	M
		Code giving specific meaning to a party.		
	AG	Agent		
		Usage complemented in local document if mentioned in that document.		
		The entity responsible for the transport equipment or the general cargo shipment in the port.		
		The entity corresponds to the Sender in a Rail Consignment Note.		
	CA	Carrier		
		Only for compatibility with SMDG proposal. It will not be processed by JUL system.		
	CB	Customs broker		
		Only for compatibility with SMDG proposal. It will not be processed by JUL system.		
	CF	Container operator/lessee		
		Usage complemented in local document if mentioned in that document.		
	CN	Consignee		
		Usage complemented in local document if mentioned in that		

	document.
CPD	Charges payer at destination Only for compatibility with SMDG proposal. It will not be processed by JUL system.
CZ	Consignor Usage complemented in local document if mentioned in that document.
EX	Exporter Usage complemented in local document if mentioned in that document.
FW	Freight forwarder Only for compatibility with SMDG proposal. It will not be processed by JUL system.
GA	Road carrier Usage complemented in local document if mentioned in that document.
GT	Rail carrier Usage complemented in local document if mentioned in that document.
HA	Party which delivers consignments to the terminal Only for compatibility with SMDG proposal. It will not be processed by JUL system.
HR	Shipping line service Only for compatibility with SMDG proposal. It will not be processed by JUL system.
IM	Importer Usage complemented in local document if mentioned in that document.
MR	Message recipient Must always be sent.
MS	Document/message issuer/sender Must always be sent.
OY	Ordering customer Only for compatibility with SMDG proposal. It will not be processed by JUL system.
TR	Terminal operator Usage complemented in local document if mentioned in that document.
WPA	Weighting party Only for compatibility with SMDG proposal. It will not be processed by JUL system.

C082	PARTY IDENTIFICATION DETAILS	C	1	R
	Identification of a transaction party by code.			
3039	Party identifier	M	an..35	M
	Code specifying the identity of a party.			

Number corresponding to EORI of the entity, or another code mutually agreed between the parties.

When DE:3035 = 'MS' the value will be used in "Message Sender".

When DE:3035 = 'TR' the value will be used in "Warehouse Keeper".

1131	Code list identification code	C	an..17	O
	Code identifying a user or association maintained code list.			
	72 Container Terminal			
	Only for compatibility with SMDG proposal. It will not be processed by JUL system.			
	160 Party identification			
	172 Carriers			
3055	Code list responsible agency code	C	an..3	O
	Code specifying the agency responsible for a code list.			
	Only for compatibility with SMDG proposal. It will not be processed by JUL system.			
	Refer to D.16A Data Element Dictionary for acceptable code values.			
C058	NAME AND ADDRESS	C	1	O
	Unstructured name and address: one to five lines.			
	Only for compatibility with SMDG proposal. It will not be processed by JUL system.			
3124	Name and address description	M	an..35	M
	Free form description of a name and address line.			
3124	Name and address description	C	an..35	O
	Free form description of a name and address line.			
3124	Name and address description	C	an..35	O
	Free form description of a name and address line.			
3124	Name and address description	C	an..35	O
	Free form description of a name and address line.			
3124	Name and address description	C	an..35	O
	Free form description of a name and address line.			
C080	PARTY NAME	C	1	O
	Identification of a transaction party by name, one to five lines. Party name may be formatted.			
	Only for compatibility with SMDG proposal. It will not be processed by JUL system.			
3036	Party name	M	an..70	M
	Name of a party.			
3036	Party name	C	an..70	X
3036	Party name	C	an..70	X
3036	Party name	C	an..70	X

	3036	Party name	C	an..70	X
	3045	Party name format code	C	an..3	X
C059		STREET	C	1	O
		Street address and/or PO Box number in a structured address: one to four lines. Only for compatibility with SMDG proposal. It will not be processed by JUL system.			
	3042	Street and number or post office box identifier	M	an..35	M
		To identify a street and number and/or Post Office box number.			
	3042	Street and number or post office box identifier	C	an..35	O
		To identify a street and number and/or Post Office box number.			
	3042	Street and number or post office box identifier	C	an..35	O
		To identify a street and number and/or Post Office box number.			
	3042	Street and number or post office box identifier	C	an..35	X
3164		CITY NAME	C	1 an..35	O
		Name of a city. Only for compatibility with SMDG proposal. It will not be processed by JUL system.			
C819		COUNTRY SUBDIVISION DETAILS	C	1	O
		To specify a country subdivision, such as state, canton, county, prefecture. Only for compatibility with SMDG proposal. It will not be processed by JUL system.			
	3229	Country subdivision identifier	C	an..9	O
		To identify a country subdivision, such as state, canton, county, prefecture.			
	1131	Code list identification code	C	an..17	O
		Code identifying a user or association maintained code list.			
	3055	Code list responsible agency code	C	an..3	O
		Code specifying the agency responsible for a code list. Refer to D.16A Data Element Dictionary for acceptable code values.			
	3228	Country subdivision name	C	an..70	O
		Name of a country subdivision, such as state, canton, county, prefecture.			
3251		POSTAL IDENTIFICATION CODE	C	1 an..17	O
		Code specifying the postal zone or address. Only for compatibility with SMDG proposal. It will not be processed by JUL system.			
3207		COUNTRY IDENTIFIER	C	1 an..3	O
		Identification of the name of the country or other geographical entity as defined in ISO 3166-1 and UN/ECE Recommendation 3. ISO 3166 Country Code, 2-Alpha.			

Group: **CTA** Segment Group 5: Contact Information
Position: 00170
Group: Segment Group 4 (Name and Address) Mandatory
Level: 2
Usage: Conditional (Optional)
Max Use: 1
Purpose: A group of segments to identify a contact and its communications related to the party.
Notes: Usage complemented in local document if mentioned in that document.
 Use when NAD:3035 is 'TR' to provide contact information of the person or department related with the report expressed in the message.

Segment Summary

	Pos.	Seg.		Req.	Max.	Group:
	<u>No.</u>	<u>ID</u>	<u>Name</u>	<u>Des.</u>	<u>Use</u>	<u>Repeat</u>
M	00180	CTA	Contact Information	M	1	
R	00190	COM	Communication Contact	C	4	

Segment: **CTA Contact Information**
Position: 00180 (Trigger Segment)
Group: Segment Group 5 (Contact Information) Conditional (Optional)
Level: 2
Usage: Mandatory
Max Use: 1
Purpose: A segment to identify a person or department of a message sender and/or message recipient, such as: - information contact

Dependency Notes:**Semantic Notes:****Comments:****Notes:** Example: Contact Mr. Rui Silva.

CTA+IC+:RUI SILVA'

Data Element Summary

<u>Data Element</u>	<u>Component Element</u>	<u>Name</u>	<u>Base Attributes</u>	<u>User Attributes</u>
3139		CONTACT FUNCTION CODE Code specifying the function of a contact (e.g. department or person). BN Certification contact Weighing responsible, in case NAD:3035 = 'WPA'. Only for compatibility with SMDG proposal. It will not be processed by JUL system.	C 1 an..3	R
C056		CONTACT DETAILS Code and/or name of a contact such as a department or employee. Code preferred.	C 1	R
	3413	Contact identifier	C an..17	X
	3412	Contact name Name of a contact, such as a department or employee. Contact name, in case DE:3139 = 'IC'. Department/Person responsible for obtaining a transport equipment verified gross mass (weight), in case DE:3139 = 'BN'.	C an..256	R

Segment: **COM** **Communication Contact**
Position: 00190
Group: Segment Group 5 (Contact Information) Conditional (Optional)
Level: 3
Usage: Conditional (Required)
Max Use: 4
Purpose: A segment to identify a communication number of a person or department to whom communication should be directed.

Dependency Notes:**Semantic Notes:****Comments:**

Notes: Example: Contact by phone number 229390700.

COM+229390700:TE'

Example: Contact by email jose.silva@mybusiness.com

COM+JOSE.SILVA AT MYBUSINESS.COM:EM'

Data Element Summary

<u>Data Element</u>	<u>Component Element</u>	<u>Name</u>	<u>Base Attributes</u>		<u>User Attributes</u>
C076		COMMUNICATION CONTACT	M	3	M
		Communication number of a department or employee in a specified channel.			
	3148	Communication address identifier	M	an..512	M
		To identify a communication address.			
	3155	Communication means type code	M	an..3	M
		Code specifying the type of communication address.			
		AL Cellular phone			
		EM Electronic mail			
		FX Telefax			
		TE Telephone			
		TL Telex			
		Only for compatibility with SMDG proposal. It will not be processed by JUL system.			
		XF X.400 address			
		Only for compatibility with SMDG proposal. It will not be processed by JUL system.			

Group: **GID** Segment Group 6: Goods Item Details
Position: 00200
Group:
Level: 1
Usage: Conditional (Dependent)
Max Use: 999
Purpose: A group of segments to describe the goods items (to be) stuffed in or (to be) stripped from the containers.
Notes: Only for backward compability, this segment group is Optional.

It is used to declare the presence of dangerous goods identified in SG8 (DGS) inside the transport equipment identified in segment SGP.

Usage complemented in local document if mentioned in that document.

Segment Summary

	Pos.	Seg.		Req.	Max.	Group:
	<u>No.</u>	<u>ID</u>	<u>Name</u>	<u>Des.</u>	<u>Use</u>	<u>Repeat</u>
M	00210	GID	Goods Item Details	M	1	
O	00290	SGP	Split Goods Placement	C	999	
	00300		Segment Group 8: Dangerous Goods	C		99

Segment: **GID Goods Item Details**
Position: 00210 (Trigger Segment)
Group: Segment Group 6 (Goods Item Details) Conditional (Dependent)
Level: 1
Usage: Mandatory
Max Use: 1
Purpose: A segment to identify a goods item (to be) stuffed in or (to be) stripped from the containers.

Dependency Notes:**Semantic Notes:****Comments:**

Notes: Example: 7th dangerous goods item in the list.

GID+7'

Data Element Summary

<u>Data Element</u>	<u>Component Element</u>	<u>Name</u>	<u>Base Attributes</u>			<u>User Attributes</u>
1496		GOODS ITEM NUMBER To specify a goods item within a consignment.	C	1	an..6	O
C213		NUMBER AND TYPE OF PACKAGES Number and type of individual parts of a shipment.	C	1		X
	7224	Package quantity To specify the number of packages.	C		n..8	X
	7065	Package type description code Code specifying the type of package.	C		an..17	X
	1131	Code list identification code Code identifying a user or association maintained code list.	C		an..17	X
	3055	Code list responsible agency code Code specifying the agency responsible for a code list.	C		an..3	X
	7064	Type of packages Description of the form in which goods are presented.	C		an..35	X
	7233	Packaging related description code Code specifying information related to packaging.	C		an..3	X
C213		NUMBER AND TYPE OF PACKAGES Number and type of individual parts of a shipment.	C	1		X
	7224	Package quantity To specify the number of packages.	C		n..8	X
	7065	Package type description code Code specifying the type of package.	C		an..17	X
	1131	Code list identification code Code identifying a user or association maintained code list.	C		an..17	X

	3055	Code list responsible agency code	C	an..3	X
		Code specifying the agency responsible for a code list.			
	7064	Type of packages	C	an..35	X
		Description of the form in which goods are presented.			
	7233	Packaging related description code	C	an..3	X
		Code specifying information related to packaging.			
C213		NUMBER AND TYPE OF PACKAGES	C	1	X
		Number and type of individual parts of a shipment.			
	7224	Package quantity	C	n..8	X
		To specify the number of packages.			
	7065	Package type description code	C	an..17	X
		Code specifying the type of package.			
	1131	Code list identification code	C	an..17	X
		Code identifying a user or association maintained code list.			
	3055	Code list responsible agency code	C	an..3	X
		Code specifying the agency responsible for a code list.			
	7064	Type of packages	C	an..35	X
		Description of the form in which goods are presented.			
	7233	Packaging related description code	C	an..3	X
		Code specifying information related to packaging.			
C213		NUMBER AND TYPE OF PACKAGES	C	1	X
		Number and type of individual parts of a shipment.			
	7224	Package quantity	C	n..8	X
		To specify the number of packages.			
	7065	Package type description code	C	an..17	X
		Code specifying the type of package.			
	1131	Code list identification code	C	an..17	X
		Code identifying a user or association maintained code list.			
	3055	Code list responsible agency code	C	an..3	X
		Code specifying the agency responsible for a code list.			
	7064	Type of packages	C	an..35	X
		Description of the form in which goods are presented.			
	7233	Packaging related description code	C	an..3	X
		Code specifying information related to packaging.			
C213		NUMBER AND TYPE OF PACKAGES	C	1	X
		Number and type of individual parts of a shipment.			
	7224	Package quantity	C	n..8	X
		To specify the number of packages.			
	7065	Package type description code	C	an..17	X
		Code specifying the type of package.			

1131	Code list identification code	C	an..17	X
	Code identifying a user or association maintained code list.			
3055	Code list responsible agency code	C	an..3	X
	Code specifying the agency responsible for a code list.			
7064	Type of packages	C	an..35	X
	Description of the form in which goods are presented.			
7233	Packaging related description code	C	an..3	X
	Code specifying information related to packaging.			

Segment: **SGP** Split Goods Placement
Position: 00290
Group: Segment Group 6 (Goods Item Details) Conditional (Dependent)
Level: 2
Usage: Conditional (Optional)
Max Use: 999
Purpose: A segment to identify a container in which goods are transported.

Dependency Notes:**Semantic Notes:****Comments:**

Notes: Example: Dangerous goods are inside container CLHU3420210.

SGP+CLHU3420210'

Data Element Summary

<u>Data Element</u>	<u>Component Element</u>	<u>Name</u>	<u>Base Attributes</u>		<u>User Attributes</u>
C237		EQUIPMENT IDENTIFICATION Marks (letters/numbers) identifying equipment.	M	1	M
	8260	Equipment identifier To identify equipment.	C	an..17	R
	1131	Code list identification code	C	an..17	X
	3055	Code list responsible agency code	C	an..3	X
	3207	Country identifier	C	an..3	X
7224		PACKAGE QUANTITY	C	1 n..8	X

Group: **DGS** Segment Group 8: Dangerous Goods

Position: 00300

Group: Segment Group 6 (Goods Item Details) Conditional (Dependent)

Level: 2

Usage: Conditional (Required)

Max Use: 99

Purpose: A group of segments to specify dangerous goods details related to the goods item.
One goods item may be in different dangerous goods classes.

Notes: This group identifies the dangerous goods inside the transport equipment identified in the SG6:SGP occurrences.

Segment Summary

	Pos.	Seg.		Req.	Max.	Group:
	No.	ID	Name	Des.	Use	Repeat
M	00310	DGS	Dangerous Goods	M	1	
O	00320	FTX	Free Text	C	1	

Segment: **DGS** Dangerous Goods
Position: 00310 (Trigger Segment)
Group: Segment Group 8 (Dangerous Goods) Conditional (Required)
Level: 2
Usage: Mandatory
Max Use: 1
Purpose: A segment to indicate the dangerous goods regulations for the corresponding mode of transport, class of dangerous goods, additional dangerous goods code, UN -number and shipment flash point.

Dependency Notes:**Semantic Notes:****Comments:**

Notes: Example: Goods of IMO class 3, UMDG 1300.

DGS+IMD+3+1300'

Data Element Summary

<u>Data Element</u>	<u>Component Element</u>	<u>Name</u>	<u>Base Attributes</u>		<u>User Attributes</u>
8273		DANGEROUS GOODS REGULATIONS CODE Code specifying a dangerous goods regulation. IMD IMO IMDG code	C	1 an..3	R
C205		HAZARD CODE The identification of the dangerous goods in code.	C	1	R
	8351	Hazard identification code Code identifying a hazard. Dangerous goods code (class IMO).	M	an..7	M
	8078	Additional hazard classification identifier	C	an..7	X
	8092	Hazard code version identifier	C	an..10	X
C234		UNDG INFORMATION Information on dangerous goods, taken from the United Nations Dangerous Goods classification.	C	1	R
	7124	United Nations Dangerous Goods (UNDG) identifier The unique serial number assigned within the United Nations to substances and articles contained in a list of the dangerous goods most commonly carried.	C	n4	O
	7088	Dangerous goods flashpoint description	C	an..8	X
C223		DANGEROUS GOODS SHIPMENT FLASHPOINT Temperature at which a vapor can be ignited as per ISO 1523/73.	C	1	X
	7106	Shipment flashpoint degree To specify the value of the flashpoint of a shipment.	C	n3	X
	6411	Measurement unit code	C	an..8	X

	Code specifying the unit of measurement.				
8339	PACKAGING DANGER LEVEL CODE	C	1	an..3	O
	Code specifying the level of danger for which the packaging must cater. Refer to D.16A Data Element Dictionary for acceptable code values.				
8364	EMERGENCY PROCEDURE FOR SHIPS IDENTIFIER	C	1	an..8	X
8410	HAZARD MEDICAL FIRST AID GUIDE IDENTIFIER	C	1	an..4	X
8126	TRANSPORT EMERGENCY CARD IDENTIFIER	C	1	an..10	X
C235	HAZARD IDENTIFICATION PLACARD DETAILS	C	1		X
	These numbers appear on the hazard identification placard required on the means of transport.				
8158	Orange hazard placard upper part identifier	C		an..4	X
	To specify the identity number for the upper part of the orange hazard placard required on the means of transport.				
8186	Orange hazard placard lower part identifier	C		an4	X
	To specify the identity number for the lower part of the orange hazard placard required on the means of transport.				
C236	DANGEROUS GOODS LABEL	C	1		X
	Markings identifying the type of hazardous goods and similar information.				
8246	Dangerous goods marking identifier	C		an..4	X
	To identify the marking of dangerous goods.				
8246	Dangerous goods marking identifier	C		an..4	X
	To identify the marking of dangerous goods.				
8246	Dangerous goods marking identifier	C		an..4	X
	To identify the marking of dangerous goods.				
8246	Dangerous goods marking identifier	C		an..4	X
	To identify the marking of dangerous goods.				
8255	PACKING INSTRUCTION TYPE CODE	C	1	an..3	X
8179	TRANSPORT MEANS DESCRIPTION CODE	C	1	an..8	X
8211	HAZARDOUS CARGO TRANSPORT AUTHORISATION CODE	C	1	an..3	X
C289	TUNNEL RESTRICTION	C	1		X
	To specify a restriction for transport through tunnels.				
8461	Tunnel Restriction Code	C		an..6	X
	A code indicating a restriction for transport through tunnels.				
1131	Code list identification code	C		an..17	X
	Code identifying a user or association maintained code list.				
3055	Code list responsible agency code	C		an..3	X

Code specifying the agency responsible for a code list.

Segment: **FTX** Free Text
Position: 00320
Group: Segment Group 8 (Dangerous Goods) Conditional (Required)
Level: 3
Usage: Conditional (Optional)
Max Use: 1
Purpose: A segment to specify supplementary details related to the dangerous goods, such as:
- dangerous goods technical name - dangerous goods additional information

Dependency Notes:**Semantic Notes:****Comments:****Notes:** Example: CORROSIVE LIQUID, BASIC, ORGANIC, N.O.S.

FTX+AAD+++CORROSIVE LIQUID, BASIC, ORGANIC, N.O.S.!

Data Element Summary

<u>Data Element</u>	<u>Component Element</u>	<u>Name</u>	<u>Base Attributes</u>			<u>User Attributes</u>
4451		TEXT SUBJECT CODE QUALIFIER Code qualifying the subject of the text.	M	1	an..3	M
	AAD	Dangerous goods technical name				
4453		FREE TEXT FUNCTION CODE	C	1	an..3	X
C107		TEXT REFERENCE Coded reference to a standard text and its source.	C	1		X
	4441	Free text description code Code specifying free form text.	M		an..17	X
	1131	Code list identification code Code identifying a user or association maintained code list.	C		an..17	X
	3055	Code list responsible agency code Code specifying the agency responsible for a code list.	C		an..3	X
C108		TEXT LITERAL Free text; one to five lines.	C	1		O
	4440	Free text Free form text.	M		an..512	M
	4440	Free text Free form text.	C		an..512	O
	4440	Free text Free form text.	C		an..512	O
	4440	Free text Free form text.	C		an..512	O
	4440	Free text Free form text.	C		an..512	O

3453	LANGUAGE NAME CODE	C	1	an..3	X
4447	FREE TEXT FORMAT CODE	C	1	an..3	X

Group:	EQD Segment Group 10: Equipment Details
Position:	00370
Group:	
Level:	1
Usage:	Mandatory
Max Use:	9999
Purpose:	A group of segments to specify containers in which goods are transported.
Notes:	<p>If the group is to report movements of transport equipment, then the equipment must be identified and its tare must be provided. If it is full then information about the seal must be provided. Also in element EQD:8155 and if the equipment is a container, the container ISO type according to ISO 6346 (2nd and 3rd editions) is sent. In this standard the first number of this codification provides the container length. If unknown then use the code defined for element EQD:8155 by UN/EDIFACT.</p> <p>The group is also to report movements of general cargo (EQD:8053 = 'BB').</p> <p>In this case the group should contain information on a general cargo shipment of goods (shipment hereafter to simplify). This shipment can be identified by the transport document id only (in segment RFF), or complemented by a reference number provided by the terminal operator (also in segment RFF having RFF:1153 = 'UCN').</p> <p>Complementary to the weight (in segment MEA), information on the number of volumes should be provided (in segment FTX with FTX:4451 = 'PAC'), considering that bulk cargo count as 1 volume.</p> <p>Additionally data on Marks & Numbers must be provided. However, it is possible that in a single shipment, several Marks & Numbers may exist. Due to CODECO message structure definition, comparing with the possible number of different Marks & Numbers, the following usage was defined.</p> <p>Assuming a scenario where there are 2 shipments, but belonging to the same Bill of Lading, with id OPT51228, discharged from the means of transport (import). One shipment with total weight 350 Kg, identified by 00001 (id provided by the terminal operator), has 2 volumes. One volume is marked with VOL32, the other volume is marked with VOL47. The other shipment, with total weight of 410 Kg, identified by 00002 (id provided by the terminal operator), has 3 volumes: DD78, FF36 and LL14.</p> <p>One issue here is that the weight of each volume may not be available.</p> <p>Assuming that these shipments are going to leave the port by truck, these Gate-Out movements must be reported. However, how this is done depends on the method the shipments were distributed by the trucks, and the number of trucks involved. The alternatives are multiple, but they can be grouped in a finite set.</p> <p>Considering the sum of the total weight of both shipments, on one end of the range of solutions is to have both shipments carried by the same truck. Another alternative is to have each shipment spread over several trucks, but each truck carrying</p>

volumes from just one shipment. On the other end of the range is to have both shipments spread over several trucks and each truck (at least some of them) carrying volumes from both shipments.

Leaving on the side the terminal operations' characteristics of each alternative, each one implies with the way the Gate-Out movement is reported. However, this MIG accomodates some flexibility to represent the information of each alternative. It is a sender's option.

As an example, it is assumed that each shipment moves out of the port by road in its own set of trucks from the same transport company: the 2 volume shipment in one truck, the 3 volume shipment in two trucks. It is also assumed that each truck is weighted before leaving the port (for simplicity truck tare is ignored). However the weight could be obtained based on the each declared volume weight. Finally it is assumed that one message is being reported for each pair shipment/truck.

This CODECO MIG usage for this exemple scenario will be the following. Send one message for each pair shipment/truck. But when multiple volumes (or different Marks & Numbers) are present in the same truck, then send one occurrence of SG10 for each Marks & Numbers in stake. In each these occurrences, use segment RFF to identify the Bill of Lading (or other transport document), the complementary reference provided by the terminal operator and the Marks & Numbers. Also, in the occurrence of segment MEA, the weight obtained after weighting the truck should be present, and in segment FTX (with FTX:4451 = 'PAC') the number of volumes on the truck.

For the described scenario, a possible sequence of messages and sequence of segments could be the following:

==> MESSAGE 1: shipment 00001, 2 volumes

```

...
EQD+BB+++3+6'
RFF+BM:OPT51228'
RFF+UCN:00001'
RFF+ACH:VOL32'
...
MEA+AAE+AAB+KGM:350'
...
FTX+PAC+++1:...'
...
EQD+BB+++3+6'
RFF+BM:OPT51228'
RFF+UCN:00001'
RFF+ACH:VOL47'
...
MEA+AAE+AAB+KGM:350'
...
FTX+PAC+++1:...'
...

```

TDT+30++3++::SARDAO+++35-AB-65:146'

...

==> MESSAGE 2: shipment 0002, 1 volume

...

EQD+BB++++3+6'

RFF+BM:OPT51228'

RFF+UCN:00002'

RFF+ACH:DD78'

...

MEA+AAE+AAB+KGM:270'

...

FTX+PAC+++3:...'

...

TDT+30++3++::SARDAO+++87-CH-45:146'

...

==> MESSAGE 3: shipment 0002, 2 volumes

...

EQD+BB++++3+6'

RFF+BM:OPT51228'

RFF+UCN:00002'

RFF+ACH:FF36'

...

MEA+AAE+AAB+KGM:140'

...

FTX+PAC+++2:...'

...

TDT+30++3++::SARDAO+++62-LM-71:146'

...

EQD+BB++++3+6'

RFF+BM:OPT51228'

RFF+UCN:00002'

RFF+ACH:LL14'

...

MEA+AAE+AAB+KGM:140'

...

FTX+PAC+++2:...'

...

TDT+30++3++::SARDAO+++62-LM-71:146'

...

This structure usage allows the receiver to reproduce the set of Marks & Numbers of each particular shipment, even if it identified only by Bill of Lading (or other transport document).

If there are no marks associated with the shipment, then report "No Marks".

Segment Summary

	Pos.	Seg.		Req.	Max.	Group:
	<u>No.</u>	<u>ID</u>	<u>Name</u>	<u>Des.</u>	<u>Use</u>	<u>Repeat</u>
M	00380	EQD	Equipment Details	M	1	
O	00390	RFF	Reference	C	4	
O	00400	TMD	Transport Movement Details	C	9	
R	00410	DTM	Date/Time/Period	C	2	
R	00420	LOC	Place/Location Identification	C	4	
R	00430	MEA	Measurements	C	3	
O	00440	DIM	Dimensions	C	5	
D	00450	SEL	Seal Number	C	7	
D	00460	FTX	Free Text	C	8	
D	00480	EQA	Attached Equipment	C	1	
O	00500	HAN	Handling Instructions	C	3	
	00510		Segment Group 11: Damage	C		9
	00540		Segment Group 12: Transport Information	C		2
O	00610	NAD	Name and Address	C	9	
	00620		Segment Group 14: Dangerous Goods	C		9
	00690		Segment Group 16: Temperature	C		1

Segment: **EQD** **Equipment Details**
Position: 00380 (Trigger Segment)
Group: Segment Group 10 (Equipment Details) Mandatory
Level: 1
Usage: Mandatory
Max Use: 1
Purpose: A segment to specify a container, container size and type used in the transport, and full/empty indication.

Dependency Notes:**Semantic Notes:****Comments:**

Notes: This segment is to identify the transport equipment, its size/type, its status and if it is full or empty.

It is also used to indicate that the following segments in the group occurrence are related with general cargo (DE:8053 = 'BB').

If the transport equipment is other than an ISO container then DE:8155 shall have the proper value from the EDIFACT code list associated with this element.

If the transport equipment is an ISO container then DE:8155 shall have the ISO type according standard ISO 6346. If this code is unknown then place the proper value from EDIFACT code list associated with this element.

Example: Container CGTU 200311/5, 20 ft, export/load, full.

EQD+CN+CGTU2003115+21:102:6++2+5'

Example: Container GSTU 000029/0, 40 ft General purpose (ISO 40GP), transhipped, empty

EQD+CN+GSTU0000290+40GP:102:5++6+4'

Example: Trailer Z-53791, import/unload, full

EQD+TE+Z53791+14:102:6++3+5'

Example: group related with general cargo being imported

EQD+BB++++3+6'

Data Element Summary

Data Element	Component Element	Name	Base Attributes			User Attributes
8053		EQUIPMENT TYPE CODE QUALIFIER	M	1	an..3	M
		Code qualifying a type of equipment.				
		BB				
		Un-containerized cargo (breakbulk)				
		This code is to be used when reporting general cargo shipment				

					movement.
	BPP	Truck and trailer combination being transported			It will be processed like 'TE'.
					Only for compatibility with SMDG proposal. It will not be processed by JUL system.
	BR	Barge			
	CH	Chassis			It will be treated like 'TE'.
					Only for compatibility with SMDG proposal.
	CN	Container			
	PA	Pallet			
	PL	Platform			
	RF	Flat car			Applicable when the SG10 is used to identify empty wagon.
	RG	Reefer generator			Only for compatibility with SMDG proposal. It will not be processed by JUL system.
	RR	Rail car			
	SW	Swap body			It will be treated like 'CN'.
					Only for compatibility with SMDG proposal. It will not be processed by JUL system.
	TE	Trailer			
C237	EQUIPMENT IDENTIFICATION		C	1	D
	Marks (letters/numbers) identifying equipment.				Usage complemented in local document if mentioned in that document.
					This element is not to be used when reporting general cargo (DE:8053 = 'BB').
8260	Equipment identifier		C	an..17	R
	To identify equipment.				Usage complemented in local document if mentioned in that document.
					<i>The value will be used in "Identification" element in message SeaWarehouseKeeperContainerMovement.</i>
1131	Code list identification code		C	an..17	X
3055	Code list responsible agency code		C	an..3	X
3207	Country identifier		C	an..3	X
C224	EQUIPMENT SIZE AND TYPE		C	1	D
	Code and or name identifying size and type of equipment. Code preferred.				This element is not to be used when reporting general cargo shipment (DE:8053 = 'BB') or empty wagon (DE:8053 in {'RF', 'RR'} and DE:8169 = '4').
8155	Equipment size and type description code		C	an..10	R

Code specifying the size and type of equipment.

In case of ISO container equipment (DE:8053 = 'CN') and if its ISO type is known then send the Size/Type information according to ISO 6346 (2nd or 3rd edition).

Otherwise use UN/EDIFACT code list for Data Element 8155.

*The value will be used in "Type" element in message
SeaWarehouseKeeperContainerMovement.*

*If EQD:8053 = 'CN' or treated like 'CN', then the value is the concatenation of
'CN' with ISO type present in DE:8155.*

If EQD:8053 = 'TE' or treated like 'TE', then the value is 'OUTE'.

Otherwise the element should have 'OUBPP'.

Refer to D.16A Data Element Dictionary for acceptable code values.

1131	Code list identification code	C	an..17	R
	Code identifying a user or association maintained code list.			
	102 Size and type			
3055	Code list responsible agency code	C	an..3	R
	Code specifying the agency responsible for a code list.			
	5 ISO (International Organization for Standardization)			
	6 UN/ECE (United Nations - Economic Commission for Europe)			
8154	Equipment size and type description	C	an..35	O
	Free form description of the size and type of equipment.			
	Only for compatibility with SMDG proposal. It will not be processed by JUL system.			
8077	EQUIPMENT SUPPLIER CODE	C	1 an..3	O
	Code specifying the party that is the supplier of the equipment.			
	Only for compatibility with SMDG proposal. It will not be processed by JUL system.			
8249	EQUIPMENT STATUS CODE	C	1 an..3	R
	Code specifying the status of equipment.			

The value will be used in "Transshipment" element.

If DE:8249 = '6' then the value is "Yes". Otherwise is "No".

1	Continental
	Only for compatibility with SMDG proposal. It will not be processed by JUL system.
2	Export
3	Import
6	Transshipment

Only for compatibility with SMDG proposal. It will not be processed by JUL system.

7 Shortlanded

*If the equipment or goods item has not been previously reported from a provisional perspective in a SeaWarehouseKeeper*Movement, then shortlanded equipment or goods will not be reported to Customs in the context of Warehouse Depositor.*

*However, if it has been reported from a provisional perspective in a SeaWarehouseKeeper*Movement, then it should be removed from that document.*

8 Overlanded

It will be treated like '3'.

10 Positioning

Only for compatibility with SMDG proposal. It will not be processed by JUL system.

11 Delivery

Only for compatibility with SMDG proposal. It will not be processed by JUL system.

12 Redelivery

Only for compatibility with SMDG proposal. It will not be processed by JUL system.

13 Repair

Only for compatibility with SMDG proposal. It will not be processed by JUL system.

8169 FULL OR EMPTY INDICATOR CODE C 1 an..3 R
Code indicating whether an object is full or empty.

The value will be used to infer the value in "Empty Full" element.

4 Empty

Use "Empty".

5 Full

Use "Full".

6 No volume available

To be used in case of general cargo (EQD:8053 = 'BB').

4233 MARKING INSTRUCTIONS CODE C 1 an..3 X

Segment: **RFF** Reference
Position: 00390
Group: Segment Group 10 (Equipment Details) Mandatory
Level: 2
Usage: Conditional (Optional)
Max Use: 4
Purpose: A segment to specify the identifying number associated with the container, such as:
- container sequence number - booking reference number (sea)

Dependency Notes:
Semantic Notes:
Comments:
Notes: Usage complemented in local document if mentioned in that document.

If DE:1153 = 'BM' then the segment is referring the Bill of Lading identification (id). Although not the only transport document used in the business it is the most common. This is particular important when the group is referring to general cargo shipment since the transport document id is needed to identify the shipment. For this reason one occurrence of this segment with DE:1153 = 'BM' is required when EQD:8053 = 'BB'.

If DE:1153 = 'UCN' then the segment is referring a unique identification provided by the terminal operator in the context of general cargo movement (EQD:8053 = 'BB'). This number provides complementary data to identify the shipment, together with the transport document identification, given in another occurrence of this segment.

If DE:1153 = 'ACH' then the segment is referring the Marks & Numbers of a shipment. It must be send if EQD:8053 = 'BB'.

If DE:1153 = 'BN' then the segment is referring to a shipping line/agent booking number/id. Optional.

This reference refers to documents and not to messages.

Example: Booking number NB/0123/03.

RFF+BN:NB/0123/03'

Example: Entrance document 2000/7256.

RFF+ER:2000/7256'

The codes signaled in DE:1153 will be used to infer the value to put in element "Type" in element "CustomsDocument".

Data Element Summary

<u>Data Element</u>	<u>Component Element Name</u>	<u>Base Attributes</u>	<u>User Attributes</u>
---------------------	-------------------------------	------------------------	------------------------

C506	REFERENCE	M	1	M
	Identification of a reference.			
1153	Reference code qualifier	M	an..3	M
	Code qualifying a reference.			
	AAE	Goods declaration number Only for compatibility with SMDG proposal. It will not be processed by JUL system.		
	AAO	Consignment identifier, consignee assigned Only for compatibility with SMDG proposal. It will not be processed by JUL system.		
	AA Y	Carrier's agent reference number Only for compatibility with SMDG proposal. It will not be processed by JUL system.		
	ABT	Goods declaration document identifier, Customs Only for compatibility with SMDG proposal. It will not be processed by JUL system.		
	ABZ	Vehicle licence number Only for compatibility with SMDG proposal. It will not be processed by JUL system.		
	ACD	Additional reference number Only for compatibility with SMDG proposal. It will not be processed by JUL system.		
	ACH	Packaging unit identification Use this qualifier when the value provides the Marks & Numbers in a general cargo shipment situation (EQD:8053 = 'BB', see SG10 (EQD) notes).		
		<i>The several values that may appear due to several occurrences of SG10(EQD), see notes on the usage of SG10, related with the same general cargo shipment, will be concatenated and placed in element 'Marks And Numbers' in message SeaWarehouseKeeperCargoMovement.</i>		
	ADO	Container work order reference number		
	AEW	Empty container bill number Document of Transport. Only applied for empty containers being repositioned.		
	AHI	Transport contract reference number		
	AKB	Container prefix Only for compatibility with SMDG proposal. It will not be processed by JUL system.		
	AKG	Vehicle Identification Number (VIN) Only for compatibility with SMDG proposal. It will not be processed by JUL system.		
	ARJ	Personal identity card number Only for compatibility with SMDG proposal. It will not be processed by JUL system.		

ATW	Flat rack container bundle identification number Only for compatibility with SMDG proposal. It will not be processed by JUL system.
AUA	Place of positioning reference Only for compatibility with SMDG proposal. It will not be processed by JUL system.
BM	Bill of lading number
BN	Consignment identifier, carrier assigned
BST	Blockstow reference Temporary code.
BT	Batch number/lot number
CN	Carrier's reference number Only for compatibility with SMDG proposal. It will not be processed by JUL system.
CT	Contract number Only for compatibility with SMDG proposal. It will not be processed by JUL system.
CU	Consignment identifier, consignor assigned Only for compatibility with SMDG proposal. It will not be processed by JUL system.
CV	Container operators reference number Only for compatibility with SMDG proposal. It will not be processed by JUL system.
DR	Dock receipt number
DSO	Carrier's reference number Usage complemented in local document if mentioned in that document.
EQ	Equipment number To be used in the event that an alternative equipment number is to be quoted in addition to the number in the EQD. Only for compatibility with SMDG proposal. It will not be processed by JUL system.
ER	Container/equipment receipt number
MKS	Marks and numbers Only for compatibility with SMDG proposal. It will be treated like 'ACH'.
RE	Release number Only for compatibility with SMDG proposal. It will not be processed by JUL system.
SQ	Equipment sequence number Only for compatibility with SMDG proposal. It will not be processed by JUL system.
TF	Transfer number Only for compatibility with SMDG proposal. It will not be processed by JUL system.
UCN	Unique consignment reference number

		Advised if EQD:8053 = 'BB'.
VGR	Transport equipment gross mass verification reference number	Only for compatibility with SMDG proposal. It will not be processed by JUL system.
VM	Vessel identifier	
VN	Order number (vendor)	Only for compatibility with SMDG proposal. It will not be processed by JUL system.
VON	Voyage number	
VOR	Transport equipment gross mass verification order reference	Only for compatibility with SMDG proposal. It will not be processed by JUL system.
VT	Motor vehicle identification number	
Z01	Queue	

1154 Reference identifier C an..70 R

Identifies a reference.

Usage complemented in local document if mentioned in that document.

The value will be used in "Booking Number" element when DE:1153 = 'BN'.

The value will be used in "Unique Number" element in message SeaWarehouseKeeperCargoReport when DE:1153 = 'UCN'.

The value will be used in "Marks And Numbers" element in message SeaWarehouseKeeperCargoReport when DE:1153 = 'ACH'.

If the value in DE:1153 is signaled to be used in element "Type", then the value in this element is to be used in "Number".

1156	Document line identifier	C	an..6	X
1056	Version identifier	C	an..9	X
1060	Revision identifier	C	an..6	X

Segment: **TMD** Transport Movement Details
Position: 00400
Group: Segment Group 10 (Equipment Details) Mandatory
Level: 2
Usage: Conditional (Optional)
Max Use: 9
Purpose: A segment to indicate a Full Container Load (FCL) or a Less than Full Container Load (LCL).

Dependency Notes:**Semantic Notes:****Comments:**

Notes: Only for compatibility with SMDG proposal. It will not be processed by JUL system.

Data Element Summary

<u>Data Element</u>	<u>Component Element</u>	<u>Name</u>	<u>Base Attributes</u>		<u>User Attributes</u>
C219		MOVEMENT TYPE Description of type of service for movement of cargo.	C	1	O
	8335	Movement type description code Code specifying a type of movement. Refer to D.16A Data Element Dictionary for acceptable code values.	C	an..3	O
	8334	Movement type description Free form description of a type of movement.	C	an..35	O
8332		EQUIPMENT PLAN DESCRIPTION Free form description of the equipment plan.	C	1 an..26	O
8341		HAULAGE ARRANGEMENTS CODE Code specifying the arrangement for the haulage of goods. Refer to D.16A Data Element Dictionary for acceptable code values.	C	1 an..3	O

Segment: **DTM** Date/Time/Period
Position: 00410
Group: Segment Group 10 (Equipment Details) Mandatory
Level: 2
Usage: Conditional (Required)
Max Use: 2
Purpose: A segment to indicate date and time relating to the delivery of a container: - actual equipment positioning date and/or time

Dependency Notes:**Semantic Notes:****Comments:**

Notes: This segment is to provide time of the equipment's movement from/to the means of transport.

In case of genral cargo shipments (EQD:8053 = 'BB') or in the absence of exact information, the Terminal Operator will send the Date and Time information corresponding to a batch of equipment. For instance, if the discharge operations is made in two phases, part of the equipment will have a date/time value related to one phase, others will have the date/time value related to other phase.

Example: Equipment pick-up date/time on 2002/02/01 at 14:21.

DTM+201:200202011421:203'

Data Element Summary

Data Element	Component Element	Name	Base Attributes		User Attributes
C507		DATE/TIME/PERIOD	M	1	M
		Date and/or time, or period relevant to the specified date/time/period type.			
	2005	Date or time or period function code qualifier	M	an..3	M
		Code qualifying the function of a date, time or period.			
		7 Effective from date/time			
		To be treated like '181' if BGM:1001 in {'117', '266'}.			
		To be treated like '201' if BGM:1001 in {'111', '122'}.			
		To be treated like '394' if BGM:1001 in {'109', '119'}.			
		36 Expiry date			
		Only for compatibility with SMDG proposal. It will not be processed by JUL system.			
		94 Production/manufacture date			
		Only for compatibility with SMDG proposal. It will not be processed by JUL system.			
		181 Positioning date/time of equipment			
		In case of a Shift Report or a Status Change Report (BGM:1001 in {'117', '266'}).			

201	Equipment pick-up date / time In case of a Gate-Out Report (BGM:1001 = '111') or Loading Report (BGM:1001 = '122').
371	Hydrotest date Only for compatibility with SMDG proposal. It will not be processed by JUL system.
376	Biannual terminal inspection date Only for compatibility with SMDG proposal. It will not be processed by JUL system.
377	Federal Highway Administration (FHWA) inspection date Only for compatibility with SMDG proposal. It will not be processed by JUL system.
378	Container Safety Convention (CSC) inspection date Only for compatibility with SMDG proposal. It will not be processed by JUL system.
379	Periodic inspection date Only for compatibility with SMDG proposal. It will not be processed by JUL system.
394	Equipment positioning date/time, actual In case of a Gate-In Report (BGM:1001 = '109') or Discharge Report (BGM:1001 = '119').
798	Verified gross mass determination date/time Shall be sent if VGM is present in segment MEA.

2380 Date or time or period text C an..35 R
The value of a date, a date and time, a time or of a period in a specified representation.

The value will be used in "Movement Date" element.

2379 Date or time or period format code C an..3 R
Code specifying the representation of a date, time or period.
203 CCYYMMDDHHMM

Segment: **LOC** Place/Location Identification
Position: 00420
Group: Segment Group 10 (Equipment Details) Mandatory
Level: 2
Usage: Conditional (Required)
Max Use: 4
Purpose: A segment to specify ports/locations associated with the transport of a container, such as: - stowage cell - place of discharge

Dependency Notes:**Semantic Notes:****Comments:**

Notes: This segment is to provide ports that are in the route of the transport equipment or general cargo shipment (shipment to simplify), locations of the transport equipment or shipment while in the port, and the identification of the Temporary Storage Warehouse Identification where the transport equipment or shipment will be located.

The ports to be reported depend of the equipment or shipment status stated in element 8249 of segment EQD.

The ports of loading (DE:3227 = '9'), in case of a gate-out report, and discharge (DE:3227 = '11'), in case of gate-in report, must always be reported.

If the equipment or shipment is being imported then the port of loading is the port in which the equipment or shipment was moved into the vessel from which was discharged.

If the equipment or shipment is being exported then the port of discharge is the port in which the equipment or shipment will be moved out of the vessel to which will be loaded.

If the equipment or shipment is being transhipped then the port of loading is the port in which the equipment or shipment was moved into the vessel and the port of discharge is the port in which the equipment or shipment will be moved out of the vessel. But due to the availability of information, it is admissible that the port of discharge is reported as as being the current port, provided that the information is updated later (by sending a change message, or be reporting the correct port in the loading report).

If the document is a Shift Report (BGM:1001 = '117') or a Status Change Report (BGM:1001 = '266'), this segment occurs only once and indicates the new terminal or other port location of the equipment or shipment.

Example: Port of loading Rotterdam

LOC+9+NLRM:139:6'

Example: In the terminal the equipment will be placed at position terminal TCN, park 01, row/line 035-036, high 1

LOC+150+PTLEI:139:6+TCNP01035036W1'

Example: The temporary storage warehouse location identifier is
DTP00000051258PT

LOC+281++DTP00000051258PT'

Example: (new proposal) Place of delivery is Plataforma Logística da Bobadela

LOC+7+PTBBL'

Example: (only for backward compability) Place of delivery is Plataforma Logística da Bobadela

LOC+7+PTSIE:139:6+Z05:ZZZ:ZZZ'

Data Element Summary

<u>Data Element</u>	<u>Component Element</u>	<u>Name</u>	<u>Base Attributes</u>	<u>User Attributes</u>
3227		LOCATION FUNCTION CODE QUALIFIER	M 1 an..3	M
		Code identifying the function of a location.		
	5	Place of departure Only for compatibility with SMDG proposal. It will not be processed by JUL system.		
	7	Place of delivery		
	8	Place of destination Only for compatibility with SMDG proposal. It will not be processed by JUL system.		
	9	Place of loading		
	11	Place of discharge		
	13	Place of transshipment Only for compatibility with SMDG proposal. It will not be processed by JUL system.		
	15	Place of transfer responsibility Only for compatibility with SMDG proposal. It will not be processed by JUL system.		
	33	Baseport of discharge Only for compatibility with SMDG proposal. It will not be processed by JUL system.		
	34	Baseport of loading Only for compatibility with SMDG proposal. It will not be processed by JUL system.		
	65	Final port or place of discharge		
	88	Place of receipt		
	98	Place of empty equipment despatch Only for compatibility with SMDG proposal. It will not be processed by JUL system.		

147	Transport means stowage location Usage complemented in local document if mentioned in that document. Advised in loading report (BGM:1001 = '122').
150	Container stack position Usage complemented in local document if mentioned in that document. Advised in discharge report (BGM:1001 in {'109', '117', '119'}).
154	Place/location of on-hire Only for compatibility with SMDG proposal. It will not be processed by JUL system.
155	Place/location of off-hire Only for compatibility with SMDG proposal. It will not be processed by JUL system.
170	Final port of discharge Only for compatibility with SMDG proposal. It will not be processed by JUL system.
171	Place of destination for pre-stacking prior to stowage Only for compatibility with SMDG proposal. It will not be processed by JUL system.
175	Activity location Only for compatibility with SMDG proposal. It will not be processed by JUL system.
281	Bonded warehouse Use this code when identifying the Temporary Storage Warehouse.

C517	LOCATION IDENTIFICATION	C	1	D
	Identification of a location by code or name. Not to use when DE:3227 = '281'.			
3225	Location identifier	C	an..35	R
	To identify a location. When DE:3227 <> '147' then use UN/ECE Recommendation 16 (3rd edition) - UN/LOCODE- Codes for Port and Other Locations (Doc. Ref. ECE/TRADE/227) upgraded to 2003.2 version. When DE:3227 = '147' then use ISO format BBBRRTT (Bay/Row/Tier) on the identification of the stowage cell in the means of transport, or a location identification with "V" (for front), "A" (for back), or "M" (for middle).			
1131	Code list identification code	C	an..17	O
	Code identifying a user or association maintained code list. If DE:3227 <> '147'.			
	139 Port			
3055	Code list responsible agency code	C	an..3	O

Code specifying the agency responsible for a code list.

5 ISO (International Organization for Standardization)

Only to be used when DE:3227 = '147'.

6 UN/ECE (United Nations - Economic Commission for Europe)

To be used when DE:3227 <> '147'.

3224	Location name	C	an..256	O
	Name of the location.			
	Only for compatibility with SMDG proposal. It will not be processed by JUL system.			
C519	RELATED LOCATION ONE IDENTIFICATION	C	1	D
	Identification the first related location by code or name.			
	Usage complemented in local document if mentioned in that document.			
	Use only when DE:3227 in {'7', '88', '150', '281'}.			
3223	First related location identifier	C	an..35	R
	To identify a first related location.			
	Usage complemented in local document if mentioned in that document.			
	When DE:3227 = '281' then provide the temporary storage warehouse identification.			
	<i>If DE:3227 = '281' the value should be placed in "Temporary Storage Warehouse Identification" element.</i>			
	<i>If DE:3227 = '150' the following applies:</i>			
	- DE:3225 concatenated with TTT (terminal) will be in "Place" element			
	- PPP: Park (3 characters)			
	- FFFFFFF (Initial Row and Final Row) will be in "Park Start Row" and "Park Final Row" elements, respectively			
	- L (Line) will be in "Park Cell" element			
	- A (Height) will be in "Park Cell Height" element			
1131	Code list identification code	C	an..17	O
	Code identifying a user or association maintained code list.			
	Only for backward compability.			
	72	Container terminal		
		Only for compatibility with SMDG proposal. It will not be processed by JUL system.		
	261	Consignee's premises		
		Only for compatibility with SMDG proposal. It will not be processed by JUL system.		
	262	Consignor's premises		
		Only for compatibility with SMDG proposal. It will not be processed by JUL system.		
	263	Packing and/or unpacking facility		
		Only for compatibility with SMDG proposal. It will		

					not be processed by JUL system.
	264	Storage facility			Only for compatibility with SMDG proposal. It will not be processed by JUL system.
	265	Repair facility			Only for compatibility with SMDG proposal. It will not be processed by JUL system.
	266	Marine berth			Only for compatibility with SMDG proposal. It will not be processed by JUL system.
	267	Marine wharf			Only for compatibility with SMDG proposal. It will not be processed by JUL system.
	268	Gate			Only for compatibility with SMDG proposal. It will not be processed by JUL system.
	269	Warehouse			Only for compatibility with SMDG proposal. It will not be processed by JUL system.
	ZZZ	Mutually defined			
3055	Code list responsible agency code		C	an..3	O
	Code specifying the agency responsible for a code list.				
	Only for backward compability.				
	9	GS1			Only for compatibility with SMDG proposal. It will not be processed by JUL system.
	184	AU, ACOS (Australian Chamber of Shipping)			Only for compatibility with SMDG proposal. It will not be processed by JUL system.
	SMD	SMDG (Shipplanning Message Development Group)			Only for compatibility with SMDG proposal. It will not be processed by JUL system.
	ZZZ	Mutually defined			
3222	First related location name		C	an..70	O
	Name of first related location.				
	Only for compatibility with SMDG proposal. It will not be processed by JUL system.				
C553	RELATED LOCATION TWO IDENTIFICATION		C	1	O
	Identification of second related location by code or name.				
	Only for compatibility with SMDG proposal. It will not be processed by JUL system.				
3233	Second related location identifier		C	an..35	O
	To identify a second related location.				
1131	Code list identification code		C	an..17	O
	Code identifying a user or association maintained code list.				

3055	Code list responsible agency code	C	an..3	O
	Code specifying the agency responsible for a code list. Refer to D.16A Data Element Dictionary for acceptable code values.			
3232	Second related location name	C	an..70	O
	Name of the second related location.			
5479	RELATION CODE	C	1 an..3	X

Segment: **MEA** Measurements
Position: 00430
Group: Segment Group 10 (Equipment Details) Mandatory
Level: 2
Usage: Conditional (Required)
Max Use: 3
Purpose: A segment to specify measurement, other than dimensions, associated with the container, such as: - gross weight

Dependency Notes:**Semantic Notes:****Comments:**

Notes: This segment is used to provide information about the weights related with the equipment or the general cargo shipment.

In compliance with the SOLAS Convention, if the Verified Gross Weight is known, then this must be the value to report.

If the equipment is empty, then a gross weight of zero must be declared.

Example: Equipment gross weight 31703 kilograms.

MEA+AAE+AET+KGM:31703'

Example: Equipment verified gross weight according to SOLAS Convention rules and procedures is 24023 kilograms.

MEA+AAE+VGM+KGM:24023'

Example: General cargo shipment weight 123753 kilograms.

MEA+AAE+AAB+KGM:123753'

Data Element Summary

Data Element	Component Element	Name	Base Attributes	User Attributes
6311		MEASUREMENT PURPOSE CODE QUALIFIER	1 an..3	M
		Code qualifying the purpose of the measurement.		
	AAE	Measurement		
C502		MEASUREMENT DETAILS	C 1	R
		Identification of measurement type.		
	6313	Measured attribute code	C an..3	R
		Code specifying the attribute measured.		
	AAA	Net weight		
		Only for compatibility with code 'AAL' in SMDG proposal. It will not be processed by JUL system.		
	AAB	Goods item gross weight		

					Use in case of general cargo shipment (EQD:8053 = 'BB').
	AAO	Humidity			Only for compatibility with SMDG proposal. It will not be processed by JUL system.
	AAS	Air flow			Only for compatibility with SMDG proposal. It will not be processed by JUL system.
	AAW	Gross volume			Only for compatibility with SMDG proposal. It will not be processed by JUL system.
	ABJ	Volume			Only for compatibility with SMDG proposal. It will not be processed by JUL system.
	AET	Transport equipment gross weight			
	CD	Carbondioxide			Carbondioxide setting in percentage.
					Only for compatibility with SMDG proposal. It will not be processed by JUL system.
	G	Gross weight			Usage complemented in local document if mentioned in that document.
					It will be treated like 'AET'.
	MW	Maximum weight			Only for compatibility with SMDG proposal. It will not be processed by JUL system.
	T	Tare weight			Use in case of transport equipment (EQD:8053 <> 'BB').
	VGM	Transport equipment verified gross mass (weight)			
	ZO	Oxygen			Only for compatibility with SMDG proposal. It will not be processed by JUL system.
	6321	Measurement significance code	C	an..3	X
	6155	Non-discrete measurement name code	C	an..17	X
	6154	Non-discrete measurement name	C	an..70	X
C174		VALUE/RANGE	C	1	R
		Measurement value and relevant minimum and maximum values of the measurement range.			
	6411	Measurement unit code	C	an..8	R
		Code specifying the unit of measurement.			
	FTQ	Cubic Feet			Only for compatibility with SMDG proposal. It will not be processed by JUL system.
	KGM	Kilograms			
	LBR	Pounds			

					Only for compatibility with SMDG proposal. It will not be processed by JUL system.
	MTQ	Cubic Meters			Only for compatibility with SMDG proposal. It will not be processed by JUL system.
	PCT	Percentage			Only for compatibility with SMDG proposal. It will not be processed by JUL system.
6314	Measure		C	an..18	R
	To specify the value of a measurement.				
	If the value is not available, put '0'.				
	<i>The value will be used in "Gross Weight" element when DE:6313 in {'AET', 'G', 'VGM'}.</i>				
6162	Range minimum quantity		C	n..18	X
6152	Range maximum quantity		C	n..18	X
6432	Significant digits quantity		C	n..2	X
7383	SURFACE OR LAYER CODE		C	1 an..3	X

Segment: **DIM** Dimensions
Position: 00440
Group: Segment Group 10 (Equipment Details) Mandatory
Level: 2
Usage: Conditional (Optional)
Max Use: 5
Purpose: A segment to specify dimensions applicable to the container, such as: - external equipment dimensions

Dependency Notes:**Semantic Notes:****Comments:**

Notes: Example: Transport equipment has off-standard height by additional 23 cm.

DIM+13+CMT:::23'

Example: Transport equipment has extra 40 cm in length, 8 cm in width, and 9 cm in height.

DIM+9+CMT:40:8:9'

Data Element Summary

<u>Data Element</u>	<u>Component Element</u>	<u>Name</u>	<u>Base Attributes</u>		<u>User Attributes</u>
6145		DIMENSION TYPE CODE QUALIFIER	M	1 an..3	M
		Code qualifying the type of the dimension.			
		1 Gross dimensions			
		To be used for general cargo shipment only (EQD:8053 = 'BB').			
		5 Off-standard dimension front			
		6 Off-standard dimension back			
		7 Off-standard dimension right			
		8 Off-standard dimension left			
		9 Off-standard dimension general			
		10 External equipment dimension			
		To be used for non-ISO equipment only.			
		13 Off-standard dimensions height			
C211		DIMENSIONS	M	1	M
		Specification of the dimensions of a transportable unit.			
	6411	Measurement unit code	M	an..8	M
		Code specifying the unit of measurement.			
		CMT Centimetres			
		INH Inches			
	6168	Length measure	C	n..15	O
		To specify the value of a length dimension.			

	Overall length if DE:6145 in {'1', '10'}.			
	Overlength if DE:6145 in {'5', '6'}.			
6140	Width measure	C	n..15	O
	To specify the value of a width dimension.			
	Overall width if DE:6145 in {'1', '10'}.			
	Overwidth if DE:6145 in {'7', '8'}.			
6008	Height measure	C	n..15	O
	To specify the value of a height dimension.			
	Overall height if DE:6145 in {'1', '10'}.			
	Overheight if DE:6145 = '13'.			
6182	Diameter measure	C	n..15	X

Segment: **SEL** Seal Number
Position: 00450
Group: Segment Group 10 (Equipment Details) Mandatory
Level: 2
Usage: Conditional (Dependent)
Max Use: 7
Purpose: A segment to identify seal and seal issuer associated with the container, such as shipper, consolidator, carrier (sea), Customs or terminal operator.

Dependency Notes:**Semantic Notes:****Comments:**

Notes: Segment must be used when the transport equipment is full (EQD:8169 = '5').

Not applicable to general cargo shipment (EQD:8053 = 'BB').

Example: Carrier seal 6629290

SEL+6629290+CA'

Example: Mechanical seal 591753 in right condition

SEL+591753++1++1'

Example: Illegible seal from unknown origin

SEL+ILLEGIBLE+AB'

Data Element Summary

Data Element	Component Element Name	Base Attributes	User Attributes
9308	TRANSPORT UNIT SEAL IDENTIFIER The identification number of a seal affixed to a transport unit. <i>The value will be used in "Seal Number" element in SeaWarehouseKeeperContainerMovement.</i>	C 1 an..35	R
C215	SEAL ISSUER Identification of the issuer of a seal on equipment either by code or by name.	C 1	O
9303	Sealing party name code Code specifying the name of the sealing party. Refer to D.16A Data Element Dictionary for acceptable code values.	C an..3	O
1131	Code list identification code	C an..17	X
3055	Code list responsible agency code	C an..3	X
9302	Sealing party name Name of the sealing party.	C an..35	O

Only for compatibility with SMDG proposal. It will not be processed by JUL system.

4517	SEAL CONDITION CODE	C	1	an..3	O
	Code specifying the condition of a seal.				
	Refer to D.16A Data Element Dictionary for acceptable code values.				
C208	IDENTITY NUMBER RANGE	C	1		X
	Goods item identification numbers, start and end of consecutively numbered range.				
7402	Object identifier	M		an..35	X
	Code specifying the unique identity of an object.				
7402	Object identifier	C		an..35	X
	Code specifying the unique identity of an object.				
4525	SEAL TYPE CODE	C	1	an..3	O
	To specify a type of seal.				
	Refer to D.16A Data Element Dictionary for acceptable code values.				

Segment: **FTX** Free Text
Position: 00460
Group: Segment Group 10 (Equipment Details) Mandatory
Level: 2
Usage: Conditional (Dependent)
Max Use: 8
Purpose: A segment to specify processable supplementary information associated with the container, such as: - damage remarks

Dependency Notes:**Semantic Notes:****Comments:**

Notes: Usage complemented in local document if mentioned in that document.

This segment is required in case of general cargo shipment (EQD:8053 = 'BB') to inform the number and type of volumes, according to UN/ECE Recommendation 21 - Codes for Types of Cargo, Packages and Packaging Materials according to Annex V and Annex VI (Doc. Ref. TRADE/CEFACT/2002/), being moved. If it is a bulk cargo (solid or liquid) then the number of volumes is 1 (one). Additionally, it is also used to report the nature of cargo according to Annex II - Eurostat Maritime Transport Directive.

Otherwise this segment is to report complementary information, compulsory or not.

Example: The transport equipment is being reported for the first time in this operation and it is confirmed.

FTX+WHI+++CreateAndFinalize'

Example: The goods inside the equipment of transport are non-EU, associated with Customs Dispatch document 12PT00067000000000.

FTX+CUS+++NC:12PT00067000000000'

Example: The general cargo shipment is made of 8 barrels.

FTX+PAC+++8:BA'

Example: Solid bulk, agricultural products

FTX+ACB+++23'

Example: 7th wagon of the train counting from the front.

FTX+ACF+++7'

Example: Container loaded by quay gantru POG-1.

FTX+AGK+++POG-1'

Data Element Summary

<u>Data Element</u>	<u>Component Element</u>	<u>Name</u>	<u>Base Attributes</u>	<u>User Attributes</u>
4451		TEXT SUBJECT CODE QUALIFIER	M 1 an..3	M
		Code qualifying the subject of the text.		
		AAA Goods item description		
		AAI General information		
		ABS Additional conditions		
		To be used for VGM related information.		
		ACB Additional information		
		Required if EQD:8053 = 'BB'. Not needed otherwise.		
		ACF Additional attribute information		
		In case the cargo is being moved by rail, an occurrence of this segment with this qualifier is needed to inform the position of the wagon in the whole train.		
		ADZ CSC (Container Safety Convention) plate information		
		Only for compatibility with SMDG proposal. It will not be processed by JUL system.		
		AGK Equipment		
		Use this qualifier when the segment provides an identification of the terminal equipment that executed the discharge/load moment of the equipment or general cargo shipment to which this group occurrence refers.		
		CUS Customs declaration information		
		Goods customs status.		
		DAR Damage remarks		
		HAN Consignment handling instruction		
		INV Invoice instruction		
		Only for compatibility with SMDG proposal. It will not be processed by JUL system.		
		LOI Loading instruction		
		Only for compatibility with SMDG proposal. It will not be processed by JUL system.		
		OSI Other service information		
		Only for compatibility with SMDG proposal. It will not be processed by JUL system.		
		PAC Packing/marketing information		
		In case of general cargo shipment (EQD:8053 = 'BB') the occurrence of the segment with this qualifier is to provide information on the number of volumes.		
		SIN Special instructions		
		Only for compatibility with SMDG proposal. It will not be processed by JUL system.		
		WHI Warehouse instruction/information		
		Z01 Goods customs' status		

					Only for backward compability. It will be treated like 'CUS'.
	<i>ZZZ</i>	Mutually defined			
4453	FREE TEXT FUNCTION CODE		C	1 an..3	X
C107	TEXT REFERENCE		C	1	D
	Coded reference to a standard text and its source.				
	Not used if DE:4451 in {'CUS', 'Z01'}.				
4441	Free text description code		M	an..17	M
	Code specifying free form text.				
	10	Container in bad condition			
	DRF	Reference to weighting equipment certificate (SM1) or method certification (SM2)			
	NO	Damaged			
		To be used id DE:4451 = 'DAR'.			
	OK	No damage			
		To be used id DE:4451 = 'DAR'.			
	SM1	SOLAS Method 1			
	SM2	SOLAS Method 2			
1131	Code list identification code		C	an..17	O
	Code identifying a user or association maintained code list.				
	130	Special handling			
		If DE:4451 = 'HAN'.			
	<i>ZZZ</i>	Mutually defined			
3055	Code list responsible agency code		C	an..3	O
	Code specifying the agency responsible for a code list.				
	Only for backward compability.				
	184	AU, ACOS (Australian Chamber of Shipping)			
C108	TEXT LITERAL		C	1	R
	Free text; one to five lines.				
4440	Free text		M	an..512	M
	Free form text.				
	If DE:4451 = 'ZZZ' usage complemented in local document if mentioned in that document.				
	If DE:4451 in {'CUS', 'Z01'} this element should have 'C' for EU goods, or 'NC' for non-EU goods.				
	If DE:4441 in {'SM1', 'SM2'} this element should contain the reference of the certificate for ascertainment of VGM according to method 1 or 2.				
	If DE:4441 = 'DRF' this element should contain the reference to weighting equipment certificate (SM1) or method certification (SM2).				
	If DE:4451 = 'PAC' this element should contain the number of volumes of a general				

cargo shipment.

If DE:4451 = 'ACB' this element contains the nature of cargo according to Annex II - Eurostat Maritime Transport Directive.

If DE:4451 = 'ACF' this element contains the position of the wagon in the train.

If DE:4451 = 'AGK' this element should contain an identification of the terminal equipment that executed the discharge/load moment of the equipment or general cargo shipment to which this group occurrence refers.

If DE:4451 = 'PAC' the value in this element will be placed in "Number Of Packages" in SeaWarehouseKeeperCargoMovement.

If DE:4451 = 'ACB' the code value, added with a 0 (zero) on the left side if total size is less than 3 characters, will be used in element "Cargo Type" in message SeaWarehouseKeeperCargoMovement.

If DE:4451 = 'WHI' the value in this element will be placed in element "Action" in element "Item".

4440	Free text	C	an..512	O
	Free form text.			
	If DE:4451 = 'PAC' this element will contain the type of volumes according to UN/ECE Recommendation 21 - Code for Types of Cargo, Packages and Packing Materials, Annex V and Annex VI.			
	<i>If DE:4451 = 'PAC' this element will be placed in "Nature Of Volumes" in SeaWarehouseKeeperCargoMovement.</i>			
4440	Free text	C	an..512	O
	Free form text.			
4440	Free text	C	an..512	O
	Free form text.			
4440	Free text	C	an..512	O
	Free form text.			
3453	LANGUAGE NAME CODE	C	1 an..3	X
4447	FREE TEXT FORMAT CODE	C	1 an..3	X

Segment: **EQA** Attached Equipment
Position: 00480
Group: Segment Group 10 (Equipment Details) Mandatory
Level: 2
Usage: Conditional (Dependent)
Max Use: 1
Purpose: A segment to identify related container and means of transport details (rail), such as:
 - rail car

Dependency Notes:**Semantic Notes:****Comments:**

Notes: Complementary to the segment purpose, it also can be used to identify a trailer, a wagon or a barge on which the transport equipment or the general cargo shipment were in when brought/took to/from the port.

However this is different from the information in SG12 (TDT).

Needed when the mode of transport is rail.

Example: The equipment of transport is arrived the port by rail, on railcar SP 516 167.

EQA+RR+SP516167'

Data Element Summary

<u>Data Element</u>	<u>Component Element</u>	<u>Name</u>	<u>Base Attributes</u>	<u>User Attributes</u>
8053		EQUIPMENT TYPE CODE QUALIFIER	M 1 an..3	M
		Code qualifying a type of equipment.		
	AB	Chain Only for compatibility with SMDG proposal. It will not be processed by JUL system.		
	AD	Temperature recorder Only for compatibility with SMDG proposal. It will not be processed by JUL system.		
	BL	Blocks Only for compatibility with SMDG proposal. It will not be processed by JUL system.		
	BR	Barge		
	CH	Chassis Only for compatibility with SMDG proposal. It will not be processed by JUL system.		
	CN	Container Only for compatibility with SMDG proposal. It will not be processed by JUL system.		
	LAR	Lashing rope Only for compatibility with SMDG proposal. It will		

not be processed by JUL system.

RF Flat car

RG Reefer generator
Only for compatibility with SMDG proposal. It will not be processed by JUL system.

RR Rail car

STR Strap
Only for compatibility with SMDG proposal. It will not be processed by JUL system.

TE Trailer

TP Tarpaulin
Only for compatibility with SMDG proposal. It will not be processed by JUL system.

C237	EQUIPMENT IDENTIFICATION	C	1	R
	Marks (letters/numbers) identifying equipment.			
8260	Equipment identifier	C	an..17	R
	To identify equipment.			
1131	Code list identification code	C	an..17	X
3055	Code list responsible agency code	C	an..3	X
3207	Country identifier	C	an..3	X

Segment: **HAN** Handling Instructions
Position: 00500
Group: Segment Group 10 (Equipment Details) Mandatory
Level: 2
Usage: Conditional (Optional)
Max Use: 3
Purpose: A segment to specify handling instructions related to the container equipment.

Dependency Notes:**Semantic Notes:****Comments:**

Notes: To be used if the message is a Gate-In Report (BGM:1001 = '109'), a Discharge Report (BGM:1101 = '119'), a Shift Report (BGM:1001 = '117'), or a Status Change Report (BGM:1001 = '266').

This segment is used to specify additional requirements related with the handling of the transport equipment. The instructions are given by the code in DE:4079. As several instructions may be given, the segment can occur several times.

For handling purposes the usage of this segment is preferred than the usage of segment FTX.

If it is 'DIL' or 'DIT' it means that the transport equipment will leave port by rail or by truck respectively.

If it is 'RCT' it means the transport equipment requires to be connected to electric power network.

If it is 'SQ' or 'UQ' means that an operation of stuff or unstuff is needed to be performed.

Example: Equipment will be unstuffed on quay.

HAN+UQ'

Example: Equipment needs electric power.

HAN+RCT'

Data Element Summary

Data Element	Component Element	Name	Base Attributes		User Attributes
C524		HANDLING INSTRUCTIONS	C	1	R
	4079	Handling instruction description code	C	an..3	R
		Code specifying a handling instruction.			
		Based on the code proposed by ITIGG in the document "CODES FOR USE IN THE			

FREE TEXT (FTX) SEGMENT OF THE UN/EDIFACT CONTAINER MESSAGES", reference JM4/ITIGG/120/v.17, version 1.7 - August 2015, Additions by SMDG 'Container Messages' subgroup.

The value will be used in "Handling Instructions" element following the below correspondence.

If C524:4079 = 'RCT' then the value is "ElectricOrTemperature".

If C524:4079 = 'SQ' then the value is "Consolidate".

If C524:4079 = 'UQ' then the value is "Deconsolidate".

If C524:4079 = 'DIL' then the value is "Rail".

If C524:4079 = 'DIT' then the value is "Truck".

DIL	Discharge/discharged onto rail <i>Use value "Railway".</i>
DIT	Discharge/discharged onto truck <i>Use value "Truck".</i>
RCT	Connect/connected to electric mains & control temperature <i>Use value "ElectricOrTemperature".</i>
SQ	Stuff/stuffed on quay <i>Use value "Consolidate".</i>
UQ	Unstuff/unstuffed on quay <i>Use value "Deconsolidate".</i>

1131	Code list identification code	C	an..17	O
	Code identifying a user or association maintained code list. <i>Only for compatibility with SMDG proposal. It will not be processed by JUL system.</i>			
3055	Code list responsible agency code	C	an..3	O
	Code specifying the agency responsible for a code list. <i>Only for compatibility with SMDG proposal. It will not be processed by JUL system.</i> Refer to D.16A Data Element Dictionary for acceptable code values.			
4078	Handling instruction description	C	an..512	O
	Free form description of a handling instruction. <i>Only for compatibility with SMDG proposal. It will not be processed by JUL system.</i>			
C218	HAZARDOUS MATERIAL	C	1	X
	To specify a hazardous material.			
7419	Hazardous material category name code	C	an..7	X
	Code specifying a kind of hazard for a material.			
1131	Code list identification code	C	an..17	X

	Code identifying a user or association maintained code list.			
3055	Code list responsible agency code	C	an..3	X
	Code specifying the agency responsible for a code list.			
7418	Hazardous material category name	C	an..35	X
	Name of a kind of hazard for a material.			

Group: **DAM** Segment Group 11: Damage
Position: 00510
Group: Segment Group 10 (Equipment Details) Mandatory
Level: 2
Usage: Conditional (Optional)
Max Use: 9
Purpose: A group of segments to specify damage details related to the equipment.

Segment Summary

	Pos.	Seg.		Req.	Max.	Group:
	<u>No.</u>	<u>ID</u>	<u>Name</u>	<u>Des.</u>	<u>Use</u>	<u>Repeat</u>
M	00520	DAM	Damage	M	1	
O	00530	COD	Component Details	C	1	

Segment: **DAM** Damage
Position: 00520 (Trigger Segment)
Group: Segment Group 11 (Damage) Conditional (Optional)
Level: 2
Usage: Mandatory
Max Use: 1
Purpose: A segment to specify equipment damages, such as the point of the damage on the equipment, and the type of damage.

Dependency Notes:**Semantic Notes:****Comments:**

Notes: Example: Equipment is dented and holed on the right side down to the front.

DAM+1+DH:::DENTED AND HOLED+:::RIGHT SIDE DOWN FRONT'

Example: General cargo shipment consists of 10 roll cages. One has a broken wheel.

DAM+2+:::1 CAGE W/ 1 BROKEN WHEEL'

Data Element Summary

<u>Data Element</u>	<u>Component Element</u>	<u>Name</u>	<u>Base Attributes</u>		<u>User Attributes</u>
7493		DAMAGE DETAILS CODE QUALIFIER	M	1 an..3	M
		Code qualifying the damage details.			
	1	Equipment damage			
		Not applicable to general cargo shipment (EQD:8053 <> 'BB').			
	2	Consignment damage			
		Appllicable only to general cargo shipment (EQD:8053 = 'BB').			
	3	Means of transport damage			
C821		TYPE OF DAMAGE	C	1	O
		To specify the type of damage to an object.			
	7501	Damage type description code	C	an..3	O
		Code specifying the type of damage to an object.			
		ISO 9897, Annex D - Damage types, CEDEX Code.			
		Not applicable to general cargo shipment (EQD:8053 <> 'BB').			
	1131	Code list identification code	C	an..17	X
	3055	Code list responsible agency code	C	an..3	X
	7500	Damage type description	C	an..35	R
		Free form description of the type of damage to an object.			
		Damage type (free text).			
C822		DAMAGE AREA	C	1	O
		To specify where the damage is on an object.			
	7503	Damage area description code	C	an..4	O

		Code specifying where the damage is on an object.		
		<i>Only for compatibility with SMDG proposal. It will not be processed by JUL system.</i>		
	1131	Code list identification code	C	an..17 X
	3055	Code list responsible agency code	C	an..3 X
	7502	Damage area description	C	an..35 R
		Free form description of where the damage is on an object.		
C825		DAMAGE SEVERITY	C 1	O
		To specify the severity of damage to an object.		
		<i>Only for compatibility with SMDG proposal. It will not be processed by JUL system.</i>		
	7509	Damage severity description code	C	an..3 O
		Code specifying the severity of damage.		
	1131	Code list identification code	C	an..17 X
	3055	Code list responsible agency code	C	an..3 X
	7508	Damage severity description	C	an..35 O
		Free form description of the severity of damage.		
C826		ACTION	C 1	O
		To indicate an action which has been taken or is to be taken (e.g. in relation to a certain object).		
		<i>Only for compatibility with SMDG proposal. It will not be processed by JUL system.</i>		
	1229	Action code	C	an..3 O
		Code specifying the action to be taken or already taken.		
		Refer to D.16A Data Element Dictionary for acceptable code values.		
	1131	Code list identification code	C	an..17 X
	3055	Code list responsible agency code	C	an..3 X
	1228	Action description	C	an..35 O
		Free form description of the action to be taken or already taken.		

Segment: **COD** Component Details
Position: 00530
Group: Segment Group 11 (Damage) Conditional (Optional)
Level: 3
Usage: Conditional (Optional)
Max Use: 1
Purpose: A segment to specify component details of the damaged equipment.

Dependency Notes:**Semantic Notes:****Comments:**

Notes: Only for compatibility with SMDG proposal. It will not be processed by JUL system.

Data Element Summary

Data Element	Component Element	Name	Base Attributes		User Attributes
C823		TYPE OF UNIT/COMPONENT	C	1	O
		To identify the type of unit/component of an object (e.g. lock, door, tyre).			
	7505	Unit or component type description code	C	an..3	O
		Code specifying a type of unit or component.			
	1131	Code list identification code	C	an..17	X
	3055	Code list responsible agency code	C	an..3	X
	7504	Unit or component type description	C	an..35	O
		Free form description of a type of unit or component.			
C824		COMPONENT MATERIAL	C	1	O
		To identify the material of which a component is composed (e.g. steel, plastics).			
	7507	Component material description code	C	an..3	O
		Code specifying a component material.			
	1131	Code list identification code	C	an..17	X
	3055	Code list responsible agency code	C	an..3	X
	7506	Component material description	C	an..35	O
		Free form description of a component material.			

Group:	TDT Segment Group 12: Transport Information
Position:	00540
Group:	Segment Group 10 (Equipment Details) Mandatory
Level:	2
Usage:	Conditional (Dependent)
Max Use:	2
Purpose:	A group of segments to indicate details of the movement of containers by sea and by inland carriers, such as mode and means of transport and locations.
Notes:	<p>This group is used in case of Gate-In/Gate-Out Reports, Loading/Discharge Reports, and Status Change Report.</p> <p>In the first case BGM:1001 in {'109', '119'}, the group is used to indicate pre-carriage information.</p> <p>On the second case BGM:1001 in {'111', '122'}, the group is used to indicate on-carriage information.</p> <p>On the third case (BGM:1001 = '266'), the group is used to indicate the vessel call from/to the equipment was/will be associated. The value of TDT:8051 clarifies the nature of this vessel call. If TDT:8051 = '10' (pre-carriage) then the vessel call is the one from where the equipment came, and it was delivered to the Terminal Operator from other Operator. If TDT:8051 = '30' (on-carriage) then the vessel call is the one to where the equipment moved, and it was delivered by the Terminal Operator to other Operator. Vessel call is identified the same way as in SG2:RFF:1154.</p> <p>The third case will also be used to declare that empty equipment is to be moved to/from depot from/to terminal. Data element TDT:8051 will be used the same way as described in order to clarify the direction of the movement. For this particular situation TDT:8067 must have code '9' and SG9:NAD:3035 must have 'EQ'. Also applied to declare that equipment is to be associated to non-vessel process folder.</p> <p>In some situations, for purpose planning it is useful to make a reference to a future voyage or call of a means of transport. This group fills this requirement allowing the reference to on or two ahead voyages or calls in relation to the call identified in SG2.</p>

Segment Summary

	Pos.	Seg.		Req.	Max.	Group:
	No.	ID	Name	Des.	Use	Repeat
M	00550	TDT	Transport Information	M	1	
O	00560	DTM	Date/Time/Period	C	2	
O	00570	RFF	Reference	C	1	
	00580		Segment Group 13: Place/Location Identification	C		1

Segment: **TDT** **Transport Information**
Position: 00550 (Trigger Segment)
Group: Segment Group 12 (Transport Information) Conditional (Dependent)
Level: 2
Usage: Mandatory
Max Use: 1
Purpose: A segment to indicate information related to the inland transport stage (road, rail or inland water), such as mode of transport, identification of the means of transport and inland carrier.

Dependency Notes:**Semantic Notes:****Comments:**

Notes: Example: Equipment of transport delivered by company of transport Sardão, by road on truck with licence plate 45-72-SJ

TDT+10++3++:::SARDAO+++SJ-45-72:146'

Data Element Summary

<u>Data Element</u>	<u>Component Element</u>	<u>Name</u>	<u>Base Attributes</u>			<u>User Attributes</u>
8051		TRANSPORT STAGE CODE QUALIFIER Code qualifying a specific stage of transport. 1 Inland transport 10 Pre-carriage transport 28 Second on-carriage transport 30 On-carriage transport	M	1	an..3	M
8028		MEANS OF TRANSPORT JOURNEY IDENTIFIER To identify a journey of a means of transport. Usage complemented in local document if mentioned in that document.	C	1	an..17	O
C220		MODE OF TRANSPORT Method of transport code or name. Code preferred.	C	1		R
	8067	Transport mode name code Code specifying the name of a mode of transport. UN Recommendation 19 - Code for Modes of Transport. 0 Transport mode not specified 1 Maritime 2 Rail 3 Road 4 Air Only for compatibility with SMDG proposal. It will not be processed by JUL system. 7 Fixed installation 8 Inland water	C		an..3	R

	9	Transport mode not applicable			
C001	8066	Transport mode name	C	an..17	X
		TRANSPORT MEANS	C	1	O
		Code and/or name identifying the type of means of transport.			
		Usage complemented in local document if mentioned in that document.			
	8179	Transport means description code	C	an..8	O
		Code specifying the means of transport.			
		UN Recommendation 28 - Code for Types of Means of Transport.			
	1131	Code list identification code	C	an..17	X
	3055	Code list responsible agency code	C	an..3	X
	8178	Transport means description	C	an..17	O
		Free form description of the means of transport.			
		Only for compatibility with SMDG proposal. It will not be processed by JUL system.			
C040		CARRIER	C	1	D
		Identification of a carrier by code and/or by name. Code preferred.			
		Element to identify the entity that transports the equipment or the general cargo shipment into/from the port, without being the main carrier.			
		To be used only when BGM:1001 in {'109', '111', '119', '122'}.			
	3127	Carrier identifier	C	an..17	R
		To identify a carrier.			
		Transport company identified by EORI id.			
		<i>The value will be used in "Transport Company" element.</i>			
	1131	Code list identification code	C	an..17	O
		Code identifying a user or association maintained code list.			
		Only for backward compatibility.			
		172			
		Carrier code			
		If DE:3127 was sent with value.			
	3055	Code list responsible agency code	C	an..3	O
		Code specifying the agency responsible for a code list.			
		Only for compatibility with SMDG proposal. It will not be processed by JUL system.			
		Refer to D.16A Data Element Dictionary for acceptable code values.			
	3126	Carrier name	C	an..35	R
		Name of a carrier.			
8101		TRANSIT DIRECTION INDICATOR CODE	C	1 an..3	X
C401		EXCESS TRANSPORTATION INFORMATION	C	1	X
		To provide details of reason for, and responsibility for, use of transportation other than normally utilized.			

	8457	Excess transportation reason code	M	an..3	X
		Code specifying the reason for excess transportation.			
	8459	Excess transportation responsibility code	M	an..3	X
		Code specifying the responsibility for excess transportation.			
	7130	Customer shipment authorisation identifier	C	an..17	X
		To identify the authorisation to ship issued by the customer.			
C222		TRANSPORT IDENTIFICATION	C	1	D
		Code and/or name identifying the means of transport. To be used only when BGM:1001 in {'109', '111', '119', '122'}.			
	8213	Transport means identification name identifier	C	an..35	R
		Identifies the name of the transport means. Usage complemented in local document if mentioned in that document. In case of rail transport (DE:8067 = '2') then this element contains the train number. In case of road transport (DE:8067 = '3') then this element contains the truck/tractor licence plate number.			
		<i>The value will be used in "Transport Vehicle Registration" element.</i>			
	1131	Code list identification code	C	an..17	O
		Code identifying a user or association maintained code list. Only for compatibility with SMDG proposal. It will not be processed by JUL system.			
	3055	Code list responsible agency code	C	an..3	O
		Code specifying the agency responsible for a code list. Only for compatibility with SMDG proposal. It will not be processed by JUL system. Refer to D.16A Data Element Dictionary for acceptable code values.			
	8212	Transport means identification name	C	an..70	O
		Name identifying a means of transport. Only for compatibility with SMDG proposal. It will not be processed by JUL system.			
	8453	Transport means nationality code	C	an..3	O
		Code specifying the nationality of a means of transport. Flag of means of transport (ISO 3166 country code, 2 alpha).			
8281		TRANSPORT MEANS OWNERSHIP INDICATOR CODE	C	1	an..3
C003		POWER TYPE	C	1	X
		To specify the type of power.			
	7041	Power type code	C	an..3	X
		Code indicating the type of power.			
	1131	Code list identification code	C	an..17	X

	Code identifying a user or association maintained code list.			
3055	Code list responsible agency code	C	an..3	X
	Code specifying the agency responsible for a code list.			
7040	Power type description	C	an..17	X
	Description of the type of power.			

Segment: **DTM** Date/Time/Period
Position: 00560
Group: Segment Group 12 (Transport Information) Conditional (Dependent)
Level: 3
Usage: Conditional (Optional)
Max Use: 2
Purpose: A segment to specify the date(s) and time(s) related to the inland transport (road, rail or inland water).

Dependency Notes:**Semantic Notes:****Comments:**

Notes: Example: estimated time of train departure is 2018/12/02 16:30

DTM+133:201812021630:203'

Data Element Summary

<u>Data Element</u>	<u>Component Element</u>	<u>Name</u>	<u>Base Attributes</u>		<u>User Attributes</u>
C507		DATE/TIME/PERIOD	M	1	M
		Date and/or time, or period relevant to the specified date/time/period type.			
	2005	Date or time or period function code qualifier	M	an..3	M
		Code qualifying the function of a date, time or period.			
		132 Transport means arrival date time, estimated			
		133 Transport means departure date/time, estimated			
		178 Transport means arrival date time, actual			
		Only for compatibility with SMDG proposal. It will not be processed by JUL system.			
		186 Transport means departure date/time, actual			
		Only for compatibility with SMDG proposal. It will not be processed by JUL system.			
	2380	Date or time or period text	C	an..35	O
		The value of a date, a date and time, a time or of a period in a specified representation.			
	2379	Date or time or period format code	C	an..3	O
		Code specifying the representation of a date, time or period.			
		203 CCYYMMDDHHMM			

Segment: **RFF** Reference
Position: 00570
Group: Segment Group 12 (Transport Information) Conditional (Dependent)
Level: 3
Usage: Conditional (Optional)
Max Use: 1
Purpose: A segment to specify an additional reference related to the transport details.

Dependency Notes:**Semantic Notes:****Comments:**

Notes: Example: train visit id PTSIE218000123

RFF+Z01:PTSIE218000123'

Data Element Summary

<u>Data Element</u>	<u>Component Element</u>	<u>Name</u>	<u>Base Attributes</u>		<u>User Attributes</u>
C506		REFERENCE	M	1	M
		Identification of a reference.			
	1153	Reference code qualifier	M	an..3	M
		Code qualifying a reference.			
		Z01 Means of transport visit id			
	1154	Reference identifier	C	an..70	R
		Identifies a reference.			
	1156	Document line identifier	C	an..6	X
	1056	Version identifier	C	an..9	X
	1060	Revision identifier	C	an..6	X

Group: **LOC** Segment Group 13: Place/Location Identification
Position: 00580
Group: Segment Group 12 (Transport Information) Conditional (Dependent)
Level: 3
Usage: Conditional (Optional)
Max Use: 1
Purpose: A segment group to specify ports and other locations associated with the inland transport of containers.
Notes: Usage complemented in local document if mentioned in that document.

Segment Summary

	Pos.	Seg.		Req.	Max.	Group:
	<u>No.</u>	<u>ID</u>	<u>Name</u>	<u>Des.</u>	<u>Use</u>	<u>Repeat</u>
M	00590	LOC	Place/Location Identification	M	1	

Segment: **LOC** **Place/Location Identification**
Position: 00590 (Trigger Segment)
Group: Segment Group 13 (Place/Location Identification) Conditional (Optional)
Level: 3
Usage: Mandatory
Max Use: 1
Purpose: A segment to specify ports/locations associated with inland transport of a container, such as: - place of departure - place of arrival

Dependency Notes:**Semantic Notes:****Comments:**

Notes: Example: Place of delivery is Bobadela, Plataforma Logística

LOC+7+PTBBL:139:5+Z05:ZZZ:ZZZ'

Data Element Summary

<u>Data Element</u>	<u>Component Element</u>	<u>Name</u>	<u>Base Attributes</u>			<u>User Attributes</u>
3227		LOCATION FUNCTION CODE QUALIFIER Code identifying the function of a location. 7 Place of delivery 88 Place of receipt	M	1	an..3	M
C517		LOCATION IDENTIFICATION Identification of a location by code or name.	C	1		O
	3225	Location identifier To identify a location. Use UN/ECE Recommendation 16 (3rd edition) - UN/LOCODE- Codes for Port and Other Locations (Doc. Ref. ECE/TRADE/227) upgraded to 2003.2 version. If the Locode is unknown, then send ISO Country Code (2-alpha) and send DE:3224.	C		an..35	O
	1131	Code list identification code Code identifying a user or association maintained code list. 139 Port	C		an..17	O
	3055	Code list responsible agency code Code specifying the agency responsible for a code list. 5 ISO (International Organization for Standardization) 6 UN/ECE (United Nations - Economic Commission for Europe)	C		an..3	O
	3224	Location name Name of the location. Needed if Locode is unknown.	C		an..256	O
C519		RELATED LOCATION ONE IDENTIFICATION Identification the first related location by code or name. Usage complemented in local document if mentioned in that document.	C	1		O

	3223	First related location identifier	C	an..35	O
		To identify a first related location.			
	1131	Code list identification code	C	an..17	O
		Code identifying a user or association maintained code list.			
		<i>ZZZ</i> Mutually defined			
	3055	Code list responsible agency code	C	an..3	O
		Code specifying the agency responsible for a code list.			
		<i>ZZZ</i> Mutually defined			
	3222	First related location name	C	an..70	O
		Name of first related location.			
		<i>Only for compatibility with SMDG proposal. It will not be processed by JUL system.</i>			
C553		RELATED LOCATION TWO IDENTIFICATION	C	1	O
		Identification of second related location by code or name.			
		<i>Only for compatibility with SMDG proposal. It will not be processed by JUL system.</i>			
	3233	Second related location identifier	C	an..35	O
		To identify a second related location.			
	1131	Code list identification code	C	an..17	O
		Code identifying a user or association maintained code list.			
	3055	Code list responsible agency code	C	an..3	O
		Code specifying the agency responsible for a code list.			
		Refer to D.16A Data Element Dictionary for acceptable code values.			
	3232	Second related location name	C	an..70	O
		Name of the second related location.			
5479		RELATION CODE	C	1 an..3	X

Segment: **NAD** Name and Address
Position: 00610
Group: Segment Group 10 (Equipment Details) Mandatory
Level: 2
Usage: Conditional (Optional)
Max Use: 9
Purpose: A segment to specify the actual address where a piece of equipment is to be delivered finally (final place of positioning).

Dependency Notes:**Semantic Notes:****Comments:**

Notes: Usage complemented in local document if mentioned in that document.

One usage of this segment is to specify the Shipping Agent that is responsible for the equipment or general cargo shipment in the call, whenever it is responsible by the vessel call or not. In this case DE:3035 is 'AG'.

Another usage applies to Status Change Reports (BGM:1001 = '266'). In this case the segment is used to identify another Terminal Operator that is delivering/receiving the equipment or general cargo shipment, or to declare the entity responsible for the equipment depot where the equipment was moved to/from (the value of TDT:8051 clarifies in which direction the equipment is moving).

Other usage also applies to send the name of the driver that is on-carring the transport equipment or the general cargo shipment. This is used on Gate-Out reports (BGM:1001 = '111').

Other usage is to identify the road (DE:3035 = 'GA') or rail (DE:3035 = 'GT') operator that is carrying the equipment or the shipment.

Other usage is to identify the party receiving or delivering the goods at the location identified in SG10:LOC. In this case NAD:3035 = 'JC' or NAD:3035 = 'JB', respectively. This usage is the preferred way cope with some situations, when the code in SG10:LOC:C517:3225 is not sufficient to identify the location for deliver or reception of goods, due to the lack of detail inherent to the reference code. This is mainly applied when SG10:LOC:3227 in {'7', '88'} in that a particular installation may be identified.

Additionally the same issue applies to SG13:LOC. However as in SG13 we do not a NAD segment, the above approach needs some adjustment. It consists in the adoption of qualifiers 'PW' and 'DP' in SG10:NAD:3035. Qualifier code 'PW' is to be treated like 'JB' and qualifier 'DP' is to be treated like 'JC' when in conjunction with SG13:LOC:C517:3225 when SG13:LOC:3227 in {'7', '88'}.

Example: Equipment responsible agent identified by EORI PT556734947.

NAD+AG+PT556734947:167:155'

Example: Equipment leaving the terminal on a truck driven by Mr. Carlos Manuel.

NAD+DR++CARLOS MANUEL'

Data Element Summary

<u>Data Element</u>	<u>Component Element</u>	<u>Name</u>	<u>Base Attributes</u>	<u>User Attributes</u>
3035		PARTY FUNCTION CODE QUALIFIER	M 1 an..3	M

Code giving specific meaning to a party.

Usage complemented in local document if mentioned in that document.

AG	Agent	The entity responsible for the transport equipment and the general cargo shipment in the facility.
AM	Authorized official	Name in capitals of Authorized person signing for verified gross mass (weight) = EDI signature.
CA	Carrier	Only for compatibility with SMDG proposal. It will not be processed by JUL system.
CB	Customs broker	Only for compatibility with SMDG proposal. It will not be processed by JUL system.
CF	Container operator/lessee	
CG	Carrier's agent	Only for compatibility with SMDG proposal. It will not be processed by JUL system.
CN	Consignee	
CZ	Consignor	
DP	Delivery party	Use this qualifier to identify the party responsible for terminal receiving the goods from carriage at the location identified in SG13:LOC, when SG13:LOC:3227 = '7'.
DR	Driver	
EQ	Empty container responsible party	
EX	Exporter	
FP	Freight/charges payer	Only for compatibility with SMDG proposal. It will not be processed by JUL system.
GA	Road carrier	Shall be provided if SG12:TDT:8067 = '2'.
GT	Rail carrier	Shall be provided if SG12:TDT:8067 = '3'.
HR	Shipping line service	Only for compatibility with SMDG proposal. It will not be processed by JUL system.

IM	Importer
IO	Insurance company Only for compatibility with SMDG proposal. It will not be processed by JUL system.
JB	Goods collection party Use this qualifier to identify the party responsible for the terminal delivering the goods for carriage at the location identified in SG10:LOC, when SG10:LOC:3227 = '88'.
JC	Party at final place of positioning Use this qualifier to identify the party responsible for terminal receiving the goods from carriage at the location identified in SG10:LOC, when SG10:LOC:3227 = '7'.
MF	Manufacturer of goods Only for compatibility with SMDG proposal. It will not be processed by JUL system.
OG	Owner or lessor's surveyor Only for compatibility with SMDG proposal. It will not be processed by JUL system.
OH	Lessee's surveyor Only for compatibility with SMDG proposal. It will not be processed by JUL system.
PW	Despatch party Use this qualifier to identify the party responsible for terminal receiving the goods from carriage at the location identified in SG13:LOC, when SG13:LOC:3227 = '88'.
SPC	SOLAS verified gross mass responsible party
ST	Ship to Only for compatibility with SMDG proposal. It will not be processed by JUL system.
TR	Terminal operator
WPA	Weighting party

C082 PARTY IDENTIFICATION DETAILS C 1 O

Identification of a transaction party by code.

3039 Party identifier M an..35 M

Code specifying the identity of a party.

Number corresponding to EORI of the entity, or another code mutually agreed between the parties.

The value will be used in "Responsible Agent" element if NAD:3035 = 'AG'.

1131 Code list identification code C an..17 O

Code identifying a user or association maintained code list.

160 Party identification

Only for backward compability. Shall be sent if entity is Portuguese (DE:3207 = 'PT').

	172	Carrier code			
		Only for backward compability.			
	3055	Code list responsible agency code	C	an..3	O
		Code specifying the agency responsible for a code list. Only for compatibility with SMDG proposal. It will not be processed by JUL system. Refer to D.16A Data Element Dictionary for acceptable code values.			
C058		NAME AND ADDRESS	C	1	D
		Unstructured name and address: one to five lines. Used to place the name of the Driver (NAD:3035 = 'DR') or the name of the Agent (NAD:3035 = 'AG').			
	3124	Name and address description	M	an..35	M
		Free form description of a name and address line.			
	3124	Name and address description	C	an..35	O
		Free form description of a name and address line. Only for compatibility with SMDG proposal. It will not be processed by JUL system.			
	3124	Name and address description	C	an..35	O
		Free form description of a name and address line. Only for compatibility with SMDG proposal. It will not be processed by JUL system.			
	3124	Name and address description	C	an..35	O
		Free form description of a name and address line. Only for compatibility with SMDG proposal. It will not be processed by JUL system.			
	3124	Name and address description	C	an..35	O
		Free form description of a name and address line. Only for compatibility with SMDG proposal. It will not be processed by JUL system.			
C080		PARTY NAME	C	1	O
		Identification of a transaction party by name, one to five lines. Party name may be formatted. Only for compatibility with SMDG proposal. It will not be processed by JUL system.			
	3036	Party name	M	an..70	M
		Name of a party.			
	3036	Party name	C	an..70	X
	3036	Party name	C	an..70	X
	3036	Party name	C	an..70	X
	3036	Party name	C	an..70	X
	3045	Party name format code	C	an..3	X
C059		STREET	C	1	O
		Street address and/or PO Box number in a structured address: one to four lines. Only for compatibility with SMDG proposal. It will not be processed			

		<i>by JUL system.</i>			
	3042	Street and number or post office box identifier	M	an..35	M
		To identify a street and number and/or Post Office box number.			
	3042	Street and number or post office box identifier	C	an..35	X
	3042	Street and number or post office box identifier	C	an..35	X
	3042	Street and number or post office box identifier	C	an..35	X
3164		CITY NAME	C	1 an..35	O
		Name of a city.			
		<i>Only for compatibility with SMDG proposal. It will not be processed by JUL system.</i>			
C819		COUNTRY SUBDIVISION DETAILS	C	1	O
		To specify a country subdivision, such as state, canton, county, prefecture.			
		<i>Only for compatibility with SMDG proposal. It will not be processed by JUL system.</i>			
	3229	Country subdivision identifier	C	an..9	O
		To identify a country subdivision, such as state, canton, county, prefecture.			
	1131	Code list identification code	C	an..17	O
		Code identifying a user or association maintained code list.			
	3055	Code list responsible agency code	C	an..3	O
		Code specifying the agency responsible for a code list.			
		Refer to D.16A Data Element Dictionary for acceptable code values.			
	3228	Country subdivision name	C	an..70	O
		Name of a country subdivision, such as state, canton, county, prefecture.			
3251		POSTAL IDENTIFICATION CODE	C	1 an..17	O
		Code specifying the postal zone or address.			
		<i>Only for compatibility with SMDG proposal. It will not be processed by JUL system.</i>			
3207		COUNTRY IDENTIFIER	C	1 an..3	O
		Identification of the name of the country or other geographical entity as defined in ISO 3166-1 and UN/ECE Recommendation 3.			
		ISO 3166 Country Code, 2-Alpha.			

Group: **DGS** Segment Group 14: Dangerous Goods
Position: 00620
Group: Segment Group 10 (Equipment Details) Mandatory
Level: 2
Usage: Conditional (Optional)
Max Use: 9
Purpose: A group of segments to specify dangerous goods.
Notes: The group is just used to declare the presence of dangerous goods.
 However the data provided will be kept.

Segment Summary

	Pos.	Seg.		Req.	Max.	Group:
	<u>No.</u>	<u>ID</u>	<u>Name</u>	<u>Des.</u>	<u>Use</u>	<u>Repeat</u>
M	00630	DGS	Dangerous Goods	M	1	
O	00640	FTX	Free Text	C	1	

Segment: **DGS** Dangerous Goods
Position: 00630 (Trigger Segment)
Group: Segment Group 14 (Dangerous Goods) Conditional (Optional)
Level: 2
Usage: Mandatory
Max Use: 1
Purpose: A segment to indicate the dangerous goods regulations which apply, the class of dangerous goods, additional dangerous goods codes, the United Nations Dangerous Goods (UNDG) number and the shipment flash point.

Dependency Notes:**Semantic Notes:****Comments:**

Notes: Example: Goods with IMDG code 6.1, with UNDG 3253.

DGS+IMD+6.1+3253'

Data Element Summary

<u>Data Element</u>	<u>Component Element</u>	<u>Name</u>	<u>Base Attributes</u>	<u>User Attributes</u>
8273		DANGEROUS GOODS REGULATIONS CODE	C 1 an..3	R
		Code specifying a dangerous goods regulation.		
		ADR		
		European agreement on the international carriage of dangerous goods on road (ADR)		
		<i>Only for compatibility with SMDG proposal. It will not be processed by JUL system.</i>		
		ANR		
		ADNR, Autorisation de transport de matieres Dangereuses pour la Navigation sur le Rhin		
		<i>Only for compatibility with SMDG proposal. It will not be processed by JUL system.</i>		
		CFR		
		US, 49 Code of federal regulations		
		<i>Only for compatibility with SMDG proposal. It will not be processed by JUL system.</i>		
		IMD		
		IMO IMDG code		
		RID		
		Railroad dangerous goods book (RID)		
		<i>Only for compatibility with SMDG proposal. It will not be processed by JUL system.</i>		
C205		HAZARD CODE	C 1	R
		The identification of the dangerous goods in code.		
	8351	Hazard identification code	M an..7	M
		Code identifying a hazard.		
		IMDG class / sub-class number.		

The value will be used to identify the value to use in "Dangerous Goods" element.

If the value in C205:8351 is present, then the value is "Yes". Otherwise is "No".

8078	Additional hazard classification identifier	C	an..7	O
	To identify an additional hazard classification. Only for compatibility with SMDG proposal. It will not be processed by JUL system.			
8092	Hazard code version identifier	C	an..10	O
	To identify the version number of a hazard code. Only for compatibility with SMDG proposal. It will not be processed by JUL system.			
C234	UNDG INFORMATION	C	1	O
	Information on dangerous goods, taken from the United Nations Dangerous Goods classification.			
7124	United Nations Dangerous Goods (UNDG) identifier	C	n4	O
	The unique serial number assigned within the United Nations to substances and articles contained in a list of the dangerous goods most commonly carried. UNDG number			
7088	Dangerous goods flashpoint description	C	an..8	X
C223	DANGEROUS GOODS SHIPMENT FLASHPOINT	C	1	O
	Temperature at which a vapor can be ignited as per ISO 1523/73. Only for compatibility with SMDG proposal. It will not be processed by JUL system.			
7106	Shipment flashpoint degree	C	n3	O
	To specify the value of the flashpoint of a shipment.			
6411	Measurement unit code	C	an..8	O
	Code specifying the unit of measurement.			
8339	PACKAGING DANGER LEVEL CODE	C	1 an..3	O
	Code specifying the level of danger for which the packaging must cater.			
	1	Great danger		
	2	Medium danger		
	3	Minor danger		
8364	EMERGENCY PROCEDURE FOR SHIPS IDENTIFIER	C	1 an..8	O
	To identify the emergency procedure number for ships transporting dangerous goods. Synonym: EMS Number. Only for compatibility with SMDG proposal. It will not be processed by JUL system.			
8410	HAZARD MEDICAL FIRST AID GUIDE IDENTIFIER	C	1 an..4	O
	To identify a Medical First Aid Guide (MFAG) for hazardous goods. Only for compatibility with SMDG proposal. It will not be processed by JUL system.			
8126	TRANSPORT EMERGENCY CARD IDENTIFIER	C	1 an..10	O

		To identify a transport emergency (TREM) card.			
		Only for compatibility with SMDG proposal. It will not be processed by JUL system.			
C235	HAZARD IDENTIFICATION PLACARD DETAILS	C	1		O
	These numbers appear on the hazard identification placard required on the means of transport.				
	Only for compatibility with SMDG proposal. It will not be processed by JUL system.				
8158	Orange hazard placard upper part identifier	C	an..4		O
	To specify the identity number for the upper part of the orange hazard placard required on the means of transport.				
8186	Orange hazard placard lower part identifier	C	an4		O
	To specify the identity number for the lower part of the orange hazard placard required on the means of transport.				
C236	DANGEROUS GOODS LABEL	C	1		O
	Markings identifying the type of hazardous goods and similar information.				
	Only for compatibility with SMDG proposal. It will not be processed by JUL system.				
8246	Dangerous goods marking identifier	C	an..4		O
	To identify the marking of dangerous goods.				
8246	Dangerous goods marking identifier	C	an..4		O
	To identify the marking of dangerous goods.				
8246	Dangerous goods marking identifier	C	an..4		O
	To identify the marking of dangerous goods.				
8246	Dangerous goods marking identifier	C	an..4		O
	To identify the marking of dangerous goods.				
8255	PACKING INSTRUCTION TYPE CODE	C	1	an..3	X
8179	TRANSPORT MEANS DESCRIPTION CODE	C	1	an..8	X
8211	HAZARDOUS CARGO TRANSPORT AUTHORIZATION CODE	C	1	an..3	X
C289	TUNNEL RESTRICTION	C	1		X
	To specify a restriction for transport through tunnels.				
8461	Tunnel Restriction Code	C	an..6		X
	A code indicating a restriction for transport through tunnels.				
1131	Code list identification code	C	an..17		X
	Code identifying a user or association maintained code list.				
3055	Code list responsible agency code	C	an..3		X
	Code specifying the agency responsible for a code list.				

Segment: **FTX** Free Text
Position: 00640
Group: Segment Group 14 (Dangerous Goods) Conditional (Optional)
Level: 3
Usage: Conditional (Optional)
Max Use: 1
Purpose: A segment to specify supplementary details regarding the dangerous goods such as dangerous goods technical name and dangerous goods additional information.

Dependency Notes:**Semantic Notes:****Comments:****Notes:** Example: Technical name is Butyl Acrylates, Stabilized

FTX+AAD+++BUTYL ACRYLATES, STABILIZED'

Data Element Summary

<u>Data Element</u>	<u>Component Element</u>	<u>Name</u>	<u>Base Attributes</u>		<u>User Attributes</u>
4451		TEXT SUBJECT CODE QUALIFIER Code qualifying the subject of the text.	M	1 an..3	M
	AAC	Dangerous goods additional information <i>Only for compatibility with SMDG proposal. It will not be processed by JUL system.</i>			
	AAD	Dangerous goods technical name			
4453		FREE TEXT FUNCTION CODE	C	1 an..3	X
C107		TEXT REFERENCE Coded reference to a standard text and its source. <i>Only for compatibility with SMDG proposal. It will not be processed by JUL system.</i>	C	1	O
	4441	Free text description code Code specifying free form text.	M	an..17	M
	1131	Code list identification code	C	an..17	X
	3055	Code list responsible agency code	C	an..3	X
C108		TEXT LITERAL Free text; one to five lines.	C	1	R
	4440	Free text Free form text.	M	an..512	M
	4440	Free text Free form text.	C	an..512	O
	4440	Free text Free form text.	C	an..512	O
	4440	Free text Free form text.	C	an..512	O

4440	Free text	C	an..512	O
	Free form text.			
3453	LANGUAGE NAME CODE	C	1 an..3	X
4447	FREE TEXT FORMAT CODE	C	1 an..3	X

Group: **TMP** Segment Group 16: Temperature
Position: 00690
Group: Segment Group 10 (Equipment Details) Mandatory
Level: 2
Usage: Conditional (Dependent)
Max Use: 1
Purpose: A segment group to identify transport related temperature settings.
Notes: Not used in case of general cargo shipment (EQD:8053 = 'BB').

This segment group is used to provide information on temperature that a transport equipment must be set during its movement through the port. This is a typical case with reefer containers.

Segment Summary

	Pos.	Seg.		Req.	Max.	Group:
	<u>No.</u>	<u>ID</u>	<u>Name</u>	<u>Des.</u>	<u>Use</u>	<u>Repeat</u>
M	00700	TMP	Temperature	M	1	
O	00710	RNG	Range Details	C	1	

Segment: **TMP** Temperature
Position: 00700 (Trigger Segment)
Group: Segment Group 16 (Temperature) Conditional (Dependent)
Level: 2
Usage: Mandatory
Max Use: 1
Purpose: A segment to specify the type of transport related temperature such as storage, transport or operating temperature and also to optionally specify a single value temperature setting.

Dependency Notes:**Semantic Notes:****Comments:**

Notes: Example: Equipment inside temperature must be 5° C

TMP+2+5:CEL'

Data Element Summary

<u>Data Element</u>	<u>Component Element</u>	<u>Name</u>	<u>Base Attributes</u>			<u>User Attributes</u>
6245		TEMPERATURE TYPE CODE QUALIFIER	M	1	an..3	M
		Code qualifying the type of a temperature.				
		2 Transport temperature				
C239		TEMPERATURE SETTING	C	1		R
		The temperature under which the goods are (to be) stored or shipped.				
	6246	Temperature degree	C		n..15	R
		To specify the value of a temperature.				
	6411	Measurement unit code	C		an..8	R
		Code specifying the unit of measurement.				
		CEL Celsius				
		FAH Fahrenheit				

Segment: **RNG** Range Details
Position: 00710
Group: Segment Group 16 (Temperature) Conditional (Dependent)
Level: 3
Usage: Conditional (Optional)
Max Use: 1
Purpose: A segment to optionally specify the transport related temperature as a range of values.

Dependency Notes:**Semantic Notes:****Comments:****Notes:**

Only to be used when a temperature range is to be specified. When a set temperature is to be specified, the TMP segment must be used.

Example: Temperature should not be lower than 2° C or higher than 7° C.

RNG+5+CEL:2:7'

Data Element Summary

<u>Data Element</u>	<u>Component Element</u>	<u>Name</u>	<u>Base Attributes</u>			<u>User Attributes</u>
6167		RANGE TYPE CODE QUALIFIER Code qualifying a type of range. 5 Temperature range	M	1	an..3	M
C280		RANGE Range minimum and maximum limits.	C	1		R
	6411	Measurement unit code Code specifying the unit of measurement. CEL Celsius FAH Fahrenheit	M		an..8	M
	6162	Range minimum quantity To specify the minimum value of a range.	C		n..18	R
	6152	Range maximum quantity To specify the maximum value of a range.	C		n..18	R

Segment:	CNT Control Total
Position:	00720
Group:	
Level:	0
Usage:	Conditional (Required)
Max Use:	1
Purpose:	A segment to specify the number of containers in the message.
Dependency Notes:	
Semantic Notes:	
Comments:	
Notes:	This segment provides the total number of equipment reported in this message. In case there are only general cargo shipments mentioned, then send 0 (zero).
	Example: The message reports 20 units.
	CNT+16:20'
	Example: The message reports 3 general cargo shipments.
	CNT+16:0'

Data Element Summary

<u>Data Element</u>	<u>Component Element</u>	<u>Name</u>	<u>Base Attributes</u>		<u>User Attributes</u>
C270		CONTROL	M	1	M
		Control total for checking integrity of a message or part of a message.			
	6069	Control total type code qualifier	M	an..3	M
		Code qualifying the type of control of hash total.			
		Refer to D.16A Data Element Dictionary for acceptable code values.			
	6066	Control total quantity	M	n..18	M
		To specify the value of a control quantity.			
	6411	Measurement unit code	C	an..8	X

Segment: **UNT** Message Trailer
Position: 00730
Group:
Level: 0
Usage: Mandatory
Max Use: 1
Purpose: A service segment ending a message, giving the total number of segments in the message (including the UNH & UNT) and the control reference number of the message.

Dependency Notes:**Semantic Notes:****Comments:****Notes:** Example: 26 sent segments, message envelope reference "1357924680"

UNT+26+1357924680'

Data Element Summary

<u>Data Element</u>	<u>Component Element</u>	<u>Name</u>	<u>Base Attributes</u>			<u>User Attributes</u>
0074		NUMBER OF SEGMENTS IN A MESSAGE	M	1	n..6	M
		Control count of number of segments in a message.				
0062		MESSAGE REFERENCE NUMBER	M	1	an..14	M
		Unique message reference assigned by the sender.				