

COARRI Container Discharge/Loading Report Message

Introduction:

A message by which the container terminal reports that the containers specified have been discharged from a seagoing vessel (discharged as ordered, overlanded or shortlanded), or have been loaded into a seagoing vessel.

This message is part of a total set of container-related messages. These messages serve to facilitate the intermodal handling of containers by streamlining the information exchange. The business scenario for the container messages is clarified in a separate document, called: 'Guide to the scenario of EDIFACT container messages'.

Notes:

This Message Implementation Guideline (MIG) has been developed by JUL Project Team, in the context of the JUL Portuguese Project (www.projeto-jul.pt).

In this context, the following items are considered. The document provides the definition of the Cargo Loading/Discharge report message to be used in electronic data interchange with Port Terminals, cargo operators or their representatives, related with cargo movements in Portuguese ports.

Due to the existence of current implementations of this message in some Portuguese ports, the document signals where backward compatibility is relevant. However, new or updated implementations must follow this MIG and shall ignore these specific exceptions.

Additionally to the UN/EDIFACT definition and scope, this MIG is used also applied to general cargo.

This MIG provides guidance as to the recommended usage of codes, qualifiers, data elements, composites, segments and groups of segments in the D.16A COARRI. The intention is to assist developers to ensure consistent use of the COARRI message throughout the worldwide trade and transport community.

The MIG was elaborated considering the following references:

- UN/EDIFACT D.16A COARRI
- UN/EDIFACT D.16A Data Element Codes
- ISO 6346, 2nd and 3rd editions, and amendments – Freight containers – Coding, identification and marking
- UN/ECE Recommendation 7 – Numerical Representation of Dates, Time, and Periods of Time
- UN/ECE Recommendation 16 (3rd edition) – UN/LOCODE – Codes for Ports and Other Locations
- UN/ECE Recommendation 19 (2nd edition) – Codes for Modes of Transport
- UN/ECE Recommendation 20 – Codes for Units of Measure Used in International Trade
- ITIGG: General Recommendations Version 2.1 March 2001
- SMDG MIG COARRI Version 2.1-3

Being based on SMDG MIG does not mean a full adoption of SMDG proposals. In some situations, groups,

segments, elements or codes are not applicable. In other situations, groups, segments, elements or codes are included but notes are present to inform the purpose of SMDG proposal compability.

Notes on this matter will be in font Courier New 8pt Bold.

Usage indicators in this MIG follow ITIGG Recommendation D4/G44.

Status Indicators (“M” and “C”) form part of the UN/EDIFACT standard and indicate a minimum requirement to fulfil the needs of the message structure. They are not adequate for implementation purposes. The Status Indicators are:

Value Description

M Mandatory

The entity marked as such must appear in all messages, and apply to these messages as well as to any associated implementation guidelines (and consequently is also a Usage Indicator).

C Conditional

The entity is used by agreement between trading partners.

Usage Indicators are implementation related indicators that further detail the use of “Conditional” Status Indicators. Usage Indicators are applied at all levels of the guidelines and shown adjacent to data items such as segment groups, segments, composite data elements and simple data elements. They dictate the agreed usage of the data items or entities. The Usage Indicators are:

Value Description

M Mandatory

Indicates the item is mandatory in the UN/EDIFACT message.

R Required

Indicates the item must be transmitted in this implementation.

D Dependent

Indicates that the use of the item is depending on a well-defined condition or set of conditions. These conditions must be clearly specified in the relevant implementation guideline.

O Optional

Indicates that this item is at the need or discretion of both trading partners.

X Not Used

Indicates that this item is not to be used in this implementation.

Where an item within a segment group, segment or composite data element is marked with Usage Indicators “M” or “R”, but the segment group, segment or composite data element has been marked “O” or “D” (or for that matter “X”), the item is only to be transmitted when the segment group, segment or composite of which it is a part, is used.

Examples in the text are just related with the segments where they appear. They are not necessarily related between each other.

***** Special Note On General Cargo**

The COARRI message was not designed to report loading/discharge of general cargo. For this reason, this MIG defines a segments' and elements' usage that supports a mechanism to represent general cargo movements. This is described in SG6(EQD) notes.

***** Special Note On Local Usage**

Due to the diverse realities of the Portuguese ports and the stakeholders operating in them, it is necessary to define local rules, codes, etc. But this needs to be done considering the harmonization framework that this document defines.

In order to avoid a heavy guideline where all local port specifics are expressed, the approach is to redirect the reader to an external document when applicable. The external document should be elaborated by the each port when justified.

However all stakeholders should have the following in mind. The local specifications are complementary to this document, they are used to document current implementations, and should not be a justification for new or updated implementations avoid the full adoption of this document.

Due to the requirement of Terminal Operators in the role of Depositary, to report equipment of transport or general cargo movements into/from vessels to Customs Summary Declaration System using electronic messages, this Message Implementation Guideline will refer to the elements of the message to be sent to Customs, related directly or indirectly with EDIFACT elements.

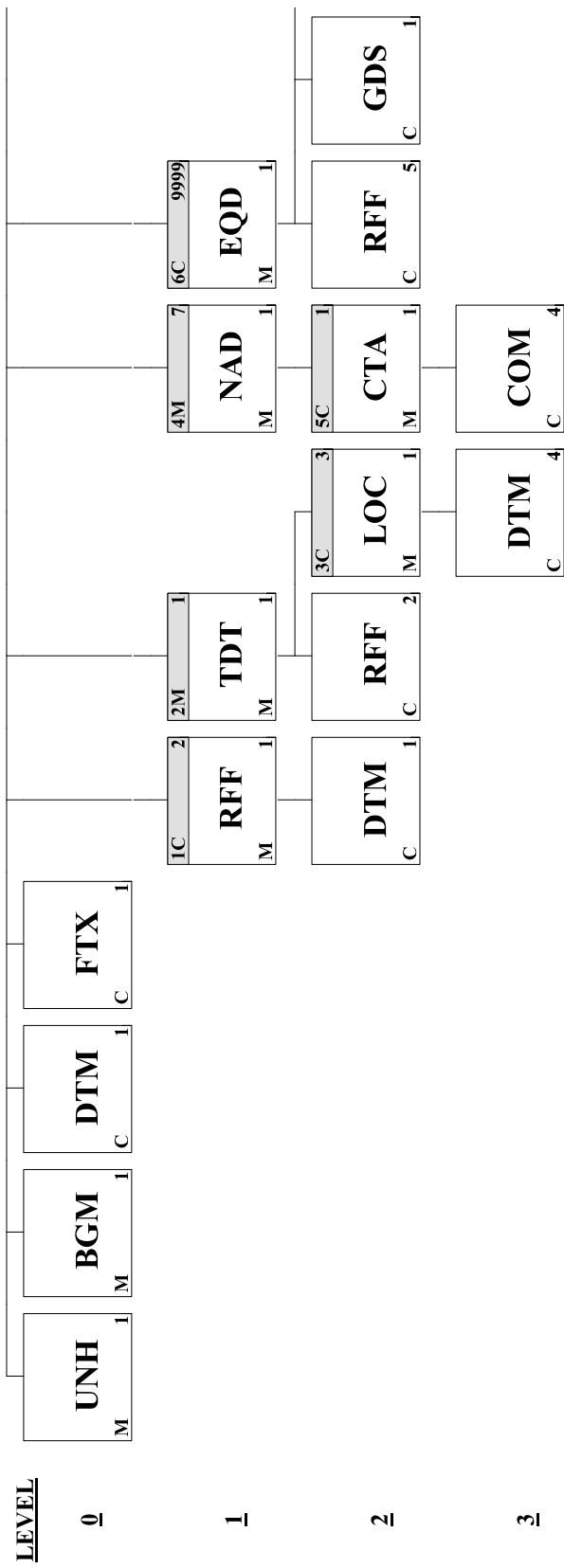
In the context of COARRI the messages to Customs are known by SeaWarehouseKeeperContainersReport and SeaWarehouseKeeperCargoReport.

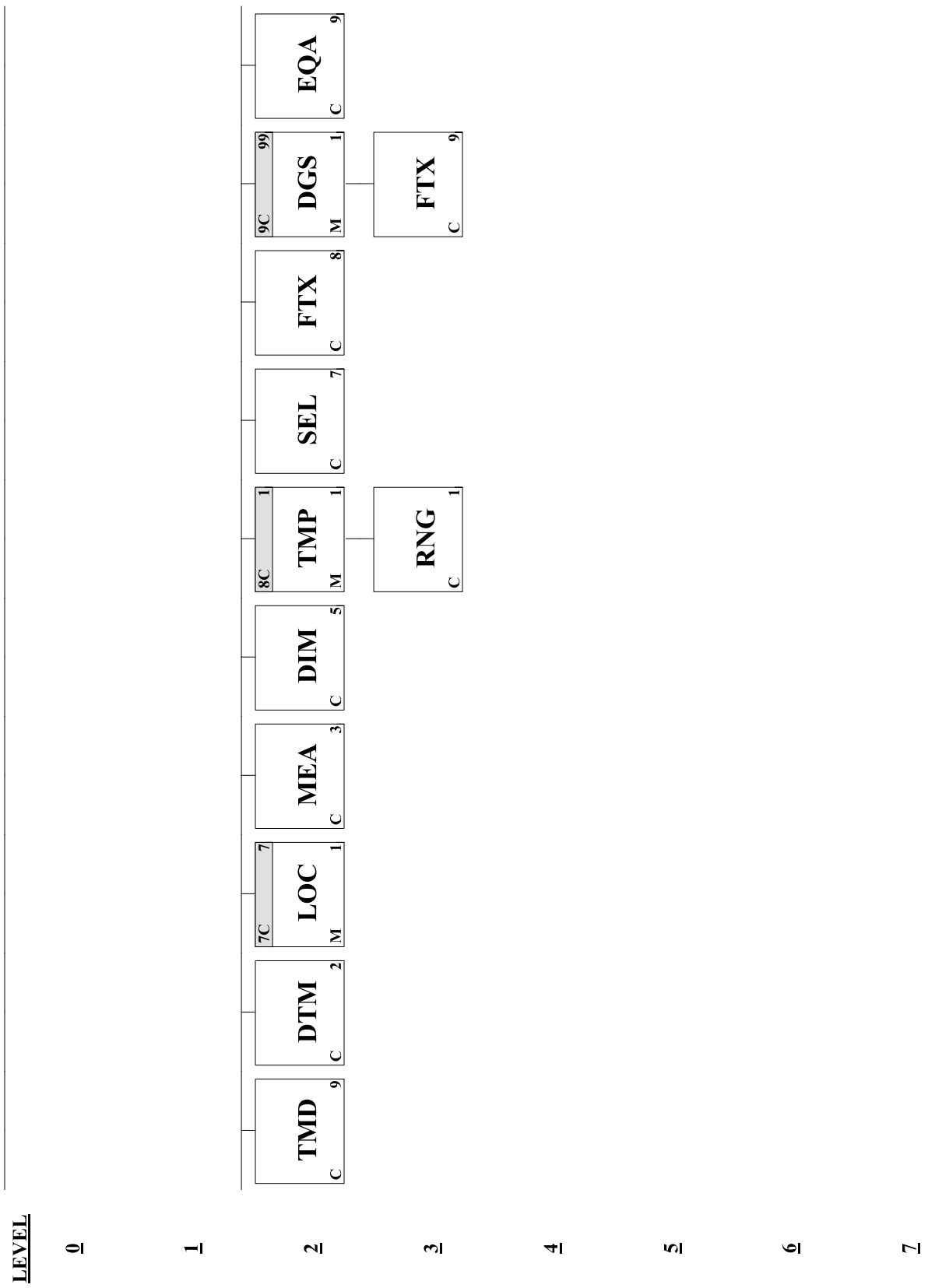
Most of the elements in the above mentioned messages are common to both. When an element is specific to just one of them, that will be mentioned.

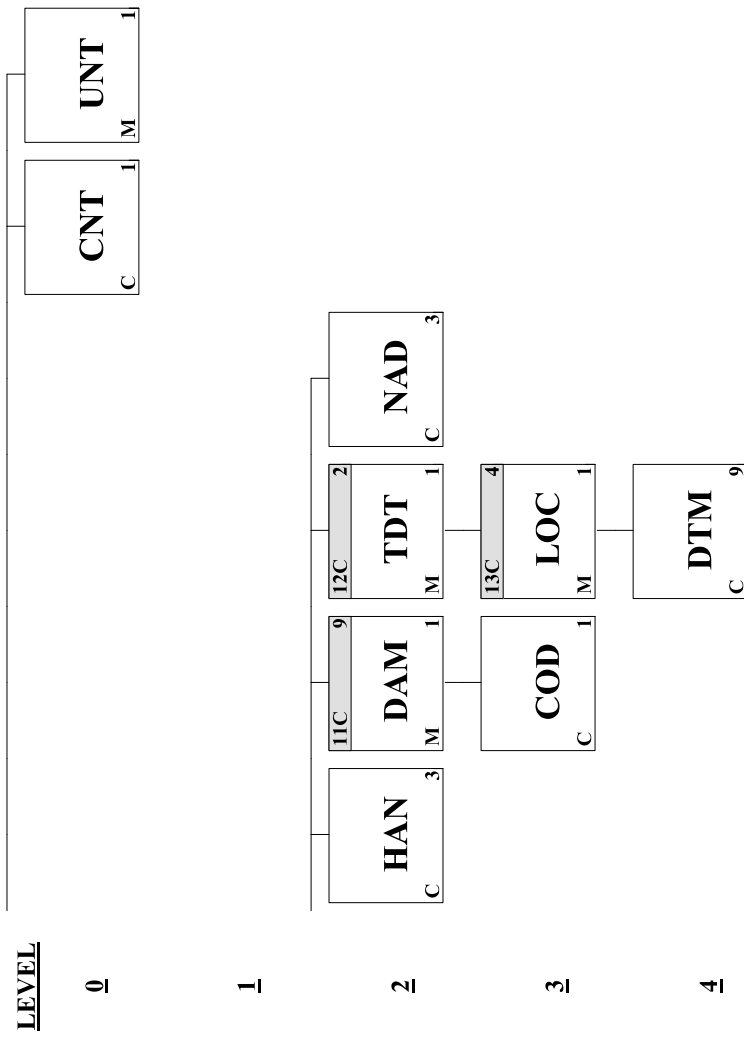
The notes on this matter will be in italic.

<u>Page No.</u>	<u>Pos. No.</u>	<u>Seg. ID</u>	<u>Name</u>	<u>Base Guide</u>	<u>User Status</u>	<u>Max.Use</u>	<u>Group Repeat</u>	<u>Notes and Comments</u>
8	00010	UNH	Message Header	M	M	1		
10	00020	BGM	Beginning of Message	M	M	1		
13	00030	DTM	Date/Time/Period	C	O	1		
14	00040	FTX	Free Text	C	O	1		
	00050		Segment Group 1: RFF-DTM	C	O		2	
17	00060	RFF	Reference	M	M	1		
19	00070	DTM	Date/Time/Period	C	O	1		
	00080		Segment Group 2: TDT-RFF-SG3	M	M		1	
21	00090	TDT	Transport Information	M	M	1		
25	00110	RFF	Reference	C	O	2		
	00120		Segment Group 3: LOC-DTM	C	O		3	
28	00130	LOC	Place/Location Identification	M	M	1		
30	00140	DTM	Date/Time/Period	C	O	4		

	00150		Segment Group 4: NAD-SG5	M	M	7
32	00160	NAD	Name and Address	M	M	1
	00170		Segment Group 5: CTA-COM	C	O	1
36	00180	CTA	Contact Information	M	M	1
37	00190	COM	Communication Contact	C	R	4
	00200		Segment Group 6: EQD-RFF-GDS-TMD -DTM-SG7-MEA-DIM-SG8-SEL-FTX -SG9-EQA-HAN-SG11-SG12-NAD	C	O	9999
41	00210	EQD	Equipment Details	M	M	1
45	00220	RFF	Reference	C	O	5
49	00230	GDS	Nature of Cargo	C	D	1
51	00240	TMD	Transport Movement Details	C	O	9
52	00250	DTM	Date/Time/Period	C	R	2
	00260		Segment Group 7: LOC	C	O	7
56	00270	LOC	Place/Location Identification	M	M	1
60	00290	MEA	Measurements	C	R	3
63	00300	DIM	Dimensions	C	O	5
	00310		Segment Group 8: TMP-RNG	C	D	1
66	00320	TMP	Temperature	M	M	1
67	00330	RNG	Range Details	C	O	1
68	00340	SEL	Seal Number	C	D	7
70	00350	FTX	Free Text	C	O	8
	00370		Segment Group 9: DGS-FTX	C	O	99
75	00380	DGS	Dangerous Goods	M	M	1
78	00390	FTX	Free Text	C	O	9
80	00440	EQA	Attached Equipment	C	O	9
81	00470	HAN	Handling Instructions	C	O	3
	00480		Segment Group 11: DAM-COD	C	O	9
85	00490	DAM	Damage	M	M	1
87	00500	COD	Component Details	C	O	1
	00510		Segment Group 12: TDT-SG13	C	O	2
89	00520	TDT	Transport Information	M	M	1
	00540		Segment Group 13: LOC-DTM	C	O	4
94	00550	LOC	Place/Location Identification	M	M	1
97	00560	DTM	Date/Time/Period	C	O	9
98	00570	NAD	Name and Address	C	O	3
102	00580	CNT	Control Total	C	R	1
103	00590	UNT	Message Trailer	M	M	1







Segment: **UNH** Message Header
Position: 00010
Group:
Level: 0
Usage: Mandatory
Max Use: 1
Purpose: A service segment starting and uniquely identifying a message. The message type code for the Container discharge/loading report message is COARRI.
 Note: Container discharge/loading report messages conforming to this document must contain the following data in segment UNH, composite S009:
 Data element 0065 COARRI 0052 D 0054 16A 0051
 UN

Dependency Notes:**Semantic Notes:****Comments:**

Notes: Example: Message envelope number "1357924680", type "COARRI", UN/Edifact directory "D16A"

UNH+1357924680+COARRI:D:16A:UN'

Data Element Summary

<u>Data Element</u>	<u>Component Element</u>	<u>Name</u>	<u>Base Attributes</u>		<u>User Attributes</u>
0062		MESSAGE REFERENCE NUMBER	M	1 an..14	M
		Unique message reference assigned by the sender.			
S009		MESSAGE IDENTIFIER	M	1	M
		Identification of the type, version etc. of the message being interchanged.			
	0065	Message type identifier	M	an..6	M
		Code identifying a type of message and assigned by its controlling agency.			
		COARRI Container discharge/loading report message			
	0052	Message type version number	M	an..3	M
		Version number of a message type.			
		D Draft version/UN/EDIFACT Directory			
	0054	Message type release number	M	an..3	M
		Release number within the current message type version number (0052).			
		16A Release 2016 - A			
		95B Release 1995 - B			
		Only for backward compatibility.			
	0051	Controlling agency	M	an..2	M
		Code identifying the agency controlling the specification, maintenance and publication of the message type.			
		UN UN/CEFACT			
	0057	Association assigned code	C	an..6	O
		Code, assigned by the association responsible for the design and maintenance of the			

message type concerned, which further identifies the message.

Only for compatibility with SMDG proposal. It will not be processed by JUL system.

0068	COMMON ACCESS REFERENCE	C	1	an..35	O
	Reference serving as a key to relate all subsequent transfers of data to the same business case or file.				
	Only for compatibility with SMDG proposal. It will not be processed by JUL system.				
S010	STATUS OF THE TRANSFER	C	1		X
	Statement that the message is one in a sequence of transfers relating to the same topic.				
0070	Sequence message transfer number	M		n..2	X
	Number assigned by the sender indicating that the message is an addition or change of a previously sent message relating to the same topic.				
0073	First/last sequence message transfer indication	C		a1	X
	Indication used for the first and last message in a sequence of the same type of message relating to the same topic.				

Segment: **BGM** Beginning of Message
Position: 00020
Group:
Level: 0
Usage: Mandatory
Max Use: 1
Purpose: A segment to indicate the beginning of a message and to transmit identifying number and the further specification of the message type (in data element 1001: Document name code), such as Loading report, Discharge report.

Dependency Notes:**Semantic Notes:****Comments:****Notes:**

Note on code '24' in DE:1001. When equipment of transport discharge is being report in a near realtime scenario, it is possible the exact location in the terminal area is unknown. By using a restow report ('24' code), an original message can be sent to update information regarding the location. The alternative is to send a discharge report message with function '4' to update the discharge report itself.

Data element 1225 shall be used according to the following rules:

- Codes '2' and '3' are to be used when a equipment is added or deleted from the report. This is only admissible in case of a mistake in the equipment identification (this is, in data element EQD:8260) and/or equipment size/type (this is, element EQD:8155). For each message declaring removed equipment, it must exist a message with the same number of added equipment. This is, first the wrongly identified equipment must be removed, then the correctly identified equipment must be added. Only information about added/deleted equipment shall be specified, according to the rules defined.

- Code '4' shall be used to refer changes in EQD segment (other than the above ones) or at any other segment of Group 6. For instance, a transshipping equipment that has the port of discharge changed. Only information about changed equipment or general cargo shipment shall be specified, according to the rules defined.

- Code '9' indicates the original message. So, indicates the first version of the discharge/loading report. The arrival of a message with this function corresponds to the delivery of the document. Only after the correct reception and integration of this message in the system, the receiver is aware of the document. For each document only on message with this function can exist.

- A previously sent report can not be canceled.

Example: Transport equipment loading report message LR7544097, original.

BGM+122+LR75440947+9'

Data Element Summary**Data Component****Base****User**

<u>Element</u>	<u>Element</u>	<u>Name</u>	<u>Attributes</u>	<u>Attributes</u>
C002		DOCUMENT/MESSAGE NAME	C 1	R
		Identification of a type of document/message by code or name. Code preferred.		
	1001	Document name code	C an..3	R
		Code specifying the document name.		
		<i>The value will be used to infer the value to use in "Movement Type" element.</i>		
	24	Restow		
		Only use to report position to which equipment or cargo is restowed (new stowage position). Position from which equipment is restowed is not to be reported.		
	98	Arrival information		
		Only for backward compatibility. It will be treated like '119'.		
	119	Transport discharge report		
		<i>Use value "Unload".</i>		
	122	Transport loading report		
		<i>Use value "Load".</i>		
	270	Delivery note		
		Only for backward compatibility. It will be treated like '122'.		
	998	Previous Customs document/message		
		Only for backward compatibility. It will be treated like '119'.		
	999	Loading Report		
		Only for backward compatibility. It will be treated like '122'.		
	1131	Code list identification code	C an..17	X
	3055	Code list responsible agency code	C an..3	X
	1000	Document name	C an..35	X
C106		DOCUMENT/MESSAGE IDENTIFICATION	C 1	R
		Identification of a document/message by its number and eventually its version or revision.		
	1004	Document identifier	C an..70	R
		To identify a document.		
		Identification of the message. Not of the document.		
		<i>The value will be used in "Message Identification" element.</i>		
	1056	Version identifier	C an..9	X
	1060	Revision identifier	C an..6	X
1225		MESSAGE FUNCTION CODE	C 1 an..3	R

Code indicating the function of the message.

If not expressed in SG6:FTX:C108:4440 (1st occurrence) when SG6:FTX:4451 = 'WHI', the value in this element will be used to infer the value to put in the "Action" element inside the "Item" element, according to the correspondance in the below list.

1	Cancellation	
	<i>Use value "Remove".</i>	
2	Addition	
	<i>Use value "CreateAndFinalize".</i>	
3	Deletion	
	<i>Use value "Remove".</i>	
4	Change	
	<i>Use value "UpdateAndFinalize".</i>	
9	Original	
	<i>Use value "CreateAndFinalize".</i>	
55	Notification only	
	Used to report the end of operations and that no transport equipment or general cargo data is present in the message. See notes of FTX(00040) segment.	

4343	RESPONSE TYPE CODE	C	1	an..3	O
	Code specifying the type of acknowledgment required or transmitted.				
	Usage complemented in local document if mentioned in that document.				
	AB Message acknowledgement				
1373	DOCUMENT STATUS CODE	C	1	an..3	X
3453	LANGUAGE NAME CODE	C	1	an..3	X

Segment: **DTM** Date/Time/Period
Position: 00030
Group:
Level: 0
Usage: Conditional (Optional)
Max Use: 1
Purpose: A segment to indicate a date and/or time applying to the whole message, such as date and time of document or message issue.

Dependency Notes:**Semantic Notes:****Comments:**

Notes: Usage complemented in local document if mentioned in that document.

The usage of this segment is to provide the date/time at which the sender creates the message. In this case DE:2005 will be '137'.

Example: Message issued on 2002/02/01 at 14:21

DTM+137:200202011421:203'

Data Element Summary

<u>Data Element</u>	<u>Component Element</u>	<u>Name</u>	<u>Base Attributes</u>		<u>User Attributes</u>
C507		DATE/TIME/PERIOD	M	1	M
		Date and/or time, or period relevant to the specified date/time/period type.			
	2005	Date or time or period function code qualifier	M	an..3	M
		Code qualifying the function of a date, time or period.			
		137 Document issue date time			
	2380	Date or time or period text	C	an..35	R
		The value of a date, a date and time, a time or of a period in a specified representation.			
		<i>The value will be used in "Message Date" element.</i>			
	2379	Date or time or period format code	C	an..3	R
		Code specifying the representation of a date, time or period.			
		203 CCYYMMDDHHMM			

Segment: **FTX** Free Text
Position: 00040
Group:
Level: 0
Usage: Conditional (Optional)
Max Use: 1
Purpose: A segment to specify free form or processable supplementary information, such as:
- change information

Dependency Notes:**Semantic Notes:****Comments:**

Notes: Usage complemented in local document if mentioned in that document.

When Load and/or Unload operations of the vessel terminate, this segment should be used to report this event.

The information is present in 2nd and 3rd 4440 elements of C108.

The 1st element 4440 is only present for syntax purposes.

If only this information is being send, then BGM:1225 should have code 55.

Example: end of unloading operations

FTX+WHI+++NA::EndOfOperationsUnload'

The values in second and third elements 4440 are to be send in "Action" element at header level.

However, the following care must be taken. The FTX segment can signal the termination of both operations (Load, Unload) in a single segment occurrence. If this is the case, then two different occurrences of the "Action" element must exist.

Data Element Summary

Data Element	Component Element	Name	Base Attributes			User Attributes
4451		TEXT SUBJECT CODE QUALIFIER	M	1	an..3	M
		Code qualifying the subject of the text.				
		WHI Warehouse instruction/information				
4453		FREE TEXT FUNCTION CODE	C	1	an..3	X
C107		TEXT REFERENCE	C	1		X
		Coded reference to a standard text and its source.				
	4441	Free text description code	M		an..17	X
		Code specifying free form text.				

	1131	Code list identification code	C	an..17	X
		Code identifying a user or association maintained code list.			
	3055	Code list responsible agency code	C	an..3	X
		Code specifying the agency responsible for a code list.			
C108		TEXT LITERAL	C	1	R
		Free text; one to five lines.			
	4440	Free text	M	an..512	M
		Free form text.			
		The value in this element is just to comply with syntax.			
		Value to use: "NA"			
	4440	Free text	C	an..512	O
		Free form text.			
		This element is to inform of the ending of loading operations.			
		Use value "EndOfOperationsLoad".			
	4440	Free text	C	an..512	O
		Free form text.			
		This element is to inform of the ending of unloading operations.			
		Use value "EndOfOperationsUnload".			
	4440	Free text	C	an..512	X
	4440	Free text	C	an..512	X
3453		LANGUAGE NAME CODE	C	1 an..3	X
4447		FREE TEXT FORMAT CODE	C	1 an..3	X

Group:	RFF Segment Group 1: Reference
Position:	00050
Group:	
Level:	1
Usage:	Conditional (Optional)
Max Use:	2
Purpose:	A group of segments to specify a reference relating to the whole message, and its date and/or time.
Notes:	Usage complemented in local document if mentioned in that document.
	This group has two functions.
	If the message reflects a new document, it means it has the function "Original" or "Notification Only", and the group identifies the document that is being sent.
	In all other cases, it shall be used to reference to a previously issued message of the document at stake.
	When referring to previous messages, the methodology follows ITIGG's JM4/208 recommendation as stated in document JM4/ITIGG/96.101/v.131, with the exception of the inclusion of date information.
	For referenced message identification, segments RFF and DTM (if present) of this group will be used.
	Both situations can be present in the message simultaneously when the message is not "Original" nor "Notification Only".

Segment Summary

	Pos.	Seg.		Req.	Max.	Group:
	No.	ID	Name	Des.	Use	Repeat
M	00060	RFF	Reference	M	1	
O	00070	DTM	Date/Time/Period	C	1	

Segment: **RFF** Reference
Position: 00060 (Trigger Segment)
Group: Segment Group 1 (Reference) Conditional (Optional)
Level: 1
Usage: Mandatory
Max Use: 1
Purpose: A segment to express a reference which applies to the entire message, such as: - container discharge/loading order reference - reference to previous message

Dependency Notes:**Semantic Notes:****Comments:**

Notes: Example: Operator's document 2004/002546-1.

RFF+CV:2004/002546-1'

Example: Reference to a previous messages identified by DR50938803.

RFF+ACW:DR50938803'

Data Element Summary

<u>Data Element</u>	<u>Component Element</u>	<u>Name</u>	<u>Base Attributes</u>		<u>User Attributes</u>
C506		REFERENCE	M	1	M
		Identification of a reference.			
	1153	Reference code qualifier	M	an..3	M
		Code qualifying a reference.			
	AAY	Carrier's agent reference number Only for compatibility with SMDG proposal. It will be processed like 'CV'.			
	ACA	Cargo acceptance order reference number Only for compatibility with SMDG proposal. It will be processed like 'CV'.			
	ACW	Reference number to previous message Use when BGM:1225 <> '9'.			
	AKA	Container disposition order reference number Only for compatibility with SMDG proposal. It will be processed like 'CV'.			
	ARJ	Personal identity card number Only for compatibility with SMDG proposal. It will be ignored by the JUL system.			
	ATX	Transport equipment acceptance order reference Only for compatibility with SMDG proposal. It will be processed like 'CV'.			
	ATY	Transport equipment release order reference Only for compatibility with SMDG proposal. It will be processed like 'CV'.			

BM	Bill of lading number Only for compatibility with SMDG proposal. It will be processed like 'CV'.
BN	Consignment identifier, carrier assigned Only for compatibility with SMDG proposal. It will be processed like 'CV'.
CN	Carrier's reference number Only for compatibility with SMDG proposal. It will be processed like 'CV'.
CV	Container operators reference number Use when BGM:1225 = 9.
RE	Release number Only for compatibility with SMDG proposal. It will be processed like 'CV'.

1154	Reference identifier	C	an..70	R
	Identifies a reference. If DE:1153 = 'ACW' then send the identification of the previous message (value in BGM:1004 of the previous message) of this document.			
1156	Document line identifier	C	an..6	X
1056	Version identifier	C	an..9	X
1060	Revision identifier	C	an..6	X

Segment: **DTM** Date/Time/Period
Position: 00070
Group: Segment Group 1 (Reference) Conditional (Optional)
Level: 2
Usage: Conditional (Optional)
Max Use: 1
Purpose: A segment to indicate date and/or time related to the reference.

Dependency Notes:**Semantic Notes:****Comments:**

Notes: Usage complemented in local document if mentioned in that document.

The complete meaning of this date depends of the type of reference in the previous RFF segment, stated in RFF:C506:1153 data element.

Example: Date/time of the reference: "2003/10/08 - 10:15"

DTM+171:200310081015:203'

Data Element Summary

<u>Data Element</u>	<u>Component Element</u>	<u>Name</u>	<u>Base Attributes</u>		<u>User Attributes</u>
C507		DATE/TIME/PERIOD	M	1	M
		Date and/or time, or period relevant to the specified date/time/period type.			
	2005	Date or time or period function code qualifier	M	an..3	M
		Code qualifying the function of a date, time or period.			
		171 Reference date/time			
	2380	Date or time or period text	C	an..35	R
		The value of a date, a date and time, a time or of a period in a specified representation.			
	2379	Date or time or period format code	C	an..3	R
		Code specifying the representation of a date, time or period.			
		203 CCYYMMDDHHMM			

Group:	TDT Segment Group 2: Transport Information
Position:	00080
Group:	
Level:	1
Usage:	Mandatory
Max Use:	1
Purpose:	A group of segments to indicate the main carriage means of transport.
Notes:	By default, equipment of transport or general cargo enters the port area by land in order to be loaded into a ship, or leaves the port area by land because they were discharged from a ship, except in transshipping situations where they enter and leave by sea.
	On situations where a Port Community System (PCS) is in place and contains vessel call information gathered and identified by a vessel call identification (also known as visit id), then these messages are supposed not to contain any information regarding vessels.
	The connection between these reports and the vessel call is made by referring the PCS vessel call identification (visit id) in the RFF segment included in this group.
	The vessel call must had been previously declared/opened in the PCS system, and will be matched with Customs Process Id (Contramarca).
	However, if the message sender does not have visit id in its system, it must use additional data about the vessel and the call, to allow the correct matching between the message and the vessel call. This scenario is highly not advised.

The visit id that will be determined from the data in these groups will be used to infer from the PCS, the Contramarca value to be used in "Customs Reference Number" element.

Segment Summary

	Pos.	Seg.		Req.	Max.	Group:
	No.	ID	Name	Des.	Use	Repeat
M	00090	TDT	Transport Information	M	1	
O	00110	RFF	Reference	C	2	
	00120		Segment Group 3: Place/Location Identification	C		3

Segment: **TDT** **Transport Information**
Position: 00090 (Trigger Segment)
Group: Segment Group 2 (Transport Information) Mandatory
Level: 1
Usage: Mandatory
Max Use: 1
Purpose: A segment identifying the voyage of the vessel relevant to the message (main transport).

Dependency Notes:**Semantic Notes:****Comments:**

Notes: Usage complemented in local document if mentioned in that document.

Example: Main carriage transport, maritime, voyage number 0220, shipping company is Maersk, vessel SL PRIDE with IMO 8212661.

TDT+20+0220+1+++MAE:172:20:MAERSK+++8212661:146:11:SL PRIDE'

Data Element Summary

<u>Data Element</u>	<u>Component Element</u>	<u>Name</u>	<u>Base Attributes</u>			<u>User Attributes</u>
8051		TRANSPORT STAGE CODE QUALIFIER	M	1	an..3	M
		Code qualifying a specific stage of transport.				
		20 Main-carriage transport				
8028		MEANS OF TRANSPORT JOURNEY IDENTIFIER	C	1	an..17	D
		To identify a journey of a means of transport.				
		Usage complemented in local document if mentioned in that document.				
		Vessel operator's voyage number.				
		Either this element or SG2:RFF can be used to specify a voyage number, or none of them are needed in case there is an occurrence of SG2:RFF referring the visit id.				
C220		MODE OF TRANSPORT	C	1		R
		Method of transport code or name. Code preferred.				
	8067	Transport mode name code	C		an..3	R
		Code specifying the name of a mode of transport.				
		UN Recommendation 19 - Codes for Modes of Transport.				
		1 Maritime				
	8066	Transport mode name	C		an..17	X
C001		TRANSPORT MEANS	C	1		O
		Code and/or name identifying the type of means of transport.				
		Usage complemented in local document if mentioned in that document.				
	8179	Transport means description code	C		an..8	O

Code specifying the means of transport.

UN Recommendation 28 - Code for Types of Means of Transport.

The usage of the recommendation 28 is for compatibility with SMDG proposal. However local codes may apply.

	1131	Code list identification code	C	an..17	X
	3055	Code list responsible agency code	C	an..3	X
	8178	Transport means description	C	an..17	O
		Free form description of the means of transport.			
		Only for compatibility with SMDG proposal. It will not be processed by JUL system.			
C040		CARRIER	C	1	O
		Identification of a carrier by code and/or by name. Code preferred.			
		Usage complemented in local document if mentioned in that document.			
		SMDG proposal states that this element is Required. However, it seems that this is tightly connected to the user attribute of element 3127.			
		An alternative perspective is in this MIG. This element should be Optional and occurs if either 3127 or 3126, or both, occur.			
	3127	Carrier identifier	C	an..17	O
		To identify a carrier.			
		Vessel operator's code.			
	1131	Code list identification code	C	an..17	O
		Code identifying a user or association maintained code list.			
		Usage complemented in local document if mentioned in that document.			
		172 Carriers			
	3055	Code list responsible agency code	C	an..3	O
		Code specifying the agency responsible for a code list.			
		Only for backward compability.			
		20 BIC (Bureau International des Containeurs)			
		87 Assigned by carrier			
		166 US, National Motor Freight Classification Association			
		184 AU, ACOS (Australian Chamber of Shipping)			
		Only for compatibility with SMDG proposal. It will not be processed by JUL system.			
		SMD SMDG (Shipplanning Message Development Group)			
		Only for compatibility with SMDG proposal. It will not be processed by JUL system.			
		ZZZ Mutually defined			
	3126	Carrier name	C	an..35	O
		Name of a carrier.			
		Only for compatibility with SMDG proposal. It will not be processed by JUL system.			
8101		TRANSIT DIRECTION INDICATOR CODE	C	1 an..3	X
C401		EXCESS TRANSPORTATION INFORMATION	C	1	X

		To provide details of reason for, and responsibility for, use of transportation other than normally utilized.			
	8457	Excess transportation reason code	M	an..3	X
		Code specifying the reason for excess transportation.			
	8459	Excess transportation responsibility code	M	an..3	X
		Code specifying the responsibility for excess transportation.			
	7130	Customer shipment authorisation identifier	C	an..17	X
		To identify the authorisation to ship issued by the customer.			
C222		TRANSPORT IDENTIFICATION	C	1	O
		Code and/or name identifying the means of transport.			
		Usage complemented in local document if mentioned in that document.			
		SMDG proposal states that this element is Dependent. However, it seems that this is tightly connect to the user attribute of element 8213.			
		An alternative perspective is in this MIG. This element should be Optional and occurs if either 8213 or 8212, or both, occur.			
	8213	Transport means identification name identifier	C	an..35	O
		Identifies the name of the transport means.			
		Identification of the means of transport by number.			
		Either this element or SG2:RFF must be used to specify a vessel identification, or none of them are needed in case there is an occurrence of SG2:RFF referring the visit id.			
	1131	Code list identification code	C	an..17	O
		Code identifying a user or association maintained code list.			
		103	Call sign directory		
			Only for backward compability.		
		146	Means of transport identification		
			Only for compatibility with SMDG proposal.		
	3055	Code list responsible agency code	C	an..3	O
		Code specifying the agency responsible for a code list.			
		11	Lloyd's register of shipping		
			Only for compatibility with SMDG proposal.		
	8212	Transport means identification name	C	an..70	O
		Name identifying a means of transport.			
	8453	Transport means nationality code	C	an..3	O
		Code specifying the nationality of a means of transport.			
		Flag of Means of Transport (ISO 3166 country code, 2-alpha).			
8281		TRANSPORT MEANS OWNERSHIP INDICATOR CODE	C	1 an..3	X
C003		POWER TYPE	C	1	X
		To specify the type of power.			

7041	Power type code	C	an..3	X
	Code indicating the type of power.			
1131	Code list identification code	C	an..17	X
	Code identifying a user or association maintained code list.			
3055	Code list responsible agency code	C	an..3	X
	Code specifying the agency responsible for a code list.			
7040	Power type description	C	an..17	X
	Description of the type of power.			

Segment: **RFF** Reference
Position: 00110
Group: Segment Group 2 (Transport Information) Mandatory
Level: 2
Usage: Conditional (Optional)
Max Use: 2
Purpose: A segment identifying a relevant reference number, such as: - shipping -
 syndicate - marketing organization - conference code

Dependency Notes:**Semantic Notes:****Comments:**

Notes: Usage complemented in local document if mentioned in that document.

Although this segment is marked as optional, in the JUL implementation this is the preferred way to identify a visit id (vessel call). The usage is to put this id in DE:1154 associated with qualifier 'ATZ' in 1153. This identification is provided by the JUL system.

Example: Leixões visit id PTLEI118001032

RFF+ATZ:PTLEI118001032'

Example: Additional voyage number 7199

RFF+VON:7199'

Data Element Summary

Data Element	Component Element	Name	Base Attributes		User Attributes
C506		REFERENCE	M	1	M
		Identification of a reference.			
	1153	Reference code qualifier	M	an..3	M
		Code qualifying a reference.			
		ATZ Ship's stay reference number			
		Corresponding to the Visit Id.			
		MA Ship notice/manifest number			
		Only for compatibility with SMDG proposal. It will not be processed by JUL system.			
		VM Vessel identifier			
		Only for compatibility with SMDG proposal. It will not be processed by JUL system.			
		VON Voyage number			
	1154	Reference identifier	C	an..70	R
		Identifies a reference.			
		Visit id, if C506:1153 = 'ATZ'.			

Alternative (non vessel operator's) voyage number (if C506:1153 = 'VON') as present in the Port Authority System.

1156	Document line identifier	C	an..6	X
1056	Version identifier	C	an..9	X
1060	Revision identifier	C	an..6	X

Group: **LOC** Segment Group 3: Place/Location Identification
Position: 00120
Group: Segment Group 2 (Transport Information) Mandatory
Level: 2
Usage: Conditional (Optional)
Max Use: 3
Purpose: A segment group to identify locations related to the means of transport.
Notes: Usage complemented in local document if mentioned in that document.

This group is to be used when the visit id is not known by the message sender since the information provided will help to identify the correct vessel call.

To determine the visit id for this vessel call, the terminal/berth where the vessel operated and ETA or ETD dates are used.

Segment Summary

	Pos.	Seg.		Req.	Max.	Group:
	<u>No.</u>	<u>ID</u>	<u>Name</u>	<u>Des.</u>	<u>Use</u>	<u>Repeat</u>
M	00130	LOC	Place/Location Identification	M	1	
O	00140	DTM	Date/Time/Period	C	4	

Segment: **LOC** Place/Location Identification
Position: 00130 (Trigger Segment)
Group: Segment Group 3 (Place/Location Identification) Conditional (Optional)
Level: 2
Usage: Mandatory
Max Use: 1
Purpose: A segment to specify a location related to the means of transport such as places and ports of arrival and departure.

Dependency Notes:**Semantic Notes:****Comments:**

Notes: Example: Port of loading Leixoes, North Container Terminal

LOC+9+PTLEI:139:6+TCN'

Data Element Summary

<u>Data Element</u>	<u>Component Element</u>	<u>Name</u>	<u>Base Attributes</u>		<u>User Attributes</u>
3227		LOCATION FUNCTION CODE QUALIFIER	M	1 an..3	M
		Code identifying the function of a location.			
		9 Place of loading			
		11 Place of discharge			
		175 Activity location			
		<i>Only for compatibility with SMDG proposal. It will not be processed by JUL system.</i>			
C517		LOCATION IDENTIFICATION	C	1	R
		Identification of a location by code or name.			
	3225	Location identifier	C	an..35	R
		To identify a location.			
		UN/Locode.			
	1131	Code list identification code	C	an..17	O
		Code identifying a user or association maintained code list.			
		139 Port			
	3055	Code list responsible agency code	C	an..3	O
		Code specifying the agency responsible for a code list.			
		6 UN/ECE (United Nations - Economic Commission for Europe)			
	3224	Location name	C	an..256	O
		Name of the location.			
		<i>Only for compatibility with SMDG proposal. It will not be processed by JUL system.</i>			
C519		RELATED LOCATION ONE IDENTIFICATION	C	1	O
		Identification the first related location by code or name.			
		Usage complemented in local document.			

	3223	First related location identifier	C	an..35	O
		To identify a first related location.			
		Usage complemented in local document.			
		Use the codes for terminals/berths located in the port specified in DE:3225.			
	1131	Code list identification code	C	an..17	O
		Code identifying a user or association maintained code list.			
		Usage complemented in local document.			
	3055	Code list responsible agency code	C	an..3	O
		Code specifying the agency responsible for a code list.			
		Usage complemented in local document.			
		<i>ZZZ</i> Mutually defined			
	3222	First related location name	C	an..70	O
		Name of first related location.			
		<i>Only for compatibility with SMDG proposal. It will not be processed by JUL system.</i>			
C553		RELATED LOCATION TWO IDENTIFICATION	C	1	O
		Identification of second related location by code or name.			
		<i>Only for compatibility with SMDG proposal. It will not be processed by JUL system.</i>			
	3233	Second related location identifier	C	an..35	O
		To identify a second related location.			
	1131	Code list identification code	C	an..17	O
		Code identifying a user or association maintained code list.			
	3055	Code list responsible agency code	C	an..3	O
		Code specifying the agency responsible for a code list.			
	3232	Second related location name	C	an..70	O
		Name of the second related location.			
5479		RELATION CODE	C	1 an..3	X

Segment: **DTM** Date/Time/Period
Position: 00140
Group: Segment Group 3 (Place/Location Identification) Conditional (Optional)
Level: 3
Usage: Conditional (Optional)
Max Use: 4
Purpose: A segment to specify the date(s) and time(s) related to a location.

Dependency Notes:**Semantic Notes:****Comments:**

Notes: Usage complemented in local document if mentioned in that document.

Example: Vessel estimated date/time of arrival was 2018/10/31 14:35

DTM+132:201810311435:203'

Data Element Summary

<u>Data Element</u>	<u>Component Element</u>	<u>Name</u>	<u>Base Attributes</u>		<u>User Attributes</u>
C507		DATE/TIME/PERIOD	M	1	M
		Date and/or time, or period relevant to the specified date/time/period type.			
	2005	Date or time or period function code qualifier	M	an..3	M
		Code qualifying the function of a date, time or period.			
		132 Transport means arrival date time, estimated			
		133 Transport means departure date/time, estimated			
		178 Transport means arrival date time, actual			
		<i>Only for compatibility with SMDG proposal. It will not be processed by JUL system.</i>			
		186 Transport means departure date/time, actual			
		<i>Only for compatibility with SMDG proposal. It will not be processed by JUL system.</i>			
	2380	Date or time or period text	C	an..35	R
		The value of a date, a date and time, a time or of a period in a specified representation.			
	2379	Date or time or period format code	C	an..3	R
		Code specifying the representation of a date, time or period.			
		203 CCYYMMDDHHMM			

Group: **NAD** Segment Group 4: Name and Address
Position: 00150
Group:
Level: 1
Usage: Mandatory
Max Use: 7
Purpose: A group of segments to identify a party and related contacts.
Notes: Usage complemented in local document if mentioned in that document.

This group is used to identify the entities related with the whole document. However, some of them may be stated at detail level (SG6). This will be signaled when needed.

It will be possible that the entity that sends the message, might not be the same that operates the terminal. It is advised this group to be sent twice, at least, in order to specify the message sender and the terminal operator.

Segment Group 5 given information related with the Contact Information is to be used only when NAD:3035 is 'TR'.

Segment Summary

	Pos.	Seg.		Req.	Max.	Group:
	<u>No.</u>	<u>ID</u>	<u>Name</u>	<u>Des.</u>	<u>Use</u>	<u>Repeat</u>
M	00160	NAD	Name and Address	M	1	
	00170		Segment Group 5: Contact Information	C		1

Segment: **NAD** Name and Address
Position: 00160 (Trigger Segment)
Group: Segment Group 4 (Name and Address) Mandatory
Level: 1
Usage: Mandatory
Max Use: 1
Purpose: A segment to identify the party's name, address, and function, and other addresses, such as: - message recipient - message sender - ordering customer - ordering customer agent

Dependency Notes:**Semantic Notes:****Comments:**

Notes: Usage complemented in local document if mentioned in that document.

Whenever possible the entities are to be identified by their EORI. In Portugal the EORI id is composed by PT+[VAT number].

Example: Terminal operator identified by PT541495122.

NAD+TR+PT541495122'

Data Element Summary

<u>Data Element</u>	<u>Component Element</u>	<u>Name</u>	<u>Base Attributes</u>	<u>User Attributes</u>
3035		PARTY FUNCTION CODE QUALIFIER	M 1 an..3	M
		Code giving specific meaning to a party.		
		Usage complemented in local document if mentioned in that document.		
	AG	Agent If present in SG6, then it is not needed here.		
	CA	Carrier If present in SG6, then it is not needed here.		
	CF	Container operator/lessee If present in SG6, then it is not needed here.		
	HR	Shipping line service Only for compatibility with SMDG proposal. It will not be processed by JUL system.		
	MR	Message recipient		
	MS	Document/message issuer/sender		
	TR	Terminal operator		
C082		PARTY IDENTIFICATION DETAILS	C 1	R
		Identification of a transaction party by code.		
		Usage complemented in local document if mentioned in that document.		
	3039	Party identifier	M an..35	M

Code specifying the identity of a party.

Number corresponding to EORI of the entity, or another code mutually agreed between the parties.

When DE:3035 = "MS" the value will be used in "Message Sender".

When DE:3035 = "TR" the value will be used in "Warehouse Keeper".

1131	Code list identification code	C	an..17	O
	Code identifying a user or association maintained code list.			
	160	Party identification		
	172	Carriers		
3055	Code list responsible agency code	C	an..3	O
	Code specifying the agency responsible for a code list.			
	Usage complemented in local document if mentioned in that document.			
	20	BIC (Bureau International des Containeurs)		
		Only for backward compability.		
	ZZZ	Mutually defined		
		Only for backward compability.		
C058	NAME AND ADDRESS	C	1	O
	Unstructured name and address: one to five lines.			
	<i>Only for compatibility with SMDG proposal. It will not be processed by JUL system.</i>			
3124	Name and address description	M	an..35	M
	Free form description of a name and address line.			
3124	Name and address description	C	an..35	O
	Free form description of a name and address line.			
3124	Name and address description	C	an..35	O
	Free form description of a name and address line.			
3124	Name and address description	C	an..35	O
	Free form description of a name and address line.			
3124	Name and address description	C	an..35	O
	Free form description of a name and address line.			
C080	PARTY NAME	C	1	X
	Identification of a transaction party by name, one to five lines. Party name may be formatted.			
3036	Party name	M	an..70	X
	Name of a party.			
3036	Party name	C	an..70	X
	Name of a party.			
3036	Party name	C	an..70	X
	Name of a party.			

	3036	Party name	C	an..70	X
		Name of a party.			
	3036	Party name	C	an..70	X
		Name of a party.			
	3045	Party name format code	C	an..3	X
		Code specifying the representation of a party name.			
C059		STREET	C	1	X
		Street address and/or PO Box number in a structured address: one to four lines.			
	3042	Street and number or post office box identifier	M	an..35	X
		To identify a street and number and/or Post Office box number.			
	3042	Street and number or post office box identifier	C	an..35	X
		To identify a street and number and/or Post Office box number.			
	3042	Street and number or post office box identifier	C	an..35	X
		To identify a street and number and/or Post Office box number.			
	3042	Street and number or post office box identifier	C	an..35	X
		To identify a street and number and/or Post Office box number.			
3164		CITY NAME	C	1 an..35	X
C819		COUNTRY SUBDIVISION DETAILS	C	1	X
		To specify a country subdivision, such as state, canton, county, prefecture.			
	3229	Country subdivision identifier	C	an..9	X
		To identify a country subdivision, such as state, canton, county, prefecture.			
	1131	Code list identification code	C	an..17	X
		Code identifying a user or association maintained code list.			
	3055	Code list responsible agency code	C	an..3	X
		Code specifying the agency responsible for a code list.			
	3228	Country subdivision name	C	an..70	X
		Name of a country subdivision, such as state, canton, county, prefecture.			
3251		POSTAL IDENTIFICATION CODE	C	1 an..17	X
3207		COUNTRY IDENTIFIER	C	1 an..3	X

Group: **CTA** Segment Group 5: Contact Information
Position: 00170
Group: Segment Group 4 (Name and Address) Mandatory
Level: 2
Usage: Conditional (Optional)
Max Use: 1
Purpose: A group of segments to identify a contact and its communications related to the party.
Notes: Usage complemented in local document if mentioned in that document.

Display the person(s) or the specific department to be contacted for any matter related with this message, and the channel by which can be reached.

Segment Summary

	Pos.	Seg.		Req.	Max.	Group:
	<u>No.</u>	<u>ID</u>	<u>Name</u>	<u>Des.</u>	<u>Use</u>	<u>Repeat</u>
M	00180	CTA	Contact Information	M	1	
R	00190	COM	Communication Contact	C	4	

Segment: **CTA Contact Information**
Position: 00180 (Trigger Segment)
Group: Segment Group 5 (Contact Information) Conditional (Optional)
Level: 2
Usage: Mandatory
Max Use: 1
Purpose: A segment to identify a person or department of a message sender and/or message recipient, such as: - information contact

Dependency Notes:**Semantic Notes:****Comments:**

Notes: Example: Contact Mr. Rui Silva.

CTA+IC+:RUI SILVA'

Data Element Summary

<u>Data Element</u>	<u>Component Element</u>	<u>Name</u>	<u>Base Attributes</u>	<u>User Attributes</u>
3139		CONTACT FUNCTION CODE Code specifying the function of a contact (e.g. department or person). IC Information contact	C 1 an..3	R
C056		CONTACT DETAILS Code and/or name of a contact such as a department or employee. Code preferred.	C 1	R
	3413	Contact identifier	C an..17	X
	3412	Contact name Name of a contact, such as a department or employee.	C an..256	R

Segment: **COM** **Communication Contact**
Position: 00190
Group: Segment Group 5 (Contact Information) Conditional (Optional)
Level: 3
Usage: Conditional (Required)
Max Use: 4
Purpose: A segment to identify a communication number of a person or department to whom communication should be directed.

Dependency Notes:**Semantic Notes:****Comments:**

Notes: Example: Contact by phone number 229390700.

COM+229390700:TE'

Example: Contact by email jose.silva@mybusiness.com

COM+JOSE.SILVA AT MYBUSINESS.COM:EM'

Data Element Summary

<u>Data Element</u>	<u>Component Element</u>	<u>Name</u>	<u>Base Attributes</u>		<u>User Attributes</u>
C076		COMMUNICATION CONTACT	M	1	M
		Communication number of a department or employee in a specified channel.			
	3148	Communication address identifier	M	an..512	M
		To identify a communication address.			
	3155	Communication means type code	M	an..3	M
		Code specifying the type of communication address.			
		AL Cellular phone			
		EM Electronic mail			
		FX Telefax			
		TE Telephone			
		TL Telex			
		Only for compatibility with SMDG proposal. It will not be processed by JUL system.			
		XF X.400 address			
		Only for compatibility with SMDG proposal. It will not be processed by JUL system.			

Group:	EQD Segment Group 6: Equipment Details
Position:	00200
Group:	
Level:	1
Usage:	Conditional (Optional)
Max Use:	9999
Purpose:	<p>A group of segments to specify containers either loaded or discharged; in the latter case - only in case of shortlanded - the group of segments is to specify containers that had to be discharged (according to the discharge order message).</p> <p>In a normal discharge report and load report message the container details are only required if they differ from the details given in the respective order message. In case of overlanded containers this group will contain the full container details giving as much information as possible. In case of shortlanded containers this group will only contain the container prefix and number.</p>
Notes:	<p>At least one occurrence of this group has to occur if BGM:1225 is not '55'.</p> <p>If the group is to report movements of transport equipment, then the equipment must be identified and its tare must be provided. If it is full then information about the seal must be provided. Also in element EQD:8155 and if the equipment is a container, its ISO type according to ISO 6346 (2nd and 3rd editions) is sent. In this standard the first number of this codification provides the container length. If unknown then use the code defined for element EQD:8155 by UN/EDIFACT.</p> <p>The group is also to report movements of general cargo (EQD:8053 = 'BB').</p> <p>In this case the group should contain information on a general cargo shipment of goods (shipment hereafter to simplify). This shipment can be identified by the transport document id only (in segment RFF), or complemented by a reference number provided by the terminal operator (also in segment RFF having RFF:1153 = 'UCN').</p> <p>Complementary to the weight (in segment MEA), information on the number of volumes should be provided (in segment FTX with FTX:4451 = 'PAC'), considering that bulk cargo count as 1 volume.</p> <p>Additionaly data on Marks & Numbers must be provided. However, it is possible that in a single shipment, several Marks & Numbers may exist. Due to COARRI message structure definition, considering the possible number of different Marks & Numbers, the following usage was defined.</p> <p>Assuming a scenario where there are 2 shipments , but belonging to the same Bill of Lading, with id OPT51228, discharged from the means of transport (import). One shipment with total weight 350 Kg, identified by 00001 (id provided by the terminal operator), has 2 volumes. One volume is marked with VOL32, the other volume is marked with VOL47. The other shipment, with total weight of 410 Kg, identified by 00002 (id provided by the terminal operator), has 3 volumes: DD78, FF36 and LL14.</p> <p>The issue here is that the weight of each volume may not be available.</p>

This COARRI MIG usage for this scenario will be the following. Send one occurrence of SG6 for each Marks & Numbers in stake. In each occurrence, use segment RFF to identify the Bill of Lading (or other transport document), the complementary reference provided by the terminal operator and the Marks & Numbers. Also, in the occurrence of segment MEA, the weight of the whole shipment should be present, and in segment FTX (with FTX:4451 = 'PAC') the number of volumes of the whole shipment.

For the described scenario, the segment sequence would be something like:

```

...
EQD+BB++++3+6'
RFF+BM:OPT51228'
RFF+UCN:00001'
RFF+ACH:VOL32'
...
MEA+AAE+AAB+KGM:350'
...
FTX+PAC+++2:...'
...
EQD+BB++++3+6'
RFF+BM:OPT51228'
RFF+UCN:00001'
RFF+ACH:VOL47'
...
MEA+AAE+AAB+KGM:350'
...
FTX+PAC+++2:...'
...
EQD+BB++++3+6'
RFF+BM:OPT51228'
RFF+UCN:00002'
RFF+ACH:DD78'
...
MEA+AAE+AAB+KGM:410'
...
FTX+PAC+++3:...'
...
EQD+BB++++3+6'
RFF+BM:OPT51228'
RFF+UCN:00002'
RFF+ACH:FF36'
...
MEA+AAE+AAB+KGM:410'
...
FTX+PAC+++3:...'
...
EQD+BB++++3+6'
RFF+BM:OPT51228'
RFF+UCN:00002'

```

RFF+ACH:LL14'
 ...
 MEA+AAE+AAB+KGM:410'
 ...
 FTX+PAC+++3:...'

 ...

This structure usage allows the receiver to reproduce the set of Marks & Numbers of a particular shipment, even if it identified only by Bill of Lading (or other transport document).

If there are no marks associated with the shipment, then report "No Marks".

Segment Summary

	Pos.	Seg.		Req.	Max.	Group:
	No.	ID	Name	Des.	Use	Repeat
M	00210	EQD	Equipment Details	M	1	
O	00220	RFF	Reference	C	5	
D	00230	GDS	Nature of Cargo	C	1	
O	00240	TMD	Transport Movement Details	C	9	
R	00250	DTM	Date/Time/Period	C	2	
	00260		Segment Group 7: Place/Location Identification	C		7
R	00290	MEA	Measurements	C	3	
O	00300	DIM	Dimensions	C	5	
	00310		Segment Group 8: Temperature	C		1
D	00340	SEL	Seal Number	C	7	
O	00350	FTX	Free Text	C	8	
	00370		Segment Group 9: Dangerous Goods	C		99
O	00440	EQA	Attached Equipment	C	9	
O	00470	HAN	Handling Instructions	C	3	
	00480		Segment Group 11: Damage	C		9
	00510		Segment Group 12: Transport Information	C		2
O	00570	NAD	Name and Address	C	3	

Segment: **EQD** **Equipment Details**
Position: 00210 (Trigger Segment)
Group: Segment Group 6 (Equipment Details) Conditional (Optional)
Level: 1
Usage: Mandatory
Max Use: 1
Purpose: A segment identifying a container, container size/type. The equipment status may be e.g. overlanded, shortlanded, import, export.

Dependency Notes:**Semantic Notes:****Comments:**

Notes: This segment is to identify the transport equipment, its size/type, its status and if it is full or empty.

It is also used to indicate that the following segments in the group occurrence are related with general cargo (DE:8053 = 'BB').

If the transport equipment is other than an ISO container then DE:8155 shall have the proper value from the EDIFACT code list associated with this element.

If the transport equipment is an ISO container then DE:8155 shall have the ISO type according standard ISO 6346. If this code is unknown then place the proper value from EDIFACT code list associated with this element.

Example: Container CGTU 200311/5, 20 ft, export/load, full.

EQD+CN+CGTU2003115+21:102:6++2+5'

Example: Container GSTU 000029/0, 40 ft General purpose (ISO 40GP), transhipped, empty

EQD+CN+GSTU0000290+40GP:102:5++6+4'

Example: Trailer Z-53791, import/unload, full

EQD+TE+Z53791+14:102:6++3+5'

Example: group related with general cargo being imported

EQD+BB++++3+6'

Data Element Summary

Data Element	Component Element	Name	Base Attributes			User Attributes
8053		EQUIPMENT TYPE CODE QUALIFIER	M	1	an..3	M
		Code qualifying a type of equipment.				
		BB				
		Un-containerized cargo (breakbulk)				
		This code is to be used when reporting general cargo shipment				

					movement.
	BPP	Truck and trailer combination being transported			It will be processed like 'TE'.
					Only for compatibility with SMDG proposal.
	CH	Chassis			It will be treated like 'TE'.
					Only for compatibility with SMDG proposal.
	CN	Container			
	PA	Pallet			
	PL	Platform			
	RG	Reefer generator			Only for compatibility with SMDG proposal.
	SW	Swap body			It will be treated like 'CN'.
					Only for compatibility with SMDG proposal.
	TE	Trailer			
C237	EQUIPMENT IDENTIFICATION		C	1	D
	Marks (letters/numbers) identifying equipment.				
					This element is not to be used when reporting general cargo (DE:8053 = 'BB').
	8260	Equipment identifier	C	an..17	R
		To identify equipment.			
					<i>The value will be used in "Identification" element in message SeaWarehouseKeeperContainerReport.</i>
	1131	Code list identification code	C	an..17	X
	3055	Code list responsible agency code	C	an..3	X
	3207	Country identifier	C	an..3	X
C224	EQUIPMENT SIZE AND TYPE		C	1	D
	Code and or name identifying size and type of equipment. Code preferred.				
					This element is not to be used when reporting general cargo (DE:8053 = 'BB').
	8155	Equipment size and type description code	C	an..10	R
	Code specifying the size and type of equipment.				
					In case of ISO container equipment (DE:8053 = 'CN') and if its ISO type is known then send the Size/Type information according to ISO 6346 (2nd, 3rd edition and amendments).
					Otherwise use UN/EDIFACT code list for Data Element 8155.
					<i>The value will be used in "Type" element in the SeaWarehouseKeeperContainerReport.</i>
					<i>If EQD:8053 = 'CN' or treated like 'CN', then the value is the the concatenation of</i>

'CN' with ISO type present in DE:8155.

If EQD:8053 = 'TE' or treated like 'TE', then the value is 'OUTE'.

Otherwise the element should have 'OUBPP'.

Refer to D.16A Data Element Dictionary for acceptable code values.

1131	Code list identification code	C	an..17	O
	Code identifying a user or association maintained code list.			
	102		Size and type	
3055	Code list responsible agency code	C	an..3	O
	Code specifying the agency responsible for a code list.			
	5		ISO (International Organization for Standardization)	
	6		UN/ECE (United Nations - Economic Commission for Europe)	
8154	Equipment size and type description	C	an..35	O
	Free form description of the size and type of equipment.			
	Only for compatibility with SMDG proposal. It will not be processed by JUL system.			
8077	EQUIPMENT SUPPLIER CODE	C	1 an..3	O
	Code specifying the party that is the supplier of the equipment.			
	Only for compatibility with SMDG proposal. It will not be processed by JUL system.			
8249	EQUIPMENT STATUS CODE	C	1 an..3	R
	Code specifying the status of equipment.			

The value will be used in "Transshipment" element.

If DE:8249 = '6' then the value is "Yes". Otherwise is "No".

1	Continental
	Only for compatibility with SMDG proposal. It will not be processed by JUL system.
2	Export
3	Import
5	Shifter
6	Transshipment
7	Shortlanded

*If the transport equipment or general cargo shipment has not been previously reported from a provisional perspective in a SeaWarehouseKeeper*Report, then shortlanded equipment or shipment will not be reported to Customs in the context of Warehouse Depositor.*

However, if it has been reported from a provisional perspective

*in a SeaWarehouseKeeper*Report, then it should be removed from that report.*

8	Overlanded
	It will be treated like '3'. Only for compatibility with SMDG proposal.
14	Reloader
	Usage complemented in local document if mentioned in that document. It will be treated like '2' if BGM:1225 = '122'. It will be treated like '3' if BGM:1225 = '119'. Only for compatibility with SMDG proposal.

8169 FULL OR EMPTY INDICATOR CODE C 1 an..3 R
Code indicating whether an object is full or empty.

The value will be used to infer the value in "Empty Full" element in SeaWarehouseKeeperContainerReport, except when the value is '6'.

4	Empty
	<i>Use "Empty".</i>
5	Full
	<i>Use "Full".</i>
6	No volume available
	To be used in case of general cargo (EQD:8053 = 'BB').

4233 MARKING INSTRUCTIONS CODE C 1 an..3 X

Segment: **RFF** Reference
Position: 00220
Group: Segment Group 6 (Equipment Details) Conditional (Optional)
Level: 2
Usage: Conditional (Optional)
Max Use: 5
Purpose: A segment identifying a relevant reference number, such as: - container sequence number - booking reference number

Dependency Notes:**Semantic Notes:****Comments:**

Notes: Usage complemented in local document if mentioned in that document.

If DE:1153 = 'BM' then the segment is referring the Bill of Lading identification (id). Although not the only transport document used in the business it is the most common. This is particular important when the group is referring to general cargo shipment since the transport document id is needed to identify the shipment. For this reason one occurrence of this segment with DE:1153 = 'BM' is required when EQD:8053 = 'BB'.

If DE:1153 = 'UCN' then the segment is referring a unique identification provided by the terminal operator in the context of general cargo movement (EQD:8053 = 'BB'). This number provides complementary data to identify the shipment, together with the transport document identification, given in another occurrence of this segment.

If DE:1153 = 'ACH' then the segment is referring the Marks & Numbers of a shipment. It must be send if EQD:8053 = 'BB'.

If DE:1153 = 'BN' then the segment is referring to a shipping line/agent booking number/id. Optional.

If DE:1153 = 'ADO' then the segment is referiing the loading/discharge order sent from the shipping company to terminal operator.

This reference refers to documents and not to messages.

Example: Booking number NB/0123/03.

RFF+BN:NB/0123/03'

Example: Entrance document 2000/7256.

RFF+ER:2000/7256'

The codes signaled in DE:1153 will be used to infer the value to put in element "Type" in element "CustomsDocument".

Data Element Summary

<u>Data Element</u>	<u>Component Element</u>	<u>Name</u>	<u>Base Attributes</u>		<u>User Attributes</u>
C506		REFERENCE	M	1	M
		Identification of a reference.			
	1153	Reference code qualifier	M	an..3	M
		Code qualifying a reference.			
		AAE			
		Goods declaration number			
		Only for compatibility with SMDG proposal. It will not be processed by JUL system.			
		AAO			
		Consignment identifier, consignee assigned			
		Only for compatibility with SMDG proposal. It will not be processed by JUL system.			
		AA Y			
		Carrier's agent reference number			
		Only for compatibility with SMDG proposal. It will not be processed by JUL system.			
		ABT			
		Goods declaration document identifier, Customs			
		Only for compatibility with SMDG proposal. It will not be processed by JUL system.			
		ABZ			
		Vehicle licence number			
		Only for compatibility with SMDG proposal. It will not be processed by JUL system.			
		ACD			
		Additional reference number			
		Only for compatibility with SMDG proposal. It will not be processed by JUL system.			
		ACH			
		Packaging unit identification			
		Use this qualifier when the value provides the Marks & Numbers in a general cargo shipment situation (EQD:8053 = 'BB', see SG6 (EQD) notes).			
		<i>The several values that may appear due to several occurrences of SG6(EQD), see notes on the usage of SG6, related with the same general cargo shipment, will be concatenated and placed in element 'Marks And Numbers' in message SeaWarehouseKeeperCargoReport.</i>			
		ADO			
		Container work order reference number			
		AEW			
		Empty container bill number			
		Document of Transport. Only applied for empty containers being repositioned.			
		AHI			
		Transport contract reference number			
		Only for compatibility with SMDG proposal. It will not be processed by JUL system.			
		AKB			
		Container prefix			
		Only for compatibility with SMDG proposal. It will not be processed by JUL system.			
		AKG			
		Vehicle Identification Number (VIN)			

	Only for compatibility with SMDG proposal. It will not be processed by JUL system.
AKW	Transport costs reference number Only for compatibility with SMDG proposal. It will not be processed by JUL system.
ARJ	Personal identity card number Only for compatibility with SMDG proposal. It will not be processed by JUL system.
ATW	Flat rack container bundle identification number Only for compatibility with SMDG proposal. It will not be processed by JUL system.
AUA	Place of positioning reference Only for compatibility with SMDG proposal. It will not be processed by JUL system.
BM	Bill of lading number Required if EQD:8053 = 'BB'
	<i>Send value 'N705' in element "Type".</i>
BN	Consignment identifier, carrier assigned Also known as Booking Number.
BST	Backstow reference Temporary code. Only for compatibility with SMDG proposal. It will not be processed by JUL system.
BT	Batch number/lot number Only for compatibility with SMDG proposal. It will not be processed by JUL system.
CN	Carrier's reference number Only for compatibility with SMDG proposal. It will not be processed by JUL system.
CT	Contract number Only for compatibility with SMDG proposal. It will not be processed by JUL system.
CU	Consignment identifier, consignor assigned Only for compatibility with SMDG proposal. It will not be processed by JUL system.
CV	Container operators reference number
DR	Dock receipt number Only for compatibility with SMDG proposal. It will not be processed by JUL system.
DSO	Discharge order number Usage complemented in local document if mentioned in that document.
EQ	Equipment number Only for compatibility with SMDG proposal. It will not be processed by JUL system.

	ER	Container/equipment receipt number			
	MKS	Marks and numbers Only for compatibility with SMDG proposal. It will be treated like 'ACH'.			
	RE	Release number Only for compatibility with SMDG proposal. It will not be processed by JUL system.			
	SQ	Equipment sequence number Only for compatibility with SMDG proposal. It will not be processed by JUL system.			
	TF	Transfer number Only for compatibility with SMDG proposal. It will not be processed by JUL system.			
	UCN	Unique consignment reference number Advised if EQD:8053 = 'BB'.			
	VGR	Transport equipment gross mass verification reference number Only for compatibility with SMDG proposal. It will not be processed by JUL system.			
	VN	Order number (vendor) Only for compatibility with SMDG proposal. It will not be processed by JUL system.			
	VT	Motor vehicle identification number Only for compatibility with SMDG proposal. It will not be processed by JUL system.			
1154	Reference identifier		C	an..70	R
	Identifies a reference.				
	<i>The value will be used in "Booking Number" element when DE:1153 = 'BN'.</i>				
	<i>The value will be used in "Unique Number" element in message SeaWarehouseKeeperCargoReport when DE:1153 = 'UCN'.</i>				
	<i>The value will be used in "Marks And Numbers" element in message SeaWarehouseKeeperCargoReport when DE:1153 = 'ACH'.</i>				
	<i>If the value in DE:1153 is signaled to be used in element "Type", then the value in this element is to be used in "Number".</i>				
1156	Document line identifier		C	an..6	X
1056	Version identifier		C	an..9	X
1060	Revision identifier		C	an..6	X

Segment: **GDS** Nature of Cargo
Position: 00230
Group: Segment Group 6 (Equipment Details) Conditional (Optional)
Level: 2
Usage: Conditional (Dependent)
Max Use: 1
Purpose: A segment to show the broad classification of the goods within a container for operational and general information purposes.

Dependency Notes:**Semantic Notes:****Comments:**

Notes: Required if EQD:8053 = 'BB'. Not needed otherwise.

Example: Solid bulk, agricultural products

GDS+23::2'

Data Element Summary

<u>Data Element</u>	<u>Component Element</u>	<u>Name</u>	<u>Base Attributes</u>		<u>User Attributes</u>
C703		NATURE OF CARGO Rough classification of a type of cargo.	C	1	O
	7085	Cargo type classification code Code specifying the classification of a type of cargo. Annex II - Eurostat Maritime Transport Directive.	M	an..3	M
		<i>The code value, added with a 0 (zero) on the left side if total size is less than 3 characters, will be used in element "Cargo Type" in message SeaWarehouseKeeperCargoReport.</i>			
	1131	Code list identification code	C	an..17	X
	3055	Code list responsible agency code Code specifying the agency responsible for a code list. 2 CEC (Commission of the European Communities)	C	an..3	O
C288		PRODUCT GROUP To give product group information.	C	1	X
	5389	Product group name code Code specifying the name of a product group.	C	an..25	X
	1131	Code list identification code Code identifying a user or association maintained code list.	C	an..17	X
	3055	Code list responsible agency code Code specifying the agency responsible for a code list.	C	an..3	X
	5388	Product group name	C	an..35	X

Name of a product code.

Segment: **TMD** **Transport Movement Details**
Position: 00240
Group: Segment Group 6 (Equipment Details) Conditional (Optional)
Level: 2
Usage: Conditional (Optional)
Max Use: 9
Purpose: A segment to indicate a Full Container Load (FCL) or a Less than Full Container Load (LCL).

Dependency Notes:**Semantic Notes:****Comments:**

Notes: Only for compatibility with SMDG proposal. It will not be processed by JUL system.

Data Element Summary

Data Element	Component Element	Name	Base Attributes		User Attributes
C219		MOVEMENT TYPE Description of type of service for movement of cargo.	C	1	O
	8335	Movement type description code Code specifying a type of movement. Refer to D.16A Data Element Dictionary for acceptable code values.	C	an..3	O
	8334	Movement type description Free form description of a type of movement.	C	an..35	O
8332		EQUIPMENT PLAN DESCRIPTION Free form description of the equipment plan.	C	1 an..26	O
8341		HAULAGE ARRANGEMENTS CODE Code specifying the arrangement for the haulage of goods. Refer to D.16A Data Element Dictionary for acceptable code values.	C	1 an..3	O

Segment: **DTM** **Date/Time/Period**
Position: 00250
Group: Segment Group 6 (Equipment Details) Conditional (Optional)
Level: 2
Usage: Conditional (Required)
Max Use: 2
Purpose: A segment to identify a date and time related to the equipment, such as: - Date and/or time of actual loading or discharge - CSC expiration date (International Convention for Safe Containers)

Dependency Notes:**Semantic Notes:****Comments:****Notes:**

This segment is to provide time of the equipment's movement from/to the vessel. Depending of the report type, an occurrence of this segment with DE:2005 in {'403', '404'} is required.

Additionally if the Verified Gross Mass measurement was taken, then this segment id to provide the date/time of this action. In the casd DE:2005 = '798'.

In case of general cargo shipments (EQD:8053 = 'BB') or in the absence of exact information, the Terminal Operator will send the Date and Time information corresponding to a batch of equipment. For instance, if the discharge operations is made in two phases, part of the equipment will have a date/time value related to one phase, others will have the date/time value related to other phase.

Example: Discharge date/time on 2002/02/01 at 14:21.

DTM+403:200202011421:203'

Data Element Summary

<u>Data Element</u>	<u>Component Element</u>	<u>Name</u>	<u>Base Attributes</u>		<u>User Attributes</u>
C507		DATE/TIME/PERIOD	M	1	M
		Date and/or time, or period relevant to the specified date/time/period type.			
	2005	Date or time or period function code qualifier	M	an..3	M
		Code qualifying the function of a date, time or period.			
		7			Effective from date/time It will be trethead like '403' if BGM:1001 = '119'. It will be treated like '404' if BGM:1001 = '122'.
		181			Positioning date/time of equipment Only for compatibility with SMDG proposal. It will not be processed by JUL system.
		203			Execution date/time, requested Only for backward compability.

It will be treated like '403' if BGM:1001 = '119'.

It will be treated like '404' if BGM:1001 = '122'.

394 Equipment positioning date/time, actual
Only for compatibility with SMDG proposal. It will not be processed by JUL system.

403 Discharge date/time, actual

404 Transport means loading date/time, actual

798 Verified gross mass determination date/time

2380 Date or time or period text C an..35 R

The value of a date, a date and time, a time or of a period in a specified representation.

The value will be used in "Movement Date" element if DE:2005 in {'403','404'}.

2379 Date or time or period format code C an..3 R

Code specifying the representation of a date, time or period.

203 CCYYMMDDHHMM

Group:	LOC Segment Group 7: Place/Location Identification
Position:	00260
Group:	Segment Group 6 (Equipment Details) Conditional (Optional)
Level:	2
Usage:	Conditional (Optional)
Max Use:	7
Purpose:	A group of segments to identify a location or country related to the equipment.
Notes:	<p>This segment group is to provide the ports that are in the route of the transport equipment or the general cargo shipment (shipment to simplify), shipment's locations while in the port or on board, and the Temporary Storage Warehouse Identification where the transport equipment or shipments will be located.</p> <p>The ports to be reported depend of the transport equipment or shipment status stated in element 8249 of segment EQD.</p> <p>The ports of loading (DE:3227 = '9'), in case of a discharge report, and discharge (DE:3227 = '11'), in case of loading report, must always be reported. The berth (DE:3227 = '164') where the discharge/loading operation took place should be reported but it is not compulsory.</p> <p>If the transport equipment or shipment is being discharged then the port of loading is the port in which the goods were moved into the vessel.</p> <p>If the transport equipment or shipment is being loaded then the port of discharge is the port in which the goods will be moved out of the vessel.</p> <p>If the transport equipment or shipment are being transhipped then the port of loading is the port in which the transport equipment or shipment were moved into the vessel and the port of discharge is the port in which the transport equipment or shipment will be moved out of the vessel. But due to the availability of information, it is admissible that the port of discharge is reported as being the current port, provided that the information is updated later (by sending a change message, or be reporting the correct port in the loading report).</p> <p>The place of receipt (DE:3227 = '88') is the point where the carrier started the movement of transport equipment or shipment. When known this information must be provided if the transport equipment or shipment have an import or a transhipment movement.</p> <p>The place of delivery (DE:3227 = '7') is the point where the carrier will cease the movement of the transport equipment or shipment, When known this information must be provided if the transport equipment or shipment have an export or a transhipment movement.</p> <p>In case of transport equipment, when the document is a Discharge Report and the equipment is not going to leave the port area immediately (see HAN notes) then the equipment's location in the terminal or other location inside the port but outside the container terminal must be reported. In this case LOC:3227 = '150'. The position is specified at C519.</p>

Segment Summary

	Pos.	Seg.		Req.	Max.	Group:
	<u>No.</u>	<u>ID</u>	<u>Name</u>	<u>Des.</u>	<u>Use</u>	<u>Repeat</u>
M	00270	LOC	Place/Location Identification	M	1	

Segment: **LOC** **Place/Location Identification**
Position: 00270 (Trigger Segment)
Group: Segment Group 7 (Place/Location Identification) Conditional (Optional)
Level: 2
Usage: Mandatory
Max Use: 1
Purpose: A segment to identify a location or country related to the equipment, such as: -
 stowage cell - (final) place/port of discharge - transhipment place - place of
 delivery - country of origin/destination

Dependency Notes:**Semantic Notes:****Comments:****Notes:**

Example: Port of loading Rotterdam

LOC+9+NLRM:139:6'

Example: Place of receipt New York

LOC+88+USNYC:139:6'

Example: In the terminal the equipment will be placed at position terminal TCN, park
 01, row/line 035-036, high 1, in Port of Leixões

LOC+150+PTLEI:139:6+TCNP01035036W1'

Example: The temporary storage warehouse location identifier is
 DTP00000051258PT

LOC+281++DTP00000051258PT'

Data Element Summary

<u>Data Element</u>	<u>Component Element</u>	<u>Name</u>	<u>Base Attributes</u>	<u>User Attributes</u>
3227		LOCATION FUNCTION CODE QUALIFIER	M 1 an..3	M
		Code identifying the function of a location.		
	5	Place of departure		
		<i>Only for compatibility with SMDG proposal. It will not be processed by JUL system.</i>		
	7	Place of delivery		
	9	Place of loading		
		<i>Required in case of discharge report (BGM:1001:='119').</i>		
	11	Place of discharge		
		<i>Required in case of loading report (BGM:1001:='122').</i>		

In case an occurrence of SG7(LOC) with this code qualifier, then the value in DE:3225 will be used in element "Destination Port".

13	Place of transhipment Only for compatibility with SMDG proposal. It will not be processed by JUL system.
15	Place of transfer responsibility Only for compatibility with SMDG proposal. It will not be processed by JUL system.
33	Baseport of discharge Only for compatibility with SMDG proposal. It will not be processed by JUL system.
34	Baseport of loading Only for compatibility with SMDG proposal. It will not be processed by JUL system.
65	Final port or place of discharge Only for compatibility with SMDG proposal. It will not be processed by JUL system.
88	Place of receipt Only for compatibility with SMDG proposal. It will not be processed by JUL system.
98	Place of empty equipment despatch Only for compatibility with SMDG proposal. It will not be processed by JUL system.
147	Transport means stowage location Usage complemented in local document if mentioned in that document. Advised in loading report (BGM:1001 = '122').
150	Container stack position Usage complemented in local document if mentioned in that document. Advised in discharge report (BGM:1001 = '119').
154	Place/location of on-hire Only for compatibility with SMDG proposal. It will not be processed by JUL system.
155	Place/location of off-hire Only for compatibility with SMDG proposal. It will not be processed by JUL system.
164	Berth
170	Final port of discharge Only for compatibility with SMDG proposal. It will not be processed by JUL system.
175	Activity location Only for compatibility with SMDG proposal. It will not be processed by JUL system.
281	Bonded warehouse Use this code when identifying the Temporary Storage

		Warehouse.			
C517	LOCATION IDENTIFICATION		C	1	D
	Identification of a location by code or name.				
	Not to use where DE:3227 = '281'.				
3225	Location identifier		C	an..35	R
	To identify a location.				
	When DE:3227 <> '147' then use UN/ECE Recommendation 16 (3rd edition) - UN/LOCODE- Codes for Port and Other Locations (Doc. Ref. ECE/TRADE/227) upgraded to 2003.2 version.				
	When DE:3227 = '147' then use ISO format BBBRRTT on the identification of the stowage cell in the means of transport.				
1131	Code list identification code		C	an..17	D
	Code identifying a user or association maintained code list.				
	If DE:3227 <> '147'.				
	139	Port			
3055	Code list responsible agency code		C	an..3	O
	Code specifying the agency responsible for a code list.				
	5	ISO (International Organization for Standardization)			
	Only to be used when DE:3227 = '147'.				
	6	UN/ECE (United Nations - Economic Commission for Europe)			
	To be used when DE:3227 <> '147'.				
3224	Location name		C	an..256	O
	Name of the location.				
	Only for compatibility with SMDG proposal. It will not be processed by JUL system.				
C519	RELATED LOCATION ONE IDENTIFICATION		C	1	D
	Identification the first related location by code or name.				
	Usage complemented in local document if mentioned in that document.				
	Use only when DE:3227 in {'150', '281'}.				
3223	First related location identifier		C	an..35	R
	To identify a first related location.				
	<i>If DE:3227 = '281' the value should be placed in "Temporary Storage Warehouse Identification" element.</i>				
	<i>If DE:3227 = '150' the following applies:</i>				
	<i>- DE:3225 concatenated with TTT (terminal) will be in "Place" element</i>				
	<i>- PPP: Park (3 characters)</i>				
	<i>- FFFFFFF (Initial Row and Final Row) will be in "Park Start Row" and "Park Final Row" elements, respectively</i>				
	<i>- L (Line) will be in "Park Cell" element</i>				

- A (Height) will be in "Park Cell Height" element, in this case, only in SeaWarehouseKeeperContainerReport.

	1131	Code list identification code	C	an..17	O
		Code identifying a user or association maintained code list. Only for compatibility with SMDG proposal. It will not be processed by JUL system.			
	3055	Code list responsible agency code	C	an..3	O
		Code specifying the agency responsible for a code list. Only for compatibility with SMDG proposal. It will not be processed by JUL system. Refer to D.16A Data Element Dictionary for acceptable code values.			
	3222	First related location name	C	an..70	O
		Name of first related location. Only for compatibility with SMDG proposal. It will not be processed by JUL system.			
C553		RELATED LOCATION TWO IDENTIFICATION	C	1	O
		Identification of second related location by code or name. Only for compatibility with SMDG proposal. It will not be processed by JUL system.			
	3233	Second related location identifier	C	an..35	O
		To identify a second related location.			
	1131	Code list identification code	C	an..17	O
		Code identifying a user or association maintained code list.			
	3055	Code list responsible agency code	C	an..3	O
		Code specifying the agency responsible for a code list. Refer to D.16A Data Element Dictionary for acceptable code values.			
	3232	Second related location name	C	an..70	O
		Name of the second related location.			
5479		RELATION CODE	C	1 an..3	X

Segment: **MEA** Measurements
Position: 00290
Group: Segment Group 6 (Equipment Details) Conditional (Optional)
Level: 2
Usage: Conditional (Required)
Max Use: 3
Purpose: A segment specifying a physical measurement related to the equipment, such as: - gross weight

Dependency Notes:**Semantic Notes:****Comments:**

Notes: This segment is used to provide information about the weights related with the equipment or the general cargo shipment.

In compliance with the SOLAS Convention, if the Verified Gross Weight is known, then this must be the value to report.

If the equipment is empty, then a gross weight of zero must be declared.

Example: Equipment gross weight 31703 kilograms.

MEA+AAE+AET+KGM:31703'

Example: Equipment verified gross weight according to SOLAS Convention rules and procedures is 24023 kilograms.

MEA+AAE+VGM+KGM:24023'

Example: General cargo shipment weight 123753 kilograms.

MEA+AAE+AAB+KGM:123753'

Data Element Summary

Data Element	Component Element	Name	Base Attributes	User Attributes
6311		MEASUREMENT PURPOSE CODE QUALIFIER	1 an..3	M
		Code qualifying the purpose of the measurement.		
	AAE	Measurement		
C502		MEASUREMENT DETAILS	C 1	R
		Identification of measurement type.		
	6313	Measured attribute code	C an..3	R
		Code specifying the attribute measured.		
	AAA	Net weight		
		Only for compatibility with code 'AAL' in SMDG proposal. It will not be processed by JUL system.		
	AAB	Goods item gross weight		

					Use in case of general cargo shipment (EQD:8053 = 'BB').
	AAO	Humidity			Only for compatibility with SMDG proposal. It will not be processed by JUL system.
	AAS	Air flow			Only for compatibility with SMDG proposal. It will not be processed by JUL system.
	AAW	Gross volume			Only for compatibility with SMDG proposal. It will not be processed by JUL system.
	ABJ	Volume			Only for compatibility with SMDG proposal. It will not be processed by JUL system.
	AET	Transport equipment gross weight			
	CD	Carbondioxide			Carbondioxide setting in percentage.
					Only for compatibility with SMDG proposal. It will not be processed by JUL system.
	G	Gross weight			Usage complemented in local document if mentioned in that document.
					It will be treated like 'AET'.
	MW	Maximum weight			Only for compatibility with SMDG proposal. It will not be processed by JUL system.
	T	Tare weight			Use in case of transport equipment (EQD:8053 <> 'BB').
	VGM	Transport equipment verified gross mass (weight)			
	ZO	Oxygen			Only for compatibility with SMDG proposal. It will not be processed by JUL system.
	6321	Measurement significance code	C	an..3	X
	6155	Non-discrete measurement name code	C	an..17	X
	6154	Non-discrete measurement name	C	an..70	X
C174		VALUE/RANGE	C	1	R
		Measurement value and relevant minimum and maximum values of the measurement range.			
	6411	Measurement unit code	C	an..8	R
		Code specifying the unit of measurement.			
	FTQ	Cubic Feet			Only for compatibility with SMDG proposal. It will not be processed by JUL system.
	KGM	Kilograms			
	LBR	Pounds			

Only for compatibility with SMDG proposal. It will not be processed by JUL system.

MTQ Cubic Metres

Only for compatibility with SMDG proposal. It will not be processed by JUL system.

PCT Percentage

Only for compatibility with SMDG proposal. It will not be processed by JUL system.

6314	Measure	C	an..18	R
	To specify the value of a measurement.			
	If the value is not available, put '0'.			
	<i>The value will be used in "Gross Weight" element when DE:6313 in {'AET', 'G', 'VGM'}.</i>			
6162	Range minimum quantity	C	n..18	X
6152	Range maximum quantity	C	n..18	X
6432	Significant digits quantity	C	n..2	X
7383	SURFACE OR LAYER CODE	C	1 an..3	X

Segment: **DIM** Dimensions
Position: 00300
Group: Segment Group 6 (Equipment Details) Conditional (Optional)
Level: 2
Usage: Conditional (Optional)
Max Use: 5
Purpose: A segment specifying physical dimensions related to the equipment, such as: - gross dimensions - off standard dimension general - off standard dimension left - off standard dimension right - off standard dimension back - off standard dimension front

Dependency Notes:**Semantic Notes:****Comments:**

Notes: Example: Transport equipment has off-standard height by additional 23 cm.

DIM+13+CMT:::23'

Example: Transport equipment has extra 40 cm in length, 8 cm in width, and 9 cm in height.

DIM+9+CMT:40:8:9'

Data Element Summary

Data Element	Component Element	Name	Base Attributes			User Attributes
6145		DIMENSION TYPE CODE QUALIFIER	M	1	an..3	M
		Code qualifying the type of the dimension.				
		1 Gross dimensions				
		To be used for general cargo shipment only (EQD:8053 = 'BB').				
		5 Off-standard dimension front				
		6 Off-standard dimension back				
		7 Off-standard dimension right				
		8 Off-standard dimension left				
		9 Off-standard dimension general				
		10 External equipment dimension				
		To be used for non-ISO equipment only.				
		13 Off-standard dimensions height				
C211		DIMENSIONS	M	1		M
		Specification of the dimensions of a transportable unit.				
	6411	Measurement unit code	M		an..8	M
		Code specifying the unit of measurement.				
		CMT Centimetres				

	INH	Inches			
6168	Length measure		C	n..15	O
	To specify the value of a length dimension.				
	Overall length if DE:6145 in {'1', '10'}.				
	Overlength if DE:6145 in {'5', '6'}.				
6140	Width measure		C	n..15	O
	To specify the value of a width dimension.				
	Overall width if DE:6145 in {'1', '10'}.				
	Overwidth if DE:6145 in {'7', '8'}.				
6008	Height measure		C	n..15	O
	To specify the value of a height dimension.				
	Overall height if DE:6145 in {'1', '10'}.				
	Overheight if DE:6145 = '13'.				
6182	Diameter measure		C	n..15	X

Group: **TMP** Segment Group 8: Temperature
Position: 00310
Group: Segment Group 6 (Equipment Details) Conditional (Optional)
Level: 2
Usage: Conditional (Dependent)
Max Use: 1
Purpose: A segment group to identify transport related temperature settings.
Notes: Not used in case of general cargo shipment (EQD:8053 = 'BB').

This segment group is used to provide information on temperature that a transport equipment must be set during its movement through the port. This is a typical case with reefer containers.

Segment Summary

	Pos.	Seg.		Req.	Max.	Group:
	<u>No.</u>	<u>ID</u>	<u>Name</u>	<u>Des.</u>	<u>Use</u>	<u>Repeat</u>
M	00320	TMP	Temperature	M	1	
O	00330	RNG	Range Details	C	1	

Segment: **TMP** Temperature
Position: 00320 (Trigger Segment)
Group: Segment Group 8 (Temperature) Conditional (Dependent)
Level: 2
Usage: Mandatory
Max Use: 1
Purpose: A segment which identifies the transport temperature setting of the container.
Dependency Notes:
Semantic Notes:
Comments:
Notes: Example: Equipment inside temperature must be 5° C
 TMP+2+5:CEL'

Data Element Summary

<u>Data Element</u>	<u>Component Element</u>	<u>Name</u>	<u>Base Attributes</u>	<u>User Attributes</u>
6245		TEMPERATURE TYPE CODE QUALIFIER Code qualifying the type of a temperature. 2 Transport temperature	M 1 an..3	M
C239		TEMPERATURE SETTING The temperature under which the goods are (to be) stored or shipped.	C 1	R
	6246	Temperature degree To specify the value of a temperature.	C n..15	R
	6411	Measurement unit code Code specifying the unit of measurement. CEL Celsius FAH Fahrenheit	C an..8	R

Segment:	RNG Range Details
Position:	00330
Group:	Segment Group 8 (Temperature) Conditional (Dependent)
Level:	3
Usage:	Conditional (Optional)
Max Use:	1
Purpose:	A segment to specify the transport temperature range setting of the container.
Dependency Notes:	
Semantic Notes:	
Comments:	
Notes:	Only to be used when a temperature range is to be specified. When a set temperature is to be specified, the TMP segment must be used.
	Example: Temperature should not be lower than 2° C or higher than 7° C.
	RNG+5+CEL:2:7'

Data Element Summary

<u>Data Element</u>	<u>Component Element</u>	<u>Name</u>	<u>Base Attributes</u>	<u>User Attributes</u>
6167		RANGE TYPE CODE QUALIFIER Code qualifying a type of range. 5 Temperature range	M 1 an..3	M
C280		RANGE Range minimum and maximum limits.	C 1	R
	6411	Measurement unit code Code specifying the unit of measurement. CEL Celsius FAH Fahrenheit	M an..8	M
	6162	Range minimum quantity To specify the minimum value of a range.	C n..18	R
	6152	Range maximum quantity To specify the maximum value of a range.	C n..18	R

Segment: **SEL** Seal Number
Position: 00340
Group: Segment Group 6 (Equipment Details) Conditional (Optional)
Level: 2
Usage: Conditional (Dependent)
Max Use: 7
Purpose: A segment identifying a seal number related to the equipment.
Dependency Notes:
Semantic Notes:
Comments:

Notes: Usage complemented in local document if mentioned in that document.
Segment must be used when the transport equipment is full (EQD:8169 = '5').
Not applicable to general cargo shipment (EQD:8053 = 'BB').
Example: Carrier seal 6629290
SEL+6629290+CA'
Example: Mechanical seal 591753 in right condition
SEL+591753+++1+++1'
Example: Illegible seal from unknown origin
SEL+ILLEGIBLE+AB'

Data Element Summary

<u>Data Element</u>	<u>Component Element</u>	<u>Name</u>	<u>Base Attributes</u>		<u>User Attributes</u>
9308		TRANSPORT UNIT SEAL IDENTIFIER	C	1 an..35	R
		The identification number of a seal affixed to a transport unit.			
		<i>The value will be used in "Seal Number" element in SeaWarehouseKeeperContainerReport.</i>			
C215		SEAL ISSUER	C	1	O
		Identification of the issuer of a seal on equipment either by code or by name.			
	9303	Sealing party name code	C	an..3	R
		Code specifying the name of the sealing party.			
		Refer to D.16A Data Element Dictionary for acceptable code values.			
	1131	Code list identification code	C	an..17	X
	3055	Code list responsible agency code	C	an..3	X
	9302	Sealing party name	C	an..35	O
		Name of the sealing party.			

Only for compatibility with SMDG proposal. It will not be processed by JUL system.

4517	SEAL CONDITION CODE	C 1 an..3	O
	Code specifying the condition of a seal. Refer to D.16A Data Element Dictionary for acceptable code values.		
C208	IDENTITY NUMBER RANGE	C 1	X
	Goods item identification numbers, start and end of consecutively numbered range.		
7402	Object identifier	M an..35	X
	Code specifying the unique identity of an object.		
7402	Object identifier	C an..35	X
	Code specifying the unique identity of an object.		
4525	SEAL TYPE CODE	C 1 an..3	O
	To specify a type of seal. Refer to D.16A Data Element Dictionary for acceptable code values.		

Segment: **FTX** Free Text
Position: 00350
Group: Segment Group 6 (Equipment Details) Conditional (Optional)
Level: 2
Usage: Conditional (Optional)
Max Use: 8
Purpose: A segment to specify supplementary information related to the equipment, such as: -
 blockade reason - government inspection service - container loading remarks -
 container remarks - container order information - additional remarks concerning
 the container - container safety convention plate - continuous examination
 program (ACEP)

Dependency Notes:**Semantic Notes:****Comments:**

Notes: Usage complemented in local document if mentioned in that document.

This segment is required in case of general cargo shipment (EQD:8053 = 'BB') to inform the number and type of volumes, according to UN/ECE Recommendation 21 - Codes for Types of Cargo, Packages and Packaging Materials according to Annex V and Annex VI (Doc. Ref. TRADE/CEFACT/2002/), being moved. If it is a bulk cargo (solid or liquid) then the number of volumes is 1 (one).

Otherwise this segment is to report complementary information, compulsory or not.

Example: The transport equipment is being reported for the first time in this operation and it is confirmed.

FTX+WHI+++CreateAndFinalize'

Example: The general cargo shipment is made of 8 barrels.

FTX+PAC+++8:BA'

Example: Container loaded by quay gantru POG-1.

FTX+AGK+++POG-1'

Data Element Summary

Data Element	Component Element	Name	Base Attributes	User Attributes
4451		TEXT SUBJECT CODE QUALIFIER	M 1 an..3	M
		Code qualifying the subject of the text.		
	AAA	Goods item description		
	AAI	General information		
	ABS	Additional conditions		
		To be used for VGM related information.		
	ACF	Additional attribute information		

					If DE:4451 = 'HAN'.
	ZZZ				Mutually defined
3055	Code list responsible agency code	C	an..3	O	
	Code specifying the agency responsible for a code list.				
	Only for backward compatibility.				
	184				AU, ACOS (Australian Chamber of Shipping)
					If DE:4451 = 'HAN'.
C108	TEXT LITERAL	C	1	R	
	Free text; one to five lines.				
4440	Free text	M	an..512	M	
	Free form text.				
	If DE:4441 in {'SM1', 'SM2'} this element should contain the reference of the certificate for ascertainment of VGM according to method 1 or 2.				
	If DE:4441 = 'DRF' this element should contain the reference to weighting equipment certificate (SM1) or method certification (SM2).				
	If DE:4451 = 'PAC' this element should contain the number of volumes of a general cargo shipment.				
	If DE:4451 = 'AGK' this element should contain an identification of the terminal equipment that executed the discharge/load moment of the equipment or general cargo shipment to which this group occurrence refers.				
	<i>If DE:4451 = 'PAC' this element will placed in "Number Of Packages" in SeaWarehouseKeeperCargoReport.</i>				
	<i>If DE:4451 = 'WHI' the value in this element will be placed in element "Action" in element "Item".</i>				
4440	Free text	C	an..512	O	
	Free form text.				
	If DE:4451 = 'PAC' this element will contain the type of volumes according to UN/ECE Recommendation 21 - Code for Types of Cargo, Packages and Packing Materials, Annex V and Annex VI.				
	<i>If DE:4451 = 'PAC' this element will placed in "Nature Of Volumes" in SeaWarehouseKeeperCargoReport.</i>				
4440	Free text	C	an..512	O	
	Free form text.				
4440	Free text	C	an..512	O	
	Free form text.				
4440	Free text	C	an..512	O	
	Free form text.				

3453	LANGUAGE NAME CODE	C	1	an..3	X
4447	FREE TEXT FORMAT CODE	C	1	an..3	X

Group: **DGS** Segment Group 9: Dangerous Goods
Position: 00370
Group: Segment Group 6 (Equipment Details) Conditional (Optional)
Level: 2
Usage: Conditional (Optional)
Max Use: 99
Purpose: A group of segments to specify dangerous goods details.
Notes: The group is just used to declare the presence of dangerous goods.
 However the data provided will be kept.

Segment Summary

	Pos.	Seg.		Req.	Max.	Group:
	<u>No.</u>	<u>ID</u>	<u>Name</u>	<u>Des.</u>	<u>Use</u>	<u>Repeat</u>
M	00380	DGS	Dangerous Goods	M	1	
O	00390	FTX	Free Text	C	9	

Segment: **DGS** Dangerous Goods
Position: 00380 (Trigger Segment)
Group: Segment Group 9 (Dangerous Goods) Conditional (Optional)
Level: 2
Usage: Mandatory
Max Use: 1
Purpose: A segment to identify the UN-number and the class of the dangerous goods loaded in the container.

Dependency Notes:**Semantic Notes:****Comments:**

Notes: Usage complemented in local document if mentioned in that document.

Example: Goods with IMDG code 6.1, with UNDG 3253.

DGS+IMD+6.1+3253'

Data Element Summary

<u>Data Element</u>	<u>Component Element</u>	<u>Name</u>	<u>Base Attributes</u>			<u>User Attributes</u>
8273		DANGEROUS GOODS REGULATIONS CODE Code specifying a dangerous goods regulation. IMD IMO IMDG code	C	1	an..3	R
C205		HAZARD CODE The identification of the dangerous goods in code.	C	1		R
	8351	Hazard identification code Code identifying a hazard. IMDG class / sub-class number.	M		an..7	M
<i>The value will be used to identify the value to use in "Dangerous Goods" element.</i>						
<i>If the value in C205:8351 is present, then the value is "Yes". Otherwise is "No".</i>						
	8078	Additional hazard classification identifier To identify an additional hazard classification. Only for compatibility with SMDG proposal. It will not be processed by JUL system.	C		an..7	O
	8092	Hazard code version identifier To identify the version number of a hazard code. Only for compatibility with SMDG proposal. It will not be processed by JUL system.	C		an..10	O
C234		UNDG INFORMATION Information on dangerous goods, taken from the United Nations Dangerous Goods classification. Usage complemented in local document if mentioned in that document.	C	1		O

7124	United Nations Dangerous Goods (UNDG) identifier	C	n4	O
	The unique serial number assigned within the United Nations to substances and articles contained in a list of the dangerous goods most commonly carried.			
	UNDG number			
7088	Dangerous goods flashpoint description	C	an..8	X
C223	DANGEROUS GOODS SHIPMENT FLASHPOINT	C	1	O
	Temperature at which a vapor can be ignited as per ISO 1523/73.			
	Only for compatibility with SMDG proposal. It will not be processed by JUL system.			
7106	Shipment flashpoint degree	C	n3	O
	To specify the value of the flashpoint of a shipment.			
6411	Measurement unit code	C	an..8	O
	Code specifying the unit of measurement.			
8339	PACKAGING DANGER LEVEL CODE	C	1 an..3	O
	Code specifying the level of danger for which the packaging must cater.			
	1	Great danger		
		Packing Group I		
	2	Medium danger		
		Packing Group II		
	3	Minor danger		
		Packing Group III		
8364	EMERGENCY PROCEDURE FOR SHIPS IDENTIFIER	C	1 an..8	O
	To identify the emergency procedure number for ships transporting dangerous goods. Synonym: EMS Number.			
	Only for compatibility with SMDG proposal. It will not be processed by JUL system.			
8410	HAZARD MEDICAL FIRST AID GUIDE IDENTIFIER	C	1 an..4	O
	To identify a Medical First Aid Guide (MFAG) for hazardous goods.			
	Only for compatibility with SMDG proposal. It will not be processed by JUL system.			
8126	TRANSPORT EMERGENCY CARD IDENTIFIER	C	1 an..10	O
	To identify a transport emergency (TREM) card.			
	Only for compatibility with SMDG proposal. It will not be processed by JUL system.			
C235	HAZARD IDENTIFICATION PLACARD DETAILS	C	1	O
	These numbers appear on the hazard identification placard required on the means of transport.			
	Only for compatibility with SMDG proposal. It will not be processed			

Segment: **FTX** Free Text
Position: 00390
Group: Segment Group 9 (Dangerous Goods) Conditional (Optional)
Level: 3
Usage: Conditional (Optional)
Max Use: 9
Purpose: A segment to give additional information regarding dangerous goods.
Dependency Notes:
Semantic Notes:
Comments:
Notes: Only for compatibility with SMDG proposal. It will not be processed by JUL system.

Data Element Summary

<u>Data Element</u>	<u>Component Element</u>	<u>Name</u>	<u>Base Attributes</u>		<u>User Attributes</u>
4451		TEXT SUBJECT CODE QUALIFIER Code qualifying the subject of the text. Refer to D.16A Data Element Dictionary for acceptable code values.	M	1 an..3	M
4453		FREE TEXT FUNCTION CODE Code specifying the function of free text. Refer to D.16A Data Element Dictionary for acceptable code values.	C	1 an..3	O
C107		TEXT REFERENCE Coded reference to a standard text and its source.	C	1	O
	4441	Free text description code Code specifying free form text.	M	an..17	M
	1131	Code list identification code Code identifying a user or association maintained code list.	C	an..17	O
	3055	Code list responsible agency code Code specifying the agency responsible for a code list. Refer to D.16A Data Element Dictionary for acceptable code values.	C	an..3	O
C108		TEXT LITERAL Free text; one to five lines.	C	1	O
	4440	Free text Free form text.	M	an..512	M
	4440	Free text Free form text.	C	an..512	O
	4440	Free text Free form text.	C	an..512	O
	4440	Free text Free form text.	C	an..512	O
	4440	Free text Free form text.	C	an..512	O

	Free form text.				
3453	LANGUAGE NAME CODE	C	1	an..3	O
	Code specifying the language name.				
4447	FREE TEXT FORMAT CODE	C	1	an..3	O
	Code specifying the format of free text.				
	Refer to D.16A Data Element Dictionary for acceptable code values.				

Segment: **EQA** Attached Equipment
Position: 00440
Group: Segment Group 6 (Equipment Details) Conditional (Optional)
Level: 2
Usage: Conditional (Optional)
Max Use: 9
Purpose: A segment to identify clip-on units, such as: - generator sets
Dependency Notes:
Semantic Notes:
Comments:
Notes: Only for compatibility with SMDG proposal. It will not be processed by JUL system.

Data Element Summary

Data Element	Component Element	Name	Base		User
			Attributes		Attributes
8053		EQUIPMENT TYPE CODE QUALIFIER Code qualifying a type of equipment. Refer to D.16A Data Element Dictionary for acceptable code values.	M	1 an..3	M
C237		EQUIPMENT IDENTIFICATION Marks (letters/numbers) identifying equipment.	C	1	O
	8260	Equipment identifier To identify equipment.	C	an..17	O
	1131	Code list identification code	C	an..17	X
	3055	Code list responsible agency code	C	an..3	X
	3207	Country identifier	C	an..3	X

Segment: **HAN** Handling Instructions
Position: 00470
Group: Segment Group 6 (Equipment Details) Conditional (Optional)
Level: 2
Usage: Conditional (Optional)
Max Use: 3
Purpose: A segment to specify handling instructions related to the equipment.

Dependency Notes:**Semantic Notes:****Comments:**

Notes: Usage complemented in local document if mentioned in that document.

To be used if the message is a Discharge Report (BGM:1001 = '119').

This segment is used to specify additional requirements related with the handling of the transport equipment. The instructions are given by the code in DE:4079. As several instructions may be given, the segment can occur several times.

If it is 'DIL' or 'DIT' it means that the transport equipment will leave port by rail or by truck respectively.

If it is 'RCT' it means the transport equipment requires to be connected to electric power network. Alternatively this requirement can be expressed by sending SG8(TMP) group.

If it is 'SQ' or 'UQ' means that an operation of stuff or unstuff is needed to be performed.

Example: Equipment will be unstuffed on quay.

HAN+UQ'

Example: Equipment needs electric power.

HAN+RCT'

Data Element Summary

<u>Data Element</u>	<u>Component Element</u>	<u>Name</u>	<u>Base Attributes</u>		<u>User Attributes</u>
C524		HANDLING INSTRUCTIONS	C	1	R
	4079	Handling instruction description code	C	an..3	R

Code specifying a handling instruction.
Based on the code proposed by ITIGG in the document "CODES FOR USE IN THE FREE TEXT (FTX) SEGMENT OF THE UN/EDIFACT CONTAINER MESSAGES", reference JM4/ITIGG/120/v.17, version 1.7 - August 2015, Additions by SMDG

'Container Messages' subgroup.

The value will be used in "Handling Instructions" element following the below correspondence.

If C524.4079 = 'RCT' then the value is "ElectricOrTemperature".

If C524.4079 = 'SQ' then the value is "Consolidate".

If C524.4079 = 'UQ' then the value is "Deconsolidate".

If C524.4079 = 'DIL' then the value is "Rail".

If C524.4079 = 'DIT' then the value is "Truck".

DIL	Discharge/discharged onto rail
	<i>Use value "Railway".</i>
DIT	Discharge/discharged onto truck
	<i>Use value "Truck".</i>
RCT	Connect/connected to electrical mains & control temperature
	<i>Use value "ElectricOrTemperature".</i>
SQ	Stuff/stuffed on quay
	<i>Use value "Consolidate".</i>
UQ	Unstuff/unstuffed on quay
	<i>Use value "Deconsolidate".</i>

1131	Code list identification code	C	an..17	O
	Code identifying a user or association maintained code list.			
	Only for compatibility with SMDG proposal. It will not be processed by JUL system.			
3055	Code list responsible agency code	C	an..3	O
	Code specifying the agency responsible for a code list.			
	Only for compatibility with SMDG proposal. It will not be processed by JUL system.			
	Refer to D.16A Data Element Dictionary for acceptable code values.			
4078	Handling instruction description	C	an..512	O
	Free form description of a handling instruction.			

Only for compatibility with SMDG proposal. It will not be processed by JUL system.

C218	HAZARDOUS MATERIAL	C	1	X
	To specify a hazardous material.			
7419	Hazardous material category name code	C	an..7	X
	Code specifying a kind of hazard for a material.			
1131	Code list identification code	C	an..17	X
	Code identifying a user or association maintained code list.			
3055	Code list responsible agency code	C	an..3	X
	Code specifying the agency responsible for a code list.			
7418	Hazardous material category name	C	an..35	X
	Name of a kind of hazard for a material.			

Group:	DAM Segment Group 11: Damage
Position:	00480
Group:	Segment Group 6 (Equipment Details) Conditional (Optional)
Level:	2
Usage:	Conditional (Optional)
Max Use:	9
Purpose:	A group of segments to specify damage details related to the equipment.
Notes:	This group is used to declare detected damages on the transport equipment or on general cargo shipment.
	In the case of transport equipment (EQD:8053 <> 'BB'), it is advised the usage of ISO 9897 Annex D to inform on the type of damage.
	In the case of general cargo shipment (EQD:8053 = 'BB') the purpose is to inform if a damage was detected on any volumes moved. For exemple, a general cargo shipment is made of 10 aluminium drums, and two are damage. This group allows to declare this situation.

Segment Summary

	Pos.	Seg.		Req.	Max.	Group:
	<u>No.</u>	<u>ID</u>	<u>Name</u>	<u>Des.</u>	<u>Use</u>	<u>Repeat</u>
M	00490	DAM	Damage	M	1	
O	00500	COD	Component Details	C	1	

Segment: **DAM** Damage
Position: 00490 (Trigger Segment)
Group: Segment Group 11 (Damage) Conditional (Optional)
Level: 2
Usage: Mandatory
Max Use: 1
Purpose: A segment to specify equipment damages, such as the point of the damage on the equipment, and the type of damage.

Dependency Notes:**Semantic Notes:****Comments:**

Notes: Example: Equipment is dented and holed on the right side down to the front.

DAM+1+DH:::DENTED AND HOLED+:::RIGHT SIDE DOWN FRONT'

Example: General cargo shipment consists of 10 roll cages. One has a broken wheel.

DAM+2+:::1 CAGE W/ 1 BROKEN WHEEL'

Data Element Summary

<u>Data Element</u>	<u>Component Element</u>	<u>Name</u>	<u>Base Attributes</u>		<u>User Attributes</u>
7493		DAMAGE DETAILS CODE QUALIFIER	M	1 an..3	M
		Code qualifying the damage details.			
	1	Equipment damage			
		Not applicable to general cargo shipment (EQD:8053 <> 'BB').			
	2	Consignment damage			
		Appllicable only to general cargo shipment (EQD:8053 = 'BB').			
	3	Means of transport damage			
C821		TYPE OF DAMAGE	C	1	O
		To specify the type of damage to an object.			
	7501	Damage type description code	C	an..3	O
		Code specifying the type of damage to an object.			
		ISO 9897, Annex D - Damage types, CEDEX Code.			
		Not applicable to general cargo shipment (EQD:8053 <> 'BB').			
	1131	Code list identification code	C	an..17	X
	3055	Code list responsible agency code	C	an..3	X
	7500	Damage type description	C	an..35	R
		Free form description of the type of damage to an object.			
		Damage type (free text).			
C822		DAMAGE AREA	C	1	O
		To specify where the damage is on an object.			
	7503	Damage area description code	C	an..4	O

		Code specifying where the damage is on an object.		
		<i>Only for compatibility with SMDG proposal. It will not be processed by JUL system.</i>		
	1131	Code list identification code	C	an..17 X
	3055	Code list responsible agency code	C	an..3 X
	7502	Damage area description	C	an..35 R
		Free form description of where the damage is on an object.		
C825		DAMAGE SEVERITY	C 1	O
		To specify the severity of damage to an object.		
		<i>Only for compatibility with SMDG proposal. It will not be processed by JUL system.</i>		
	7509	Damage severity description code	C	an..3 O
		Code specifying the severity of damage.		
	1131	Code list identification code	C	an..17 X
	3055	Code list responsible agency code	C	an..3 X
	7508	Damage severity description	C	an..35 O
		Free form description of the severity of damage.		
C826		ACTION	C 1	O
		To indicate an action which has been taken or is to be taken (e.g. in relation to a certain object).		
		<i>Only for compatibility with SMDG proposal. It will not be processed by JUL system.</i>		
	1229	Action code	C	an..3 O
		Code specifying the action to be taken or already taken.		
		Refer to D.16A Data Element Dictionary for acceptable code values.		
	1131	Code list identification code	C	an..17 X
	3055	Code list responsible agency code	C	an..3 X
	1228	Action description	C	an..35 O
		Free form description of the action to be taken or already taken.		

Segment: **COD** Component Details
Position: 00500
Group: Segment Group 11 (Damage) Conditional (Optional)
Level: 3
Usage: Conditional (Optional)
Max Use: 1
Purpose: A segment to specify component details of the damaged equipment.

Dependency Notes:**Semantic Notes:****Comments:**

Notes: Only for compatibility with SMDG proposal. It will not be processed by JUL system.

Data Element Summary

Data Element	Component Element	Name	Base Attributes		User Attributes
C823		TYPE OF UNIT/COMPONENT	C	1	O
		To identify the type of unit/component of an object (e.g. lock, door, tyre).			
	7505	Unit or component type description code	C	an..3	O
		Code specifying a type of unit or component.			
	1131	Code list identification code	C	an..17	X
	3055	Code list responsible agency code	C	an..3	X
	7504	Unit or component type description	C	an..35	O
		Free form description of a type of unit or component.			
C824		COMPONENT MATERIAL	C	1	O
		To identify the material of which a component is composed (e.g. steel, plastics).			
	7507	Component material description code	C	an..3	O
		Code specifying a component material.			
	1131	Code list identification code	C	an..17	X
	3055	Code list responsible agency code	C	an..3	X
	7506	Component material description	C	an..35	O
		Free form description of a component material.			

Group: **TDT** Segment Group 12: Transport Information
Position: 00510
Group: Segment Group 6 (Equipment Details) Conditional (Optional)
Level: 2
Usage: Conditional (Optional)
Max Use: 2
Purpose: A group of segments to specify the planned on-carriage details in case this message is a discharge report message.
Notes: This group is to send information regarding the next/previous vessel call in the presence of a transshipment situation.

In some situations, for purpose planning it is useful to make a reference to a future voyage or call of a means of transport. This group fills this requirement allowing the reference to on or two ahead voyages or calls in relation to the call identified in SG2.

Segment Summary

	Pos.	Seg.		Req.	Max.	Group:
	No.	ID	Name	Des.	Use	Repeat
M	00520	TDT	Transport Information	M	1	
	00540		Segment Group 13: Place/Location Identification	C		4

Segment: **TDT** Transport Information
Position: 00520 (Trigger Segment)
Group: Segment Group 12 (Transport Information) Conditional (Optional)
Level: 2
Usage: Mandatory
Max Use: 1
Purpose: A segment to identify the on-carriage transport details of the mode, means of transport by which the container will depart after being discharged.

Dependency Notes:**Semantic Notes:****Comments:**

Notes: Example: The transport equipment arrived to the port in ocean vessel operated by MSC and identified by call sign VRLC2 during voyage NZ623A

TDT+10+NZ623A+1+13+MSC+++VRLC2:103'

Data Element Summary

<u>Data Element</u>	<u>Component Element</u>	<u>Name</u>	<u>Base Attributes</u>		<u>User Attributes</u>
8051		TRANSPORT STAGE CODE QUALIFIER	M	1 an..3	M
		Code qualifying a specific stage of transport.			
	1	Inland transport Only for compatibility with SMDG proposal. It will not be processed by JUL system.			
	10	Pre-carriage transport In case the message corresponds to a Loading Report (BGM:1001 = '122').			
	28	Second on-carriage transport In case the message corresponds to a Discharge Report (BGM:1001 = '119').			
	30	On-carriage transport In case the message corresponds to a Discharge Report (BGM:1001 = '119').			
8028		MEANS OF TRANSPORT JOURNEY IDENTIFIER	C	1 an..17	O
		To identify a journey of a means of transport. Usage complemented in local document if mentioned in that document.			
C220		MODE OF TRANSPORT	C	1	R
		Method of transport code or name. Code preferred.			
	8067	Transport mode name code	C	an..3	R
		Code specifying the name of a mode of transport. UN Recommendation 19 - Code for Modes of Transport.			
	1	Maritime			
	2	Rail			

					Only for compatibility with SMDG proposal. It will not be processed by JUL system.
	3	Road			
					Only for compatibility with SMDG proposal. It will not be processed by JUL system.
	4	Air			
					Only for compatibility with SMDG proposal. It will not be processed by JUL system.
	8	Inland Water			
					Only for compatibility with SMDG proposal. It will not be processed by JUL system.
	9	Mode unknown			
					Only for compatibility with SMDG proposal. It will not be processed by JUL system.
C001	8066	Transport mode name	C	an..17	X
		TRANSPORT MEANS	C	1	O
		Code and/or name identifying the type of means of transport.			
		Usage complemented in local document if mentioned in that document.			
	8179	Transport means description code	C	an..8	O
		Code specifying the means of transport.			
		Usage complemented in local document if mentioned in that document.			
		UN Recommendation 28 - Code for Types of Means of Transport.			
	1131	Code list identification code	C	an..17	X
	3055	Code list responsible agency code	C	an..3	X
	8178	Transport means description	C	an..17	O
		Free form description of the means of transport.			
		Only for compatibility with SMDG proposal. It will not be processed by JUL system.			
C040		CARRIER	C	1	O
		Identification of a carrier by code and/or by name. Code preferred.			
		Usage complemented in local document if mentioned in that document.			
	3127	Carrier identifier	C	an..17	O
		To identify a carrier.			
	1131	Code list identification code	C	an..17	O
		Code identifying a user or association maintained code list.			
		172	Carriers		
	3055	Code list responsible agency code	C	an..3	O
		Code specifying the agency responsible for a code list.			
		20	BIC (Bureau International des Containeurs)		
		87	Assigned by carrier		
		166	US, National Motor Freight Classification Association		
		184	AU, ACOS (Australian Chamber of Shipping)		
					Only for compatibility with SMDG proposal. It will

					not be processed by JUL system.
	306	SMDG (Ship-planning Message Design Group)			Only for compatibility with SMDG proposal. It will not be processed by JUL system.
	SMD	SMDG (Shipplanning Message Development Group)			Only for compatibility with SMDG proposal. It will not be processed by JUL system.
	ZZZ	Mutually defined			
	3126	Carrier name	C	an..35	O
		Name of a carrier.			Only for compatibility with SMDG proposal. It will not be processed by JUL system.
8101		TRANSIT DIRECTION INDICATOR CODE	C	1 an..3	X
C401		EXCESS TRANSPORTATION INFORMATION	C	1	X
		To provide details of reason for, and responsibility for, use of transportation other than normally utilized.			
	8457	Excess transportation reason code	M	an..3	X
		Code specifying the reason for excess transportation.			
	8459	Excess transportation responsibility code	M	an..3	X
		Code specifying the responsibility for excess transportation.			
	7130	Customer shipment authorisation identifier	C	an..17	X
		To identify the authorisation to ship issued by the customer.			
C222		TRANSPORT IDENTIFICATION	C	1	O
		Code and/or name identifying the means of transport.			Usage complemented in local document if mentioned in that document.
	8213	Transport means identification name identifier	C	an..35	O
		Identifies the name of the transport means.			Usage complemented in local document if mentioned in that document.
	1131	Code list identification code	C	an..17	O
		Code identifying a user or association maintained code list.			
		103 Call sign directory			
		146 Means of transport identification			
	3055	Code list responsible agency code	C	an..3	O
		Code specifying the agency responsible for a code list.			Only for compatibility with SMDG proposal. It will not be processed by JUL system.
		11 Lloyd's register of shipping			
		ZZZ Mutually defined			
	8212	Transport means identification name	C	an..70	O
		Name identifying a means of transport.			Identification of the means of transport by name (free text).
	8453	Transport means nationality code	C	an..3	O
		Code specifying the nationality of a means of transport.			

	Flag of means of transport (ISO 3166 country code, 2 alpha).				
8281	TRANSPORT MEANS OWNERSHIP INDICATOR CODE	C	1	an..3	X
C003	POWER TYPE	C	1		X
	To specify the type of power.				
7041	Power type code	C		an..3	X
	Code indicating the type of power.				
1131	Code list identification code	C		an..17	X
	Code identifying a user or association maintained code list.				
3055	Code list responsible agency code	C		an..3	X
	Code specifying the agency responsible for a code list.				
7040	Power type description	C		an..17	X
	Description of the type of power.				

Group: **LOC** Segment Group 13: Place/Location Identification
Position: 00540
Group: Segment Group 12 (Transport Information) Conditional (Optional)
Level: 3
Usage: Conditional (Optional)
Max Use: 4
Purpose: A group of segments to identify locations related to on- carriage transport.
Notes: This group identifies locations related to the pre-carriage or on-carriage transport.

Segment Summary

	Pos.	Seg.		Req.	Max.	Group:
	<u>No.</u>	<u>ID</u>	<u>Name</u>	<u>Des.</u>	<u>Use</u>	<u>Repeat</u>
M	00550	LOC	Place/Location Identification	M	1	
O	00560	DTM	Date/Time/Period	C	9	

Segment: **LOC** Place/Location Identification
Position: 00550 (Trigger Segment)
Group: Segment Group 13 (Place/Location Identification) Conditional (Optional)
Level: 3
Usage: Mandatory
Max Use: 1
Purpose: A segment identifying a location related to the transport details, such as: - place of departure

Dependency Notes:**Semantic Notes:****Comments:**

Notes: Example: Transport equipment departed from Cadiz

LOC+5+ESCAD:139.6'

Data Element Summary

<u>Data Element</u>	<u>Component Element</u>	<u>Name</u>	<u>Base Attributes</u>	<u>User Attributes</u>
3227		LOCATION FUNCTION CODE QUALIFIER	M 1 an..3	M
		Code identifying the function of a location.		
		Only for compatibility with SMDG proposal. It will not be processed by JUL system.		
	5	Place of departure		
		In case of a Loading Report (BGM:1001 = '122').		
	7	Place of delivery		
		In case of a Discharge Report (BGM:1001 = '119').		
	8	Place of destination		
		It will be treated like '7'.		
	9	Place of loading		
		Only for compatibility with SMDG proposal. It will not be processed by JUL system.		
	11	Place of discharge		
		Only for compatibility with SMDG proposal. It will not be processed by JUL system.		
	13	Place of transshipment		
		Only for compatibility with SMDG proposal. It will not be processed by JUL system.		
	88	Place of receipt		
		It will be treated like '5'.		
	170	Final port of discharge		
		Only for compatibility with SMDG proposal. It will not be processed by JUL system.		
	171	Place of destination for pre-stacking prior to stowage		
		Only for compatibility with SMDG proposal. It will not be processed by JUL system.		
	175	Activity location		

Only for compatibility with SMDG proposal. It will not be processed by JUL system.				
C517	LOCATION IDENTIFICATION	C	1	O
	Identification of a location by code or name.			
3225	Location identifier	C	an..35	O
	To identify a location.			
1131	Code list identification code	C	an..17	O
	Code identifying a user or association maintained code list.			
	139	Port		
3055	Code list responsible agency code	C	an..3	O
	Code specifying the agency responsible for a code list.			
	6	UN/ECE (United Nations - Economic Commission for Europe)		
3224	Location name	C	an..256	O
	Name of the location.			
	Only for compatibility with SMDG proposal. It will not be processed by JUL system.			
C519	RELATED LOCATION ONE IDENTIFICATION	C	1	O
	Identification the first related location by code or name.			
	Only for compatibility with SMDG proposal. It will not be processed by JUL system.			
3223	First related location identifier	C	an..35	O
	To identify a first related location.			
1131	Code list identification code	C	an..17	O
	Code identifying a user or association maintained code list.			
3055	Code list responsible agency code	C	an..3	O
	Code specifying the agency responsible for a code list.			
	Refer to D.16A Data Element Dictionary for acceptable code values.			
3222	First related location name	C	an..70	O
	Name of first related location.			
C553	RELATED LOCATION TWO IDENTIFICATION	C	1	O
	Identification of second related location by code or name.			
	Only for compatibility with SMDG proposal. It will not be processed by JUL system.			
3233	Second related location identifier	C	an..35	O
	To identify a second related location.			
1131	Code list identification code	C	an..17	O
	Code identifying a user or association maintained code list.			
3055	Code list responsible agency code	C	an..3	O
	Code specifying the agency responsible for a code list.			
	Refer to D.16A Data Element Dictionary for acceptable code values.			
3232	Second related location name	C	an..70	O

5479	Name of the second related location. RELATION CODE	C	1	an..3	X
-------------	--	----------	----------	--------------	----------

Segment: **DTM** Date/Time/Period
Position: 00560
Group: Segment Group 13 (Place/Location Identification) Conditional (Optional)
Level: 4
Usage: Conditional (Optional)
Max Use: 9
Purpose: A segment to specify a date/time relating to the on- carriage transport, such as arrival.

Dependency Notes:**Semantic Notes:****Comments:**

Notes: Only for compatibility with SMDG proposal. It will not be processed by JUL system.

Data Element Summary

Data Element	Component Element	Name	Base Attributes		User Attributes
C507		DATE/TIME/PERIOD	M	1	M
		Date and/or time, or period relevant to the specified date/time/period type.			
	2005	Date or time or period function code qualifier	M	an..3	M
		Code qualifying the function of a date, time or period. Refer to D.16A Data Element Dictionary for acceptable code values.			
	2380	Date or time or period text	C	an..35	O
		The value of a date, a date and time, a time or of a period in a specified representation.			
	2379	Date or time or period format code	C	an..3	O
		Code specifying the representation of a date, time or period. Refer to D.16A Data Element Dictionary for acceptable code values.			

Segment: **NAD** Name and Address
Position: 00570
Group: Segment Group 6 (Equipment Details) Conditional (Optional)
Level: 2
Usage: Conditional (Optional)
Max Use: 3
Purpose: A segment to specify a related address or party, such as: - container operator
Dependency Notes:
Semantic Notes:
Comments:
Notes: Usage complemented in local document if mentioned in that document.

This segment is used to specify the Shipping Agent that is responsible for the equipment in the call, whenever it is responsible by the vessel call or not. In this case DE:3035 is 'AG'.

it is also used to specify the the entities related with SOLAS convention. In this case DE:3035 in {'AM', 'SPC', 'WPA'}.

Example: Equipment responsible agent identified by EORI PT556734947.

NAD+AG+PT556734947:167:155'

Example: Authorised person signing for verified gross mass is Julio Silvestre.

NAD+AM+++JULIO SILVESTRE'

Data Element Summary

<u>Data Element</u>	<u>Component Element</u>	<u>Name</u>	<u>Base Attributes</u>	<u>User Attributes</u>
3035		PARTY FUNCTION CODE QUALIFIER	M 1 an..3	M
		Code giving specific meaning to a party.		
		AG Agent		
		AM Authorized official		
		Name in capitals of Authorized person signing for verified gross mass (weight) = EDI signature.		
		CA Carrier		
		Only for compatibility with SMDG proposal. It will not be processed by JUL system.		
		CB Customs broker		
		Only for compatibility with SMDG proposal. It will not be processed by JUL system.		
		CF Container operator/lessee		
		Only for compatibility with SMDG proposal. It will not be processed by JUL system.		
		CG Carrier's agent		
		Only for compatibility with SMDG proposal. It will		

		not be processed by JUL system.
CN	Consignee	Only for compatibility with SMDG proposal. It will not be processed by JUL system.
CZ	Consignor	Only for compatibility with SMDG proposal. It will not be processed by JUL system.
EQ	Empty container responsible party	Only for compatibility with SMDG proposal. It will not be processed by JUL system.
FP	Freight/charges payer	Only for compatibility with SMDG proposal. It will not be processed by JUL system.
GA	Road carrier	Only for compatibility with SMDG proposal. It will not be processed by JUL system.
GT	Rail carrier	Only for compatibility with SMDG proposal. It will not be processed by JUL system.
HR	Shipping line service	Only for compatibility with SMDG proposal. It will not be processed by JUL system.
IO	Insurance company	Only for compatibility with SMDG proposal. It will not be processed by JUL system.
JB	Goods collection party	Only for compatibility with SMDG proposal. It will not be processed by JUL system.
JC	Party at final place of positioning	Only for compatibility with SMDG proposal. It will not be processed by JUL system.
MF	Manufacturer of goods	Only for compatibility with SMDG proposal. It will not be processed by JUL system.
OG	Owner or lessor's surveyor	Only for compatibility with SMDG proposal. It will not be processed by JUL system.
OH	Lessee's surveyor	Only for compatibility with SMDG proposal. It will not be processed by JUL system.
SPC	SOLAS verified gross mass responsible party	
ST	Ship to	Only for compatibility with SMDG proposal. It will not be processed by JUL system.
WPA	Weighting party	

C082	PARTY IDENTIFICATION DETAILS	C	1	D
	Identification of a transaction party by code.			
3039	Party identifier	M	an..35	M

Code specifying the identity of a party.

Number corresponding to EORI of the entity if DE:3035 <> 'AM', or another code mutually agreed between the parties.

If DE:3035 = 'AG' then the value will be used in "Responsible Agent" element.

	1131	Code list identification code	C	an..17	O
		Code identifying a user or association maintained code list.			
		160 Party identification			
	3055	Code list responsible agency code	C	an..3	O
		Code specifying the agency responsible for a code list.			
		Only for compatibility with SMDG proposal. It will not be processed by JUL system.			
		Refer to D.16A Data Element Dictionary for acceptable code values.			
C058		NAME AND ADDRESS	C	1	O
		Unstructured name and address: one to five lines.			
		Only for compatibility with SMDG proposal. It will not be processed by JUL system.			
	3124	Name and address description	M	an..35	M
		Free form description of a name and address line.			
	3124	Name and address description	C	an..35	O
		Free form description of a name and address line.			
	3124	Name and address description	C	an..35	O
		Free form description of a name and address line.			
	3124	Name and address description	C	an..35	O
		Free form description of a name and address line.			
	3124	Name and address description	C	an..35	O
		Free form description of a name and address line.			
C080		PARTY NAME	C	1	D
		Identification of a transaction party by name, one to five lines. Party name may be formatted.			
		Required if DE:3035 in {'AM','SPC','WPA'}.			
	3036	Party name	M	an..70	M
		Name of a party.			
		If DE:3035 = 'AM' then send the name of the person authorized to sign the shipping document declaring a verified gross mass (weight).			
		If DE:3035 in {'SPC', 'WPA'} then send the company name.			
	3036	Party name	C	an..70	X
	3036	Party name	C	an..70	X
	3036	Party name	C	an..70	X
	3036	Party name	C	an..70	X

	3045	Party name format code	C	an..3	X
C059		STREET	C	1	D
		Street address and/or PO Box number in a structured address: one to four lines. Required if DE:3035 in {'SPC','WPA'}.			
	3042	Street and number or post office box identifier	M	an..35	M
		To identify a street and number and/or Post Office box number. If DE:3035 in {'SPC', 'WPA'}, then company location street and number.			
	3042	Street and number or post office box identifier	C	an..35	X
	3042	Street and number or post office box identifier	C	an..35	X
	3042	Street and number or post office box identifier	C	an..35	X
3164		CITY NAME	C	1 an..35	D
		Name of a city. If DE:3035 in {'SPC', 'WPA'}, then company location city.			
C819		COUNTRY SUBDIVISION DETAILS	C	1	O
		To specify a country subdivision, such as state, canton, county, prefecture. Only for compatibility with SMDG proposal. It will not be processed by JUL system.			
	3229	Country subdivision identifier	C	an..9	O
		To identify a country subdivision, such as state, canton, county, prefecture.			
	1131	Code list identification code	C	an..17	O
		Code identifying a user or association maintained code list.			
	3055	Code list responsible agency code	C	an..3	O
		Code specifying the agency responsible for a code list. Refer to D.16A Data Element Dictionary for acceptable code values.			
	3228	Country subdivision name	C	an..70	O
		Name of a country subdivision, such as state, canton, county, prefecture.			
3251		POSTAL IDENTIFICATION CODE	C	1 an..17	D
		Code specifying the postal zone or address. If DE:3035 in {'SPC', 'WPA'}, then send company location postal code.			
3207		COUNTRY IDENTIFIER	C	1 an..3	D
		Identification of the name of the country or other geographical entity as defined in ISO 3166-1 and UN/ECE Recommendation 3. If DE:3035 in {'SPC', 'WPA'}, then send company ISO 3166 Country Code, 2 alpha.			

Segment: **CNT** Control Total
Position: 00580
Group:
Level: 0
Usage: Conditional (Required)
Max Use: 1
Purpose: A segment to specify the number of containers in the message, explicitly given by the sender.

Dependency Notes:**Semantic Notes:****Comments:**

Notes: This segment provides the total number of equipment reported in this message. In case there are only general cargo shipments mentioned, then send 0 (zero).

Example: The message reports 20 units.

CNT+16:20'

Example: The message reports 3 general cargo shipments.

CNT+16:0'

Data Element Summary

Data Element	Component Element	Name	Base Attributes		User Attributes
C270		CONTROL	M	1	M
		Control total for checking integrity of a message or part of a message.			
	6069	Control total type code qualifier	M	an..3	M
		Code qualifying the type of control of hash total.			
		1 Total of line item quantities			
		<i>Only for compatibility with SMDG proposal. It will not be processed by JUL system.</i>			
		16 Total number of equipment			
	6066	Control total quantity	M	n..18	M
		To specify the value of a control quantity.			
	6411	Measurement unit code	C	an..8	X

Segment: **UNT** Message Trailer
Position: 00590
Group:
Level: 0
Usage: Mandatory
Max Use: 1
Purpose: A service segment ending a message, giving the total number of segments in the message (including the UNH & UNT) and the control reference number of the message.

Dependency Notes:**Semantic Notes:****Comments:****Notes:** Example: 26 sent segments, message envelope reference "1357924680"

UNT+26+1357924680'

Data Element Summary

Data Element	Component Element	Name	Base Attributes			User Attributes
0074		NUMBER OF SEGMENTS IN A MESSAGE	M	1	n..6	M
		Control count of number of segments in a message.				
0062		MESSAGE REFERENCE NUMBER	M	1	an..14	M
		Unique message reference assigned by the sender.				