

# APERAK Application Error and Acknowledgement Message

## Introduction:

The function of this message is: a) to inform a message issuer that his message has been received by the addressee's application and has been rejected due to errors encountered during its processing in the application. b) to acknowledge to a message issuer the receipt of his message by the addressee's application.

## Notes:

This Message Implementation Guideline (MIG) has been developed by JUL Project Team, in the context of the JUL Portuguese Project ([www.projeto-jul.pt](http://www.projeto-jul.pt)).

In this context, the following items are considered. The document provides the definition of a message to be used in electronic data interchange between stakeholders (Port Authorities, Terminal Operators, Carriers, Shipping Agents, etc.) acting in Portuguese ports. The purpose is to provide validation and integration results of previously sent messages between stakeholders.

The information is expressed by code, optionally complemented by textual information.

The process of given this report follows the principals described below:

- It is understood that a received message has a header, and zero or more details. For example, in a message related with transport equipment, the header contains data like the document id or the document issuer, while each detail contain the transport equipment identification and other related data specifically associated with it, like the port of loading or the weight.
- The validation process start by validating the header. If an error is found, it is kept for later. Then the process goes to the first detail. Again if an error is found, it is also kept. Then the next detail is checked, and so on, until de end of the message.
- Once the validation process completes, the kept errors are used to build the acknowledge message according to the definition in this MIG.
- If no error is found, a success code is return for the header and for each detail in the received message.
- The exception to the above point is if the error is so severe that does not allow the interpretation of the received message. Typical situations of severe syntax problems.

Due to the existence of current implementations of this message in some Portuguese ports, the document signals where backward compability is relevent. However, new or updated implementations must follow this MIG and shall ignore these specific exceptions.

This MIG provides guidance as to the recommended usage of codes, qualifiers, data elements, composites, segments and groups of segments in the D.16A APERAK. The intention is to assist developers to ensure

consistent use of the APERAK message throughout the worldwide trade and transport community.

The MIG was elaborated considering the following references:

- UN/EDIFACT D.16A APERAK
- UN/EDIFACT D.16A Data Element Codes
- UN/ECE Recommendation 7 – Numerical Representation of Dates, Time, and Periods of Time
- ITIGG: General Recommendations Version 2.1 March 2001
- ITIGG: Principles and rules for the implementation of transport EDI messages - Application Error and Acknowledgment - JM4/ITIGG/129/v.13, October 1997

Usage indicators in this MIG follow ITIGG Recommendation D4/G44.

Status Indicators (“M” and “C”) form part of the UN/EDIFACT standard and indicate a minimum requirement to fulfil the needs of the message structure. They are not adequate for implementation purposes. The Status Indicators are:

#### Value Description

##### M Mandatory

The entity marked as such must appear in all messages, and apply to these messages as well as to any associated implementation guidelines (and consequently is also a Usage Indicator).

##### C Conditional

The entity is used by agreement between trading partners.

Usage Indicators are implementation related indicators that further detail the use of “Conditional” Status Indicators. Usage Indicators are applied at all levels of the guidelines and shown adjacent to data items such as segment groups, segments, composite data elements and simple data elements. They dictate the agreed usage of the data items or entities. The Usage Indicators are:

#### Value Description

##### M Mandatory

Indicates the item is mandatory in the UN/EDIFACT message.

##### R Required

Indicates the item must be transmitted in this implementation.

##### D Dependent

Indicates that the use of the item is depending on a well-defined condition or set of conditions. These conditions must be clearly specified in the relevant implementation guideline.

##### O Optional

Indicates that this item is at the need or discretion of both trading partners.

##### X Not Used

Indicates that this item is not to be used in this implementation.

Where an item within a segment group, segment or composite data element is marked with Usage Indicators

“M” or “R”, but the segment group, segment or composite data element has been marked “O” or “D” (or for that matter “X”), the item is only to be transmitted when the segment group, segment or composite of which it is a part, is used.

Examples in the text are just related with the segments where they appear. They are not necessarily related between each other.

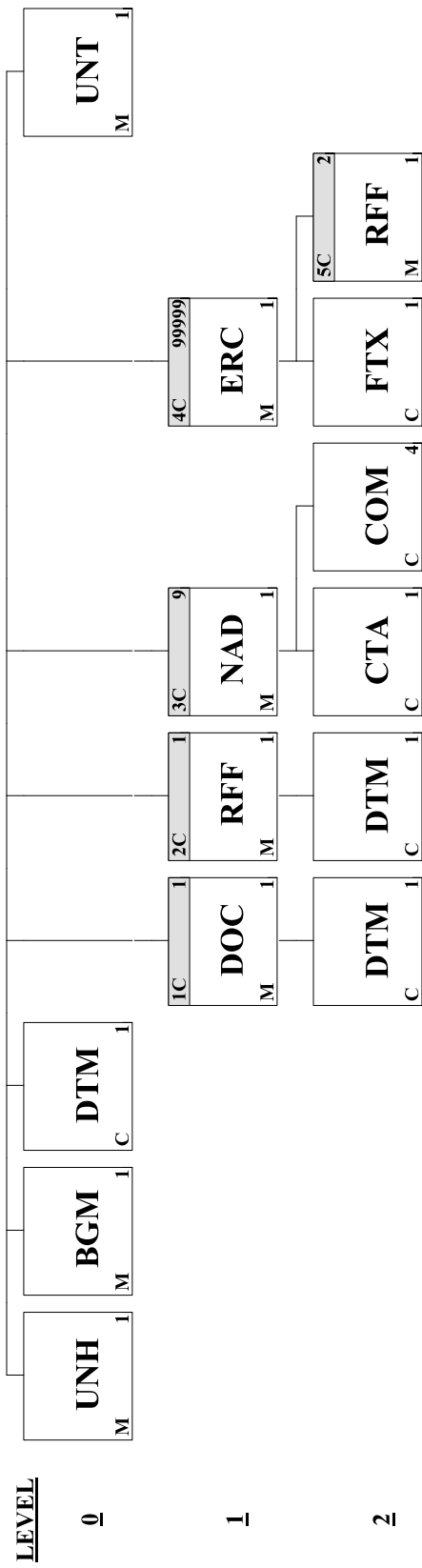
### \*\*\* Special Note On Local Usage

Due to the diverse realities of the Portuguese ports and the stakeholders operating in them, it is necessary to define local rules, codes, etc. But this needs to be done considering the harmonization framework that this document defines.

In order to avoid a heavy guideline where all local port specifics are expressed, the approach is to redirect the reader to an external document when applicable. The external document should be elaborated by the each port when justified.

However all stakeholders should have the following in mind. The local specifications are complementary to this document, they are used to document current implementations, and should not be a justification for new or updated implementations avoid the full adoption of this document.

<u>Page No.</u>	<u>Pos. No.</u>	<u>Seg. ID</u>	<u>Name</u>	<u>Base Guide</u>	<u>User Status</u>	<u>Max.Use</u>	<u>Group Repeat</u>	<u>Notes and Comments</u>
5	00010	UNH	Message Header	M	M	1		
7	00020	BGM	Beginning of Message	M	M	1		
9	00030	DTM	Date/Time/Period	C	R	1		
	00060		Segment Group 1: DOC-DTM	C	O		1	
11	00070	DOC	Document/Message Details	M	M	1		
13	00080	DTM	Date/Time/Period	C	O	1		
	00090		Segment Group 2: RFF-DTM	C	R		1	
15	00100	RFF	Reference	M	M	1		
16	00110	DTM	Date/Time/Period	C	O	1		
	00120		Segment Group 3: NAD-CTA-COM	C	R		9	
18	00130	NAD	Name and Address	M	M	1		
21	00140	CTA	Contact Information	C	O	1		
22	00150	COM	Communication Contact	C	O	4		
	00160		Segment Group 4: ERC-FTX-SG5	C	R		99999	
24	00170	ERC	Application Error Information	M	M	1		
25	00180	FTX	Free Text	C	O	1		
	00190		Segment Group 5: RFF	C	O		2	
28	00200	RFF	Reference	M	M	1		
30	00220	UNT	Message Trailer	M	M	1		



**Segment:** **UNH** Message Header  
**Position:** 00010  
**Group:**  
**Level:** 0  
**Usage:** Mandatory  
**Max Use:** 1  
**Purpose:** A service segment starting and uniquely identifying a message. The message type code for the Application error and acknowledgement message is APERAK.  
 Note: Application error and acknowledgement messages conforming to this document must contain the following data in segment UNH, composite S009:  
 Data element 0065 APERAK 0052 D 0054 16A 0051  
 UN

**Dependency Notes:****Semantic Notes:****Comments:**

**Notes:** Example: Message envelope number "1357924680", type "APERAK", UN/Edifact directory "D16A"

UNH+1357924680+APERAK:D:16A:UN'

**Data Element Summary**

<u>Data Element</u>	<u>Component Element</u>	<u>Name</u>	<u>Base Attributes</u>		<u>User Attributes</u>
0062		<b>MESSAGE REFERENCE NUMBER</b>	M	1 an..14	M
		Unique message reference assigned by the sender.			
S009		<b>MESSAGE IDENTIFIER</b>	M	1	M
		Identification of the type, version etc. of the message being interchanged.			
	0065	<b>Message type identifier</b>	M	an..6	M
		Code identifying a type of message and assigned by its controlling agency.			
		APERAK Application error and acknowledgement message			
	0052	<b>Message type version number</b>	M	an..3	M
		Version number of a message type.			
		D Draft version/UN/EDIFACT Directory			
	0054	<b>Message type release number</b>	M	an..3	M
		Release number within the current message type version number (0052).			
		16A Release 2016 - A			
	0051	<b>Controlling agency</b>	M	an..2	M
		Code identifying the agency controlling the specification, maintenance and publication of the message type.			
		UN UN/CEFACT			
	0057	<b>Association assigned code</b>	C	an..6	O
		Code, assigned by the association responsible for the design and maintenance of the message type concerned, which further identifies the message.			
		Usage complemented in local document if mentioned in that document.			

<b>0068</b>	<b>COMMON ACCESS REFERENCE</b>	<b>C</b>	<b>1</b>	<b>an..35</b>	<b>X</b>
<b>S010</b>	<b>STATUS OF THE TRANSFER</b>	<b>C</b>	<b>1</b>		<b>X</b>
	Statement that the message is one in a sequence of transfers relating to the same topic.				
<b>0070</b>	<b>Sequence message transfer number</b>	<b>M</b>		<b>n..2</b>	<b>X</b>
	Number assigned by the sender indicating that the message is an addition or change of a previously sent message relating to the same topic.				
<b>0073</b>	<b>First/last sequence message transfer indication</b>	<b>C</b>		<b>a1</b>	<b>X</b>
	Indication used for the first and last message in a sequence of the same type of message relating to the same topic.				

**Segment:** **BGM** Beginning of Message  
**Position:** 00020  
**Group:**  
**Level:** 0  
**Usage:** Mandatory  
**Max Use:** 1  
**Purpose:** A segment to indicate the type and function of the message and to transmit the identifying number.

**Dependency Notes:****Semantic Notes:****Comments:**

**Notes:** Usage complemented in local document if mentioned in that document.

Example: Response to a accepted discharge report. Message response AK75440947, original message.

BGM+119+AK75440947+9+AP'

**Data Element Summary**

<u>Data Element</u>	<u>Component Element</u>	<u>Name</u>	<u>Base Attributes</u>	<u>User Attributes</u>
C002		DOCUMENT/MESSAGE NAME	C 1	R
		Identification of a type of document/message by code or name. Code preferred.		
	1001	Document name code	C an..3	R
		Code specifying the document name.		
		Except for codes '962' and '963', the codes' usage follow ITGG recommendation JM4/502 described in ITIGG document reference JM4/ITIGG/129/v.13 of October 1997.		
		The codes applicable depend if SG1 (DOC) is used to provide the identification of the document/message that was validated. If this is the case, then only '962' and '963' are to be used in this element.		
		104		Transport equipment impending arrival advice
		109		Transport movement gate in report
		111		Transport movement gate out report
		117		Transport equipment shift report
		118		Transport discharge instruction
		119		Transport discharge report
		121		Transport loading instruction
		122		Transport loading report
		129		Transport cargo release order
		132		Customs clearance notice
		171		Pick-up notice
		265		Transport equipment movement report

	266	Transport equipment status change report			
	749	Transport equipment gross mass verification message			
	962	Document response (Customs)			
	963	Error response (Customs)			
	<b>1131</b>	<b>Code list identification code</b>	<b>C</b>	<b>an..17</b>	<b>X</b>
	<b>3055</b>	<b>Code list responsible agency code</b>	<b>C</b>	<b>an..3</b>	<b>X</b>
	<b>1000</b>	<b>Document name</b>	<b>C</b>	<b>an..35</b>	<b>X</b>
<b>C106</b>		<b>DOCUMENT/MESSAGE IDENTIFICATION</b>	<b>C</b>	<b>1</b>	<b>R</b>
		Identification of a document/message by its number and eventually its version or revision.			
	<b>1004</b>	<b>Document identifier</b>	<b>C</b>	<b>an..70</b>	<b>R</b>
		To identify a document.			
	<b>1056</b>	<b>Version identifier</b>	<b>C</b>	<b>an..9</b>	<b>X</b>
	<b>1060</b>	<b>Revision identifier</b>	<b>C</b>	<b>an..6</b>	<b>X</b>
<b>1225</b>		<b>MESSAGE FUNCTION CODE</b>	<b>C</b>	<b>1 an..3</b>	<b>R</b>
		Code indicating the function of the message.			
	9	Original			
<b>4343</b>		<b>RESPONSE TYPE CODE</b>	<b>C</b>	<b>1 an..3</b>	<b>R</b>
		Code specifying the type of acknowledgment required or transmitted.			
	AP	Accepted			
	CA	Conditionally accepted			
		Usage complemented in local document if mentioned in that document.			
	RE	Rejected			
<b>1373</b>		<b>DOCUMENT STATUS CODE</b>	<b>C</b>	<b>1 an..3</b>	<b>X</b>
<b>3453</b>		<b>LANGUAGE NAME CODE</b>	<b>C</b>	<b>1 an..3</b>	<b>X</b>



**Segment:** **DTM** Date/Time/Period  
**Position:** 00030  
**Group:**  
**Level:** 0  
**Usage:** Conditional (Required)  
**Max Use:** 1  
**Purpose:** A segment to specify related date/time.  
**Dependency Notes:**  
**Semantic Notes:**  
**Comments:**

**Notes:** The usage of this segment is to provide the date/time at which the sender creates the message. In this case DE:2005 will be '137'.

Example: Message issued on 2002/02/01 at 14:21

DTM+137:200202011421:203'

#### Data Element Summary

<u>Data Element</u>	<u>Component Element</u>	<u>Name</u>	<u>Base Attributes</u>		<u>User Attributes</u>
C507		<b>DATE/TIME/PERIOD</b>	<b>M</b>	<b>1</b>	<b>M</b>
		Date and/or time, or period relevant to the specified date/time/period type.			
	2005	<b>Date or time or period function code qualifier</b>	<b>M</b>	<b>an..3</b>	<b>M</b>
		Code qualifying the function of a date, time or period.			
		137 Document issue date time			
	2380	<b>Date or time or period text</b>	<b>C</b>	<b>an..35</b>	<b>R</b>
		The value of a date, a date and time, a time or of a period in a specified representation.			
	2379	<b>Date or time or period format code</b>	<b>C</b>	<b>an..3</b>	<b>R</b>
		Code specifying the representation of a date, time or period.			
		203 CCYYMMDDHHMM			

**Group:** **DOC** Segment Group 1: Document/Message Details  
**Position:** 00060  
**Group:**  
**Level:** 1  
**Usage:** Conditional (Optional)  
**Max Use:** 1  
**Purpose:** A segment group to provide information on the document being acknowledged.  
**Notes:** Usage complemented in local document if mentioned in that document.

ITIGG recommendation does not refer the usage of group 1 having segment DOC as trigger. The reason is that the EDIFACT directory on which the recommendation was made (D.96B) does not have this group associated to segment DOC. Instead the group 1 has associated to segment RFF.

In the EDIFACT directory D.16A, group 1 is associated to segment DOC, and a group (identified by 2) associated to segment RFF was kept. However, according to the EDIFACT definition, the "new" group 2 kept the same definition of the "old" group 1. Considering that in the definition it is mention "document/message", it can be concluded that some overlapping exists between the purposes of groups 1 and 2 under directory D.16B.

In this MIG the adopted approach will be the following. Group 2 will be used to identify the message being acknowledge by this reply, in a one-to-one situation. Group 1 will be used to identify the document underlying the message identified in group 2. This approach provides extra data for matching messages sent and received, and the respective buisness documents, allowing a dialog process more robust and a business process more consistent.

#### Segment Summary

	<b>Pos.</b>	<b>Seg.</b>		<b>Req.</b>	<b>Max.</b>	<b>Group:</b>
	<b><u>No.</u></b>	<b><u>ID</u></b>	<b><u>Name</u></b>	<b><u>Des.</u></b>	<b><u>Use</u></b>	<b><u>Repeat</u></b>
M	00070	DOC	Document/Message Details	M	1	
O	00080	DTM	Date/Time/Period	C	1	

**Segment:** **DOC** Document/Message Details  
**Position:** 00070 (Trigger Segment)  
**Group:** Segment Group 1 (Document/Message Details) Conditional (Optional)  
**Level:** 1  
**Usage:** Mandatory  
**Max Use:** 1  
**Purpose:** A segment to provide the necessary identification information about the document being acknowledged.

**Dependency Notes:****Semantic Notes:****Comments:**

**Notes:** Example: The document being acknowledge is a discharge report identified by "2018/02568"

DOC+118+2018/02568'

**Data Element Summary**

<u>Data Element</u>	<u>Component Element</u>	<u>Name</u>	<u>Base Attributes</u>		<u>User Attributes</u>
C002		<b>DOCUMENT/MESSAGE NAME</b>	M	1	M
		Identification of a type of document/message by code or name. Code preferred.			
	1001	<b>Document name code</b>	C	an..3	R
		Code specifying the document name.			
		This element identifies the type of document being acknowledge.			
		The qualifer must be the value present in BGM:C002:1001 in the message being acknowledge.			
		104 Transport equipment impending arrival advice			
		109 Transport movement gate in report			
		111 Transport movement gate out report			
		117 Transport equipment shift report			
		118 Transport discharge instruction			
		119 Transport discharge report			
		121 Transport loading instruction			
		122 Transport loading report			
		129 Transport cargo release order			
		132 Customs clearance notice			
		171 Pick-up notice			
		265 Transport equipment movement report			
		266 Transport equipment status change report			
		749 Transport equipment gross mass verification message			
		962 Document response (Customs)			
	1131	<b>Code list identification code</b>	C	an..17	X

	<b>3055</b>	<b>Code list responsible agency code</b>	<b>C</b>	<b>an..3</b>	<b>X</b>
	<b>1000</b>	<b>Document name</b>	<b>C</b>	<b>an..35</b>	<b>X</b>
<b>C503</b>		<b>DOCUMENT/MESSAGE DETAILS</b>	<b>C</b>	<b>1</b>	<b>R</b>
		Identification of document/message by number, status, source and/or language.			
	<b>1004</b>	<b>Document identifier</b>	<b>C</b>	<b>an..70</b>	<b>R</b>
		To identify a document.			
	<b>1373</b>	<b>Document status code</b>	<b>C</b>	<b>an..3</b>	<b>X</b>
	<b>1366</b>	<b>Document source description</b>	<b>C</b>	<b>an..70</b>	<b>X</b>
	<b>3453</b>	<b>Language name code</b>	<b>C</b>	<b>an..3</b>	<b>X</b>
	<b>1056</b>	<b>Version identifier</b>	<b>C</b>	<b>an..9</b>	<b>X</b>
	<b>1060</b>	<b>Revision identifier</b>	<b>C</b>	<b>an..6</b>	<b>X</b>
<b>3153</b>		<b>COMMUNICATION MEDIUM TYPE CODE</b>	<b>C</b>	<b>1 an..3</b>	<b>X</b>
<b>1220</b>		<b>DOCUMENT COPIES REQUIRED QUANTITY</b>	<b>C</b>	<b>1 n..2</b>	<b>X</b>
<b>1218</b>		<b>DOCUMENT ORIGINALS REQUIRED QUANTITY</b>	<b>C</b>	<b>1 n..2</b>	<b>X</b>

**Segment:** **DTM** Date/Time/Period  
**Position:** 00080  
**Group:** Segment Group 1 (Document/Message Details) Conditional (Optional)  
**Level:** 2  
**Usage:** Conditional (Optional)  
**Max Use:** 1  
**Purpose:** A segment to provide the relevant dates concerning the document being acknowledged.

**Dependency Notes:****Semantic Notes:****Comments:**

**Notes:** Usage complemented in local document if mentioned in that document.

The complete meaning of this date depends on the type of reference in the previous RFF segment, stated in DOC:C503:1004 data element.

Example: Date/time of the reference: "2003/10/08 - 10:15"

DTM+171:200310081015:203'

**Data Element Summary**

<u>Data Element</u>	<u>Component Element</u>	<u>Name</u>	<u>Base Attributes</u>		<u>User Attributes</u>
C507		DATE/TIME/PERIOD	M	1	M
		Date and/or time, or period relevant to the specified date/time/period type.			
	2005	<b>Date or time or period function code qualifier</b>	M	an..3	M
		Code qualifying the function of a date, time or period.			
		171 Reference date/time			
	2380	<b>Date or time or period text</b>	C	an..35	R
		The value of a date, a date and time, a time or of a period in a specified representation.			
	2379	<b>Date or time or period format code</b>	C	an..3	R
		Code specifying the representation of a date, time or period.			
		203 CCYYMMDDHHMM			

**Group:** **RFF** Segment Group 2: Reference  
**Position:** 00090  
**Group:**  
**Level:** 1  
**Usage:** Conditional (Required)  
**Max Use:** 1  
**Purpose:** A group of segments to specify the document/message to which the current message relates, and related date and time.  
**Notes:** See notes in group 1.

This group allows the identification of the message being acknowledge.

Although not considered in ITIGG recommendation, the usage of SG2:DTM provides extra data for the matching between messages.

#### Segment Summary

	<b>Pos.</b>	<b>Seg.</b>		<b>Req.</b>	<b>Max.</b>	<b>Group:</b>
	<b><u>No.</u></b>	<b><u>ID</u></b>	<b><u>Name</u></b>	<b><u>Des.</u></b>	<b><u>Use</u></b>	<b><u>Repeat</u></b>
M	00100	RFF	Reference	M	1	
O	00110	DTM	Date/Time/Period	C	1	

**Segment:** **RFF** Reference  
**Position:** 00100 (Trigger Segment)  
**Group:** Segment Group 2 (Reference) Conditional (Required)  
**Level:** 1  
**Usage:** Mandatory  
**Max Use:** 1  
**Purpose:** A segment to indicate the reference number of the document/message.  
**Dependency Notes:**  
**Semantic Notes:**  
**Comments:**  
**Notes:** Example: Message being acknowledge is GI50938803  
RFF+ACW:GI50938803'

#### Data Element Summary

<u>Data Element</u>	<u>Component Element</u>	<u>Name</u>	<u>Base Attributes</u>		<u>User Attributes</u>
C506		REFERENCE	M	1	M
		Identification of a reference.			
	1153	Reference code qualifier	M	an..3	M
		Code qualifying a reference.			
		ACW Reference number to previous message			
	1154	Reference identifier	C	an..70	R
		Identifies a reference.			
		Usage complemented in local document if mentioned in that document.			
	1156	Document line identifier	C	an..6	X
	1056	Version identifier	C	an..9	X
	1060	Revision identifier	C	an..6	X

**Segment:** **DTM** Date/Time/Period  
**Position:** 00110  
**Group:** Segment Group 2 (Reference) Conditional (Required)  
**Level:** 2  
**Usage:** Conditional (Optional)  
**Max Use:** 1  
**Purpose:** A segment to specify the date and time of the referenced document/message.

**Dependency Notes:****Semantic Notes:****Comments:**

**Notes:** Usage complemented in local document if mentioned in that document.

The complete meaning of this date depends of the type of reference in the previous RFF segment, stated in RFF:C506:1153 data element.

Example: Date/time of the reference: "2003/10/08 - 10:15"

DTM+171:200310081015:203'

**Data Element Summary**

<u>Data Element</u>	<u>Component Element</u>	<u>Name</u>	<u>Base Attributes</u>		<u>User Attributes</u>
C507		DATE/TIME/PERIOD	M	1	M
		Date and/or time, or period relevant to the specified date/time/period type.			
	2005	<b>Date or time or period function code qualifier</b>	M	an..3	M
		Code qualifying the function of a date, time or period.			
		171 Reference date/time			
	2380	<b>Date or time or period text</b>	C	an..35	R
		The value of a date, a date and time, a time or of a period in a specified representation.			
	2379	<b>Date or time or period format code</b>	C	an..3	R
		Code specifying the representation of a date, time or period.			
		203 CCYYMMDDHHMM			



**Group:** **NAD** Segment Group 3: Name and Address

**Position:** 00120

**Group:**

**Level:** 1

**Usage:** Conditional (Required)

**Max Use:** 9

**Purpose:** A group of segments to specify the identifications of message sender and message receiver with their contacts and communication channels.

**Notes:** This group allows the identification of the several parties mentioned at header level in the message being acknowledge. Not all types of parties exist in a single message.

At least the message receiver and the message sender must be present. However with exchanged roles. So in this message the sender is the receiver of the message being acknowledge, and the receiver in this message is the sender of the message being acknowledge.

#### Segment Summary

	<b>Pos.</b>	<b>Seg.</b>		<b>Req.</b>	<b>Max.</b>	<b>Group:</b>
	<b><u>No.</u></b>	<b><u>ID</u></b>	<b><u>Name</u></b>	<b><u>Des.</u></b>	<b><u>Use</u></b>	<b><u>Repeat</u></b>
M	00130	NAD	Name and Address	M	1	
O	00140	CTA	Contact Information	C	1	
O	00150	COM	Communication Contact	C	4	

**Segment:** **NAD** Name and Address  
**Position:** 00130 (Trigger Segment)  
**Group:** Segment Group 3 (Name and Address) Conditional (Required)  
**Level:** 1  
**Usage:** Mandatory  
**Max Use:** 1  
**Purpose:** A segment to specify the identification of the message issuer and message receiver.  
**Dependency Notes:**  
**Semantic Notes:**  
**Comments:**  
**Notes:** Usage complemented in local document if mentioned in that document.

The entities are to be identified by their EORI. In Portugal the EORI id is composed by PT+[VAT number].

Example: Terminal operator identified by PT541495122.

NAD+TR+PT541495122'

Example: Message sender identified by PT501449752.

NAD+MS+PT501449752'

#### Data Element Summary

Data Element	Component Element	Name	Base			User
			Attributes			Attributes
3035		<b>PARTY FUNCTION CODE QUALIFIER</b>	<b>M</b>	<b>1</b>	<b>an..3</b>	<b>M</b>
		Code giving specific meaning to a party.				
		AG				Agent
		CA				Carrier
		CF				Container operator/lessee
		CG				Carrier's agent
		CM				Customs
		CN				Consignee
		CZ				Consignor
		DEI				Means of transport operator
		EX				Exporter
		FW				Freight forwarder
		GA				Road carrier
		GF				Slot charter party
		GT				Rail carrier
		HA				Party which delivers consignments to the terminal
		HB				Party which picks up consignments from the terminal
		HR				Shipping line service

	IM	Importer			
	MR	Message recipient			
		An entity with this qualifer is required.			
	MS	Document/message issuer/sender			
		An entity with this qualifer is required.			
	SPC	SOLAS verified gross mass responsible party			
	TB	Submitter			
	TR	Terminal operator			
	WD	Warehouse depositor			
	WPA	Weighting party			
<b>C082</b>		<b>PARTY IDENTIFICATION DETAILS</b>	<b>C</b>	<b>1</b>	<b>R</b>
		Identification of a transaction party by code.			
	<b>3039</b>	<b>Party identifier</b>	<b>M</b>	<b>an..35</b>	<b>M</b>
		Code specifying the identity of a party.			
		Number corresponding to EORI of the entity, or another code mutually agreed between the parties.			
	<b>1131</b>	<b>Code list identification code</b>	<b>C</b>	<b>an..17</b>	<b>O</b>
		Code identifying a user or association maintained code list.			
		Usage complemented in local document if mentioned in that document.			
	160	Party identification			
	172	Carriers			
	<b>3055</b>	<b>Code list responsible agency code</b>	<b>C</b>	<b>an..3</b>	<b>X</b>
<b>C058</b>		<b>NAME AND ADDRESS</b>	<b>C</b>	<b>1</b>	<b>X</b>
		Unstructured name and address: one to five lines.			
	<b>3124</b>	<b>Name and address description</b>	<b>M</b>	<b>an..35</b>	<b>X</b>
		Free form description of a name and address line.			
	<b>3124</b>	<b>Name and address description</b>	<b>C</b>	<b>an..35</b>	<b>X</b>
		Free form description of a name and address line.			
	<b>3124</b>	<b>Name and address description</b>	<b>C</b>	<b>an..35</b>	<b>X</b>
		Free form description of a name and address line.			
	<b>3124</b>	<b>Name and address description</b>	<b>C</b>	<b>an..35</b>	<b>X</b>
		Free form description of a name and address line.			
	<b>3124</b>	<b>Name and address description</b>	<b>C</b>	<b>an..35</b>	<b>X</b>
		Free form description of a name and address line.			
<b>C080</b>		<b>PARTY NAME</b>	<b>C</b>	<b>1</b>	<b>X</b>
		Identification of a transaction party by name, one to five lines. Party name may be formatted.			
	<b>3036</b>	<b>Party name</b>	<b>M</b>	<b>an..70</b>	<b>X</b>
		Name of a party.			
	<b>3036</b>	<b>Party name</b>	<b>C</b>	<b>an..70</b>	<b>X</b>
		Name of a party.			

	<b>3036</b>	<b>Party name</b>	<b>C</b>	<b>an..70</b>	<b>X</b>
		Name of a party.			
	<b>3036</b>	<b>Party name</b>	<b>C</b>	<b>an..70</b>	<b>X</b>
		Name of a party.			
	<b>3036</b>	<b>Party name</b>	<b>C</b>	<b>an..70</b>	<b>X</b>
		Name of a party.			
	<b>3045</b>	<b>Party name format code</b>	<b>C</b>	<b>an..3</b>	<b>X</b>
		Code specifying the representation of a party name.			
<b>C059</b>		<b>STREET</b>	<b>C</b>	<b>1</b>	<b>X</b>
		Street address and/or PO Box number in a structured address: one to four lines.			
	<b>3042</b>	<b>Street and number or post office box identifier</b>	<b>M</b>	<b>an..35</b>	<b>X</b>
		To identify a street and number and/or Post Office box number.			
	<b>3042</b>	<b>Street and number or post office box identifier</b>	<b>C</b>	<b>an..35</b>	<b>X</b>
		To identify a street and number and/or Post Office box number.			
	<b>3042</b>	<b>Street and number or post office box identifier</b>	<b>C</b>	<b>an..35</b>	<b>X</b>
		To identify a street and number and/or Post Office box number.			
	<b>3042</b>	<b>Street and number or post office box identifier</b>	<b>C</b>	<b>an..35</b>	<b>X</b>
		To identify a street and number and/or Post Office box number.			
<b>3164</b>		<b>CITY NAME</b>	<b>C</b>	<b>1 an..35</b>	<b>X</b>
<b>C819</b>		<b>COUNTRY SUBDIVISION DETAILS</b>	<b>C</b>	<b>1</b>	<b>X</b>
		To specify a country subdivision, such as state, canton, county, prefecture.			
	<b>3229</b>	<b>Country subdivision identifier</b>	<b>C</b>	<b>an..9</b>	<b>X</b>
		To identify a country subdivision, such as state, canton, county, prefecture.			
	<b>1131</b>	<b>Code list identification code</b>	<b>C</b>	<b>an..17</b>	<b>X</b>
		Code identifying a user or association maintained code list.			
	<b>3055</b>	<b>Code list responsible agency code</b>	<b>C</b>	<b>an..3</b>	<b>X</b>
		Code specifying the agency responsible for a code list.			
	<b>3228</b>	<b>Country subdivision name</b>	<b>C</b>	<b>an..70</b>	<b>X</b>
		Name of a country subdivision, such as state, canton, county, prefecture.			
<b>3251</b>		<b>POSTAL IDENTIFICATION CODE</b>	<b>C</b>	<b>1 an..17</b>	<b>X</b>
<b>3207</b>		<b>COUNTRY IDENTIFIER</b>	<b>C</b>	<b>1 an..3</b>	<b>X</b>

**Segment:** **CTA Contact Information**  
**Position:** 00140  
**Group:** Segment Group 3 (Name and Address) Conditional (Required)  
**Level:** 2  
**Usage:** Conditional (Optional)  
**Max Use:** 1  
**Purpose:** A segment to specify a person or department inside the party's organization, to which communication should be directed.

**Dependency Notes:****Semantic Notes:****Comments:**

**Notes:** Usage complemented in local document if mentioned in that document.

Example: Contact Mr. Rui Silva.

CTA+IC+:RUI SILVA'

**Data Element Summary**

<b>Data Element</b>	<b>Component Element</b>	<b>Name</b>	<b>Base Attributes</b>	<b>User Attributes</b>
<b>3139</b>		<b>CONTACT FUNCTION CODE</b>	<b>C 1 an..3</b>	<b>R</b>
		Code specifying the function of a contact (e.g. department or person). IC Information contact		
<b>C056</b>		<b>CONTACT DETAILS</b>	<b>C 1</b>	<b>R</b>
		Code and/or name of a contact such as a department or employee. Code preferred.		
	<b>3413</b>	<b>Contact identifier</b>	<b>C an..17</b>	<b>X</b>
	<b>3412</b>	<b>Contact name</b>	<b>C an..256</b>	<b>R</b>
		Name of a contact, such as a department or employee.		

**Segment:** **COM** **Communication Contact**  
**Position:** 00150  
**Group:** Segment Group 3 (Name and Address) Conditional (Required)  
**Level:** 2  
**Usage:** Conditional (Optional)  
**Max Use:** 4  
**Purpose:** A segment to indicate communication channel type and number inside the party's organization, to which communication should be directed.

**Dependency Notes:****Semantic Notes:****Comments:**

**Notes:** Usage complemented in local document if mentioned in that document.

Example: Contact by phone number 229390700.

COM+229390700:TE'

Example: Contact by email jose.silva@mybusiness.com

COM+JOSE.SILVA(A)MYBUSINESS.COM:EM'

**Data Element Summary**

<b>Data Element</b>	<b>Component Element</b>	<b>Name</b>	<b>Base Attributes</b>		<b>User Attributes</b>
<b>C076</b>		<b>COMMUNICATION CONTACT</b>	<b>M</b>	<b>1</b>	<b>M</b>
		Communication number of a department or employee in a specified channel.			
	<b>3148</b>	<b>Communication address identifier</b>	<b>M</b>	<b>an..512</b>	<b>M</b>
		To identify a communication address.			
	<b>3155</b>	<b>Communication means type code</b>	<b>M</b>	<b>an..3</b>	<b>M</b>
		Code specifying the type of communication address.			
		AL Cellular phone			
		EM Electronic mail			
		FX Telefax			
		TE Telephone			

**Group:** **ERC** Segment Group 4: Application Error Information  
**Position:** 00160  
**Group:**  
**Level:** 1  
**Usage:** Conditional (Required)  
**Max Use:** 99999  
**Purpose:** A group of segments to identify the application error(s) within a specified received message and to give specific details related to the error type or to precise the type of acknowledgement.  
**Notes:** Usage complemented in local document if mentioned in that document.

Group's usage follows the recommendation JM4/513 of ITIGG in document JM4/ITIGG/129/v.13 of October 1997.

This group is to provide feedback on the result of the validation and integration of the previously received message. The possible classes of reported situations are: no error, warning, and error.

Except otherwise stated, the operation of this group follows the principle of providing the most possible feedback, avoiding reporting errors related with previously reported errors during the same interaction.

In practical terms this is illustrated in the following example.

Let us assume that this message is reporting the validation of discharge list reporting 10 containers, and all containers pass the validation except the 4th. In this situation 11 occurrences of SG4 (ERC) will occur. The first is to report that the received message header is correct. The following occurrences will report 9 correct situations and 1 incorrect situation. Depending on the message received, data will be used to facilitate the matching between the reported correct/incorrect situation, and received message.

Now, let us assume that there are two validations related with UN/Locode for the port of loading. One is to check if the locode is present in the message. The other to check if the locode exists in the database (i.e. it is valid). In the example above, the problem with the 4th container is that the segment with the qualifier for the port of loading is present, but the element is empty. So, the validation for the value missing will be triggered. But it is useless to verify if the locode is valid. So the validation process will stop for this container and proceeds to the next.

#### Segment Summary

	<b>Pos.</b>	<b>Seg.</b>		<b>Req.</b>	<b>Max.</b>	<b>Group:</b>
	<b>No.</b>	<b>ID</b>	<b>Name</b>	<b>Des.</b>	<b>Use</b>	<b>Repeat</b>
M	00170	ERC	Application Error Information	M	1	
O	00180	FTX	Free Text	C	1	
	00190		Segment Group 5: Reference	C		2

**Segment:** **ERC** **Application Error Information**  
**Position:** 00170 (Trigger Segment)  
**Group:** Segment Group 4 (Application Error Information) Conditional (Required)  
**Level:** 1  
**Usage:** Mandatory  
**Max Use:** 1  
**Purpose:** A segment identifying the type of application error or acknowledgement within the referenced message. In case of an error, the error code may specify the error in detail (e.g. a measurement relating to a piece of equipment is wrong) or as a rough indication (e.g. a measurement is wrong).

**Dependency Notes:****Semantic Notes:****Comments:**

**Notes:** Example: error code being reported: EQP01012.

ERC+EQP01012'

**Data Element Summary**

<u>Data Element</u>	<u>Component Element</u>	<u>Name</u>	<u>Base Attributes</u>		<u>User Attributes</u>
C901		<b>APPLICATION ERROR DETAIL</b>	M	1	M
		Code assigned by the recipient of a message to indicate a data validation error condition.			
	9321	<b>Application error code</b>	M	an..8	M
		Code specifying an application error.			
		Usage complemented in local document if mentioned in that document.			
		Warning/Error/Success code being reported.			
	1131	<b>Code list identification code</b>	C	an..17	X
	3055	<b>Code list responsible agency code</b>	C	an..3	X



**Segment:** **FTX** Free Text  
**Position:** 00180  
**Group:** Segment Group 4 (Application Error Information) Conditional (Required)  
**Level:** 2  
**Usage:** Conditional (Optional)  
**Max Use:** 1  
**Purpose:** A segment to provide explanation and/or supplementary information related to the specified application error or acknowledgement. For example, the explanation may provide exact details relating to a generic error code.

**Dependency Notes:****Semantic Notes:****Comments:**

**Notes:** Usage complemented in local document if mentioned in that document.

Example: Description of code error reporting port location code unknown.

FTX+AAO+++LOCODE UNKNOWN'

**Data Element Summary**

<u>Data Element</u>	<u>Component Element</u>	<u>Name</u>	<u>Base Attributes</u>			<u>User Attributes</u>
4451		<b>TEXT SUBJECT CODE QUALIFIER</b> Code qualifying the subject of the text. AAO Error description (free text)	M	1	an..3	M
4453		<b>FREE TEXT FUNCTION CODE</b>	C	1	an..3	X
C107		<b>TEXT REFERENCE</b> Coded reference to a standard text and its source.	C	1		X
	4441	<b>Free text description code</b> Code specifying free form text.	M		an..17	X
	1131	<b>Code list identification code</b> Code identifying a user or association maintained code list.	C		an..17	X
	3055	<b>Code list responsible agency code</b> Code specifying the agency responsible for a code list.	C		an..3	X
C108		<b>TEXT LITERAL</b> Free text; one to five lines. Usage complemented in local document if mentioned in that document.	C	1		R
	4440	<b>Free text</b> Free form text.	M		an..512	M
	4440	<b>Free text</b> Free form text.	C		an..512	O
	4440	<b>Free text</b> Free form text.	C		an..512	O

<b>4440</b>	<b>Free text</b>	<b>C</b>	<b>an..512</b>	<b>O</b>
	Free form text.			
<b>4440</b>	<b>Free text</b>	<b>C</b>	<b>an..512</b>	<b>O</b>
	Free form text.			
<b>3453</b>	<b>LANGUAGE NAME CODE</b>	<b>C</b>	<b>1 an..3</b>	<b>X</b>
<b>4447</b>	<b>FREE TEXT FORMAT CODE</b>	<b>C</b>	<b>1 an..3</b>	<b>X</b>

**Group:** **RFF** Segment Group 5: Reference  
**Position:** 00190  
**Group:** Segment Group 4 (Application Error Information) Conditional (Required)  
**Level:** 2  
**Usage:** Conditional (Optional)  
**Max Use:** 2  
**Purpose:** A group of segments to specify the functional entity reference (e.g. goods item level, equipment level) relating to the specified error; further details can be added to identify the error more precisely.  
**Notes:** Usage complemented in local document if mentioned in that document.

In practise this segment group will point to key references in the received message, in order to allow an easier location of the problem.

A key reference is understood as an identification of an item that somehow encapsulates several items of information of a message.

Example one, a container's prefix and number is a key reference to all the EQD's group segment, whatever the message is.

Example two, the error is related with a general cargo shipment. In the JUL context, such item is identified by the transport document (usually a BL) and a shipment number. In this case, two occurrences of this group must exist, except if only the transport document id is known, where only one occurrence is possible.

Example three, similar to example two, but only part of a shipment was reported. This situations may happen when reporting the port exit of a general cargo shipment that needs more than one truck to be moved. In this case, complementary to the elements mentioned in example two, the message being replied identifies by itself this part of the shipment.

#### Segment Summary

	<b>Pos.</b>	<b>Seg.</b>		<b>Req.</b>	<b>Max.</b>	<b>Group:</b>
	<b><u>No.</u></b>	<b><u>ID</u></b>	<b><u>Name</u></b>	<b><u>Des.</u></b>	<b><u>Use</u></b>	<b><u>Repeat</u></b>
M	00200	RFF	Reference	M	1	

**Segment:** **RFF** Reference  
**Position:** 00200 (Trigger Segment)  
**Group:** Segment Group 5 (Reference) Conditional (Optional)  
**Level:** 2  
**Usage:** Mandatory  
**Max Use:** 1  
**Purpose:** A segment to provide a reference relating to the acknowledgement type or the specified error (e.g. functional entity reference such as equipment level).

**Dependency Notes:****Semantic Notes:****Comments:**

**Notes:** Example: message item related with the error code is container AWSU 123456 7.

RFF+AAQ:ASWU1234567'

Example: message item related with the error code is general cargo shipment 0023 of Bill of Lading XPTO9876.

RFF+BM+XPTO9876'

RRF+UCN-+0023'

**Data Element Summary**

<u>Data Element</u>	<u>Component Element</u>	<u>Name</u>	<u>Base Attributes</u>		<u>User Attributes</u>
C506		<b>REFERENCE</b> Identification of a reference.	M	1	M
	1153	<b>Reference code qualifier</b> Code qualifying a reference.	M	an..3	M
	AAQ	Transport equipment identifier Use this qualifer when the error is related with transport equipment (e.g. container).			
	APG	General purpose message reference number Use this qualifier when the error is related with the header of the message or affects the whole message.			
	AVL	Consignment information Use this qualifer when the error is related with consignments.			
	AVM	Goods item information Use this qualifer when the error is related with a goods mentioned in consignments.			
	AVP	Person registration number Use this qualifier when the error is related with a person.			
	BM	Bill of lading number Use this qualifer when the error is related with a general cargo shipment.			
	UCN	Unique consignment reference number			

Use this qualifier when the error is related with a general cargo shipment and a unique reference number was reported.

<b>1154</b>	<b>Reference identifier</b>	<b>C</b>	<b>an..70</b>	<b>R</b>
	Identifies a reference.			
	Usage complemented in local document if mentioned in that document.			
	Key reference to the item or set of data being acknowledge.			
<b>1156</b>	<b>Document line identifier</b>	<b>C</b>	<b>an..6</b>	<b>X</b>
<b>1056</b>	<b>Version identifier</b>	<b>C</b>	<b>an..9</b>	<b>X</b>
<b>1060</b>	<b>Revision identifier</b>	<b>C</b>	<b>an..6</b>	<b>X</b>

**Segment:** **UNT** Message Trailer  
**Position:** 00220  
**Group:**  
**Level:** 0  
**Usage:** Mandatory  
**Max Use:** 1  
**Purpose:** A service segment ending a message, giving the total number of segments in the message (including the UNH & UNT) and the control reference number of the message.

**Dependency Notes:****Semantic Notes:****Comments:****Notes:** Example: 26 sent segments, message envelope reference "1357924680"

UNT+26+1357924680'

**Data Element Summary**

<u>Data Element</u>	<u>Component Element</u>	<u>Name</u>	<u>Base Attributes</u>			<u>User Attributes</u>
0074		NUMBER OF SEGMENTS IN A MESSAGE	M	1	n..6	M
		Control count of number of segments in a message.				
0062		MESSAGE REFERENCE NUMBER	M	1	an..14	M
		Unique message reference assigned by the sender.				